



What's the biggest moth in the world ?

! 40mm x 15mm

Why is this little butterfly so special?

This little copper butterfly is named after Te Rauparaha, a Ngati Toa warrior and chief because it is usually found along the coast from Taranaki to Wellington where Te Rauparaha was most active. But the southern most populations are found in South Canterbury at Te Moana and Kakahu.

Come to the museum on
Thursday 28th October
at 3.30pm
and explore the differences
between moths and butterflies
from our collection with
Museum Director, Philip Howe.

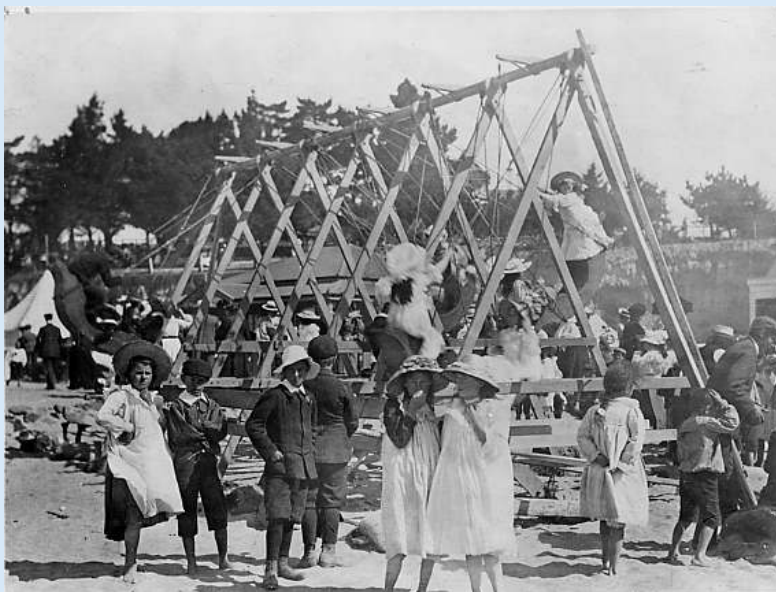
What do
insects
learn at
school ?
Mothmatics!

**This amazing dress made from
V drink bottles was the winner
of the Geraldine High School
Wearable Arts competition.
It is on display with other
student work at the museum
NOW!!!**

**WHY COULDN'T
THE BUTTERFLY
GO TO THE
DANCE?
BECAUSE IT WAS
A MOTH BALL!**



Caroline Bay Carnival celebrates 100 years



Our next exhibition opening on 18 November looks at how we have enjoyed the carnival over the last 100 years!!

Explorers session on Tuesday 23rd November will be walking around Caroline Bay Meet at 3.30pm at the aviary. If wet meet us at the museum.



While we humans have most of our taste receptors on our tongue, butterflies have theirs in their feet, allowing them to taste food by standing on it!

Today's cool website science humour for kids <http://www.sciencekids.co.nz/humor.html>



Christmas Parade 2010 on Saturday 4th December

Kiwi Christmas at the bay! New or old fashioned! What do YOU wear to the carnival or to the beach?

