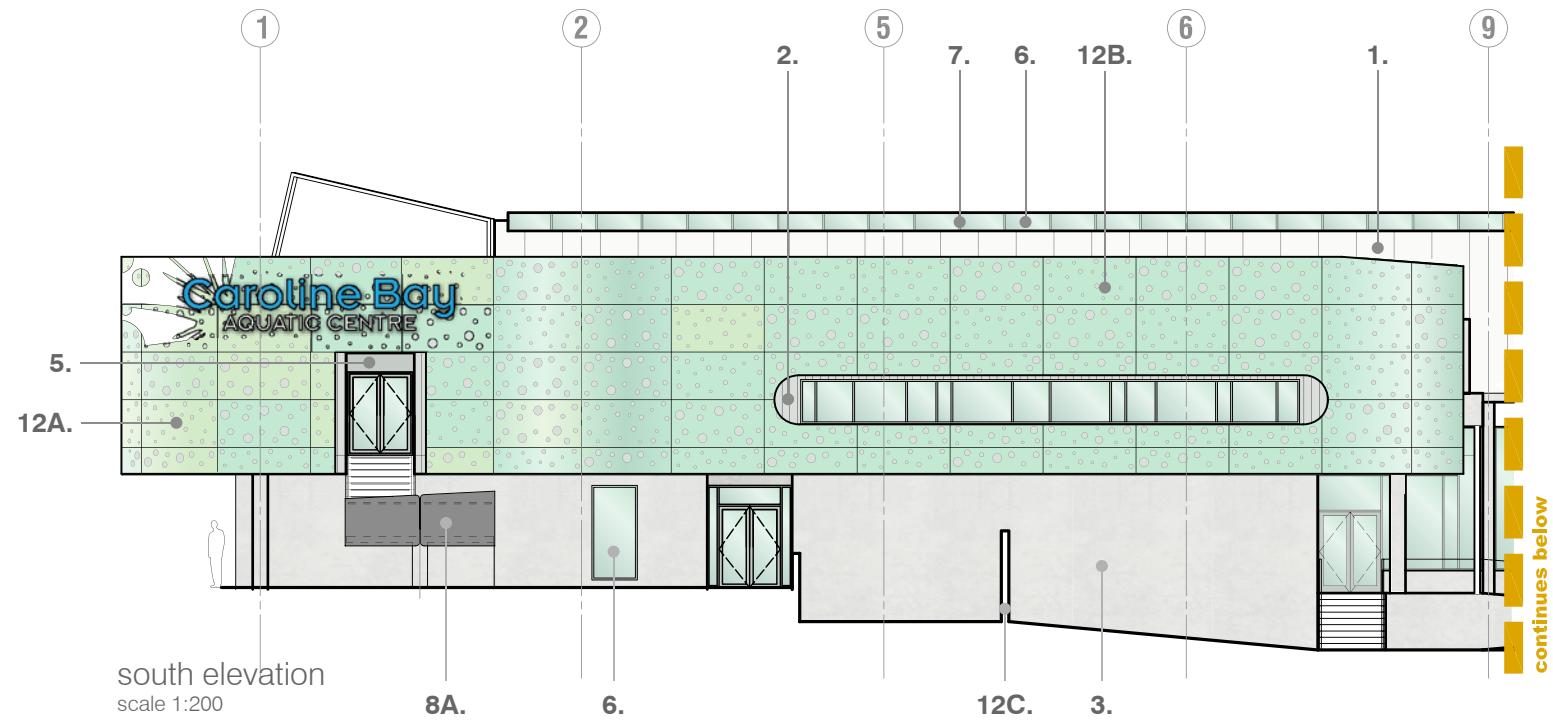
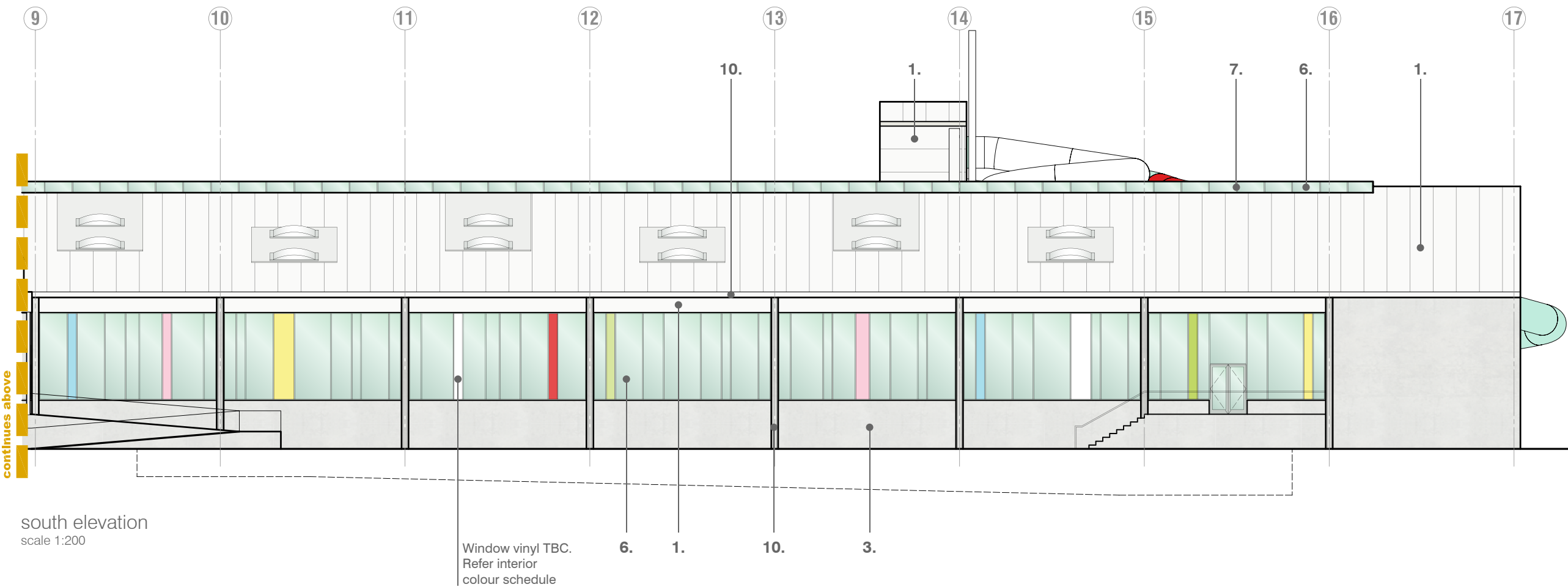


materials finishes & colours



south elevation
scale 1:200



south elevation
scale 1:200

Window vinyl TBC.
Refer interior
colour schedule

1. **Kingspan Roof/Wall Panels**
Colourcoated steel
Off white
2. **Longrun Metal Cladding**
Colour coated steel
Dimond Habitats PCC Off White
3. **Precast Concrete Panels 1**
Smooth concrete, clear sealed
Natural, clear
4. **Precast Concrete Panels 2**
Abrasive blasted, clear sealed
Natural, clear
5. **Titan Cladding & Titan Soffits**
Paint finish
Resene DRH51
(to match Dimond Habitats PCC Off White)
6. **Glazing**
Green tint
7. **Aluminium Joinery [door/windows/roof glazing/sky domes]**
Powder coated aluminium
Duraloy Silver Pearl
- 8A. **Louvres above Roller Door & Balustrades**
Powder coated aluminium
Duraloy Mid Grey
- 8B. **Roller Door**
Colourcoated steel
Grey Flannel
9. **Grilles & Louvres**
Powder coated aluminium
Duraloy Silver Pearl
10. **Gutters, Downpipes & Rainwater Heads**
Powder coated aluminium
Interpon Surfmist Matt
11. **Timber battens**
Stained
Resene Woodsman Nutmeg
12. **Rainscreen Cladding & Fence**
Tuffboard (Refer A5-81 for layout out)
12A - MLLGR-28470
12B - MLLGR-28695
12C - Black
13. **Rainscreen Steelwork**
Paint finish
Resene DRH51
(to match Dimond Habitats PCC Off White)
14. **Entry Tunnel Laminated Timber**
Stain finish
Resene Woodsman Nutmeg
15. **Entry Tunnel Aluminium**
Powder coated
Ameron Super Hot Chili
16. **Courtyard Canopy**
Painted steelwork
Ameron Super Hot Chili
17. **External Duct**
Painted steel
Resene DRH51
(to match Dimond Habitats PCC Off White)
18. **Hydrolides & Window Surrounds**
Fibreglass
18A - Sky Blue
18B - Signal Red
18C - Glacier
18D - Mist Grey
19. **Hydrolide Support Towers**
Painted steel
Resene DRH51
(to match Dimond Habitats PCC Off White)
20. **Aluminium Strips on Timber Battens**
Powder coated aluminium
20A - Orica Powder Coatings Mamba Green
20B - Orica Powder Coatings Sky
20C - Orica Powder Coatings Tickle Pink
20D - Orica Powder Coatings Happy
20E - Orica Powder Coatings Pearl White
21. **Green Wall Steelwork**
Paint finish
Resene Qtr Spanish White Y93-015-083

CAROLINE BAY AQUATIC CENTRE

FOR TIMARU DISTRICT COUNCIL

EXTERIOR COLOUR SCHEME

JANUARY | 2011

BOON GOLDSMITH BHASKAR BREBNER

team architects

Boon Goldsmith Bhaskar Brebner Team Architects Ltd
131 Courtenay Street New Plymouth 4310 New Zealand
t. +64 6 757 3200 f. +64 6 758 1344
office@bgb-ta.co.nz www.teamarchitects.co.nz

Proud to be sponsors of



job no. 5302 | a3 scale 1:200 | drawing title F3-02 | South Elevation | issue date 28 | 02 | 11

ALL CONTRACTORS MUST VERIFY ALL DIMENSIONS ON THE JOB BEFORE COMMENCING ANY WORK. DO NOT SCALE. © COPYRIGHT ON THESE DRAWINGS IS RESERVED.