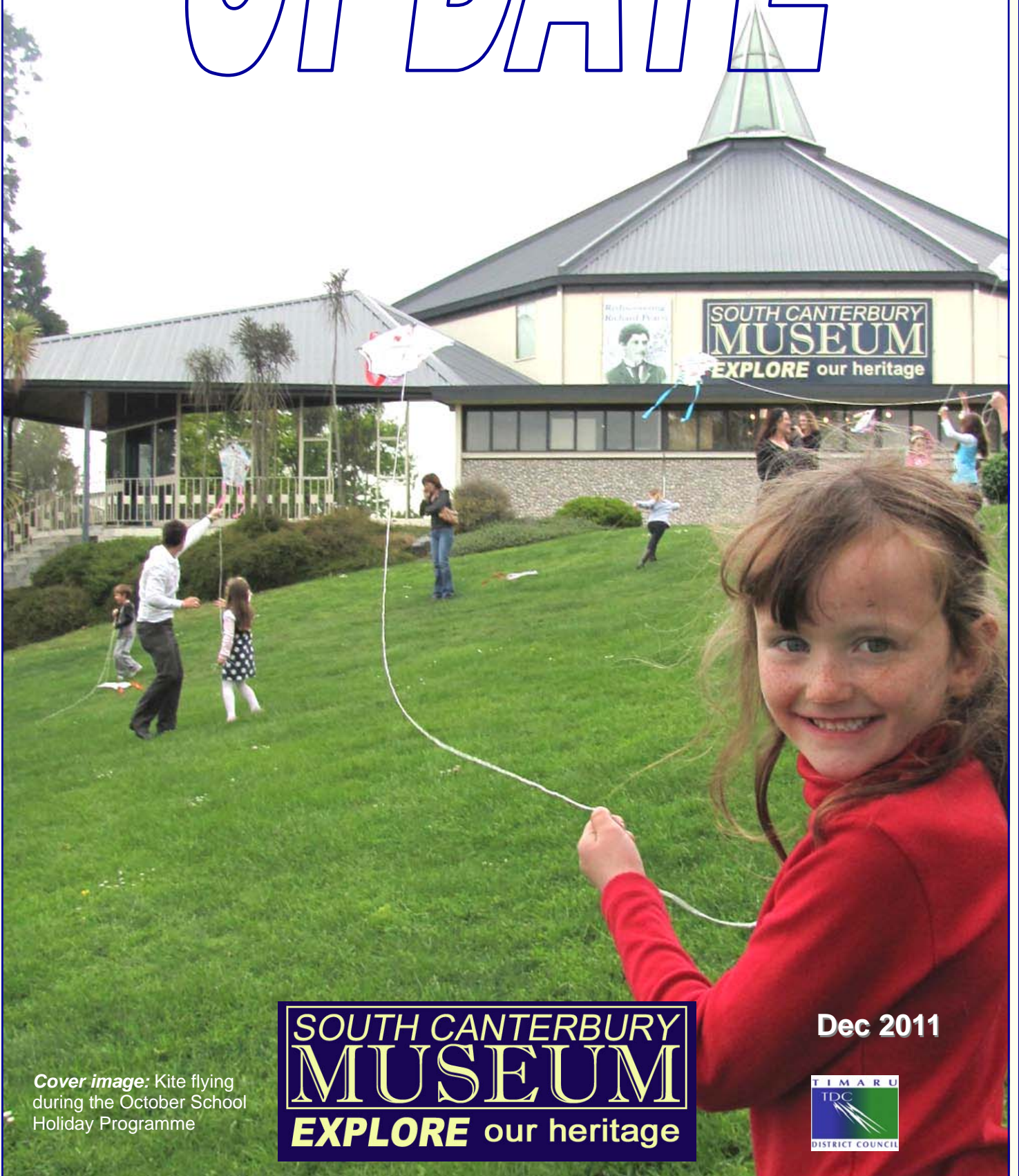


UPDATE



Cover image: Kite flying during the October School Holiday Programme

**SOUTH CANTERBURY
MUSEUM**
EXPLORE our heritage

Dec 2011



Director's comment: As 2011 comes to an end.....

As the year comes screaming towards an end, it is interesting to look back at how things went, and to think ahead. 2011 seems to have been another successful year here at the South Canterbury Museum, with all sorts of activities taking place, a programme of continuous improvement in our collection management, and a wider variety of people using our services.

The Museum has continued to grow and change, both in what it does and who is doing it. There have been new staff and volunteers joining our team, and we've tackled new projects. For me the best moments are when I see visitors, especially younger



ones, getting switched on by what they see or experience when they're exploring heritage with us at the Museum or elsewhere.

But as you'll read below, another major step forward for us has been the production and sale of ***The Streets of Timaru***. As I write, we have less than a third of the print run of 1,500 books left after only four weeks of sales. The book is a success commercially and is meeting popular acclaim.

What our visitors are saying....

One of the nicest and well-planned museums I've ever visited. Especially liked the geological (fossils) and zoological specimens, being a natural scientist myself! Lovely experience!

Canadian visitor, Oct 2011.

Timaru's latest history book launches at Museum

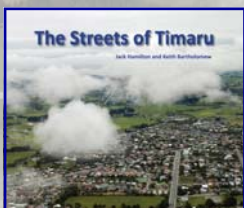
The Streets of Timaru

Jack Hamilton and Keith Bartholomew



Around 80 people attended the launch of our new book, ***The Streets of Timaru***. On Friday 11 November Speakers included the book's co-author, Keith Bartholomew (left), who updated Jack Hamilton's 1975 text; South Canterbury Historical Society President Ray Bennett; and the Museum's Tony Rippin who designed the layout, added graphics, images and additional information, and oversaw the

editing and production processes. The book was officially launched by Timaru District Councillor Damon Odey (above right). The book's production highlighted the ongoing effectiveness of the partnership between the Historical Society and the Museum, to the benefit of our community.



The book received acclaim from those at the launch and in a review in the following day's *Timaru Herald*. A number of Friends of the Museum had taken up the opportunity to pre-order copies at a reduced price, while others snapped up copies at the launch. The book is available from the Museum and from several local

book sellers, and we anticipate a shortage of stock developing in the very near future. As was said at the launch, every home in Timaru should have one! Come on in and get a copy, or download an order form from our website. By early December over 1,000 copies had gone out, so be in quick.



Student Ex! 2011 celebrating student achievement

Just finished



A glitter-covered AK47, a steampunk riding costume (left), 2011 Science Fair winning entries, the Maadi Rowing Cup, a carved Maori legend (right) and a Stage Challenge on the big screen - all part of this year's **Student Ex!** Co-ordinated by Keely and Wendy of our Heritage Education Service, this annual exhibition exposes some wonderful creativity, discovery and achievement to a wider audience. The exhibition ran through November, and is bound to be repeated next year.



What our visitors are saying....

I really liked the students' displays and am very glad the Museum took the effort to display their work! Keep it up, Timaru!

North Island visitor , Nov 2011.

Growing Timaru: exploring our urban growth

Now Showing



Hard on the heels of the launch of **The Streets of Timaru** comes our new exhibition **Growing Timaru**. Curator of Documentary History Tony Ripplin has drawn upon the Museum's rich collections, using maps, projected images and wonderful large aerial photographs from the 1940s and 50s to portray how Timaru has taken shape over the last 150 years. This fascinating exhibition will be on until 19 February 2012. Come in and see if you can spot your Gran's house.....



Life on the Edge: The seashore environment

Coming Up



We're marking Seaweek 2012 in March with a photographic exhibition that takes a closer look at our shoreline. Our beaches may seem barren and inhospitable for life, but they provide a home for creatures that sometimes occur nowhere else. Tiny beetles that cope with inundation with each high tide, birds that nest on the beach, giant earwigs that live under driftwood and hardy crabs that survive out of the water at low tide are some of the dozens of creatures that live on the edge where the sea meets the land.



Museum events

October School Holidays

Our school holiday programmes continued to be popular. Participants made fossil replicas, built and flew kites, designed clay sculptures and had a really close look at some tiny creatures through microscopes.

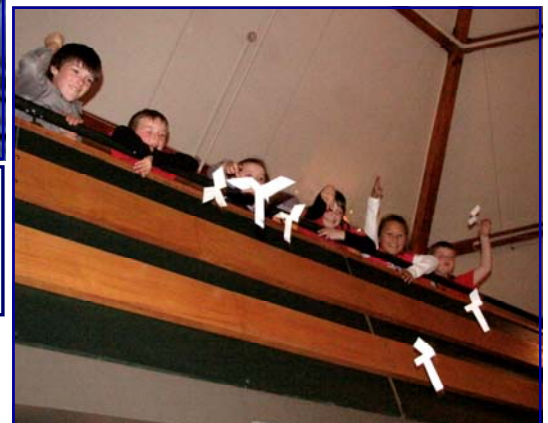
Museum Explorers Club

There are several hundred members of this club, aimed at primary-school-aged children. Recent after school activities have included testing paper "helicopters" (far right), exploring hidden parts of downtown Timaru (centre) and seeing what's living in the Museum gardens (below). Explorers all have a "passport" which is stamped every time they visit the Museum, with rewards for "frequent flyers".



What our visitors are saying....

This is living history at its best. Thank you.
South Island visitor aged 51 - 65



Public talks

Four talks have been given in recent months by authors, including Gordon Ogilvie (left), who spoke about some new findings during our **Rediscovering Richard Pearse** exhibition in October, and Keith Bartholomew (right) who outlined some of his findings while researching and writing the new edition of **The Streets of Timaru**.

Other talks were given by Jean Garner, one of the editors of historical text **Letters to Grace**, and Marlborough-based art historian Jane Via who spoke about historical landscapes in the South Island.



2011 Christmas Parade

For the fourth year in a row, the Museum sallied forth in Timaru's annual Christmas Parade on 3 December. This year a team of staff, Museum Explorers and a couple of parents dressed as either wild things or intrepid explorers. Taking part in the Parade is a fun way to promote the Museum and what it provides for our community.

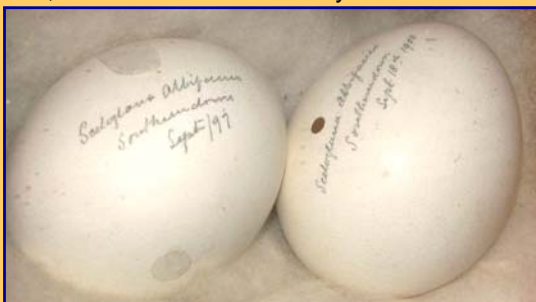


News from the Collections

Owl eggs provide historic dates

A recent request was received from a PhD student in the United States studying extinction rates. She had discovered that our Museum possessed a specimen of the extinct laughing owl, last known from South Canterbury in the early 20th century. Laughing owls were our largest native owl, but were vulnerable to introduced predators while nesting in crevices at the base of cliffs.

While our specimen has no data to tell us where and when it was collected, we do have three laughing owl eggs in the historic Sealy Collection of birds eggs, minerals and butterflies. These have collection locality and date inscribed in pencil, indicating collection in the late 1890s from Albury and Edward Sealy's estate Southerndown. This is now part of suburban Timaru, lying in Highfield north of Wai-iti Rd. This information was very useful for the research request and highlights the value of accurately-recorded scientific specimens, often decades after they were collected.



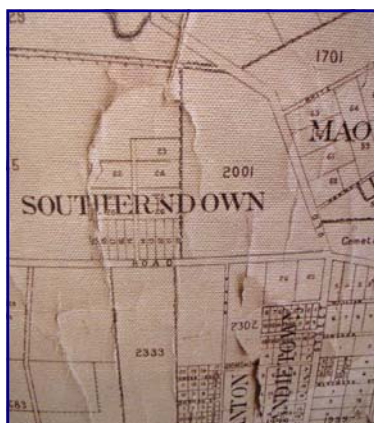
Replica 1882 map created for display

One of the maps featured in the current **Growing Timaru** exhibition is dated from 1882, and features a number of suburb and area names that are no longer in use. As the original map was too damaged to display safely, volunteer photographer Mike Hyman has carefully photographed the map in sections, and then digitally stitched it together to create a large-scale copy. We then had this printed onto canvas for the exhibition.

Below left: The replica 1882 map on display, allowing visitors to get very close to examine the details.



Below: Part of the map showing Southerndown Estate (present-day Park Lane area); the area where the laughing owl eggs shown above were found in 1897.



Packaging to protect and preserve

One of the main roles of a Museum is to ensure the heritage collections in its care are preserved and accessible. To that end we spend a lot of time and effort making sure that the thousands of items held in our store rooms are protected from the agents of decay, and from risk of breakage. Recent events elsewhere in Canterbury have highlighted the need for careful arrangement in storage and display areas, in order to minimise movement.

Items are boxed and buffered, using acid-free boxes, tissue and foam. All items are catalogued on our PastPerfect database system. Using a series of standardised box sizes also allows us to store things in a modular way, improving use of limited space.



Right: Janelle Taylor packs social history items for storage.

Unique garment features in new publication

One of the more enigmatic items in our collection is a sleeved jacket, made from flax and feathers in traditional Maori cloak style. We have no data about who made the garment, where or when it was made. It is quite unusual in representing a European-style garment made from traditional materials.

This garment is now featured in a recent publication by Awhina Tamarapa entitled **Whatu Kakahu - Maori Cloaks**, published by Te Papa Press. This scholarly work drew upon many garments housed in museum collections and will serve as a major reference.

Below: The unusual woven flax and feather jacket; currently on display in the *Stories of Settlement* exhibition area at the South Canterbury Museum.



Heritage Education Service update

Terms 3 and 4 saw our Educators out and about quite a bit. A number of schools took part in nature studies, particularly while on camp. Wendy, Keely and occasionally Philip would take camp groups to particular locations for forest life or stream life studies.

The Heritage Education Service has now developed a wide range of partner organisations that it works with to help develop programmes that meet educational goals for schools. Several schools also worked with us at Pleasant Point Railway and Museum where the volunteer team ensured that students had opportunities to ask questions as well as experience rail travel and see a wide range of fascinating artefacts (see photos at bottom of page).

Another successful partnership is that with Waihao Marae, where Craighead Diocesan School Year 10 students took part in cultural activities, made poi and learned how to use them (see below), and enjoyed a meal cooked in a hangi.

Schools are already booking lessons for Term 1 next year. We look forward to finding new ways to help local students explore our heritage.



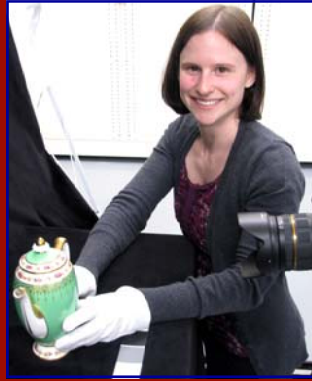
Spreading the word on the internet

Museums have been making considerable use of opportunities provided by the internet to provide information to their audiences, give greater access to their collections and resources, and generally promote what they do.

The South Canterbury Museum now has content in several places on the internet. Our main web pages are found on the Timaru District Council's website at www.timaru.govt.nz/museum. Here virtual visitors can review our services, download documents (such as this newsletter), find out what's on and get a good idea about what the Museum does.

We have also created an additional website to better link schools and our Heritage Education Service. This site enables teachers to review our programmes, make contact and book lessons. It also allows schools to see or download material and photographs that have been put in special folders that only they can access. Obviously security and privacy are issues we need to be mindful of, particularly when working with schools. Have a look at hes.org.nz

We've now also joined the many museums making use of Facebook, the social networking page. Here we can post quick news updates, pictures of events at the Museum, and generally provide a more informal news source for people who are interested in what we do. If you're a Facebook member, we'd love you to "like" us and follow what we do - go to www.facebook.com/SCMuseum.



Canadian Museum Intern Lianne Maitland has been busy photographing collection items for use on our future internet pages and in-house catalogues. Some of her images and research can be seen already on the Museum's page at www.nzmuseums.com



2011 end of year party



Over 170 people took part in the second annual Museum Party on 10 December. A team of Museum personnel, Friends of the Museum and Timaru Lions organised contests and prize draws (right), dispensed sausages (left), hot and cold drinks and Christmas cakes, and generally made sure the Party ran like clockwork. It was great to see so many families taking part, seeing new displays and enjoying the party. We were grateful for the support offered by local station Port FM, members of St Mary's Church who conducted tours of their historic building, and Museum Friend Jeff Elston who obtained so many of the prizes given out. Get ready for December 2012!



Glad I made the effort to come - walking frame and all! Enjoyed a sit-down, cake and drink after 1 1/4 hours on feet. Am about to buy The Streets of Timaru.

Visitor, Timaru, over 65.



Around the Museum

Farewells and welcomes

We said goodbye to our Museum technician Rob Tulley in October. Rob had been with us since 2007, and was instrumental in the success of many of our recent exhibitions with his technical skill and creative flair. A major highlight was his design and construction of the replica ship's cabin for the 150th anniversary **Strathallan** exhibition in late 2008, and its re-establishment in the **Stories of Settlement** exhibition last year.

Right: Rob assembles the first version of the **Strathallan** cabin in the centre of the Museum in late 2008.



Rob's high standard of work, eye for design and willingness to experiment drove many improvements both in exhibitions and behind the scenes. He was a highly-regarded member of the small Museum team and we wish him and his family well for the future.

Russell Armstrong commenced as technician in November, coming from a high school technology teaching background. Having started with the **Growing Timaru** exhibition, he is looking forward to the many design and technical challenges that are coming up.

Our cleaner Mariaan Gericke, who joined us in February left us in late November, and Janelle Taylor has taken up the position. Those fingerprints and nose marks on the cases won't go away by themselves.....

Volunteer Focus: Joanne Knight

Joanne has been working this year with Tony Rippin, Curator of Documentary History, to improve access to our Curatorial library. This collection of books has been developed over the years as a resource for working with our collections. Covering subjects as wide-ranging as fashions to fossils, the Library's books are now being processed according to standard library practice. This will enhance access for Museum team members and the public.



Contact the Museum

Phone (03) 687 7212
Fax (03) 687 7215
Postal PO Box 522, Timaru
NEW ZEALAND
Email museum@timdc.govt.nz
Website www.timaru.govt.nz/museum



Our heritage on show at the Bay



This year we took a tent to the Rose Festival Market Day at Caroline Bay on Sunday 27 November. This event was attended by 10,000 people, and a good

number of them stopped in to view the historic Caroline Bay images we had on show, peruse a copy of **The Streets of Timaru**, or buy historic Caroline Bay posters or postcards. It was a great opportunity for us to promote the Museum and what it does, as well as enjoy a warm day out with a clear view of the acts performing on the Soundshell stage!



What our visitors are saying....

We've noticed in recent months that it's mainly our overseas visitors who are inclined to make comments on their visitor response forms. These have included:

Very good Museum in NZ. The settlement story is very interesting and the 1st floor also. So lovely! Thanks!

Visitor, France, December 2011

I loved how you can identify that time when people lived years ago. Really good job with the videos as well.

Visitor, Paraguay, November 2011

I really liked the exposition objects of the students! Really excellent!

Visitor, Austria, November 2011

Become a friend of the Museum!

Receive this newsletter, invitations to Museum openings and events, members' meetings, discounts on some sales and services at the Museum and more. All Museum Friends are automatically members of parent organisation the South Canterbury Historical Society. And you'll be supporting the Museum, so its **always** a good cause!

Membership forms are available from the Museum. Simply phone, write or email and we'll send one out. But if you can't wait, send us a note with the following details and correct amount and we'll sign you up!

We'll need: Name, Address, Phone no. & email if you have it.

Membership type: Individual	\$20.00
Family	\$25.00
Organisation/Business	\$25.00
Overseas	\$30.00
Life	\$250.00

Send your information and cheque for the correct amount to:

Friends Membership
South Canterbury Museum
PO Box 522,
Timaru 7940