



# SPEED LIMITS

# REGISTER

JUNE 2006



## TABLE OF CONTENTS

TIMARU DISTRICT COUNCIL BY-LAW – CHAPTER 18B	3
<b>TOTAL REGISTER</b>	<b>5</b>
<b>MAPS</b>	<b>38</b>
SPEED LIMITS IN TIMARU DISTRICT	38
TIMARU	39
WOODBURY	40
GERALDINE	41
PEEL FOREST	42
TEMUKA	43
PLEASANT POINT	44
CAVE	45
PAREORA	46
ORARI	47
HILTON	48
WINCHESTER	49
RANGITATA HUTS	50
CLANDEBOYE	51
WAIPOPO	52
ACACIA DRIVE	53
AIRPORT	54
NORMANBY	55

**TIMARU DISTRICT COUNCIL BY-LAW – CHAPTER 18B**

**18B TRAFFIC speed limits 2005**

**Scope**

Pursuant to section 684(1)(13) of the Local Government Act 1974, the Local Government Act 2002 and Land Transport Rule: Setting of Speed Limits 2003 the Timaru District Council makes this by-law to set speed limits as specified in the schedules.

The speed limits described in the schedules come into force on 1 July 2005.

**1801B Interpretation**

“ROAD” means the same as in Land Transport Rule: Setting of Speed Limits 2003.

“SPEED LIMIT” means the same as in Land Transport Rule: Setting of Speed Limits 2003.

“URBAN TRAFFIC AREA” means the same as in Land Transport Rule: Setting of Speed Limits 2003.

**1802B Speed limits**

The roads or areas described in the schedules specified in clause 1803B or as shown on a map referenced in the schedules are declared to have the speed limits specified in the schedules and maps, which are part of this by-law.

**1803B Schedules**

- Schedule 1: Roads that have a speed limit of 20 km/h
- Schedule 2: Roads that have a speed limit of 30 km/h
- Schedule 3: Roads that have a speed limit of 40 km/h (Schedule 3 is not used in this by-law)
- Schedule 4: Urban traffic areas - roads that have a speed limit of 50 km/h
- Schedule 5: Roads that have a speed limit of 60 km/h
- Schedule 6: Roads that have a speed limit of 70 km/h
- Schedule 7: Roads that have a speed limit of 80 km/h
- Schedule 8: Rural areas - roads that have a speed limit of 100 km/h
- Schedule 9: Roads that have a holiday speed limit (Schedule 9 is not used in this by-law)
- Schedule 10: Roads that have a variable speed limit (Schedule 10 is not used in this by-law)

Schedule 11: Roads that have a minimum speed limit (Schedule 11 is not used in this by-law)

**1804B Date by-law made**

This by-law was made by the Timaru District Council at a meeting of the Council on 28 June 2005.

**TOTAL REGISTER**

<b>Road Name</b>	<b>Speed</b>	<b>Location</b>	<b>Town</b>	<b>Legal Instrument</b>	<b>Date</b>	<b>Previous Legal Instrument</b>
Caroline Bay	20		Timaru	Bylaw 18B – Traffic Speed Limits	2005	19 February 1998, No. 28, p. 629
Geraldine Domain	20		Geraldine	Bylaw 18B – Traffic Speed Limits	2005	19 February 1998, No. 28, p. 629
Geraldine Motor Camp	20		Geraldine	Bylaw 18B – Traffic Speed Limits	2005	19 February 1998, No. 28, p. 629
Kennedy Park	20		Geraldine	Bylaw 18B – Traffic Speed Limits	2005	19 February 1998, No. 28, p. 629
Pleasant Point Domain	20		Pleasant Point	Bylaw 18B – Traffic Speed Limits	2005	
Rangitata Huts	20					
Sophia Street	20	between 0m & 140m north of George Street	Timaru	Bylaw 18B – Traffic Speed Limits	2005	19 February 1998, No. 28, p. 629
Stratheona Huts	20					
Stratheona Road	20	between 350m & 540m north of Halstead Road	Pleasant Point	Bylaw 18B – Traffic Speed Limits	2005	
Temuka Domain	20		Temuka	Bylaw 18B – Traffic Speed Limits	2005	10 September 1998, No. 140, p. 3413
Timaru Cemetery	20		Timaru	Bylaw 18B – Traffic Speed Limits	2005	19 February 1998, No. 28, p. 629
West End Park	20		Timaru	Bylaw 18B – Traffic Speed Limits	2005	19 February 1998, No. 28, p. 629
Aorangi Park	30		Timaru	Bylaw 18B – Traffic Speed Limits	2005	19 February 1998, No. 28, p. 629
Botanic Gardens	30	Timaru	Timaru	Bylaw 18B – Traffic Speed Limits	2005	19 February 1998, No. 28, p. 629
Centennial Park Drive	30		Timaru	Bylaw 18B – Traffic Speed Limits	2005	19 February 1998, No. 28, p. 629
Davey Road	30	Milford		Bylaw 18B – Traffic Speed Limits	2005	19 February 1998, No. 28, p. 629
Gresham Street	30	between 30m & 358m west of Darby Street	Geraldine	Bylaw 18B – Traffic Speed Limits	2005	19 February 1998, No. 28, p. 629
Milford Lagoon Road	30	between 0m & 235m north of Stopbank Road		Bylaw 18B – Traffic Speed Limits	2005	
Quarry Road	30	between 340m & 802m west of Otipua Road	Timaru	Bylaw 18B – Traffic Speed Limits	2005	19 February 1998, No. 28, p. 629
Stopbank Road	30	Milford		Bylaw 18B – Traffic Speed Limits	2005	
Waipopo Road	30	between 5640m & 5735m north of Seadown Road	Waipopo	Bylaw 18B – Traffic Speed Limits	2005	1 March 1984, No. 29, page 580
Abbott Street	50		Seadown	Bylaw 18B – Traffic Speed Limits	2005	
Acacia Drive	50		Seadown Settlement	Bylaw 18B – Traffic Speed Limits	2005	6 June 1974, No. 56, p. 1132
Acton Street	50		Pleasant Point	Bylaw 18B – Traffic Speed Limits	2005	2 April 1998, No. 48, p. 1108
Afghan Street	50		Pleasant Point	Bylaw 18B – Traffic Speed Limits	2005	2 April 1998, No. 48, p. 1108
Airport	50			Bylaw 18B – Traffic Speed Limits	2005	

<b>Road Name</b>	<b>Speed</b>	<b>Location</b>	<b>Town</b>	<b>Legal Instrument</b>	<b>Date</b>	<b>Previous Legal Instrument</b>
Albert Street	50		Timaru	Bylaw 18B – Traffic Speed Limits	2005	19 February 1998, No. 28, p. 629
Albert Terrace	50		Winchester	Bylaw 18B – Traffic Speed Limits	2005	5 December 2002, No. 176, p. 4423
Alexandra Street	50	Timaru	Timaru	Bylaw 18B – Traffic Speed Limits	2005	19 February 1998, No. 28, p. 629
Alexandra Street	50	Temuka	Temuka	Bylaw 18B – Traffic Speed Limits	2005	10 September 1998, No. 140, p. 3413
Allnatt Street	50		Temuka	Bylaw 18B – Traffic Speed Limits	2005	10 September 1998, No. 140, p. 3413
Alpine Close	50		Timaru	Bylaw 18B – Traffic Speed Limits	2005	19 February 1998, No. 28, p. 629
Ameer Street	50		Pleasant Point	Bylaw 18B – Traffic Speed Limits	2005	2 April 1998, No. 48, p. 1108
Andrew Street	50	Cave	Cave	Bylaw 18B – Traffic Speed Limits	2005	13 July 2000, No. 78, p. 1890
Andrew Street	50	Timaru	Cave	Bylaw 18B – Traffic Speed Limits	2005	13 July 2000, No. 78, p. 1890
Andrewville Lane	50		Temuka	Bylaw 18B – Traffic Speed Limits	2005	10 September 1998, No. 140, p. 3413
Angland Avenue	50		Timaru	Bylaw 18B – Traffic Speed Limits	2005	19 February 1998, No. 28, p. 629
Anne Street	50		Cave	Bylaw 18B – Traffic Speed Limits	2005	13 July 2000, No. 78, p. 1890
Apsley Street	50		Timaru	Bylaw 18B – Traffic Speed Limits	2005	19 February 1998, No. 28, p. 629
Archer Street	50		Timaru	Bylaw 18B – Traffic Speed Limits	2005	19 February 1998, No. 28, p. 629
Argyle Street	50		Timaru	Bylaw 18B – Traffic Speed Limits	2005	19 February 1998, No. 28, p. 629
Arthur Street	50		Timaru	Bylaw 18B – Traffic Speed Limits	2005	19 February 1998, No. 28, p. 629
Arthur Street	50	Hilton	Hilton	Bylaw 18B – Traffic Speed Limits	2005	19 February 1998, No. 28, p. 629
Arun Street	50		Timaru	Bylaw 18B – Traffic Speed Limits	2005	19 February 1998, No. 28, p. 629
Ascot Street	50		Timaru	Bylaw 18B – Traffic Speed Limits	2005	19 February 1998, No. 28, p. 629
Ashbury Avenue	50		Timaru	Bylaw 18B – Traffic Speed Limits	2005	19 February 1998, No. 28, p. 629
Athol Place	50		Timaru	Bylaw 18B – Traffic Speed Limits	2005	19 February 1998, No. 28, p. 629
Avenel Street	50		Winchester	Bylaw 18B – Traffic Speed Limits	2005	5 December 2002, No. 176, p. 4423
Avenue Road	50		Timaru	Bylaw 18B – Traffic Speed Limits	2005	19 February 1998, No. 28, p. 629
Aviemore Street	50		Timaru	Bylaw 18B – Traffic Speed Limits	2005	19 February 1998, No. 28, p. 629
Aynsley Street	50		Timaru	Bylaw 18B – Traffic Speed Limits	2005	19 February 1998, No. 28, p. 629
Ayr Street	50		Timaru	Bylaw 18B – Traffic Speed Limits	2005	19 February 1998, No. 28, p. 629
Babington Street	50		Timaru	Bylaw 18B – Traffic Speed Limits	2005	19 February 1998, No. 28, p. 629
Baker Street	50	Timaru	Timaru	Bylaw 18B – Traffic Speed Limits	2005	19 February 1998, No. 28, p. 629
Baker Street	50	Winchester	Timaru	Bylaw 18B – Traffic Speed Limits	2005	19 February 1998, No. 28, p. 629
Balmoral Street	50		Timaru	Bylaw 18B – Traffic Speed Limits	2005	19 February 1998, No. 28, p. 629
Bank Street	50		Timaru	Bylaw 18B – Traffic Speed Limits	2005	19 February 1998, No. 28, p. 629
Barker Street	50		Geraldine	Bylaw 18B – Traffic Speed Limits	2005	19 February 1998, No. 28, p. 629

Road Name	Speed	Location	Town	Legal Instrument	Date	Previous Legal Instrument
Barnard Street	50		Timaru	Bylaw 18B – Traffic Speed Limits	2005	19 February 1998, No. 28, p. 629
Barnes Street	50		Timaru	Bylaw 18B – Traffic Speed Limits	2005	19 February 1998, No. 28, p. 629
Barrett Road	50		Waipopo	Bylaw 18B – Traffic Speed Limits	2005	8 August 1998, No. 107, p. 2635
Bath Street	50		Timaru	Bylaw 18B – Traffic Speed Limits	2005	19 February 1998, No. 28, p. 629
Bayview Place	50					
Beaconsfield Flat Road	50	between Beaconsfield Road and 70m west of Bath Street			2005	
Beaumont Street	50		Timaru	Bylaw 18B – Traffic Speed Limits	2005	19 February 1998, No. 28, p. 629
Belfield Street	50		Timaru	Bylaw 18B – Traffic Speed Limits	2005	19 February 1998, No. 28, p. 629
Bell Street	50		Geraldine	Bylaw 18B – Traffic Speed Limits	2005	19 February 1998, No. 28, p. 629
Benmore Street	50		Timaru	Bylaw 18B – Traffic Speed Limits	2005	19 February 1998, No. 28, p. 629
Benvenue Avenue	50		Timaru	Bylaw 18B – Traffic Speed Limits	2005	19 February 1998, No. 28, p. 629
Beswick Street	50		Timaru	Bylaw 18B – Traffic Speed Limits	2005	19 February 1998, No. 28, p. 629
Beverley Hill	50		Timaru	Bylaw 18B – Traffic Speed Limits	2005	19 February 1998, No. 28, p. 629
Beverley Road	50		Timaru	Bylaw 18B – Traffic Speed Limits	2005	19 February 1998, No. 28, p. 629
Bidwill Street	50		Timaru	Bylaw 18B – Traffic Speed Limits	2005	19 February 1998, No. 28, p. 629
Birch Street	50		Timaru	Bylaw 18B – Traffic Speed Limits	2005	19 February 1998, No. 28, p. 629
Birkett Street	50		Temuka	Bylaw 18B – Traffic Speed Limits	2005	10 September 1998, No. 140, p. 3413
Bouverie Street	50		Timaru	Bylaw 18B – Traffic Speed Limits	2005	19 February 1998, No. 28, p. 629
Bowker Street	50		Timaru	Bylaw 18B – Traffic Speed Limits	2005	19 February 1998, No. 28, p. 629
Bradley Street	50		Timaru	Bylaw 18B – Traffic Speed Limits	2005	19 February 1998, No. 28, p. 629
Braemar Place	50		Timaru	Bylaw 18B – Traffic Speed Limits	2005	19 February 1998, No. 28, p. 629
Branscombe Street	50		Timaru	Bylaw 18B – Traffic Speed Limits	2005	19 February 1998, No. 28, p. 629
Brenda Street	50		Timaru	Bylaw 18B – Traffic Speed Limits	2005	19 February 1998, No. 28, p. 629
Bridge Road	50	Timaru	Timaru	Bylaw 18B – Traffic Speed Limits	2005	19 February 1998, No. 28, p. 629
Bridge Street	50	Geraldine	Geraldine	Bylaw 18B – Traffic Speed Limits	2005	19 February 1998, No. 28, p. 629
Bridge Street	50	Temuka	Temuka	Bylaw 18B – Traffic Speed Limits	2005	19 February 1998, No. 28, p. 629
Bristol Street	50				2005	10 September 1998, No. 140, p. 3413
Broadway Avenue	50		Timaru	Bylaw 18B – Traffic Speed Limits	2005	19 February 1998, No. 28, p. 629
Browne Street	50		Timaru	Bylaw 18B – Traffic Speed Limits	2005	19 February 1998, No. 28, p. 629
Browning Street	50		Winchester	Bylaw 18B – Traffic Speed Limits	2005	5 December 2002, No. 176, p. 4423
Brunswick Street	50		Timaru	Bylaw 18B – Traffic Speed Limits	2005	19 February 1998, No. 28, p. 629
Buchanan Street	50		Timaru	Bylaw 18B – Traffic Speed Limits	2005	19 February 1998, No. 28, p. 629

Road Name	Speed	Location	Town	Legal Instrument	Date	Previous Legal Instrument
Burgess Street	50		Pleasant Point	Bylaw 18B – Traffic Speed Limits	2005	2 April 1998, No. 48, p. 1108
Burke Street	50		Pleasant Point	Bylaw 18B – Traffic Speed Limits	2005	2 April 1998, No. 48, p. 1108
Burnett Street	50		Timaru	Bylaw 18B – Traffic Speed Limits	2005	19 February 1998, No. 28, p. 629
Butler Street	50		Timaru	Bylaw 18B – Traffic Speed Limits	2005	19 February 1998, No. 28, p. 629
Cain Street	50		Timaru	Bylaw 18B – Traffic Speed Limits	2005	19 February 1998, No. 28, p. 629
Cains Terrace	50		Timaru	Bylaw 18B – Traffic Speed Limits	2005	19 February 1998, No. 28, p. 629
Cambridge Street	50		Timaru	Bylaw 18B – Traffic Speed Limits	2005	19 February 1998, No. 28, p. 629
Cameron Street	50		Timaru	Bylaw 18B – Traffic Speed Limits	2005	19 February 1998, No. 28, p. 629
Campbell Street	50	Geraldine	Geraldine	Bylaw 18B – Traffic Speed Limits	2005	19 February 1998, No. 28, p. 629
Campbell Street	50	Timaru	Timaru	Bylaw 18B – Traffic Speed Limits	2005	19 February 1998, No. 28, p. 629
Canada Street	50		Timaru	Bylaw 18B – Traffic Speed Limits	2005	19 February 1998, No. 28, p. 629
Canon Street	50		Timaru	Bylaw 18B – Traffic Speed Limits	2005	19 February 1998, No. 28, p. 629
Cardiff Street	50		Timaru	Bylaw 18B – Traffic Speed Limits	2005	19 February 1998, No. 28, p. 629
Carlisle Place	50		Timaru	Bylaw 18B – Traffic Speed Limits	2005	19 February 1998, No. 28, p. 629
Cascade Place	50		Timaru	Bylaw 18B – Traffic Speed Limits	2005	19 February 1998, No. 28, p. 629
Cass Street	50		Temuka	Bylaw 18B – Traffic Speed Limits	2005	10 September 1998, No. 140, p. 3413
Catherine Street	50		Timaru	Bylaw 18B – Traffic Speed Limits	2005	19 February 1998, No. 28, p. 629
Cedar Place	50		Timaru	Bylaw 18B – Traffic Speed Limits	2005	19 February 1998, No. 28, p. 629
Cemetery Hill	50		Timaru	Bylaw 18B – Traffic Speed Limits	2005	19 February 1998, No. 28, p. 629
Chalmers Street	50		Timaru	Bylaw 18B – Traffic Speed Limits	2005	19 February 1998, No. 28, p. 629
Chapel Street	50		Timaru	Bylaw 18B – Traffic Speed Limits	2005	19 February 1998, No. 28, p. 629
Charles Street	50		Cave	Bylaw 18B – Traffic Speed Limits	2005	13 July 2000, No. 78, p. 1890
Chateau Close	50		Timaru	Bylaw 18B – Traffic Speed Limits	2005	19 February 1998, No. 28, p. 629
Chaucer Street	50		Timaru	Bylaw 18B – Traffic Speed Limits	2005	19 February 1998, No. 28, p. 629
Church Street	50	Timaru	Timaru	Bylaw 18B – Traffic Speed Limits	2005	19 February 1998, No. 28, p. 629
Claremont Road	50	between 0m & 323m west of Gleniti Road	Timaru	Bylaw 18B – Traffic Speed Limits	2005	19 February 1998, No. 28, p. 629
Cliff Street	50		Timaru	Bylaw 18B – Traffic Speed Limits	2005	19 February 1998, No. 28, p. 629
Clifford Street	50		Timaru	Bylaw 18B – Traffic Speed Limits	2005	19 February 1998, No. 28, p. 629
Clifton Terrace	50		Timaru	Bylaw 18B – Traffic Speed Limits	2005	19 February 1998, No. 28, p. 629
Climie Terrace	50		Timaru	Bylaw 18B – Traffic Speed Limits	2005	19 February 1998, No. 28, p. 629
Clyde Carr Crescent	50		Timaru	Bylaw 18B – Traffic Speed Limits	2005	19 February 1998, No. 28, p. 629
Clyde Street	50		Timaru	Bylaw 18B – Traffic Speed Limits	2005	19 February 1998, No. 28, p. 629
Coles Street	50		Geraldine	Bylaw 18B – Traffic Speed Limits	2005	19 February 1998, No. 28, p. 629
College Road	50		Timaru	Bylaw 18B – Traffic Speed Limits	2005	19 February 1998, No. 28, p. 629
Collingwood Street	50		Timaru	Bylaw 18B – Traffic Speed Limits	2005	19 February 1998, No. 28, p. 629

<b>Road Name</b>	<b>Speed</b>	<b>Location</b>	<b>Town</b>	<b>Legal Instrument</b>	<b>Date</b>	<b>Previous Legal Instrument</b>
Collins Street	50		Timaru	Bylaw 18B – Traffic Speed Limits	2005	19 February 1998, No. 28, p. 629
Commerce Street	50		Temuka	Bylaw 18B – Traffic Speed Limits	2005	10 September 1998, No. 140, p. 3413
Connolly Street	50		Geraldine	Bylaw 18B – Traffic Speed Limits	2005	19 February 1998, No. 28, p. 629
Cook Street	50		Timaru	Bylaw 18B – Traffic Speed Limits	2005	19 February 1998, No. 28, p. 629
Coonoor Road	50		Timaru	Bylaw 18B – Traffic Speed Limits	2005	19 February 1998, No. 28, p. 629
Cornwall Street	50		Timaru	Bylaw 18B – Traffic Speed Limits	2005	19 February 1998, No. 28, p. 629
Coulter Place	50		Geraldine	Bylaw 18B – Traffic Speed Limits	2005	19 February 1998, No. 28, p. 629
Craighead Street	50		Timaru	Bylaw 18B – Traffic Speed Limits	2005	19 February 1998, No. 28, p. 629
Cross Street	50	Timaru	Timaru	Bylaw 18B – Traffic Speed Limits	2005	19 February 1998, No. 28, p. 629
Cross Street	50	Geraldine	Geraldine	Bylaw 18B – Traffic Speed Limits	2005	19 February 1998, No. 28, p. 629
Cross Street	50	Temuka	Temuka	Bylaw 18B – Traffic Speed Limits	2005	10 September 1998, No. 140, p. 3413
Dampier Street	50		Timaru	Bylaw 18B – Traffic Speed Limits	2005	19 February 1998, No. 28, p. 629
Darby Street	50		Geraldine	Bylaw 18B – Traffic Speed Limits	2005	19 February 1998, No. 28, p. 629
Davidson Street	50		Temuka	Bylaw 18B – Traffic Speed Limits	2005	10 September 1998, No. 140, p. 3413
Davie Street	50	Temuka	Temuka	Bylaw 18B – Traffic Speed Limits	2005	10 September 1998, No. 140, p. 3413
Davies Street	50	Geraldine	Geraldine	Bylaw 18B – Traffic Speed Limits	2005	19 February 1998, No. 28, p. 629
Dawson Street	50		Timaru	Bylaw 18B – Traffic Speed Limits	2005	19 February 1998, No. 28, p. 629
Deal Street	50		Timaru	Bylaw 18B – Traffic Speed Limits	2005	19 February 1998, No. 28, p. 629
Dee Street	50		Timaru	Bylaw 18B – Traffic Speed Limits	2005	19 February 1998, No. 28, p. 629
Denmark Street	50		Temuka	Bylaw 18B – Traffic Speed Limits	2005	10 September 1998, No. 140, p. 3413
Devon Street	50		Timaru	Bylaw 18B – Traffic Speed Limits	2005	19 February 1998, No. 28, p. 629
Dobson Street	50		Timaru	Bylaw 18B – Traffic Speed Limits	2005	19 February 1998, No. 28, p. 629
Domain Avenue	50	Temuka	Temuka	Bylaw 18B – Traffic Speed Limits	2005	10 September 1998, No. 140, p. 3413
Domain Avenue	50	Timaru	Timaru	Bylaw 18B – Traffic Speed Limits	2005	19 February 1998, No. 28, p. 629
Donald Street	50		Timaru	Bylaw 18B – Traffic Speed Limits	2005	19 February 1998, No. 28, p. 629
Doncaster Street	50		Timaru	Bylaw 18B – Traffic Speed Limits	2005	19 February 1998, No. 28, p. 629
Douglas Street	50		Timaru	Bylaw 18B – Traffic Speed Limits	2005	19 February 1998, No. 28, p. 629
Downs Road	50	between 0m & 70m west of Hewling Street	Timaru	Bylaw 18B – Traffic Speed Limits	2005	19 February 1998, No. 28, p. 629
Dunkirk Street	50		Timaru	Bylaw 18B – Traffic Speed Limits	2005	19 February 1998, No. 28, p. 629
Dunvegan Close	50		Timaru	Bylaw 18B – Traffic Speed Limits	2005	19 February 1998, No. 28, p. 629
Dyson Street	50		Temuka	Bylaw 18B – Traffic Speed Limits	2005	10 September 1998, No. 140, p. 3413

<b>Road Name</b>	<b>Speed</b>	<b>Location</b>	<b>Town</b>	<b>Legal Instrument</b>	<b>Date</b>	<b>Previous Legal Instrument</b>
Edward Street	50		Timaru	Bylaw 18B – Traffic Speed Limits	2005	19 February 1998, No. 28, p. 629
Elginshire Street	50		Timaru	Bylaw 18B – Traffic Speed Limits	2005	19 February 1998, No. 28, p. 629
Elizabeth Place	50	Timaru	Timaru	Bylaw 18B – Traffic Speed Limits	2005	19 February 1998, No. 28, p. 629
Elizabeth Street	50	Timaru	Timaru	Bylaw 18B – Traffic Speed Limits	2005	19 February 1998, No. 28, p. 629
Elizabeth Street	50	between 100m & 856m east of Cave Pareora Roa	Cave	Bylaw 18B – Traffic Speed Limits	2005	13 July 2000, No. 78, p. 1890
Ellesmere Place	50		Timaru	Bylaw 18B – Traffic Speed Limits	2005	19 February 1998, No. 28, p. 629
Elmsdale Terrace	50		Timaru	Bylaw 18B – Traffic Speed Limits	2005	19 February 1998, No. 28, p. 629
Elworthy Street	50		Winchester	Bylaw 18B – Traffic Speed Limits	2005	
Erskine Street	50		Winchester	Bylaw 18B – Traffic Speed Limits	2005	5 December 2002, No. 176, p. 4423
Essex Street	50		Timaru	Bylaw 18B – Traffic Speed Limits	2005	19 February 1998, No. 28, p. 629
Evans Street	50	Temuka	Temuka	Bylaw 18B – Traffic Speed Limits	2005	10 September 1998, No. 140, p. 3413
Eversley Street	50		Timaru	Bylaw 18B – Traffic Speed Limits	2005	19 February 1998, No. 28, p. 629
Ewen Road	50		Temuka	Bylaw 18B – Traffic Speed Limits	2005	10 September 1998, No. 140, p. 3413
Factory Road	50	between 0m & 220m north of Richard Pearse Drive	Temuka	Bylaw 18B – Traffic Speed Limits	2005	10 September 1998, No. 140, p. 3413
Fairview Road	50	between 0m & 360m southwest of Landsborough Road	Timaru	Bylaw 18B – Traffic Speed Limits	2005	19 February 1998, No. 28, p. 629
Fergusson Street	50	Geraldine	Geraldine	Bylaw 18B – Traffic Speed Limits	2005	19 February 1998, No. 28, p. 629
Ferrier Road	50		Winchester	Bylaw 18B – Traffic Speed Limits	2005	5 December 2002, No. 176, p. 4423
Flatman Crescent	50		Geraldine	Bylaw 18B – Traffic Speed Limits	2005	19 February 1998, No. 28, p. 629
Flemington Street	50		Timaru	Bylaw 18B – Traffic Speed Limits	2005	19 February 1998, No. 28, p. 629
Flinders Street	50		Timaru	Bylaw 18B – Traffic Speed Limits	2005	19 February 1998, No. 28, p. 629
Forest Road	50		Geraldine	Bylaw 18B – Traffic Speed Limits	2005	19 February 1998, No. 28, p. 629
Forth Street	50		Timaru	Bylaw 18B – Traffic Speed Limits	2005	19 February 1998, No. 28, p. 629
Fox Street	50		Temuka	Bylaw 18B – Traffic Speed Limits	2005	10 September 1998, No. 140, p. 3413
Fraser Street	50	Temuka	Temuka	Bylaw 18B – Traffic Speed Limits	2005	10 September 1998, No. 140, p. 3413
Fraser Street	50	Timaru	Timaru	Bylaw 18B – Traffic Speed Limits	2005	19 February 1998, No. 28, p. 629
Frederick Street	50		Pleasant Point	Bylaw 18B – Traffic Speed Limits	2005	2 April 1998, No. 48, p. 1108
Galbraith Place	50		Temuka	Bylaw 18B – Traffic Speed Limits	2005	10 September 1998, No. 140, p. 3413

<b>Road Name</b>	<b>Speed</b>	<b>Location</b>	<b>Town</b>	<b>Legal Instrument</b>	<b>Date</b>	<b>Previous Legal Instrument</b>
Gammack Street	50		Timuka	Bylaw 18B – Traffic Speed Limits	2005	10 September 1998, No. 140, p. 3413
George Street	50	Timaru	Timaru	Bylaw 18B – Traffic Speed Limits	2005	19 February 1998, No. 28, p. 629
George Street	50	Geraldine	Geraldine	Bylaw 18B – Traffic Speed Limits	2005	19 February 1998, No. 28, p. 629
George Street	50	Pleasant Point	Pleasant Point	Bylaw 18B – Traffic Speed Limits	2005	2 April 1998, No. 48, p. 1108
Georgetown Road	50		Timaru	Bylaw 18B – Traffic Speed Limits	2005	19 February 1998, No. 28, p. 629
Gibson Street	50		Timaru	Bylaw 18B – Traffic Speed Limits	2005	19 February 1998, No. 28, p. 629
Gladstone Road	50		Timaru	Bylaw 18B – Traffic Speed Limits	2005	19 February 1998, No. 28, p. 629
Glamis Street	50		Timaru	Bylaw 18B – Traffic Speed Limits	2005	19 February 1998, No. 28, p. 629
Glen Street	50		Timaru	Bylaw 18B – Traffic Speed Limits	2005	19 February 1998, No. 28, p. 629
Gleniti Road	50	between 0m & 1135m north of Wai-iti Road	Timaru	Bylaw 18B – Traffic Speed Limits	2005	19 February 1998, No. 28, p. 629
Glenview Terrace	50		Timaru	Bylaw 18B – Traffic Speed Limits	2005	19 February 1998, No. 28, p. 629
Glenwood Avenue	50		Timaru	Bylaw 18B – Traffic Speed Limits	2005	19 February 1998, No. 28, p. 629
Gloucester Street	50		Timaru	Bylaw 18B – Traffic Speed Limits	2005	19 February 1998, No. 28, p. 629
Godley Place	50		Timaru	Bylaw 18B – Traffic Speed Limits	2005	19 February 1998, No. 28, p. 629
Godley Street	50		Timuka	Bylaw 18B – Traffic Speed Limits	2005	10 September 1998, No. 140, p. 3413
Goulds Road	50		Timaru	Bylaw 18B – Traffic Speed Limits	2005	19 February 1998, No. 28, p. 629
Grandi Avenue	50		Timaru	Bylaw 18B – Traffic Speed Limits	2005	19 February 1998, No. 28, p. 629
Grange Close	50		Timaru	Bylaw 18B – Traffic Speed Limits	2005	19 February 1998, No. 28, p. 629
Grange Settlement Road	50	between 0m & 140m north of Richard Pearse Drive	Timuka	Bylaw 18B – Traffic Speed Limits	2005	10 September 1998, No. 140, p. 3413
Grant Street	50		Timaru	Bylaw 18B – Traffic Speed Limits	2005	19 February 1998, No. 28, p. 629
Grantlea Drive	50		Timaru	Bylaw 18B – Traffic Speed Limits	2005	19 February 1998, No. 28, p. 629
Grants Road	50		Timaru	Bylaw 18B – Traffic Speed Limits	2005	19 February 1998, No. 28, p. 629
Grasmere Street	50		Timaru	Bylaw 18B – Traffic Speed Limits	2005	19 February 1998, No. 28, p. 629
Greig Street	50		Pleasant Point	Bylaw 18B – Traffic Speed Limits	2005	2 April 1998, No. 48, p. 1108
Gresham Street	50	between 0m & 30m west of Darby Street	Geraldine	Bylaw 18B – Traffic Speed Limits	2005	19 February 1998, No. 28, p. 629
Grey Road	50		Timaru	Bylaw 18B – Traffic Speed Limits	2005	19 February 1998, No. 28, p. 629
Guild Road	50	between 0m & 130m north of Richard Pearse Drive	Timaru	Bylaw 18B – Traffic Speed Limits	2005	19 February 1998, No. 28, p. 629
Guinness Street	50		Timaru	Bylaw 18B – Traffic Speed Limits	2005	19 February 1998, No. 28, p. 629

Road Name	Speed	Location	Town	Legal Instrument	Date	Previous Legal Instrument
Guise Street	50		Temuka	Bylaw 18B – Traffic Speed Limits	2005	10 September 1998, No. 140, p. 3413
Guise Street North	50		Temuka	Bylaw 18B – Traffic Speed Limits	2005	10 September 1998, No. 140, p. 3413
Guthrie Street	50		Timaru	Bylaw 18B – Traffic Speed Limits	2005	19 February 1998, No. 28, p. 629
Hall Street	50		Timaru	Bylaw 18B – Traffic Speed Limits	2005	19 February 1998, No. 28, p. 629
Hally Terrace	50		Temuka	Bylaw 18B – Traffic Speed Limits	2005	10 September 1998, No. 140, p. 3413
Hailestead Road	50	between 0m & 540m north of SH8	Pleasant Point	Bylaw 18B – Traffic Speed Limits	2005	2 April 1998, No. 48, p. 1108
Hamilton Street	50		Temuka	Bylaw 18B – Traffic Speed Limits	2005	10 September 1998, No. 140, p. 3413
Hanan Place	50		Timaru	Bylaw 18B – Traffic Speed Limits	2005	19 February 1998, No. 28, p. 629
Harborough Street	50		Timaru	Bylaw 18B – Traffic Speed Limits	2005	19 February 1998, No. 28, p. 629
Harper Street	50		Timaru	Bylaw 18B – Traffic Speed Limits	2005	19 February 1998, No. 28, p. 629
Harris Place	50		Temuka	Bylaw 18B – Traffic Speed Limits	2005	10 September 1998, No. 140, p. 3413
Harris Street	50	Pleasant Point	Pleasant Point	Bylaw 18B – Traffic Speed Limits	2005	2 April 1998, No. 48, p. 1108
Harris Street	50	Geraldine	Geraldine	Bylaw 18B – Traffic Speed Limits	2005	19 February 1998, No. 28, p. 629
Hart Street	50		Timaru	Bylaw 18B – Traffic Speed Limits	2005	19 February 1998, No. 28, p. 629
Hartley Crescent	50		Timaru	Bylaw 18B – Traffic Speed Limits	2005	19 February 1998, No. 28, p. 629
Hassall Street	50		Timaru	Bylaw 18B – Traffic Speed Limits	2005	19 February 1998, No. 28, p. 629
Hatton Street	50		Timaru	Bylaw 18B – Traffic Speed Limits	2005	19 February 1998, No. 28, p. 629
Havelock Street	50		Timaru	Bylaw 18B – Traffic Speed Limits	2005	19 February 1998, No. 28, p. 629
Hawea Street	50		Timaru	Bylaw 18B – Traffic Speed Limits	2005	19 February 1998, No. 28, p. 629
Hawkey Street	50		Timaru	Bylaw 18B – Traffic Speed Limits	2005	19 February 1998, No. 28, p. 629
Hawthorn Place	50		Timaru	Bylaw 18B – Traffic Speed Limits	2005	19 February 1998, No. 28, p. 629
Hayes Street	50		Timaru	Bylaw 18B – Traffic Speed Limits	2005	19 February 1998, No. 28, p. 629
Hayhurst Street	50		Temuka	Bylaw 18B – Traffic Speed Limits	2005	10 September 1998, No. 140, p. 3413
Hayhurst Street North	50		Temuka	Bylaw 18B – Traffic Speed Limits	2005	10 September 1998, No. 140, p. 3413
Hayman Street	50		Timaru	Bylaw 18B – Traffic Speed Limits	2005	19 February 1998, No. 28, p. 629
Heath Street	50		Timaru	Bylaw 18B – Traffic Speed Limits	2005	19 February 1998, No. 28, p. 629
Heaton Street	50		Timaru	Bylaw 18B – Traffic Speed Limits	2005	19 February 1998, No. 28, p. 629
Hertford Street	50		Timaru	Bylaw 18B – Traffic Speed Limits	2005	19 February 1998, No. 28, p. 629
Hertnon Street	50		Timaru	Bylaw 18B – Traffic Speed Limits	2005	19 February 1998, No. 28, p. 629

<b>Road Name</b>	<b>Speed</b>	<b>Location</b>	<b>Town</b>	<b>Legal Instrument</b>	<b>Date</b>	<b>Previous Legal Instrument</b>
Hewlings Place	50		Temuka	Bylaw 18B – Traffic Speed Limits	2005	10 September 1998, No. 140, p. 3413
Hewlings Street	50	Geraldine	Geraldine	Bylaw 18B – Traffic Speed Limits	2005	19 February 1998, No. 28, p. 629
Hewlings Street	50	Timaru	Timaru	Bylaw 18B – Traffic Speed Limits	2005	19 February 1998, No. 28, p. 629
High Street	50	Geraldine	Geraldine	Bylaw 18B – Traffic Speed Limits	2005	19 February 1998, No. 28, p. 629
High Street	50	Timaru	Timaru	Bylaw 18B – Traffic Speed Limits	2005	19 February 1998, No. 28, p. 629
High Street	50	Otipua		Bylaw 18B – Traffic Speed Limits	2005	
Hill View Crescent	50		Timaru	Bylaw 18B – Traffic Speed Limits	2005	19 February 1998, No. 28, p. 629
Hillsden Place	50		Timaru	Bylaw 18B – Traffic Speed Limits	2005	19 February 1998, No. 28, p. 629
Hillview Place	50		Pleasant Point	Bylaw 18B – Traffic Speed Limits	2005	2 April 1998, No. 48, p. 1108
Hinau Place	50		Timaru	Bylaw 18B – Traffic Speed Limits	2005	19 February 1998, No. 28, p. 629
Hislop Street	50		Geraldine	Bylaw 18B – Traffic Speed Limits	2005	19 February 1998, No. 28, p. 629
Hobbs Street	50		Timaru	Bylaw 18B – Traffic Speed Limits	2005	19 February 1998, No. 28, p. 629
Holland Street	50		Temuka	Bylaw 18B – Traffic Speed Limits	2005	10 September 1998, No. 140, p. 3413
Holmglen Street	50		Timaru	Bylaw 18B – Traffic Speed Limits	2005	19 February 1998, No. 28, p. 629
Hopkins Street	50		Timaru	Bylaw 18B – Traffic Speed Limits	2005	19 February 1998, No. 28, p. 629
Hornbrook Street	50		Temuka	Bylaw 18B – Traffic Speed Limits	2005	10 September 1998, No. 140, p. 3413
Hornbrook Street North	50		Temuka	Bylaw 18B – Traffic Speed Limits	2005	10 September 1998, No. 140, p. 3413
Horton Street	50		Pleasant Point	Bylaw 18B – Traffic Speed Limits	2005	2 April 1998, No. 48, p. 1108
Huffey Street	50		Geraldine	Bylaw 18B – Traffic Speed Limits	2005	19 February 1998, No. 28, p. 629
Hugh Street	50		Timaru	Bylaw 18B – Traffic Speed Limits	2005	19 February 1998, No. 28, p. 629
Huirapa Street	50			Bylaw 18B – Traffic Speed Limits	2005	
Hunt Street	50		Timaru	Bylaw 18B – Traffic Speed Limits	2005	19 February 1998, No. 28, p. 629
Hurdley Street	50		Timaru	Bylaw 18B – Traffic Speed Limits	2005	19 February 1998, No. 28, p. 629
Huxley Street	50		Timaru	Bylaw 18B – Traffic Speed Limits	2005	19 February 1998, No. 28, p. 629
Irvine Street	50		Timaru	Bylaw 18B – Traffic Speed Limits	2005	19 February 1998, No. 28, p. 629
Jackson Street	50		Timaru	Bylaw 18B – Traffic Speed Limits	2005	19 February 1998, No. 28, p. 629
James Street	50		Timaru	Bylaw 18B – Traffic Speed Limits	2005	19 February 1998, No. 28, p. 629
Jellicoe Street	50		Timaru	Bylaw 18B – Traffic Speed Limits	2005	19 February 1998, No. 28, p. 629
John Street	50		Temuka	Bylaw 18B – Traffic Speed Limits	2005	10 September 1998, No. 140, p. 3413
John Street Lane	50		Temuka	Bylaw 18B – Traffic Speed Limits	2005	10 September 1998, No. 140, p. 3413

<b>Road Name</b>	<b>Speed</b>	<b>Location</b>	<b>Town</b>	<b>Legal Instrument</b>	<b>Date</b>	<b>Previous Legal Instrument</b>
John Street North	50		Temuka	Bylaw 18B – Traffic Speed Limits	2005	3413 10 September 1998, No. 140, p. 3413
Jollie Street	50		Geraldine	Bylaw 18B – Traffic Speed Limits	2005	19 February 1998, No. 28, p. 629
Jonas Street	50		Timaru	Bylaw 18B – Traffic Speed Limits	2005	19 February 1998, No. 28, p. 629
June Street	50		Timaru	Bylaw 18B – Traffic Speed Limits	2005	19 February 1998, No. 28, p. 629
Kabul Street	50		Pleasant Point	Bylaw 18B – Traffic Speed Limits	2005	2 April 1998, No. 48, p. 1108
Kandahar Street	50		Pleasant Point	Bylaw 18B – Traffic Speed Limits	2005	2 April 1998, No. 48, p. 1108
Karaka Street	50		Timaru	Bylaw 18B – Traffic Speed Limits	2005	19 February 1998, No. 28, p. 629
Kauri Street	50	Pleasant Point	Pleasant Point	Bylaw 18B – Traffic Speed Limits	2005	2 April 1998, No. 48, p. 1108
Kauri Street	50	Timaru	Timaru	Bylaw 18B – Traffic Speed Limits	2005	19 February 1998, No. 28, p. 629
Keith Street	50		Timaru	Bylaw 18B – Traffic Speed Limits	2005	19 February 1998, No. 28, p. 629
Kellands Hill Road	50	between 0m & 60m north of Pages Road	Timaru	Bylaw 18B – Traffic Speed Limits	2005	19 February 1998, No. 28, p. 629
Kelvin Street	50		Timaru	Bylaw 18B – Traffic Speed Limits	2005	19 February 1998, No. 28, p. 629
Kennedy Street	50	between 0m & 240m west of Talbot Street	Timaru	Bylaw 18B – Traffic Speed Limits	2005	19 February 1998, No. 28, p. 629
Kent Street	50		Geraldine	Bylaw 18B – Traffic Speed Limits	2005	19 February 1998, No. 28, p. 629
Khan Street	50		Timaru	Bylaw 18B – Traffic Speed Limits	2005	19 February 1998, No. 28, p. 629
Killick Place	50		Timaru	Bylaw 18B – Traffic Speed Limits	2005	19 February 1998, No. 28, p. 629
King George Place	50		Timaru	Bylaw 18B – Traffic Speed Limits	2005	19 February 1998, No. 28, p. 629
King Street	50	Pareora	Timaru	Bylaw 18B – Traffic Speed Limits	2005	19 February 1998, No. 28, p. 629
King Street	50	Between SH1 and Donald Street	Timaru	Bylaw 18B – Traffic Speed Limits	2005	19 February 1998, No. 28, p. 629
King Street South	50		Timaru	Bylaw 18B – Traffic Speed Limits	2005	10 September 1998, No. 140, p. 3413
Kitchener Square	50	Temuka	Timaru	Bylaw 18B – Traffic Speed Limits	2005	19 February 1998, No. 28, p. 629
Kiwi Drive	50		Timaru	Bylaw 18B – Traffic Speed Limits	2005	19 February 1998, No. 28, p. 629
Konini Street	50		Timaru	Bylaw 18B – Traffic Speed Limits	2005	19 February 1998, No. 28, p. 629
Koromiko Street	50		Timaru	Bylaw 18B – Traffic Speed Limits	2005	19 February 1998, No. 28, p. 629
Kowhai Street	50		Timaru	Bylaw 18B – Traffic Speed Limits	2005	19 February 1998, No. 28, p. 629
Kumara Terrace	50		Pleasant Point	Bylaw 18B – Traffic Speed Limits	2005	2 April 1998, No. 48, p. 1108
Kyber Street	50		Pleasant Point	Bylaw 18B – Traffic Speed Limits	2005	2 April 1998, No. 48, p. 1108
Lachlan Place	50		Timaru	Bylaw 18B – Traffic Speed Limits	2005	19 February 1998, No. 28, p. 629
Lachlan Street	50		Timaru	Bylaw 18B – Traffic Speed Limits	2005	10 September 1998, No. 140, p. 3413
Lancaster Street	50		Geraldine	Bylaw 18B – Traffic Speed Limits	2005	19 February 1998, No. 28, p. 629
Landsborough Road	50	Between points 0m and 120m west of Coonoor Road	Timaru	Bylaw 18B – Traffic Speed Limits	2005	19 February 1998, No. 28, p. 629

<b>Road Name</b>	<b>Speed</b>	<b>Location</b>	<b>Town</b>	<b>Legal Instrument</b>	<b>Date</b>	<b>Previous Legal Instrument</b>
Latter Street	50		Timaru	Bylaw 18B – Traffic Speed Limits	2005	19 February 1998, No. 28, p. 629
Laighton Street	50		Timaru	Bylaw 18B – Traffic Speed Limits	2005	19 February 1998, No. 28, p. 629
Le Cren Street	50		Timaru	Bylaw 18B – Traffic Speed Limits	2005	19 February 1998, No. 28, p. 629
Leckie Street	50		Timaru	Bylaw 18B – Traffic Speed Limits	2005	19 February 1998, No. 28, p. 629
Lennox Street	50		Winchester	Bylaw 18B – Traffic Speed Limits	2005	5 December 2002, No. 176, p. 4423
Leven Street	50		Timaru	Bylaw 18B – Traffic Speed Limits	2005	19 February 1998, No. 28, p. 629
Levens Lane	50		Temuka	Bylaw 18B – Traffic Speed Limits	2005	10 September 1998, No. 140, p. 3413
Lewis Street	50		Geraldine	Bylaw 18B – Traffic Speed Limits	2005	19 February 1998, No. 28, p. 629
Lindsay Street	50		Timaru	Bylaw 18B – Traffic Speed Limits	2005	19 February 1998, No. 28, p. 629
Lindus Street	50		Timaru	Bylaw 18B – Traffic Speed Limits	2005	19 February 1998, No. 28, p. 629
Lisava Avenue	50		Timaru	Bylaw 18B – Traffic Speed Limits	2005	19 February 1998, No. 28, p. 629
Livingstone Street	50		Timaru	Bylaw 18B – Traffic Speed Limits	2005	19 February 1998, No. 28, p. 629
Lough Street	50		Timaru	Bylaw 18B – Traffic Speed Limits	2005	19 February 1998, No. 28, p. 629
Lukeys Lane	50		Timaru	Bylaw 18B – Traffic Speed Limits	2005	19 February 1998, No. 28, p. 629
Luxmoore Road	50		Timaru	Bylaw 18B – Traffic Speed Limits	2005	19 February 1998, No. 28, p. 629
Lyll Terrace	50		Temuka	Bylaw 18B – Traffic Speed Limits	2005	10 September 1998, No. 140, p. 3413
Lysaght Street	50		Timaru	Bylaw 18B – Traffic Speed Limits	2005	19 February 1998, No. 28, p. 629
Macaulay Street	50		Timaru	Bylaw 18B – Traffic Speed Limits	2005	19 February 1998, No. 28, p. 629
MacDonald Street	50	Geraldine	Geraldine	Bylaw 18B – Traffic Speed Limits	2005	19 February 1998, No. 28, p. 629
MacDonald Street	50	Timaru	Timaru	Bylaw 18B – Traffic Speed Limits	2005	19 February 1998, No. 28, p. 629
MacDonald Street	50	Orari	Orari	Bylaw 18B – Traffic Speed Limits	2005	13 July 2000, No. 78, p. 1890
Maddren Street	50		Winchester	Bylaw 18B – Traffic Speed Limits	2005	5 December 2002, No. 176, p. 4423
Mahoneys Hill Road	50		Timaru	Bylaw 18B – Traffic Speed Limits	2005	19 February 1998, No. 28, p. 629
Maitland Street	50		Pleasant Point	Bylaw 18B – Traffic Speed Limits	2005	2 April 1998, No. 48, p. 1108
Majors Road	50		Geraldine	Bylaw 18B – Traffic Speed Limits	2005	19 February 1998, No. 28, p. 629
Maling Street	50		Geraldine	Bylaw 18B – Traffic Speed Limits	2005	19 February 1998, No. 28, p. 629
Maltby Avenue	50		Timaru	Bylaw 18B – Traffic Speed Limits	2005	19 February 1998, No. 28, p. 629
Manse Road	50	between 0m & 110m southwest of SH8	Pleasant Point	Bylaw 18B – Traffic Speed Limits	2005	2 April 1998, No. 48, p. 1108
Maple Crescent	50		Timaru	Bylaw 18B – Traffic Speed Limits	2005	19 February 1998, No. 28, p. 629
Marchviel Street	50		Timaru	Bylaw 18B – Traffic Speed Limits	2005	19 February 1998, No. 28, p. 629
Marine Parade	50		Timaru	Bylaw 18B – Traffic Speed Limits	2005	19 February 1998, No. 28, p. 629
Market Street	50		Timaru	Bylaw 18B – Traffic Speed Limits	2005	19 February 1998, No. 28, p. 629

<b>Road Name</b>	<b>Speed</b>	<b>Location</b>	<b>Town</b>	<b>Legal Instrument</b>	<b>Date</b>	<b>Previous Legal Instrument</b>
Marston Road	50		Timaru	Bylaw 18B – Traffic Speed Limits	2005	19 February 1998, No. 28, p. 629
Martin Street	50		Timaru	Bylaw 18B – Traffic Speed Limits	2005	19 February 1998, No. 28, p. 629
Maryburn Place	50		Timaru	Bylaw 18B – Traffic Speed Limits	2005	19 February 1998, No. 28, p. 629
Maslin Street	50		Geraldine	Bylaw 18B – Traffic Speed Limits	2005	19 February 1998, No. 28, p. 629
Matai Crescent	50		Timaru	Bylaw 18B – Traffic Speed Limits	2005	19 February 1998, No. 28, p. 629
Matal Street	50		Pleasant Point	Bylaw 18B – Traffic Speed Limits	2005	19 February 1998, No. 28, p. 629
Matilda Street	50		Timaru	Bylaw 18B – Traffic Speed Limits	2005	2 April 1998, No. 48, p. 1108
Matipo Street	50		Pleasant Point	Bylaw 18B – Traffic Speed Limits	2005	19 February 1998, No. 28, p. 629
Maude Street	50		Temuka	Bylaw 18B – Traffic Speed Limits	2005	10 September 1998, No. 140, p. 3413
McKechnie Street	50		Geraldine	Bylaw 18B – Traffic Speed Limits	2005	19 February 1998, No. 28, p. 629
McKenzie Street	50	between 100m east of Tancred Street and Waihi Terrace	Geraldine	Bylaw 18B – Traffic Speed Limits	2005	19 February 1998, No. 28, p. 629
McNair Road	50	between 0m & 150m north of Richard Pearse Drive	Temuka	Bylaw 18B – Traffic Speed Limits	2005	10 September 1998, No. 140, p. 3413
Melrose Street	50		Timaru	Bylaw 18B – Traffic Speed Limits	2005	19 February 1998, No. 28, p. 629
Melton Street	50		Timaru	Bylaw 18B – Traffic Speed Limits	2005	19 February 1998, No. 28, p. 629
Memorial Avenue	50		Timaru	Bylaw 18B – Traffic Speed Limits	2005	19 February 1998, No. 28, p. 629
Meremere Street	50		Timaru	Bylaw 18B – Traffic Speed Limits	2005	19 February 1998, No. 28, p. 629
Milford Clandeboye Road	50	between 0m & 50m east of Murray Street	Temuka	Bylaw 18B – Traffic Speed Limits	2005	10 September 1998, No. 140, p. 3413
Mill Street	50		Timaru	Bylaw 18B – Traffic Speed Limits	2005	19 February 1998, No. 28, p. 629
Miro Street	50		Timaru	Bylaw 18B – Traffic Speed Limits	2005	19 February 1998, No. 28, p. 629
Miro Street	50	Pleasant Point	Pleasant Point	Bylaw 18B – Traffic Speed Limits	2005	2 April 1998, No. 48, p. 1108
Monowai Place	50		Timaru	Bylaw 18B – Traffic Speed Limits	2005	19 February 1998, No. 28, p. 629
Moore Street	50		Timaru	Bylaw 18B – Traffic Speed Limits	2005	19 February 1998, No. 28, p. 629
Morgans Road	50		Timaru	Bylaw 18B – Traffic Speed Limits	2005	19 February 1998, No. 28, p. 629
Mountain View Road	50		Timaru	Bylaw 18B – Traffic Speed Limits	2005	19 February 1998, No. 28, p. 629
Mowbray Street	50		Timaru	Bylaw 18B – Traffic Speed Limits	2005	19 February 1998, No. 28, p. 629
Munro Street	50		Pleasant Point	Bylaw 18B – Traffic Speed Limits	2005	19 February 1998, No. 28, p. 629
Murchison Drive	50		Timaru	Bylaw 18B – Traffic Speed Limits	2005	2 April 1998, No. 48, p. 1108
Murray Street	50		Temuka	Bylaw 18B – Traffic Speed Limits	2005	19 February 1998, No. 28, p. 629
						10 September 1998, No. 140, p. 3413
Napier Street	50		Timaru	Bylaw 18B – Traffic Speed Limits	2005	19 February 1998, No. 28, p. 629
Neal Street	50		Temuka	Bylaw 18B – Traffic Speed Limits	2005	10 September 1998, No. 140, p. 3413
Nelson Terrace	50		Timaru	Bylaw 18B – Traffic Speed Limits	2005	19 February 1998, No. 28, p. 629

<b>Road Name</b>	<b>Speed</b>	<b>Location</b>	<b>Town</b>	<b>Legal Instrument</b>	<b>Date</b>	<b>Previous Legal Instrument</b>
Newman Street	50		Timaru	Bylaw 18B – Traffic Speed Limits	2005	19 February 1998, No. 28, p. 629
Newton Street	50		Timaru	Bylaw 18B – Traffic Speed Limits	2005	19 February 1998, No. 28, p. 629
Nikau Place	50		Timaru	Bylaw 18B – Traffic Speed Limits	2005	19 February 1998, No. 28, p. 629
Nikau Street	50		Pleasant Point	Bylaw 18B – Traffic Speed Limits	2005	2 April 1998, No. 48, p. 1108
Nile Street	50		Timaru	Bylaw 18B – Traffic Speed Limits	2005	19 February 1998, No. 28, p. 629
North Street	50	Timaru	Timaru	Bylaw 18B – Traffic Speed Limits	2005	19 February 1998, No. 28, p. 629
North Street	50	Winchester	Winchester	Bylaw 18B – Traffic Speed Limits	2005	19 February 1998, No. 28, p. 629
North Terrace	50		Temuka	Bylaw 18B – Traffic Speed Limits	2005	10 September 1998, No. 140, p. 3413
North Terrace Road	50	Geraldine	Geraldine	Bylaw 18B – Traffic Speed Limits	2005	19 February 1998, No. 28, p. 629
Norwood Street	50		Timaru	Bylaw 18B – Traffic Speed Limits	2005	19 February 1998, No. 28, p. 629
Oak Place	50		Timaru	Bylaw 18B – Traffic Speed Limits	2005	19 February 1998, No. 28, p. 629
Oak Street	50	between 950m & 1388m north of Hawke Road	Orari	Bylaw 18B – Traffic Speed Limits	2005	13 July 2000, No. 78, p. 1890
Ohau Street	50		Timaru	Bylaw 18B – Traffic Speed Limits	2005	19 February 1998, No. 28, p. 629
Old North Road	50	between 1895m & 2626m southwest of SH1	Timaru	Bylaw 18B – Traffic Speed Limits	2005	19 February 1998, No. 28, p. 629
Onslow Street	50		Timaru	Bylaw 18B – Traffic Speed Limits	2005	19 February 1998, No. 28, p. 629
Orari Station Road	50	between 6275m & 6375m west of SH1	Timaru	Bylaw 18B – Traffic Speed Limits	2005	19 February 1998, No. 28, p. 629
Orbell Street	50		Timaru	Bylaw 18B – Traffic Speed Limits	2005	19 February 1998, No. 28, p. 629
Orielton Place	50		Timaru	Bylaw 18B – Traffic Speed Limits	2005	19 February 1998, No. 28, p. 629
Ormsby Street	50		Temuka	Bylaw 18B – Traffic Speed Limits	2005	10 September 1998, No. 140, p. 3413
Ormsby Street North	50		Temuka	Bylaw 18B – Traffic Speed Limits	2005	10 September 1998, No. 140, p. 3413
Otipua Road	50		Timaru	Bylaw 18B – Traffic Speed Limits	2005	19 February 1998, No. 28, p. 629
Owen Street	50		Temuka	Bylaw 18B – Traffic Speed Limits	2005	10 September 1998, No. 140, p. 3413
Oxford Street	50		Timaru	Bylaw 18B – Traffic Speed Limits	2005	19 February 1998, No. 28, p. 629
Pacific Street	50		Timaru	Bylaw 18B – Traffic Speed Limits	2005	19 February 1998, No. 28, p. 629
Pages Road	50	between 0m & 1977m west of Selwyn Street	Timaru	Bylaw 18B – Traffic Speed Limits	2005	19 February 1998, No. 28, p. 629
Paignton Street	50		Timaru	Bylaw 18B – Traffic Speed Limits	2005	19 February 1998, No. 28, p. 629
Pareora Avenue	50	between 20m & 1625m east of SH1	Timaru	Bylaw 18B – Traffic Speed Limits	2005	19 February 1998, No. 28, p. 629
Park Lane	50		Timaru	Bylaw 18B – Traffic Speed Limits	2005	19 February 1998, No. 28, p. 629
Park View Terrace	50		Timaru	Bylaw 18B – Traffic Speed Limits	2005	19 February 1998, No. 28, p. 629
Peel Street	50	Geraldine	Geraldine	Bylaw 18B – Traffic Speed Limits	2005	19 February 1998, No. 28, p. 629

<b>Road Name</b>	<b>Speed</b>	<b>Location</b>	<b>Town</b>	<b>Legal Instrument</b>	<b>Date</b>	<b>Previous Legal Instrument</b>
Perth Street	50		Timaru	Bylaw 18B – Traffic Speed Limits	2005	19 February 1998, No. 28, p. 629
Philip Street	50		Cave	Bylaw 18B – Traffic Speed Limits	2005	13 July 2000, No. 78, p. 1890
Pine Street	50		Geraldine	Bylaw 18B – Traffic Speed Limits	2005	19 February 1998, No. 28, p. 629
Poplar Street	50		Timaru	Bylaw 18B – Traffic Speed Limits	2005	19 February 1998, No. 28, p. 629
Port Loop Road	50	between Marine Parade and 50m west of Hayes Street	Timaru	Bylaw 18B – Traffic Speed Limits	2005	19 February 1998, No. 28, p. 629
Preston Street	50		Timaru	Bylaw 18B – Traffic Speed Limits	2005	19 February 1998, No. 28, p. 629
Princes Street	50	Temuka	Temuka	Bylaw 18B – Traffic Speed Limits	2005	10 September 1998, No. 140, p. 3413
Princes Street	50	Timaru	Timaru	Bylaw 18B – Traffic Speed Limits	2005	19 February 1998, No. 28, p. 629
Pringle Street	50		Timaru	Bylaw 18B – Traffic Speed Limits	2005	19 February 1998, No. 28, p. 629
Pukaki Street	50		Timaru	Bylaw 18B – Traffic Speed Limits	2005	19 February 1998, No. 28, p. 629
Pukatea Street	50		Timaru	Bylaw 18B – Traffic Speed Limits	2005	19 February 1998, No. 28, p. 629
Puriri Street	50		Timaru	Bylaw 18B – Traffic Speed Limits	2005	19 February 1998, No. 28, p. 629
Pye Road	50	between 0m & 1118m east of Davies Street		Bylaw 18B – Traffic Speed Limits	2005	19 February 1998, No. 28, p. 629
Quarry Road	50	between 0m & 340m west of Otipua Road	Timaru	Bylaw 18B – Traffic Speed Limits	2005	19 February 1998, No. 28, p. 629
Queen Street	50	Pareora		Bylaw 18B – Traffic Speed Limits	2005	
Queen Street	50	Timaru	Timaru	Bylaw 18B – Traffic Speed Limits	2005	19 February 1998, No. 28, p. 629
Randwick Place	50		Timaru	Bylaw 18B – Traffic Speed Limits	2005	19 February 1998, No. 28, p. 629
Ranfury Street	50		Timaru	Bylaw 18B – Traffic Speed Limits	2005	19 February 1998, No. 28, p. 629
Ranui Avenue	50		Timaru	Bylaw 18B – Traffic Speed Limits	2005	19 February 1998, No. 28, p. 629
Rata Place	50		Timaru	Bylaw 18B – Traffic Speed Limits	2005	19 February 1998, No. 28, p. 629
Rata Street	50		Pleasant Point	Bylaw 18B – Traffic Speed Limits	2005	
Rathmore Street	50		Timaru	Bylaw 18B – Traffic Speed Limits	2005	19 February 1998, No. 28, p. 629
Rawhiti Street	50		Temuka	Bylaw 18B – Traffic Speed Limits	2005	10 September 1998, No. 140, p. 3413
Raymond Street	50		Timaru	Bylaw 18B – Traffic Speed Limits	2005	19 February 1998, No. 28, p. 629
Rayner Street	50	Temuka	Temuka	Bylaw 18B – Traffic Speed Limits	2005	10 September 1998, No. 140, p. 3413
Rayner Street	50	Pleasant Point	Pleasant Point	Bylaw 18B – Traffic Speed Limits	2005	2 April 1998, No. 48, p. 1108
Rayner Street North	50		Temuka	Bylaw 18B – Traffic Speed Limits	2005	10 September 1998, No. 140, p. 3413
Rayner Street South	50		Temuka	Bylaw 18B – Traffic Speed Limits	2005	10 September 1998, No. 140, p. 3413
Redruth Street	50		Timaru	Bylaw 18B – Traffic Speed Limits	2005	19 February 1998, No. 28, p. 629
Redwood Street	50		Temuka	Bylaw 18B – Traffic Speed Limits	2005	10 September 1998, No. 140, p. 3413

<b>Road Name</b>	<b>Speed</b>	<b>Location</b>	<b>Town</b>	<b>Legal Instrument</b>	<b>Date</b>	<b>Previous Legal Instrument</b>
Regent Street	50		Timaru	Bylaw 18B – Traffic Speed Limits	2005	3413
Rhodes Street	50	Pareora		Bylaw 18B – Traffic Speed Limits	2005	19 February 1998, No. 28, p. 629
Rhodes Street	50	Timaru	Timaru	Bylaw 18B – Traffic Speed Limits	2005	19 February 1998, No. 28, p. 629
Richard Pearse Drive	50	between 596m and 1882m west of Murray Street	Temuka	Bylaw 18B – Traffic Speed Limits	2005	10 September 1998, No. 140, p. 3413
Richard Street	50		Winchester	Bylaw 18B – Traffic Speed Limits	2005	5 December 2002, No. 176, p. 4423
Richards Place	50		Timaru	Bylaw 18B – Traffic Speed Limits	2005	19 February 1998, No. 28, p. 629
Richmond Street	50		Timaru	Bylaw 18B – Traffic Speed Limits	2005	19 February 1998, No. 28, p. 629
Rimu Street	50	Timaru	Timaru	Bylaw 18B – Traffic Speed Limits	2005	19 February 1998, No. 28, p. 629
Rimu Street	50	Pleasant Point	Pleasant Point	Bylaw 18B – Traffic Speed Limits	2005	2 April 1998, No. 48, p. 1108
Rise Road	50	between 0m & 245m southeast of SH1	Winchester	Bylaw 18B – Traffic Speed Limits	2005	5 December 2002, No. 176, p. 4423
Ritchie Street	50		Timaru	Bylaw 18B – Traffic Speed Limits	2005	19 February 1998, No. 28, p. 629
River Street	50			Bylaw 18B – Traffic Speed Limits	2005	
Rolleston Street	50		Timaru	Bylaw 18B – Traffic Speed Limits	2005	19 February 1998, No. 28, p. 629
Ronald Street	50		Winchester	Bylaw 18B – Traffic Speed Limits	2005	5 December 2002, No. 176, p. 4423
Rose Street	50		Timaru	Bylaw 18B – Traffic Speed Limits	2005	19 February 1998, No. 28, p. 629
Roslyn Terrace	50		Timaru	Bylaw 18B – Traffic Speed Limits	2005	19 February 1998, No. 28, p. 629
Rothwell Street	50		Timaru	Bylaw 18B – Traffic Speed Limits	2005	19 February 1998, No. 28, p. 629
Rowan Place	50		Timaru	Bylaw 18B – Traffic Speed Limits	2005	19 February 1998, No. 28, p. 629
Roxburgh Street	50		Timaru	Bylaw 18B – Traffic Speed Limits	2005	19 February 1998, No. 28, p. 629
Royal Street	50		Timaru	Bylaw 18B – Traffic Speed Limits	2005	19 February 1998, No. 28, p. 629
Rugby Street	50		Timaru	Bylaw 18B – Traffic Speed Limits	2005	19 February 1998, No. 28, p. 629
Runa Terrace	50		Timaru	Bylaw 18B – Traffic Speed Limits	2005	19 February 1998, No. 28, p. 629
Russell Square	50		Pleasant Point	Bylaw 18B – Traffic Speed Limits	2005	2 April 1998, No. 48, p. 1108
Russell Street	50		Timaru	Bylaw 18B – Traffic Speed Limits	2005	19 February 1998, No. 28, p. 629
Sarah Street	50		Pleasant Point	Bylaw 18B – Traffic Speed Limits	2005	2 April 1998, No. 48, p. 1108
Sawdon Place	50		Timaru	Bylaw 18B – Traffic Speed Limits	2005	19 February 1998, No. 28, p. 629
Scott Terrace	50		Temuka	Bylaw 18B – Traffic Speed Limits	2005	19 February 1998, No. 28, p. 629
Sealy Street	50	Temuka	Temuka	Bylaw 18B – Traffic Speed Limits	2005	10 September 1998, No. 140, p. 3413
Sealy Street	50	Timaru	Timaru	Bylaw 18B – Traffic Speed Limits	2005	19 February 1998, No. 28, p. 629
Seaview Terrace	50		Timaru	Bylaw 18B – Traffic Speed Limits	2005	19 February 1998, No. 28, p. 629

<b>Road Name</b>	<b>Speed</b>	<b>Location</b>	<b>Town</b>	<b>Legal Instrument</b>	<b>Date</b>	<b>Previous Legal Instrument</b>
Seddon Street	50	Temuka	Timaru	Bylaw 18B – Traffic Speed Limits	2005	19 February 1998, No. 28, p. 629
Seddon Street	50	Timaru	Temuka	Bylaw 18B – Traffic Speed Limits	2005	10 September 1998, No. 140, p.3413
Sefton Street East	50		Timaru	Bylaw 18B – Traffic Speed Limits	2005	19 February 1998, No. 28, p. 629
Selwyn Street	50		Timaru	Bylaw 18B – Traffic Speed Limits	2005	19 February 1998, No. 28, p. 629
Shaw Street	50	Timaru	Timaru	Bylaw 18B – Traffic Speed Limits	2005	19 February 1998, No. 28, p. 629
Shaw Street	50	Geraldine	Geraldine	Bylaw 18B – Traffic Speed Limits	2005	19 February 1998, No. 28, p. 629
Shaw Street	50	Temuka	Temuka	Bylaw 18B – Traffic Speed Limits	2005	10 September 1998, No. 140, p. 3413
Sheffield Street	50		Timaru	Bylaw 18B – Traffic Speed Limits	2005	19 February 1998, No. 28, p. 629
Shere Street	50		Pleasant Point	Bylaw 18B – Traffic Speed Limits	2005	2 April 1998, No. 48, p. 1108
Sherratt Street	50		Timaru	Bylaw 18B – Traffic Speed Limits	2005	19 February 1998, No. 28, p. 629
Short Street	50		Timaru	Bylaw 18B – Traffic Speed Limits	2005	19 February 1998, No. 28, p. 629
Simmons Street	50		Timaru	Bylaw 18B – Traffic Speed Limits	2005	19 February 1998, No. 28, p. 629
Snowdon Road	50		Timaru	Bylaw 18B – Traffic Speed Limits	2005	19 February 1998, No. 28, p. 629
Somerset Street	50		Timaru	Bylaw 18B – Traffic Speed Limits	2005	19 February 1998, No. 28, p. 629
Sophia Street	50	between 140m & 550m north of George Street	Timaru	Bylaw 18B – Traffic Speed Limits	2005	19 February 1998, No. 28, p. 629
South Street	50		Timaru	Bylaw 18B – Traffic Speed Limits	2005	19 February 1998, No. 28, p. 629
South Terrace	50		Geraldine	Bylaw 18B – Traffic Speed Limits	2005	19 February 1998, No. 28, p. 629
Spring Road	50		Timaru	Bylaw 18B – Traffic Speed Limits	2005	19 February 1998, No. 28, p. 629
St Andrew Street	50		Geraldine	Bylaw 18B – Traffic Speed Limits	2005	19 February 1998, No. 28, p. 629
St George Street	50		Timaru	Bylaw 18B – Traffic Speed Limits	2005	19 February 1998, No. 28, p. 629
St Johns Avenue	50		Timaru	Bylaw 18B – Traffic Speed Limits	2005	19 February 1998, No. 28, p. 629
St Leonards Road	50		Temuka	Bylaw 18B – Traffic Speed Limits	2005	10 September 1998, No. 140, p. 3413
Stafford Street	50		Timaru	Bylaw 18B – Traffic Speed Limits	2005	19 February 1998, No. 28, p. 629
Station Street	50		Timaru	Bylaw 18B – Traffic Speed Limits	2005	19 February 1998, No. 28, p. 629
Stirling Place	50		Timaru	Bylaw 18B – Traffic Speed Limits	2005	19 February 1998, No. 28, p. 629
Strathallan Street	50		Timaru	Bylaw 18B – Traffic Speed Limits	2005	19 February 1998, No. 28, p. 629
Stratheona Road	50	between 0m & 350m north of Halstead Road	Pleasant Point	Bylaw 18B – Traffic Speed Limits	2005	19 February 1998, No. 28, p. 629
Stuart Street	50		Timaru	Bylaw 18B – Traffic Speed Limits	2005	19 February 1998, No. 28, p. 629
Studholme Street	50		Temuka	Bylaw 18B – Traffic Speed Limits	2005	10 September 1998, No. 140, p. 3413
Sutter Street	50		Timaru	Bylaw 18B – Traffic Speed Limits	2005	19 February 1998, No. 28, p. 629
Talbot Street	50	between Cox Street and 250m south of	Geraldine	Bylaw 18B – Traffic Speed Limits	2005	19 February 1998, No. 28, p. 629

<b>Road Name</b>	<b>Speed</b>	<b>Location</b>	<b>Town</b>	<b>Legal Instrument</b>	<b>Date</b>	<b>Previous Legal Instrument</b>
Talbot Street	50	Cole St Timaru	Timaru	Bylaw 18B – Traffic Speed Limits	2005	19 February 1998, No. 28, p. 629
Tancred Street	50			Bylaw 18B – Traffic Speed Limits	2005	
Tasman Street	50		Timaru	Bylaw 18B – Traffic Speed Limits	2005	19 February 1998, No. 28, p. 629
Tawa Street	50		Timaru	Bylaw 18B – Traffic Speed Limits	2005	19 February 1998, No. 28, p. 629
Tay Street	50		Timaru	Bylaw 18B – Traffic Speed Limits	2005	19 February 1998, No. 28, p. 629
Taylor Street	50	Timaru		Bylaw 18B – Traffic Speed Limits	2005	19 February 1998, No. 28, p. 629
Taylor Street	50	Geraldine	Geraldine	Bylaw 18B – Traffic Speed Limits	2005	19 February 1998, No. 28, p. 629
Te Weka Street	50		Timaru	Bylaw 18B – Traffic Speed Limits	2005	19 February 1998, No. 28, p. 629
Tekapo Street	50		Timaru	Bylaw 18B – Traffic Speed Limits	2005	19 February 1998, No. 28, p. 629
Temple Crescent	50		Timaru	Bylaw 18B – Traffic Speed Limits	2005	19 February 1998, No. 28, p. 629
Templer Street	50	Between 0m and 220m east of SH79 between 90m north of Erskine Street and 210m		Bylaw 18B – Traffic Speed Limits	2005	19 February 1998, No. 28, p. 629
Temuka - Orari Hway	50		Winchester	Bylaw 18B – Traffic Speed Limits	2005	5 December 2002, No. 176, p. 4423
Tengawai Road	50	between 0m & 765m north of SH8	Pleasant Point	Bylaw 18B – Traffic Speed Limits	2005	2 April 1998, No. 48, p. 1108
The Bay Hill	50		Timaru	Bylaw 18B – Traffic Speed Limits	2005	19 February 1998, No. 28, p. 629
The Terrace	50		Timaru	Bylaw 18B – Traffic Speed Limits	2005	19 February 1998, No. 28, p. 629
Theodosia Street	50		Timaru	Bylaw 18B – Traffic Speed Limits	2005	19 February 1998, No. 28, p. 629
Thomas Street	50	Temuka	Temuka	Bylaw 18B – Traffic Speed Limits	2005	10 September 1998, No. 28, p. 629 3413
Thomas Street	50	Timaru	Timaru	Bylaw 18B – Traffic Speed Limits	2005	19 February 1998, No. 28, p. 629
Totara Place	50		Timaru	Bylaw 18B – Traffic Speed Limits	2005	19 February 1998, No. 28, p. 629
Totara Street	50	Geraldine	Geraldine	Bylaw 18B – Traffic Speed Limits	2005	19 February 1998, No. 28, p. 629
Totara Street	50	Pleasant Point	Pleasant Point	Bylaw 18B – Traffic Speed Limits	2005	2 April 1998, No. 48, p. 1108
Trafalgar Street	50		Timaru	Bylaw 18B – Traffic Speed Limits	2005	19 February 1998, No. 28, p. 629
Treneglos Street	50		Timaru	Bylaw 18B – Traffic Speed Limits	2005	19 February 1998, No. 28, p. 629
Tripp Street	50	Geraldine	Geraldine	Bylaw 18B – Traffic Speed Limits	2005	19 February 1998, No. 28, p. 629
Turnbull Street	50	Pareora	Pareora	Bylaw 18B – Traffic Speed Limits	2005	15 September 1988, No. 28, p. 629 3656
Turnbull Street	50	Timaru	Timaru	Bylaw 18B – Traffic Speed Limits	2005	19 February 1998, No. 28, p. 629
Tweedy Street	50		Timaru	Bylaw 18B – Traffic Speed Limits	2005	19 February 1998, No. 28, p. 629
Tyne Street	50		Timaru	Bylaw 18B – Traffic Speed Limits	2005	19 February 1998, No. 28, p. 629
Unwin Road	50		Timaru	Bylaw 18B – Traffic Speed Limits	2005	19 February 1998, No. 28, p. 629
Usk Street	50		Timaru	Bylaw 18B – Traffic Speed Limits	2005	19 February 1998, No. 28, p. 629
Vernon Street	50		Winchester	Bylaw 18B – Traffic Speed Limits	2005	5 December 2002, No. 176, p. 4423

Road Name	Speed	Location	Town	Legal Instrument	Date	Previous Legal Instrument
Victoria Street	50		Timaru	Bylaw 18B – Traffic Speed Limits	2005	19 February 1998, No. 28, p. 629
Vinnell Street	50		Timaru	Bylaw 18B – Traffic Speed Limits	2005	19 February 1998, No. 28, p. 629
Virtue Avenue	50		Timaru	Bylaw 18B – Traffic Speed Limits	2005	19 February 1998, No. 28, p. 629
Waihi Place	50		Geraldine	Bylaw 18B – Traffic Speed Limits	2005	19 February 1998, No. 28, p. 629
Wai-iti Road	50		Timaru	Bylaw 18B – Traffic Speed Limits	2005	19 February 1998, No. 28, p. 629
Waimataitai Street	50		Timaru	Bylaw 18B – Traffic Speed Limits	2005	19 February 1998, No. 28, p. 629
Waipopo Road	50	between 4410m and 5460m north east of Seadown	Waipopo	Bylaw 18B – Traffic Speed Limits	2005	8 August 1998, No. 107, p. 2635
Waipori Place	50		Timaru	Bylaw 18B – Traffic Speed Limits	2005	19 February 1998, No. 28, p. 629
Waitaki Street	50		Timaru	Bylaw 18B – Traffic Speed Limits	2005	19 February 1998, No. 28, p. 629
Waitohi Temuka Road	50	between 0m & 200m west of SH1	Temuka	Bylaw 18B – Traffic Speed Limits	2005	10 September 1998, No. 140, p. 3413
Waitui Drive	50		Timaru	Bylaw 18B – Traffic Speed Limits	2005	19 February 1998, No. 28, p. 629
Wallace Street	50		Timaru	Bylaw 18B – Traffic Speed Limits	2005	19 February 1998, No. 28, p. 629
Wallingford Road	50		Timaru	Bylaw 18B – Traffic Speed Limits	2005	19 February 1998, No. 28, p. 629
Watlington Place	50		Timaru	Bylaw 18B – Traffic Speed Limits	2005	19 February 1998, No. 28, p. 629
Wellington Street	50		Timaru	Bylaw 18B – Traffic Speed Limits	2005	19 February 1998, No. 28, p. 629
Westcott Street	50		Timaru	Bylaw 18B – Traffic Speed Limits	2005	19 February 1998, No. 28, p. 629
Whitcombe Street	50		Temuka	Bylaw 18B – Traffic Speed Limits	2005	10 September 1998, No. 140, p. 3413
White Street	50		Timaru	Bylaw 18B – Traffic Speed Limits	2005	19 February 1998, No. 28, p. 629
Wilkin Street	50		Temuka	Bylaw 18B – Traffic Speed Limits	2005	10 September 1998, No. 140, p. 3413
William Street	50	Timaru	Timaru	Bylaw 18B – Traffic Speed Limits	2005	19 February 1998, No. 28, p. 629
William Street East	50	Timaru	Timaru	Bylaw 18B – Traffic Speed Limits	2005	19 February 1998, No. 28, p. 629
Williamson Place	50		Geraldine	Bylaw 18B – Traffic Speed Limits	2005	19 February 1998, No. 28, p. 629
Willow Place	50		Timaru	Bylaw 18B – Traffic Speed Limits	2005	19 February 1998, No. 28, p. 629
Wilmshurst Road	50		Temuka	Bylaw 18B – Traffic Speed Limits	2005	10 September 1998, No. 140, p. 3413
Wilson Street	50		Timaru	Bylaw 18B – Traffic Speed Limits	2005	19 February 1998, No. 28, p. 629
Wilson Street	50		Geraldine	Bylaw 18B – Traffic Speed Limits	2005	19 February 1998, No. 28, p. 629
Winchester-Geraldine Road	50	between 0m & 360m north of SH1	Winchester	Bylaw 18B – Traffic Speed Limits	2005	5 December 2002, No. 176, p. 4423
Windsor Street	50		Timaru	Bylaw 18B – Traffic Speed Limits	2005	19 February 1998, No. 28, p. 629
Wood Street	50		Temuka	Bylaw 18B – Traffic Speed Limits	2005	10 September 1998, No. 140, p. 3413
Woodlands Road	50		Timaru	Bylaw 18B – Traffic Speed Limits	2005	19 February 1998, No. 28, p. 629

<b>Road Name</b>	<b>Speed</b>	<b>Location</b>	<b>Town</b>	<b>Legal Instrument</b>	<b>Date</b>	<b>Previous Legal Instrument</b>
Woolcombe Street	50		Timaru	Bylaw 18B – Traffic Speed Limits	2005	19 February 1998, No. 28, p. 629
Wright Street	50		Geraldine	Bylaw 18B – Traffic Speed Limits	2005	19 February 1998, No. 28, p. 629
Wrights Avenue	50		Timaru	Bylaw 18B – Traffic Speed Limits	2005	19 February 1998, No. 28, p. 629
York Street	50		Timaru	Bylaw 18B – Traffic Speed Limits	2005	19 February 1998, No. 28, p. 629
Blair Street	60		Timaru	Bylaw 18B – Traffic Speed Limits	2005	19 February 1998, No. 28, p. 629
Meadows Road	60	between 0m & 1241m north of SH1	Timaru	Bylaw 18B – Traffic Speed Limits	2005	19 February 1998, No. 28, p. 629
Old North Road	60	between 0m & 400m southwest of SH1	Timaru	Bylaw 18B – Traffic Speed Limits	2005	19 February 1998, No. 28, p. 629
Seadown Road	60	between 0m & 455m north of SH1	Timaru	Bylaw 18B – Traffic Speed Limits	2005	19 February 1998, No. 28, p. 629
Washdyke Flat Road	60	between 0m & 540m west of SH1	Timaru	Bylaw 18B – Traffic Speed Limits	2005	19 February 1998, No. 28, p. 629
Burdon Road	70	between 0m & 285m northeast of Woodbury Road	Timaru	Bylaw 18B – Traffic Speed Limits	2005	19 February 1998, No. 28, p. 629
Canal Road	70	between 0m & 260m west of Rolleston Road	Clandeboye	Bylaw 18B – Traffic Speed Limits	2005	6 August 1998, No. 107, p. 2635
Church Street	70	Woodbury		Bylaw 18B – Traffic Speed Limits	2005	
Dennistoun Road	70	between 0m & 660m west of east end		Bylaw 18B – Traffic Speed Limits	2005	
Downs Road	70	between 70m & 2916m west of Hewling Street		Bylaw 18B – Traffic Speed Limits	2005	
Gladstone Street North	70	between 0m & 20m south of Orari Station Road	Orari	Bylaw 18B – Traffic Speed Limits	2005	
High Street	70	Woodbury		Bylaw 18B – Traffic Speed Limits	2005	
Kennedy Street	70	between 240m & 660m west of Talbot Street	Geraldine	Bylaw 18B – Traffic Speed Limits	2005	19 February 1998, No. 28, p. 629
King Street	70	between 2252m & 2721m north of SH1(south)		Bylaw 18B – Traffic Speed Limits	2005	
Kotuku Place	70	between 0m & 150m southwest of Woodbury Road	Clandeboye	Bylaw 18B – Traffic Speed Limits	2005	6 August 1998, No. 107, p. 2635
McKeown Road	70	between 10424m & 10764m east of Murray Street	Clandeboye	Bylaw 18B – Traffic Speed Limits	2005	6 August 1998, No. 107, p. 2635
Milford - Clandeboye Road	70	between 0m & 50m east of Murray Street		Bylaw 18B – Traffic Speed Limits	2005	
North Town Belt	70	between 0m & 660m west of SH1	Orari	Bylaw 18B – Traffic Speed Limits	2005	13 July 2000, No. 78, p. 1890
Orari Station Road	70	between 11283m & 13183m north of Geraldine Arundel Road	Peel Forest	Bylaw 18B – Traffic Speed Limits	2005	27 November 1986, No. 189, page
Pye Road	70	between 1118m & 1168m east of Davies Street		Bylaw 18B – Traffic Speed Limits	2005	
Rangitata Gorge Road	70	between 0m & 1750m north of Blandswood Road		Bylaw 18B – Traffic Speed Limits	2005	

<b>Road Name</b>	<b>Speed</b>	<b>Location</b>	<b>Town</b>	<b>Legal Instrument</b>	<b>Date</b>	<b>Previous Legal Instrument</b>
Richard Pearse Drive	70	between 0m & 596m west of Murray Street		Bylaw 18B – Traffic Speed Limits	2005	
Rolleston Road	70	between 0m & 380m north of Canal Road	Clandeboyne	Bylaw 18B – Traffic Speed Limits	2005	6 August 1998, No. 107, p. 2635
Woodbury Road	70	between 5539m and 6169m southwest of SH79	Woodbury	Bylaw 18B – Traffic Speed Limits	2005	15 September 1988, No. 157, p. 3656
Barton Road	80			Bylaw 18B – Traffic Speed Limits	2005	
Beaconsfield Road	80	between 20m & 1485m west of SH1		Bylaw 18B – Traffic Speed Limits	2005	
Beaconsfield Road	80	between 160m east of Clay Road and 260m west of Brasell Road		Bylaw 18B – Traffic Speed Limits	2005	
Bennett Road	80	between 0m & 200m east of SH79		Bylaw 18B – Traffic Speed Limits	2005	
Brasell Road	80	between 0m and 60m south of Beaconsfield Road		Bylaw 18B – Traffic Speed Limits	2005	
Bristol Road	80	Between 0m and 60m east of Beaconsfield Road		Bylaw 18B – Traffic Speed Limits	2005	
Brookfield Road	80			Bylaw 18B – Traffic Speed Limits	2005	
Claremont Road	80	between 323m & 1543m west of Gleniti Road		Bylaw 18B – Traffic Speed Limits B – Traffic Speed Limits	2005	
Clay Road	80	between 0m and 40m south of Beaconsfield Road		Bylaw 18B – Traffic Speed Limits	2005	
Fairview Road	80	between 360m & 4812m southwest of Landsborough		Bylaw 18B – Traffic Speed Limits	2005	
Gleniti Road	80	between 1135m & 3678m north of Wai-iti Road	Timaru	Bylaw 18B – Traffic Speed Limits	2005	19 February 1998, No. 28, p. 629 (urban section only)
Greenvale Road	80			Bylaw 18B – Traffic Speed Limits	2005	
Hopkinson Road	80			Bylaw 18B – Traffic Speed Limits	2005	
Kellands Hill Road	80	between 60m & 1080m north of Pages Road	Timaru	Bylaw 18B – Traffic Speed Limits	2005	19 February 1998, No. 28, p. 629
Landsborough Road	80	Between points 120m west of Coonoor Road and 60m west of Barton Road	Timaru	Bylaw 18B – Traffic Speed Limits	2005	
Oakwood Road	80			Bylaw 18B – Traffic Speed Limits	2005	
Old North Road	80	between 400m & 1895m southwest of SH1	Timaru	Bylaw 18B – Traffic Speed Limits	2005	19 February 1998, No. 28, p. 629
Pages Road	80	between 1977m & 4314m west of Selwyn Street	Timaru	Bylaw 18B – Traffic Speed Limits	2005	19 February 1998, No. 28, p. 629
Rockdale Road	80			Bylaw 18B – Traffic Speed Limits	2005	
Woodbury Road	80	between 0m & 200m west of SH79		Bylaw 18B – Traffic Speed Limits	2005	
Ackroyd Road	100			Bylaw 18B – Traffic Speed Limits	2005	

<b>Road Name</b>	<b>Speed</b>	<b>Location</b>	<b>Town</b>	<b>Legal Instrument</b>	<b>Date</b>	<b>Previous Legal Instrument</b>
Acland Street	100			Bylaw 18B – Traffic Speed Limits	2005	
Adair Road	100			Bylaw 18B – Traffic Speed Limits	2005	
Adair Settlement Road	100			Bylaw 18B – Traffic Speed Limits	2005	
Agnew Road	100			Bylaw 18B – Traffic Speed Limits	2005	
Airey Road	100			Bylaw 18B – Traffic Speed Limits	2005	
Aker Road	100			Bylaw 18B – Traffic Speed Limits	2005	
Ambler Road	100			Bylaw 18B – Traffic Speed Limits	2005	
Aorangi Road	100			Bylaw 18B – Traffic Speed Limits	2005	
Armstrongs Zig Zag Road	100			Bylaw 18B – Traffic Speed Limits	2005	
Arowhenua Road	100			Bylaw 18B – Traffic Speed Limits	2005	
Arowhenua Station Road	100			Bylaw 18B – Traffic Speed Limits	2005	
Arowhenua Street	100			Bylaw 18B – Traffic Speed Limits	2005	
Arundel Belfield Road	100			Bylaw 18B – Traffic Speed Limits	2005	
Arundel Rangitata Road	100			Bylaw 18B – Traffic Speed Limits	2005	
Badham Road	100			Bylaw 18B – Traffic Speed Limits	2005	
Bain Road	100			Bylaw 18B – Traffic Speed Limits	2005	
Balfour Road	100			Bylaw 18B – Traffic Speed Limits	2005	
Barker Road	100			Bylaw 18B – Traffic Speed Limits	2005	
Bassett Road	100			Bylaw 18B – Traffic Speed Limits	2005	
Bates Street	100		Orari	Bylaw 18B – Traffic Speed Limits	2005	
Beach Road	100			Bylaw 18B – Traffic Speed Limits	2005	
Beaconsfield Flat Road	100	between 70m west of Bath Street and Holme Station Road		Bylaw 18B – Traffic Speed Limits	2005	
Beaconsfield Road	100	between 1485m west of SH1 & 160m east of Clay Road		Bylaw 18B – Traffic Speed Limits	2005	
Beaconsfield Road	100	between 260m and 6317m west of Brassell Road		Bylaw 18B – Traffic Speed Limits	2005	
Beck Road	100			Bylaw 18B – Traffic Speed Limits	2005	
Beeby Road	100			Bylaw 18B – Traffic Speed Limits	2005	
Beehive Road	100			Bylaw 18B – Traffic Speed Limits	2005	
Bennett Road	100	between 200m & 3005m east of SH79		Bylaw 18B – Traffic Speed Limits	2005	
Bishop Road	100			Bylaw 18B – Traffic Speed Limits	2005	
Blackler Road	100			Bylaw 18B – Traffic Speed Limits	2005	
Blair Road	100			Bylaw 18B – Traffic Speed Limits	2005	
Blakiston Road	100			Bylaw 18B – Traffic Speed Limits	2005	

<b>Road Name</b>	<b>Speed</b>	<b>Location</b>	<b>Town</b>	<b>Legal Instrument</b>	<b>Date</b>	<b>Previous Legal Instrument</b>
Blandswood Road	100			Bylaw 18B – Traffic Speed Limits	2005	
Boiling Down Road	100			Bylaw 18B – Traffic Speed Limits	2005	
Borrell Road	100			Bylaw 18B – Traffic Speed Limits	2005	
Boyd Road	100			Bylaw 18B – Traffic Speed Limits	2005	
Brake Road	100			Bylaw 18B – Traffic Speed Limits	2005	
Brassell Road	100	between 60m and 2400m south of Beaconsfield Road		Bylaw 18B – Traffic Speed Limits	2005	
Breen Road	100			Bylaw 18B – Traffic Speed Limits	2005	
Brenton Road	100			Bylaw 18B – Traffic Speed Limits	2005	
Bridge Street	100	Arundel		Bylaw 18B – Traffic Speed Limits	2005	
Bridgie Road	100			Bylaw 18B – Traffic Speed Limits	2005	
Brien Road	100			Bylaw 18B – Traffic Speed Limits	2005	
Bristol Road	100	Between SH1 and 60m east of Beaconsfield Road		Bylaw 18B – Traffic Speed Limits	2005	
Brockley Road	100			Bylaw 18B – Traffic Speed Limits	2005	
Brodie Road	100			Bylaw 18B – Traffic Speed Limits	2005	
Brophy Road	100			Bylaw 18B – Traffic Speed Limits	2005	
Brosnan Road	100			Bylaw 18B – Traffic Speed Limits	2005	
Brothers Road	100			Bylaw 18B – Traffic Speed Limits	2005	
Brown Road	100			Bylaw 18B – Traffic Speed Limits	2005	
Budd Road	100			Bylaw 18B – Traffic Speed Limits	2005	
Burdon Road	100	between 285m & 5172m northeast of Woodbury Road		Bylaw 18B – Traffic Speed Limits	2005	
Burke Road	100			Bylaw 18B – Traffic Speed Limits	2005	
Burma Road	100			Bylaw 18B – Traffic Speed Limits	2005	
Burnham Road	100			Bylaw 18B – Traffic Speed Limits	2005	
Bushman Road	100			Bylaw 18B – Traffic Speed Limits	2005	
Butlers Road	100			Bylaw 18B – Traffic Speed Limits	2005	
Cadwallader Road	100			Bylaw 18B – Traffic Speed Limits	2005	
Campbell Road	100			Bylaw 18B – Traffic Speed Limits	2005	
Canal Road	100	between 260m & 3873m west of Rolleston Road		Bylaw 18B – Traffic Speed Limits	2005	
Carrig Road	100			Bylaw 18B – Traffic Speed Limits	2005	
Cartwrights Road	100			Bylaw 18B – Traffic Speed Limits	2005	
Casey Road	100			Bylaw 18B – Traffic Speed Limits	2005	
Chalmers Road	100			Bylaw 18B – Traffic Speed Limits	2005	

<b>Road Name</b>	<b>Speed</b>	<b>Location</b>	<b>Town</b>	<b>Legal Instrument</b>	<b>Date</b>	<b>Previous Legal Instrument</b>
Chapel Road	100			Bylaw 18B – Traffic Speed Limits	2005	
Chapman Road	100			Bylaw 18B – Traffic Speed Limits	2005	
Chisholm Road	100			Bylaw 18B – Traffic Speed Limits	2005	
Christmas Road	100			Bylaw 18B – Traffic Speed Limits	2005	
Clandeboyne Settlement Road	100			Bylaw 18B – Traffic Speed Limits	2005	
Claremont Bush Road	100			Bylaw 18B – Traffic Speed Limits	2005	
Claremont Road	100	between 1543m & 7437m west of Gleniti Road		Bylaw 18B – Traffic Speed Limits	2005	
Clark Road	100			Bylaw 18B – Traffic Speed Limits	2005	
Clarkson Road	100			Bylaw 18B – Traffic Speed Limits	2005	
Clay Road	100	between 40m south of Beaconsfield Road and Bristol Road		Bylaw 18B – Traffic Speed Limits	2005	
Cleland Road	100			Bylaw 18B – Traffic Speed Limits	2005	
Cliffs Road	100			Bylaw 18B – Traffic Speed Limits	2005	
Clogstown Street	100			Bylaw 18B – Traffic Speed Limits	2005	
Clyne Road	100			Bylaw 18B – Traffic Speed Limits	2005	
Coach Road	100			Bylaw 18B – Traffic Speed Limits	2005	
Coker Road	100			Bylaw 18B – Traffic Speed Limits	2005	
Coles Road	100			Bylaw 18B – Traffic Speed Limits	2005	
Collett Road	100			Bylaw 18B – Traffic Speed Limits	2005	
Condon Road	100			Bylaw 18B – Traffic Speed Limits	2005	
Cone Road	100			Bylaw 18B – Traffic Speed Limits	2005	
Connells Road	100			Bylaw 18B – Traffic Speed Limits	2005	
Connelly Road	100			Bylaw 18B – Traffic Speed Limits	2005	
Craig Road	100			Bylaw 18B – Traffic Speed Limits	2005	
Craigie Road	100			Bylaw 18B – Traffic Speed Limits	2005	
Cripps Road	100			Bylaw 18B – Traffic Speed Limits	2005	
Crombie Road	100			Bylaw 18B – Traffic Speed Limits	2005	
Cross Road	100			Bylaw 18B – Traffic Speed Limits	2005	
Daniels Road	100			Bylaw 18B – Traffic Speed Limits	2005	
Davison Road	100			Bylaw 18B – Traffic Speed Limits	2005	
Dennistoun Road	100	between 660m & 1045m west of east end		Bylaw 18B – Traffic Speed Limits	2005	
Dinda Road	100			Bylaw 18B – Traffic Speed Limits	2005	
Dip Road	100			Bylaw 18B – Traffic Speed Limits	2005	
Divan Road	100			Bylaw 18B – Traffic Speed Limits	2005	

<b>Road Name</b>	<b>Speed</b>	<b>Location</b>	<b>Town</b>	<b>Legal Instrument</b>	<b>Date</b>	<b>Previous Legal Instrument</b>
Doake Road	100			Bylaw 18B – Traffic Speed Limits	2005	
Domain Road	100			Bylaw 18B – Traffic Speed Limits	2005	
Dominion Road	100			Bylaw 18B – Traffic Speed Limits	2005	
Dominion Road East	100			Bylaw 18B – Traffic Speed Limits	2005	
Donald Fraser Road	100			Bylaw 18B – Traffic Speed Limits	2005	
Donehue Road	100			Bylaw 18B – Traffic Speed Limits	2005	
Donkin Road	100			Bylaw 18B – Traffic Speed Limits	2005	
Downs Road	100	between 2916m & 4511m west of Hewling Street		Bylaw 18B – Traffic Speed Limits	2005	
Doyle Road	100			Bylaw 18B – Traffic Speed Limits	2005	
Draffin Road	100			Bylaw 18B – Traffic Speed Limits	2005	
Driscoll Road	100			Bylaw 18B – Traffic Speed Limits	2005	
Earl Road	100			Bylaw 18B – Traffic Speed Limits	2005	
Edgar Road	100			Bylaw 18B – Traffic Speed Limits	2005	
Elgin Street	100			Bylaw 18B – Traffic Speed Limits	2005	
Elizabeth Street	100	between 0m & 100m east of Cave Pareora Cave Road,		Bylaw 18B – Traffic Speed Limits	2005	13 July 2000, No. 78, p. 1890
Ellery Road	100			Bylaw 18B – Traffic Speed Limits	2005	
Ellis Road	100			Bylaw 18B – Traffic Speed Limits	2005	
Elmslie Road	100			Bylaw 18B – Traffic Speed Limits	2005	
Epworth Road	100			Bylaw 18B – Traffic Speed Limits	2005	
Esler Road	100			Bylaw 18B – Traffic Speed Limits	2005	
Factory Road	100	between 220m & 7964m north of Richard Pearse		Bylaw 18B – Traffic Speed Limits	2005	
Fairfield Road	100			Bylaw 18B – Traffic Speed Limits	2005	
Fairview Road	100	between 4812m & 11685m southwest of Landsborough Road		Bylaw 18B – Traffic Speed Limits	2005	
Falvey Road	100			Bylaw 18B – Traffic Speed Limits	2005	
Farm Road	100			Bylaw 18B – Traffic Speed Limits	2005	
Ferry Road	100			Bylaw 18B – Traffic Speed Limits	2005	
Fitzgerald Road	100			Bylaw 18B – Traffic Speed Limits	2005	
Fiatman Road	100			Bylaw 18B – Traffic Speed Limits	2005	
Flaxburn Road	100			Bylaw 18B – Traffic Speed Limits	2005	
Fletcher Road	100			Bylaw 18B – Traffic Speed Limits	2005	
Foley Road	100			Bylaw 18B – Traffic Speed Limits	2005	
Four Peaks Road	100			Bylaw 18B – Traffic Speed Limits	2005	

<b>Road Name</b>	<b>Speed</b>	<b>Location</b>	<b>Town</b>	<b>Legal Instrument</b>	<b>Date</b>	<b>Previous Legal Instrument</b>
Fraser Road	100			Bylaw 18B – Traffic Speed Limits	2005	
Galbraith Road	100			Bylaw 18B – Traffic Speed Limits	2005	
Gale Cutting Road	100			Bylaw 18B – Traffic Speed Limits	2005	
Gardiner Road	100			Bylaw 18B – Traffic Speed Limits	2005	
Gays Pass Road	100			Bylaw 18B – Traffic Speed Limits	2005	
George Road	100			Bylaw 18B – Traffic Speed Limits	2005	
George Ward Road	100			Bylaw 18B – Traffic Speed Limits	2005	
Geraldine Flat Road	100			Bylaw 18B – Traffic Speed Limits	2005	
Geraldine-Arundel Road	100			Bylaw 18B – Traffic Speed Limits	2005	
Gladstone Street North	100	between 20m & 242m south of Orari Station Road	Orari	Bylaw 18B – Traffic Speed Limits	2005	
Gladstone Street South	100		Orari	Bylaw 18B – Traffic Speed Limits	2005	
Goodwin Road	100			Bylaw 18B – Traffic Speed Limits	2005	
Gould Road	100			Bylaw 18B – Traffic Speed Limits	2005	
Graham Road	100			Bylaw 18B – Traffic Speed Limits	2005	
Grange Settlement Road	100	between 140m & 625m north of Richard Pearse Drive		Bylaw 18B – Traffic Speed Limits	2005	
Gray Road	100			Bylaw 18B – Traffic Speed Limits	2005	
Gresham Road	100			Bylaw 18B – Traffic Speed Limits	2005	
Griffin Lane	100		Orari	Bylaw 18B – Traffic Speed Limits	2005	
Gualter Road	100			Bylaw 18B – Traffic Speed Limits	2005	
Guild Road	100	between 130m & 6030m north of Richard Pearse Drive		Bylaw 18B – Traffic Speed Limits	2005	
Guilford Road	100			Bylaw 18B – Traffic Speed Limits	2005	
Gully Bush Road	100			Bylaw 18B – Traffic Speed Limits	2005	
Guscott Road	100			Bylaw 18B – Traffic Speed Limits	2005	
Guthrie Road	100			Bylaw 18B – Traffic Speed Limits	2005	
Hadlow Road	100			Bylaw 18B – Traffic Speed Limits	2005	
Half Chain Road	100			Bylaw 18B – Traffic Speed Limits	2005	
Hall Road	100			Bylaw 18B – Traffic Speed Limits	2005	
Hailestead Road	100	between 540m & 941m north of SH8	Pleasant Point	Bylaw 18B – Traffic Speed Limits	2005	
Hammond Road	100			Bylaw 18B – Traffic Speed Limits	2005	
Harney Road	100			Bylaw 18B – Traffic Speed Limits	2005	
Harrison Road	100			Bylaw 18B – Traffic Speed Limits	2005	
Hawke Road	100			Bylaw 18B – Traffic Speed Limits	2005	

<b>Road Name</b>	<b>Speed</b>	<b>Location</b>	<b>Town</b>	<b>Legal Instrument</b>	<b>Date</b>	<b>Previous Legal Instrument</b>
Hays Road	100			Bylaw 18B – Traffic Speed Limits	2005	
Hazelburn Road	100			Bylaw 18B – Traffic Speed Limits	2005	
Hedley Road	100			Bylaw 18B – Traffic Speed Limits	2005	
Henriksen Road	100			Bylaw 18B – Traffic Speed Limits	2005	
Hides Road	100			Bylaw 18B – Traffic Speed Limits	2005	
Holme Station Road	100			Bylaw 18B – Traffic Speed Limits	2005	
Hornsey Road	100			Bylaw 18B – Traffic Speed Limits	2005	
Horsfall Road	100			Bylaw 18B – Traffic Speed Limits	2005	
Houstoun Road	100			Bylaw 18B – Traffic Speed Limits	2005	
Howe Road	100			Bylaw 18B – Traffic Speed Limits	2005	
Howell Road	100			Bylaw 18B – Traffic Speed Limits	2005	
Hyndman Road	100			Bylaw 18B – Traffic Speed Limits	2005	
Inglis Road	100			Bylaw 18B – Traffic Speed Limits	2005	
Iverach Road	100			Bylaw 18B – Traffic Speed Limits	2005	
John Talbot Road	100			Bylaw 18B – Traffic Speed Limits	2005	
Julloch Road	100			Bylaw 18B – Traffic Speed Limits	2005	
Kakahu Street	100		Orari	Bylaw 18B – Traffic Speed Limits	2005	
Kalaugher Road	100		Orari	Bylaw 18B – Traffic Speed Limits	2005	
Keane Road	100			Bylaw 18B – Traffic Speed Limits	2005	
Keen Road	100			Bylaw 18B – Traffic Speed Limits	2005	
Kellands Hill Road	100	between 1080m & 1920m north of Pages Road	Timaru	Bylaw 18B – Traffic Speed Limits	2005	19 February 1998, No. 28, p.629
Kennedy Street	100	between 660m & 770m east of Talbot Street		Bylaw 18B – Traffic Speed Limits	2005	
Kenneils Road	100			Bylaw 18B – Traffic Speed Limits	2005	
Kereta Road	100			Bylaw 18B – Traffic Speed Limits	2005	
Kerr Road	100			Bylaw 18B – Traffic Speed Limits	2005	
Kerrytown Road	100			Bylaw 18B – Traffic Speed Limits	2005	
King Road	100			Bylaw 18B – Traffic Speed Limits	2005	
Kirk Road	100			Bylaw 18B – Traffic Speed Limits	2005	
Lagoon Drive	100			Bylaw 18B – Traffic Speed Limits	2005	
Lamont Road	100			Bylaw 18B – Traffic Speed Limits	2005	
Landsborough Road	100	From Claremont Road to a point 60m west of Barton Road		Bylaw 18B – Traffic Speed Limits	2005	
Langley Downs Road	100			Bylaw 18B – Traffic Speed Limits	2005	
Langridge Road	100			Bylaw 18B – Traffic Speed Limits	2005	

<b>Road Name</b>	<b>Speed</b>	<b>Location</b>	<b>Town</b>	<b>Legal Instrument</b>	<b>Date</b>	<b>Previous Legal Instrument</b>
Laphorn Road	100			Bylaw 18B – Traffic Speed Limits	2005	
Leishman Road	100			Bylaw 18B – Traffic Speed Limits	2005	
Levels Plain Road	100			Bylaw 18B – Traffic Speed Limits	2005	
Levels Store Road	100			Bylaw 18B – Traffic Speed Limits	2005	
Levels Valley Road	100			Bylaw 18B – Traffic Speed Limits	2005	
Lewis Road	100			Bylaw 18B – Traffic Speed Limits	2005	
Ley Road	100			Bylaw 18B – Traffic Speed Limits	2005	
Leys Estate Road	100			Bylaw 18B – Traffic Speed Limits	2005	
Limestone Road	100			Bylaw 18B – Traffic Speed Limits	2005	
Limestone Valley Road	100			Bylaw 18B – Traffic Speed Limits	2005	
Little Road	100			Bylaw 18B – Traffic Speed Limits	2005	
Lloyd Road	100			Bylaw 18B – Traffic Speed Limits	2005	
Logan Road	100			Bylaw 18B – Traffic Speed Limits	2005	
Longview Road	100			Bylaw 18B – Traffic Speed Limits	2005	
Looker Road	100			Bylaw 18B – Traffic Speed Limits	2005	
Lookout Road	100			Bylaw 18B – Traffic Speed Limits	2005	
Love Road	100			Bylaw 18B – Traffic Speed Limits	2005	
Lundie Road	100			Bylaw 18B – Traffic Speed Limits	2005	
Lynch Road	100			Bylaw 18B – Traffic Speed Limits	2005	
Lynn Road	100			Bylaw 18B – Traffic Speed Limits	2005	
Lyon Road	100			Bylaw 18B – Traffic Speed Limits	2005	
Lysaght Road	100			Bylaw 18B – Traffic Speed Limits	2005	
Maberley Street	100			Bylaw 18B – Traffic Speed Limits	2005	
Macaulay Road	100			Bylaw 18B – Traffic Speed Limits	2005	
Mackle Road	100			Bylaw 18B – Traffic Speed Limits	2005	
Mahan Road	100			Bylaw 18B – Traffic Speed Limits	2005	
Main Waitohi Road	100			Bylaw 18B – Traffic Speed Limits	2005	
Manse Road	100	between 110m & 2223m southwest of SH8		Bylaw 18B – Traffic Speed Limits	2005	
Maori Gully Road	100			Bylaw 18B – Traffic Speed Limits	2005	
Maori Reserve Road	100			Bylaw 18B – Traffic Speed Limits	2005	
Margaret Street	100			Bylaw 18B – Traffic Speed Limits	2005	
Marshall Road	100			Bylaw 18B – Traffic Speed Limits	2005	
Maslin Road	100			Bylaw 18B – Traffic Speed Limits	2005	
Matthew Road	100			Bylaw 18B – Traffic Speed Limits	2005	
Maze Road	100			Bylaw 18B – Traffic Speed Limits	2005	

<b>Road Name</b>	<b>Speed</b>	<b>Location</b>	<b>Town</b>	<b>Legal Instrument</b>	<b>Date</b>	<b>Previous Legal Instrument</b>
McClelland Road	100			Bylaw 18B – Traffic Speed Limits	2005	
McCully Road	100			Bylaw 18B – Traffic Speed Limits	2005	
McIntosh Road	100			Bylaw 18B – Traffic Speed Limits	2005	
McKenzie Road	100			Bylaw 18B – Traffic Speed Limits	2005	
McKeown Road	100	between 150m & 4745m southwest of Woodbury Road		Bylaw 18B – Traffic Speed Limits	2005	
McKinnon Road	100			Bylaw 18B – Traffic Speed Limits	2005	
McLeod Road	100			Bylaw 18B – Traffic Speed Limits	2005	
McMaster Road	100			Bylaw 18B – Traffic Speed Limits	2005	
McNair Road	100	between 150m & 5584m north of Richard Pearse Drive		Bylaw 18B – Traffic Speed Limits	2005	
McPhersons Road	100			Bylaw 18B – Traffic Speed Limits	2005	
Meadows Road	100	between 1241m & 2653m north of SH1		Bylaw 18B – Traffic Speed Limits	2005	
Mees Road	100			Bylaw 18B – Traffic Speed Limits	2005	
Mellish Street	100			Bylaw 18B – Traffic Speed Limits	2005	
Metherell Road	100			Bylaw 18B – Traffic Speed Limits	2005	
Middle Road	100			Bylaw 18B – Traffic Speed Limits	2005	
Middlemiss Road	100			Bylaw 18B – Traffic Speed Limits	2005	
Middleswamp Road	100			Bylaw 18B – Traffic Speed Limits	2005	
Milford Clandeboye Road	100	between 50m & 10424m east of Murray Street		Bylaw 18B – Traffic Speed Limits	2005	
Milford Lagoon Road	100	between 235m & 3041m north of Stopbank Road		Bylaw 18B – Traffic Speed Limits	2005	
Mill Road	100			Bylaw 18B – Traffic Speed Limits	2005	
Milton Road	100			Bylaw 18B – Traffic Speed Limits	2005	
Moa Pass Road	100			Bylaw 18B – Traffic Speed Limits	2005	
Monument Road	100			Bylaw 18B – Traffic Speed Limits	2005	
Moore Road	100			Bylaw 18B – Traffic Speed Limits	2005	
Mount Gay Road	100			Bylaw 18B – Traffic Speed Limits	2005	
Mowat Road	100			Bylaw 18B – Traffic Speed Limits	2005	
Mt Horrible Road	100			Bylaw 18B – Traffic Speed Limits	2005	
Muff Road	100			Bylaw 18B – Traffic Speed Limits	2005	
Mullvihill Road	100			Bylaw 18B – Traffic Speed Limits	2005	
Munro Road	100			Bylaw 18B – Traffic Speed Limits	2005	
Murray Street	100			Bylaw 18B – Traffic Speed Limits	2005	
Naughton Road	100			Bylaw 18B – Traffic Speed Limits	2005	

<b>Road Name</b>	<b>Speed</b>	<b>Location</b>	<b>Town</b>	<b>Legal Instrument</b>	<b>Date</b>	<b>Previous Legal Instrument</b>
Newland Road	100			Bylaw 18B – Traffic Speed Limits	2005	
Newton Road	100			Bylaw 18B – Traffic Speed Limits	2005	
North Boundary Road	100			Bylaw 18B – Traffic Speed Limits	2005	
North Town Belt	100	between 50m & 1054m east of Murray Street		Bylaw 18B – Traffic Speed Limits	2005	
Oak Street	100	between 0m & 950m north of Hawke Road	Orari	Bylaw 18B – Traffic Speed Limits	2005	
Ohapi Settlement Road	100			Bylaw 18B – Traffic Speed Limits	2005	
Old Main South Road	100			Bylaw 18B – Traffic Speed Limits	2005	
Oliver Road	100			Bylaw 18B – Traffic Speed Limits	2005	
Omara Road	100			Bylaw 18B – Traffic Speed Limits	2005	
Omelvena Road	100			Bylaw 18B – Traffic Speed Limits	2005	
Opihi Road	100			Bylaw 18B – Traffic Speed Limits	2005	
Opihi School Road	100			Bylaw 18B – Traffic Speed Limits	2005	
Opihi Terrace Road	100			Bylaw 18B – Traffic Speed Limits	2005	
Opuha Street	100		Orari	Bylaw 18B – Traffic Speed Limits	2005	
Opuha Street East	100		Orari	Bylaw 18B – Traffic Speed Limits	2005	
Orakipaoa Island Road	100			Bylaw 18B – Traffic Speed Limits	2005	
Orari Back Road	100			Bylaw 18B – Traffic Speed Limits	2005	
Orari River Road	100			Bylaw 18B – Traffic Speed Limits	2005	
Orari Station Road	100	between 660m & 6275m west of SH1		Bylaw 18B – Traffic Speed Limits	2005	
Orari Street	100			Bylaw 18B – Traffic Speed Limits	2005	
Orton Rangitata Mouth Road	100			Bylaw 18B – Traffic Speed Limits	2005	
Oxford Crossing Road	100			Bylaw 18B – Traffic Speed Limits	2005	
Painton Road	100			Bylaw 18B – Traffic Speed Limits	2005	
Palk Road	100			Bylaw 18B – Traffic Speed Limits	2005	
Palmer Road	100			Bylaw 18B – Traffic Speed Limits	2005	
Panama Road	100			Bylaw 18B – Traffic Speed Limits	2005	
Parade	100		Timaru	Bylaw 18B – Traffic Speed Limits	2005	
Pareora Avenue	100	between 0m & 20m east of SH1		Bylaw 18B – Traffic Speed Limits	2005	
Pareora Ford Road	100			Bylaw 18B – Traffic Speed Limits	2005	
Parke Road	100			Bylaw 18B – Traffic Speed Limits	2005	
Parr Road	100			Bylaw 18B – Traffic Speed Limits	2005	
Patrick Road	100			Bylaw 18B – Traffic Speed Limits	2005	
Payne Road	100			Bylaw 18B – Traffic Speed Limits	2005	
Pearse Road	100			Bylaw 18B – Traffic Speed Limits	2005	

<b>Road Name</b>	<b>Speed</b>	<b>Location</b>	<b>Town</b>	<b>Legal Instrument</b>	<b>Date</b>	<b>Previous Legal Instrument</b>
Peel Forest Road	100	between 0m & 11283m north of Geraldine Arundel Road		Bylaw 18B – Traffic Speed Limits	2005	
Peel Street	100	Arundel		Bylaw 18B – Traffic Speed Limits	2005	
Penney Road	100			Bylaw 18B – Traffic Speed Limits	2005	
Phar Lap Road	100			Bylaw 18B – Traffic Speed Limits	2005	
Pit Road East	100			Bylaw 18B – Traffic Speed Limits	2005	
Pit Road West	100			Bylaw 18B – Traffic Speed Limits	2005	
Pithie Road	100			Bylaw 18B – Traffic Speed Limits	2005	
Pleasant Valley Road	100			Bylaw 18B – Traffic Speed Limits	2005	
Pooke Road	100			Bylaw 18B – Traffic Speed Limits	2005	
Poole Road	100			Bylaw 18B – Traffic Speed Limits	2005	
Pratt Road	100			Bylaw 18B – Traffic Speed Limits	2005	
Prattley Road	100			Bylaw 18B – Traffic Speed Limits	2005	
Pudjock Road	100			Bylaw 18B – Traffic Speed Limits	2005	
Purves Road	100			Bylaw 18B – Traffic Speed Limits	2005	
Quantock Road	100			Bylaw 18B – Traffic Speed Limits	2005	
Racecourse Road	100	Orari		Bylaw 18B – Traffic Speed Limits	2005	
Rae Road	100			Bylaw 18B – Traffic Speed Limits	2005	
Rangatira Valley Road	100			Bylaw 18B – Traffic Speed Limits	2005	
Rangitata Gorge Road	100	between 1750m & 48860m north of Blandswood Road		Bylaw 18B – Traffic Speed Limits	2005	
Rangitata Huts Road	100			Bylaw 18B – Traffic Speed Limits	2005	
Rangitata Island Road	100			Bylaw 18B – Traffic Speed Limits	2005	
Rapuwai Road	100			Bylaw 18B – Traffic Speed Limits	2005	
Reilly Road	100			Bylaw 18B – Traffic Speed Limits	2005	
Ribbonwood Road	100			Bylaw 18B – Traffic Speed Limits	2005	
Rice Road	100			Bylaw 18B – Traffic Speed Limits	2005	
Rise Road	100	between 245m & 7778m southeast of SH1		Bylaw 18B – Traffic Speed Limits	2005	
River Road	100	Waitohi		Bylaw 18B – Traffic Speed Limits	2005	
Roaring Camp Road	100			Bylaw 18B – Traffic Speed Limits	2005	
Robinson Road	100			Bylaw 18B – Traffic Speed Limits	2005	
Rockwood Road	100			Bylaw 18B – Traffic Speed Limits	2005	
Rocky Hundreds Road	100			Bylaw 18B – Traffic Speed Limits	2005	
Rolleston Road	100	between 380m & 7197m north of Canal Road		Bylaw 18B – Traffic Speed Limits	2005	
Rolling Ridges Road	100			Bylaw 18B – Traffic Speed Limits	2005	

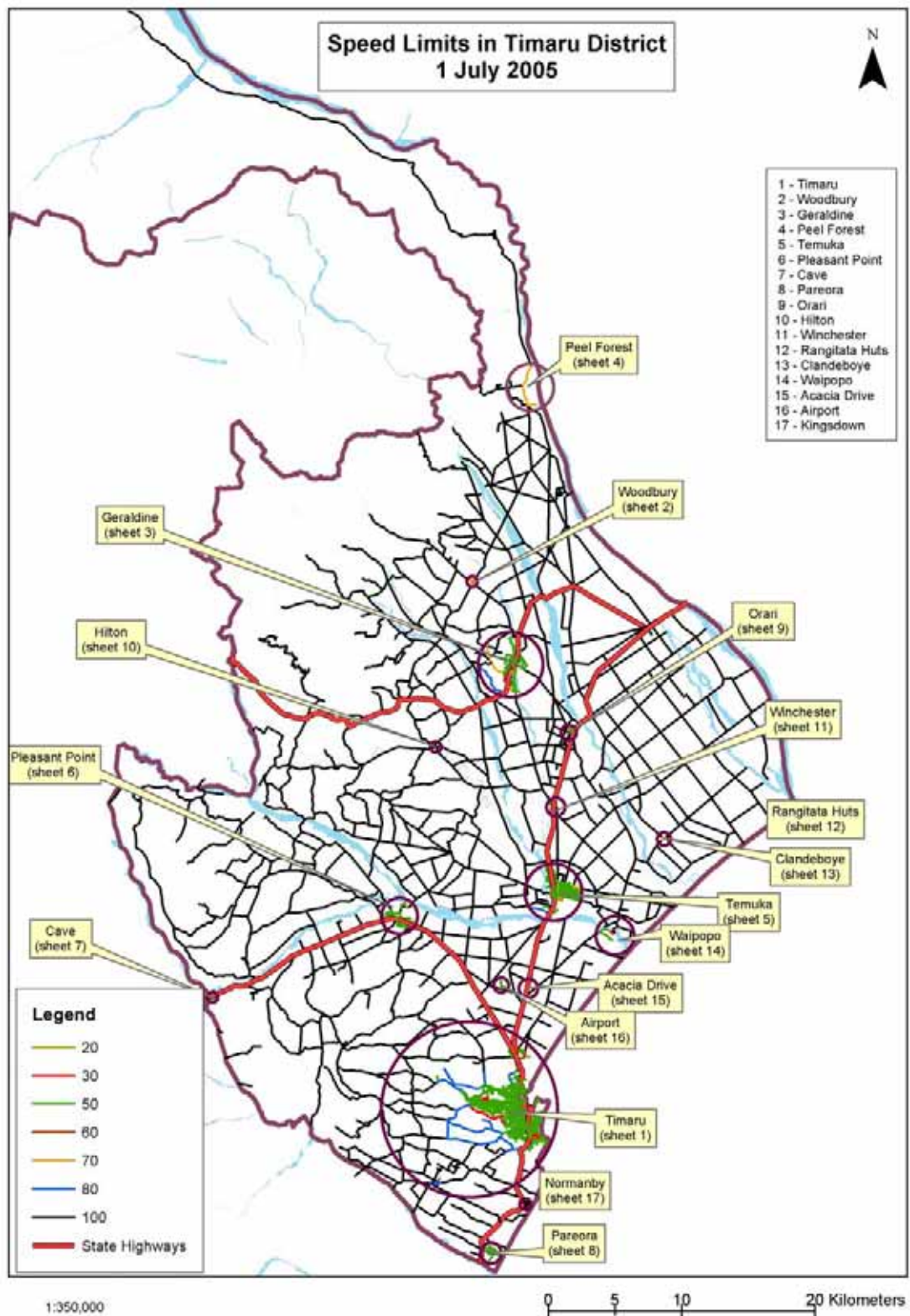
<b>Road Name</b>	<b>Speed</b>	<b>Location</b>	<b>Town</b>	<b>Legal Instrument</b>	<b>Date</b>	<b>Previous Legal Instrument</b>
Rosebrook Road	100			Bylaw 18B – Traffic Speed Limits	2005	
Rosewill Valley Road	100			Bylaw 18B – Traffic Speed Limits	2005	
Ruddenklau Road	100			Bylaw 18B – Traffic Speed Limits	2005	
Ryan Road	100			Bylaw 18B – Traffic Speed Limits	2005	
Ryans Crossing Road	100			Bylaw 18B – Traffic Speed Limits	2005	
Saddle Road	100			Bylaw 18B – Traffic Speed Limits	2005	
Salisbury Road	100			Bylaw 18B – Traffic Speed Limits	2005	
Sands Road	100			Bylaw 18B – Traffic Speed Limits	2005	
Scarborough Road	100			Bylaw 18B – Traffic Speed Limits	2005	
School Road	100			Bylaw 18B – Traffic Speed Limits	2005	
Scotsburn Road	100			Bylaw 18B – Traffic Speed Limits	2005	
Scott Road	100			Bylaw 18B – Traffic Speed Limits	2005	
Seadown Road	100	between 455m & 10739m north of SH1	Timaru	Bylaw 18B – Traffic Speed Limits	2005	19 February 1998, No. 28, p.629
Seaforth Settlement Road	100			Bylaw 18B – Traffic Speed Limits	2005	
Seaton Road	100			Bylaw 18B – Traffic Speed Limits	2005	
Seaward Road	100			Bylaw 18B – Traffic Speed Limits	2005	
Sercombe Road	100			Bylaw 18B – Traffic Speed Limits	2005	
Seven Sisters Road	100			Bylaw 18B – Traffic Speed Limits	2005	
Shaw Road	100			Bylaw 18B – Traffic Speed Limits	2005	
Sheep Dip Road	100			Bylaw 18B – Traffic Speed Limits	2005	
Sherratt Road	100			Bylaw 18B – Traffic Speed Limits	2005	
Sherris Road	100			Bylaw 18B – Traffic Speed Limits	2005	
Silverton Road	100			Bylaw 18B – Traffic Speed Limits	2005	
Simpson Road	100			Bylaw 18B – Traffic Speed Limits	2005	
Skinner Road	100			Bylaw 18B – Traffic Speed Limits	2005	
Slacks Valley Road	100			Bylaw 18B – Traffic Speed Limits	2005	
Slip Panel Road	100			Bylaw 18B – Traffic Speed Limits	2005	
Smart Munro Road	100			Bylaw 18B – Traffic Speed Limits	2005	
South Boundary Road	100			Bylaw 18B – Traffic Speed Limits	2005	
Sowerby Road	100			Bylaw 18B – Traffic Speed Limits	2005	
Springfield Road	100			Bylaw 18B – Traffic Speed Limits	2005	
Spur Hut Road	100			Bylaw 18B – Traffic Speed Limits	2005	
Spur Road	100			Bylaw 18B – Traffic Speed Limits	2005	
Stalker Road	100			Bylaw 18B – Traffic Speed Limits	2005	
Station Road	100			Bylaw 18B – Traffic Speed Limits	2005	

<b>Road Name</b>	<b>Speed</b>	<b>Location</b>	<b>Town</b>	<b>Legal Instrument</b>	<b>Date</b>	<b>Previous Legal Instrument</b>
Sterndale Valley Road	100			Bylaw 18B – Traffic Speed Limits	2005	
Stewart Road	100			Bylaw 18B – Traffic Speed Limits	2005	
Sullivan Road	100			Bylaw 18B – Traffic Speed Limits	2005	
Summerleaze Road	100			Bylaw 18B – Traffic Speed Limits	2005	
Summit Road	100			Bylaw 18B – Traffic Speed Limits	2005	
Sutherland Road	100			Bylaw 18B – Traffic Speed Limits	2005	
Sutton Road	100			Bylaw 18B – Traffic Speed Limits	2005	
Taiko Hall Road	100			Bylaw 18B – Traffic Speed Limits	2005	
Taiko Road	100			Bylaw 18B – Traffic Speed Limits	2005	
Tait Road	100			Bylaw 18B – Traffic Speed Limits	2005	
Talbot Street	100	between 250m and 500m south of Coles Street	Geraldine	Bylaw 18B – Traffic Speed Limits	2005	19 February 1998, No. 28, p. 629
Talbots Road	100			Bylaw 18B – Traffic Speed Limits	2005	
Taylor Road	100			Bylaw 18B – Traffic Speed Limits	2005	
Taylor Street North	100	Rangitata		Bylaw 18B – Traffic Speed Limits	2005	
Te Awa Road	100			Bylaw 18B – Traffic Speed Limits	2005	
Te Moana Road	100			Bylaw 18B – Traffic Speed Limits	2005	
Templer Street	100	between 220m & 1534m east of SH79		Bylaw 18B – Traffic Speed Limits	2005	
Tengawai Flat Road	100			Bylaw 18B – Traffic Speed Limits	2005	
Tengawai Road	100	between 765m & 2532m north of SH8	Pleasant Point	Bylaw 18B – Traffic Speed Limits	2005	
Thatcher Road	100			Bylaw 18B – Traffic Speed Limits	2005	
Thew Road	100			Bylaw 18B – Traffic Speed Limits	2005	
Thompson Road	100			Bylaw 18B – Traffic Speed Limits	2005	
Three Mile Bush Road	100			Bylaw 18B – Traffic Speed Limits	2005	
Timewell Road	100			Bylaw 18B – Traffic Speed Limits	2005	
Tiplady Road	100			Bylaw 18B – Traffic Speed Limits	2005	
Toner Road	100			Bylaw 18B – Traffic Speed Limits	2005	
Totara Valley Road	100			Bylaw 18B – Traffic Speed Limits	2005	
Townsend Road	100			Bylaw 18B – Traffic Speed Limits	2005	
Tripp Settlement Road	100			Bylaw 18B – Traffic Speed Limits	2005	
Tripp Street	100	Arundel		Bylaw 18B – Traffic Speed Limits	2005	
Unwin Lane	100			Bylaw 18B – Traffic Speed Limits	2005	
Uprichard Road	100			Bylaw 18B – Traffic Speed Limits	2005	
Vance Road	100			Bylaw 18B – Traffic Speed Limits	2005	
Waiapi Road	100			Bylaw 18B – Traffic Speed Limits	2005	
Waihi Gorge Road	100			Bylaw 18B – Traffic Speed Limits	2005	

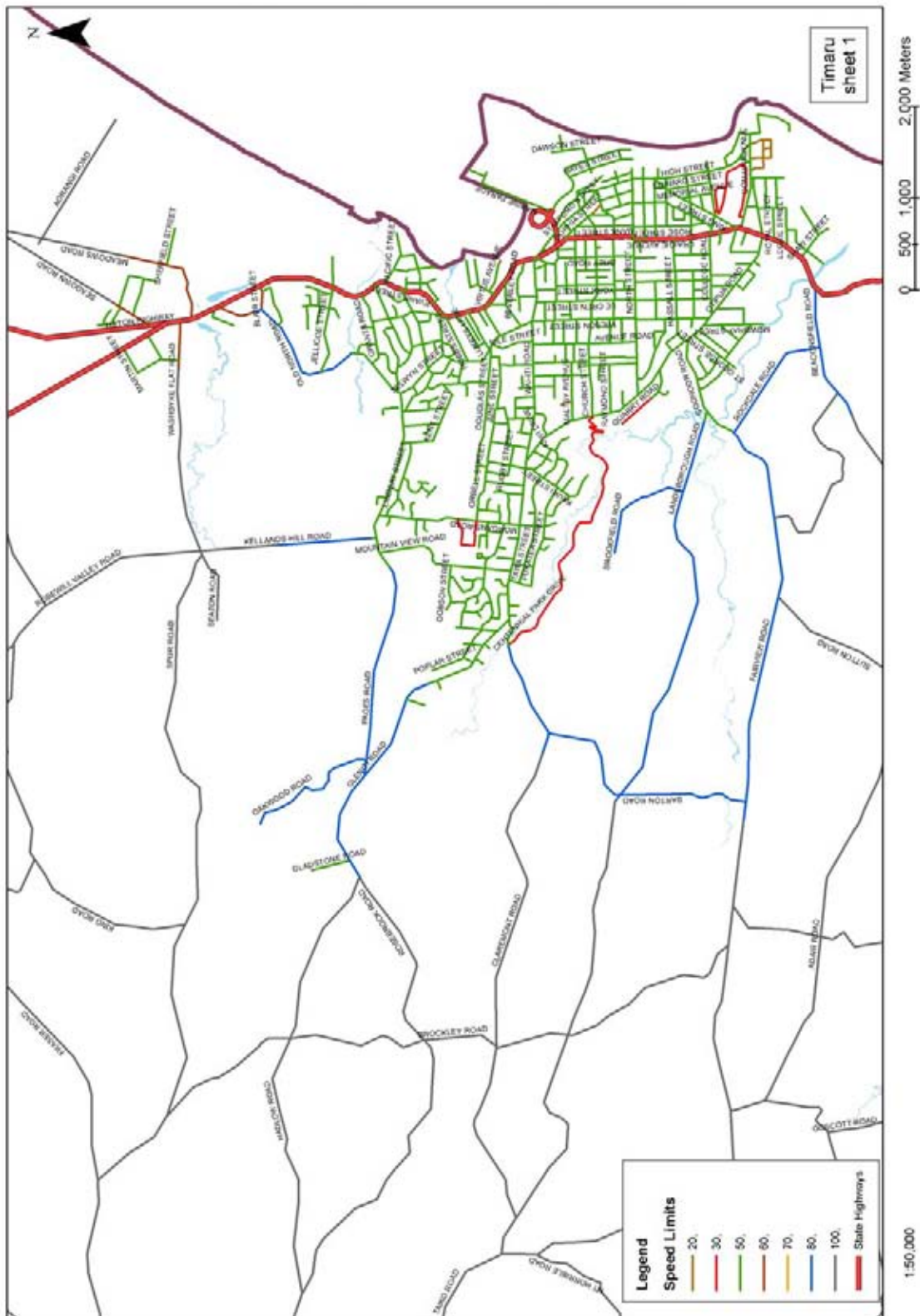
<b>Road Name</b>	<b>Speed</b>	<b>Location</b>	<b>Town</b>	<b>Legal Instrument</b>	<b>Date</b>	<b>Previous Legal Instrument</b>
Waikari Road	100			Bylaw 18B – Traffic Speed Limits	2005	
Waimarie Road	100			Bylaw 18B – Traffic Speed Limits	2005	
Waipopo Road	100	between 0m & 4410m north of Seadown Road		Bylaw 18B – Traffic Speed Limits	2005	
Waitohi Pleasant Point Road	100			Bylaw 18B – Traffic Speed Limits	2005	
Waitohi Temuka Road	100	between 200m & 8004m west of SH1		Bylaw 18B – Traffic Speed Limits	2005	
Walker Road	100			Bylaw 18B – Traffic Speed Limits	2005	
Wallace Road	100			Bylaw 18B – Traffic Speed Limits	2005	
Ward Road	100			Bylaw 18B – Traffic Speed Limits	2005	
Wareing Road	100			Bylaw 18B – Traffic Speed Limits	2005	
Washdyke Flat Road	100	between 540m & 2534m west of SH1	Timaru	Bylaw 18B – Traffic Speed Limits	2005	
Wells Road	100			Bylaw 18B – Traffic Speed Limits	2005	
White Road	100			Bylaw 18B – Traffic Speed Limits	2005	
Wigley Road	100			Bylaw 18B – Traffic Speed Limits	2005	
Wilks Road	100			Bylaw 18B – Traffic Speed Limits	2005	
William Street	100	Normanby		Bylaw 18B – Traffic Speed Limits	2005	
Williams Road	100			Bylaw 18B – Traffic Speed Limits	2005	
Wilson Road	100			Bylaw 18B – Traffic Speed Limits	2005	
Winchester Hanging Rock Road	100			Bylaw 18B – Traffic Speed Limits	2005	
Winchester-Geraldine Road	100	between 360m north of SH1 and 500m south of Coles Street		Bylaw 18B – Traffic Speed Limits	2005	
Wisely Road	100			Bylaw 18B – Traffic Speed Limits	2005	
Woodbury Road	100	between 200m & 5539m west of SH79		Bylaw 18B – Traffic Speed Limits	2005	
Woodbury Road	100	between 6169m & 10157m west of SH79		Bylaw 18B – Traffic Speed Limits	2005	
Woodhead Road	100			Bylaw 18B – Traffic Speed Limits	2005	
Wooding Road	100			Bylaw 18B – Traffic Speed Limits	2005	
Woodside Road	100			Bylaw 18B – Traffic Speed Limits	2005	
Yates Road	100			Bylaw 18B – Traffic Speed Limits	2005	
Young Road	100			Bylaw 18B – Traffic Speed Limits	2005	

# MAPS

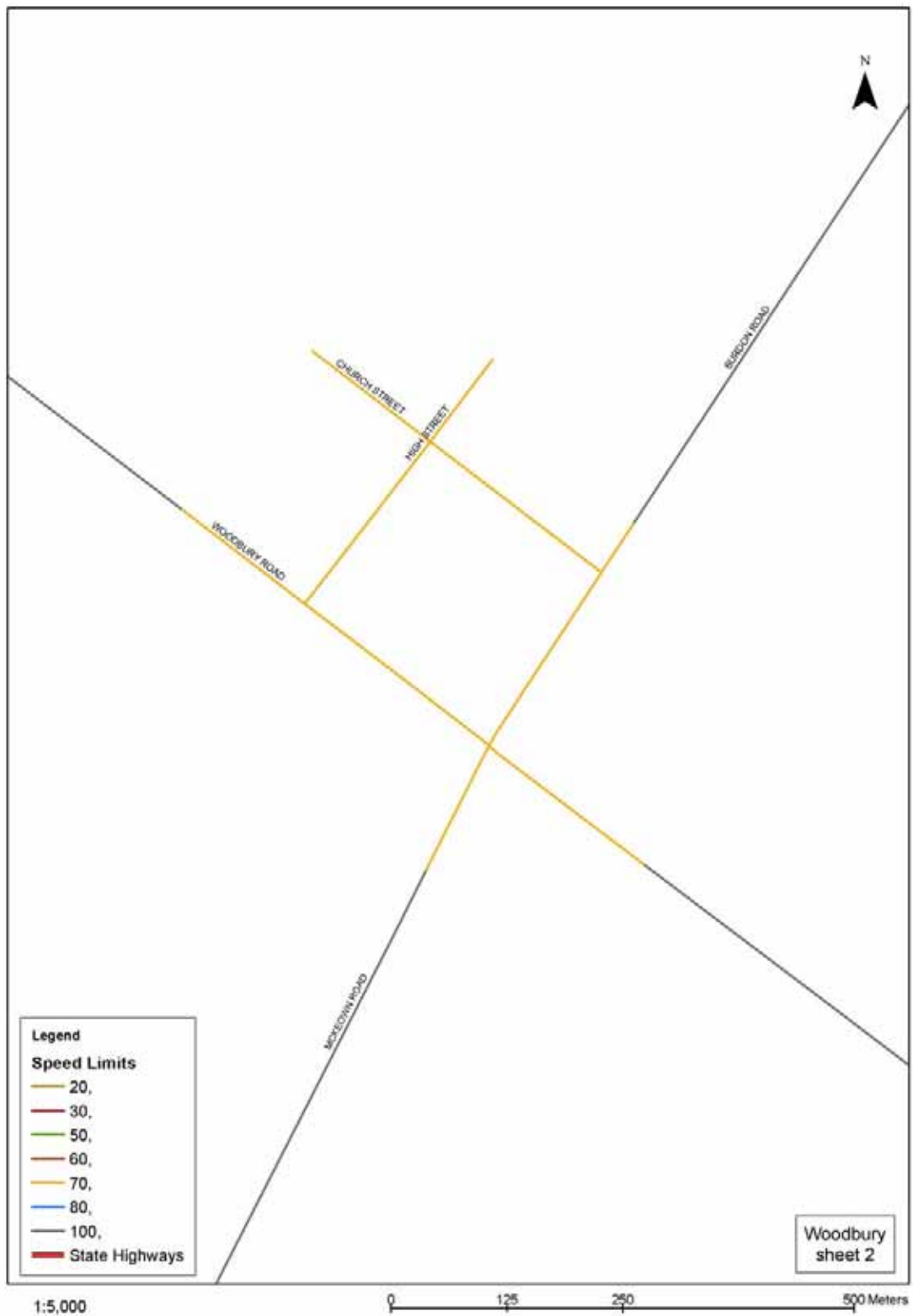
## SPEED LIMITS IN TIMARU DISTRICT



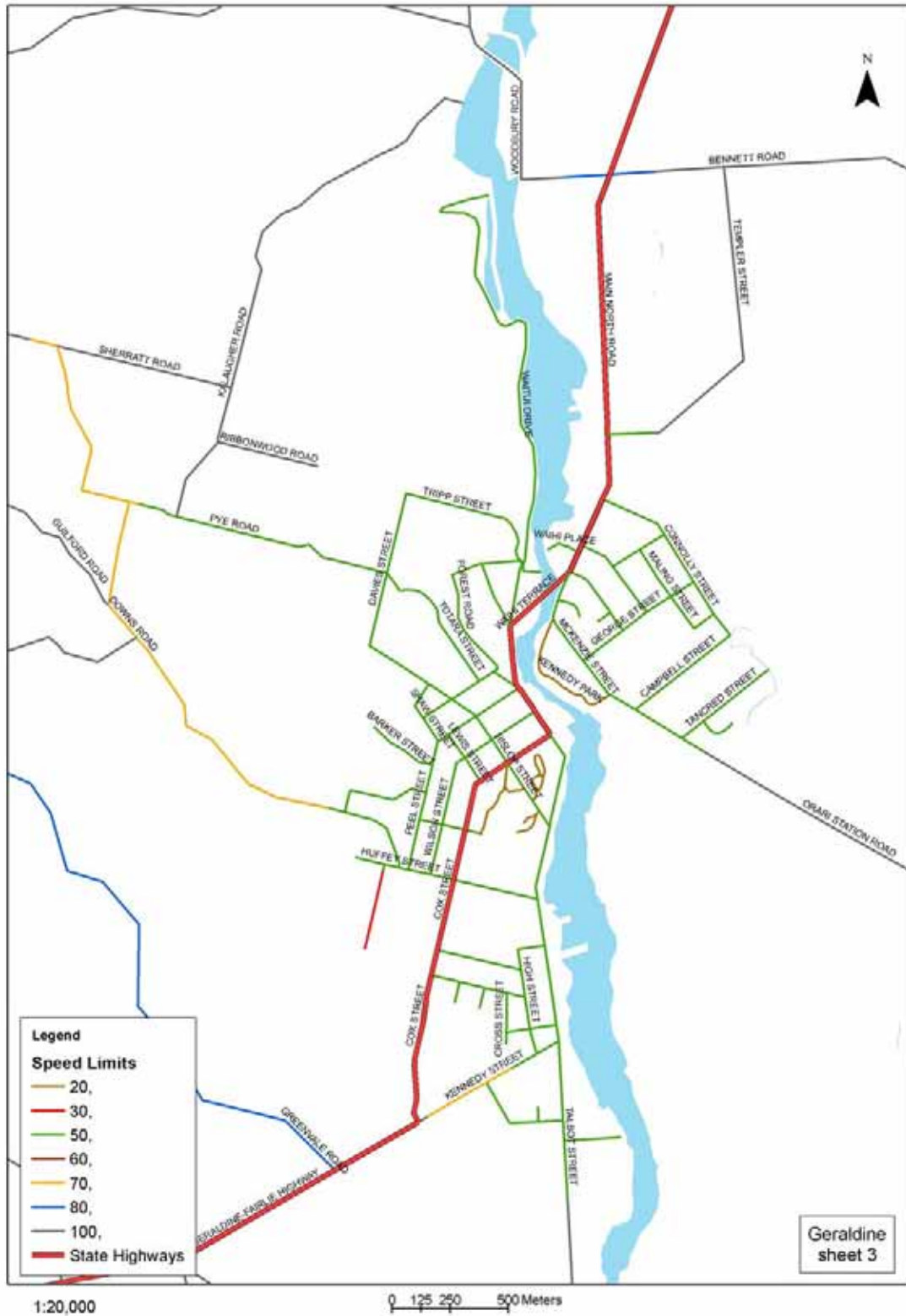
# TIMARU



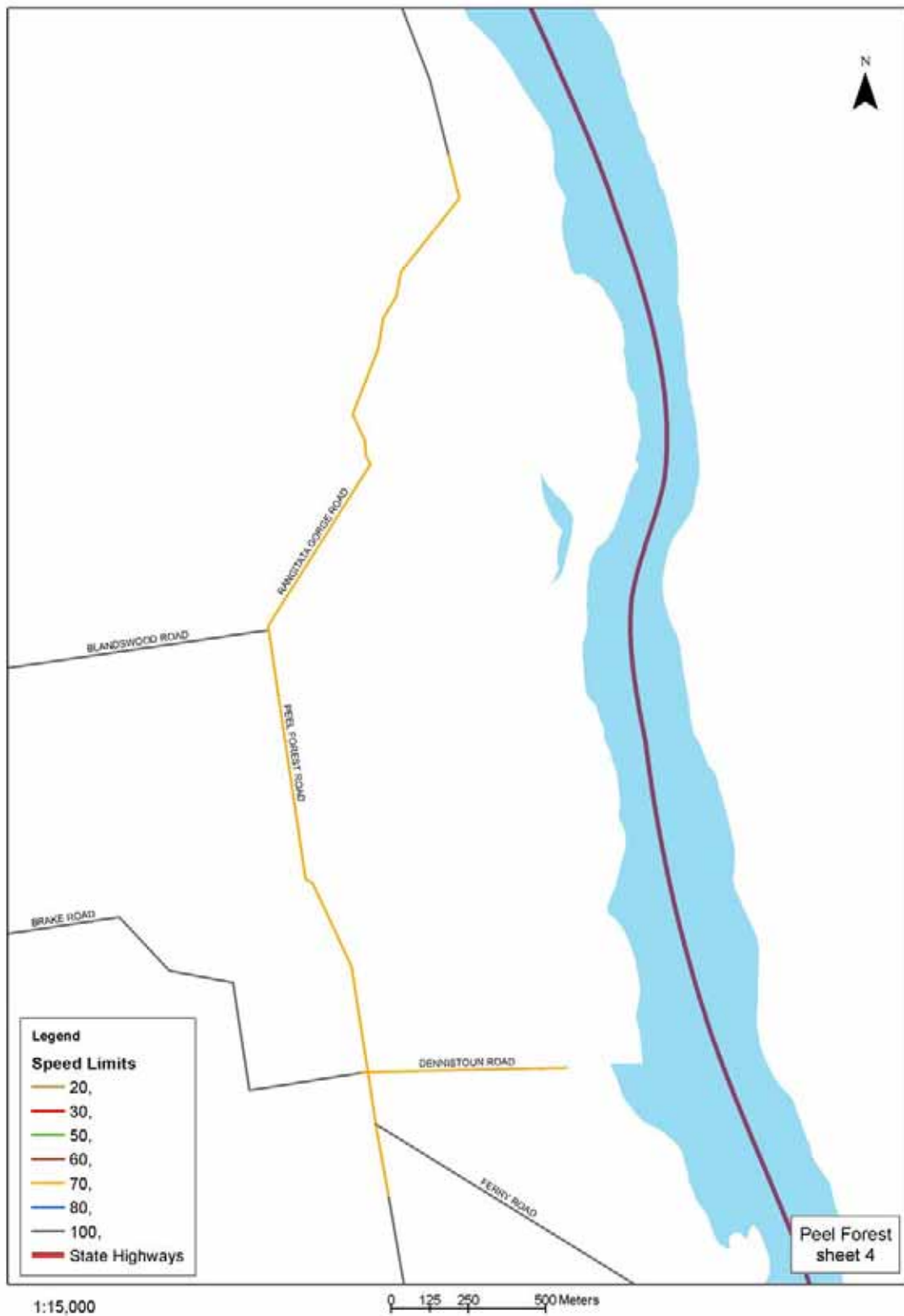
# WOODBURY



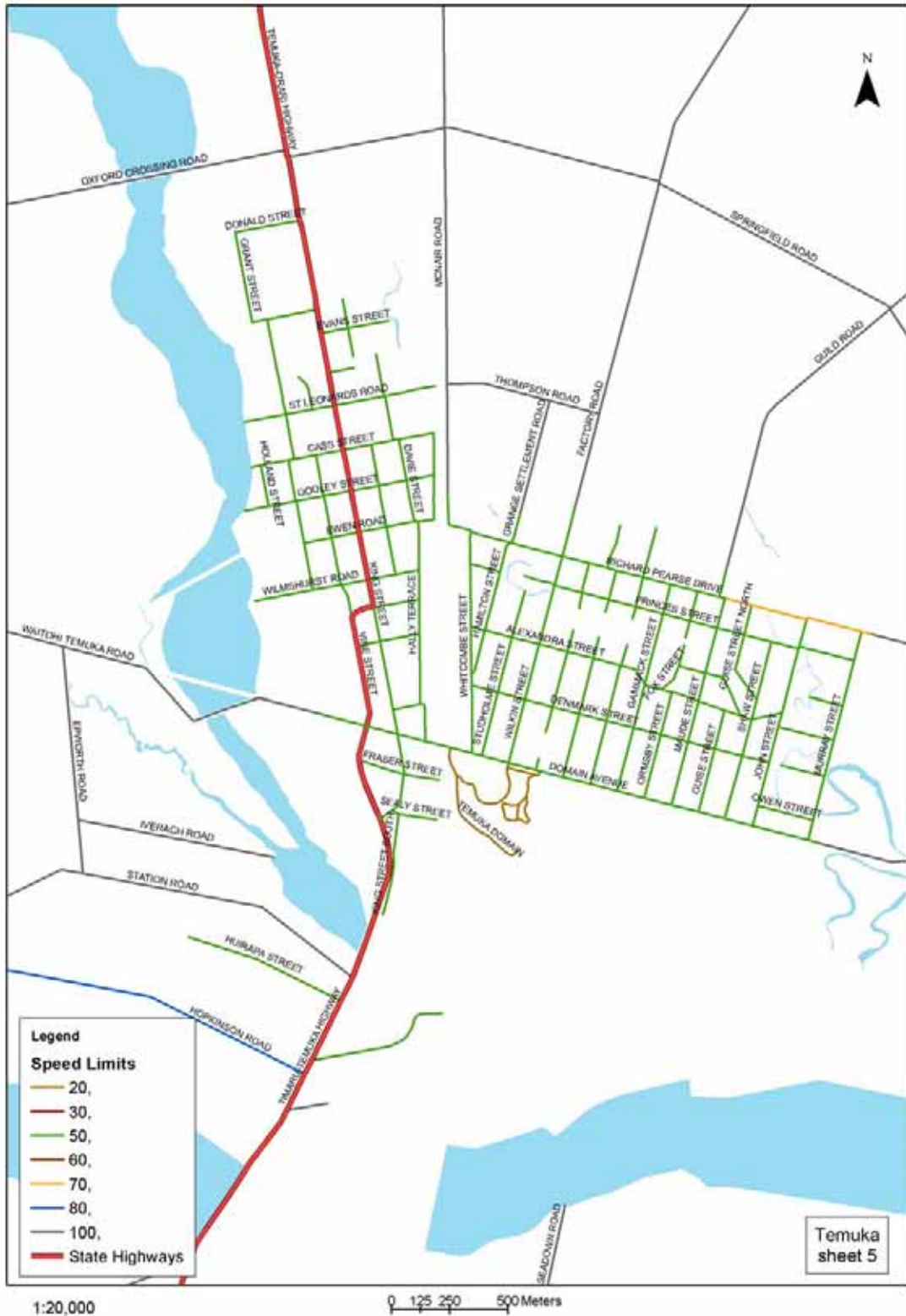
# GERALDINE



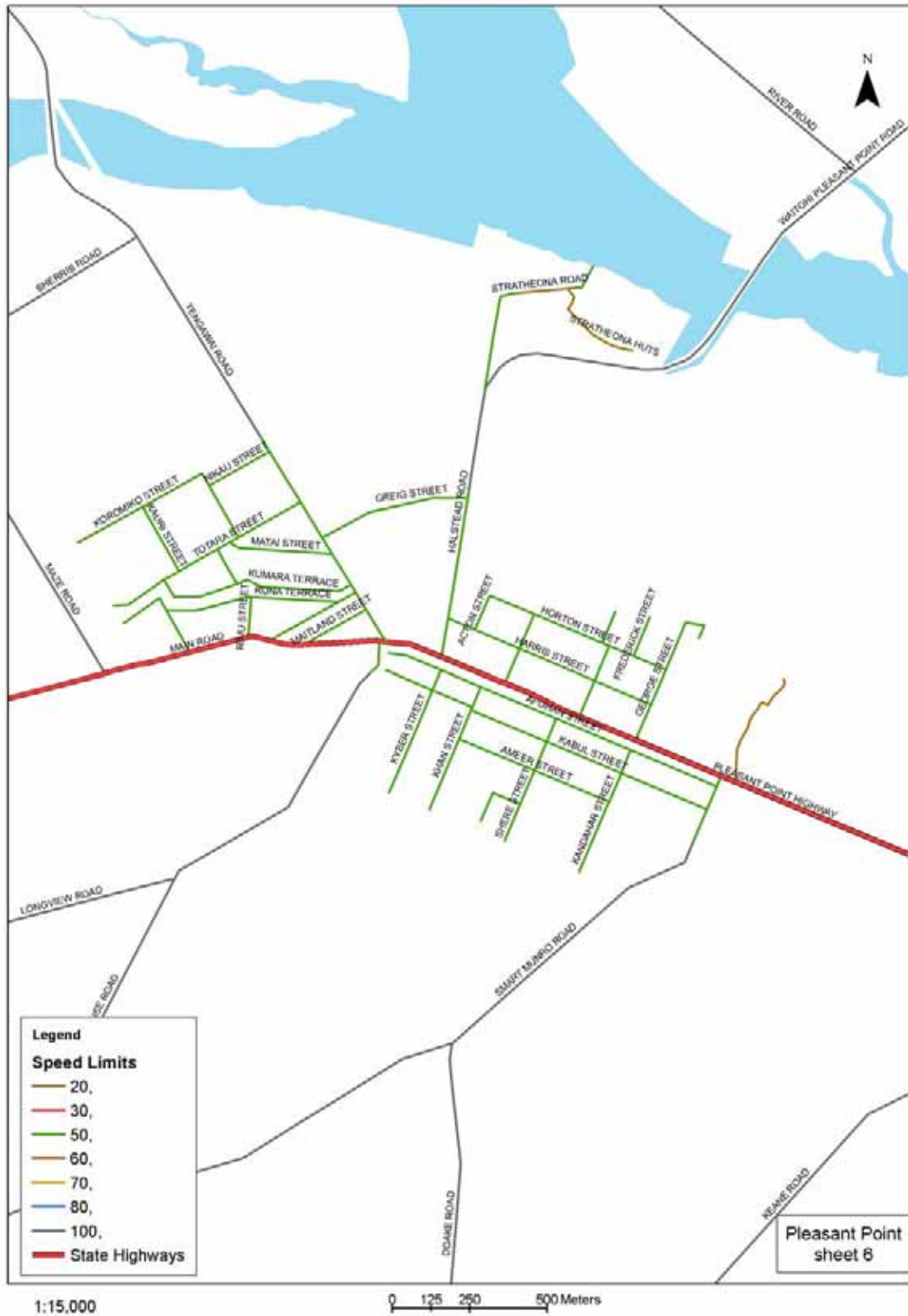
# PEEL FOREST



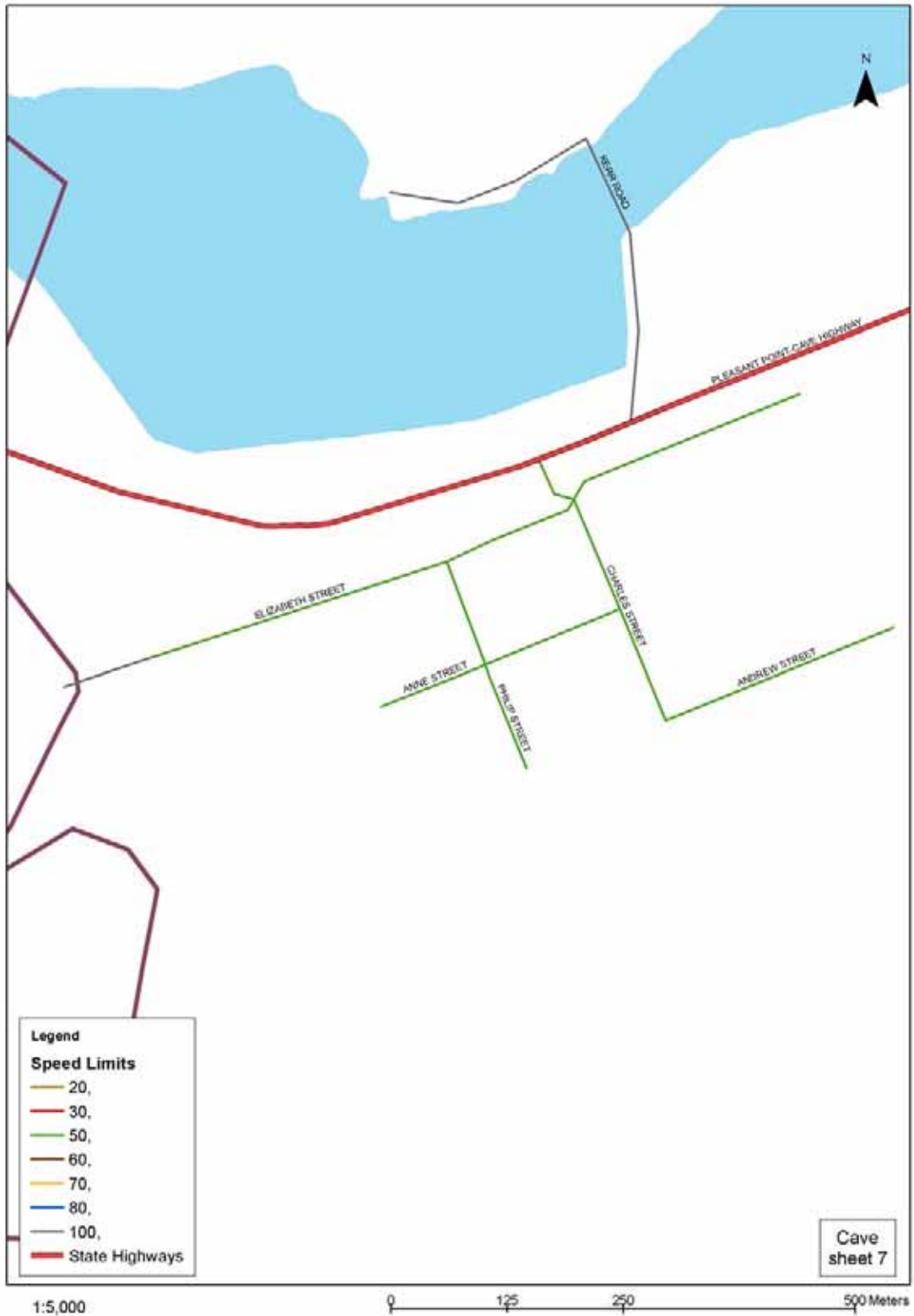
# TEMUKA



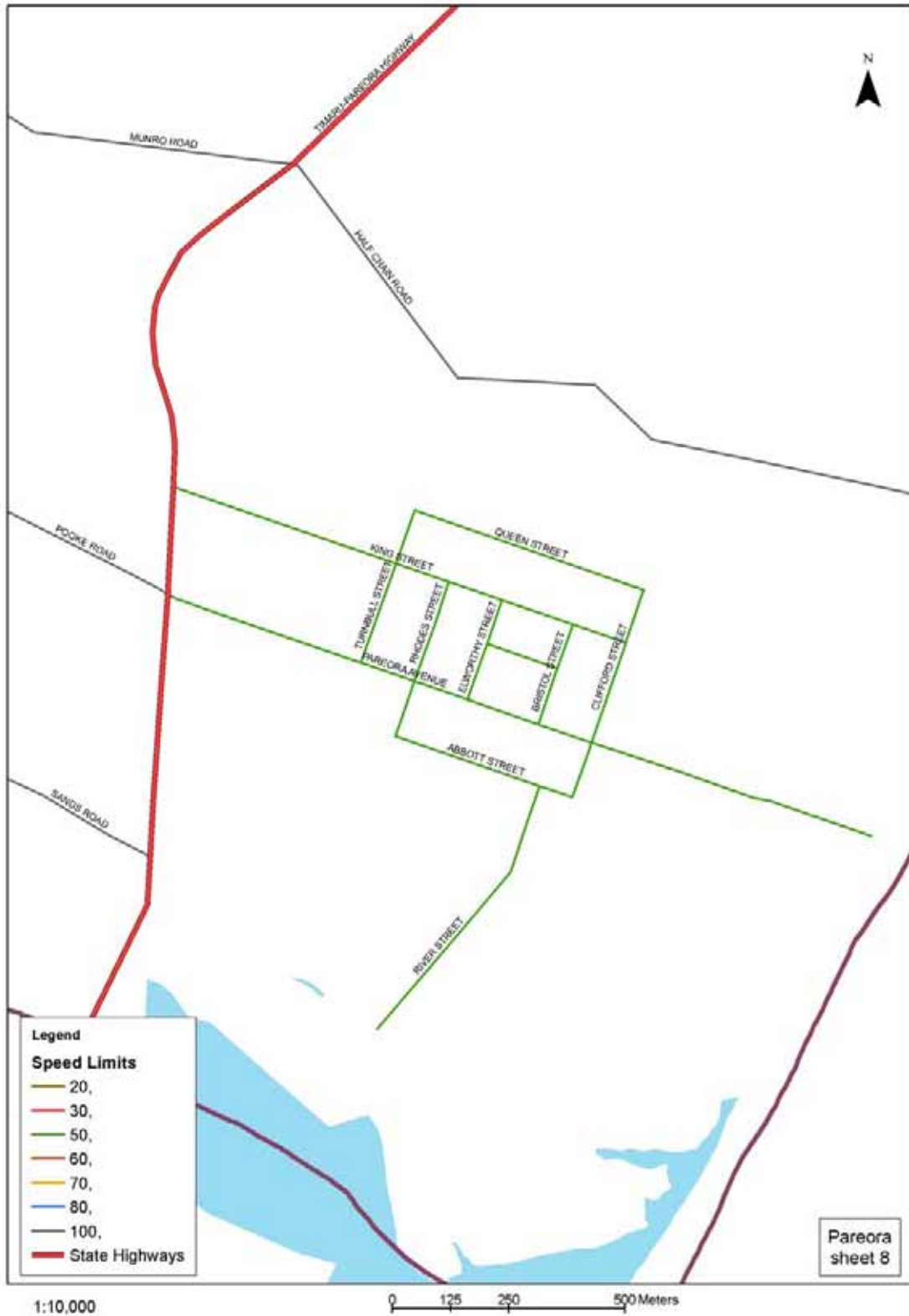
# PLEASANT POINT



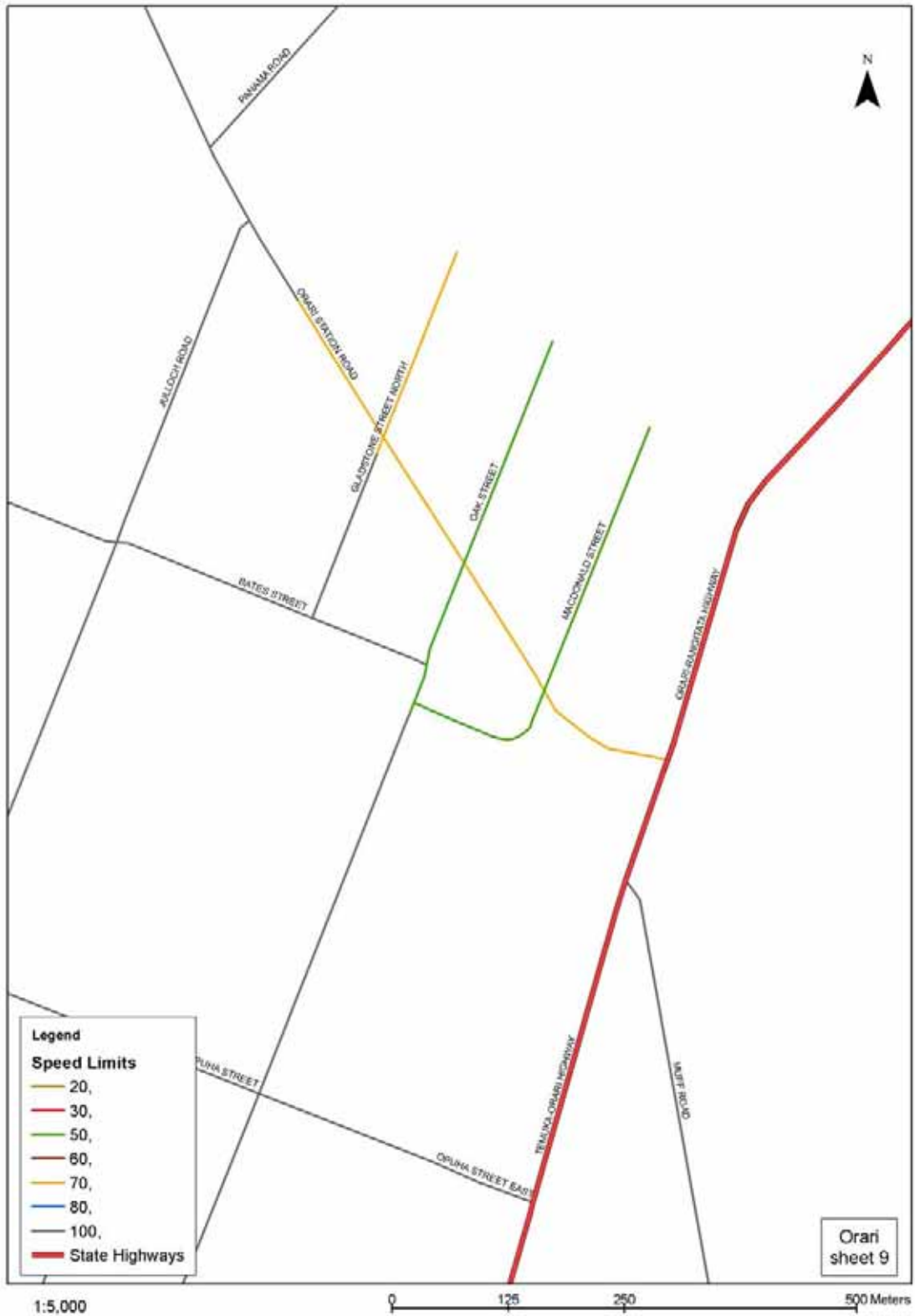
CAVE



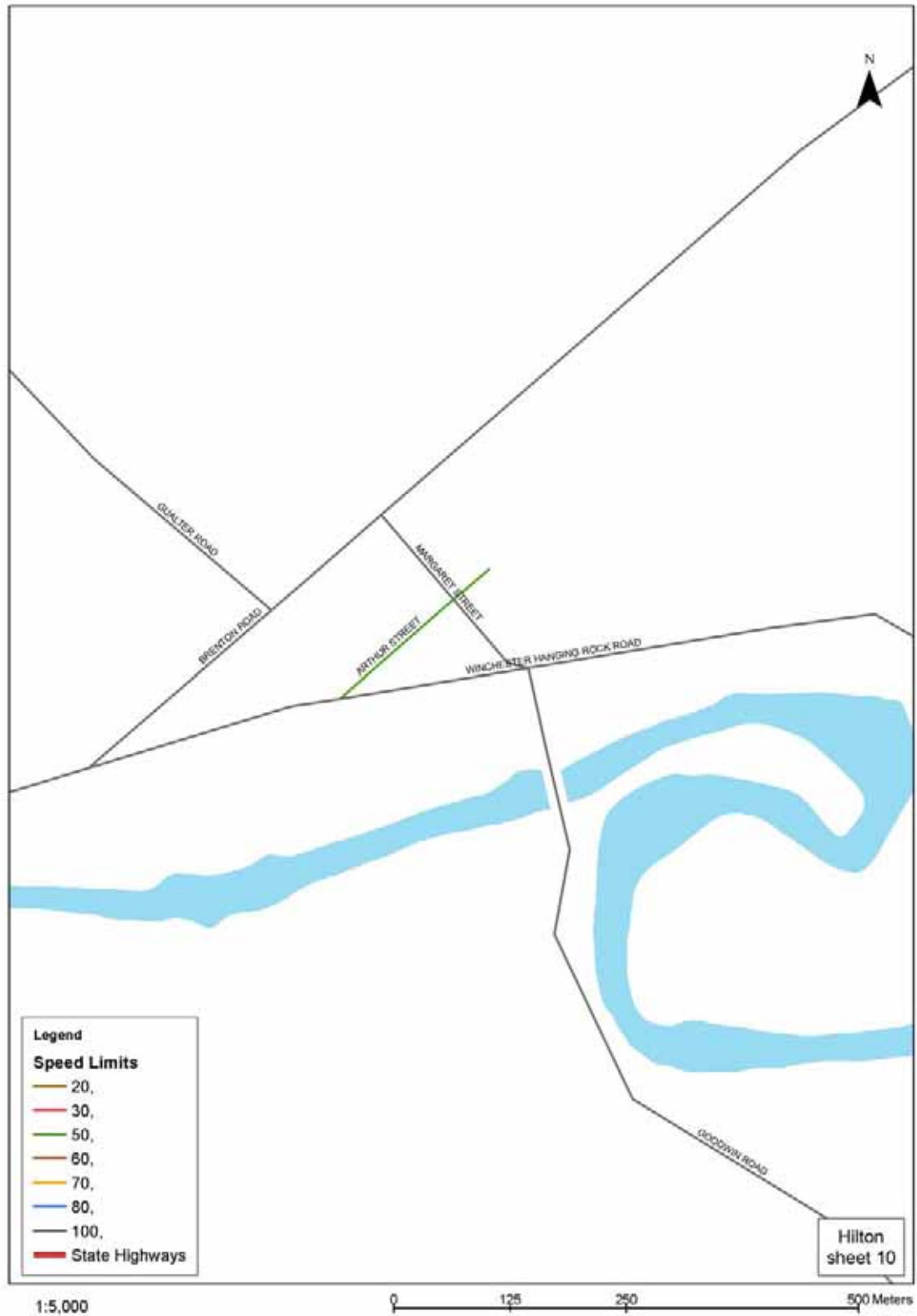
# PAREORA



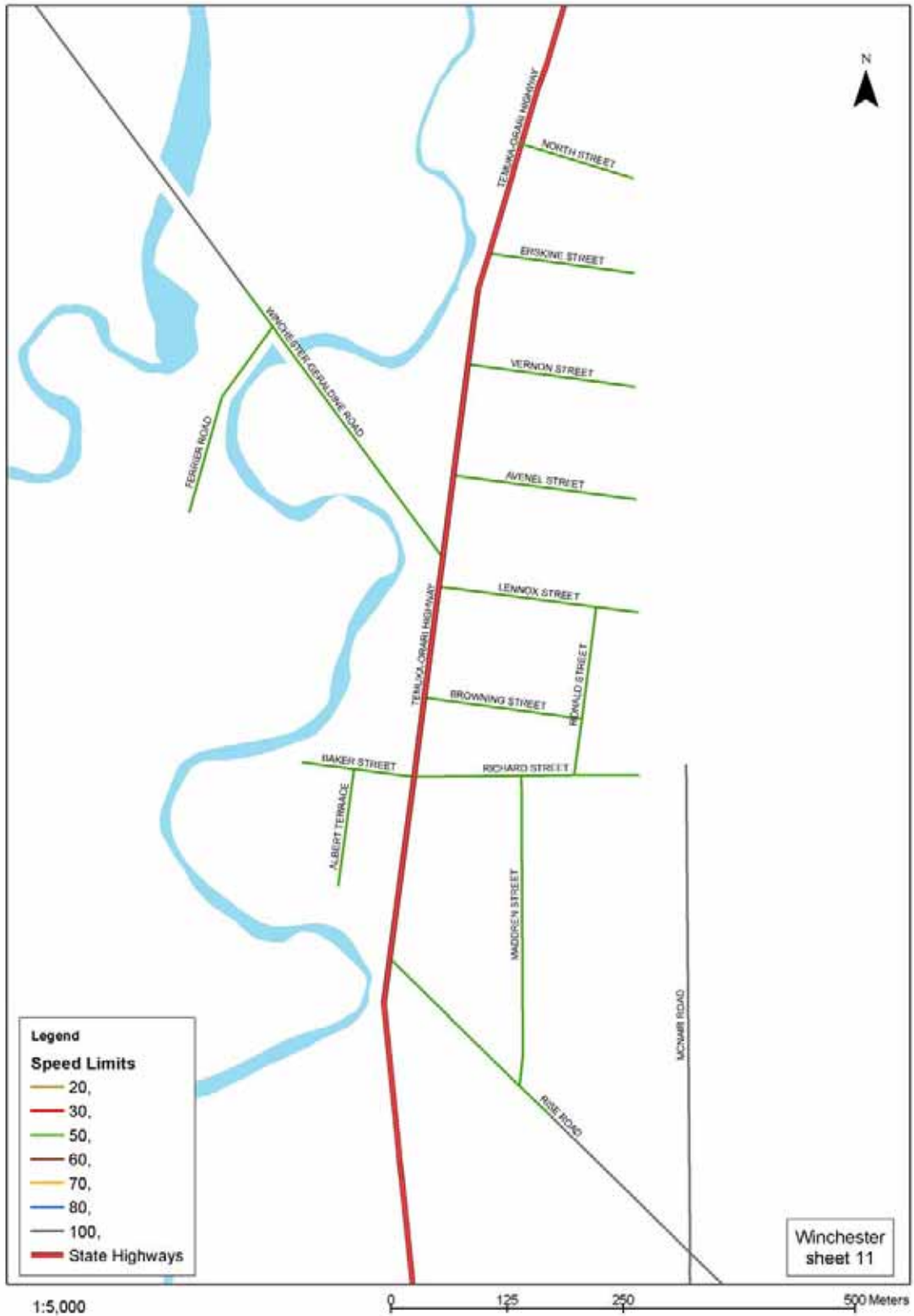
# ORARI



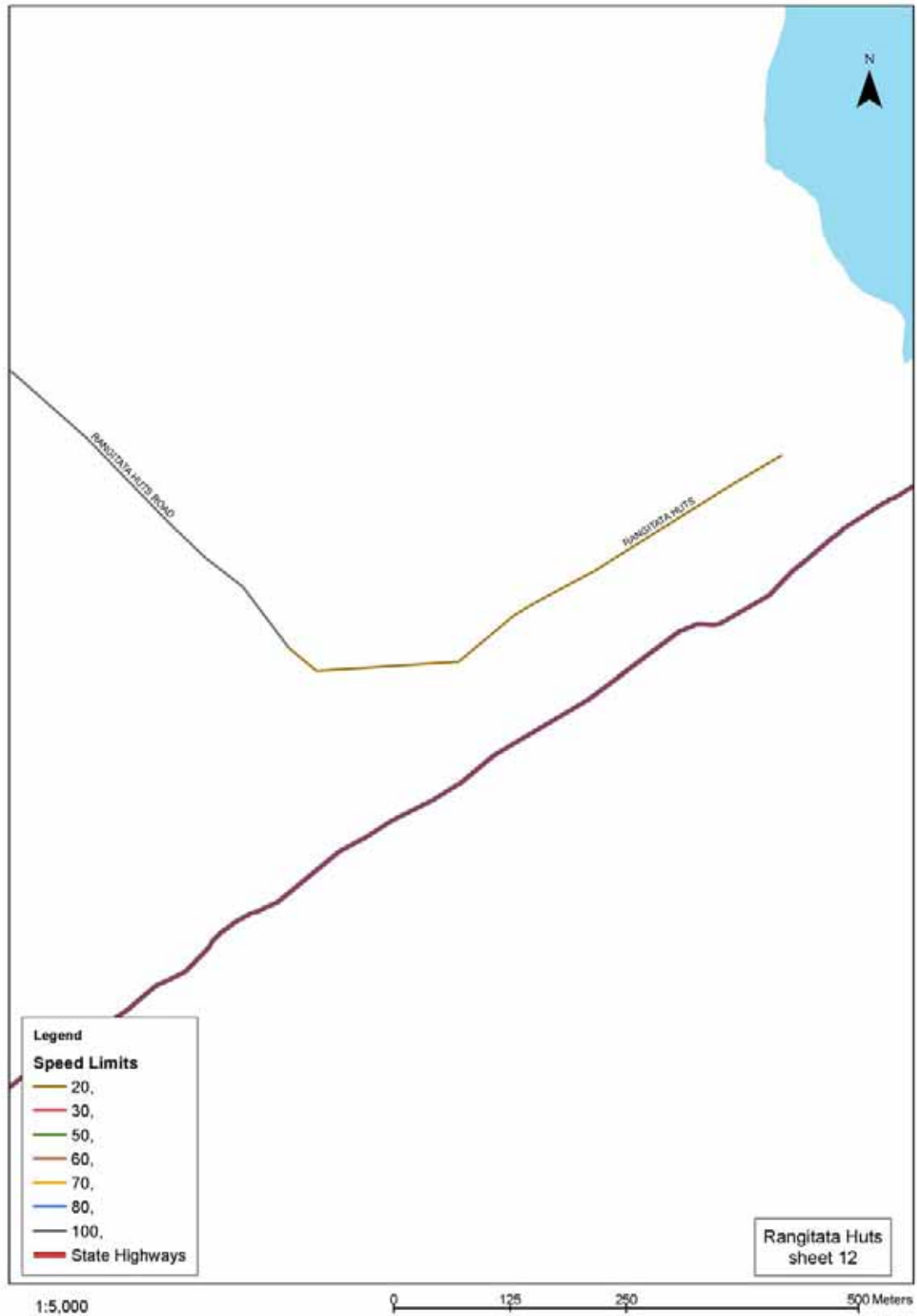
# HILTON



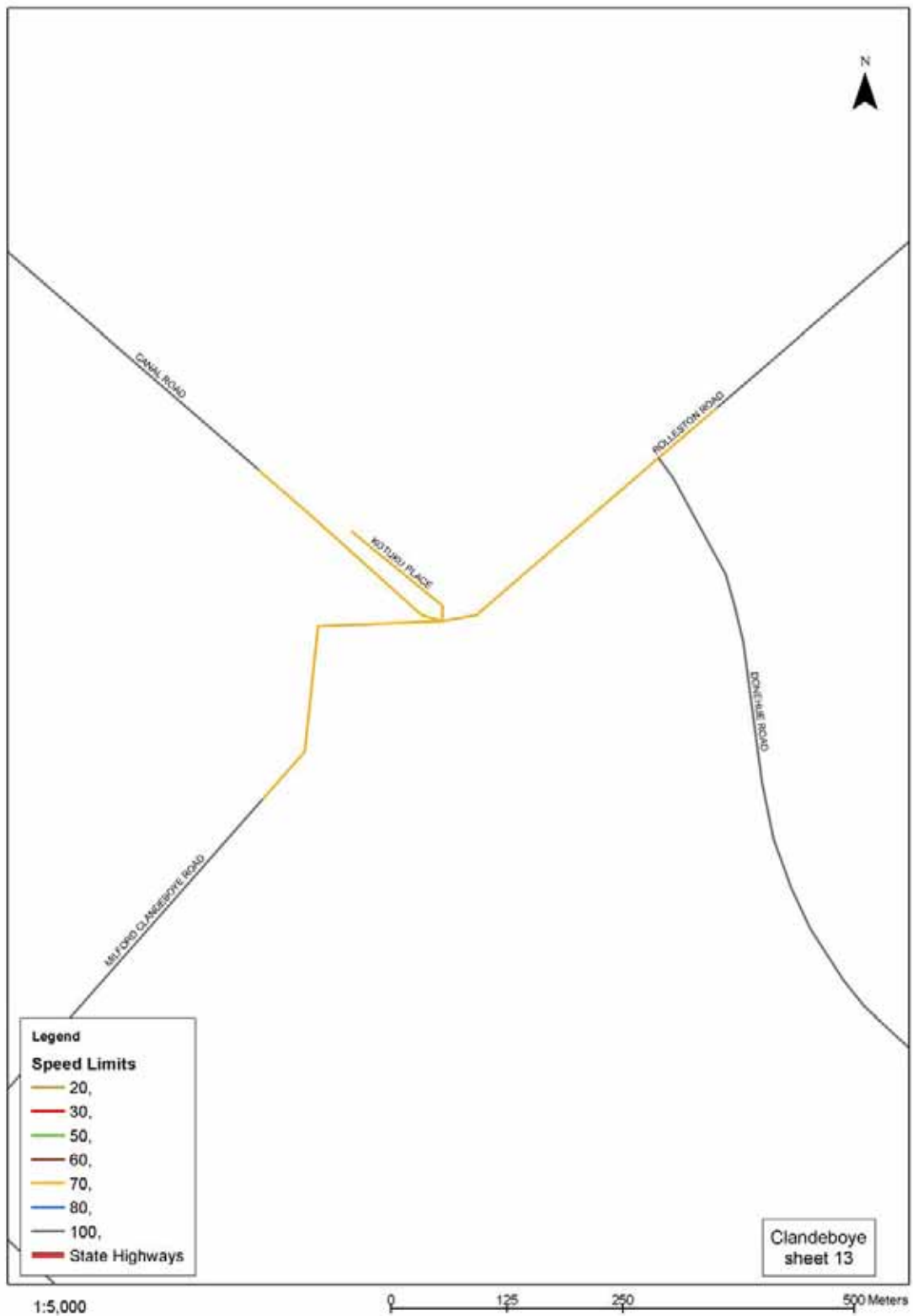
# WINCHESTER



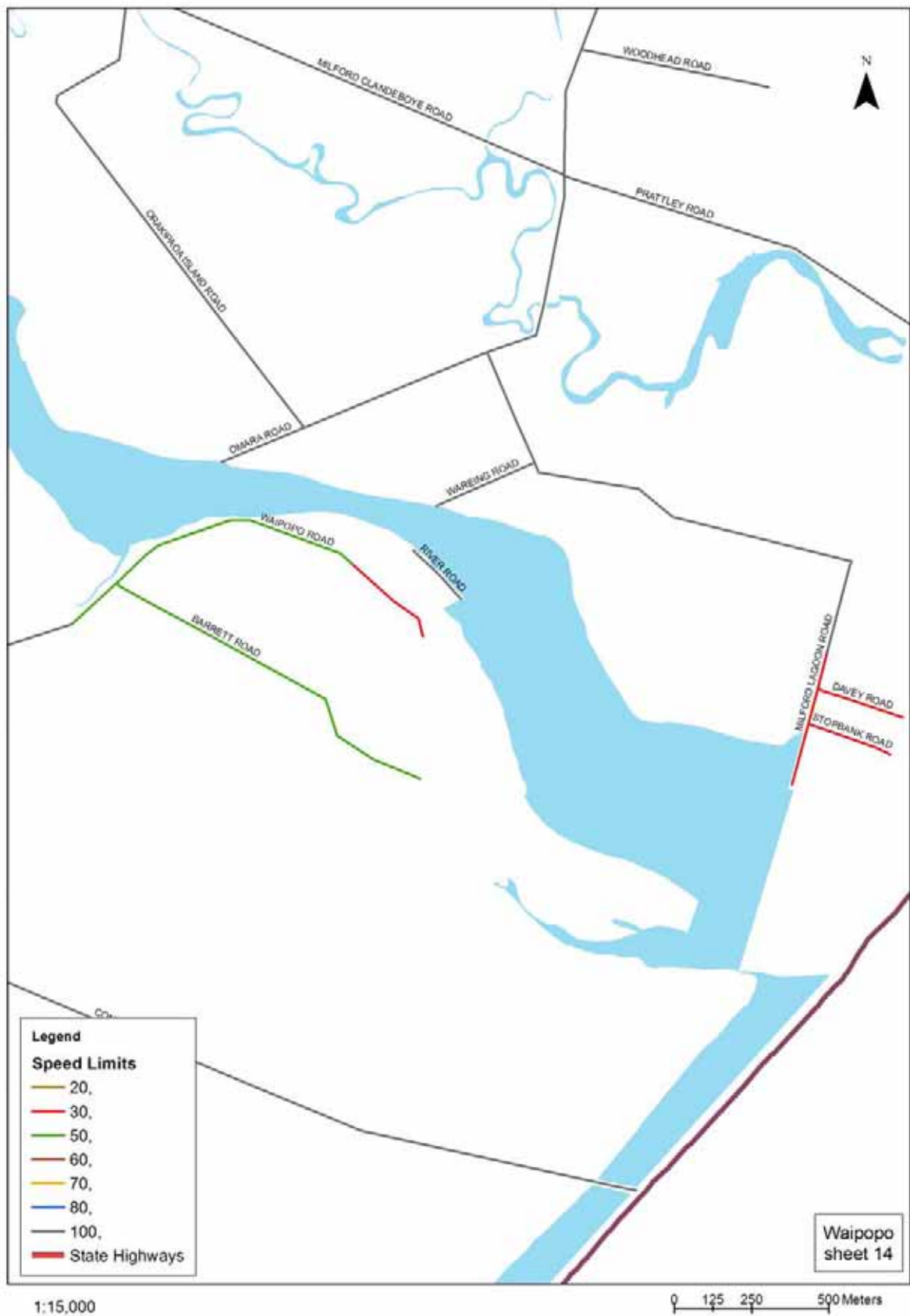
## RANGITATA HUTS



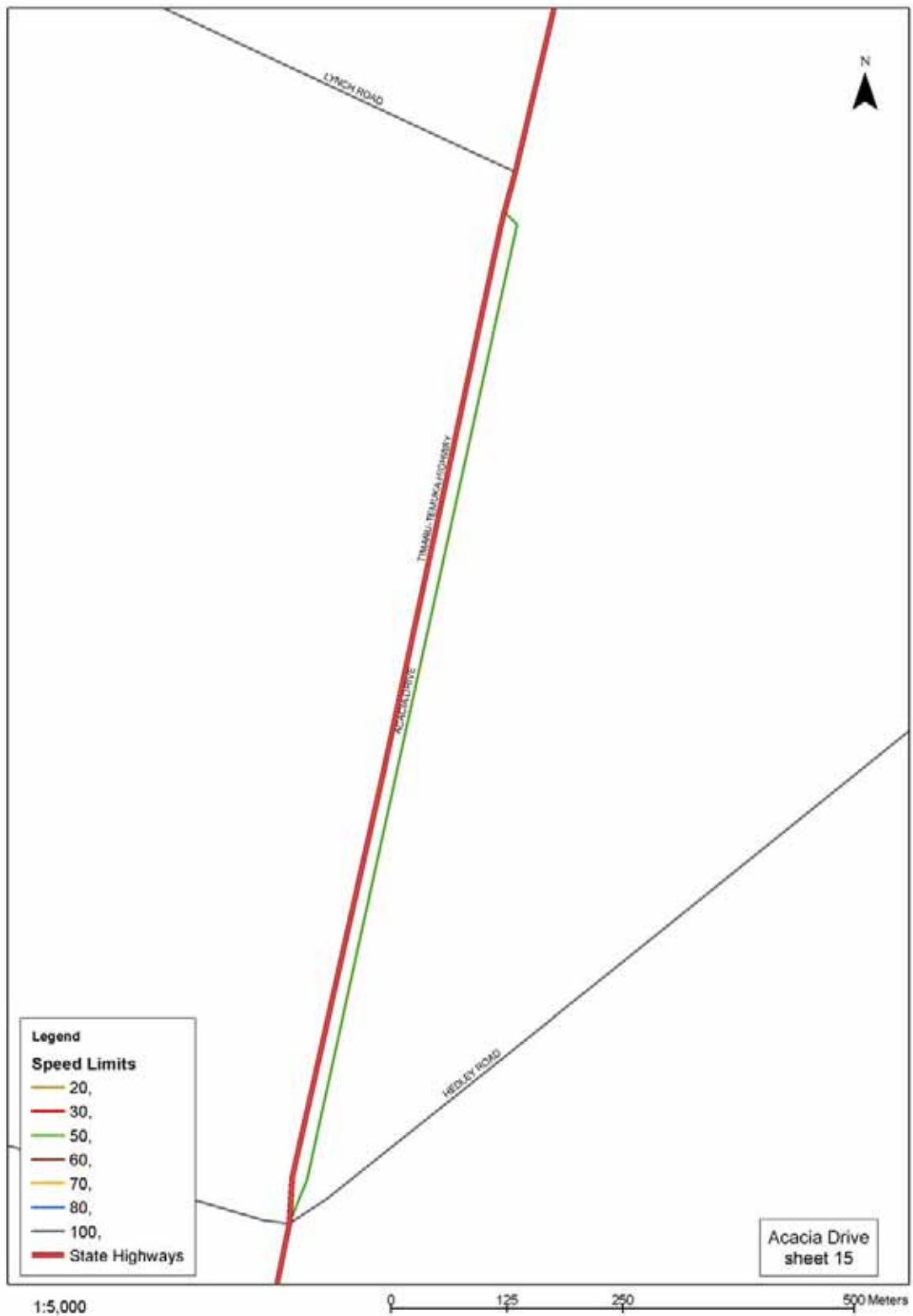
# CLANDEBOYE



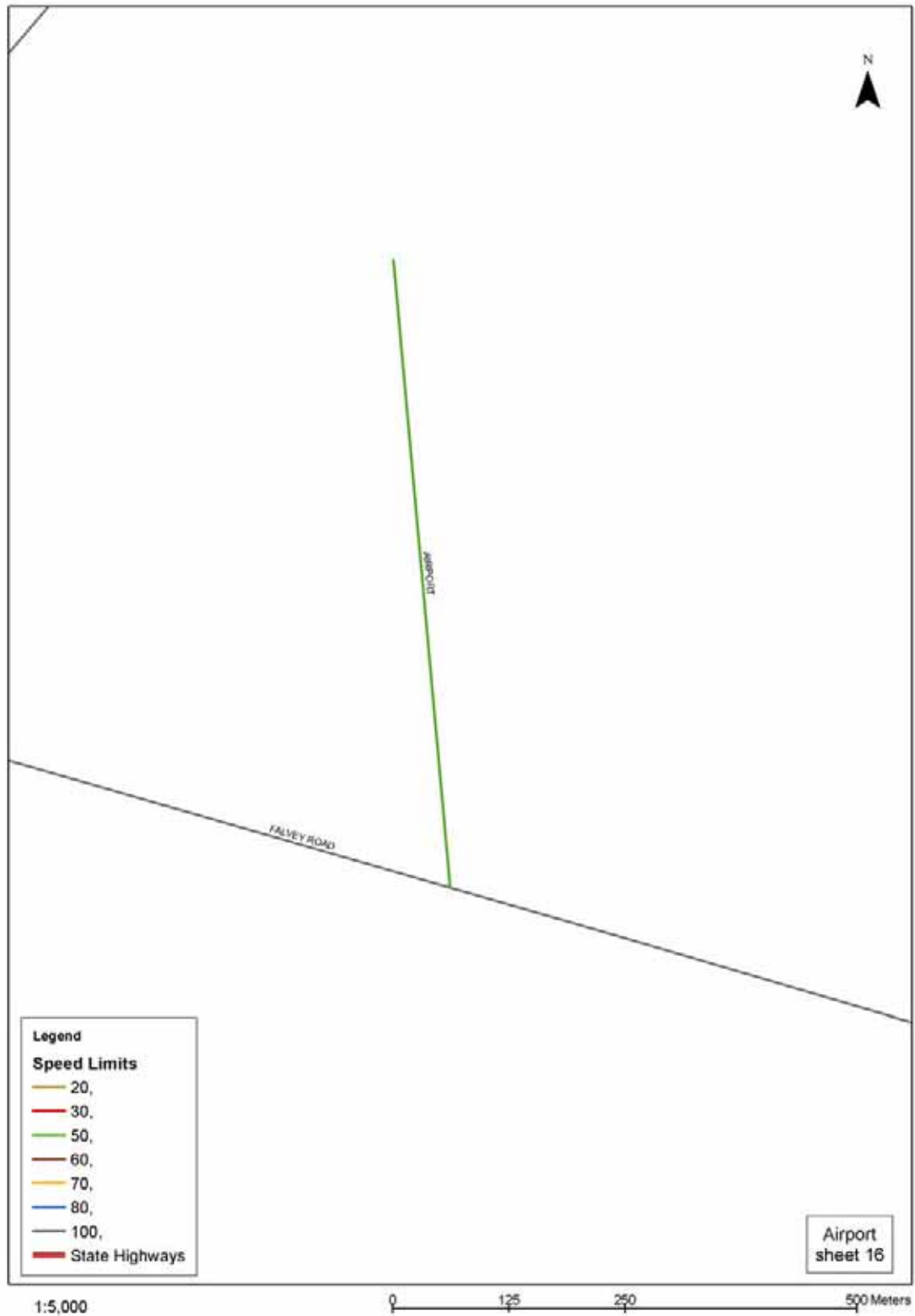
# WAIPOPO



## ACACIA DRIVE



# AIRPORT



# NORMANBY

