



Happy

Spot prizes for
the best dressed
kiwi hero
or heroine!

The Explorers Club
is nearly one year old!!!

To celebrate we want to have a
special session

from 3.30 - 5.30

On Friday
1st May!

Birthday

Join us for

Afternoon tea

Mystery objects

Treasure hunt

*Behind the scenes tour of
the weird and wacky*

Games



Please let us know if you think
you might be able to come
Phone 03 6877212



Perth St
PO Box 522
Timaru 7940
New Zealand

Telephone (03) 687 7212
Facsimile (03) 687 7215
museum@timdc.govt.nz
www.timaru.govt.nz/museum





At our geology session in March we looked at how different types of rock make up our landscape and how different rocks are used by people.

In this photo some of the Explorers are doing the puzzle on rock types in the South Island.

It was also fascinating to look at the different types of rocks up close through the microscopes.

Why was the birthday cake as hard as a rock?

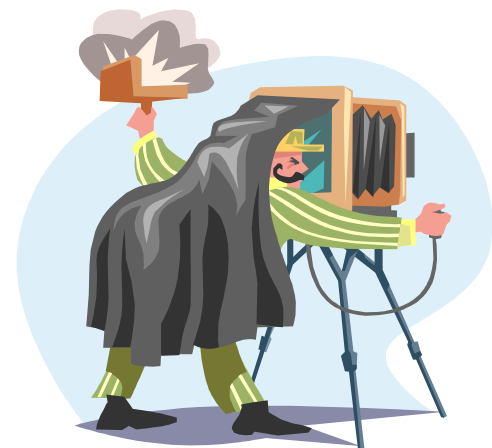
Because it was a marble cake

Weird and wacky quiz

- 1 What is a stomacher?
- 2 What is the longest snake?
- 3 What is an tintype?
- 4 Who invented the celestial globe?
- 5 What is kava?
- 6 What did the ancient Egyptians write on?
- 7 What produces the largest egg?
- 8 What is an olbolle?
- 9 What is ikat?
- 10 What mammal lays eggs?

Bring your answers to the birthday party on the 1st May for a spot prize and see related artefacts on the museum tour

Another date for your diary Sunday 17 May is International Museums Day. Local high schools will be giving performances and there will also be tours behind the scenes at the South Canterbury Museum.



Explore old cameras and photographs
on Tuesday 26 May 3.30 - 4.30
at the
South Canterbury Museum



Does a pink candle burn longer than a blue one?

No they both burn shorter!