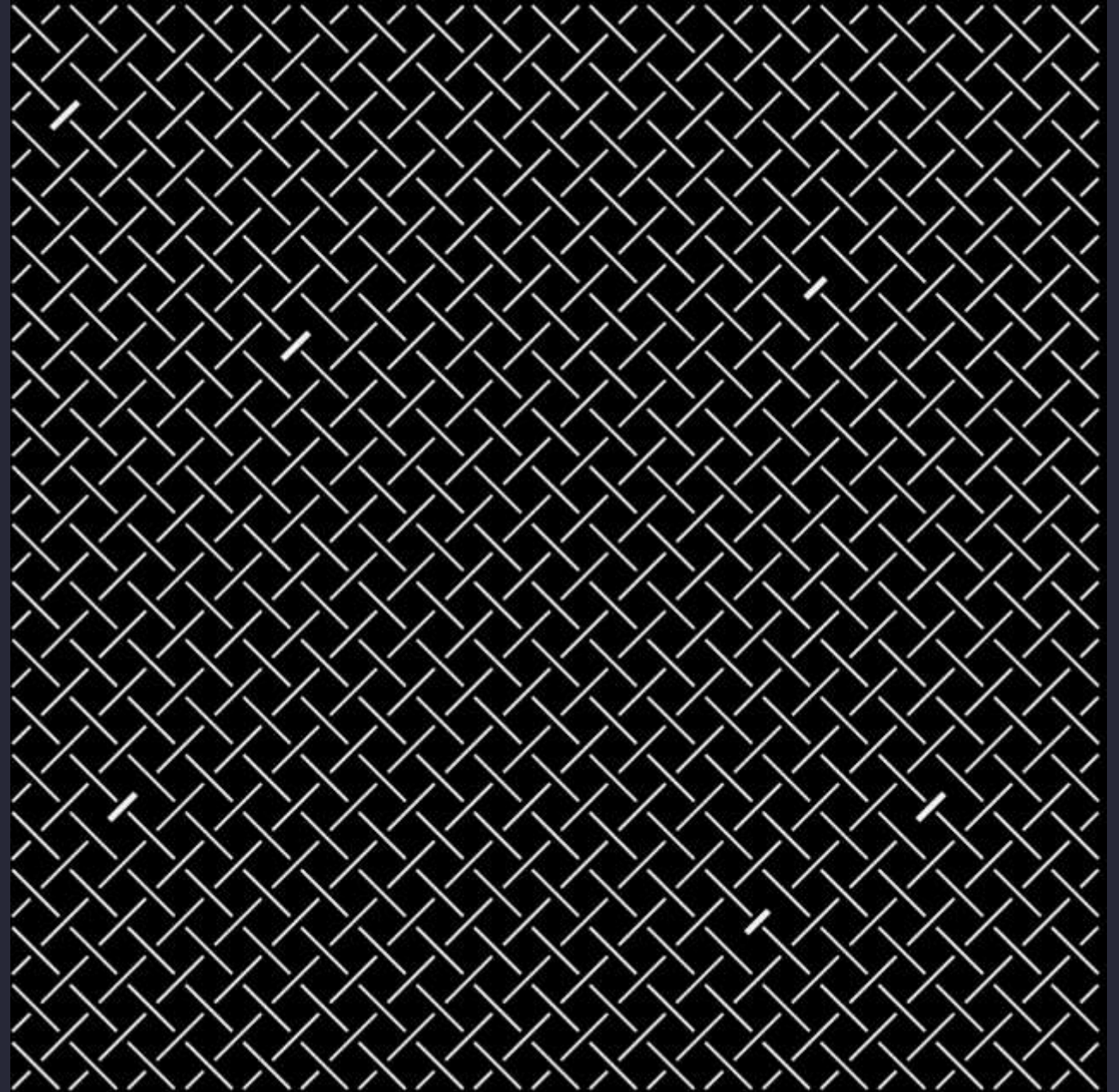


# Timaru citytown TRIALS PRIORITISATION

Elected Members Workshop.  
16 August 2022.



# Citytown trials snapshot

CityTown Strategic Framework guides trial selection and prioritisation.

A 'mix' of exploratory and targeted trials will inform where to focus the Master Plan and future investment.

Two trials completed, others have momentum through design phase, and support from stakeholders.





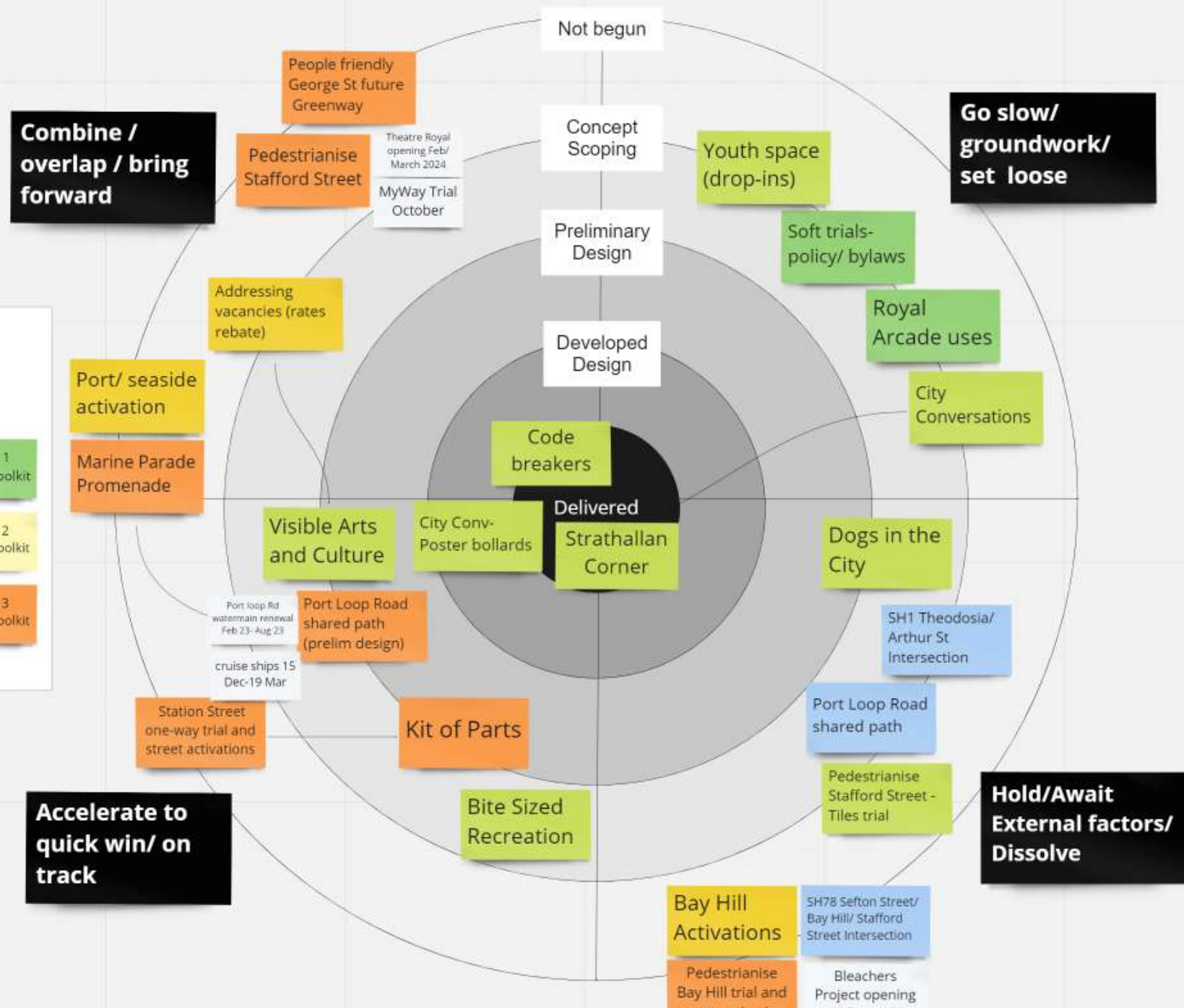
# Trials prioritisation

## 'bullseye'

Participatory design is our process to bring trials closer to the target.

Gateways at each design phase test viability and purpose.

Criteria are used to help assess and prioritise into quadrants.





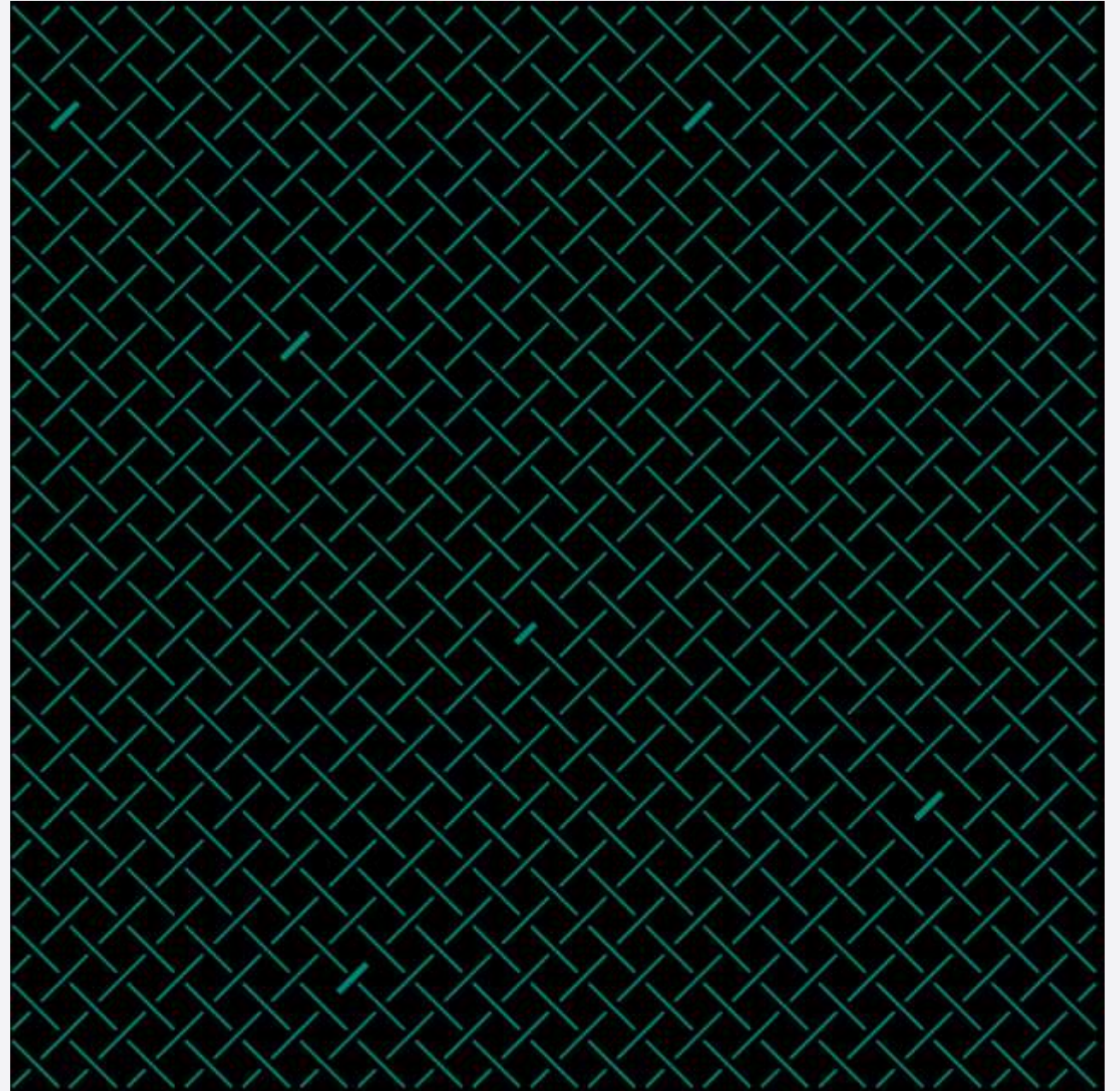
# Trials Prioritisation criteria

# Prioritisation criteria

## investment

Investment objectives and benefits:

- Geographical/spatial mix
- Deliver against CityTown Outcomes
- Deliver against CityTown Key moves
- Attract in-kind funding or support
- Test private investment attractors
- De-risk future permanent spend

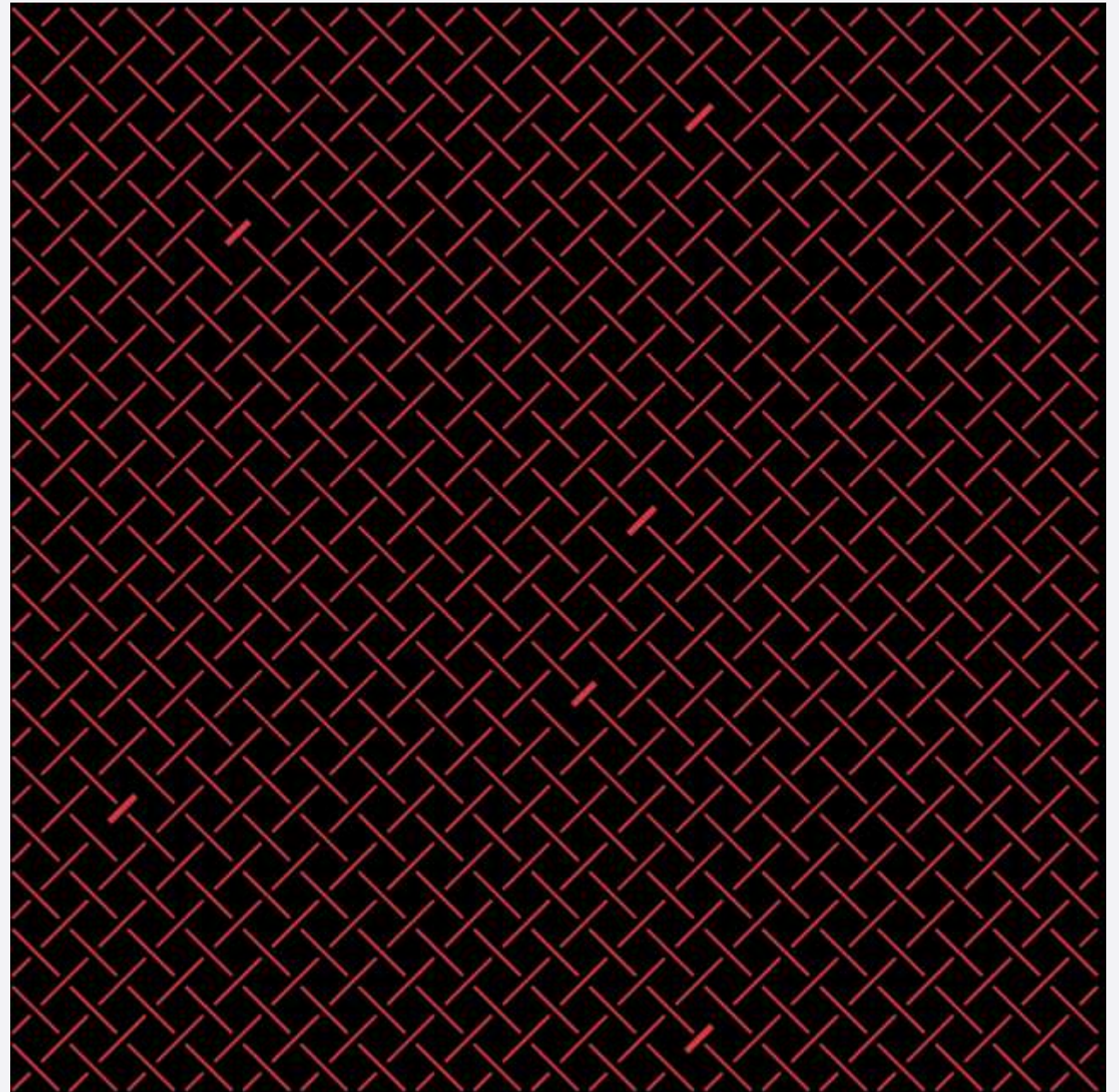


# Prioritisation criteria

## dependencies

Critical success factors/dependencies:

- Co-ordinated with projects, renewals, events
- Does not replicate/compete with other offerings
- Effectiveness with minimal disruption
- Cost efficiency and match effort
- Dependency with other trials
- Business enthusiasm/participation during scoping
- Neighbour/stakeholder views during scoping
- Extent of regulatory changes required
- Supports balanced demographic
- Supports community/business to sustain activity
- Ability to fit in seasonal window/suitable duration

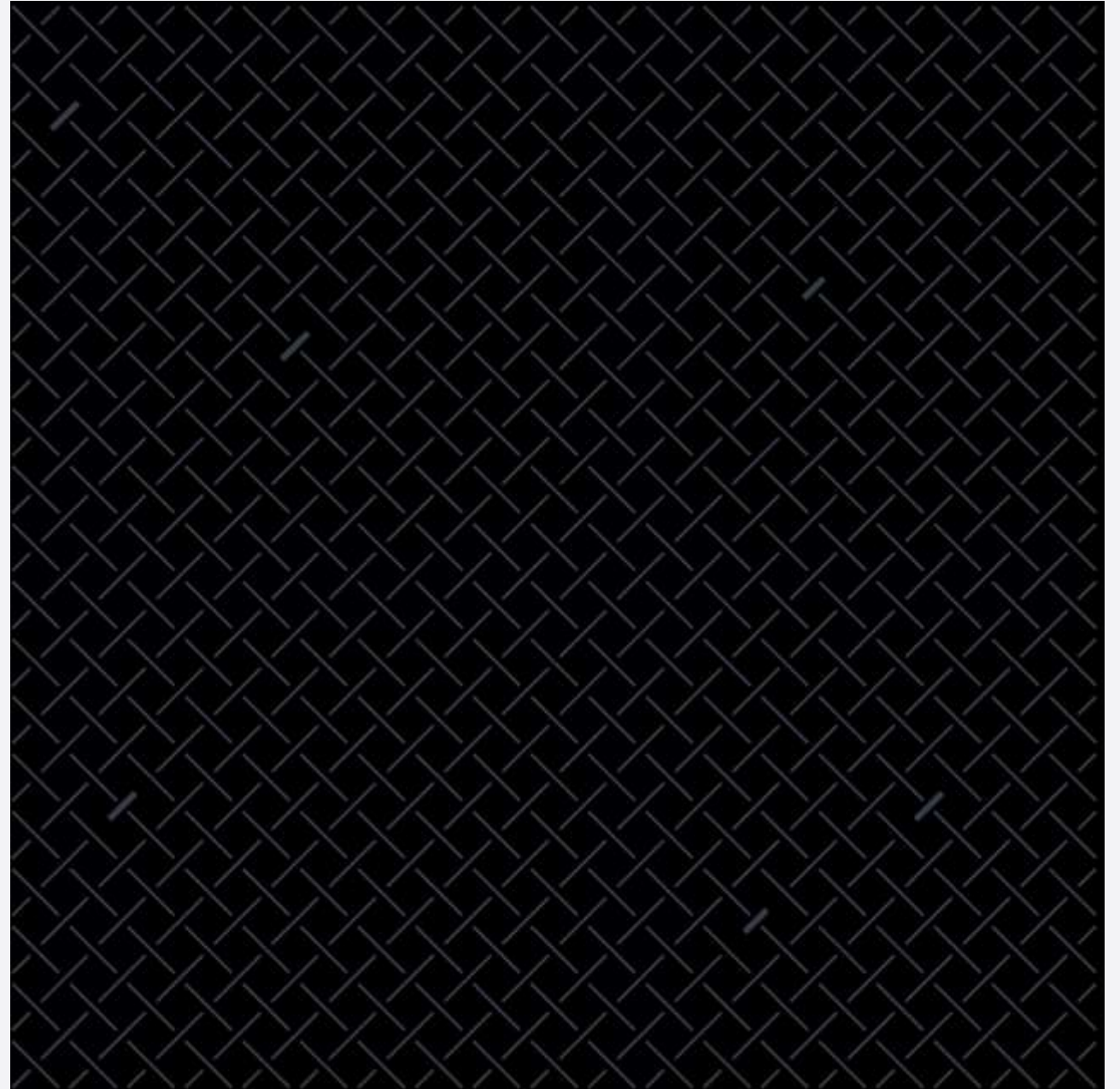


# Prioritisation criteria

## impact and insights

Enduring impact and useful insights:

- Ease of data capture/ability to measure outcomes
- Experiential consultation for wide audience
- Engages with unique features of Timaru
- Gain insights for public space and urban amenity
- Path to permanence and ability to influence built outcomes
- Improve safety, accessibility, convenience
- Encourages use of active modes
- Increase number of people in the city
- Opportunity to partner with mana whenua
- Multipronged approach that creates/requires collaboration







# Trials progress

# CITYTOWN TRIALS

## with momentum

- Codebreakers (completed)
- Visible Arts and Culture (First Fridays)
- Bite Sized Recreation
- City Conversations
- Kit of Parts (enabling)
- Port Loop Road shared path
- Dogs in the City Trial





# exploratory trials

## First Fridays

Working with support from:

- Kimble Henderson/ Aidan Theatre
- Michael Armstrong
- Maania Tealei Photography
- Hamish Pettengell/Aigantighe
- Alive Vibrant Timaru
- Eight artists/bands/musicians/performers (to date)
- Nine local business owners (to date)

Conversations with so far with:

- 16 artists and performers
- 12 businesses
- 6 institutions

And more contacted but not met with yet



# exploratory TRIALS

## BITE SIZED REC

Working with support from:

- TDC LTU
- TDC Parks
- Artisan Farmer's Market
- Te Ana Māori Rock Art Centre
- Millie Rose Boutique
- Soul Surf Skate
- Frontrunner
- Bar Athletics
- Basketball NZ
- Two central city building owners
- And a few other conversations underway.



# Enabling trial

## Kit of parts

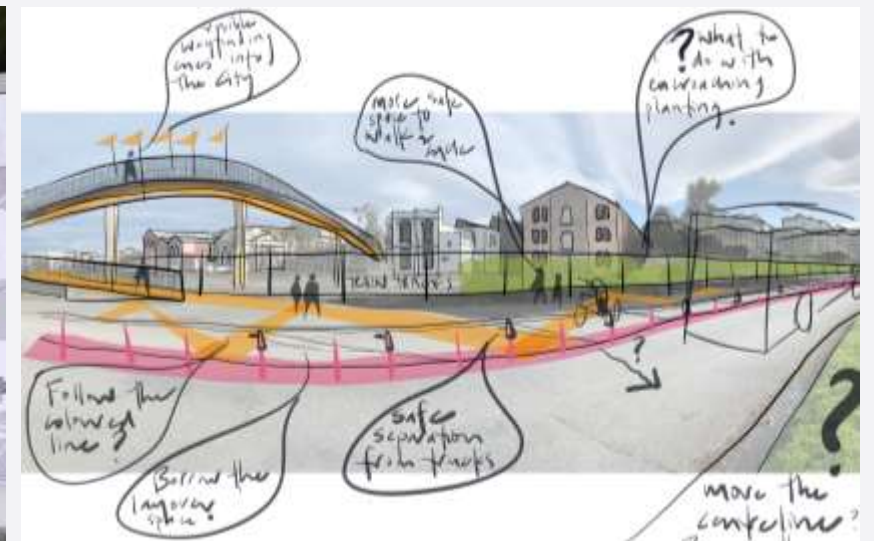
- Suite of temporary elements
- Efficiency for other trials.
- Moving furniture around city as living room.
- Typologies for transportation
- Typologies for activation
- Dependent on duration of trial.
- Allocation of road space for walking and cycling.
- Test new ways to use a space.
- Recognisable with opportunity to customise.
- Wayfinding e.g. cruise ships.



# Targeted trials

## Port loop road

- Key move: Coastal Connection
- Draw walkers and cyclists into the urban centre from Caroline Bay and coastal trails
- Aligned with Streets for People Application to Waka Kotahi
- Watermain renewal – aligned with programme for permanent works
- Cruise ships arrive December to March
- Triggers Station Street activation and Marine Parade promenade trials.
- Conversations with major stakeholders has begun.





# Updated trials programme

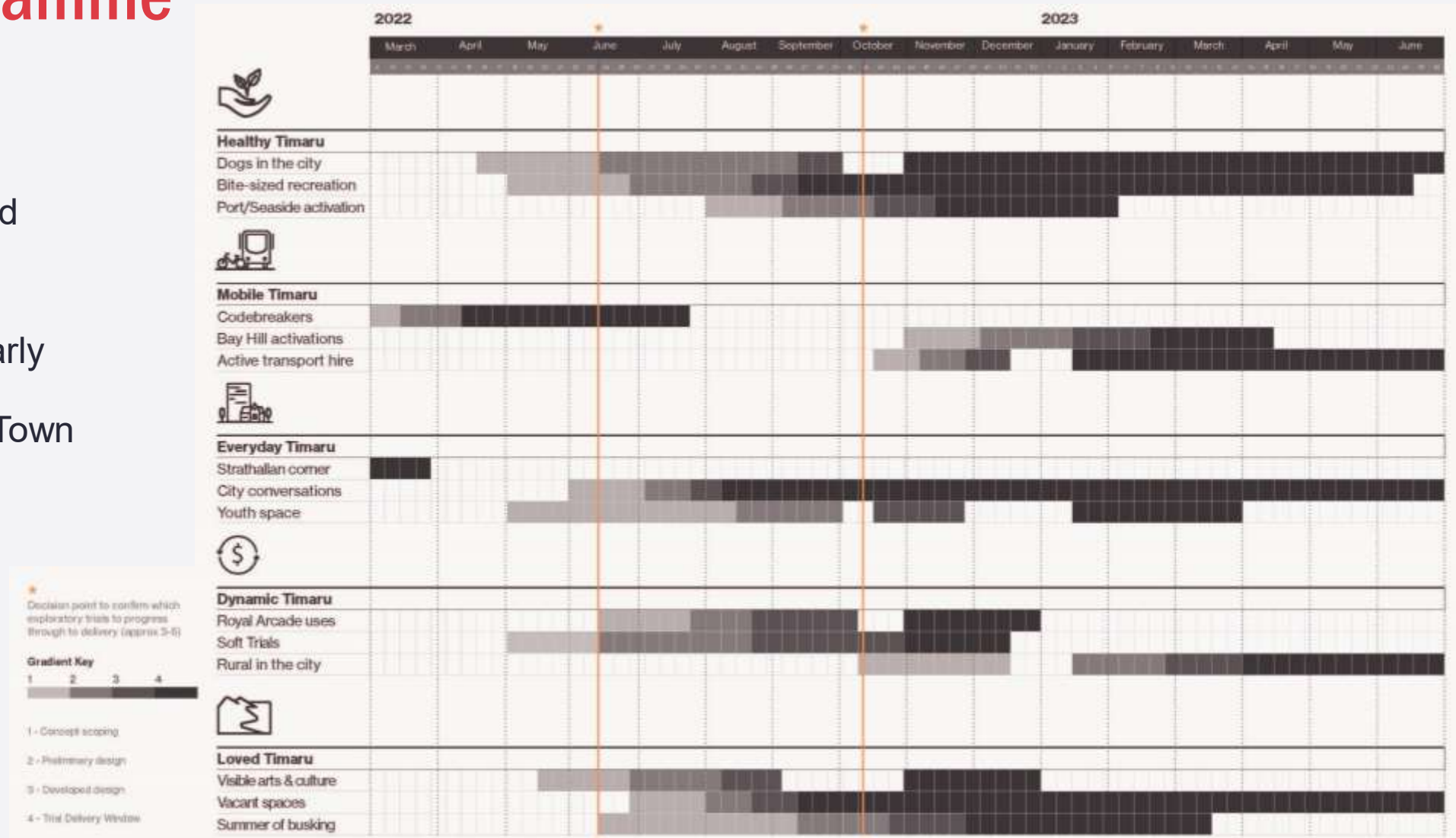


# Exploratory trials

## Revised programme

Not all trials will proceed through to delivery.

They will first be tested through scoping and early design, with input and feedback from the CityTown Project Team.



# targeted trials

## Revised programme



	Number on map	Overlap with exploratory trials	Pedestrian-friendly Streets by people focused	Event street activation	Tactical intervention
<b>OTHER</b>					
Supporting all trials					
Kit of parts	0	●	●	●	●
<b>GREEN WEAVE</b>					
Address State Highway barrier/crossings					
SH1 Theodosia St /Arthur St	1		●		
SH7B Selton St/Bay Hill Inter	2		●		●
Pull green into the centre					
Strathalan Street Greenway	3	●			●
Station Street Greenway	4	●			●
George Street Greenway	5	●			●
<b>COASTLINE CONNECTION</b>					
Get us to the water					
Port Loop Road shared path	6	●	●		
Create a waterfront experience					
Marine Parade Promenade	7	●			
<b>WELCOME HOME</b>					
Support finer grain retail					
Pedestrian-friendly laneways	8	●		●	
Improve mobility in the centre					
Pedestrian focused Stafford Street trials	9				●
<b>THE HEART WITHIN</b>					
Enhance vibrant streets & open spaces					
Station Street - one way trial and street activation	10	●		●	
Pedestrianise Bay Hill & Street activation	11	●		●	

	2022			2023		
	July - September	October - December		January - March	April - June	
<b>OTHER</b>						
Supporting all trials						
<b>GREEN WEAVE</b>						
Address State Highway barrier/crossings						
			X X		X X X X	
Pull green into the centre						
			X X X		X X X X X X X X	
<b>COASTLINE CONNECTION</b>						
Get us to the water						
		X X X X X X				
Create a waterfront experience						
		X X X				
<b>WELCOME HOME</b>						
Support finer grain retail						
					X X X	
Improve mobility in the centre						
		X X X				
<b>THE HEART WITHIN</b>						
Enhance vibrant streets & open spaces						
		X X X				
		X X X X X X X X				

# Targeted trials

## Dependencies

### Bundle one dependencies

- Watermain renewal 2023
- Streets for people –Waka Kotahi
- Cruise ships - December 22- March 23
- Theatre Royal – demo works early 2023

### Bundle two dependencies

- Theatre Royal works
- Farmers Market- Christmas

### Bundle three dependencies

- Streets for People- Waka Kotahi
- Ara and Kāinga Ora development
- After Bleachers opening and Christmas events in the Bay
- After MyWay spring trial

### Bundle four dependencies

- Trial may reshape dependent on first three bundles

bundle one- Dec/ Jan 22	Port Loop Road shared path	Station Street one way trial	Marine Parade Promenade	
bundle 2 Jan-Mar 23	George St/ King George St greenway	Pedestrianise Stafford St (George St intersection/ south Stafford)		
bundle 3 Mar-May 2023	Theodosia/ North St/ Arthur Street intersection	Bay Hill/ SH78 Sefton/ North end Stafford St - intersection	Pedestrianise Bay Hill trial and activation	Pedestrianise Stafford St (BayHill intersection/ north Stafford)
bundle 4 May/June 2023  or replace	Pedestrianise Stafford St- Tiles trial	Beswick/Cains Terrace- people friendly laneways	Strathallan/ Church St greenway Or Station St greenway	

# Evidence and data

## Strathallan corner

Data collected via 'Inhabit Place' Public Life Survey, online and postbox survey, social media posts.

### Key findings:

- The current space serves quiet lunch eaters very well, they want to leave it as it is
- People seeking a place to socialise see more potential for activities, vendors, music, performance and youth here.
- Toilets are needed in a central location, they are convenient but need and an upgrade with better accessibility.





# Masterplan delivery

# Outcomes summary



## HEALTHY TIMARU TE TAIAO HEI WHAKAMARU

**A regenerated natural environment supported by our role as kaitiaki.**

**Objectives:**

- Regenerate our natural environment.
- Adopt sustainable practices to reduce environmental impact.
- Raise climate and environmental awareness.



## LOVED TIMARU KO AU, KO KOE, KO TĀTOU

**A visible and celebrated identity fostering Timaruvians' sense of pride and belonging.**

**Objectives:**

- Express our bi-cultural identity.
- Celebrate our natural and built heritage.
- Strengthen our community's sense of pride and belonging.



## MOBILE TIMARU TE ARA ĀHEITANGA

**A sustainable and inclusive mobility system offering transport choices to all.**

**Objectives:**

- Create a better pedestrian experience.
- Increase the number of people cycling and using micro-mobility.
- Increase public transport patronage.
- Support our elderly and mobility impaired citizens in accessing the centre.
- Reduce dominance of cars in the centre.



## DYNAMIC TIMARU ŌHANGA TAINIKE

**A resilient local economy ensuring long-lasting vibrancy and vitality of the centre.**

**Objectives:**

- Reinforce retail and commercial activities.
- Develop tourism and recreational opportunities.
- Align public and private investments and initiatives.



## EVERYDAY TIMARU HE WĀHI ORA

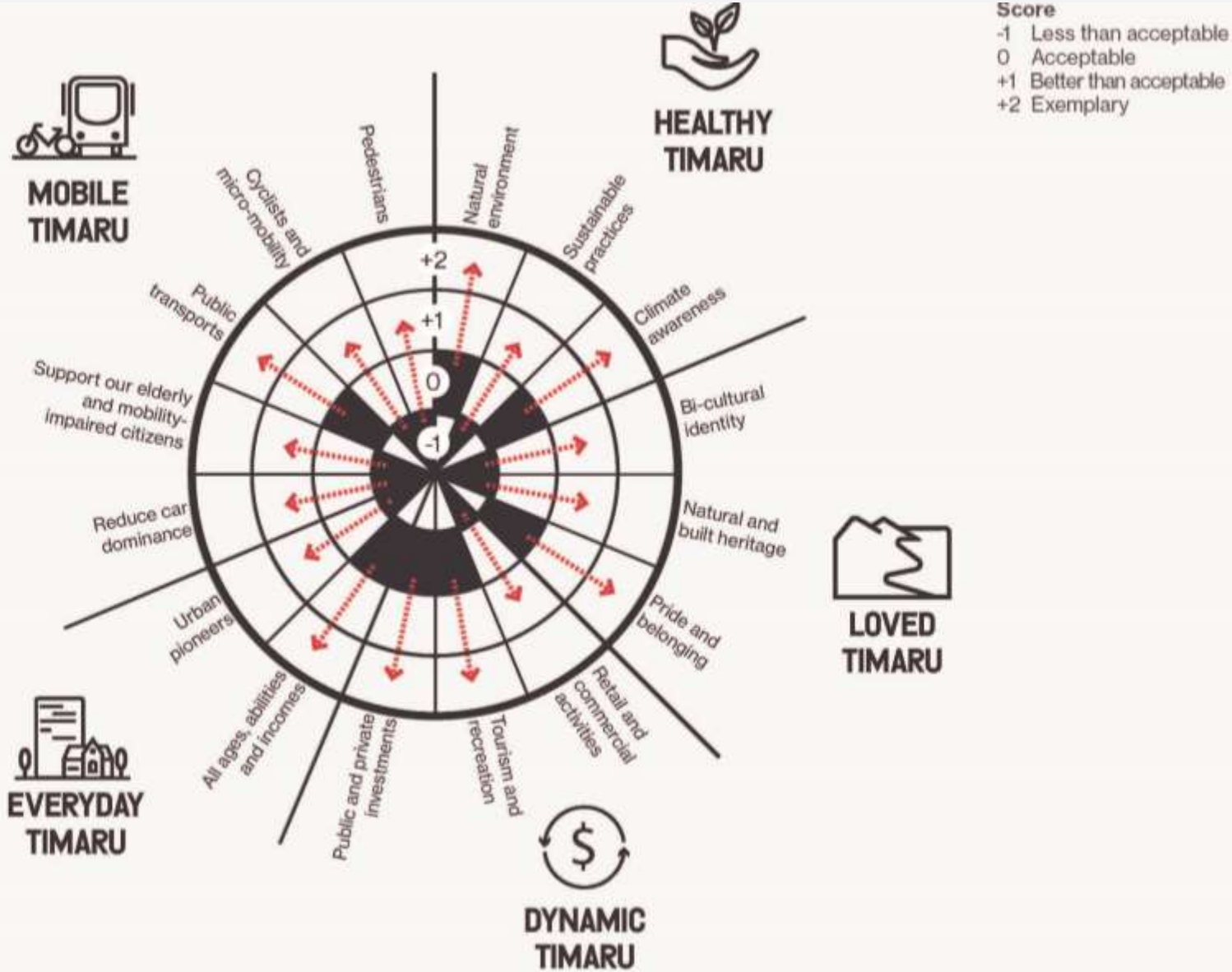
**A diverse and mixed-use centre responding to the needs of our communities that also attracts urban pioneers.**

**Objectives:**

- Attract urban pioneers to consolidate a residential population in the centre.
- Provide for all ages, abilities and incomes.

# Outcomes

# Impact compass

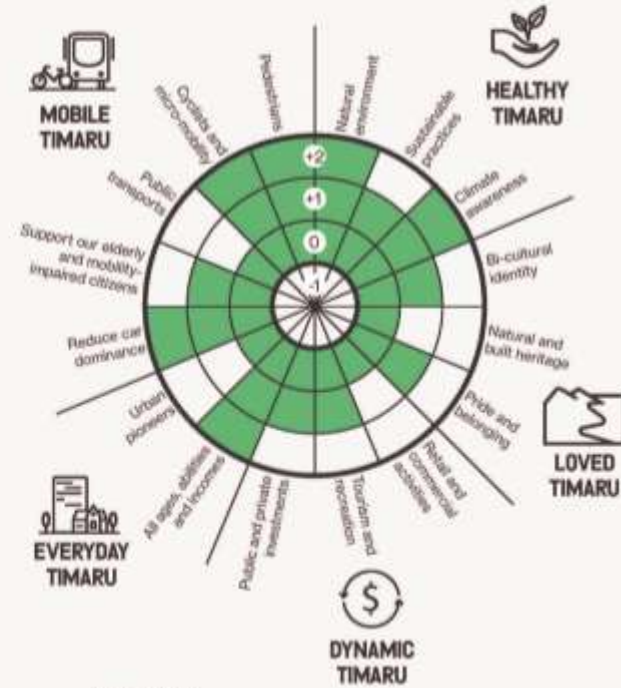


# GREEN WEAVE TE RARANGA A TANE



## EMBRACE THE CENTRE WITH GREENWAYS

Join and grow the existing network of open spaces to create a soft and inviting green frame around the centre.



## IDEAS

**Address SH1 barrier between the centre and wider Timaru.**

- Create gateways that pull / welcome people into the centre
- Improve cycle and walking routes connecting to the centre.
- Upgrade intersections for active and vulnerable users.
- Implement pedestrian and cycle wayfinding

**Pull green into the centre – forming a continuous network of open spaces.**

- Enhance the parkland habitat and green gathering spaces
- Upgrade greenway streets in valleys
- Introduce stormwater management and rain gardens
- Slow speed environment for shared users



# COASTLINE CONNECTION ĀRAI TE URU



## LINK TO THE WATER EDGE & ORIGINAL SHORELINE

Reconnect with the water edge and celebrate its dual character – both natural and industrious.



## IDEAS

### Get us to the water.

- Upgrade and build new pedestrian and cycle bridges and crossings
- Upgrade the piazza as one of several designed features connecting Caroline Bay and the centre
- Implement wayfinding between centre and coast as well as for coastal trails
- Create a play trail from C-play to centre

### Create a complete waterfront experience.

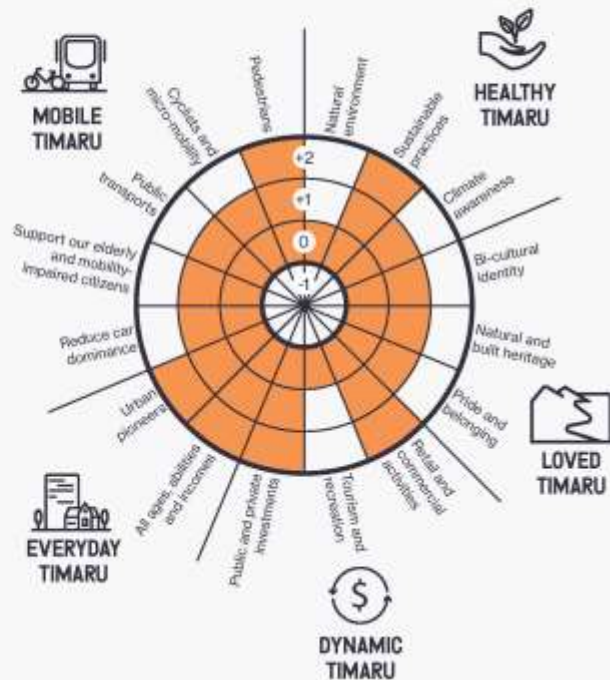
- Enhance promenades for walking, cycling, seating and viewing
- Allow for food offerings
- Cater for bike, kayak, boating, swimming; water and waterfront activities
- Upgrade or relocate freedom camping facilities
- Protect and enhance the existing penguin habitats

# WELCOME HOME HOKI MAI



## ENABLE MIXED-USE TO INVITE URBAN LIVING

Introduce a mix and diversity of live-work opportunities in the centre to sustain vibrancy over the coming years.



## IDEAS

### Unlock residential opportunities.

- Pilot residential at ground floor & live/work opportunities
- Special 'amenity' typologies
- Area of influence for inner CityTown residential types

### Enable reuse of character and heritage buildings.

- Support EPB strengthening and adaptive reuse (EPB toolkit)
- Landmark buildings – priority conversion projects

### Support finer grain retail.

- Enhance existing laneways
- Explore mid-block connections
- Encourage independent retail
- Activation and pop-up solutions in vacant shops
- Enable the Royal Arcade's mixed use/adaptive re-use

### Improve mobility in the centre.

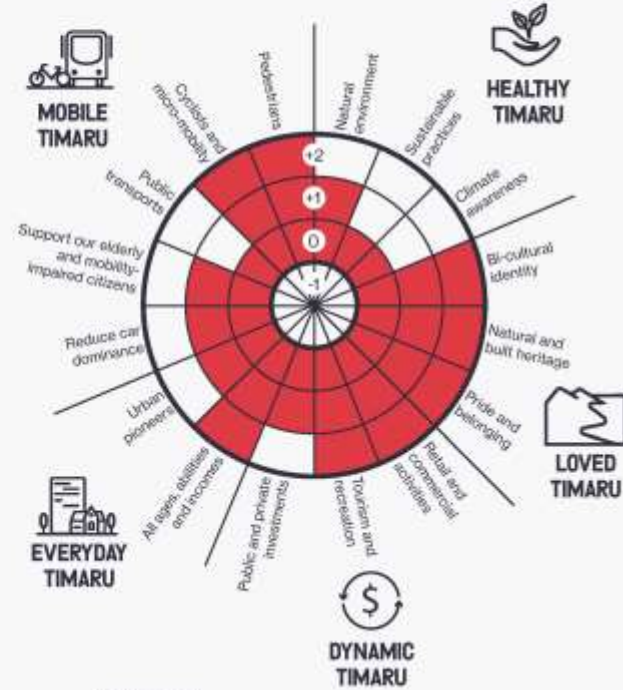
- Enable MyWay route and stops
- Utilise off-street carparking + wayfinding
- Potential future passenger rail and transport hub.
- Reduce the number of on-street carparks and increase cost

# THE HEART WITHIN TE NGĀKAU A IWI



## CULTIVATE A STRONG CULTURAL CORE

Amplify the beating heart of our centre within a cultural quarter framed by civic buildings.



## IDEAS

### Enhance vibrant streets and open spaces.

- Concentrate nightlife activity and outdoor dining
- Grow market along the street and create urban play streets
- Potential one-way or pedestrian street to free up more space. Could consider dynamic on-street carparking (restricted to periods of day or week)
- All weather facilities
- New and greener outdoor public spaces

### Strengthen cultural and civic anchors.

- Catalyst developments: Food, Art and culture experience within the heart
- Pop-up / permanent creative community space (library, te ara, gallery etc) and/or potential youth space
- Potential enterprise market hall 'all under one roof'



# Delivery tactics

# DELIVERY TACTICS

A 30 to 50 year plan would be typical of infrastructure planning and this timescale is represented by the full suite of project ideas which would comprehensively address the four Key Moves to fully deliver stakeholder aspirations.

The Delivery Tactics on the following pages showcase hypothetical scenarios that indicate the scope and scale of what might be achievable within the 10 year CAPEX budget. It is recognised that a random selection of popular projects would not optimise value for ratepayers and these scenarios give examples of how complementary projects could be differently packaged together in the evolving Master Plan to best promote the agreed Outcomes.

The Delivery Tactics are indicative at this stage in order to initiate the conversation with our community about strategic prioritisation and early wins.



# DELIVERY TACTICS - SCENARIO 1

## CONNECTOR AS CATALYST

Prioritise delivery of one key move. For example, delivering 'Coastal Connection' would prioritise projects like footbridges, connections to Caroline Bay and development of Marine Parade promenade.

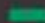

### Pros

- Links up key projects by TDC and others
- Addresses severance issues
- Range of potential partnerships for key anchor projects
- Links and encourages new travel modes
- Access to the water

### Cons

- Incomplete networks for cyclists and pedestrians
- Less focus on the centre

### Key

-  Greenway frame
-  Port/water connection
-  Future and potential developments



# DELIVERY TACTICS - SCENARIO 2

## LEVERAGE THE LANEWAYS

Focus ideas on a specific location. For example, delivering within a concentrated geographical area will enable delivery of ideas across all four key moves.

### Pros

- Consolidate activity
- Double down on existing investments
- Range of potential project partnerships
- Low cost/ low hanging fruit
- Focus on seed developments
- Upgrades a portion of Stafford St.
- Tests if the key moves deliver in a localised area - giving confidence that if done in other places it could achieve the overarching vision

### Cons

- Incomplete networks for cyclists and pedestrians
- Stretches council's enable role
- Could mean existing issues are not dealt to soon enough.

### Key

-  Small greenway frame
-  Low cost cycle connection
-  Activated laneways
-  Future and potential developments



# DELIVERY TACTICS - SCENARIO 3

## LINE IT ALL UP

Align projects with renewals budgets, LTP key projects and other funding sources. For example, deliver the Shoreline Greenway early because TDC have a water main renewal programmed.

### Pros

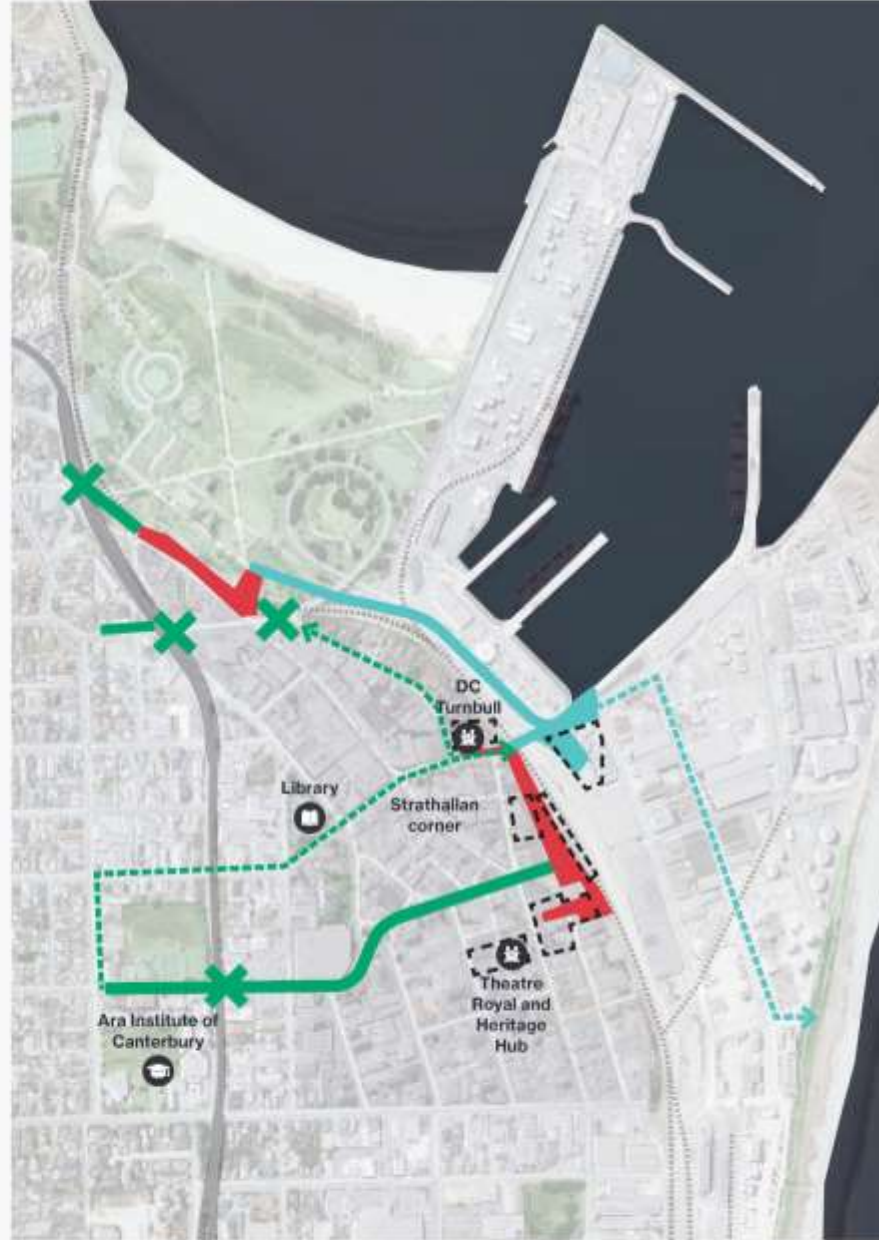
- Aligns with renewals and BAU improvement projects
- Street potential for connecting pedestrian and cyclists safely
- Continues to leverage tactical approach
- Addresses major severance issues
- Slows traffic speeds.

### Cons

- Lack of consolidated activity
- Temporary or low cost may not generate sufficient investor confidence or amenity for growth and density
- Relies on ongoing activation/tactical programme

**Key**

-  Crossings to be upgraded
-  Intermittent greenway treatment
-  Full greenway transport
-  Low cost water edge connections
-  Water edge connections
-  Road alternative uses (market and events/activations)
-  Future and potential developments





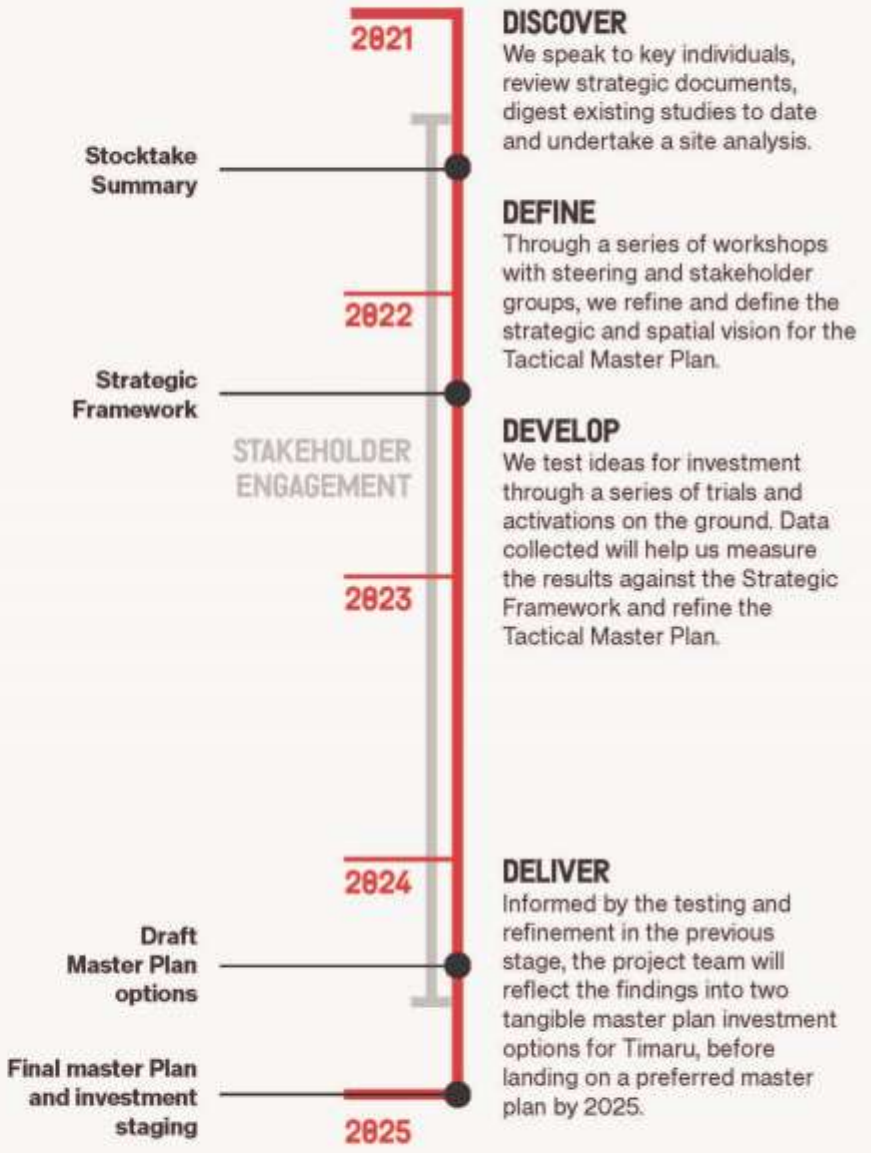
# THE TACTICAL MASTER PLAN

**First phase**  
A collaborative design process to develop the Strategic Framework: a shared vision and desired outcomes, with key moves to achieve the vision.

**Next phase**  
Test and refine the outcomes and key moves through trials. This will help ensure that any future big-ticket items are functional, attractive and well-utilised by Timaruvians now and in the future.

Our two advisory groups will merge into one and continue to provide feedback throughout this trial and refinement phase.

**Some** of the key move ideas will be translated into concrete actions and implemented, informed by trials and ongoing feedback.



# Process timeline

