

TIMARU DISTRICT SIGNIFICANT NATURAL AREAS

ROADSIDE SNA SURVEY 2022

SNA 948

Road: Rangatira Valley Road

Side of Road: south

Map Reference (NZTM): 1455476E-5105702N

Ecological District: Low Plains

Nearest Locality: Waitohi

Adjacent Property: 24680-01000

Size: 5m²

Level IV Land Environment: L1.2b



Description:

Two ti/cabbage trees (*Cordyline australis*): one moderate-sized single-trunk tree at the map location; and a smaller tree further west along the road. Both trees are in rank (un-grazed) exotic grassland dominated by cocksfoot (*Dactylis glomerata*). A large hawthorn (*Crataegus monogyna*) tree is present adjacent to the larger cabbage tree. Also present there are bracken (*Pteridium esculentum*) and tree lupin (*Lupinus arboreus*).

Notable Species:

No listed 'at risk' or 'threatened' species were observed. Cabbage trees are now rare in the Low Plains Ecological District.



The eastern larger cabbage tree.

Significance Assessment:

Assessment against Canterbury Regional Policy Statement Appendix 3 criteria:

Criteria	Rank	Assessment
Representativeness	M	1. A degraded example of indigenous vegetation, representing all that remains in this part of the ecological district.
Rarity/Distinctiveness	H	3. Indigenous vegetation/habitat that has been reduced to less than 20% of its former extent in the ecological district.
Diversity and Pattern	L	A very low diversity of indigenous ecosystems, habitat types, or taxa.
Ecological Context	L	Vegetation/habitat that does not provide or contribute to an important ecological linkage or buffering, and does not provide important habitat for indigenous species.

Assessment against Timaru District Plan Part B criteria:

Primary Criteria	Rank	Assessment
Representativeness	M	A depleted example of indigenous vegetation which is typical of that remaining in the ecological district.
Rarity	M	The area supports an indigenous species that is now rare in the ecological district.

Diversity and Pattern	L/M	A substantially depleted indigenous plant community.
Distinctiveness/Special Features	L	The area does not support species at distributional limits, intact sequences, or provide important fauna habitat.
Other Criteria		
Size/Shape	L	The area is small and poorly buffered.
Connectivity	L	The area is isolated from other areas of indigenous vegetation/habitat and does not form an important part of a network of fauna habitat.
Sustainability	M	The area is modified, but the indigenous vegetation (cabbage trees) is resilient.

The area is significant when assessed against the Canterbury Regional Policy Statement criteria, principally because it supports indigenous vegetation that has been reduced to less than 20% of its former extent in the ecological district.

Condition and Management:

The cabbage trees are in relatively good condition. The trees should be protected from stock damage and herbicide.

TIMARU DISTRICT SIGNIFICANT NATURAL AREAS

ROADSIDE SNA SURVEY 2022

SNA 950

Road: Rangitira Valley Road

Side of Road: south

Map Reference (NZTM): 1452527E-5105708N

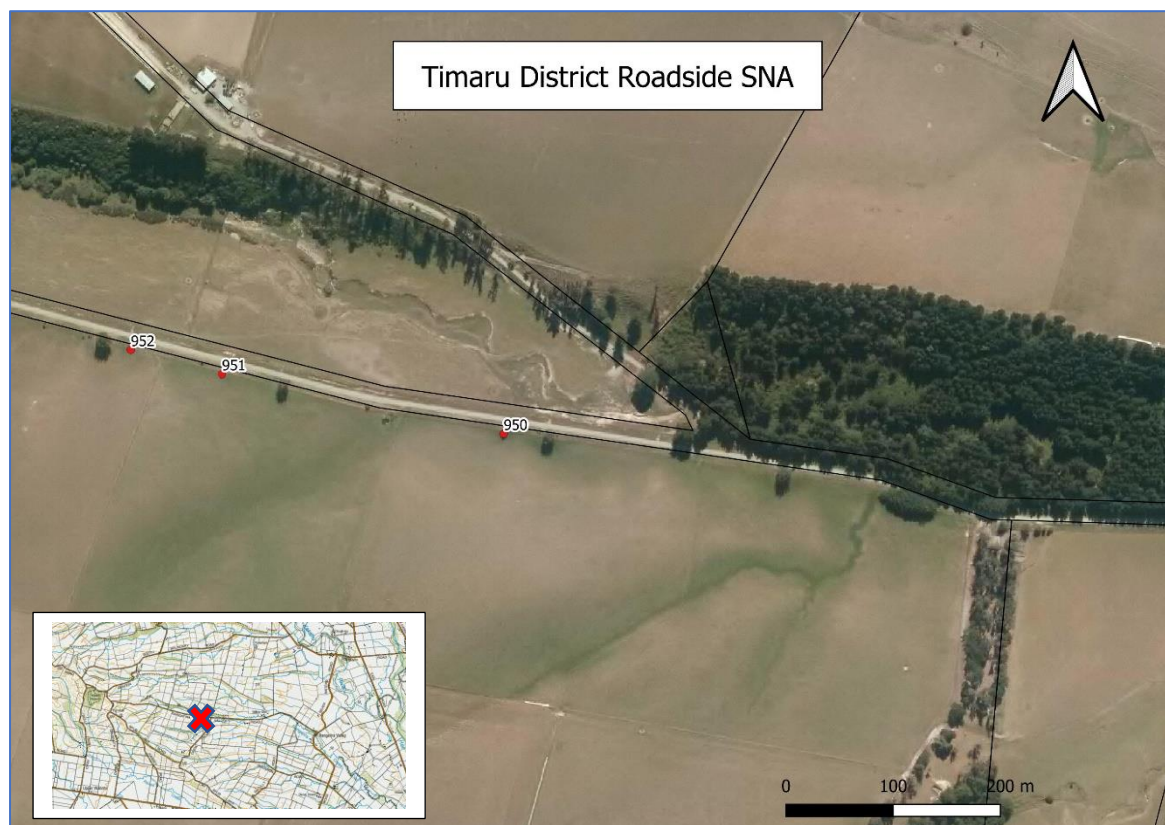
Ecological District: Geraldine

Nearest Locality: Waitohi

Adjacent Property: 24680-01500

Size: 5m²

Level IV Land Environment: N3.1a



Description:

One lowland ribbonwood tree (*Plagianthus regius*) in rank (un-grazed) exotic grassland, very close to the boundary fence. It is a young tree with a trunk diameter (at breast height) of 47.5cm. It is possible that the tree was originally planted. Scotch broom (*Cytisus scoparius*) and gorse (*Ulex europaeus*) are present nearby. A single ti/cabbage tree (*Cordyline australis*) is present further west along the road.

Notable Species:

No listed 'at risk' or 'threatened' species were observed. Lowland ribbonwood trees are rare in this part of the Geraldine Ecological District.



Lowland ribbonwood.

Significance Assessment:

Assessment against Canterbury Regional Policy Statement Appendix 3 criteria:

Criteria	Rank	Assessment
Representativeness	M	1. A degraded example of indigenous vegetation, representing all that remains in this part of the ecological district.
Rarity/Distinctiveness	H	3. Indigenous vegetation/habitat that has been reduced to less than 20% of its former extent in the ecological district.
Diversity and Pattern	L	A very low diversity of indigenous ecosystems, habitat types, or taxa.
Ecological Context	L	Vegetation/habitat that does not provide or contribute to an important ecological linkage or buffering, and does not provide important habitat for indigenous species.

Assessment against Timaru District Plan Part B criteria:

Primary Criteria	Rank	Assessment
Representativeness	M	A depleted example of indigenous vegetation which is typical of that remaining in the ecological district.
Rarity	M	The area supports an indigenous species that is now rare in this part of the ecological district.

Diversity and Pattern	L/M	A substantially depleted indigenous plant community.
Distinctiveness/Special Features	L	The area does not support species at distributional limits, intact sequences, or provide important fauna habitat.
Other Criteria		
Size/Shape	L	The area is small and poorly buffered.
Connectivity	L	The area is isolated from other areas of indigenous vegetation/habitat and does not form an important part of a network of fauna habitat.
Sustainability	M	The area is modified, but the indigenous vegetation (lowland ribbonwood tree) appears resilient.

The area is significant when assessed against the Canterbury Regional Policy Statement criteria, principally because it supports indigenous vegetation that has been reduced to less than 20% of its former extent in the ecological district.

Condition and Management:

The lowland ribbonwood tree is in good condition, except for some stock damage (bark-stripping) on the trunk. The tree should be protected from stock damage and herbicide.



Cabbage tree.

TIMARU DISTRICT SIGNIFICANT NATURAL AREAS

ROADSIDE SNA SURVEY 2022

SNA 951

Road: Rangatira Valley Road

Side of Road: south

Map Reference (NZTM): 1452272E-5105761N

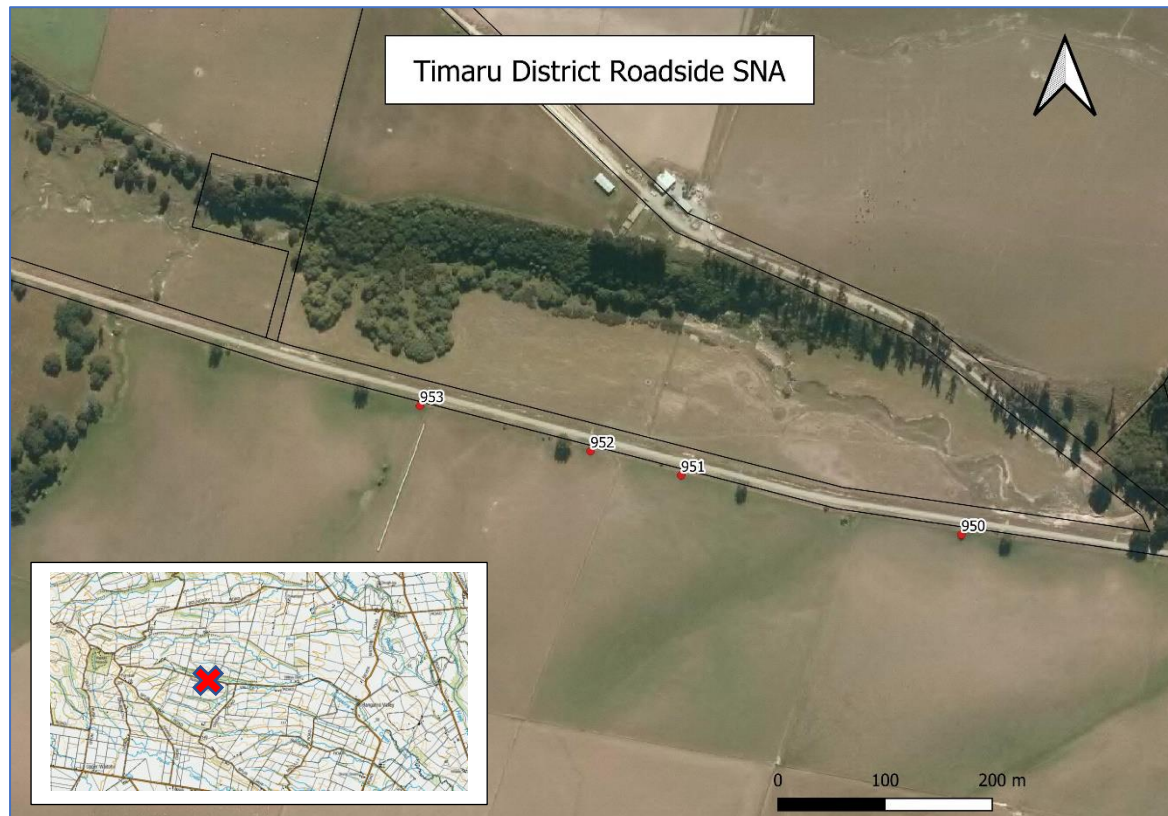
Ecological District: Geraldine

Nearest Locality: Waitohi

Adjacent Property: 24680-01500

Size: 5m²

Level IV Land Environment: N3.1a



Description:

One lowland ribbonwood tree (*Plagianthus regius*) in rank (un-grazed) exotic grassland, very close to the boundary fence. It is a young tree with a trunk diameter (at breast height) of 27cm. It is possible that the tree was originally planted. Gorse (*Ulex europaeus*) and blackberry (*Rubus fruticosus* agg.) are present nearby. A single ti/cabbage tree (*Cordyline australis*) is present approximately 30m west on the roadside.

Notable Species:

No listed 'at risk' or 'threatened' species were observed. Lowland ribbonwood trees are rare in this part of the Geraldine Ecological District.



Lowland ribbonwood.

Significance Assessment:

Assessment against Canterbury Regional Policy Statement Appendix 3 criteria:

Criteria	Rank	Assessment
Representativeness	M	1. A degraded example of indigenous vegetation, representing all that remains in this part of the ecological district.
Rarity/Distinctiveness	H	3. Indigenous vegetation/habitat that has been reduced to less than 20% of its former extent in the ecological district.
Diversity and Pattern	L	A very low diversity of indigenous ecosystems, habitat types, or taxa.
Ecological Context	L	Vegetation/habitat that does not provide or contribute to an important ecological linkage or buffering, and does not provide important habitat for indigenous species.

Assessment against Timaru District Plan Part B criteria:

Primary Criteria	Rank	Assessment
Representativeness	M	A depleted example of indigenous vegetation which is typical of that remaining in the ecological district.
Rarity	M	The area supports an indigenous species that is now rare in this part of the ecological district.

Diversity and Pattern	L/M	A substantially depleted indigenous plant community.
Distinctiveness/Special Features	L	The area does not support species at distributional limits, intact sequences, or provide important fauna habitat.
Other Criteria		
Size/Shape	L	The area is small and poorly buffered.
Connectivity	L	The area is isolated from other areas of indigenous vegetation/habitat and does not form an important part of a network of fauna habitat.
Sustainability	M	The area is modified, but the indigenous vegetation (lowland ribbonwood and cabbage tree) appear resilient.

The area is significant when assessed against the Canterbury Regional Policy Statement criteria, principally because it supports indigenous vegetation that has been reduced to less than 20% of its former extent in the ecological district.

Condition and Management:

The lowland ribbonwood tree is in good condition, except for some stock damage (bark-stripping) on the trunk. The tree should be protected from stock damage and herbicide.



Cabbage tree.

TIMARU DISTRICT SIGNIFICANT NATURAL AREAS

ROADSIDE SNA SURVEY 2022

SNA 952

Road: Rangatira Valley Road

Side of Road: south

Map Reference (NZTM): 1452189E-5105783N

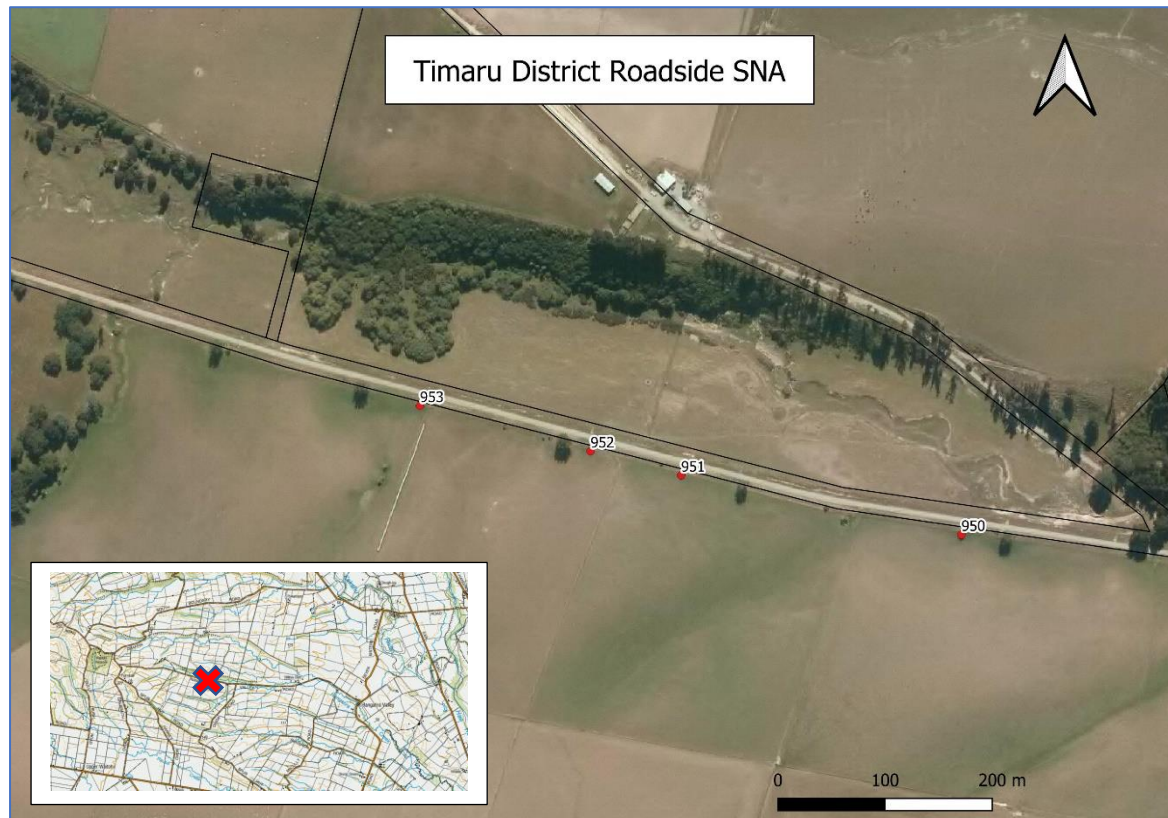
Ecological District: Geraldine

Nearest Locality: Waitohi

Adjacent Property: 24680-01500

Size: 5m²

Level IV Land Environment: N3.1a



Description:

One lowland ribbonwood tree (*Plagianthus regius*) in rank (un-grazed) exotic grassland, very close to the boundary fence. It is a young tree with a trunk diameter (at breast height) of 22cm. Two small ti/cabbage trees (*Cordyline australis*) are present approximately 100m west on the roadside. The tree has possibly been planted.

Notable Species:

No listed 'at risk' or 'threatened' species were observed. Lowland ribbonwood trees are rare in this part of the Geraldine Ecological District.



Lowland ribbonwood tree.

Significance Assessment:

Assessment against Canterbury Regional Policy Statement Appendix 3 criteria:

Criteria	Rank	Assessment
Representativeness	M	1. A degraded example of indigenous vegetation, representing all that remains in this part of the ecological district.
Rarity/Distinctiveness	H	3. Indigenous vegetation/habitat that has been reduced to less than 20% of its former extent in the ecological district.
Diversity and Pattern	L	A very low diversity of indigenous ecosystems, habitat types, or taxa.
Ecological Context	L	Vegetation/habitat that does not provide or contribute to an important ecological linkage or buffering, and does not provide important habitat for indigenous species.

Assessment against Timaru District Plan Part B criteria:

Primary Criteria	Rank	Assessment
Representativeness	M	A depleted example of indigenous vegetation which is typical of that remaining in the ecological district.
Rarity	M	The area supports an indigenous species that is now rare in this part of the ecological district.

Diversity and Pattern	L/M	A substantially depleted indigenous plant community.
Distinctiveness/Special Features	L	The area does not support species at distributional limits, intact sequences, or provide important fauna habitat.
Other Criteria		
Size/Shape	L	The area is small and poorly buffered.
Connectivity	L	The area is isolated from other areas of indigenous vegetation/habitat and does not form an important part of a network of fauna habitat.
Sustainability	M	The area is modified, but the indigenous vegetation (lowland ribbonwood and cabbage trees) is resilient.

The area is significant when assessed against the Canterbury Regional Policy Statement criteria, principally because it supports indigenous vegetation that has been reduced to less than 20% of its former extent in the ecological district.

Condition and Management:

The lowland ribbonwood tree is in good condition. The tree should be protected from stock damage and herbicide.



Cabbage trees.

TIMARU DISTRICT SIGNIFICANT NATURAL AREAS

ROADSIDE SNA SURVEY 2022

SNA 953

Road: Rangatira Valley Road

Side of Road: south

Map Reference (NZTM): 1452033E-5105824N

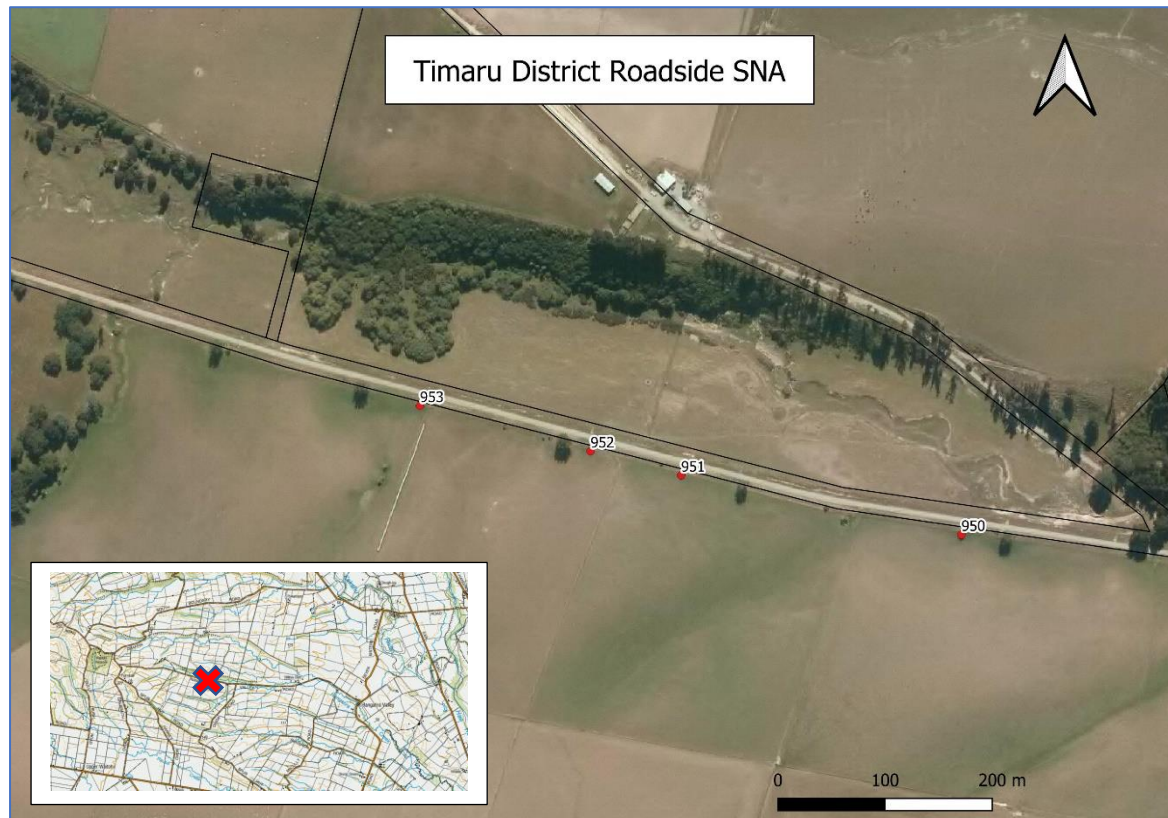
Ecological District: Geraldine

Nearest Locality: Waitohi

Adjacent Property: 24680-01500

Size: 5m²

Level IV Land Environment: N3.1a



Description:

One lowland ribbonwood tree (*Plagianthus regius*) in rank (un-grazed) exotic grassland, at the boundary fence. It is a moderate-sized tree with a trunk diameter (at breast height) of 82cm. It is possible that the tree may have been planted.

Notable Species:

No listed 'at risk' or 'threatened' species were observed. Lowland ribbonwood trees are rare in this part of the Geraldine Ecological District.



Significance Assessment:

Assessment against Canterbury Regional Policy Statement Appendix 3 criteria:

Criteria	Rank	Assessment
Representativeness	M	1. A degraded example of indigenous vegetation, representing all that remains in this part of the ecological district.
Rarity/Distinctiveness	H	3. Indigenous vegetation/habitat that has been reduced to less than 20% of its former extent in the ecological district.
Diversity and Pattern	L	A very low diversity of indigenous ecosystems, habitat types, or taxa.
Ecological Context	L	Vegetation/habitat that does not provide or contribute to an important ecological linkage or buffering, and does not provide important habitat for indigenous species.

Assessment against Timaru District Plan Part B criteria:

Primary Criteria	Rank	Assessment
Representativeness	M	A depleted example of indigenous vegetation which is typical of that remaining in the ecological district.
Rarity	M	The area supports an indigenous species that is now rare in this part of the ecological district.
Diversity and Pattern	L/M	A substantially depleted indigenous plant community.

Distinctiveness/Special Features	L	The area does not support species at distributional limits, intact sequences, or provide important fauna habitat.
Other Criteria		
Size/Shape	L	The area is small and poorly buffered.
Connectivity	L	The area is isolated from other areas of indigenous vegetation/habitat and does not form an important part of a network of fauna habitat.
Sustainability	M	The area is modified, but the indigenous vegetation (lowland ribbonwood tree) is resilient.

The area is significant when assessed against the Canterbury Regional Policy Statement criteria, principally because it supports indigenous vegetation that has been reduced to less than 20% of its former extent in the ecological district.

Condition and Management:

The lowland ribbonwood tree is in good condition. The tree should be protected from stock damage and herbicide.

TIMARU DISTRICT SIGNIFICANT NATURAL AREAS

ROADSIDE SNA SURVEY 2022

SNA 954

Road: Rangatira Valley Road

Side of Road: both sides
24680-00200 north

Map Reference (NZTM): 1451476E-5106000N

Ecological District: Geraldine

Nearest Locality: Waitohi

Adjacent Property: 24680-01600

Size: 0.65ha

Level IV Land Environment: N3.1a



Description:

Several ti/cabbage trees (*Cordyline australis*) in rank (un-grazed) exotic grassland adjacent to boundary fences, on both sides of the road. The road verges have been mown.

Notable Species:

No listed 'at risk' or 'threatened' species were observed.



Significance Assessment:

Assessment against Canterbury Regional Policy Statement Appendix 3 criteria:

Criteria	Rank	Assessment
Representativeness	M	1. A degraded example of indigenous vegetation, representing all that remains in this part of the ecological district.
Rarity/Distinctiveness	H	3. Indigenous vegetation/habitat that has been reduced to less than 20% of its former extent in the ecological district.
Diversity and Pattern	L	A very low diversity of indigenous ecosystems, habitat types, or taxa.
Ecological Context	L	Vegetation/habitat that does not provide or contribute to an important ecological linkage or buffering, and does not provide important habitat for indigenous species.

Assessment against Timaru District Plan Part B criteria:

Primary Criteria	Rank	Assessment
Representativeness	M	A depleted example of indigenous vegetation which is typical of that remaining in the ecological district.
Rarity	L/M	The area supports an indigenous species that is now much less common in this part of the ecological district.
Diversity and Pattern	L/M	A substantially depleted indigenous plant community.

Distinctiveness/Special Features	L	The area does not support species at distributional limits, intact sequences, or provide important fauna habitat.
Other Criteria		
Size/Shape	L	The area is small and poorly buffered.
Connectivity	L	The area is isolated from other areas of indigenous vegetation/habitat and does not form an important part of a network of fauna habitat.
Sustainability	M	The area is modified, but the indigenous vegetation (cabbage trees) is resilient.

The area is significant when assessed against the Canterbury Regional Policy Statement criteria, principally because it supports indigenous vegetation that has been reduced to less than 20% of its former extent in the ecological district.

Condition and Management:

Most of the cabbage trees are in relatively good condition. The trees should be protected from stock damage and herbicide.



TIMARU DISTRICT SIGNIFICANT NATURAL AREAS

ROADSIDE SNA SURVEY 2022

SNA 955

Road: Rangatira Valley Road

Side of Road: both sides

24680-00200 north

Map Reference (NZTM): 1450564E-5106069N

Ecological District: Geraldine

Nearest Locality: Waitohi

Adjacent Property: 24680-01600

Size: 1.31ha

Level IV Land Environment: N3.1a



Description:

Several ti/cabbage trees (*Cordyline australis*) in rank (un-grazed) exotic grassland, on both sides of the road. The road verges have been mown.

Notable Species:

No listed 'at risk' or 'threatened' species were observed.



Significance Assessment:

Assessment against Canterbury Regional Policy Statement Appendix 3 criteria:

Criteria	Rank	Assessment
Representativeness	M	1. A degraded example of indigenous vegetation, representing all that remains in this part of the ecological district.
Rarity/Distinctiveness	H	3. Indigenous vegetation/habitat that has been reduced to less than 20% of its former extent in the ecological district.
Diversity and Pattern	L	A very low diversity of indigenous ecosystems, habitat types, or taxa.
Ecological Context	L	Vegetation/habitat that does not provide or contribute to an important ecological linkage or buffering, and does not provide important habitat for indigenous species.

Assessment against Timaru District Plan Part B criteria:

Primary Criteria	Rank	Assessment
Representativeness	M	A depleted example of indigenous vegetation which is typical of that remaining in the ecological district.
Rarity	L/M	The area supports an indigenous species that is now much less common in this part of the ecological district.
Diversity and Pattern	L/M	A substantially depleted indigenous plant community.

Distinctiveness/Special Features	L	The area does not support species at distributional limits, intact sequences, or provide important fauna habitat.
Other Criteria		
Size/Shape	L	The area is small and poorly buffered.
Connectivity	L	The area is isolated from other areas of indigenous vegetation/habitat and does not form an important part of a network of fauna habitat.
Sustainability	M	The area is modified, but the indigenous vegetation (cabbage trees) is resilient.

The area is significant when assessed against the Canterbury Regional Policy Statement criteria, principally because it supports indigenous vegetation that has been reduced to less than 20% of its former extent in the ecological district.

Condition and Management:

Most of the cabbage trees are in relatively good condition. The trees should be protected from stock damage and herbicide.

