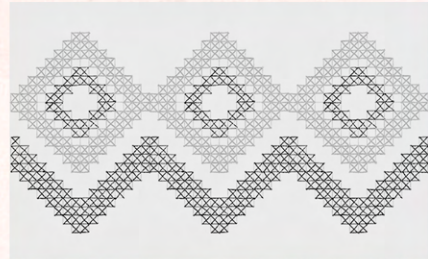


Greenweave: Te Raranga A Tane

The proposal maintains the majority of the seating area, garden planters, and established, mature trees. This keeps the area a significant green area within the city centre. New native plantings are weaved in and around the design that flow with 'kerbless' paving design opportunities to be developed.

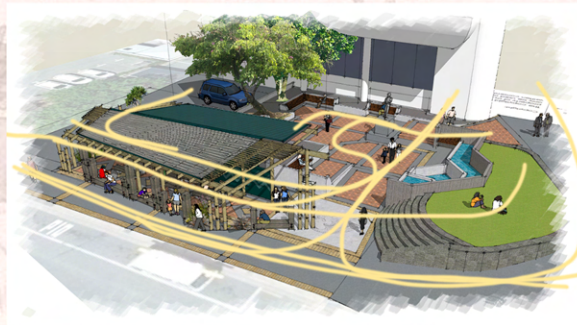


'kerbless street' Auckland



Coastal Connection: Ārai Te Uru

There are multiple coastal connections in the design that help the design sit well in its context. These include repurposed wharf timbers, coastal pātiki (flounder) tukutuku pattern, and historical images. More subtly, the roof form and structure hints at ship sails and rigging.



Welcome Home: Hoki Mai

Mixed use is integral to the design which presents several axes of circulation and activity that invites the public to move past, move through or pause to use the amenities. The circulation then flows into and integrates with the existing public spaces.

The Heart Within: Te Ngākau A Iwi

One aim of the design is to recognise and reflect the cultural values of tangata whenua and pākehā, with the use of historical decals, local Maori designs and motifs displayed on the privacy panels, walls and paving.



Nga Whāriki Manaki - Chch



Kaikoura Public Toilets



timaru.
t: +64 3 683 1300
e: admin@dla.co.nz
49 George Street,
timaru, 7910

Copyright:

The copyright of this drawings remains the property of DLA Architects Limited and may only be used or re-used with DLA's prior written consent.

Background image: Timaru harbour and town from the south. 1877 or 1878?
by Brunton, Fanny Wright