

Claremont Cemetery, Timaru

Consultation Package



Prepared for Timaru District Council by:

Landscape Architecture



Planning



REVISION I
01/08/2025

Contents

1.0	Introduction	3	12.0	Children and Babies Zone	18
2.0	Design Vision and Objectives	5	13.0	Future Development Zone	19
3.0	Consultation.	6	13.1	Future Development Zone (Indicative Imagery)	20
4.0	Wider Site Context	7	14.0	Natural Burials Zone.	21
5.0	Immediate Site Context	8	14.1	Natural Burials Zone (Indicative Imagery)	22
6.0	Masterplan	9	14.2	Native Boundary Planting (Indicative Imagery)	23
7.0	Zoning Key Plan.	10	15.0	Indicative native species	24
8.0	Design Strategy: Progressive Plan	11	15.1	Indicative native species	25
9.0	Entrance and Formal Garden Zone Plan	12	15.2	Indicative native species	26
9.1	Entrance and Formal Garden Zone (Indicative Imagery)	13	15.3	Indicative native species	27
10.0	Ash Interment Zone	14	16.0	Indicative exotic species	28
10.1	Ash Interment Zone (Indicative Imagery).	15	17.0	Materials Palette.	29
11.0	Burial Zone	16			
11.1	Burial Zone (Indicative Imagery)	17			

1.0 Introduction

About this project

Timaru District Council has commissioned this draft landscape plan in relation to the new Timaru cemetery at 168 and 190 Claremont Road. The new cemetery is proposed to serve the Timaru area as it's existing cemetery is predicted to run out of space in approximately 5-10 years.

The draft landscape plan has been developed by a landscape architect and was informed by consultation with neighbours and stakeholders along with other relevant matters. Council greatly encourages any interested parties to provide comment on the draft landscape plan.

Have your say

You can make comments on the draft landscape plan by e-mailing parks@timdc.govt.nz. All comments must be received by Council by 10 September 2025.

Next Steps

Timeline

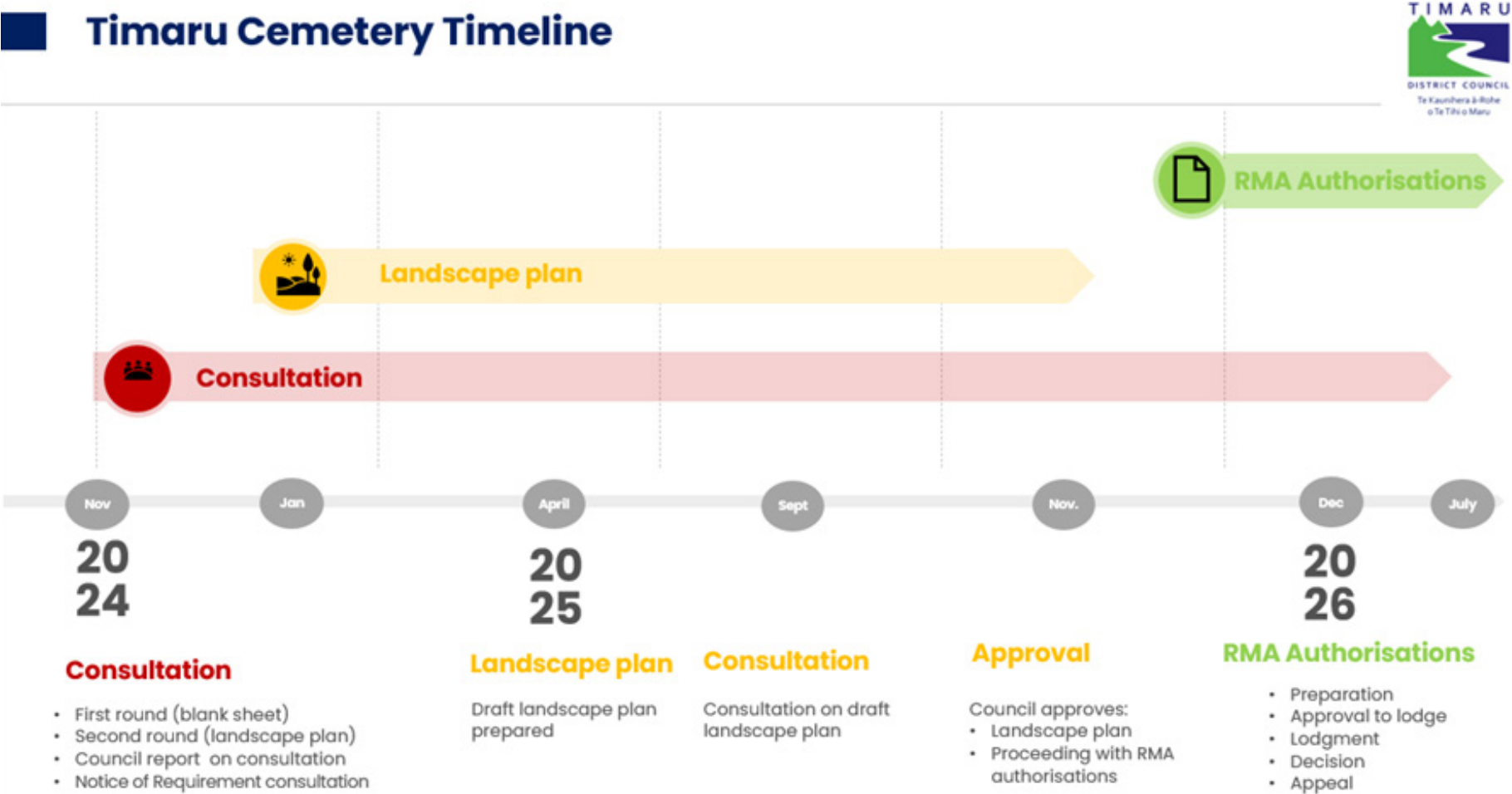
The timeline for the cemetery project is illustrated in the following chart.

Post-consultation actions

After the consultation on the draft landscape plan, any necessary modifications to the landscape plan will made in light of comments received. A report will then be prepared summarising that consultation, requesting Council to consider approving the landscape plan and to approve the lodgement of the necessary RMA authorisations. This will include a Notice of Requirement, which is an application for a designation that includes an opportunity for public submissions.

Notes

- This proposal is a draft concept and subject to consultation, approval detailed design and further technical input.





The need for a new Cemetery

The existing Timaru cemetery is predicted to run out of space in approximately 5-10 years. Council has a statutory obligation under the Burial and Cremation Act 1964 to establish and maintain suitable cemeteries where sufficient provision is not otherwise made for burial within its district. They are also authorised under that act to undertake

any work for the purpose of carrying out that duty and to expend such money as it thinks fit on the acquisition of land for cemeteries and on the establishment, maintenance, and improvement of cemeteries.

The location of the new Timaru cemetery

Council has acquired land for the new cemetery at 168 and 190 Claremont Road, Timaru.

Site considerations

Before acquiring this land, Council considered more than 27 different sites for the purposes of establishing the cemetery. Most of those sites were unsuitable for a range of reasons including:

- Not being available for purchase, or being available at a reasonable price
- Not being a sufficient size to cater for intergenerational needs
- The topography being too steep
- The soil conditions being unsuitable e.g. too wet, or unsuitable subsoil
- Being subject to inundation from rivers
- Having unsuitable groundwater conditions e.g. unconfined aquifers or high-water table
- Having unsuitable neighbours e.g. industrial
- Being location too far away from Timaru.

Claremont Road attributes

The Claremont Road site has several positive attributes that led to its eventual purchase, including that it:

- was available for purchase at a reasonable price
- is sufficiently large enough to cater for the intergenerational needs of the community
- has large areas of flat land and other areas of suitable topography
- has a suitable subsoil that is stable and will minimise leachate
- is mostly free from river inundation
- is not located above any semi or unconfined aquifers or a high-water table
- is not located adjoining or close to any industrial activities
- it has complementary neighbouring low intensity rural landuses that are unlikely to effect the character or amenity of the cemetery
- is located a short distance from Timaru and capable of being serviced by public transport services and footpaths
- it is capable of integrating with an existing and proposed off-road walking and cycling network.

2.0 Design vision and objectives

Timaru Cemetery Vision

Timaru Cemetery will be a timeless sanctuary where remembrance and reflection are embraced - a cemetery in a park that honours the past, nurtures biodiversity, and offers a peaceful, inclusive space for the community to connect with nature and memory.

Objectives

<p>Foster Community Connections</p> <p>Provide accessible, welcoming spaces for quiet reflection, walking and play, encouraging a sense of belonging for the community.</p>	<p>Long-Term Adaptability and Stewardship</p> <p>To plan for flexible, future-proof development and management that can evolve with changing practices, cultural needs and technologies.</p>	<p>Honour and Celebrate Remembrance</p> <p>To create a dignified, serene environment that respects cultural traditions, commemorates lives and supports diverse forms of remembrance.</p>	<p>Integrate Nature and Biodiversity</p> <p>To design a cemetery in a park that supports native planting, wildlife habitats and sustainable land practices.</p>
--	---	--	--

3.0 Consultation

To date we have consulted with key stakeholders and local residents to get their input on the proposed Claremont Road Cemetery in Timaru.

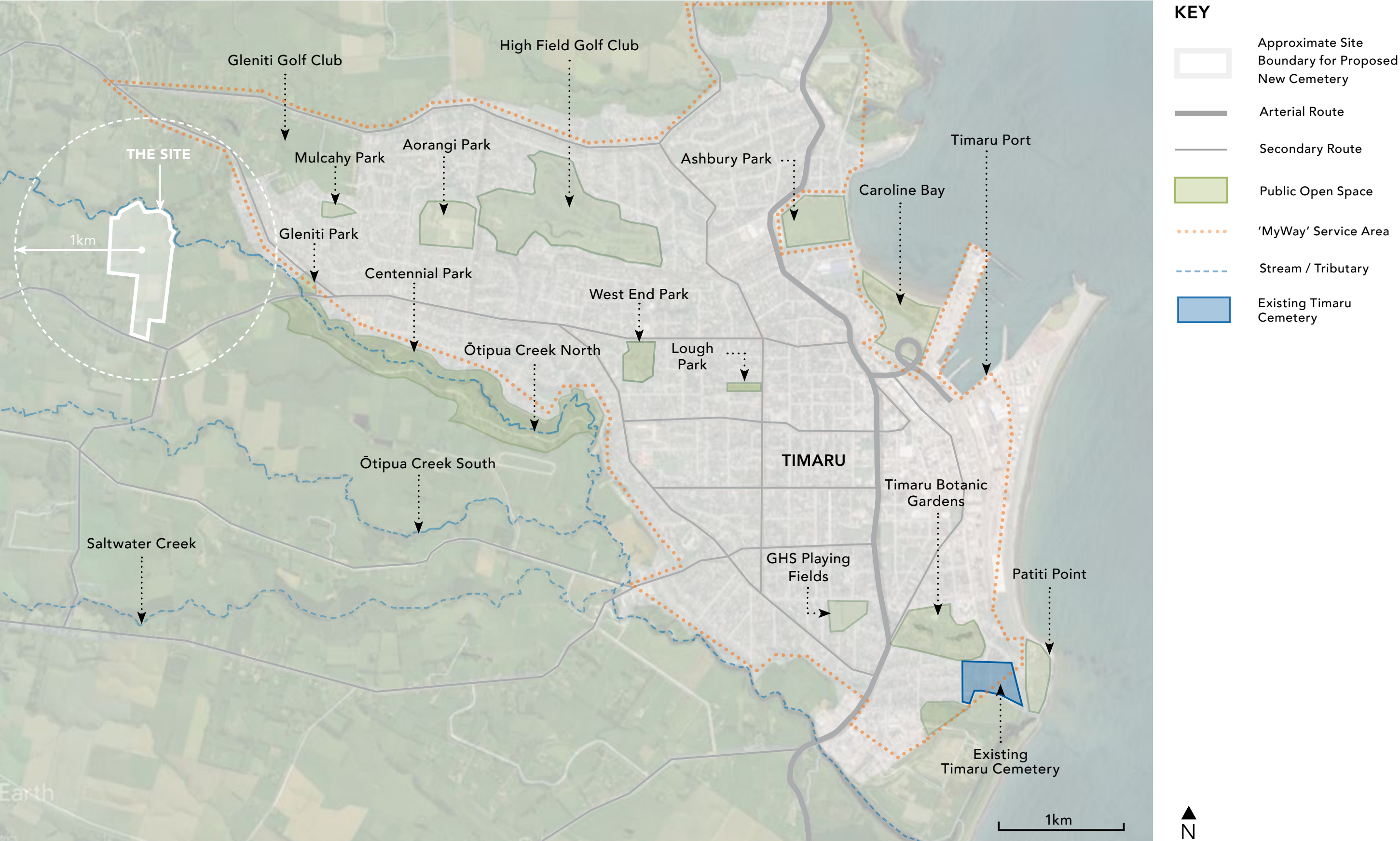
The following table summarises the input received from neighbours and stakeholders in the first round of consultation on the new Timaru Cemetery and the design implications or response in relation to those matters.

The names of the stakeholders and neighbours are not referenced to protect their privacy, nor are specific requests from neighbours included.

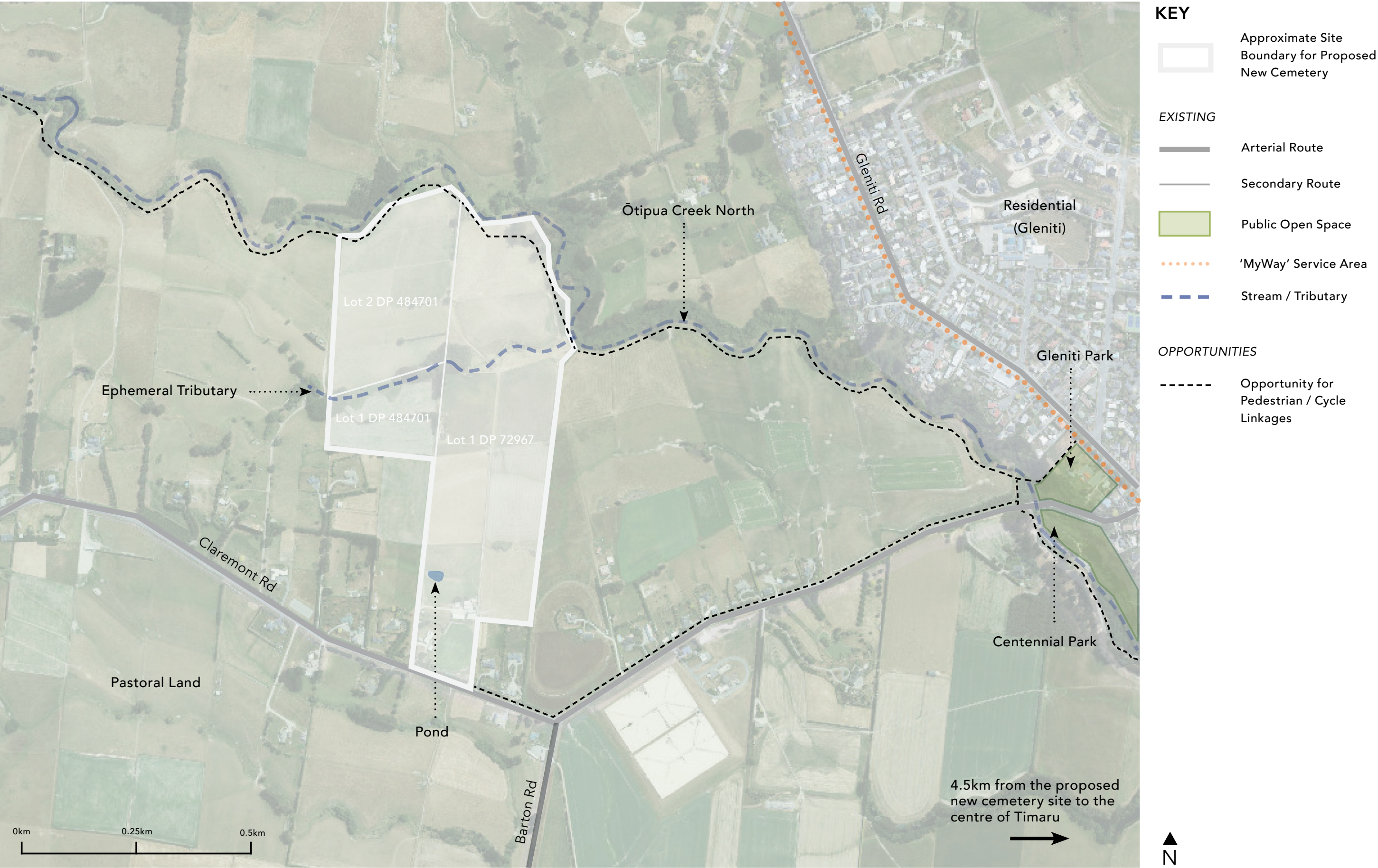
The intention of the summary is to provide a concise overview of the comments received and to illustrate the design response, or the implications for the design. The intention is not to provide an exhaustive detailed account of the comments.

Category	Stakeholder /neighbor Input	Design Implication/ response
Location	Concern about whether the site is the best location, and about its accessibility.	Council has purchased the site after considering multiple different sites. Ensure the site is accessible to public transport.
Environment & Drainage	Concern about embalming fluid leaching, stormwater runoff, creek inundation, erosion, asbestos pipes, groundwater in graves.	Careful drainage design, leachate controls, monitor groundwater, consider shallow/natural burials. A discharge consent will be required for leachate.
Social Safety	Concern about antisocial behaviour occurring at night. Secure boundary fences requested, but also some gates into neighbouring properties requested.	Gates and boundary fences to ensure the site is securable.
Devaluing property	Concern about devaluing property, particularly through visibility of headstones.	Ensure good screening and amenities neighbours can use.
Traffic & Access	Safety concerns at Claremont/Barton Road and the speed limit on Claremont Road. Requests for footpaths, MyWay access, turning bays, passing areas, hearse access, two separate access points, and the avoidance of long continuous lines of graves for accessibility.	Traffic calming measures on site, footpath to town; upgraded intersections, internal circulation design, walking paths, plot layout. Council is in the process of upgrading the Claremont/Barton Road intersection. It trimmed/vegetation, provided signage and will establish curb and channel once conditions dry out.
Site Screening	Requests for boundary screening but also retention of some views. Request for colourful planting, taller trees along property lines.	Extensive boundary planting, hedge retention, visual buffers from residential areas, but also view retention for some properties.
Lighting	Opposition to streetlights along Claremont Road to preserve night sky.	Consideration of the need for streetlighting on Claremont Road; minimal, targeted internal lighting if needed.
Burial Types	Traditional burials, ashes internment (wall + landscape areas), ashes scattering areas, RSA section, natural burials including special ecological area, memorial trees, memorial plaques.	Plan flexible burial zones, integrate memorial walls, tree areas, and RSA-dedicated space, natural burials area.
Cultural Needs	Catholic (soil ritual, burial focus), Muslim (burial same day, facing Mecca), Hindu (cremation, fire pot).	Plan flexible ceremony facilities, enable same-day burial access, orient graves appropriately.
Amenities	Public toilets, accessible parking, seating, shade, rubbish bins, composting stations, cleaning points, shelter, drinking fountain.	Accessible and shaded/sheltered rest areas, inclusive infrastructure across cemetery.
Play & Park Features	Playground, secret garden, walkways, bike paths, picnic areas.	Include low-key recreation/park elements without diminishing cemetery dignity.
Wayfinding & Digital	Signboards, QR codes, online navigation, wifi, clear visual markers.	Integrated signage, digital map access, tree clusters or landmarks for navigation.
Layout Style	Park-like, naturalistic, avoid long straight grave rows, organic natural burial zones.	Soft, informal layout, natural burial forest concept, cluster plantings, staged growth

4.0 Wider Site Context



5.0 Immediate Site Context

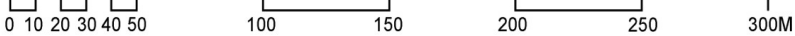


6.0 Masterplan



SCALE: 1: 3,000@ A3

1:3000 @ A3

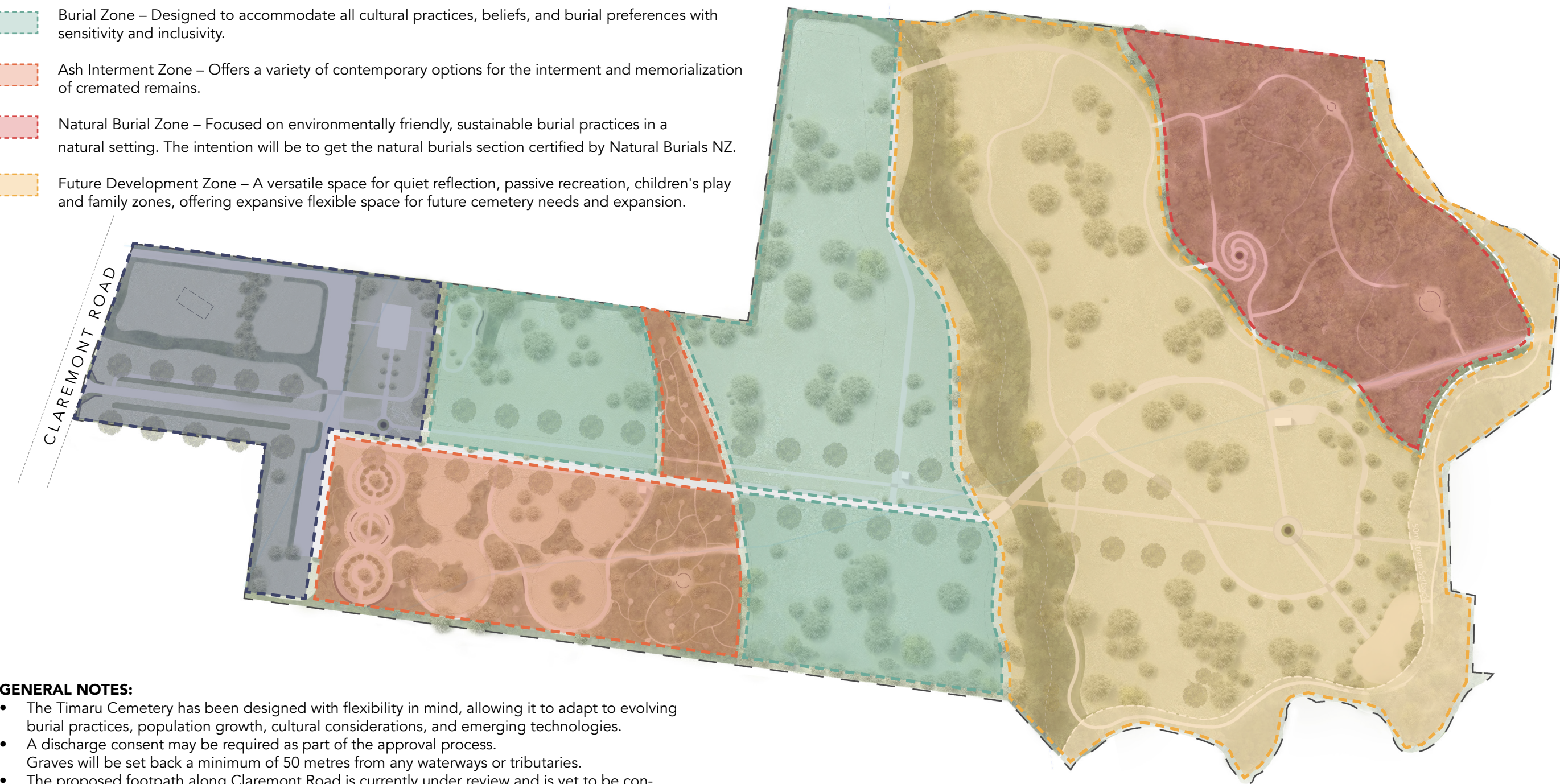


Note: For the purposes of this document, the site has been rotated with north oriented to the left of the page to accommodate all proposed works and ensure they fit clearly within the consultation package.

7.0 Zoning Key Plan

The Timaru Cemetery design proposal presents a fresh, modern approach to cemetery planning, thoughtfully divided into five key zones to cater to a wide range of needs and preferences. These zones include:

- Entrance and Formal Garden Zone – A welcoming, landscaped area that creates a peaceful and respectful first impression, with Chapel, pond, carparking and reflection spaces.
- Burial Zone – Designed to accommodate all cultural practices, beliefs, and burial preferences with sensitivity and inclusivity.
- Ash Interment Zone – Offers a variety of contemporary options for the interment and memorialization of cremated remains.
- Natural Burial Zone – Focused on environmentally friendly, sustainable burial practices in a natural setting. The intention will be to get the natural burials section certified by Natural Burials NZ.
- Future Development Zone – A versatile space for quiet reflection, passive recreation, children's play and family zones, offering expansive flexible space for future cemetery needs and expansion.



GENERAL NOTES:

- The Timaru Cemetery has been designed with flexibility in mind, allowing it to adapt to evolving burial practices, population growth, cultural considerations, and emerging technologies.
- A discharge consent may be required as part of the approval process.
Graves will be set back a minimum of 50 metres from any waterways or tributaries.
- The proposed footpath along Claremont Road is currently under review and is yet to be confirmed as within the project scope.
Boundary treatments will be determined in consultation with neighbouring property owners.
- The general arrangement of graves will be finalized later in the design process, with particular attention given to cultural burial practices and requirements.
A pet cemetery has been excluded from the current concept proposal.
- This package is conceptual only, further detail following consultation.

8.0 Design Strategy: Progressive Plan

Strategy

Stage 1 – Primary Establishment Phase (~0-15 years)

This initial phase focuses on the development of the main entrance, formal garden zone, children’s area, primary burial area, and ash interment zone. It also includes the establishment of riparian enhancement planting, forming a key part of the site's early ecological and landscape framework.

Stage 2 – Burial and Ash Interment Expansion (~15-30 years)

This stage provides for the future extension of traditional burial plots and ash interment areas, enabling a range of interment options to meet long-term community needs.

Stage 3 – Landscape Integration and Passive Use (~30-60 years)

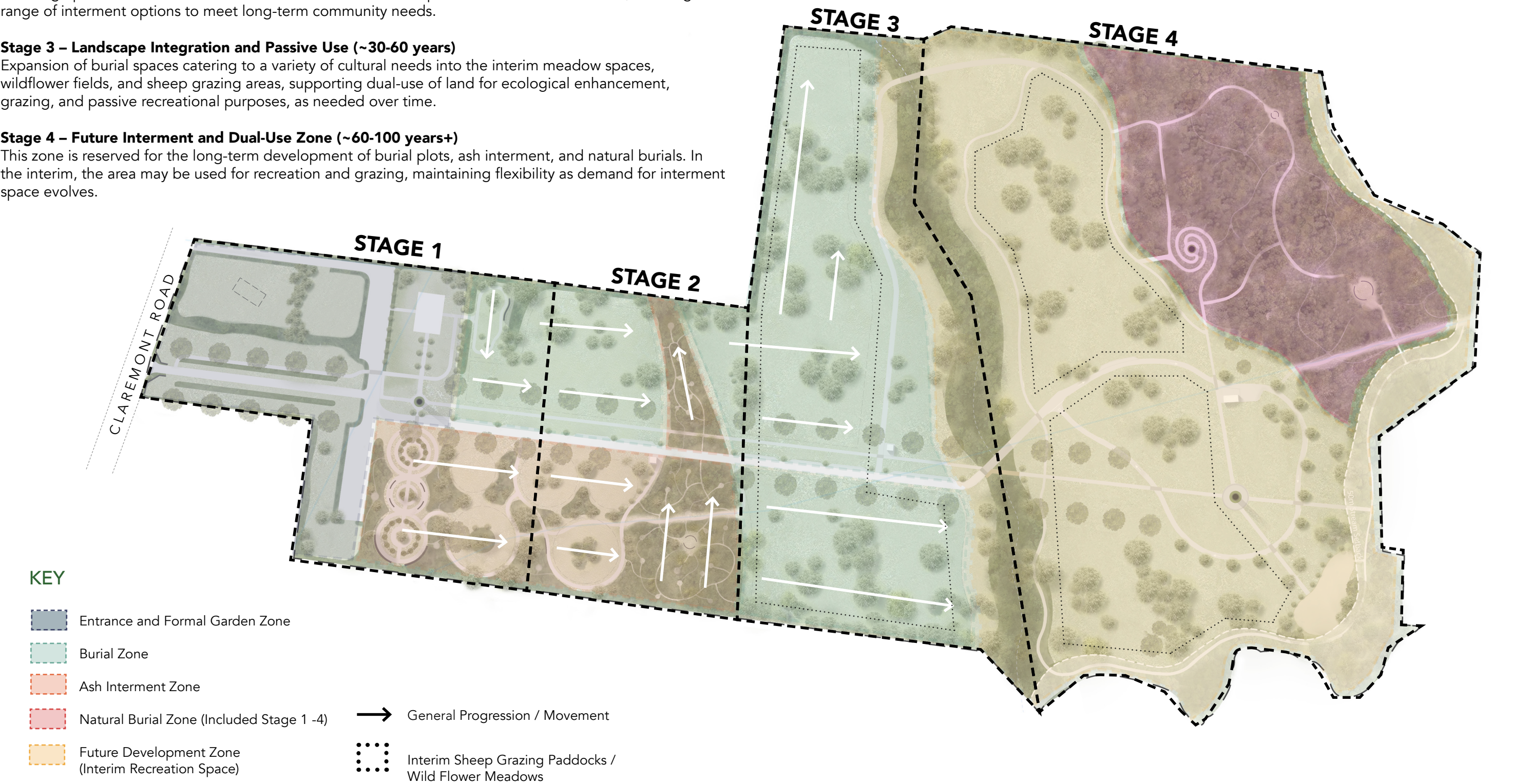
Expansion of burial spaces catering to a variety of cultural needs into the interim meadow spaces, wildflower fields, and sheep grazing areas, supporting dual-use of land for ecological enhancement, grazing, and passive recreational purposes, as needed over time.

Stage 4 – Future Interment and Dual-Use Zone (~60-100 years+)

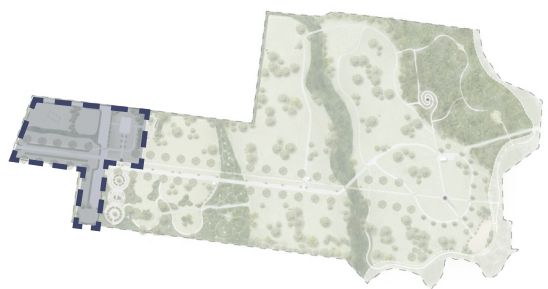
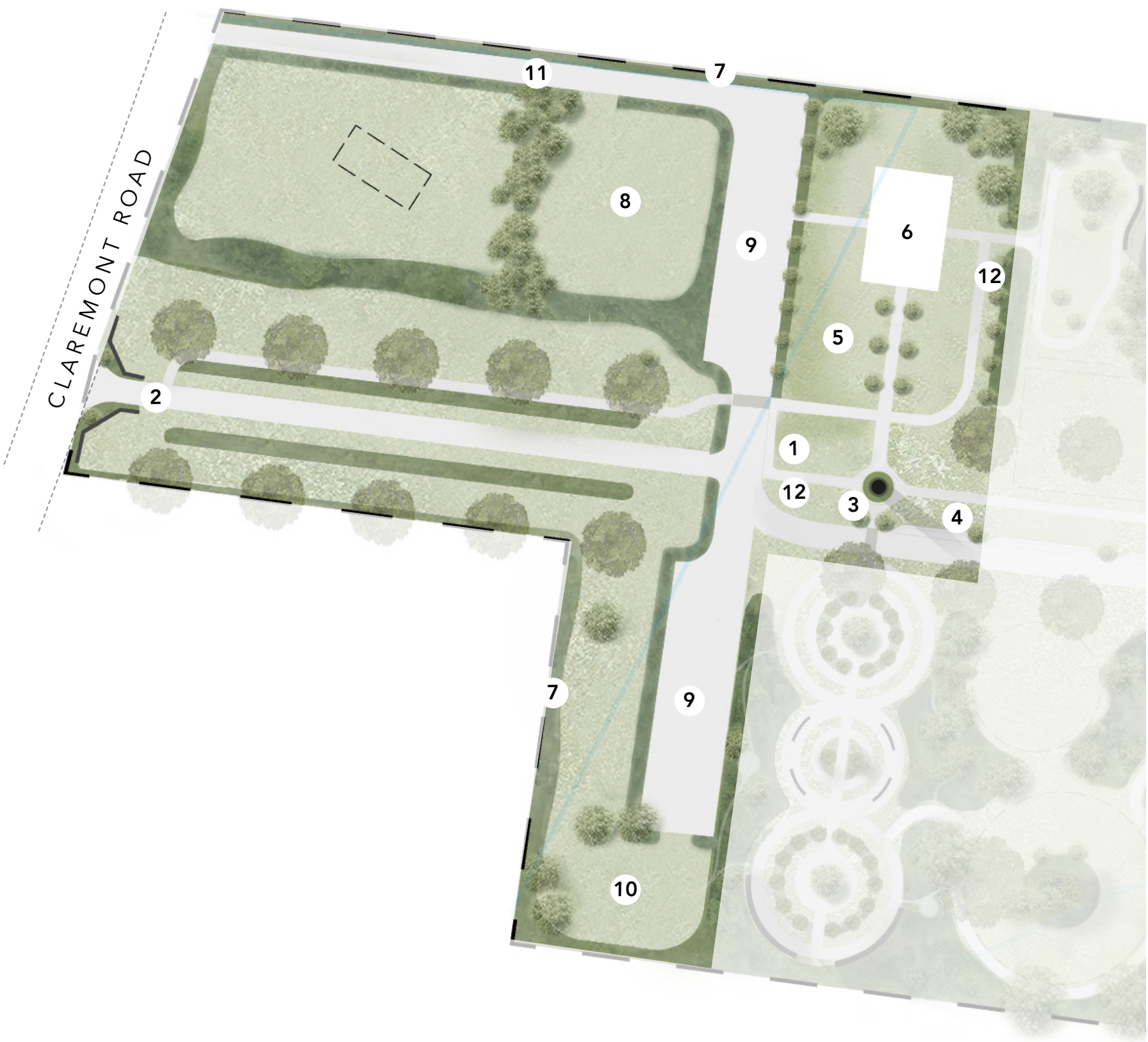
This zone is reserved for the long-term development of burial plots, ash interment, and natural burials. In the interim, the area may be used for recreation and grazing, maintaining flexibility as demand for interment space evolves.

NOTE: Timaru Cemetery has been planned to allow flexibility to adapt with changing practices, population growth, cultural needs and technologies.

Arrangement of graves and ash interment to be determined at a later stage of design.



9.0 Entrance and Formal Garden Zone Plan



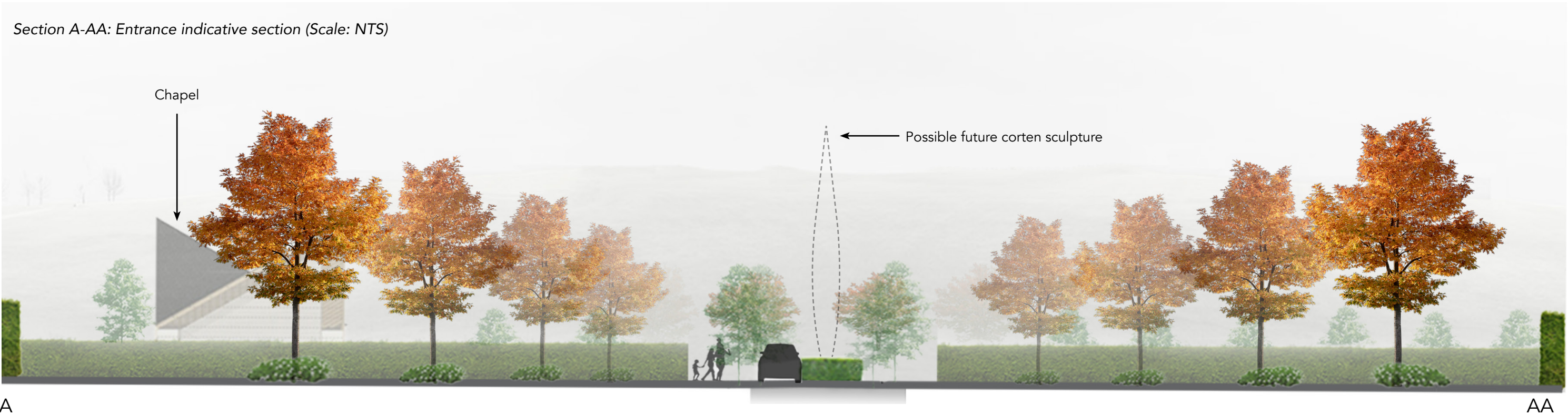
Key Plan

Design elements

Welcoming, formal, tree-lined entrance with accessible car park area and drop off zone:

1. Designated meeting area
2. Sculptural gates / entry feature which can be closed to limit opening hours
3. Sculptural "candle" (one of three) creating three key landmarks within the 1.2km site
4. Vehicular and pedestrian boulevard framing views of cultural monument in the distance (located near the Ōtipua Creek entrance)
5. Formal gardens with structured geometry incorporating seasonal colour and texture
6. Ceremonial chapel with space for intimate ceremonies / cultural rites, a reflection room, toilets and an outdoor courtyard connected to a formal garden
7. Buffer planting along residential boundaries
8. Proposed Yard Location
9. Car park
10. Overflow car park
11. Existing driveway - could be used as a secondary entrance to the car park or for accessing the sextons residence and cafe
12. Clear wayfinding through signage, interpretive elements, Map, path hierarchy and digital navigation (e.g. GPS, QR codes).

9.1 Entrance and Formal Garden Zone (indicative imagery)

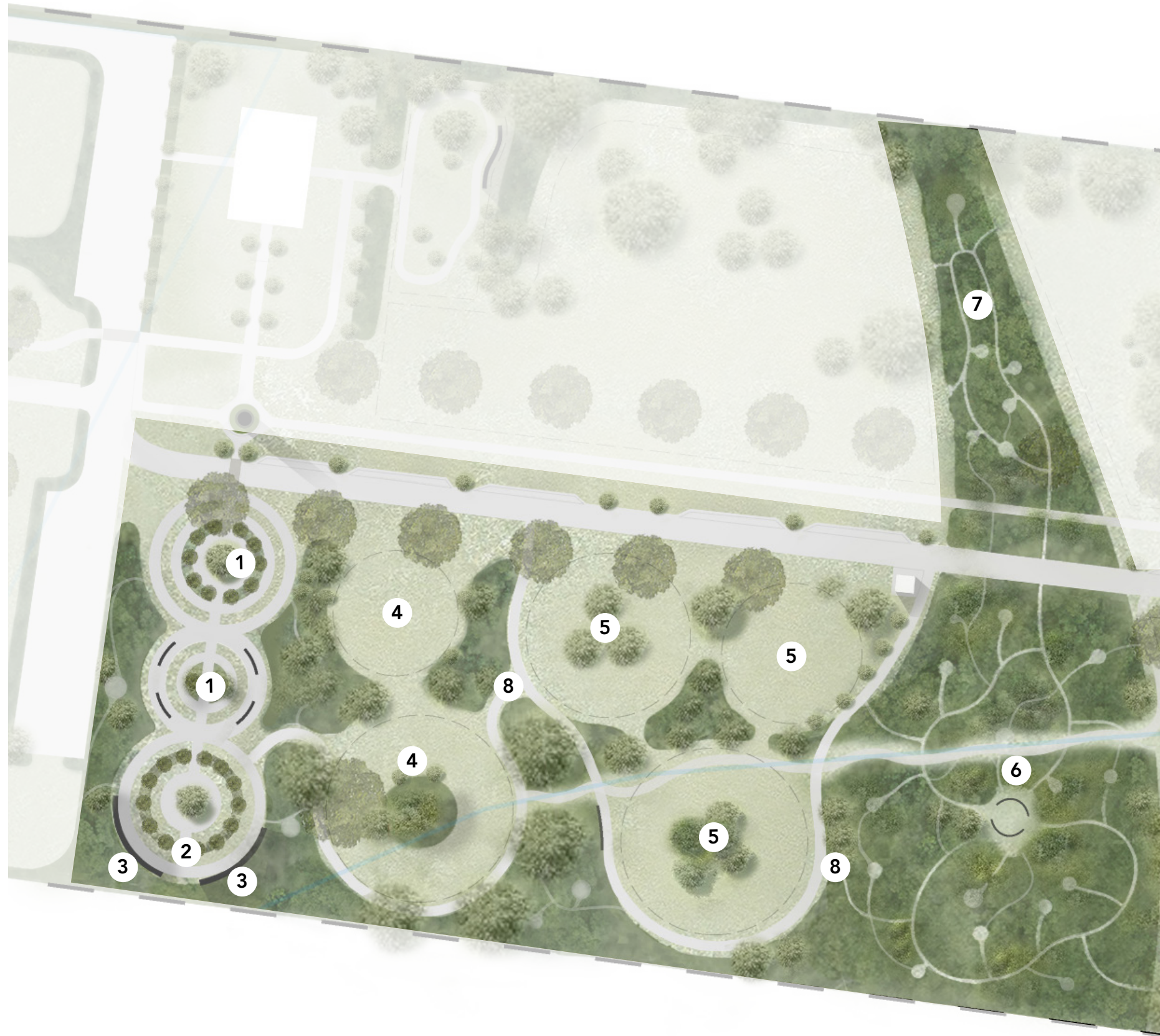


Formal gardens



Corten steel entrance gate

10.0 Ash Interment Zone



Key Plan

Design elements

1. Formal ash plot gardens:
 - Logical transition from formal garden
 - Symmetry and formal axes
 - Clipped hedges, roses and seasonal plants for year-round interest
 - Courtyards with seating for reflection and contemplation
2. Formal ash plots with reserved RSA area in centre
3. Columbarium walls with split face Timaru bluestone
4. Circular ash interment lawn with surrounding memorial plaques
5. Future expansion area for either formal ash interment or natural ash interment setting
6. Native forest ash plot setting:
 - Organic winding paths
 - Natural elements
 - Rustic corten steel memorial sculptures with memorial rock surrounds
 - Intimate reflection areas with seating
 - Memorial sculpture for hanging engraved memory tags or plaques
 - Columbarium wall with niches for ashes
7. Future expansion area for native ash plots
8. Connected accessible pathways

10.1 Ash Interment Zone (indicative imagery)

Formal Ash Interment Area



Curved Timaru bluestone columbarium walls



Formal garden layout with seasonal trees



Formal garden layout with seasonal trees



Formal ash plot gardens



Formal ash plot gardens

Native Forest Ash Interment Area



Memorial area set within a clearing in the native planting. Options for burial of ashes under a unique rock with plaque or a memorial plate on the central sculpture and burial within the grass area or ash interment within the forest adjacent could be opportunities.

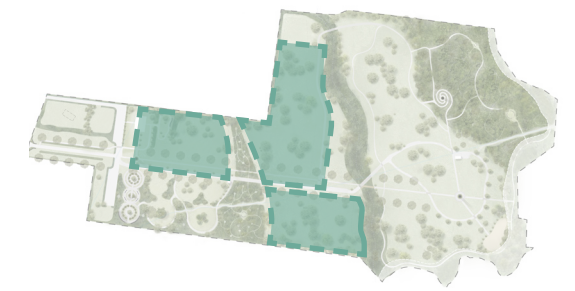
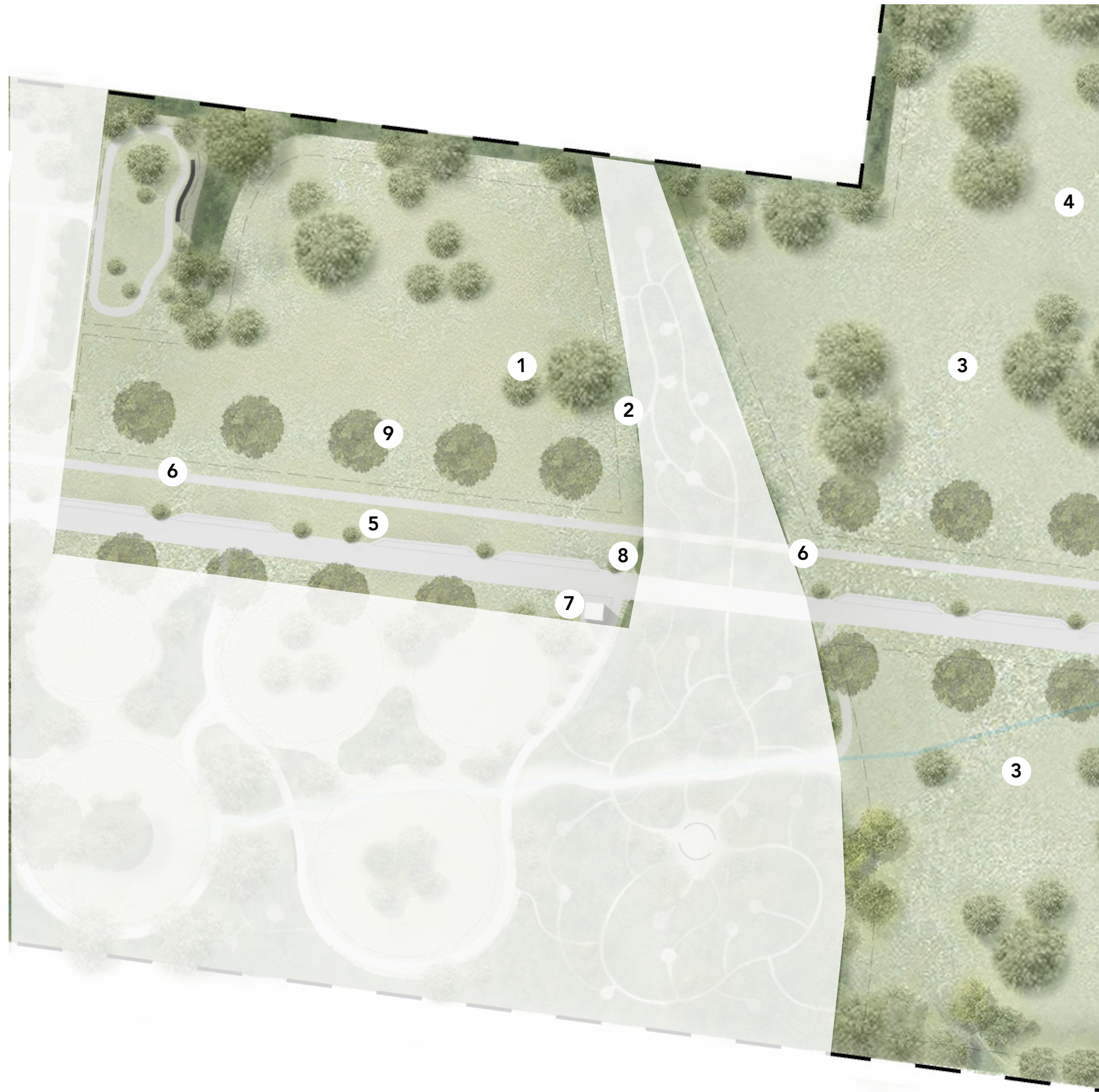


Alternative timber centrepiece within the stone circle. Memorial plaques can be placed on the rocks or on a reclaimed hardwood timber beam.



Central memorial area within the forest zone, Wall can also be host to memorial plaques with urns can be interred behind the wall.

11.0 Burial Zone



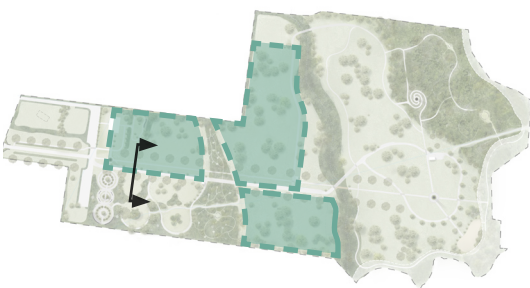
Key Plan

Design Opportunities

1. Primarily burial plots with option to inter ashes
2. Designated areas providing for cultural traditions e.g., burial orientation, grave size, fire bowl, water
3. Flexibility to expand areas depending on demand
4. Primary tree-lined two-way vehicular access with secondary route for hearse (accessible to vehicles on request)
5. Accessible pathways
6. Covered ceremonial shelter
7. Contemplation and reflection areas with seating
8. Grave maintenance / cleaning station

11.1 Burial Zone (Indicative Imagery)

Section B-BB: Indicative Burial and Ash Interment Zones (Scale: NTS)



Key Plan



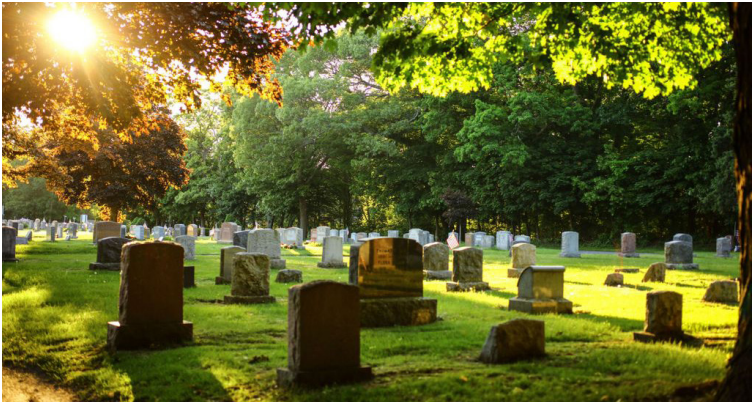
Covered shelter for graveside ceremonies



Formal tree avenue with autumn colour interest and seating along primary pedestrian route.

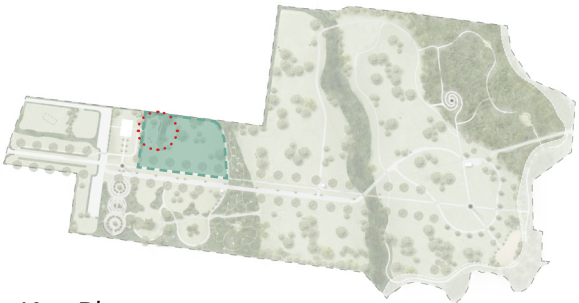


Tree planting for spring interest.



Tree groupings and boundary planting break up the monotony of the site and provide shade and interest.

12.0 Children and Babies Zone



Key Plan

Design Opportunities

Gentle, tender atmosphere with soothing, soft, natural features:

1. Garden setting with colour and fragrance - sensory elements
2. Subtle elements such as curved, textured paths
3. Intimate 'garden rooms' including seating and a ceremonial / reflection area
4. Memorial sculpture for hanging engraved memory tags or plaques
5. Smaller graves and ash plots
6. Dedicated area for still born babies
7. Accessible primary paths



Infant memorial garden space with sculptural elements bearing memorial plaques



Artistic mosaic path



Intimate ceremonial and contemplation area

13.0 Future Development Zone



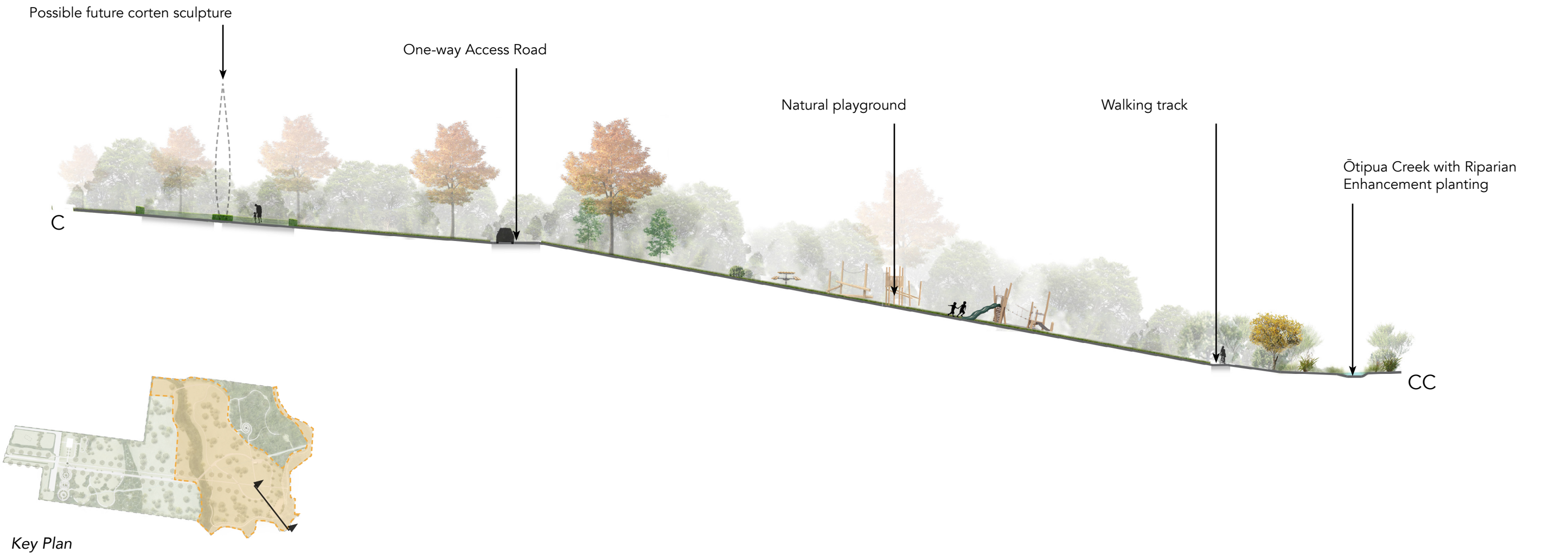
Key Plan

Design Opportunities

- 1. Natural play area
- 2. Pedestrian / Cycle Linkage to Gleniti Park
- 3. Sculptural monument - visible from up the tree-lined avenue
- 4. Riparian enhancement along Ōtipua Creek and the ephemeral waterway that crosses the site
- 5. Wildflower meadows, bulb lawns and/or sheep grazing, allowing flexibility for future expansion of the burial and ash interment areas
- 6. Connected walkways linking the natural play area, Natural burial zone and more formal cemetery areas
- 7. Toilet block and car parking
- 8. Shelter and seating
- 9. Maintenance Access Road

13.1 Future Development Zone (indicative imagery)

Section C-CC - Indicative nature play (Scale:NTS)



Wildflower meadows with informal paths create a transitional buffer area to separate active burial zones and grazed portions of the site.

14.0 Natural Burials Zone



Key Plan

Design opportunities

1. Natural burials
 - Maximizing conditions for efficient decomposition
 - Trees or seedlings placed at the grave
 - Natural biodegradable grave markers
 - Restoring area to native forest
2. Bio-diverse native forest that will establish over time using a staged planting plan
3. Natural Burial Zone walkway
4. Central mound with spiral walking track offering views of the Southern Alps and cemetery
5. Quiet reflection and contemplation areas
6. Gathering and memorial space
7. Parking and Toilet Facility
8. Large Tree and Shrub clearance 1.5m either side of Waterline



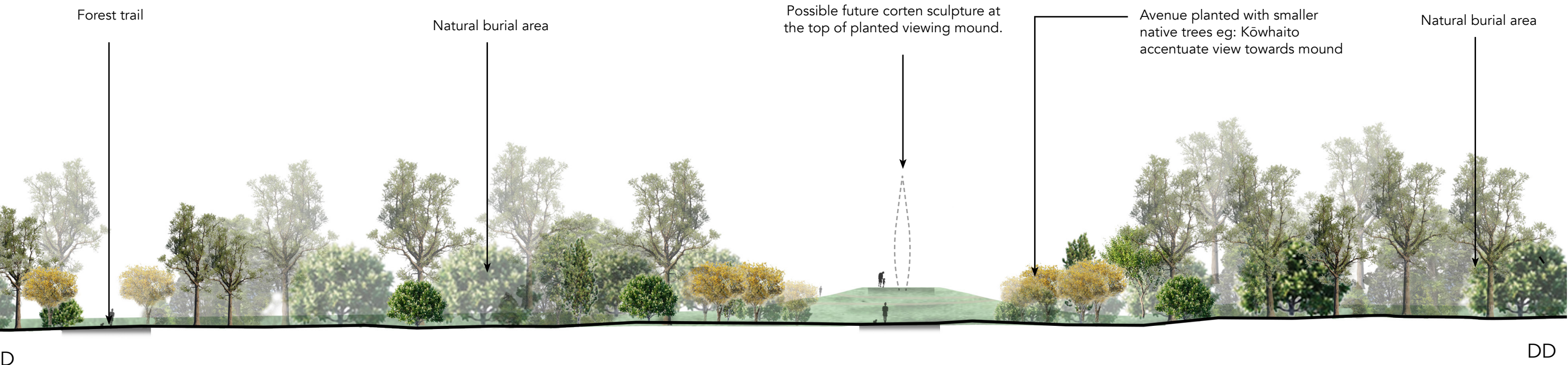
SCALE: NTS

1:50

0 0.5 1 2 3 4 5M

14.1 Natural Burials Zone (Indicative Imagery)

Section D-DD - Indicative Natural Burial Zone (Scale:NTS)



Key Plan



Natural burial memorial



Waikumete Cemetery natural burial area



Corten steel shelter

14.2 Native Boundary Planting (Indicative Imagery)

Note: Boundary Treatments to be agreed with neighbouring property owners.

Section E-EE - Indicative Native Boundary Planting



E

EE



Pittosporum tenuifolium / Lemonwood Boundary Screen Planting



Totara Trees used along periphery of site



Oak Stands throughout undulating park space

15.0 Indicative native species

Specimen trees



Cabbage tree
Cordyline australis



Kahikatea
Dacrycarpus dacrydioides



Narrow-leaved lacebark
Hoheria angustifolia



Lemonwood
Pittosporum eugenioides



Ribbonwood
Plagianthus regius



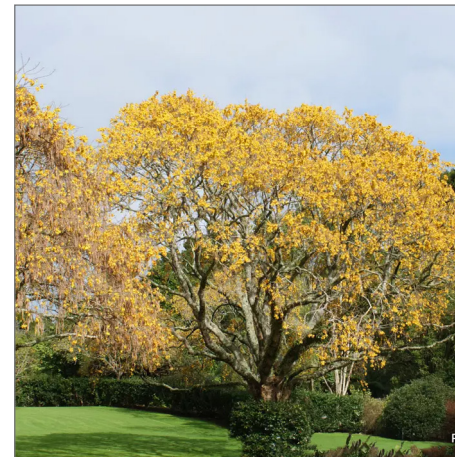
Tōtara
Podocarpus totara



Matai
Prumnopitys taxifolia



Lancewood
Pseudopanax crassifolius



South Island kōwhai
Sophora microphylla

15.1 Indicative native species

Large shrubs



Wineberry
Aristotelia serrata



Marble leaf
Carpodetus serratus



Thin-leaved coprosma
Coprosma areolata



Mingimingi
Coprosma propinqua



Pukio
Carex secta



Tree fuchsia
Fuchsia excorticata



Kaupuka
Griselinia littoralis



Rōhutui
Lophomyrtus obcordata



Mingimingi
Coprosma crassifolia



Mahoe
Melicytus ramiflorus subsp. ramiflorus



Kohūhū
Pittosporum tenuifolium



Red matipo - mapou
Myrsine australis



Five finger
Pseudopanax arboreus



Patē
Schefflera digitata

15.2 Indicative native species

Small shrubs / groundcovers



Hen & chicken fern
Asplenium bulbiferum



Bush flax
Astelia fragrans



Palm leaf fern
Blechnum novae zelandiae



Pukio
Carex secta



Marble leaf
Carpodetus serratus



New Zealand Clematis
Clematis paniculata



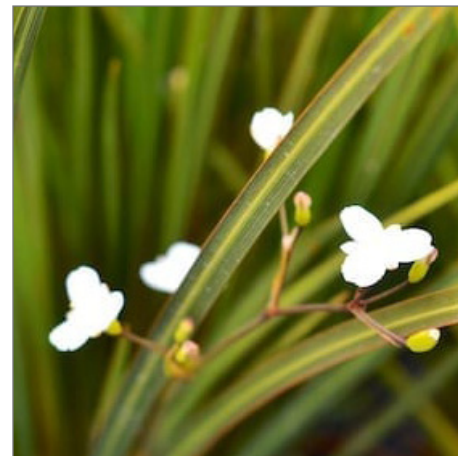
Thin-leaved coprosma
Coprosma areolata



Mingimingi
Coprosma crassifolia



Mingimingi
Coprosma propinqua



NZ Iris
Libertia ixioides



Pohuehue
Muehlenbeckia australis



Smooth shield fern
Parapolystichum glabellum



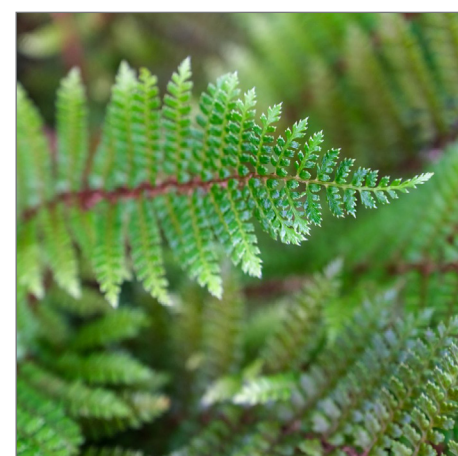
Five finger
Pseudopanax arboreus



Button fern
Pallaea rotundifolia



Shield fern
Polystichum neozelandicum subsp.
zerophyllum



Prickly Shield fern
Polystichum vestitum



Koromiko
Veronica salicifolia



Hounds tongue
Zealandia pustulata subsp. *pustulata*

15.3 Indicative native species



Piripiri
Acaena anserinifolia

16.0 Indicative exotic species

Specimen trees



Red maple
Acer rubrum



Himalayan white birch
Betula jacquemontii



Pin oak
Quercus palustris



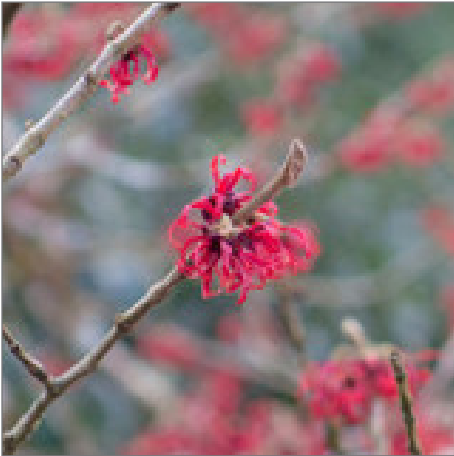
Red oak
Quercus rubra



Yoshino cherry
Prunus x yedoensis



Ornamental callery pear
Pyrus calleryana 'Aristocrat'



Witch hazel (red)
Hamamelis 'Diane'



Witch hazel (yellow)
Hamamelis Mollis

NOTE: Plants listed are indicative. Exact species to be confirmed at detailed design stage.

17.0 Materials Palette

Materials



Timaru bluestone split face cobblestone edging



Timaru bluestone pavers



Asphalt path



Corten steel

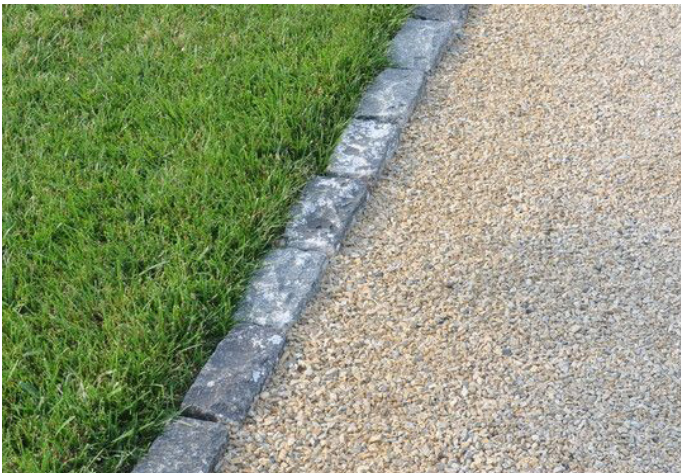


Timaru bluestone split face wall

Paving Typology



Split face rumble strip/threshold



Informal pedestrian route - crusher dust with 1 row split face bluestone edging



Primary vehicle route - asphalt with bluestone pavers



Primary pedestrian route -Timaru bluestone pavers with split face bluestone cobble edging

NOTE: Materials listed are indicative. Exact materials to be confirmed at detailed design stage.



To have your say

Email your comments on the draft landscape to:
parks@timdc.govt.nz

All comments must be received by Council by 10 September 2025.

Prepared for Timaru District Council by:

Landscape Architecture

Planning

