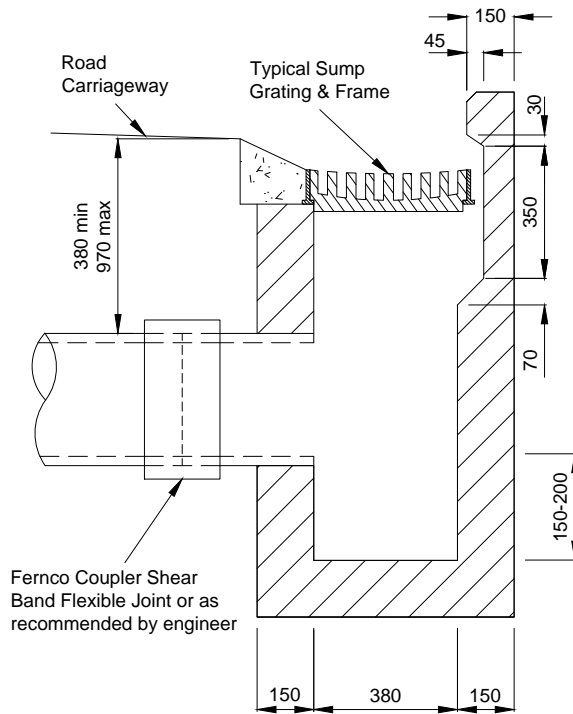


PLAN



SECTION A-A

Notes

1. Use Humes Precast Units (or similar approved) in conjunction with Standard Sump Grating and Frame.
2. All Stormwater laterals to be laid at -1.0% minimum grade.
3. Concrete strength 25 MPa

No.	REVISION	BY	CHK	APP.	DATE
B	Issued for Construction				11/15
A	Issued for Combined Maintenance Contract				7/15

TITLE:
SINGLE SUMP DETAIL
 MID-SOUTH CANTERBURY ROADING COLLABORATION

ORIGINAL SCALE (A4):	1:20
DRAWING NUMBER:	G-112
REVISION:	B
SHEET:	1 OF 1