

**TIMARU DISTRICT COUNCIL**  
**HISTORIC HERITAGE ITEM RECORD FORM**

---

**HERITAGE ITEM NAME** former Evans Atlas Flour Milling Company Grain Stores and Mill

**ADDRESS** 34-36 Turnbull Street, Timaru

**PHOTOGRAPH**



(Dr A McEwan, 9 July 2018)

**FORMER DISTRICT PLAN ITEM NO.** No. 42      **HNZ LIST No. & CATEGORY** 2056 / 2  
(at time of assessment)

**LEGAL DESCRIPTION** Lot 1 & 2 DP 15423

**VALUATION NUMBER** 2500047200

**DATE OF CONSTRUCTION** c.1879, 1888, 1895 & 1897 +

**ARCHITECT/DESIGNER/  
BUILDER** James Hislop, architect (1888 & 1897); Palliser & Jones, contractors (1888)

**STYLE** Industrial/commercial classicism

**PHYSICAL DESCRIPTION**

Multi-level building with irregular rectangular footprint and hipped and gabled roof forms. Built up against a bank, so the west elevation is one-and-a-half, two and three-storeys in height; east elevation has three, four and five-storey sections. Two-part east elevation has paired windows with shallow-arched heads, dentilled cornice, solid parapet and bays separated by brick pilasters. Two-storey gabled wing projects beyond façade on this elevation, which combines 1897 (south) and 1888 (north) wings. Loading bays at each level on east elevation of 1888 mill building. Southern portion of west-facing elevation (1897) overlooking Turnbull Street is symmetrical about a central entry with shallow-arched window openings and a moulded cornice. Half-basement windows are level with the footpath in this section. Lean-to along northern wall. Roof ventilators. Painted lettering on north elevation of former mill section gable reads 'EVANS 'ATLAS' FLOUR MILLING CO. LIMITED'.

**MATERIALS/STRUCTURE**

Brick, concrete, Oamaru stone, timber, corrugated iron/steel roofing.

**ADDITIONS/ALTERATIONS**

Smoke stack removed (date unknown). Additions and alterations to northern section, including new north wall addition (post-1925/mid-20<sup>th</sup> century). North wall rebuilt in concrete (c.1999).

## **SETTING**

The former flour mill stands on the east side of Turnbull Street, immediately west of the Timaru railway line. The port of Timaru lies to the north/north-east of the mill. The extent of setting is the land parcel on which the building is located.

## **HISTORY**

William Evans (1838-1930) was born in Ireland and emigrated to New Zealand in 1861. He set himself up in Timaru as a merchant in 1875, developing the former Atlas Foundry site (Flockton & Co foundry est. 1868) as premises for his coal, grain and timber business. Low grain prices in the late 1880s meant that Evans incurred losses on shipments of wheat, so he decided to start milling flour himself. Evans established the Atlas Roller Flour and Oatmeal Milling Company in 1888; he also had an interest in the Crown Roller Mills in Dunedin. The mill building was added to Evans' grain store in 1888, leaving the existing railway siding and turntable in place. In 1895 the company called tenders for excavating clay from the property and extensions to the building were subsequently made in 1895 and 1897. In 1905, and again in 1907, Evans advertised the flour mill for sale as a going concern. In 1907 the property consisted of four town sections, with a flour mill, three grain stores and cottages. The building was later taken over by the Timaru Milling Company, which milled pasta products in it in the later 20<sup>th</sup> century. Since 2005 new owners have undertaken strengthening and conservation of the building.

## **HISTORICAL AND SOCIAL SIGNIFICANCE**

The former Evans Atlas Flour Milling Company grain stores and mill have historical significance for their association with William Evans and, more generally, the history of flour milling in South Canterbury. The building is related historically to the former Atlas Chambers on Beswick Street (1909-10, heritage item # 26).

## **CULTURAL AND SPIRITUAL SIGNIFICANCE**

The former Evans Atlas Flour Milling Company grain stores and mill have cultural value as a demonstration of the way of life of its former mill operators over 115 years.

## **ARCHITECTURAL AND AESTHETIC SIGNIFICANCE**

The former Evans Atlas Flour Milling Company grain stores and mill have architectural significance as an industrial structure with classical detailing that was designed, in part, by architect James Hislop. Hislop (1859-1904) was a Scottish-born Dunedin architect who was also responsible for the 1890-91 additions to the Crown Milling Company building, in which William Evans had an interest. He opened an office in Timaru in 1887 but he was primarily based in Dunedin.

## **TECHNOLOGICAL AND CRAFTSMANSHIP SIGNIFICANCE**

The former Evans Atlas Flour Milling Company grain stores and mill have technological and craftsmanship significance for their brick construction and detailing. Thomas Jones and Charles Palliser commenced their building partnership in late 1885 and the firm later operated in Napier and Wellington.

## **CONTEXTUAL SIGNIFICANCE**

The former Evans Atlas Flour Milling Company grain stores and mill have high contextual significance as a landmark town centre structure and one of a number of large industrial structures that line the western boundary of the railway line as it passes through Timaru. The former mill building stands to the north of the former Belford Flour Mills (heritage item # 40), the former CFCA stores, and the former Timaru Milling Company mill (heritage item # 39). To the north of the former Evans Atlas Company stores and mill are the former McRae's grain

store (aka Landing Service building, heritage item # 44) and the Timaru Railway Station. The port of Timaru is to the west, over the railway lines.

## **ARCHAEOLOGICAL AND SCIENTIFIC SIGNIFICANCE**

As the former mill pre-dates 1900 its site has potential archaeological significance relating to the industrial development of the property and the early operation of the mill. It is not clear whether any part of the building pre-dates William Evans' tenure and could therefore be associated with the earlier Atlas Foundry (est. 1868).

## **SUMMARY OF HERITAGE SIGNIFICANCE**

The former Evans Atlas Flour Milling Company grain stores and mill have high overall heritage significance to Timaru and Timaru district as a whole. The building has historical significance for its association with William Evans and the history of flour milling in South Canterbury and cultural value as a demonstration of the way of life of those who owned and operated the grain stores and mill for over 115 years. The former Evans Atlas Flour Milling Company grain stores and mill have architectural significance as an industrial structure designed, in large part, by James Hislop and technological significance for their brick construction and detailing. The former Evans Atlas Flour Milling Company grain stores and mill have high contextual significance as a local landmark and their site has potential archaeological significance in view of its industrial use since 1868.

## **HERITAGE CATEGORY**

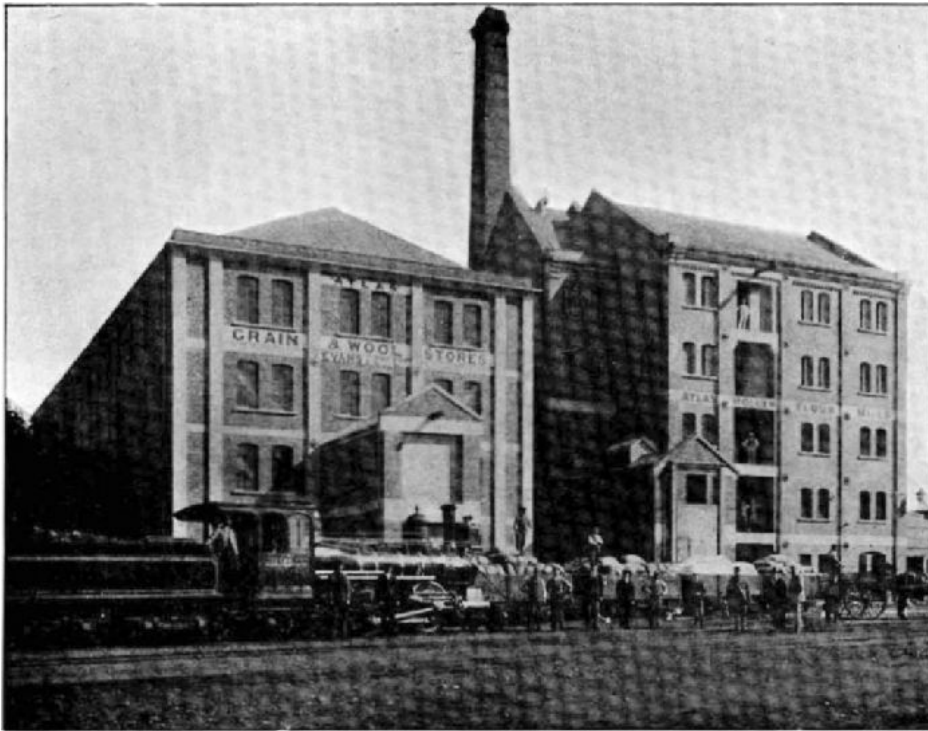
**A**

## **REFERENCES**

- *Timaru Herald* 3 June 1868, p. 2; 8 November 1872, p. 2; 7 May 1873, p. 3; 25 February 1874, p. 3; 8 March 1875, pp. 2 & 3; 11 October 1875, p. 2; 4 January 1876, p. 3; 22 April 1876, p. 1; 3 December 1878, p. 2; 15 May 1879, p. 4; 16 March 1883, p. 2; 22 February 1886, p. 2; 10 April 1886, p. 2; 3 March 1887, p. 2; 2 September 1887, p. 1; 15 February 1888, p. 1; 31 March 1888, p. 3; 13 April 1889, p. 4; 13 May 1895, p. 2; 23 August 1895, p. 2; 31 July 1896, p. 1; 3 February 1897, p. 2; 6 May 1897, p. 1; 21 November 1898, p. 1; 25 January 1905, p. 2; 26 November 2009 & 27 July 2016 (available online).
- *Lyttleton Times* 23 February 1891, p. 6.
- *North Otago Times* 9 June 1868, p. 2.
- *South Canterbury Times* 4 March 1887, p. 3; 27 May 1887, p. 3; 24 February 1888, p. 3.
- *Press* 15 February 1892, p. 6.
- *Temuka Leader* 13 February 1883, p. 2; 7 December 1899, p. 2; 8 October 1907, p. 2; 4 March 1930, p. 3.
- *Otago Daily Times* 16 January 1889, p. 4; 1 July 1893, p. 3.
- *Evening Star* 24 August 1891, p. 2.
- *Cyclopedia of New Zealand - Canterbury Provincial District* Christchurch, 1903 (available online).
- N Crawford 'In a Land of Wheat: Timaru's Flourmills' *The Past Today - Historic Places in New Zealand* (ed. J Wilson) Auckland, 1987.
- <http://www.heritage.org.nz/the-list/details/2056>
- <http://www.heritage.org.nz/the-list/details/366>
- <https://teara.govt.nz/en/agricultural-processing-industries/page-5>
- <https://teara.govt.nz/en/agricultural-processing-industries/page-6>

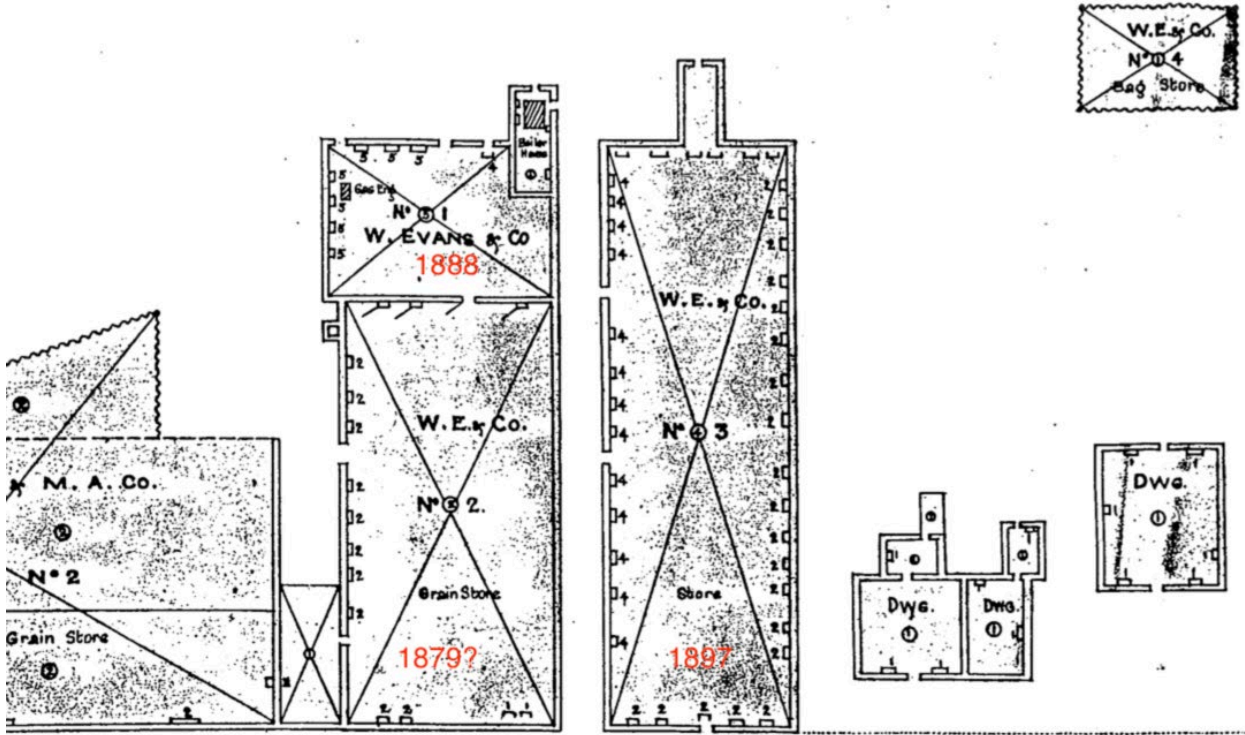


Extent of setting, 34-36 Turnbull Street, Timaru.



**ATLAS ROLLER FLOUR MILLS.**

*Cyclopedia of New Zealand – Canterbury Provincial District 1903, p. 1015.*



### TURNBULL STREET

Detail of 1925 block plan (South Canterbury Museum) with different stages identified by date.