

# Timaru District Plan

## Significant Tree Assessment Form

**Botanical Name:** *Fagus sylvatica* 'Purpurea'

**Common Name:** Copper Beech

**Year Planted** \_\_\_\_\_ **Age or (approx)**

**Planted by** \_\_\_\_\_

**Notable Tree Measurements**

**Height calculation method** \_\_\_\_\_

**Single Tree** Height of Tree: 30.5 metres

Spread of canopy: 14 x 16.5 metres

Girth of trunk: 2970 mm

Girth measured at: 1400 mm

*Girth measured at ground level (gl.) or at 600mm or at 1m or at 1.40m*

**Stand** (same species) or **Group** (mixed species)

No. of trees \_\_\_\_\_

Maximum height \_\_\_\_\_

Minimum height \_\_\_\_\_

Average height \_\_\_\_\_

Area covered \_\_\_\_\_

**STEM Evaluation Score** \_\_\_\_ 153 \_\_\_\_

STEM value (optional) \_\_\_\_\_

*(for STEM Evaluation and Descriptive Notes, see reverse page)*

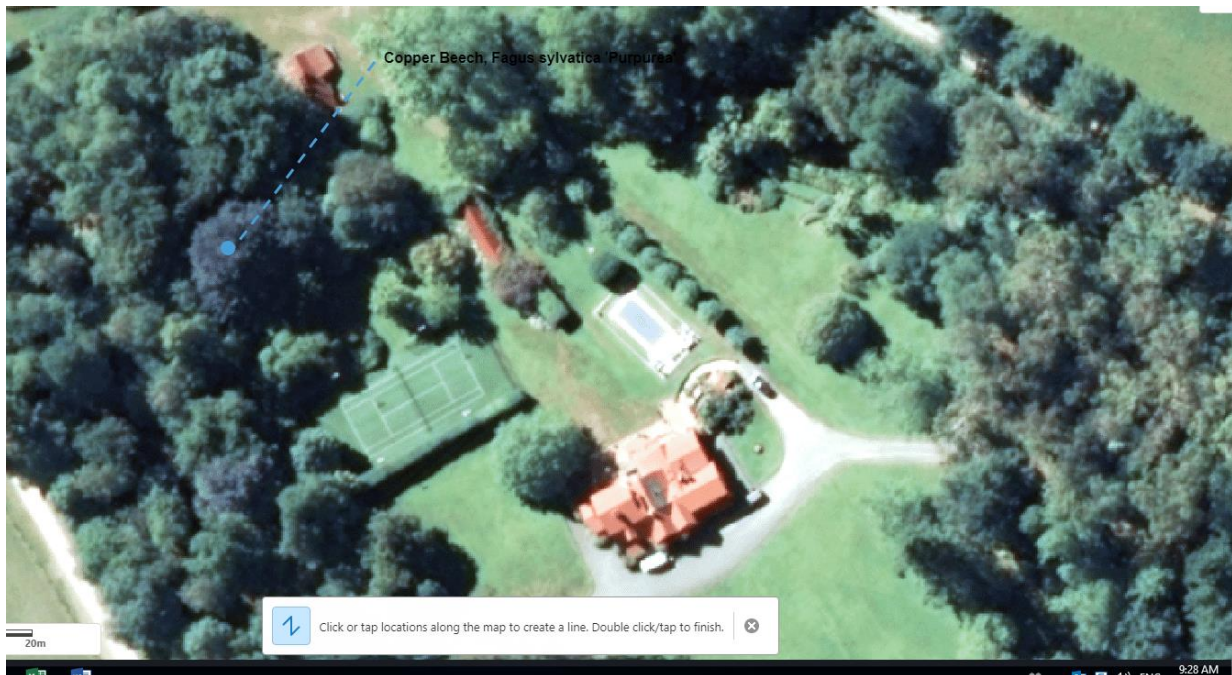
**Location**

Address: Dennistoun Road Peel Forest

Locality: Peel Forest Estate

Legal Description of Land: Part RS 3311

**Photograph**





Assessment by: Peter Thomson + Steve Sullivan

Date: 27/07/2018

**STEM:** (Standard Tree Evaluation Method 1996 Pub. Flook)

**Tree Evaluation Score Sheet**

Condition Evaluation						
Points	3	9	15	21	27	Score
Form	Poor	Moderate	Good	Very good	Specimen	21
Occurrence	Predominant	Common	Infrequent	Rare	Very rare	9
Vigour/Vitality	Poor	Some	Good	Very good	Excellent	21
Function	Minor	Useful	Important	Significant	Major	9
Age (years)	10 +	20 +	40 +	80 +	100 +	21
<b>Subtotal Points</b>						<b>81</b>

Amenity Evaluation						
Points	3	9	15	21	27	Score
Stature (m)	3 to 8	9 to 14	15 to 20	21 to 26	27 +	27
Visibility (km)	0.5	1	2	4	8	9
Proximity	Forest	Parkland	Group 10+	Group 3+	Solitary	9
Role	Minor	Moderate	Important	Significant	Major	9
Climate	Minor	Moderate	Important	Significant	Major	3
<b>Subtotal Points</b>						<b>57</b>

Notable Evaluation						
Recognition	Local	District	Regional	National	International	Score
Points	3	9	15	21	27	
<b>Stature</b>						
					• Feature	
					• Form	15
<b>Historic</b>						
					• Age 100+	
					• Association	
					• Commemoration	
					• Remnant	
					• Relic	
<b>Scientific</b>						
					• Source	
					• Rarity	
					• Endangered	
<b>Subtotal Points</b>						<b>15</b>
<b>Total Points</b>						<b>153</b>
<b>Notes</b>						
Tree nominated by owner (Graham Carr) while we were on site assessing other trees.						