

TIMARU DISTRICT SIGNIFICANT NATURAL AREAS

ROADSIDE SNA SURVEY 2022

SNA 986

Road: Levels Valley Road

Side of Road: north

Map Reference (NZTM): 1449658E-5092673N

Ecological District: Waimate

Nearest Locality: Pleasant Point

Adjacent Property: 24820-01500

Size: 23m²

Level IV Land Environment: N3.1b



Description:

A single ti/cabbage tree (*Cordyline australis*) in rank (un-grazed) exotic grassland, adjacent to the property boundary.

Notable Species:

No listed 'at risk' or 'threatened' species were observed. Cabbage trees are now rare in this part of the Waimate Ecological District.



Significance Assessment:

Assessment against Canterbury Regional Policy Statement Appendix 3 criteria:

Criteria	Rank	Assessment
Representativeness	M	1. A degraded example of indigenous vegetation, representing all that remains in this part of the ecological district.
Rarity/Distinctiveness	H	3. Indigenous vegetation/habitat that has been reduced to less than 20% of its former extent in the ecological district.
Diversity and Pattern	L	A very low diversity of indigenous ecosystems, habitat types, or taxa.
Ecological Context	L	Vegetation/habitat that does not provide or contribute to an important ecological linkage or buffering, and does not provide important habitat for indigenous species.

Assessment against Timaru District Plan Part B criteria:

Primary Criteria	Rank	Assessment
Representativeness	M	A depleted example of indigenous vegetation which is typical of that remaining in the ecological district.
Rarity	M	The area supports an indigenous species that is now rare in this part of the ecological district.
Diversity and Pattern	L/M	A substantially depleted indigenous plant community.

Distinctiveness/Special Features	L	The area does not support species at distributional limits, intact sequences, or provide important fauna habitat.
Other Criteria		
Size/Shape	L	The area is small and poorly buffered.
Connectivity	L	The area is isolated from other areas of indigenous vegetation/habitat and does not form an important part of a network of fauna habitat.
Sustainability	M	The area is modified, but the indigenous vegetation (cabbage tree) is resilient.

The area is significant when assessed against the Canterbury Regional Policy Statement criteria, principally because it supports indigenous vegetation that has been reduced to less than 20% of its former extent in the ecological district.

Condition and Management:

The cabbage tree appears healthy. The tree should be protected from stock damage. Any application of herbicide to control weed species should avoid the cabbage tree.

TIMARU DISTRICT SIGNIFICANT NATURAL AREAS

ROADSIDE SNA SURVEY 2022

SNA 987

Road: Levels Valley Road

Side of Road: north

Map Reference (NZTM): 1449340E-5092459N

Ecological District: Waimate

Nearest Locality: Pleasant Point

Adjacent Property: 24820-01500

Size: 24m²

Level IV Land Environment: N3.1b



Description:

A single ti/cabbage tree (*Cordyline australis*) in rank (un-grazed) exotic grassland, adjacent to the property boundary.

Notable Species:

No listed 'at risk' or 'threatened' species were observed. Cabbage trees are now rare in this part of the Waimate Ecological District.



Significance Assessment:

Assessment against Canterbury Regional Policy Statement Appendix 3 criteria:

Criteria	Rank	Assessment
Representativeness	M	1. A degraded example of indigenous vegetation, representing all that remains in this part of the ecological district.
Rarity/Distinctiveness	H	3. Indigenous vegetation/habitat that has been reduced to less than 20% of its former extent in the ecological district.
Diversity and Pattern	L	A very low diversity of indigenous ecosystems, habitat types, or taxa.
Ecological Context	L	Vegetation/habitat that does not provide or contribute to an important ecological linkage or buffering, and does not provide important habitat for indigenous species.

Assessment against Timaru District Plan Part B criteria:

Primary Criteria	Rank	Assessment
Representativeness	M	A depleted example of indigenous vegetation which is typical of that remaining in the ecological district.
Rarity	M	The area supports an indigenous species that is now rare in this part of the ecological district.
Diversity and Pattern	L/M	A substantially depleted indigenous plant community.

Distinctiveness/Special Features	L	The area does not support species at distributional limits, intact sequences, or provide important fauna habitat.
Other Criteria		
Size/Shape	L	The area is small and poorly buffered.
Connectivity	L	The area is isolated from other areas of indigenous vegetation/habitat and does not form an important part of a network of fauna habitat.
Sustainability	M	The area is modified, but the indigenous vegetation (cabbage tree) is resilient.

The area is significant when assessed against the Canterbury Regional Policy Statement criteria, principally because it supports indigenous vegetation that has been reduced to less than 20% of its former extent in the ecological district.

Condition and Management:

The cabbage tree appears healthy. The tree should be protected from stock damage. Any application of herbicide to control weed species should avoid the cabbage tree.

TIMARU DISTRICT SIGNIFICANT NATURAL AREAS

ROADSIDE SNA SURVEY 2022

SNA 988

Road: Levels Valley Road

Side of Road: east

Map Reference (NZTM): 1447322E-5091532N

Ecological District: Waimate

Nearest Locality: Pleasant Point

Adjacent Property: 24820-01700

Size: 61m²

Level IV Land Environment: N3.3a



Description:

A small strip of vegetation containing a single ti/cabbage tree (*Cordyline australis*), a single kohuhu (*Pittosporum tenuifolium*) and bracken (*Pteridium esculentum*). Also present are wild plum trees. Surrounding vegetation is rank grassland dominated by cocksfoot (*Dactylis glomerata*) with patches of Californian thistle (*Cirsium arvense*). Kohuhu trees adjacent to a dwelling on the west side of the road appear to have been planted.

Notable Species:

No listed 'at risk' or 'threatened' species were observed. Indigenous vegetation is now rare in this part of the Waimate Ecological District.



Significance Assessment:

Assessment against Canterbury Regional Policy Statement Appendix 3 criteria:

Criteria	Rank	Assessment
Representativeness	M	1. A degraded example of indigenous vegetation, representing all that remains in this part of the ecological district.
Rarity/Distinctiveness	H	3. Indigenous vegetation/habitat that has been reduced to less than 20% of its former extent in the ecological district.
Diversity and Pattern	L	A very low diversity of indigenous ecosystems, habitat types, or taxa.
Ecological Context	L	Vegetation/habitat that does not provide or contribute to an important ecological linkage or buffering, and does not provide important habitat for indigenous species.

Assessment against Timaru District Plan Part B criteria:

Primary Criteria	Rank	Assessment
Representativeness	M	A depleted example of indigenous vegetation which is typical of that remaining in the ecological district.
Rarity	M	The area supports an indigenous species that is now rare in this part of the ecological district.
Diversity and Pattern	L/M	A substantially depleted indigenous plant community.

Distinctiveness/Special Features	L	The area does not support species at distributional limits, intact sequences, or provide important fauna habitat.
Other Criteria		
Size/Shape	L	The area is small and poorly buffered.
Connectivity	L	The area is isolated from other areas of indigenous vegetation/habitat and does not form an important part of a network of fauna habitat.
Sustainability	M	The area is modified, but the indigenous vegetation is resilient.

The area is significant when assessed against the Canterbury Regional Policy Statement criteria, principally because it supports indigenous vegetation that has been reduced to less than 20% of its former extent in the ecological district.

Condition and Management:

The cabbage tree and kohuhu appear healthy. Wild plum trees dominate the site. Any application of herbicide to control weed species should avoid the indigenous vegetation.

TIMARU DISTRICT SIGNIFICANT NATURAL AREAS

ROADSIDE SNA SURVEY 2022

SNA 989

Road: Levels Valley Road

Side of Road: north-west

Map Reference (NZTM): 1446435E-5090466N

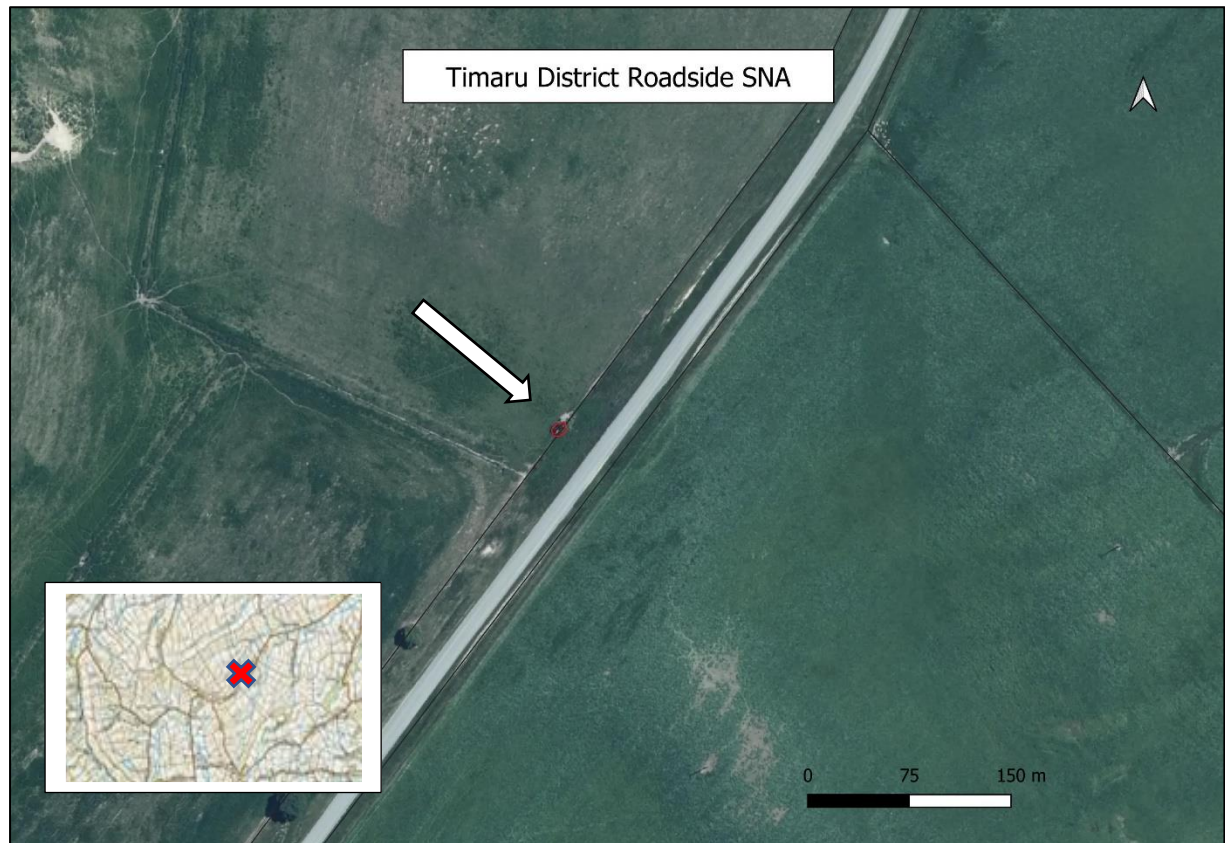
Ecological District: Waimate

Nearest Locality: Pleasant Point

Adjacent Property: 24820-03700

Size: 13m²

Level IV Land Environment: N3.3a



Description:

A single twin-trunk ti/cabbage tree (*Cordyline australis*) in rank (un-grazed) exotic grassland, adjacent to the property boundary. A single (sprayed) gorse bush is present nearby.

Notable Species:

No listed 'at risk' or 'threatened' species were observed. Cabbage trees are now rare in this part of the Waimate Ecological District.



Significance Assessment:

Assessment against Canterbury Regional Policy Statement Appendix 3 criteria:

Criteria	Rank	Assessment
Representativeness	M	1. A degraded example of indigenous vegetation, representing all that remains in this part of the ecological district.
Rarity/Distinctiveness	H	3. Indigenous vegetation/habitat that has been reduced to less than 20% of its former extent in the ecological district.
Diversity and Pattern	L	A very low diversity of indigenous ecosystems, habitat types, or taxa.
Ecological Context	L	Vegetation/habitat that does not provide or contribute to an important ecological linkage or buffering, and does not provide important habitat for indigenous species.

Assessment against Timaru District Plan Part B criteria:

Primary Criteria	Rank	Assessment
Representativeness	M	A depleted example of indigenous vegetation which is typical of that remaining in the ecological district.
Rarity	M	The area supports an indigenous species that is now rare in this part of the ecological district.
Diversity and Pattern	L/M	A substantially depleted indigenous plant community.

Distinctiveness/Special Features	L	The area does not support species at distributional limits, intact sequences, or provide important fauna habitat.
Other Criteria		
Size/Shape	L	The area is small and poorly buffered.
Connectivity	L	The area is isolated from other areas of indigenous vegetation/habitat and does not form an important part of a network of fauna habitat.
Sustainability	M	The area is modified, but the indigenous vegetation (cabbage tree) is resilient.

The area is significant when assessed against the Canterbury Regional Policy Statement criteria, principally because it supports indigenous vegetation that has been reduced to less than 20% of its former extent in the ecological district.

Condition and Management:

The cabbage tree appears healthy. The tree should be protected from stock damage. Any application of herbicide to control weed species (such as gorse) should avoid the cabbage tree.