

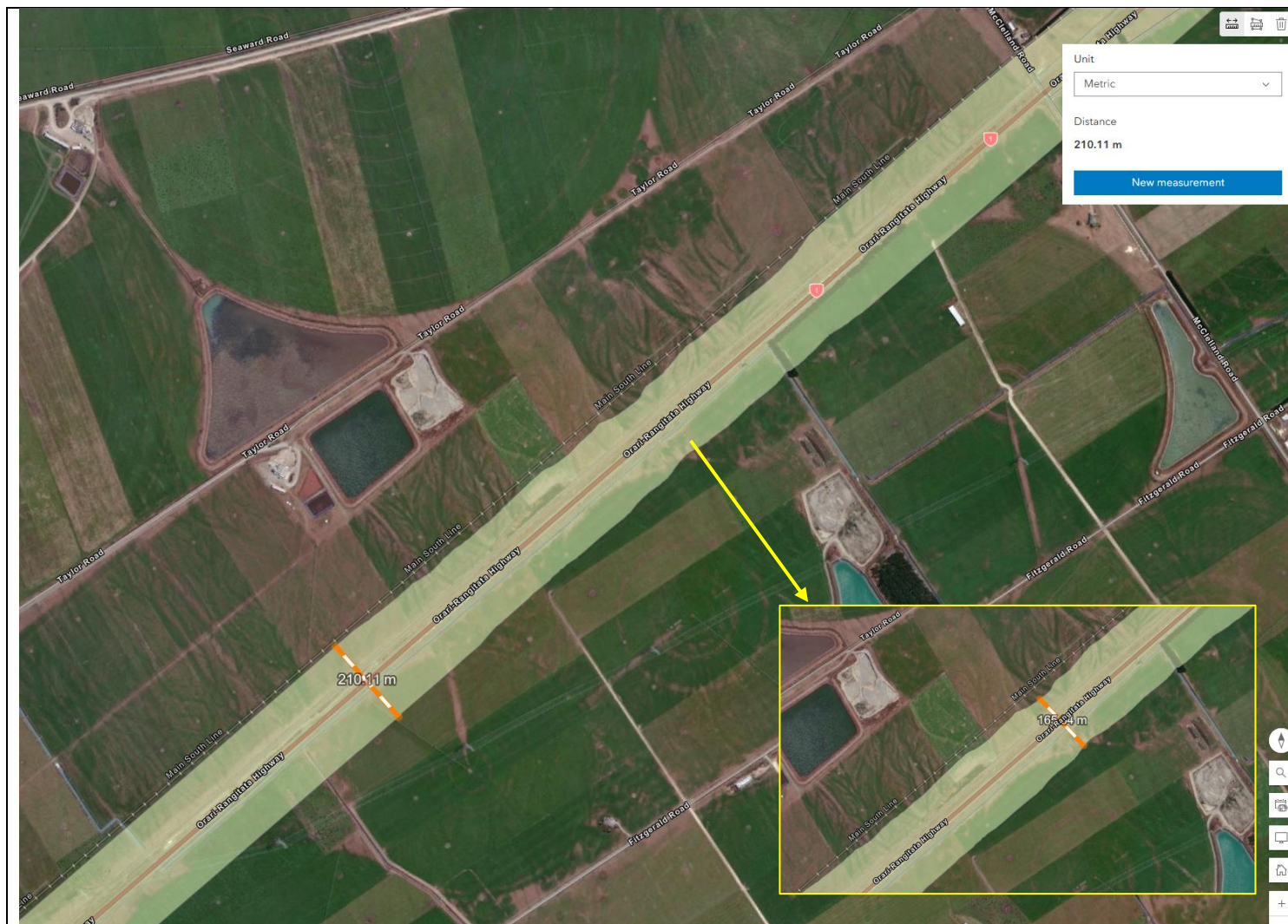
State Highway 1



Northern end of SH1 with a modelled noise overlay of approximately 210m in width, which is made up of two 5m wide carriageways and 100m on either side of the carriageway.

The SH1 and SH79 intersection shows where the modelled contour distances decrease due to either existing dwellings, change in land contours, change in traffic, or change in operating speed.

The SH79 contours are approximately 40m in each direction from the edge of the sealed carriageway.



Majority of the distance is 100m from the edge of the sealed carriageway on each side of SH1.

The centre of the image shows the variable contours ranging between 80m-100m.



Unit
Metric

Distance
210.22 m

New measurement





Variable noise contours throughout Orari ranging from 30m to 80m from the edge of the sealed carriageway.

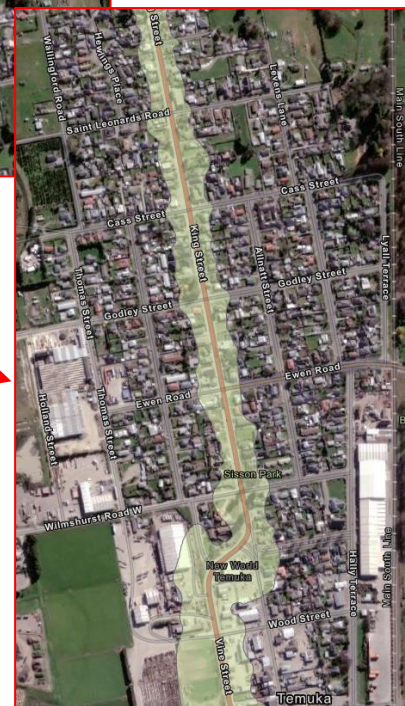


Primarily 100m from the edge of the sealed carriageway on each side of SH1.



Variable noise contours are up to 100m from the edge of the sealed carriageway on each side of SH1. The contours reduce within Winchester due to lower speeds and range from 20m to 50m in each direction from the sealed edge of the carriageway.





Up to 100m from the edge of the sealed carriageway in the high speed environments reducing through Temuka where there are lower speeds, which range from 30-90m (90m on the northern entry on the eastern side where the land use is primarily rural).



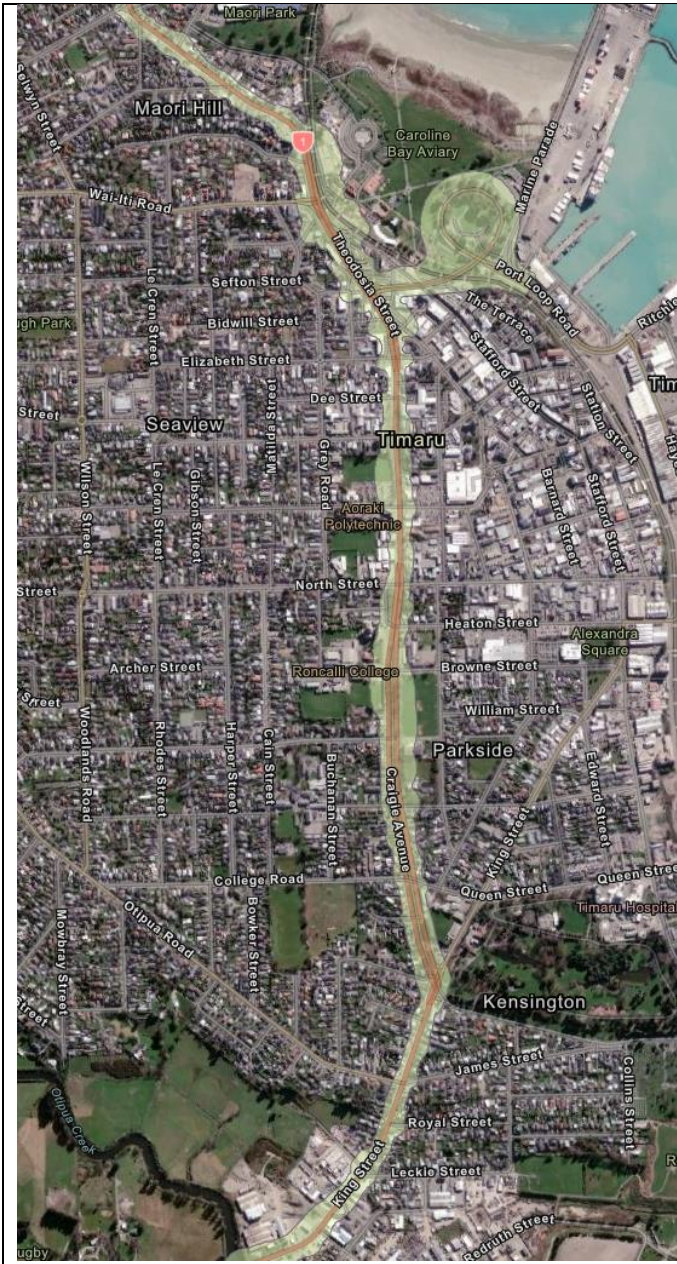


Variable noise contours are primarily 100m from the edge of the sealed carriageway. This reduces where there is a cluster of residential on the eastern side, which is approximately 60m from the edge of the sealed SH1 carriageway.

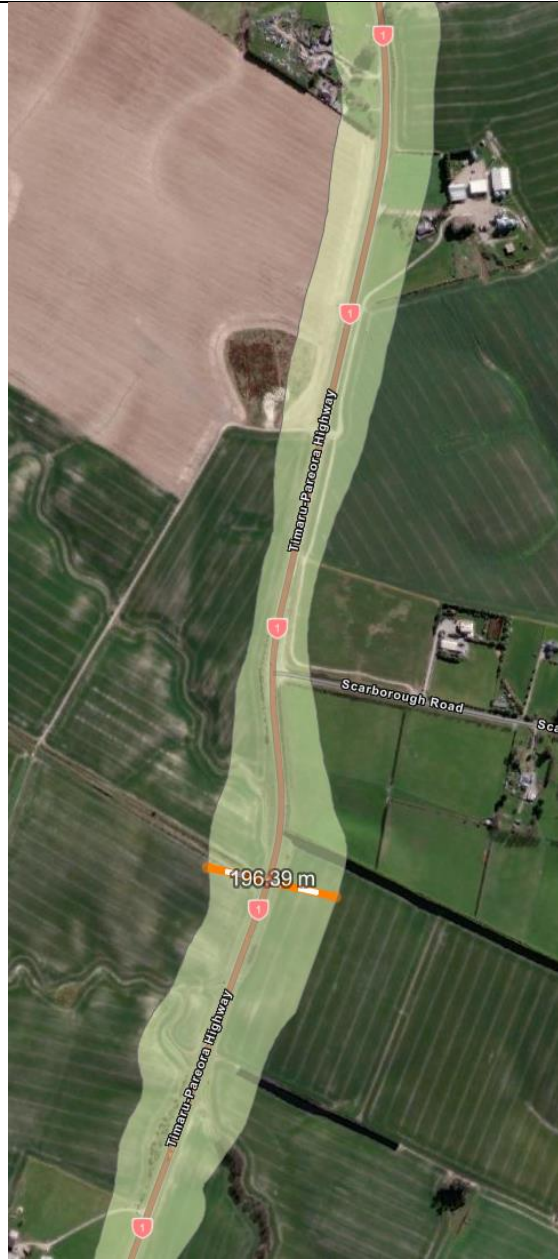










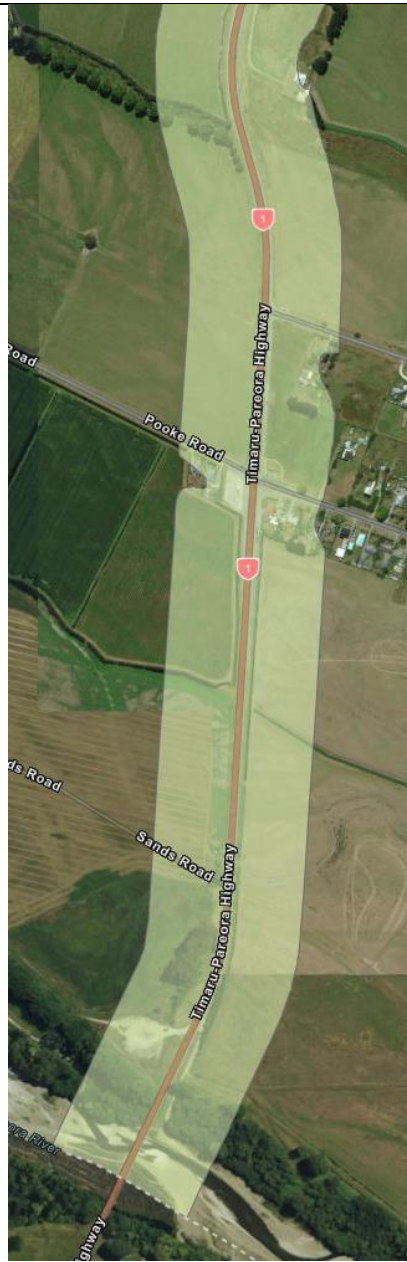


Distance ranges from approximately 40m to 100m from the edge of the sealed carriageway.









State Highway 79





Noise contours ranging from approximately 20m to 45m from the edge of the sealed carriageway.



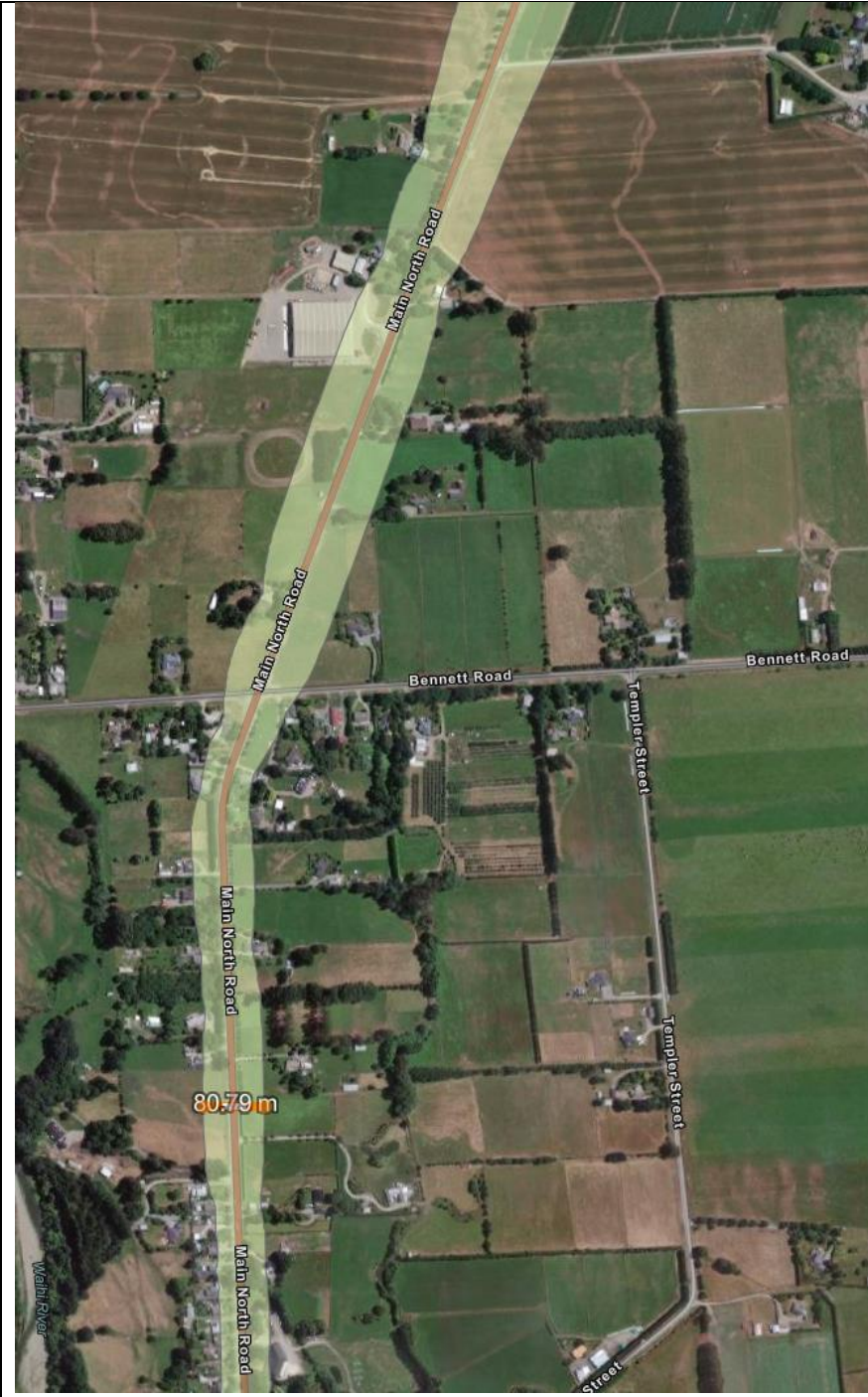
Distance is primarily 40m in each direction from the edge of the sealed carriageway. Slight variations can be seen when zoomed in.



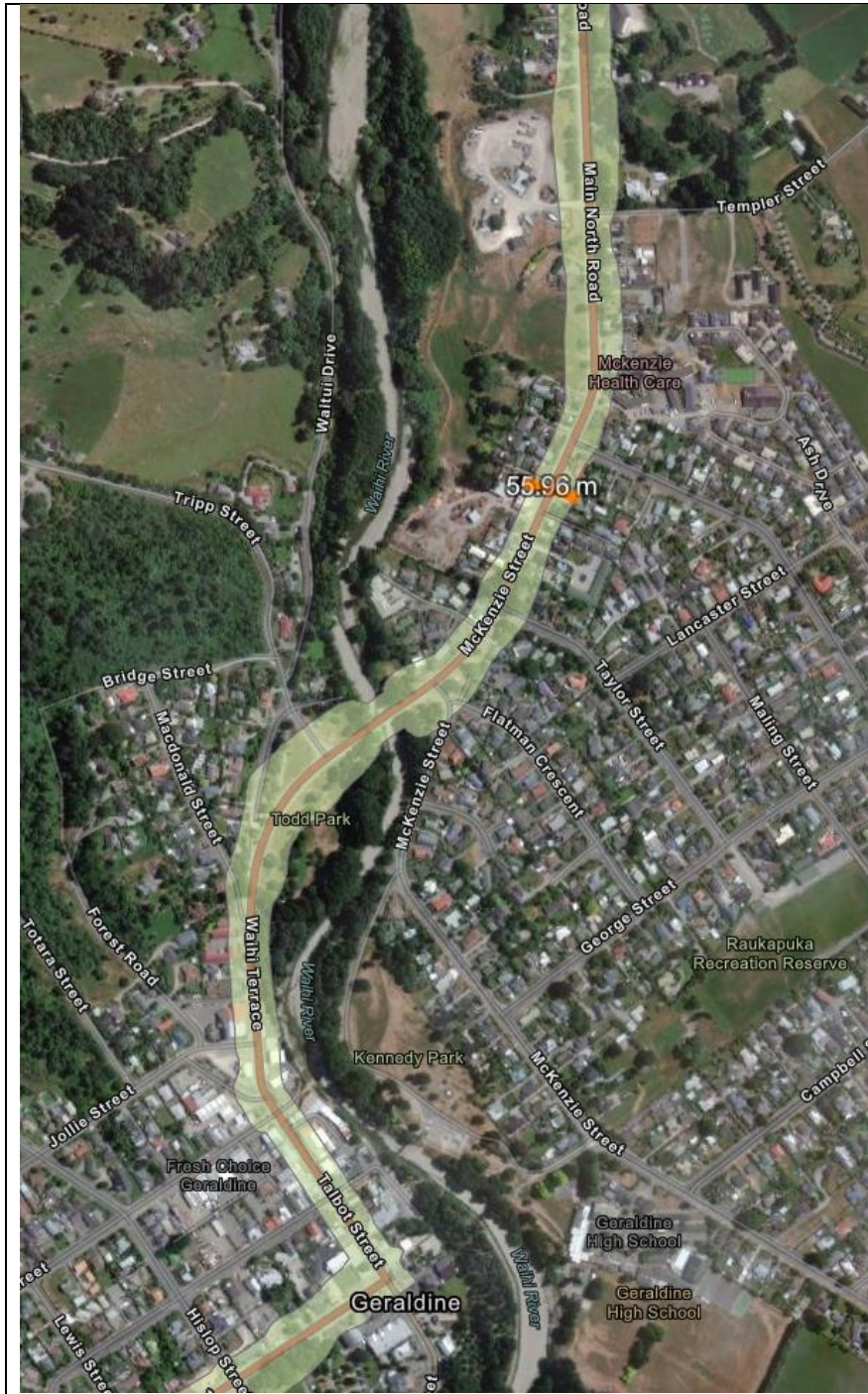
--	--

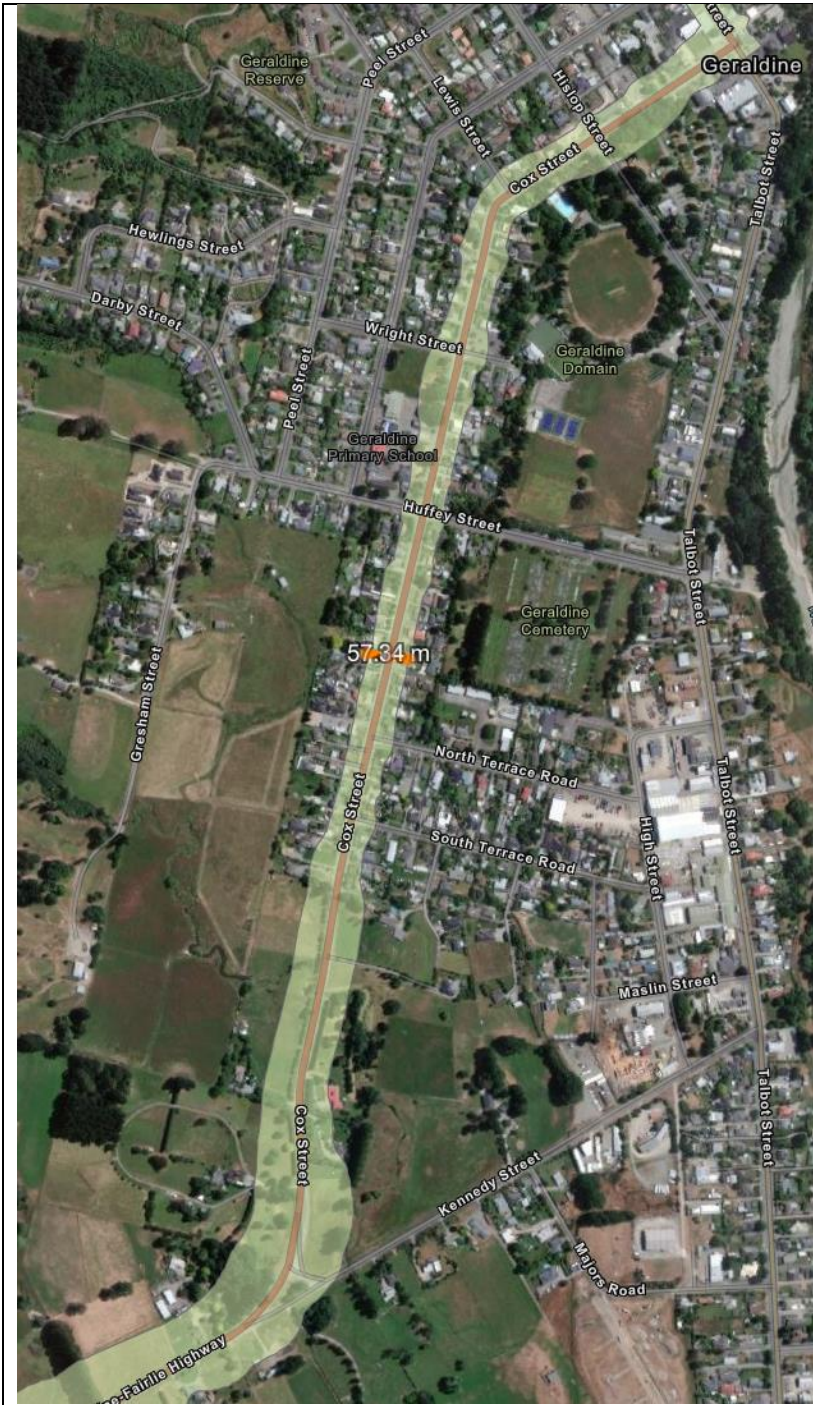


Distances are approximately 80m on each side of SH79 reducing towards the south.



--





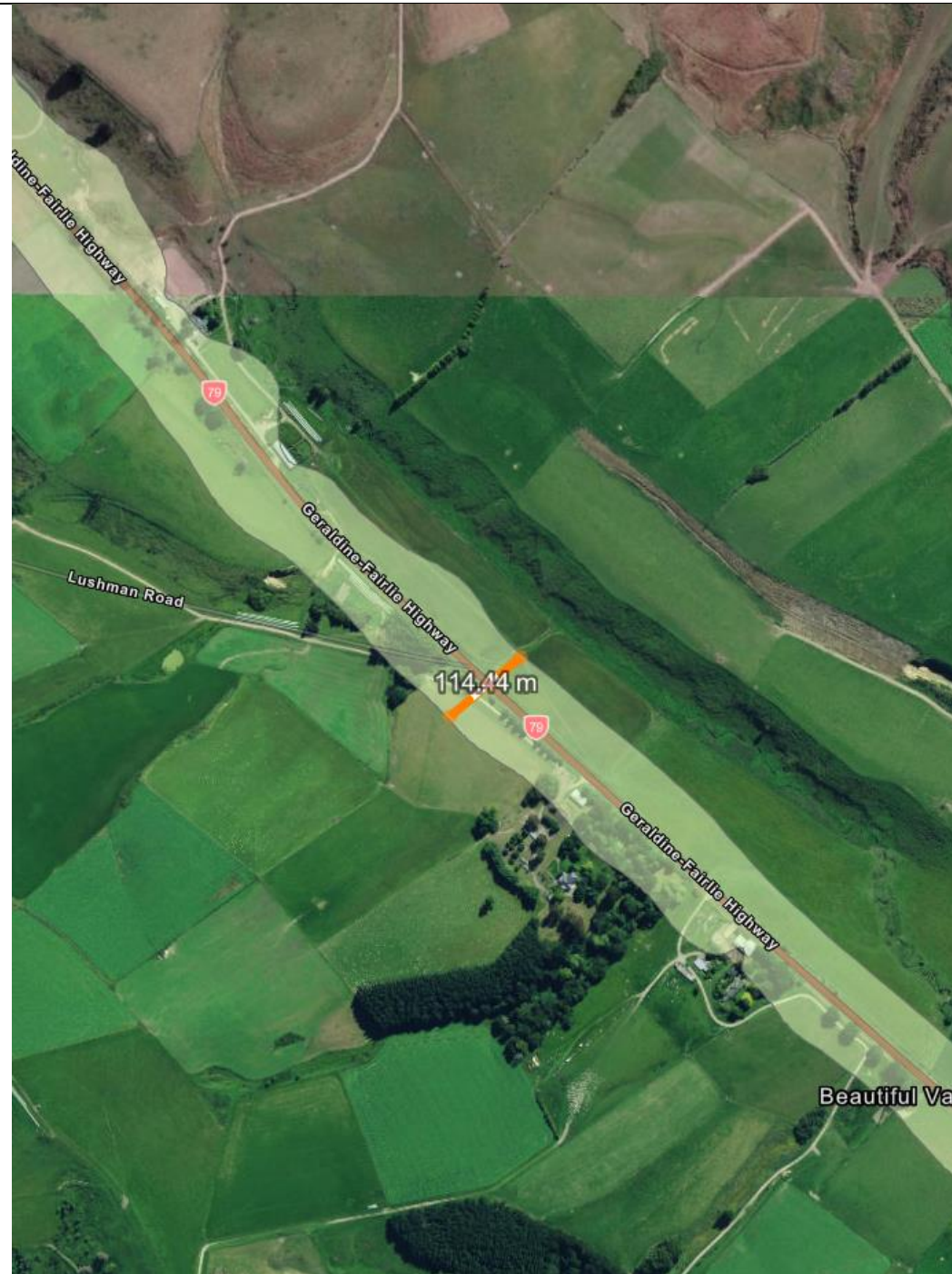








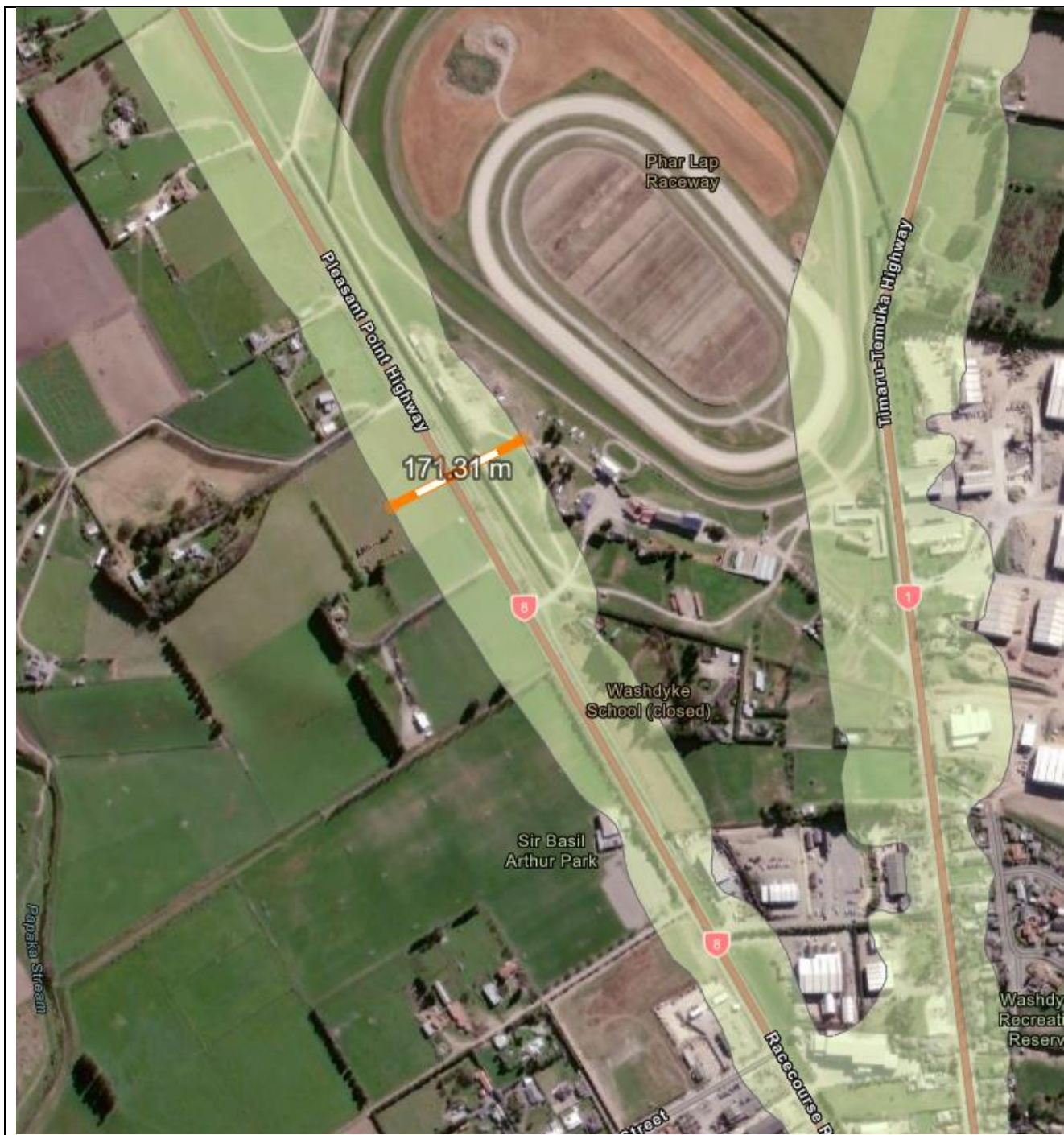






Distances on the eastern side of the state highway are up to a 100m from the edge of the sealed carriageway, while the western side is approximately 30-50m.







The western side of the highway is approximately 70m to 75m from the edge of the sealed carriageway while the eastern side is approximately 65m to 70m.











