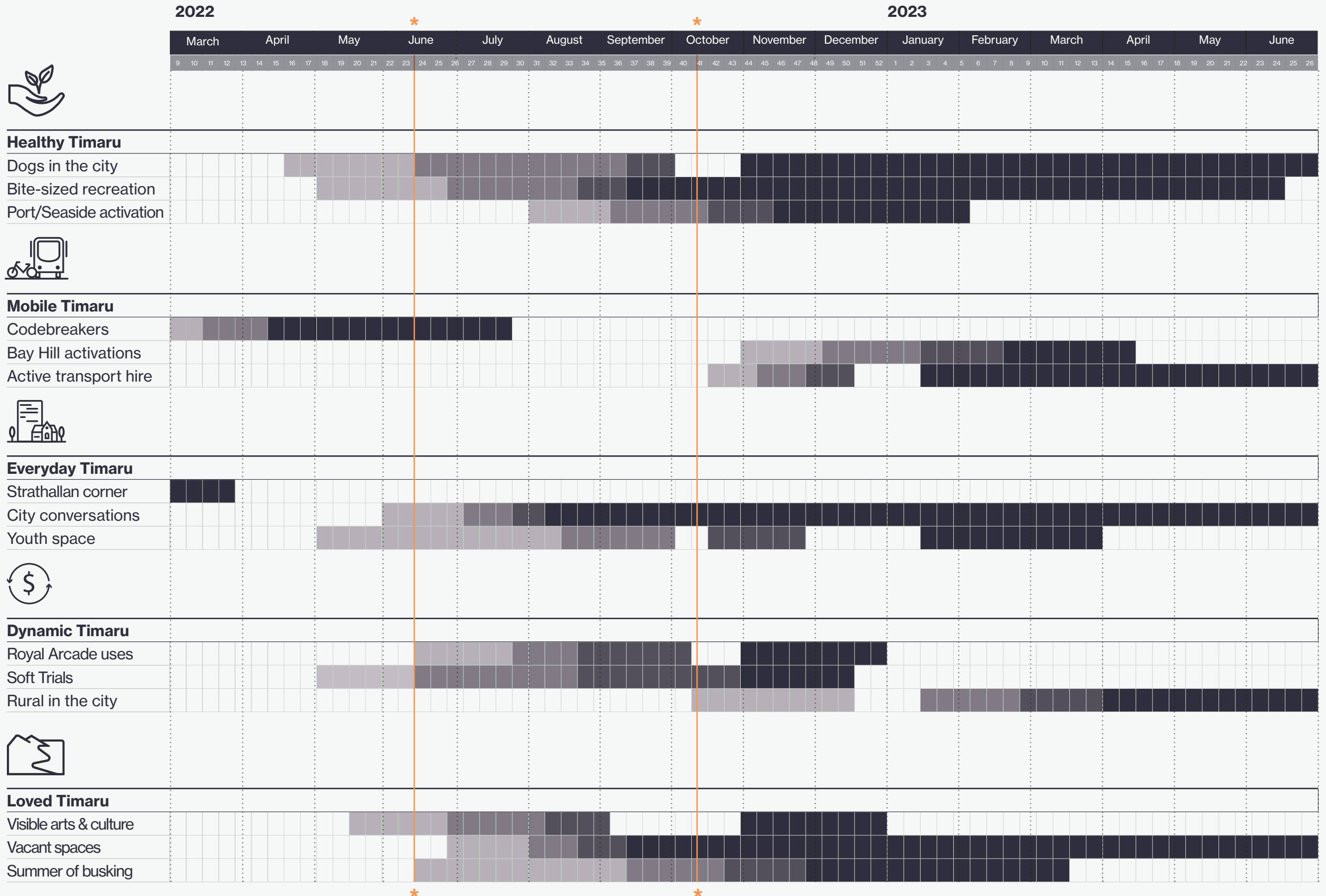


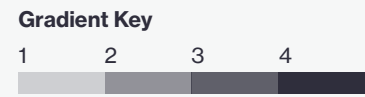
EXPLORATORY TRIALS PROGRAMME

Not all of these projects will proceed through to delivery.

They will first be tested through scoping and early design before Council decides whether to proceed with delivery of the trial.



* Decision point to confirm which exploratory trials to progress through to delivery (approx 3-5)

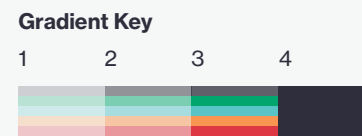


- 1 - Concept scoping
- 2 - Preliminary design
- 3 - Developed design
- 4 - Trial Delivery Window

TARGETED TRIALS PROGRAMME

Not all of these projects will proceed through to delivery. They will first be tested at a concept scoping and preliminary design phase before council decides whether or not to proceed with the delivery of the trial.

We will start with easy and short temporary trails then progress to 'bigger' trials.



- x - Council committee approvals & public comms

	Number on map	Overlap with exploratory trials	Potentially Streets for people funded	Event street activation	Tactical intervention
--	---------------	---------------------------------	---------------------------------------	-------------------------	-----------------------

OTHER					
Supporting all trials					
Kit of parts	0	●	●	●	●
GREEN WEAVE					
Address State Highway barrier/crossings					
SH1 Theodosia St /Arthur St	1		●		
SH78 Sefton St/Bay Hill Inter	2		●		●
Pull green into the centre					
Strathallan Street Greenway	3	●			●
Station Street Greenway	4	●			●
George Street Greenway	5	●			●
COASTLINE CONNECTION					
Get us to the water					
Port Loop Road shared path	6	●	●		
Create a waterfront experience					
Marine Parade Promenade	7	●			
WELCOME HOME					
Support finer grain retail					
Pedestrian-friendly laneways	8	●		●	
Improve mobility in the centre					
Pedestrian focused Stafford Street trials	9				●
THE HEART WITHIN					
Enhance vibrant streets & open spaces					
Station Street - one way trial and street activation	10	●		●	
Pedestrianise Bay Hill & Street activation	11	●		●	

