



# **ATTACHMENTS MINUTES**

**Ordinary Council Meeting**

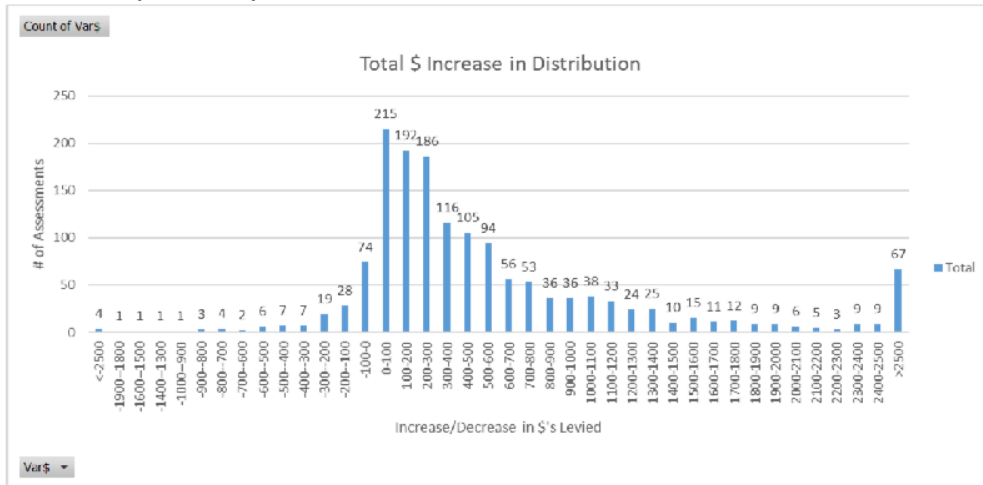
**Monday, 31 May 2021**



## Table of Contents

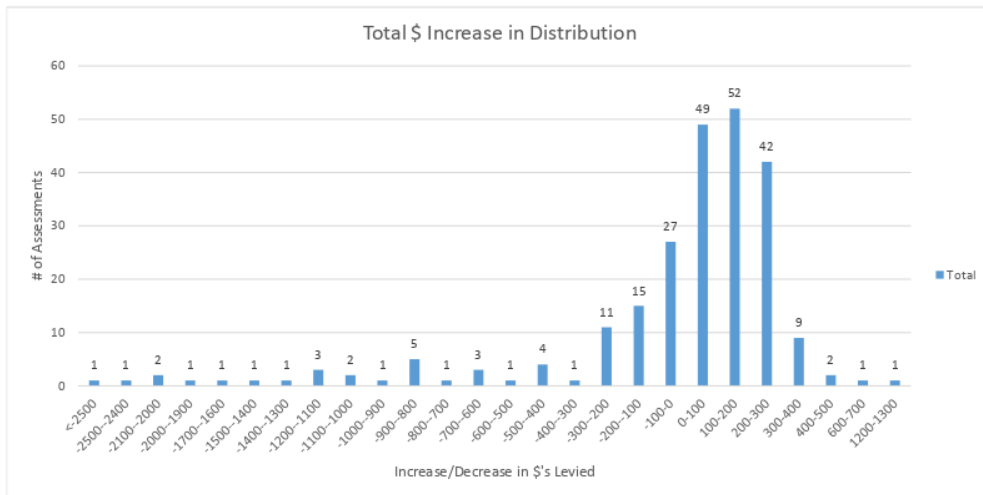
7.1	Long Term Plan Consultation 2021-31 - Receipt of Submissions and Hearing	
	Attachment 1 Council Long Term Plan Hearing - 29 May 2021 - Attachment - Variance Distribution - Across Differential Categories .....	4
	Attachment 2 Long Term Plan Hearing - Submitters Handouts Day 1 and 2.....	6
	Attachment 3 Long Term Plan Hearing - Michael Richardson's Handout.....	46
	Attachment 4 CPlay plans .....	49
	Attachment 5 CPlay Plans.....	50
8	Long Term Plan Deliberation	
	Attachment 1 Rates Impact Summary of Scenarios x3 for Long Term Plan hearing 31 May 2021.....	51

**Variance Distribution - Across Differential Categories**  
**Commercial, industrial, accomodation**



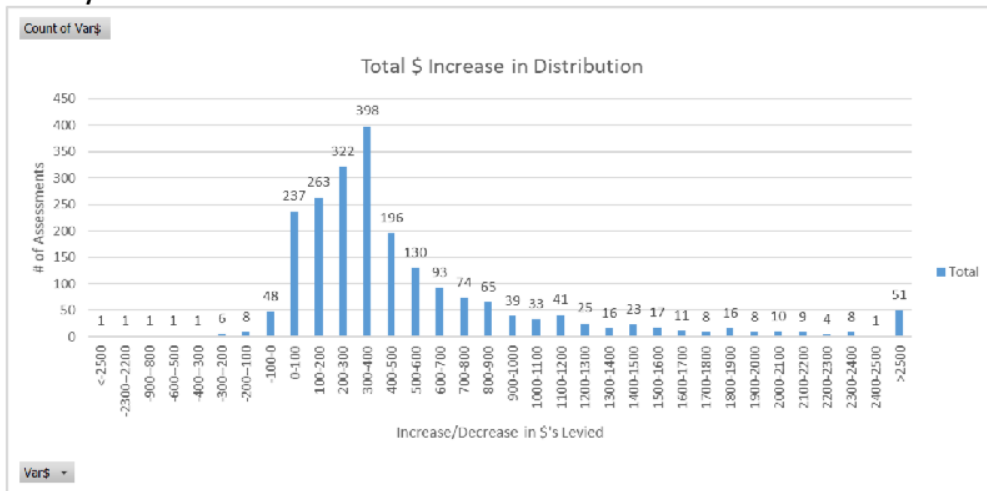
In the Commercial Category of differentials, the graph above shows that 67 assessments have an impact of over \$2,500 rate increase which amounts to 4% of the total (Aprx 1532 total) rating assessments.

**Residential multi unit**



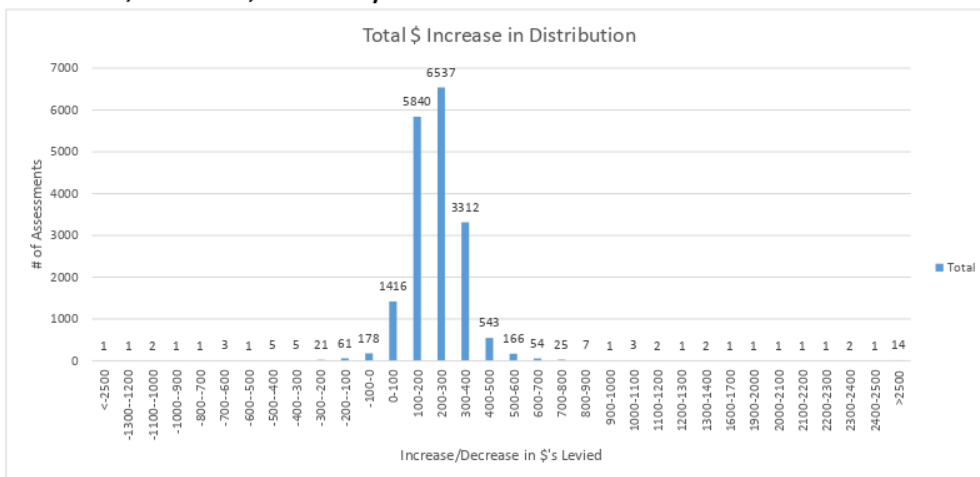


**Primary**



In the Primary category of differentials, the graph above shows that 51 assessments have an impact of over \$2,500 rate increase which amounts to 2% of the total (Aprx 2165 total) rating assessments.

**Residential, recreation, community**



# Geraldine Community Board Submission

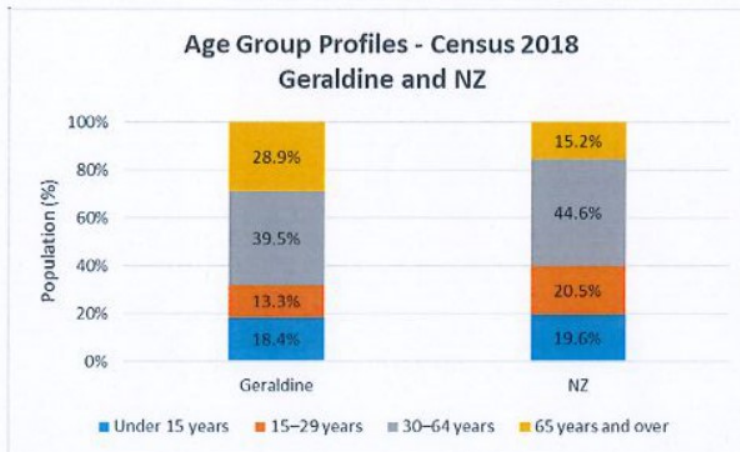
## Geraldine By The Numbers - Census 2018

This report outlines demographic and socioeconomic data from Statistics NZ Census 2018 for both Geraldine township, and Geraldine Ward census areas. Comparisons with census data for the rest of Timaru District and nationally provide a broader perspective. Comparisons with previous Census data from 2001-2018 identify trends in population growth over recent years. Implications from the Census data for the proposed Geraldine Health Centre conclude this report.

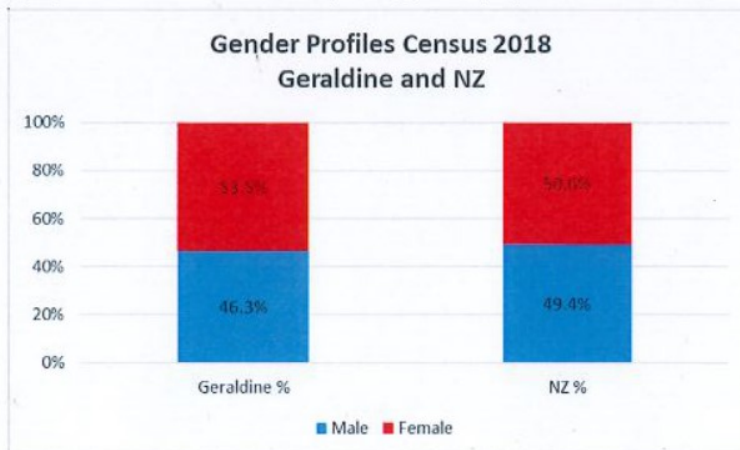
### Geraldine Township

Census 2018 data identifies Geraldine as a township with a Usually Resident Population of 2,706 people. Compared to the rest of NZ, Geraldine township has a population profile with:

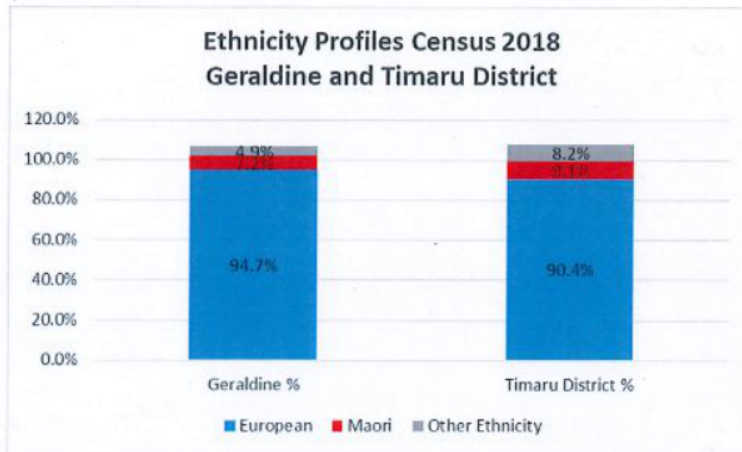
- A very high proportion of people aged 65+ years (nearly double the national average);
- A very low proportion of young adults aged 15-29 years (2/3 the national average);
- A low proportion of middle-aged adults aged 30-64 years; and
- A similar proportion of infants, children and youth aged under 15 years.



Probably due to Geraldine's elderly population and the longer life expectancy for females, Geraldine has a slightly higher proportion of females and correspondingly lower proportion of males than the rest of NZ:

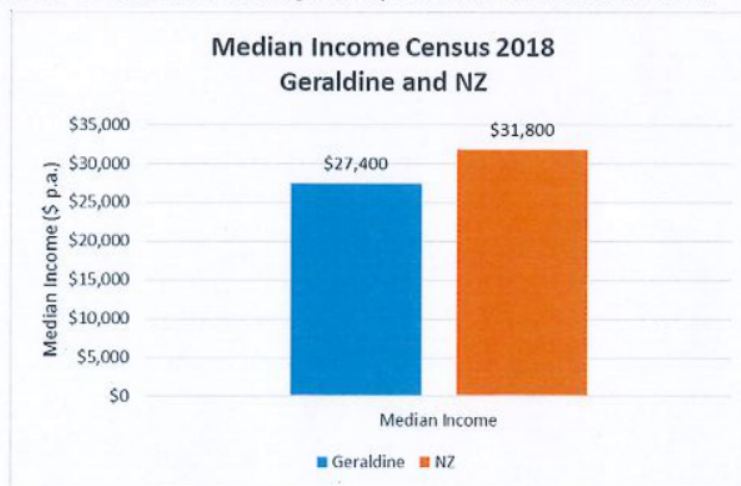


Geraldine has a higher proportion of European people, and correspondingly lower proportions of both Maori and Other Ethnicity than the rest of Timaru District:

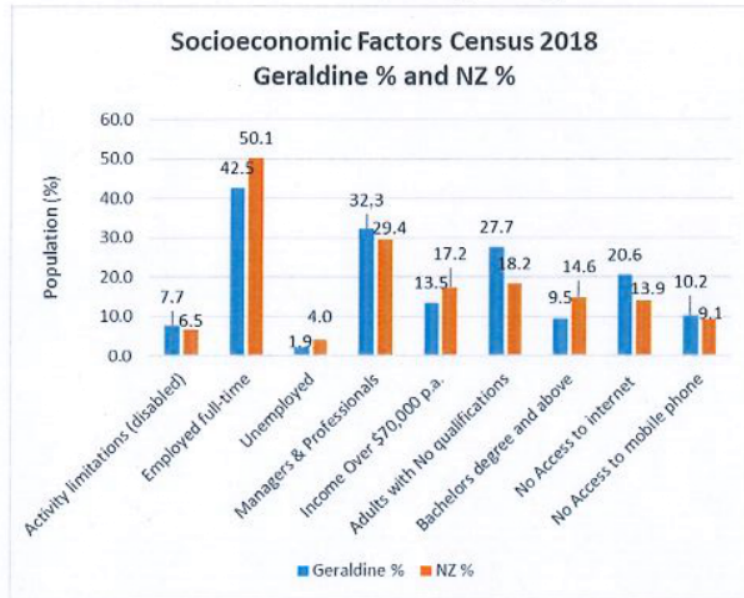


Note: data for the above ethnicities do not add to 100% because some people identify with multiple ethnic groups.

Median Income for Geraldine residents is significantly lower than the NZ median income:



Several other socioeconomic factors that impact personal quality of life, health and wellbeing are also identified in Census 2018 data for Geraldine township and NZ, including:



Low median income in itself is a socioeconomic risk factor for personal health and wellbeing in Geraldine community. Other socioeconomic risk factors for Geraldine community, compared with the rest of NZ, include:

- More people affected by disability;
- Fewer people in full-time employment;
- More people aged 16+ years with no formal qualifications;
- Fewer people with tertiary degrees; and
- Fewer people with access to modern communication such as the internet and mobile phones.

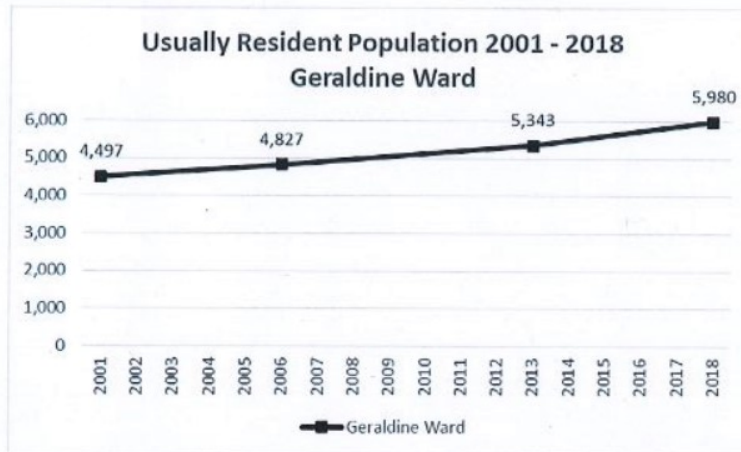
Conversely, socioeconomic advantage factors for Geraldine community arise from both low rates of unemployment and high rates of people working in managerial and professional positions.



**Geraldine Ward – Population Growth**

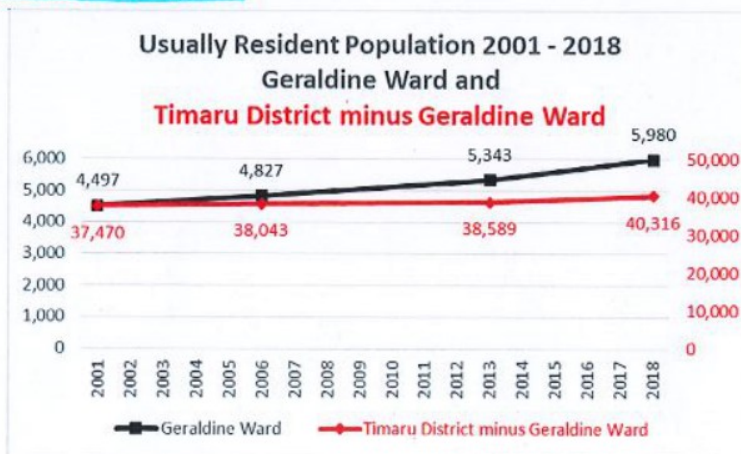
The Geraldine Ward census area comprises both Geraldine township and the surrounding rural hinterland. Census 2018 data shows that Geraldine Ward has a Usually Resident Population of 5,980 people, which is more than double Geraldine township’s population of 2,706 residents.

Geraldine Ward’s population has increased by 33.0% over the past two decades, increasing from 4,497 residents in 2001 to 5,980 residents in 2018:



By comparison, Geraldine Ward’s population growth rate of 33.0% since 2001 is well above NZ’s national population growth of 25.8% over the same period.

Within Timaru District, Geraldine Ward’s growth rate is even more remarkable. Geraldine’s population growth rate of 33% since 2001 is more than quadruple the population growth rate for the rest of Timaru District of 7.6% over the same period:





*My  
Submission  
- Long  
Term Plan  
2021 - 2031*













- 1. CLIMATE CHANGE**
- 2. AIGANTIGHE ART GALLERY REDEVELOPMENT**
- 3. DEVLOPING AORANGI PARK AND STADIUM**







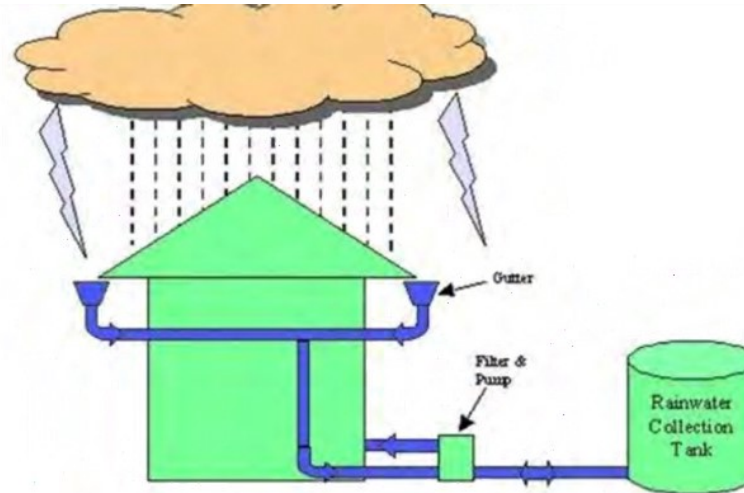




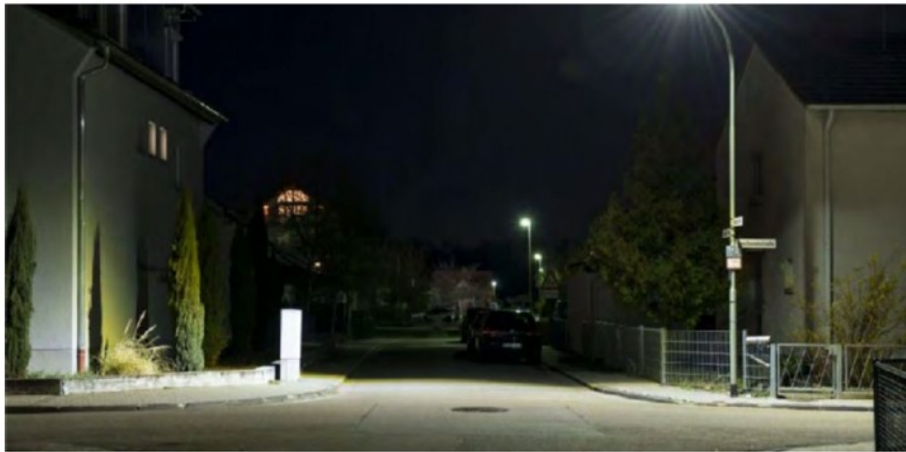




























*What are the perks?*

• **Better for the environment:**

Well, of course, they are much better for the environment than their petrol or diesel counterparts. Petrol and diesel exhaust is harmful to both the environment and human health. EVs have no tailpipe emissions.

• **Cheaper to run:**

EVs are about 3 times more efficient at getting energy to the driving wheels than Petrol/Diesel cars. Electricity is also much cheaper than petrol/Diesel. This makes EVs around 75% cheaper to run. Switching to an EV could save you over \$2000/yr. Just think



*What are the MYTHS about EVs?*

what you could do with an extra \$2000 to spend every year.

- **Ideal for town driving:** EVs run best in towns. The stopping and starting doesn't worry EVs. When you slow down at the traffic lights, the kinetic energy turns the motor (or motors) to generate electricity that goes back into the battery. They are also most efficient when driving at around 50km/h.
- **Cheaper to maintain:** They are also a lot easier and cheaper to maintain as they have less moving parts.

- Batteries have to be replaced every few years: **WRONG!** **X** EVs have sophisticated battery management systems that allow batteries to last for decades. In fact, Tesla has designed a new 4680 battery that can power their EVs for a 1 million miles.
- Batteries are worse for the environment than fossil fuels: **WRONG!** **X** All the components of an EV battery can be recycled many times over. Some of the more expensive and difficult to source metals (such as cobalt) are being replaced with more abundant materials such as iron. Several EV manufacturers are designing cobalt free batteries. Fossil fuels cannot be recycled.

Peter Bennett Submission

### TDC Submission – 30-5-21 @ 4.20pm

Intro – Good Afternoon and thank you for the opportunity to speak. After practising my speech of 10 minutes, I felt like a contestant on the chase. Peter your time starts now.

My name is Peter Bennett – Timaru Resident for over 60 years, Ratepayer and Timaru Penguins Co-ordinator in my 8<sup>th</sup> year.

My submission is broken into 3 parts -

**Part 1** - The Little Blue Penguins have now been residing at the Marine Parade rocks for many decades and around 10 years inside the roped area constructed around 10 years ago when it become non-tidal.

While Stage 1 was to rope off an area to give some protection from the public and dogs, it is in need of attention, let's call it Stage 2. As per photos sent.

Time frame – as soon as possible and hopefully before the next Dogs on Bay bylaw renewal in 2023.

The sooner we can fence and enhance the Penguin area, the more I can accept the council is serious about their value to the people of Timaru as a tourist attraction bringing long term financial benefits to our town and district.

To me they are actually a Gold Mine sitting on our back door requiring a small investment for great returns.

As I noted in my submission, the last 2 years before Covid, I calculated based on recorded nightly visitor counts over the 6 monthly breeding seasons, in excess of 10,000 tourists / visitors to watch the Penguins arrive and feed their chicks nightly.

A simple calculation of 10,000 people x \$100 for one night in Timaru = \$1,000,000.00 – 1 Million Dollars.

Imagine if we had 20,000 visitors or we could attract 10,000 visitors for 2 nights.

I have spoken to quite a few community groups over the last 3 years about Vision.

I love telling the history of Phillip Island from a promotional article I read in 2018.

A journey that started in the 1930s when the land owners on the Summerland Peninsula gave 10 acres to



the State of Victoria for the protection of the Little Blue Penguins.

By the 1950s, fences and viewing stands had been built as a main observation point at dusk for the arrival of the Penguins nightly.

A visitor centre was built in the late 1960s.

In 1985 the State government took the extraordinary step and decided to buy every piece of land / property on the Summerland Peninsula and return the land to the Penguins.

The buyout of homes and batches was completed in 2010. From 1985 and 35 years later, there decision has yielded great long term results.

In 2019, there are now around 30,000 breeding pairs of Little Penguins, the largest colony in the world, up from 10,000 in the 1980s.

Phillip Island is the most popular and Number 1 tourist destination in the State of Victoria.

Before Covid, the Penguin attraction had around 750,000 visitors in 2018. Yes, three quarters of a million.

Closer to home, the Oamaru Blue Penguin colony which started with a vision over 35 years ago, before Covid, was attracting around 75,000 visitors a year.

Without large visitor numbers at present, both sites recently started “livestreaming” the Penguins arriving at dusk nightly. We could do this in Timaru.

All I am asking is for a small financial input for the Penguins area upgrade to a more suitable and improved protection standard going forward for when the tourists return.

The hand drawn plan is my practical answers to the next stage, Stage 2, after observing and encountering many problems with the public and dog owners over the last few years.

Photos I sent for your perusal show the issues I am encountering with suggested solutions.

Fencing on the footpath side is to aesthetically incorporate netting or mesh between the existing posts with a rail along the top. This will give the Penguins safer protection from public and will stop them venturing onto the footpath and road in this area. As you can see by one of my photos submitted, the sooner the better.



Fencing on the beach side runs from the right hand side of the beach vehicle entry gate, along the rope enclosure side of the suggested boardwalk at a height of around 1.2 mtrs once again with a rail on the top. The fencing very similar to the childrens playground fencing at parks around Timaru.

Basically, the total enclosed area will give a defined tangible area of protection, a “no go” zone.

The overbridge to the beach is not necessary as part of Stage 2, but ultimately “may” be required at some stage to stop the lazy public and their dogs from entering the beach down through the roped area (shown in Photos) or down the rocks over the nesting burrows.

Stage 2, for me personally, would also go a long way towards defining to dog owners where they can exercise their dogs on the Bay in the winter. I am a dog owner, I do enjoy a walk along Caroline Bay but I can't help but observing a small minority of dog owners who don't care about the Penguins. Yes, I've been told where to go more than once.

**Part 2 – Caroline Bay Beach Beautification.**

I must point out, all my ideas are in the non-tidal areas of the beach. The boardwalk from one side of the bay to the other was a brilliant idea. A lot of visitors to Timaru watching the Penguins comment on it.

I want to see character and colour added to the beach.

I remember as a young lad, only a few years ago of course, when the sea came up to a rock wall at high tide and cars parked on the grass at the wall edge.

So we begin with a low level rock wall, around two rocks high along the beach / vegetation frontage with the existing exits off the boardwalks onto the beach transformed into resting / picnic spots.

The enhancement of the beach area as per hand drawn plan submitted, incorporating low level platforms as part of the beach exits for families to picnic on and trees.

Plant Pohutukawa trees as suggested on the plan to give a park like feeling on the edge of the sand as well as adding colour to the area. Give the beach frontage

that WOW look. Many comments I get say the existing vegetation area makes the beach area look very drab.

The boardwalks to low level platforms will also allow people in wheelchairs, mobility scooters and walkers to get closer to the beach. Maybe us one day 😊

We need a number of log seats along the rock / vegetation fence line for beach walkers, family picnics and my friends, the dog walkers in the winter.

A place to rest, enjoy the beach atmosphere and watch the world go by. Not everyone wants to sit on the sand or on logs washed up with the tide.

With our annual Rock N Hop a success every year, wouldn't it be great to improve the wow factor of the beachside.

We also need to move with the times and provide free Wi-Fi to all users at the Bay & Beach. I have a plan in mind with a donated wind / solar generator located centrally to the beach area which has the capability to power a wifi system. Shown on plan.

**Part 3 – Caroline Bay Coffee shop – Based on the Curio Bay idea / design. Perfect for Timaru**

My apologies to the councillors that I omitted the placement of the coffee shop off my original plan submitted. See overhead.

It's been talked about for some time now, but when is it going to happen. The grassed area beside the Port end beach carpark would be a great location.

Based on the Curio Bay design, public would be able to stop on their walk around the bay for a break. Sit indoors or outdoors on a deck enjoying the Rivera of the South as we used to be.

Within the shop, we should incorporate an amphitheatre where tourists and visitors can watch the history of Timaru. The early whaling history, Timaru and the first settlers, the shipwrecks, the local industries over the years, local & high country farming, even Mt Cook and Sir Edmund Hillary. We could even sell bottles of Pleasant Point water. The thoughts are endless.



Remember when people arrive in Timaru, not all go into the town shopping centre first. Not all are going to go to the Heritage centre. Not all are going to go to the Museum to learn about the history of Timaru.

The Caroline Bay coffee shop offers an alternative option as well as providing the history of our District. The town and district videos can be played at more than one venue.

And one major benefit of the amphitheatre within the coffee shop going forward is that we can provide a warm location for some tourists and visitors by “livestreaming” the Penguins arriving at the beach and walking up the sand to their nests after dark.

We can also livestream around NZ and the world. My Facebook page has over 3000 followers and many have joined up while in NZ and now keep in touch from many countries around the world.

## In Summary

The Penguins have chosen Caroline Bay as a breeding area. They need our help to survive. The Marine Parade Penguin site is unique in NZ as the public on the footpath can watch the Penguins on the rocks or on the sand 2 mtrs away. Many of our visitors are really impressed with the free experience in Timaru.

I can confirm, the breeding season just ended has not shown any increase for two years now. Around 15 known nests have produced approx. 30 more chicks this 20/21 season who will return to this breeding colony in 2 or 3 years time. The Little Blue Penguin goes through a juvenile stage of 2 to 3 years before it becomes an adult and ready to breed.

I can also report over the last month that the new breeding season may have started early noting 4 pairs residing at their nest locations. This has also happened at Otago Peninsula and Oamaru where eggs have been discovered noting the breeding season start is around a month earlier.

Also of interest is the nesting boxes kindly donated are now in service with 4 of the 9 showing signs of activity at the entrances.

It is envisaged with the creation of the larger enclosed area to become a safer and permanent construction, that another lot of boxes will be installed for future generations of juveniles arriving home as adults.

Please consider my request for a small investment seriously, considering the long term financial returns to our town, our shops, accommodation and businesses benefiting our district us for many decades to come.

The Bay Beautification, you would have to agree, we have promoted Caroline Bay for decades to bring tourists / visitors and holiday makers to Timaru. I believe we have neglected the Beach area for some years and it's time to re-invest in the future of one of the Top 10 beaches in NZ.

Once again, thank you for the time and hopefully I have enlightened your vision of Timaru as a tourist destination going forward. Feel free to ask questions, happy to catch up anytime you wish to have a chat or even a walk along the beach pointing out my thoughts.

Any questions ????????



# Beautification of Caroline Bay.

31-5-2021  
JBB

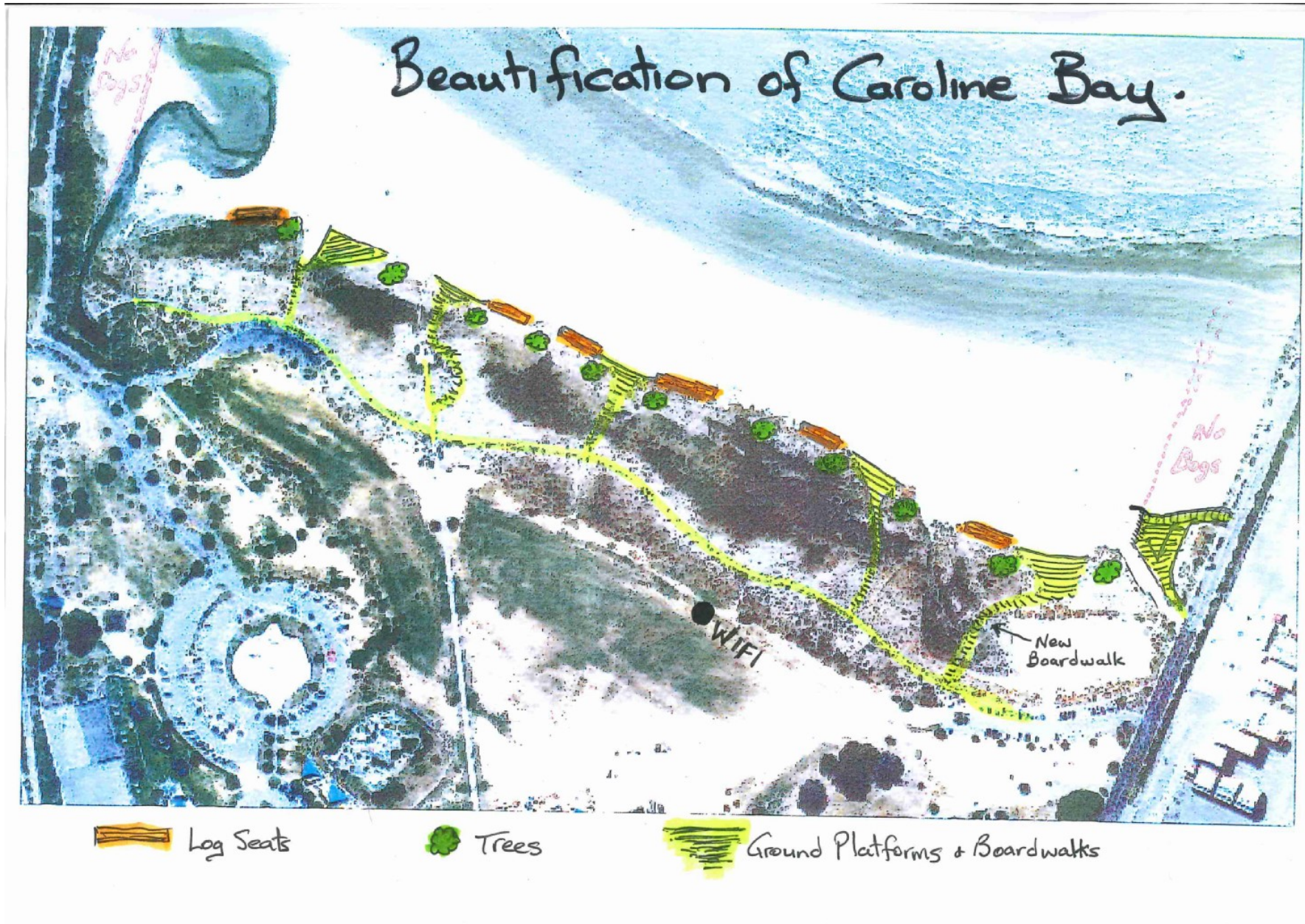


- Log Seats
- Trees
- Ground Platforms & Boardwalks











## Top 10 Beaches in NZ You Need to Visit This Summer

**ATTRACTIONS** *October 25, 2019*

Download as PDF

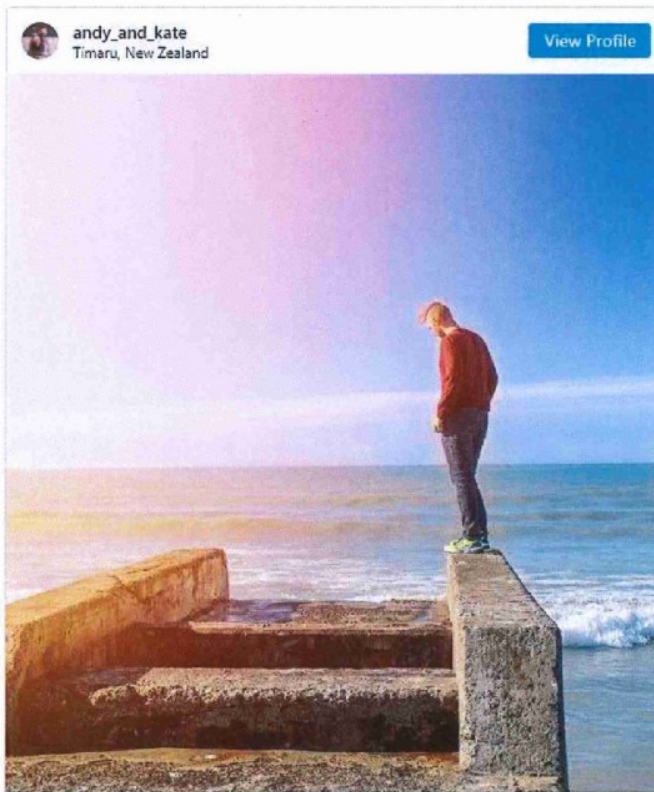
With summer nearly upon us, we thought it was time to delve into the big question on everyone's lips. Just where is New Zealand's best beach? With so many to choose from, it's difficult to nail down just one best beach in New Zealand. After all, it depends on what you're looking for in a beach.

For some, the best thing about going to the beach is the surf. For others, it's safe, calm swimming waters. For us, we love the soft white sand between our toes whereas others prefer a nice firm beach for some good old beach cricket.

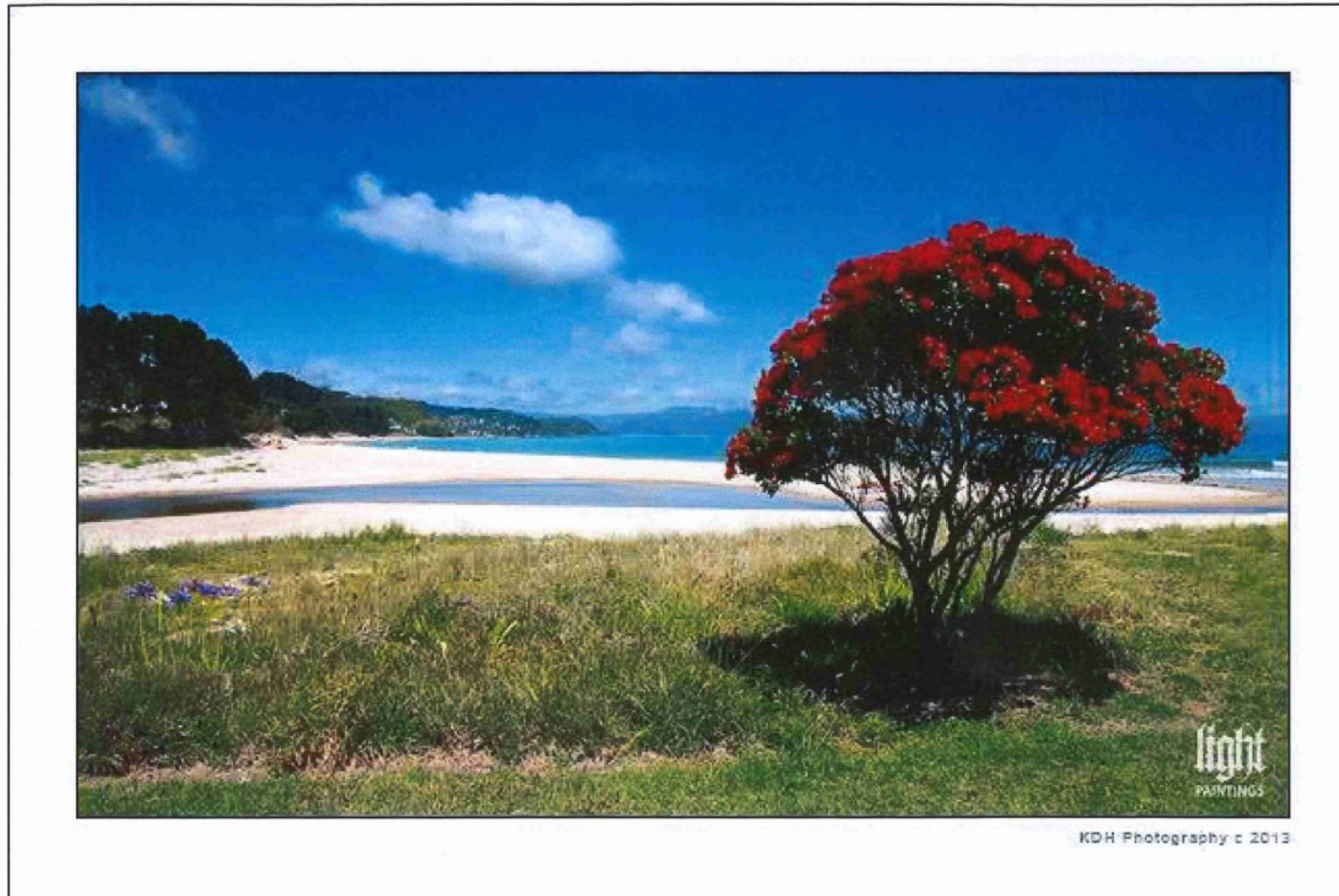
We decided to try and cover all the bases with our latest top 10 beaches in New Zealand and hope you enjoy our final selection to get ready for this Summer.

### 8. CAROLINE BAY, TIMARU

One of the most popular beaches in the South Island of New Zealand is Caroline Bay, in the South Island city of Timaru. The beach itself is sheltered by the harbour from the breakwater, offering itself as a calm place to go for a swim and take the family. The Bay sits in one of the best parks in the Timaru District and is a great place to head for a day out. Be sure to pack a picnic!



So what is so great about a tree by the beach? In New Zealand, the Pohutukawa Tree is also called the New Zealand Christmas Tree, because it blooms with magnificent red flowers, from early December through to just after Christmas. These trees signal the beginning of summer and so many people have great memories of hanging out under these beautiful trees, while on vacation over the Christmas break.





# Caroline Bay Is Most Popular Beach In South Island

Recently the AA Traveller Facebook page conducted a poll on the most popular beaches in NZ. Caroline Bay was rated 4th overall and easily the most popular in the South Island.

Finishing in the top 10 entitled Caroline Bay to signs promoting its popularity.



## Overview

Caroline Bay is the most widely known of all the parks in the Timaru District. When speaking to some from outside Canterbury about Timaru they will usually mention Caroline Bay, whereas locals will often refer to it as 'The Bay'.

The beach is sheltered by the harbour breakwater and is the only sandy beach between Oamaru and Banks Peninsula. March 2014 saw Caroline Bay beach being voted the most popular beach in the South Island.

Allied with the popular swimming beach is the annual summer carnival run by the voluntary Caroline Bay Association. The carnival has been operating for over a hundred years and draws people from around much of New Zealand to attend or assist with its operation. The carnival is a traditional family affair with free concerts, rides and sideshow style games.

Caroline Bay itself is located between the Pacific Ocean and the Timaru Central Business District, being separated from the main shopping area by the South Island Main Trunk Railway lines. The Piazza straddles the railway line and provides access for pedestrians via a grand staircase or via a lift which is unique for a public park in this country. Caroline Bay covers an area of 34 hectares excluding the beach.

## History

### Coastal Area

The dunes of Caroline Bay were awarded the Best Dune Re-vegetation Project trophy in 2010 after they were revegetated with native sand binding plants. Today the established plantings are likely to be the most diverse in the country and studied by university students.

Little penguins have now established a colony in and around Caroline Bay.

Check out our Diary of Major Events that have occurred on the Bay over the years from 1876 under Related Documents.

## Use

Caroline Bay is the most popular outdoor events centre in South Canterbury as well as being a very popular recreation area.

There is a destination sized children's playground, two free barbecues, outdoor gym equipment, large open spaces and plenty of infrastructure to support its various uses. There are also beach volleyball courts, mini golf, tennis courts, skate park and a small train offering rides. The various walks are enjoyed on a daily basis by many people and are also used for events such as triathlons.

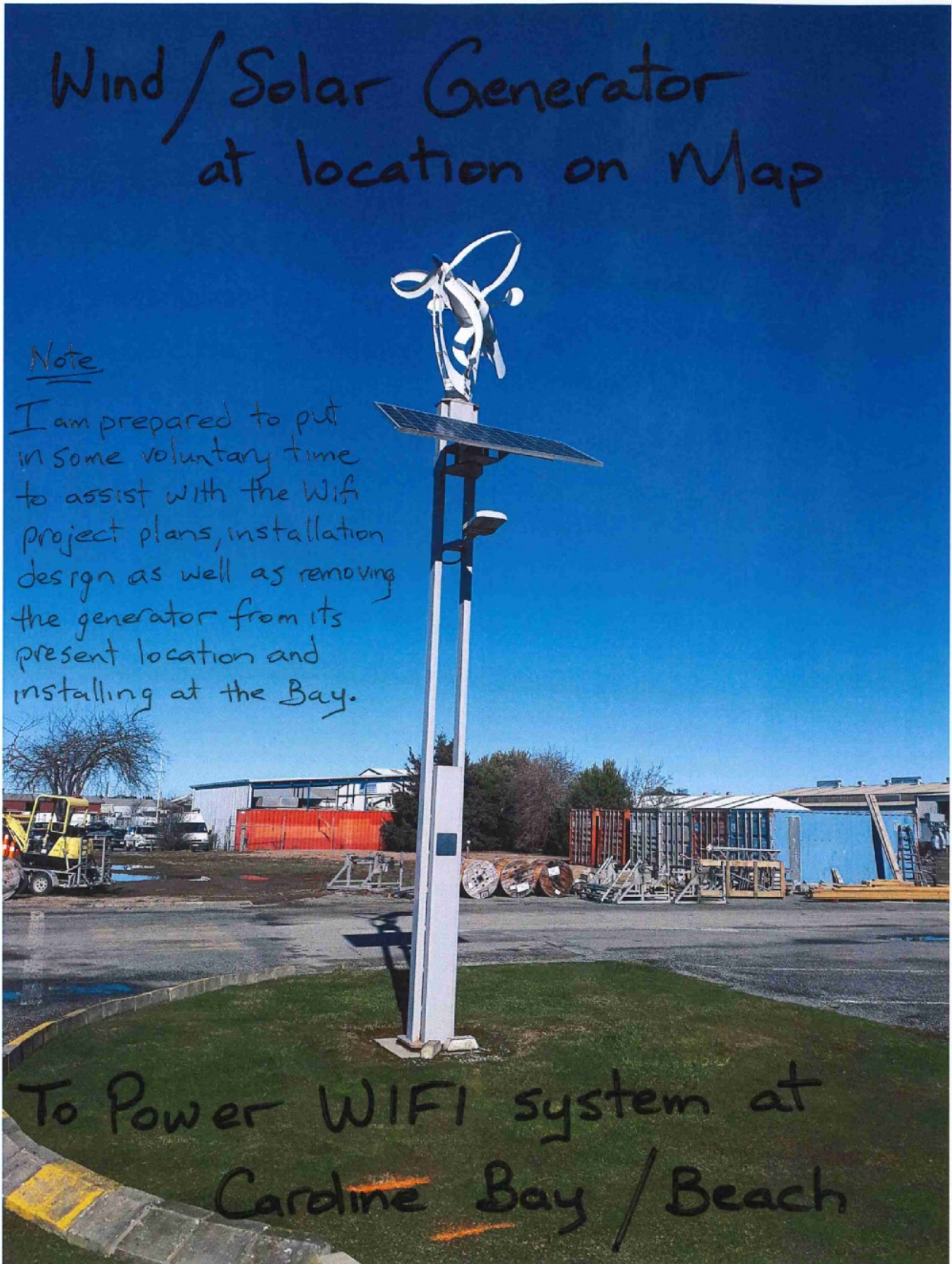
We are also lucky enough to have the Trevor Griffiths Rose Gardens with the roses flowering from November until July. Timaru has a fine collection of Old Roses. These are a style of rose that is bred to have a shorter flatter flower, rather than the taller tapering flower of Modern Roses. This is largely as a result of the legacy of the late Trevor Griffiths, a local rosarian, who specialised in growing and writing about old roses.

Public artworks such as sculptures and a mural, along with items of historical significance make a visit to Caroline Bay a culture and educational experience. Ample carparking and indoor venues complement the outdoor venues to cater for many events.

Caroline Bay also contributes to the landscape by giving world class views over its green area and across the sea to the distant mountains which are often snow covered in winter.

Last updated: 24 Feb 2021













**From 2010 to 2020.**

Growth of 52%

1,790 players ↑ 2,720 players

100+ athletes in our representative program; and

440+ attended grassroots clinics in Timaru, Temuka and Waimate.

Grassroots growth our most significant.

- Year 3&4 – up 104%
- Year 5&6 – up 100%
- Year 7&8 – up 51%

**Utilising existing facilities.**

- In order to accommodate our current participation levels, we are creative with how and where our programs are delivered, utilising numerous gyms in Timaru, as well as Temuka and Waimate for our grassroots skills delivery.
- E.g. Secondary Competition currently entertains 67 teams on a Friday night, utilising 5 courts – STEC + Roncalli College + Craighead Diocesan.
- Note: STEC and Craighead the only regulation sized courts in terms of run-off requirements.

**Key Example – Year 7&8 Competition**

- 37 teams in 2010 > 56 teams in 2020 > 59 teams in 2021.
- We currently run nine rounds with reduced game running times from 4pm to 9pm over three courts. This can mean very late nights for young basketballers.
- School gyms not available Mondays/Tuesdays.
- 2 x 11-13 minute halves VS expectation of 2 x 20 minute halves.
- Ideal scenario: six rounds from 4pm to 8.30pm, 6 courts would allow 36 games per night/72 teams.
- Following current growth trends, we would exceed the 6 court capacity by 2026.
- 3&4 and 5&6 comps are growing at an even faster rate, would see exceeding a 6 court capacity before construction was completed, even with compromised playing times.

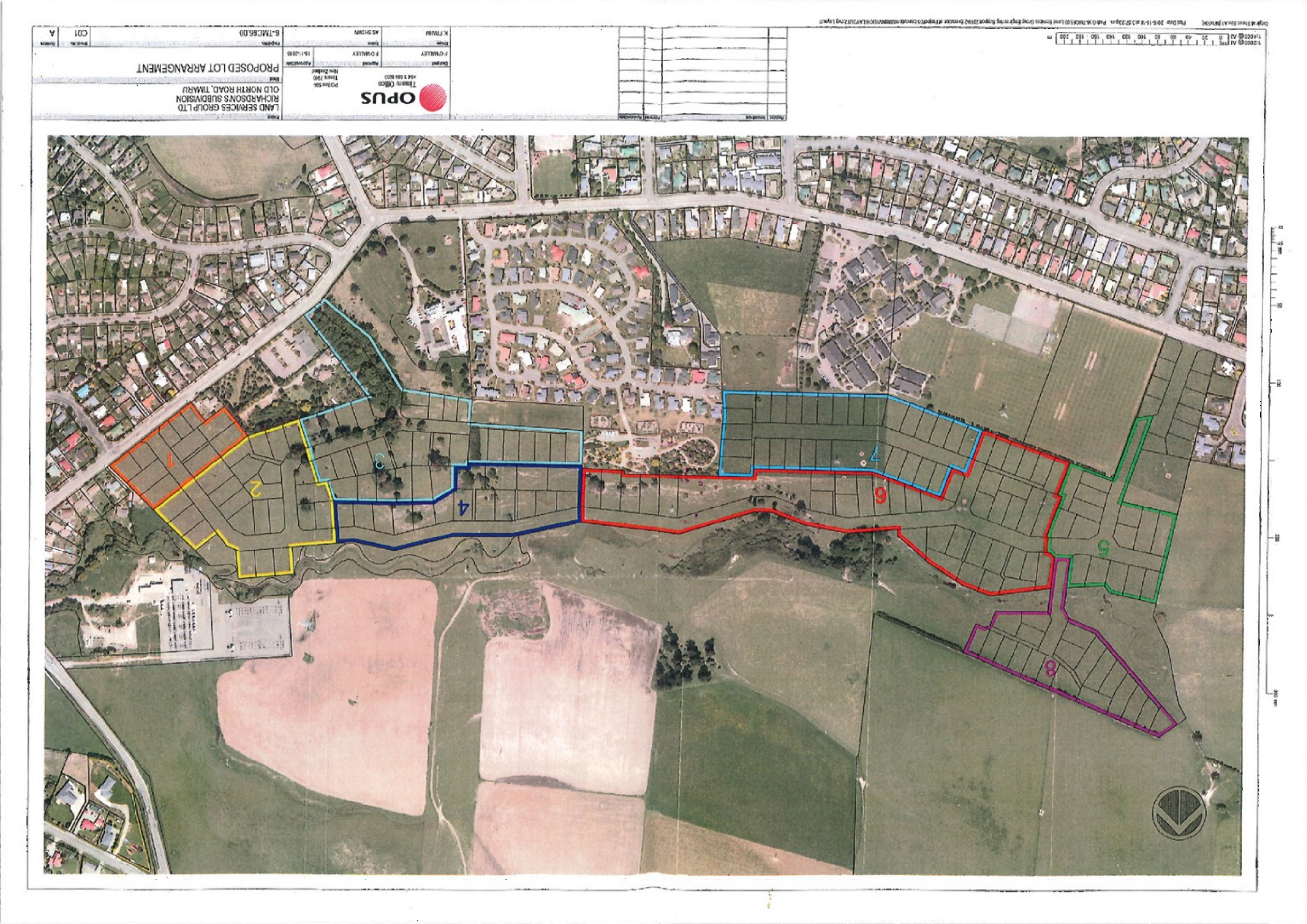
**Tournament hosting opportunities**

- SC is an attractive destination being geographically central and accessible.
- Research from Basketball New Zealand suggests that hosting an U13 Regional Championship would bring 22 teams to the region, with an estimated value of \$550,000 new money to the region.
- Hosting an even larger tournament such as Secondary Schools Nationals (as six additional courts would allow us to contend) would bring 64 teams to the region, and an estimated \$1,728,000 of new money for the weekend.

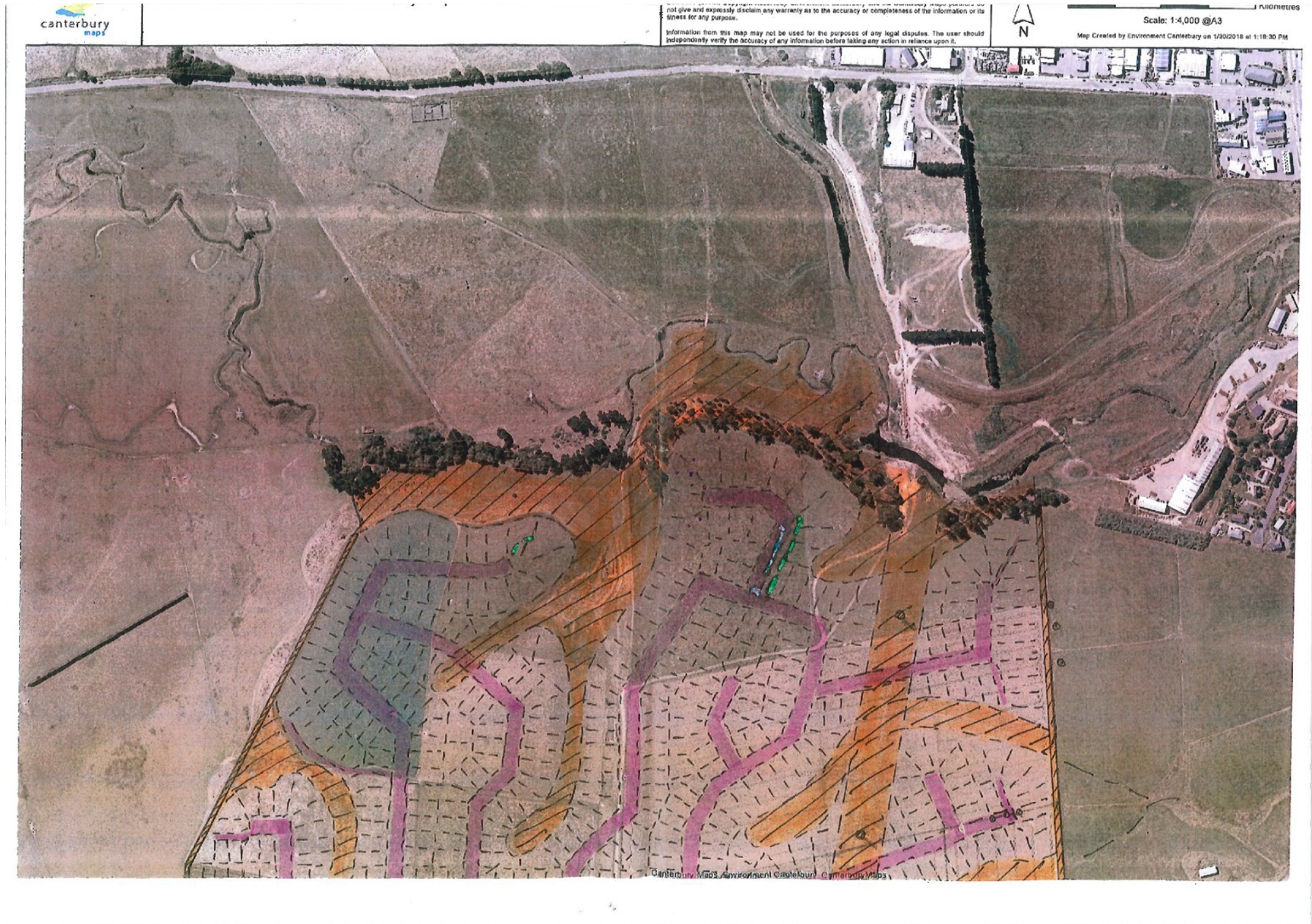








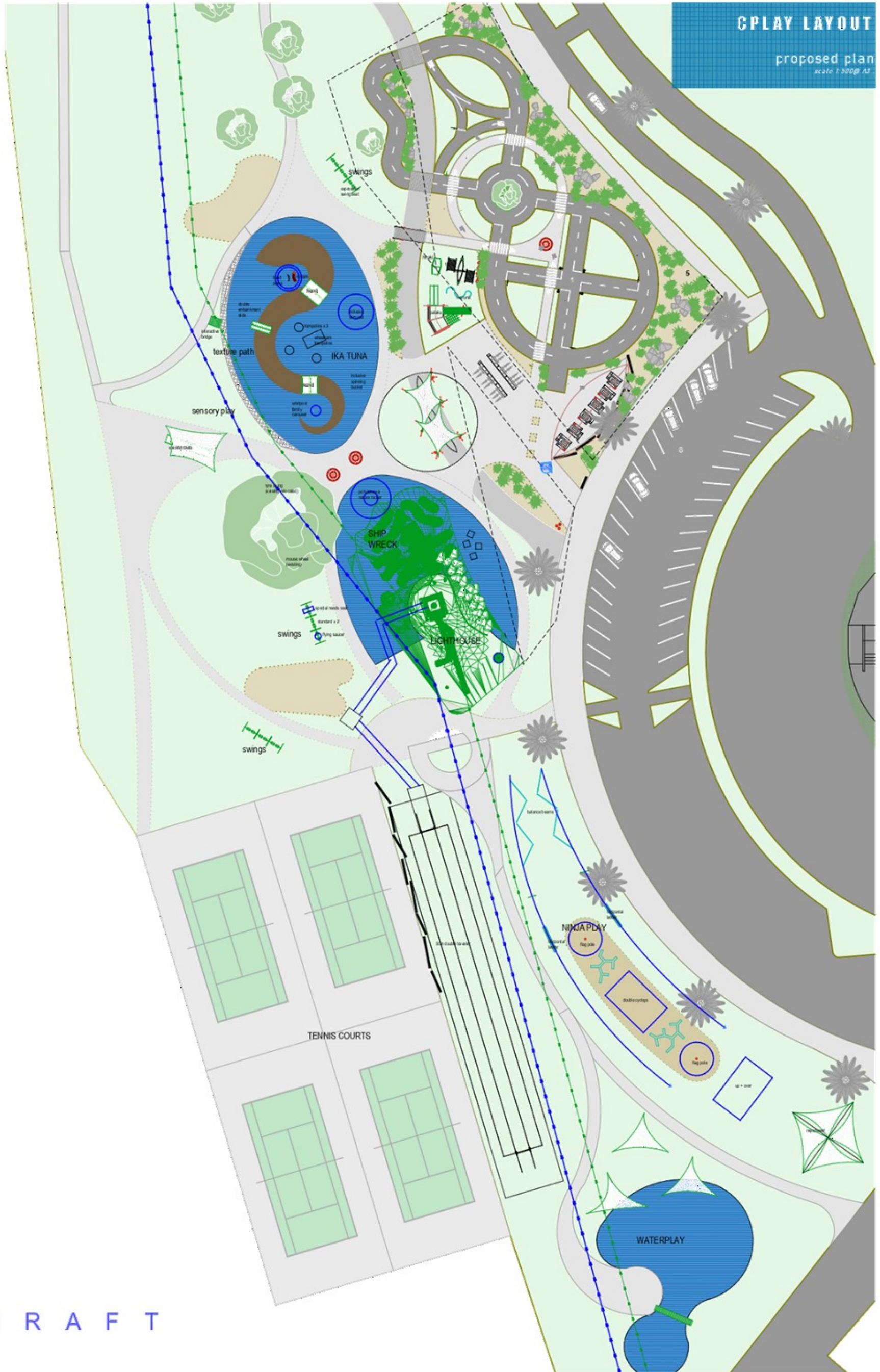












D R A F T



	Year 1	Ten Year Total	
<b>1 Aorangi Trust</b>			
<i>That Council considers fast tracking the development of Aorangi Stadium with planning and design beginning in year one of the LTP with increased project management costs of \$800,000.</i>			
Impact on Rates		0.00%	0.13%
Change in Rates	\$	-	993,019.00
<b>2 CPlay</b>			
<i>That Council considers increasing its contribution from \$510,000 to \$1,000,000 and this is brought forward one year to Year one of the LTP.</i>			
Impact on Rates		0.00%	0.02%
Change in Rates	\$	-	129,313.00
<b>3 Temuka Aviary</b>			
<i>That Council considers altering the timing for replacing the Temuka Aviary from year three to year one of the LTP, at an estimated cost of \$350,000.</i>			
Impact on Rates		0.00%	0.00%
Change in Rates	\$	-	14,983.00
<b>4 DistrictPlay</b>			
<i>That Council considers including \$45,000 in the budget for 2024/25 – Year Four of the LTP to prepare a play strategy</i>			
Impact on Rates		0.00%	0.01%
Change in Rates	\$	-	50,058.00
<b>5 Botanic Gardens</b>			
<i>That Council considers including \$60,000 in the budget for the 2023-24 – Year Three of the LTP for developing a landscape plan for Timaru Botanic Gardens.</i>			
Impact on Rates		0.00%	0.01%
Change in Rates	\$	-	65,118.00
<b>6 Theatre Royal</b>			
<i>That Council considers including an additional \$600,000 in the Theatre Royal &amp; Heritage Facility budget</i>			
Impact on Rates		0.00%	0.03%
Change in Rates	\$	-	196,654.00

**7 Venture Timaru**

*That Council considers allocating a further \$180,000 per year to Venture Timaru*  
 Impact on Rates 0.29% 0.27%  
 Change in Rates -\$ 180,000.00 -\$ 2,028,240.00

**8 Golf Facilities**

*That Council considers including \$15,000 from rates in the budget for 2021/22 – Year One of the LTP to develop a strategy for golf facilities.*  
 Impact on Rates 0.02% 0.00%  
 Change in Rates - 15,435 - 15,435

**9 Cycle Track**

*That Council consider \$20,000 in the budget for year one to investigate a replacement track cycling facility*  
 Impact on Rates 0.03% 0.00%  
 Change in Rates - 20,580 - 20,580

**10 Geraldine Nature & Sculpture Trail**

*That Council include \$50,000 in the budget for year one and \$15,000 commencing from year two to assist with designing and maintaining the Geraldine Nature & Sculpture Trail*  
 Impact on Rates 0.00% 0.02%  
 Change in Rates - - 176,660

**11 Contestable Fund**

*That Council considers a contestable annual fund of \$100,000 available to community groups for development of tracks and trails*  
 Impact on Rates 0.16% 0.15%  
 Change in Rates - 100,000 - 1,126,800

**12 Community Boards**

*That Council contribute \$100,000 to enable District Townships Strategic Planning*  
 Impact on Rates 0.16% 0.01%  
 Change in Rates - 100,000 - 100,000

**13 Salt Water Creek**

*That Council contributes \$25K in year 1 to fund weir improvements*  
 Impact on Rates 0.04% 0.00%  
 Change in Rates - 25,000 - 25,000

**14 3 Towns CityHub**

*That Council considers an increase of \$600,000 in year 3 to fund Townships CBD upgrade consisting of \$200K per community board*  
 Impact on Rates 0.00% 0.02%  
 Change in Rates - - 164,461

**15 Disaster Relief Fund**

*That Council considers increasing the disaster relief fund by \$200,000 per annum from year 2*  
 Impact on Rates 0.32% 0.30%  
 Change in Rates - 200,000 - 2,253,600

**16 Rating Review**

*That Council considers \$50,000 in year 1 and \$50,000 in year 2 of the LTP to undertake a Rating Review*  
 Impact on Rates 0.08% 0.01%  
 Change in Rates - 47,987 - 98,360

**All Scenarios**  
 Impact on Rates 1.10% 0.99%  
 Change in Rates -\$ 689,002 -\$ 7,458,286

**Rates Increase of 1.0% in Year 1**

	2021	2022	2023	2024	2025	2026	2027	2028	2029	2030	2031
Borrowing ratio to Rates	1.56	2.14	2.56	2.80	3.18	3.25	3.32	3.15	2.93	2.71	2.55
Borrowing ratio to Total Revenue	0.83	1.24	1.57	1.75	1.99	2.04	2.09	2.01	1.89	1.76	1.66