

TIMARU DISTRICT COUNCIL
HISTORIC HERITAGE ITEM RECORD FORM

HERITAGE ITEM NAME former Parr Bros' Walton Flour Mills Waterwheel

ADDRESS 140 Mill Road, Kerrytown

PHOTOGRAPH



(TDC)

FORMER DISTRICT PLAN ITEM No. No. 89 **HNZ LIST No. & CATEGORY** 1990 / 2
(at time of assessment)

LEGAL DESCRIPTION Heritage covenanted land on RS 9856 [with easement over Pts of RS 8853 and 9856]

VALUATION NUMBER 2483001000

DATE OF CONSTRUCTION 1867

**ARCHITECT/DESIGNER/
BUILDER** Parr brothers, owner/builders

STYLE Industrial vernacular

PHYSICAL DESCRIPTION

Overshot water wheel set in to the ground and surrounded by post and rail fencing. Water race no longer operational.

MATERIALS/STRUCTURE

Steel and timber.

ADDITIONS/ALTERATIONS

Restored, partially reconstructed (1988-89).

SETTING

The waterwheel is located on a rural property on the east side of Mill Road, north of its intersection with Arowhenua Road. Pleasant Point is located to the west and the south bank of the Opihi River is to the north. The Pleasant Point Stream provided the motive power for the flour mill. The extent of setting is limited to the immediate environs of the water wheel; shown as plot 'A' on DP 51190 [see below].

HISTORY

Brothers William (c.1835-1918) and James Parr emigrated from England in late 1858. They arrived in Lyttleton in January 1859 and were resident in South Canterbury by early 1862, if not earlier. In April 1867 they announced that the Walton Flour Mills, located near Pleasant Point, were now ready for work. A major flood of the Opihi River in February 1868 damaged the mill and destroyed the two houses on the Parrs' Mill Farm. The mill reopened in July of the same year. In 1872, after they had built a new mill in Timaru (demolished 1887), the Parrs leased the Walton mill and then, in 1874, sold both it and Mill Farm. The mill continued in operation, with minor interruptions and under several different owners, until 1905, at which time it was owned by James Cartwright. In 1894 the millstones had been replaced with rollers; the mill then having a capacity of a modest three tons a day. By contrast, the Royal Mills in Timaru were then producing 40 tons of flour every 24 hours. After the mill closed in 1905 the machinery was moved to a mill in Winchester and the building demolished. A later landowner protected the surviving water wheel and in 1988-89 it was restored by the NZ Historic Places Trust, the Pleasant Point Railway and Historical Society and the local Lions Club.

HISTORICAL AND SOCIAL SIGNIFICANCE

The former Parr Bros' Walton Flour Mills waterwheel has historical significance for its association with William and James Parr and the colonial development of Timaru district's well-known flour milling industry.

CULTURAL AND SPIRITUAL SIGNIFICANCE

The former Parr Bros' Walton Flour Mills waterwheel has cultural significance because its late 1980s restoration attests to the esteem in which it is held by members of the community.

ARCHITECTURAL AND AESTHETIC SIGNIFICANCE

The former Parr Bros' Walton Flour Mills waterwheel has aesthetic value as a surviving remnant of a 19th century industrial complex.

TECHNOLOGICAL AND CRAFTSMANSHIP SIGNIFICANCE

The former Parr Bros' Walton Flour Mills waterwheel has technological significance as a demonstration of 19th century flour milling engineering.

CONTEXTUAL SIGNIFICANCE

The former Parr Bros' Walton Flour Mills waterwheel has contextual value as local historic feature.

ARCHAEOLOGICAL AND SCIENTIFIC SIGNIFICANCE

As the waterwheel pre-dates 1900 its site has potential archaeological significance relating to the development of the Parr brothers' milling operations and Mill Farm.

SUMMARY OF HERITAGE SIGNIFICANCE

The former Parr Bros' Walton Flour Mills waterwheel has overall heritage significance to Kerrytown and to Timaru district as a whole. The structure has historical significance for its association with the Parr brothers and colonial flour milling in the district and cultural significance as a valued historic artefact. The former Parr Bros' Walton Flour Mills waterwheel has aesthetic value owing to its industrial appearance and technological significance as evidence of 19th century milling engineering. The former Parr Bros' Walton Flour Mills waterwheel has contextual value as a local historic feature and potential archaeological significance in view of the date of the structure's construction.

HERITAGE CATEGORY

B

REFERENCES

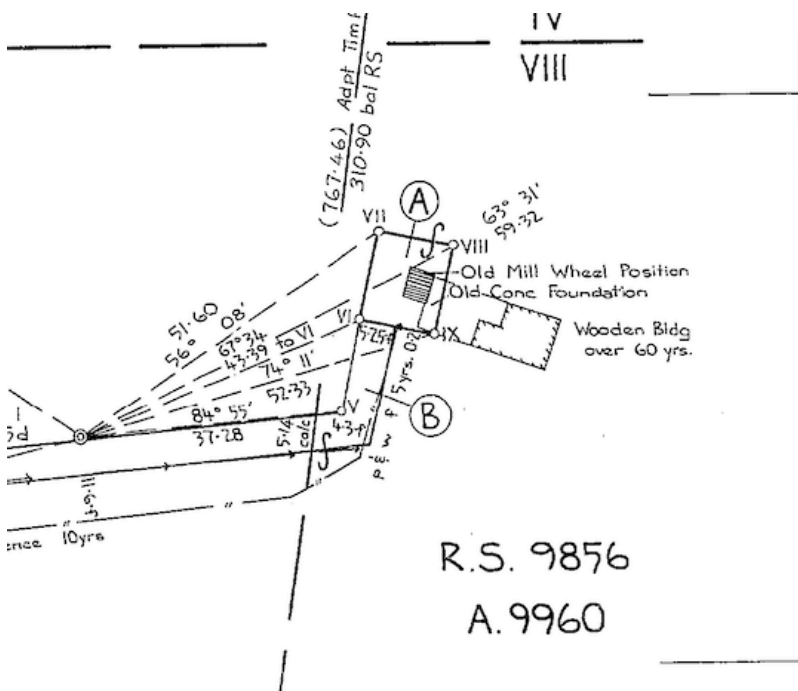
- *Timaru Herald* 6 August 1864, p. 5; 20 May 1865, p. 5; 8 December 1866, p. 1; 22 May 1867, p. 1; 7 September 1867, p. 3; 5 February 1868, p. 2; 12 February 1868, p. 2; 4 July 1868, p. 1; 22 September 1869, p. 1; 3 November 1869, p. 1; 1 January 1870, p. 3; 7 February 1872, p. 2; 21 February 1872, p. 3; 23 February 1872, p. 2; 8 June 1874, p. 2; 4 June 1880, p. 4; 30 March 1886, p. 3; 19 April 1886, p. 2; 11 June 1914, p. 12; 26 June 1918, p. 5.
- *Lyttelton Times* 23 April 1862, p. 3.
- *Star* 9 February 1885, p. 3.
- <http://www.heritage.org.nz/the-list/details/1990>



Extent of setting, subject to confirmation according to DP 51190, 140 Mill Road, Kerrytown.



Land parcel as a whole, with wheel location marked by star.



Detail of DP 51190, dated September 1986, showing mill wheel position at 'A'; this is the setting for the HNZPT list entry. LINZ.