

**TIMARU DISTRICT COUNCIL**  
**HISTORIC HERITAGE ITEM RECORD FORM**

---

**HERITAGE ITEM NAME** former Gibson's Washhouse & Dairy

**ADDRESS** 748-806 Fairview Road, Claremont

**PHOTOGRAPH**



(TDC)

**FORMER DISTRICT PLAN ITEM NO.** No. 94      **HNZ LIST NO. & CATEGORY** 2003 / 2  
(at time of assessment)

**LEGAL DESCRIPTION** Lot 1 DP 1373

**VALUATION NUMBER** 2485009600

**DATE OF CONSTRUCTION** 1880s?

**ARCHITECT/DESIGNER/  
BUILDER** John Gibson, owner/builder?

**STYLE** Rural vernacular

**PHYSICAL DESCRIPTION**

Single storey farm building with gabled roof and rectangular footprint. Coursed bluestone walls; square door and window openings.

**MATERIALS/STRUCTURE**

Bluestone (basalt), timber & corrugated iron.

**ADDITIONS/ALTERATIONS**

Internal alterations (date unknown).

**SETTING**

The washhouse and dairy building is set back from the road on the north side of Fairview Road, east of its intersection with Holme Station Road. Two other scheduled heritage items (granary, # 96 & stable, # 95) stand close by. The extent of setting is limited to the immediate setting of the three scheduled items, rather than the land parcel as a whole.

## **HISTORY**

'Pleasant Hill' on the Timaru Downs, the property of the New Zealand Meat Preserving Company, was subdivided in 1876 (DP 146). The estate was bounded by Claremont Road in the north and the curve of Fairview Road in the west and south. A north-south line from the intersection of Claremont and Brockley Roads in the north to Fairview Road in the south formed the eastern boundary of the large block. John Gibson (c.1834-1911) acquired part of the property in 1877, having sold 50 acres at Saltwater Creek for £2000 the year before. Gibson and his wife Sarah had arrived in Timaru aboard the *Strathallan* in 1859. The shipping list recorded that Gibson was an agricultural labourer from County Armagh, Ireland. In 1898 three parcels, including the land on which the scheduled outbuildings stand, were subdivided by Gibson (DP 1373). Sarah Gibson died at Claremont in 1899, leaving eight children and between 30 and 40 grandchildren to 'mourn her decease'. Also in 1899 Gibson leased Lot 1 of DP 1373 to Arthur Kee (c.1869-1946) for a period of five years. As Kee held a clearing sale at Levels Valley in September 1912 it is assumed he had multiple farming operations; his 'excellent draught horses' were noted at the time of the 1912 sale. Kee subsequently relocated to Clydevale in Otago. A new lease was entered into between Gibson and Henry Mechen for a period of seven years in 1911, after which the property passed through a number of hands until it was purchased by Florence McVey, the wife of John McVey, in 1947. The property is still in farm use today.

## **HISTORICAL AND SOCIAL SIGNIFICANCE**

The former Gibson's washhouse & dairy has historical significance for its association with John Gibson and the development of farming in the Timaru Downs area.

## **CULTURAL AND SPIRITUAL SIGNIFICANCE**

The former Gibson's washhouse & dairy has cultural value as a demonstration of the way of life of colonial farmers and the service buildings they needed to support a later 19<sup>th</sup> century farming operation.

## **ARCHITECTURAL AND AESTHETIC SIGNIFICANCE**

The former Gibson's washhouse & dairy has architectural value as a vernacular farm building designed to be fit for purpose.

## **TECHNOLOGICAL AND CRAFTSMANSHIP SIGNIFICANCE**

The former Gibson's washhouse & dairy has technological and craftsmanship significance for its stone construction. As the building is built from bluestone stone, rather than cob, it is assumed to have been built later than the other two scheduled items on the farm. The stone walls would have helped to keep the dairy produce stored in the building cool.

## **CONTEXTUAL SIGNIFICANCE**

The former Gibson's washhouse & dairy has contextual significance as a local historic feature within the rural landscape of Claremont and as part of a cluster of colonial farm buildings (scheduled items # 95 and 96).

## **ARCHAEOLOGICAL AND SCIENTIFIC SIGNIFICANCE**

As the building pre-dates 1900 its site has potential archaeological significance relating to the structure's construction and the development of pastoralism in Claremont.

## **SUMMARY OF HERITAGE SIGNIFICANCE**

The former Gibson's washhouse & dairy building has overall heritage significance to Claremont and Timaru district as a whole. The building has historical significance for its

association with John Gibson and colonial farming in the area and cultural value as a demonstration of the way of life of its former users. The former Gibson's washhouse & dairy has architectural value as a vernacular farm building and technological and craftsmanship significance for its stone construction using a locally sourced material. The former Gibson's washhouse & dairy has contextual significance as a local historic feature and in relation to two other contemporary farm buildings in the vicinity. The former Gibson's washhouse & dairy has potential archaeological significance in view of its pre-1900 date of construction.

## HERITAGE CATEGORY

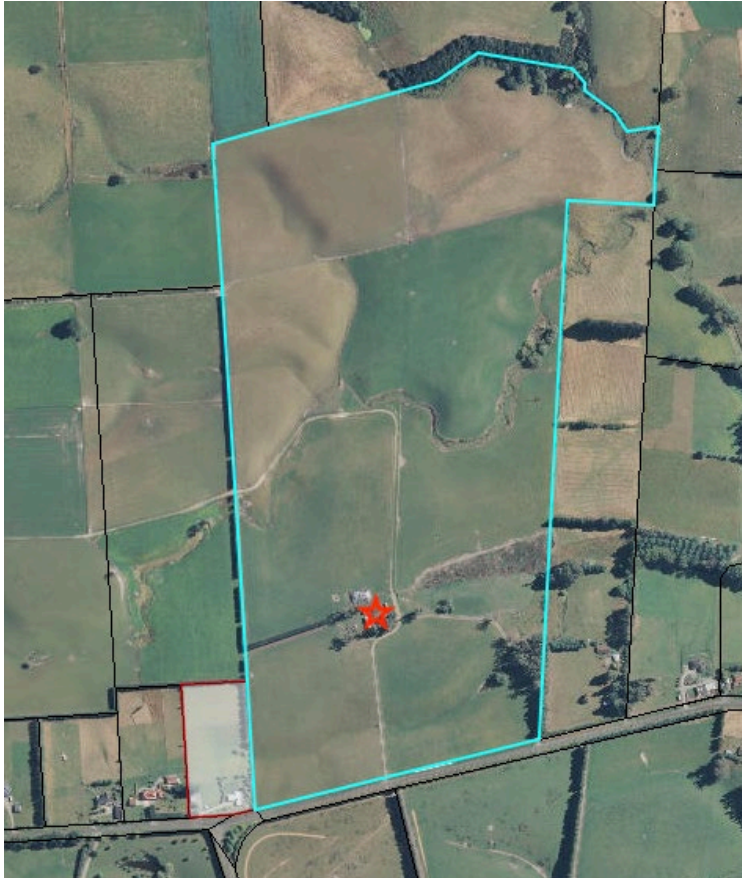
B

## REFERENCES

- *Timaru Herald* 20 April 1876, p. 3; 27 November 1876, p. 2; 8 September 1877, p. 3; 16 April 1878, p. 2; 20 February 1896, p. 2; 14 February 1899, p. 2; 28 April 1899, p. 3; 21 February 1911, p. 7; 12 September 1912, p. 5; 19 March 1913, p. 12; 24 May 1916, p. 12; 8 July 1916, p. 16; 14 July 1917, p. 12; 25 July 1917, p. 12; 29 September 1917, p. 12; 6 November 2012 (available online).
- *South Canterbury Times* 13 August 1885, p. 3; 1 December 1885, p. 3; 14 February 1899, p. 3; 6 May 1901, p. 4.
- *Otago Daily Times* 25 June 1918, p. 4.
- *Press* 8 April 1924, p. 4; 15 May 1939, p. 1; 22 December 1943, p. 1.
- *Lyttelton Times* 30 December 1869, p. 2; 5 June 1897, p. 8.
- *Temuka Leader* 29 July 1930, p. 2.
- *Cyclopedia of New Zealand – Canterbury Provincial District* Christchurch, 1903; available online.
- <http://www.heritage.org.nz/the-list/details/2003>



Extent of setting, washhouse/dairy marked by star, Fairview Road, Claremont.



Land parcel as a whole with farm building cluster marked by star.