

TIMARU DISTRICT SIGNIFICANT NATURAL AREAS

ROADSIDE SNA SURVEY 2022

SNA 990

Road: Taiko Road

Side of Road: west

Map Reference (NZTM): 1442231E-5090437N

Ecological District: Waimate

Nearest Locality: Cave

Adjacent Property: 24820-10101

Size: 120m²

Level IV Land Environment: N3.1a



Description:

A small patch of vegetation on a roadside bank containing ti/cabbage trees (*Cordyline australis*), wild plum trees, and bracken (*Pteridium esculentum*). Surrounding vegetation is rank grassland dominated by cocksfoot (*Dactylis glomerata*), yarrow (*Achillea millefolium*) with patches of Californian thistle (*Cirsium arvense*).

Notable Species:

No listed 'at risk' or 'threatened' species were observed. Indigenous vegetation is now rare in this part of the Waimate Ecological District.



Significance Assessment:

Assessment against Canterbury Regional Policy Statement Appendix 3 criteria:

Criteria	Rank	Assessment
Representativeness	M	1. A degraded example of indigenous vegetation, representing all that remains in this part of the ecological district.
Rarity/Distinctiveness	H	3. Indigenous vegetation/habitat that has been reduced to less than 20% of its former extent in the ecological district.
Diversity and Pattern	L	A very low diversity of indigenous ecosystems, habitat types, or taxa.
Ecological Context	L	Vegetation/habitat that does not provide or contribute to an important ecological linkage or buffering, and does not provide important habitat for indigenous species.

Assessment against Timaru District Plan Part B criteria:

Primary Criteria	Rank	Assessment
Representativeness	M	A depleted example of indigenous vegetation which is typical of that remaining in the ecological district.
Rarity	M	The area supports an indigenous species that is now rare in this part of the ecological district.
Diversity and Pattern	L/M	A substantially depleted indigenous plant community.
Distinctiveness/Special Features	L	The area does not support species at distributional limits, intact sequences, or provide important fauna habitat.

Other Criteria		
Size/Shape	L	The area is small and poorly buffered.
Connectivity	L	The area is isolated from other areas of indigenous vegetation/habitat and does not form an important part of a network of fauna habitat.
Sustainability	M	The area is modified, but the indigenous vegetation is resilient.

The area is significant when assessed against the Canterbury Regional Policy Statement criteria, principally because it supports indigenous vegetation that has been reduced to less than 20% of its former extent in the ecological district.

Condition and Management:

The indigenous vegetation appears healthy. Wild plum trees dominate the site. Any application of herbicide to control weed species should avoid the indigenous vegetation.

TIMARU DISTRICT SIGNIFICANT NATURAL AREAS

ROADSIDE SNA SURVEY 2022

SNA 991

Road: Taiko Road

Side of Road: west

Map Reference (NZTM): 1442307E-5090344N

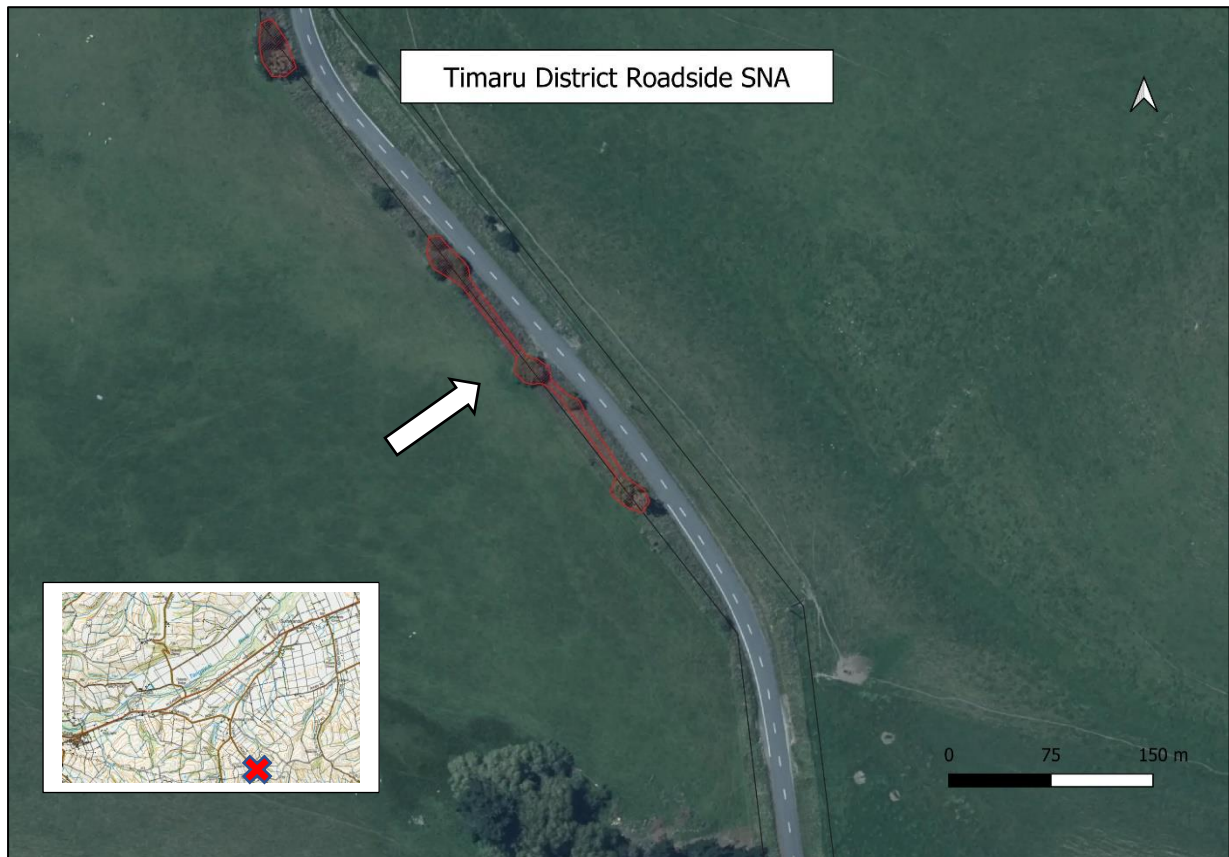
Ecological District: Waimate

Nearest Locality: Cave

Adjacent Property: 24820-10101

Size: 423m²

Level IV Land Environment: N3.1a



Description:

A small strip of vegetation on a roadside bank containing ti/cabbage trees (*Cordyline australis*), kohuhu (*Pittosporum tenuifolium*), pohuehue (*Muehlenbeckia australis*), and bracken (*Pteridium esculentum*). Surrounding vegetation is rank grassland dominated by cocksfoot (*Dactylis glomerata*), Chewings fescue (*Festuca rubra*), yarrow (*Achillea millefolium*) with patches of Californian thistle (*Cirsium arvense*) and occasional gorse (*Ulex europaeus*).

Notable Species:

No listed 'at risk' or 'threatened' species were observed. Indigenous vegetation is now rare in this part of the Waimate Ecological District.



Significance Assessment:

Assessment against Canterbury Regional Policy Statement Appendix 3 criteria:

Criteria	Rank	Assessment
Representativeness	M	1. A degraded example of indigenous vegetation, representing all that remains in this part of the ecological district.
Rarity/Distinctiveness	H	3. Indigenous vegetation/habitat that has been reduced to less than 20% of its former extent in the ecological district.
Diversity and Pattern	L	A very low diversity of indigenous ecosystems, habitat types, or taxa.
Ecological Context	L	Vegetation/habitat that does not provide or contribute to an important ecological linkage or buffering, and does not provide important habitat for indigenous species.

Assessment against Timaru District Plan Part B criteria:

Primary Criteria	Rank	Assessment
Representativeness	M	A depleted example of indigenous vegetation which is typical of that remaining in the ecological district.
Rarity	M	The area supports an indigenous species that is now rare in this part of the ecological district.
Diversity and Pattern	L/M	A substantially depleted indigenous plant community.

Distinctiveness/Special Features	L	The area does not support species at distributional limits, intact sequences, or provide important fauna habitat.
Other Criteria		
Size/Shape	L	The area is small and poorly buffered.
Connectivity	L	The area is isolated from other areas of indigenous vegetation/habitat and does not form an important part of a network of fauna habitat.
Sustainability	M	The area is modified, but the indigenous vegetation is resilient.

The area is significant when assessed against the Canterbury Regional Policy Statement criteria, principally because it supports indigenous vegetation that has been reduced to less than 20% of its former extent in the ecological district.

Condition and Management:

The indigenous vegetation appears healthy. Any application of herbicide to control weed species should avoid the indigenous vegetation.

TIMARU DISTRICT SIGNIFICANT NATURAL AREAS

ROADSIDE SNA SURVEY 2022

SNA 992

Road: Taiko Road

Side of Road: north

Map Reference (NZTM): 1441970E-5090684N

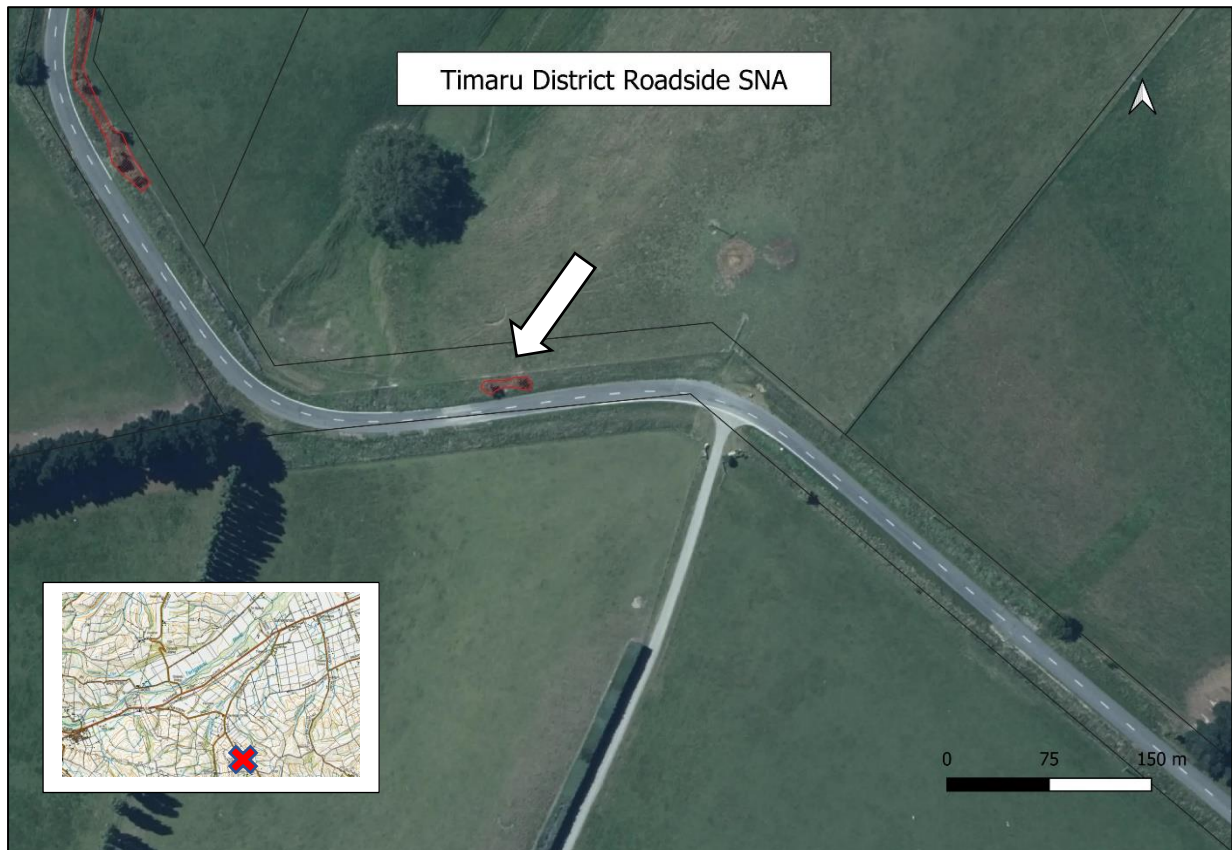
Ecological District: Waimate

Nearest Locality: Cave

Adjacent Property: 24820-10101

Size: 43m²

Level IV Land Environment: N3.1a



Description:

Two ti/cabbage trees (*Cordyline australis*) in rank (un-grazed) exotic grassland, adjacent to the property boundary.

Notable Species:

No listed 'at risk' or 'threatened' species were observed. Cabbage trees are now rare in this part of the Waimate Ecological District.



Significance Assessment:

Assessment against Canterbury Regional Policy Statement Appendix 3 criteria:

Criteria	Rank	Assessment
Representativeness	M	1. A degraded example of indigenous vegetation, representing all that remains in this part of the ecological district.
Rarity/Distinctiveness	H	3. Indigenous vegetation/habitat that has been reduced to less than 20% of its former extent in the ecological district.
Diversity and Pattern	L	A very low diversity of indigenous ecosystems, habitat types, or taxa.
Ecological Context	L	Vegetation/habitat that does not provide or contribute to an important ecological linkage or buffering, and does not provide important habitat for indigenous species.

Assessment against Timaru District Plan Part B criteria:

Primary Criteria	Rank	Assessment
Representativeness	M	A depleted example of indigenous vegetation which is typical of that remaining in the ecological district.
Rarity	M	The area supports an indigenous species that is now rare in this part of the ecological district.
Diversity and Pattern	L/M	A substantially depleted indigenous plant community.

Distinctiveness/Special Features	L	The area does not support species at distributional limits, intact sequences, or provide important fauna habitat.
Other Criteria		
Size/Shape	L	The area is small and poorly buffered.
Connectivity	L	The area is isolated from other areas of indigenous vegetation/habitat and does not form an important part of a network of fauna habitat.
Sustainability	M	The area is modified, but the indigenous vegetation (cabbage trees) is resilient.

The area is significant when assessed against the Canterbury Regional Policy Statement criteria, principally because it supports indigenous vegetation that has been reduced to less than 20% of its former extent in the ecological district.

Condition and Management:

The cabbage trees appear healthy. The trees should be protected from stock damage. Any application of herbicide to control weed species should avoid the cabbage trees.

TIMARU DISTRICT SIGNIFICANT NATURAL AREAS

ROADSIDE SNA SURVEY 2022

SNA 993

Road: Taiko Road

Side of Road: north

Map Reference (NZTM): 1441847E-5090792N

Ecological District: Waimate

Nearest Locality: Cave

Adjacent Property: 24820-10101

Size: 452m²

Level IV Land Environment: N3.1a



Description:

Several ti/cabbage trees (*Cordyline australis*) in rank (un-grazed) exotic grassland, adjacent to the property boundary. Patches of bracken (*Pteridium esculentum*) are present.

Notable Species:

No listed 'at risk' or 'threatened' species were observed. Cabbage trees are now rare in this part of the Waimate Ecological District.



Significance Assessment:

Assessment against Canterbury Regional Policy Statement Appendix 3 criteria:

Criteria	Rank	Assessment
Representativeness	M	1. A degraded example of indigenous vegetation, representing all that remains in this part of the ecological district.
Rarity/Distinctiveness	H	3. Indigenous vegetation/habitat that has been reduced to less than 20% of its former extent in the ecological district.
Diversity and Pattern	L	A very low diversity of indigenous ecosystems, habitat types, or taxa.
Ecological Context	L	Vegetation/habitat that does not provide or contribute to an important ecological linkage or buffering, and does not provide important habitat for indigenous species.

Assessment against Timaru District Plan Part B criteria:

Primary Criteria	Rank	Assessment
Representativeness	M	A depleted example of indigenous vegetation which is typical of that remaining in the ecological district.
Rarity	M	The area supports an indigenous species that is now rare in this part of the ecological district.
Diversity and Pattern	L/M	A substantially depleted indigenous plant community.

Distinctiveness/Special Features	L	The area does not support species at distributional limits, intact sequences, or provide important fauna habitat.
Other Criteria		
Size/Shape	L	The area is small and poorly buffered.
Connectivity	L	The area is isolated from other areas of indigenous vegetation/habitat and does not form an important part of a network of fauna habitat.
Sustainability	M	The area is modified, but the indigenous vegetation (cabbage trees) is resilient.

The area is significant when assessed against the Canterbury Regional Policy Statement criteria, principally because it supports indigenous vegetation that has been reduced to less than 20% of its former extent in the ecological district.

Condition and Management:

The cabbage trees appear healthy. The trees should be protected from stock damage. Any application of herbicide to control weed species should avoid the cabbage trees.