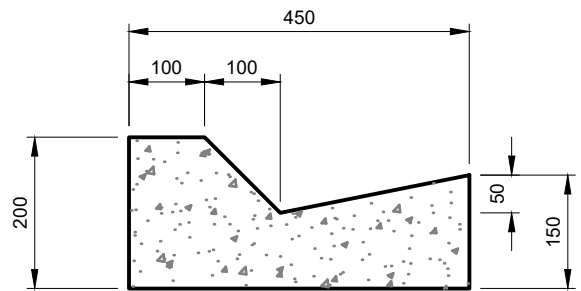
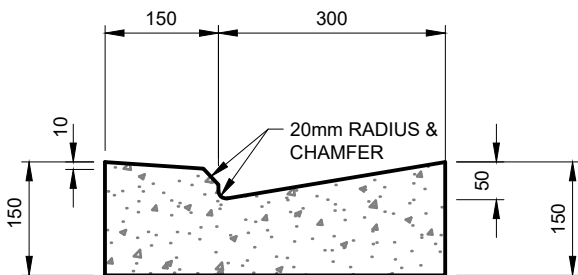


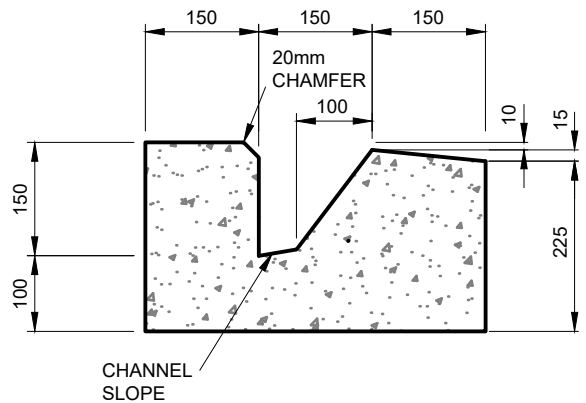
STANDARD KERB & CHANNEL
AS PER NZS 4404:2010



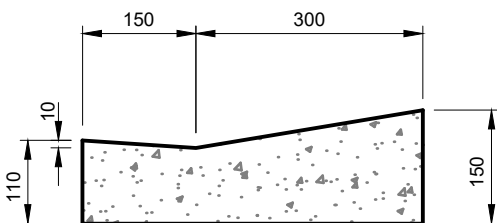
MOUNTABLE KERB & CHANNEL



VEHICLE KERB CROSSING - DROP



VEHICLE KERB CROSSING - MODIFIED



PEDESTRIAN & WHEELCHAIR KERB CROSSING

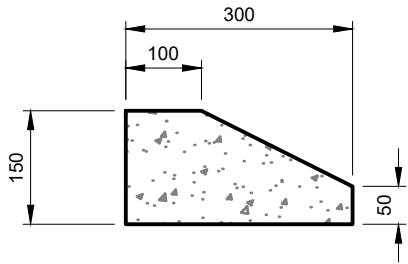
NOTES:

1. CONCRETE TO BE NZS 3109 WITH A 28 DAY STRENGTH - 30mPa
2. A BASECOURSE LAYER UNDER THE K&C AND APRON MUST BE 150mm AP40 M/4 COMPACTED TO TNZ B/2
3. SCALA TEST THE SUBGRADE SURFACE TO ACHIEVE A CBR OF 7 MINIMUM
4. SHOULD THE SUBBASE MATERIAL BE UNSUITABLE A 150mm MINIMUM DEPTH OF AP65 MUST BE LAID AND COMPACTED TO A MAXIMUM DEPTH OF 1m BELOW THE FINISHED LEVEL OF THE CROSSING

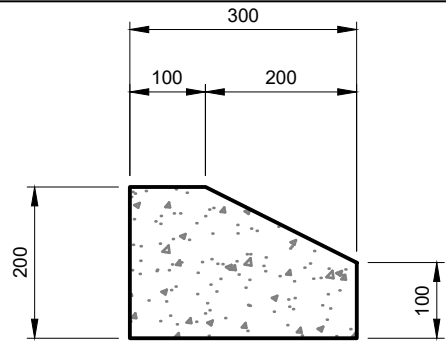
DRAWING USED BY TLA :									
ADC Y/N	TDC Y/N								
MDC Y/N	WDC Y/N								
C		DETAILING UPDATE	MAT	SD					05/20
B		ISSUED FOR CONSTRUCTION	MAT	GRP	SWD				11/15
A		ISSUED FOR MAINTENANCE CONTRACT	MAT	GRP	SWD				07/15
No.	REVISION		BY	CHK	APP.	DATE			

TITLE:	KERB & CHANNEL PROFILES	
	AORAKI ROADING COLLABORATION	

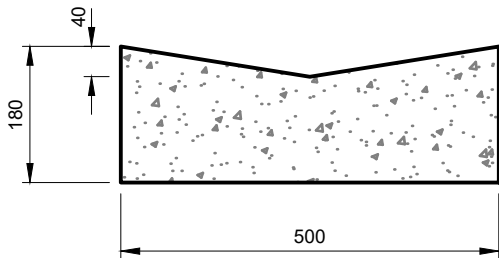
ORIGINAL SCALE (A4):	NTS	
DRAWING NUMBER:	G-101	REVISION: C
SHEET:	1	OF: 2



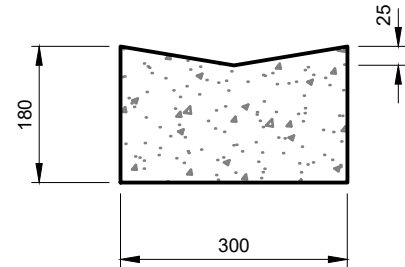
MOUNTABLE ISLAND KERB



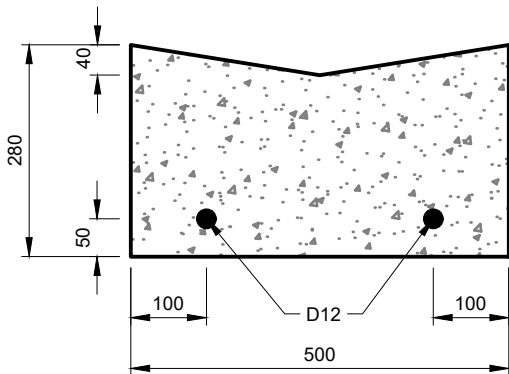
MOUNTABLE NIB KERB
AS PER NZS 4404:2010



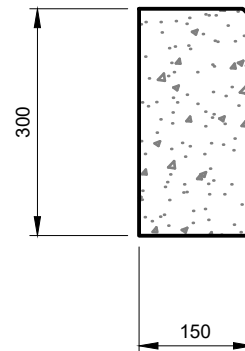
STANDARD DISH CHANNEL



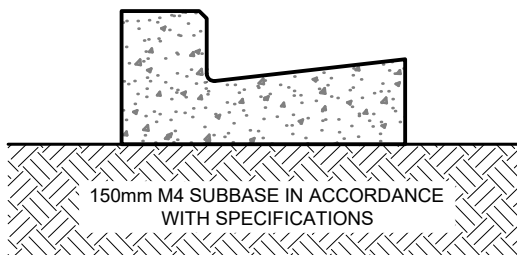
DISH CHANNEL 300 WIDE



REINFORCED DISH CHANNEL



STANDARD NIB KERB
AS PER NZS 4404:2010



FOUNDATION DETAIL

NOTES:

1. CONCRETE TO BE NZS 3109 WITH A 28 DAY STRENGTH - 30mPa
2. A BASECOURSE LAYER UNDER THE K&C AND APRON MUST BE 150mm AP40 M/4 COMPACTED TO TNZ B/2
3. SCALA TEST THE SUBGRADE SURFACE TO ACHIEVE A CBR OF 7 MINIMUM
4. SHOULD THE SUBBASE MATERIAL BE UNSUITABLE A 150mm MINIMUM DEPTH OF AP65 MUST BE LAID AND COMPACTED TO A MAXIMUM DEPTH OF 1m BELOW THE FINISHED LEVEL OF THE CROSSING

DRAWING USED

BY TLA :

ADC Y/N TDC Y/N

MDC Y/N WDC Y/N

NO.	REVISION	BY	CHK	APP	DATE
C	LAYOUT UPDATE				05/20
B	ISSUED FOR CONSTRUCTION				11/15
A	ISSUED FOR MAINTENANCE CONTRACT				07/15

TITLE:

KERB & CHANNEL PROFILES

AORAKI ROADING COLLABORATION

ORIGINAL SCALE (A4):

NTS

DRAWING NUMBER:

G-101

REVISION:

C

SHEET:

2

OF:

2