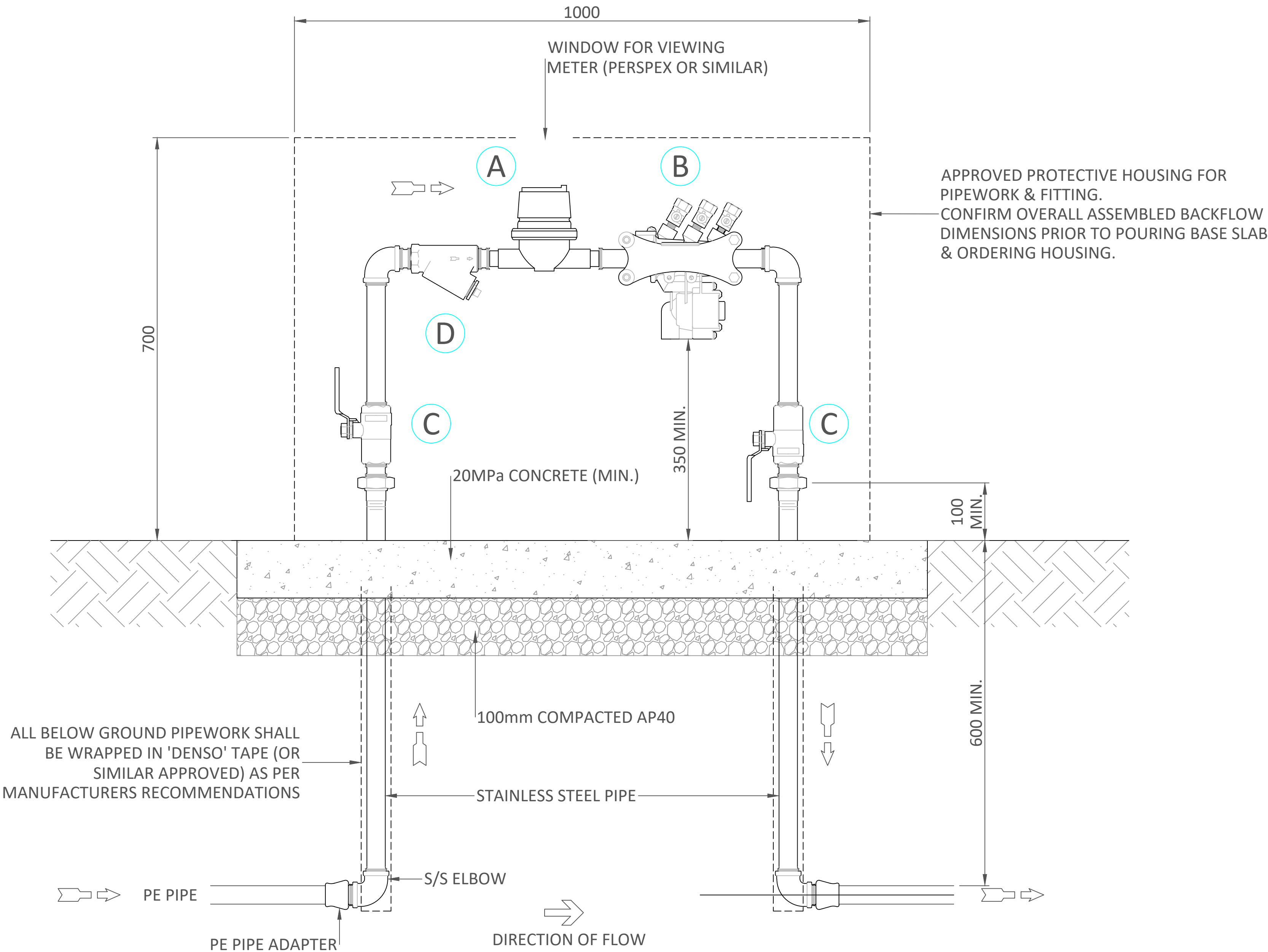
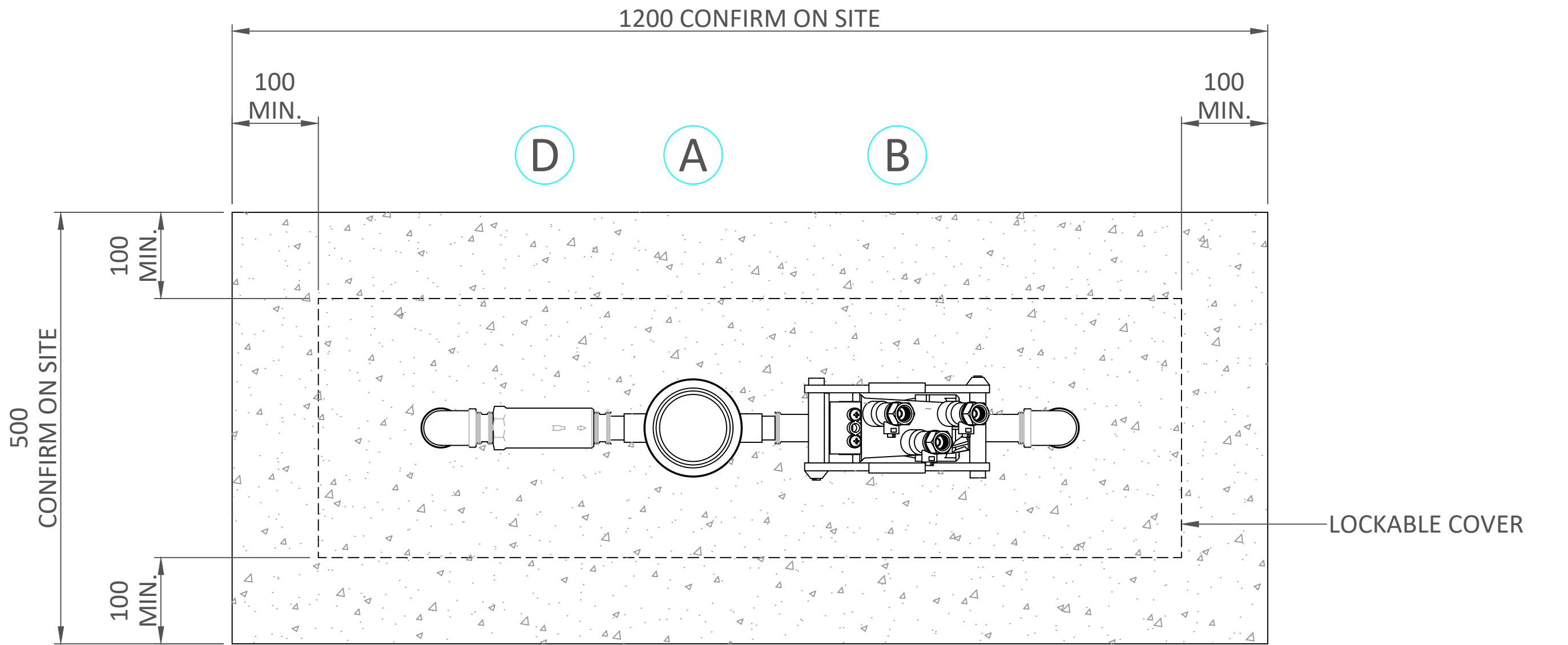
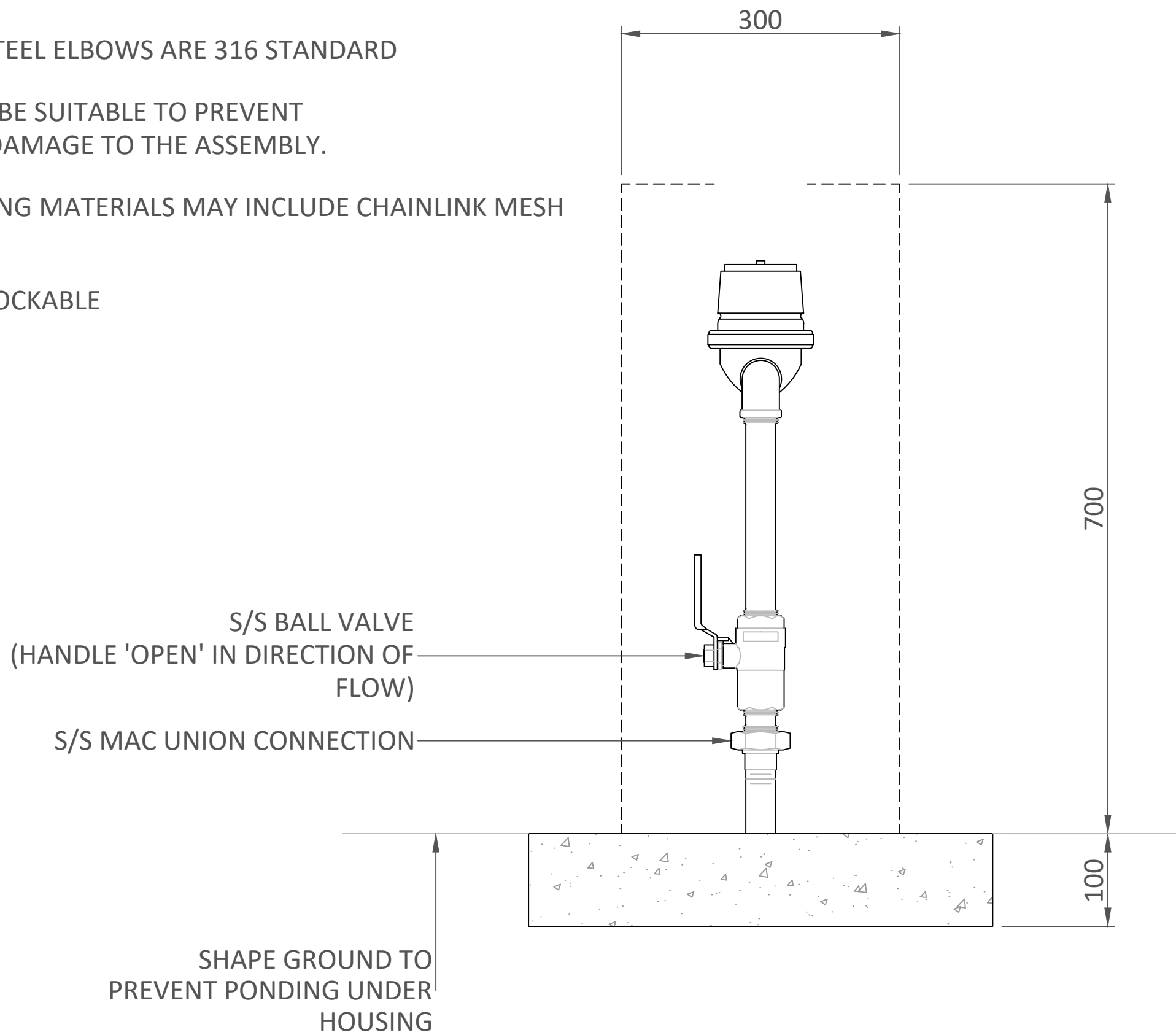


REDUCED PRESSURE ZONE - BACKFLOW DEVICE

PARTS LIST		
SIZE	ITEM	DESCRIPTION
DN20 - DN40 mm ID	A	Water Meter Sensus 620B or similar approved
	B	RPZ Zurn-Wilkins 375XL or simiar approved
	C	Stainless Steel Ball Valve
	D	Wye Strainer 20 mesh screen
SOME METERS MAY REQUIRE A 5x PIPE Ø LENGTH OF STRAIGHT PIPE UPSTREAM & 2x PIPE Ø DOWNSTREAM OF THE METER -IT IS THE CONTRACTORS RESPONSIBILITY TO CHECK AND ALLOW FOR ANY ADDITIONAL FITTINGS NEEDED FOR THE SUPPLIED MAKE & MODEL OF METER OR FITTING.		

NOTES.

1. USE ONLY DRZ BRASS OR STAINLESS FITTINGS
2. ALL STAINLESS STEEL PIPES SHALL BE 316 SCHEDULE 10 MINIMUM.
3. ALL STAINLESS STEEL ELBOWS ARE 316 STANDARD
4. HOUSING SHALL BE SUITABLE TO PREVENT INTERFERENCE/DAMAGE TO THE ASSEMBLY.
5. SUITABLE HOUSING MATERIALS MAY INCLUDE CHAINLINK MESH OR SHEETMETAL
6. UNIT SHALL BE LOCKABLE

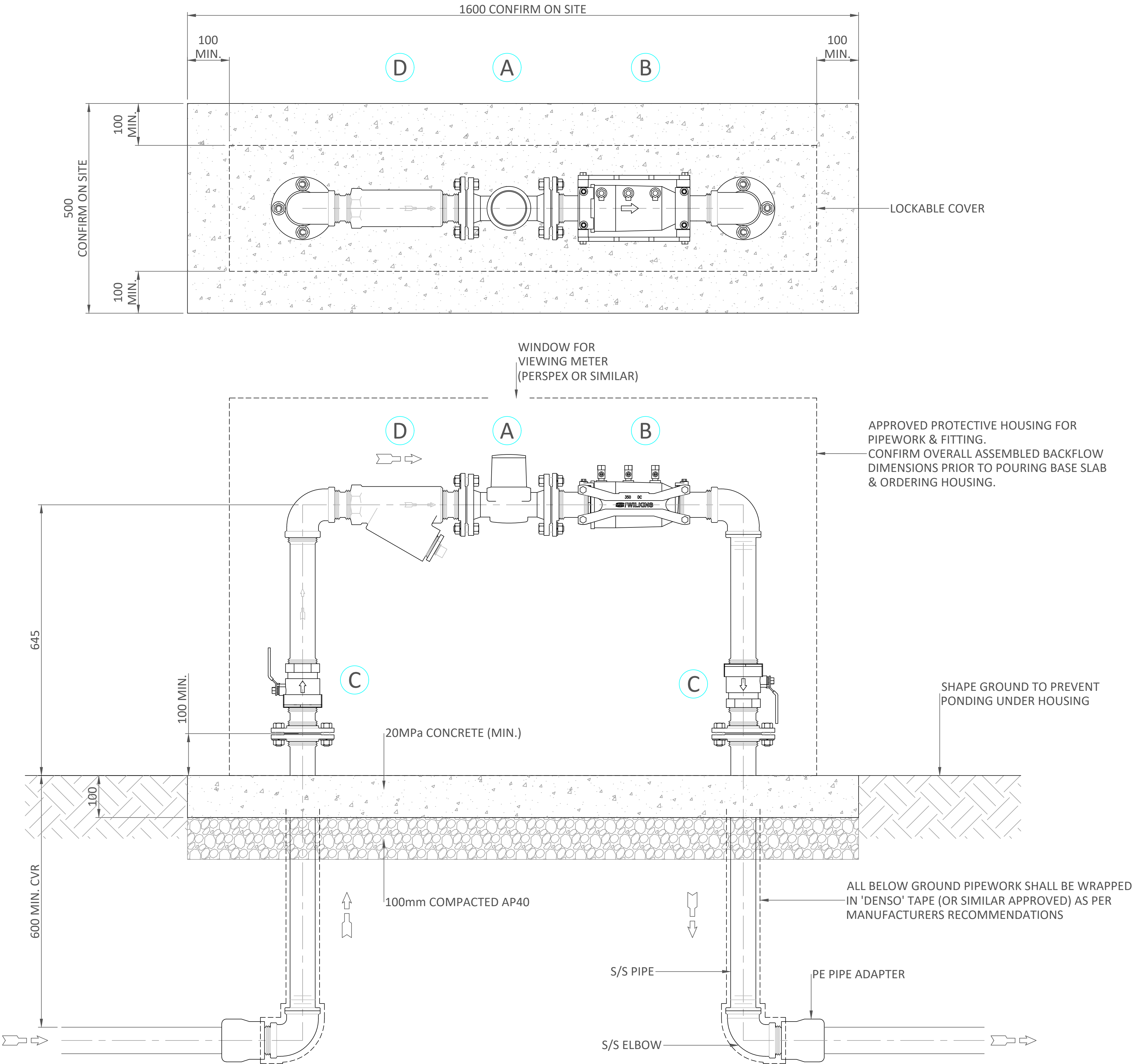


DOUBLE CHECK VALVE - BACKFLOW DEVICE

PARTS LIST		
SIZE	ITEM	DESCRIPTION
DN50 mm ID	A	Water Meter Sensus Meistream Plus or similar approved
	B	Zurn-Wilkins 350 Double Check Assembly or similar approved
	C	Ball Valve Stainless Steel
	D	Wye Strainer 20 mesh screen
SOME METERS MAY REQUIRE A 5x PIPE Ø LENGTH OF STRAIGHT PIPE UPSTREAM & 2x PIPE Ø DOWNSTREAM OF THE METER -IT IS THE CONTRACTORS RESPONSIBILITY TO CHECK AND ALLOW FOR ANY ADDITIONAL FITTINGS NEEDED FOR THE SUPPLIED MAKE & MODEL OF METER OR FITTING.		

NOTES.

- USE ONLY DRZ BRASS OR STAINLESS STEEL FITTINGS
- ALL STAINLESS STEEL PIPES SHALL BE 316 SCHEDULE 10 MINIMUM.
- ALL STAINLESS STEEL ELBOWS ARE 316 STANDARD
- ALL STAINLESS STEEL FLANGES ARE TO AS2129 TABLE E STANDARD.
- HOUSING SHALL BE SUITABLE TO PREVENT INTERFERENCE/DAMAGE TO THE ASSEMBLY.
- SUITABLE HOUSING MATERIALS MAY INCLUDE CHAINLINK MESH OR SHEETMETAL
- UNIT SHALL BE LOCKABLE

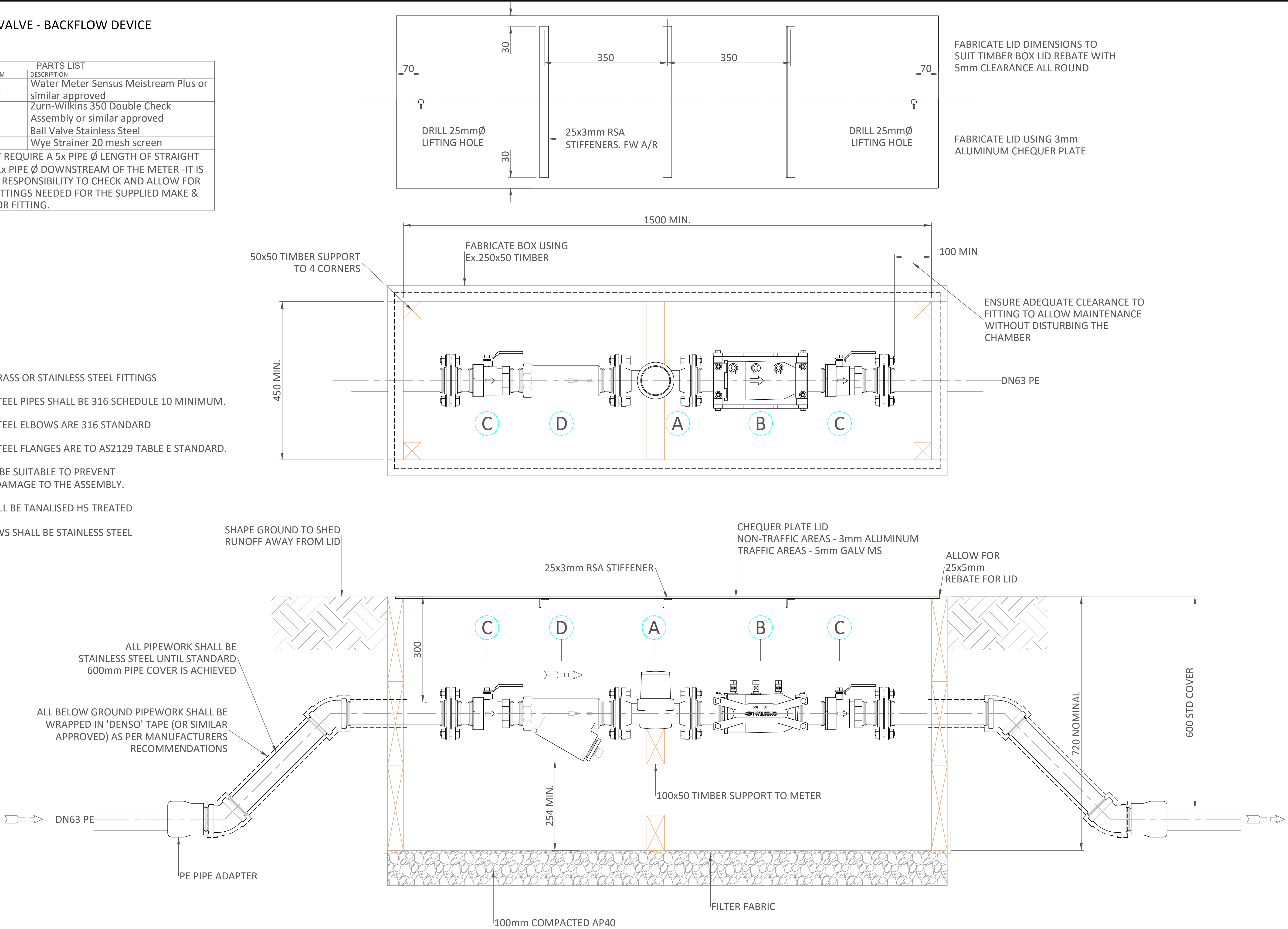


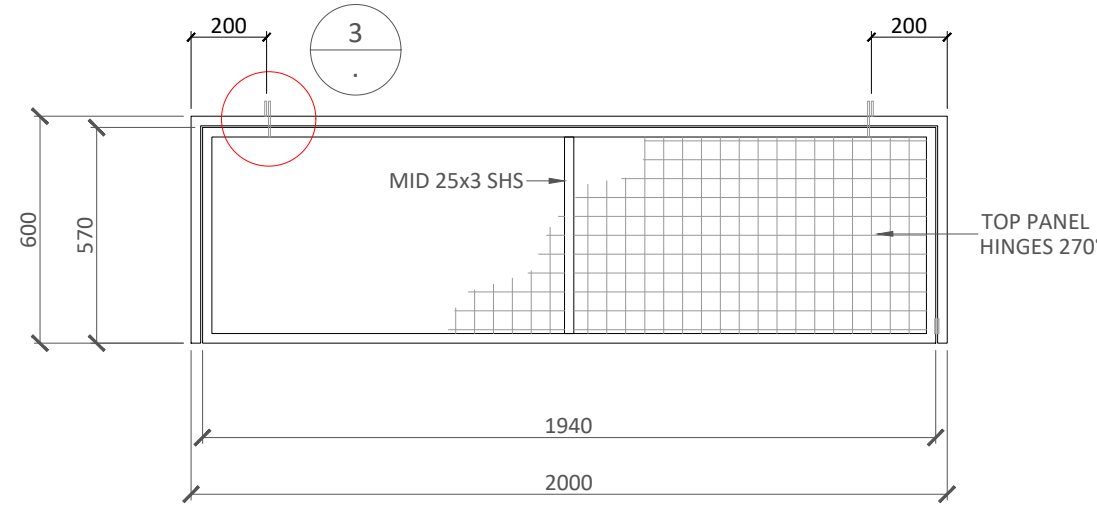
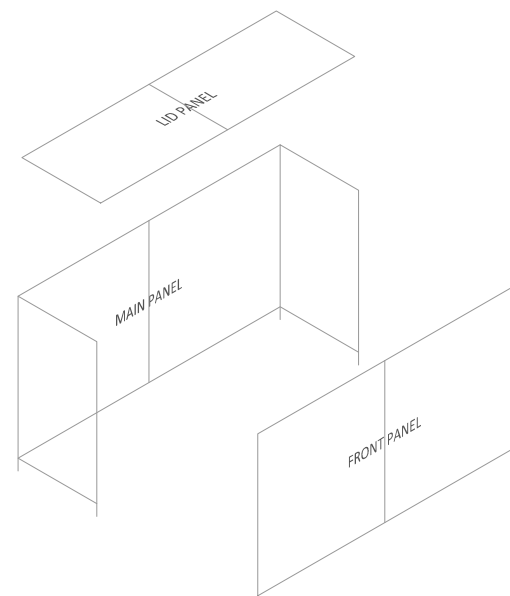
DOUBLE CHECK VALVE - BACKFLOW DEVICE

PARTS LIST		
SIZE	ITEM	DESCRIPTION
DN50 mm ID	A	Water Meter Sensus Meistream Plus or similar approved
	B	Zurn-Wilkins 350 Double Check Assembly or similar approved
	C	Ball Valve Stainless Steel
	D	Wye Strainer 20 mesh screen
SOME METERS MAY REQUIRE A 5x PIPE Ø LENGTH OF STRAIGHT PIPE UPSTREAM & 2x PIPE Ø DOWNSTREAM OF THE METER -IT IS THE CONTRACTORS RESPONSIBILITY TO CHECK AND ALLOW FOR ANY ADDITIONAL FITTINGS NEEDED FOR THE SUPPLIED MAKE & MODEL OF METER OR FITTING.		

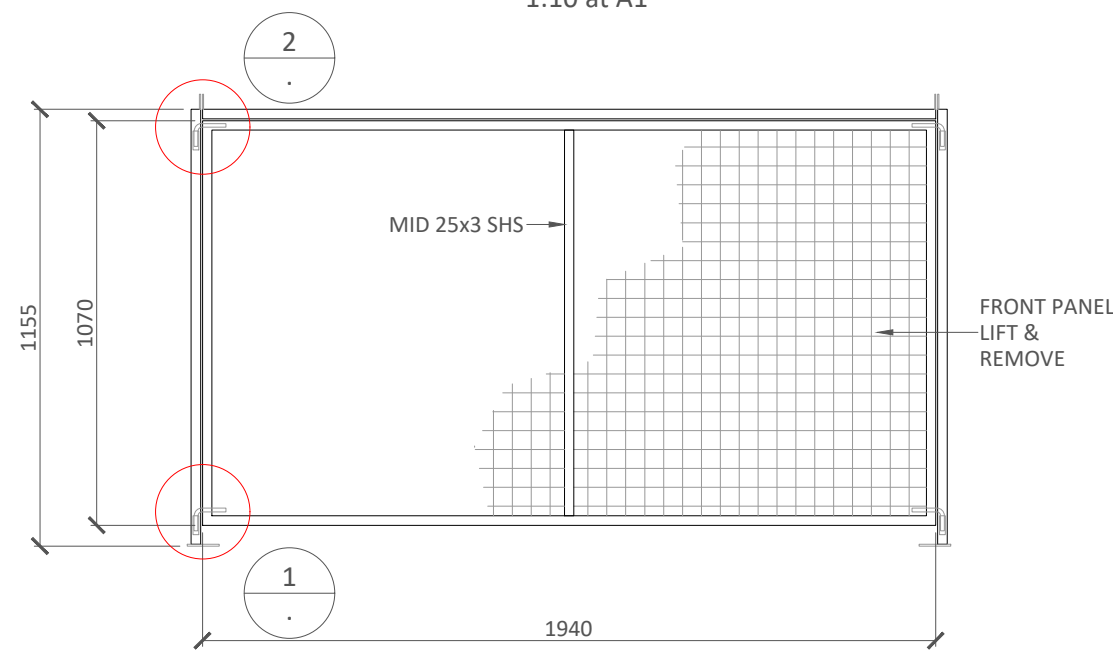
NOTES.

- USE ONLY DRZ BRASS OR STAINLESS STEEL FITTINGS
- ALL STAINLESS STEEL PIPES SHALL BE 316 SCHEDULE 10 MINIMUM.
- ALL STAINLESS STEEL ELBOWS ARE 316 STANDARD
- ALL STAINLESS STEEL FLANGES ARE TO AS2129 TABLE E STANDARD.
- HOUSING SHALL BE SUITABLE TO PREVENT INTERFERENCE/DAMAGE TO THE ASSEMBLY.
- ALL TIMBER SHALL BE TANALISED H5 TREATED
- ALL NAILS/SCREWS SHALL BE STAINLESS STEEL

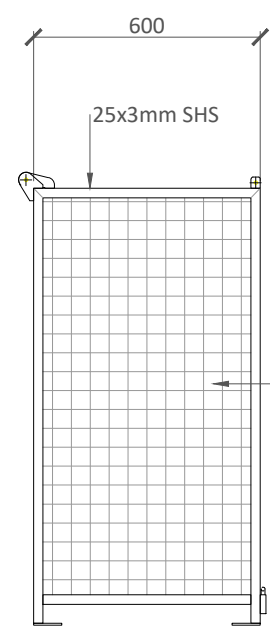




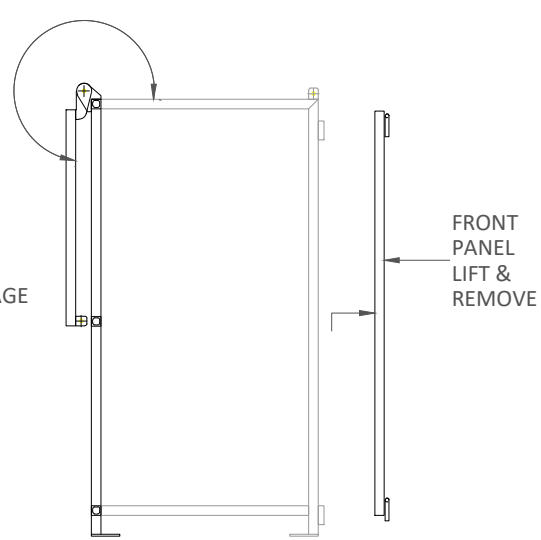
PLAN
1:10 at A1



FRONT ELEVATION
1:10 at A1

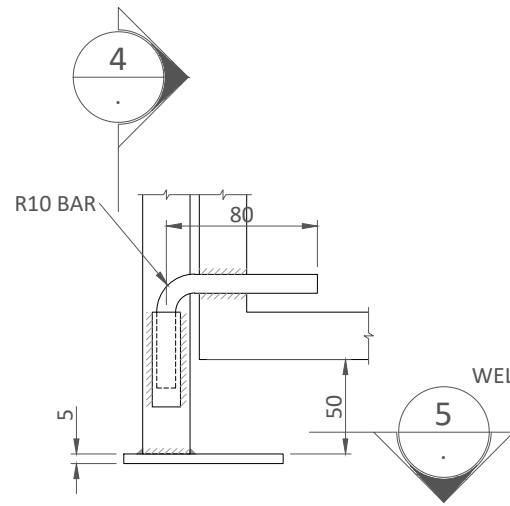


SIDE ELEV
1:10 at A1

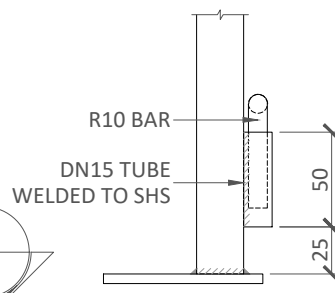


OPENED CAGE
1:10 at A1

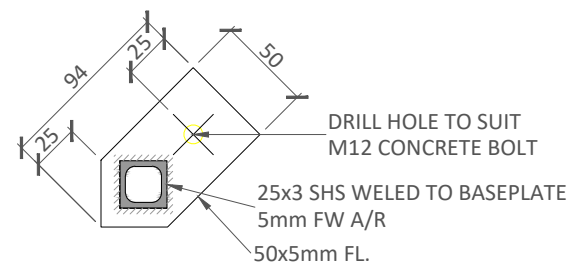
- NOTES.
1. ALL DIMENSIONS SHALL CHECKED TO ENSURE CAGE FITS BACKFLOW PREVENTER ASSEMBLY
 2. ALL FRAME MEMBERS SHALL BE 25x25x3mm SHS
 3. CAGE SHALL BE 228T MESH (40x50mm HOLES)
 4. ALL COMPONENTS SHALL BE HOT DIP GALVANISED AFTER FABRICATION.



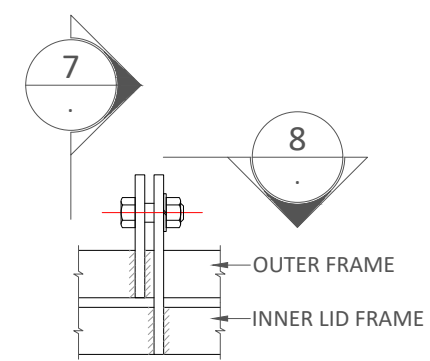
1 DETAIL
1:2 at A1



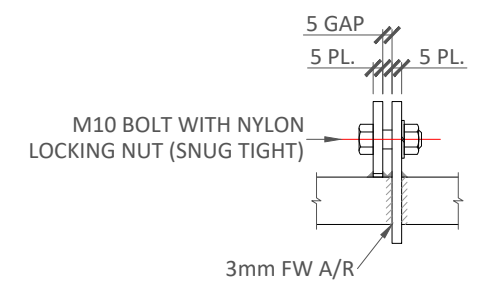
4 DETAIL
1:2 at A1



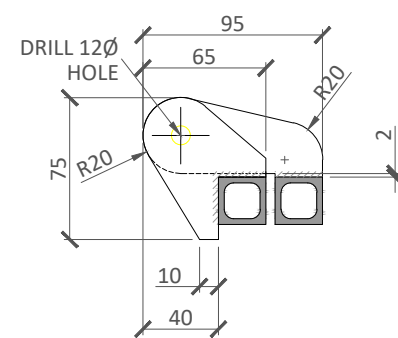
5 DETAIL
1:2 at A1



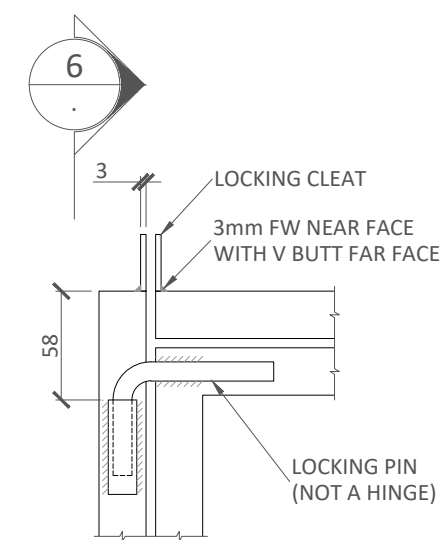
3 DETAIL
1:2 at A1



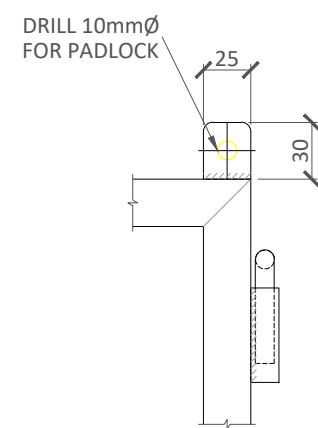
8 DETAIL
1:2 at A1



7 DETAIL
1:2 at A1



2 DETAIL
1:2 at A1



6 DETAIL
1:2 at A1

NCDI = NYLON COATED DUCTILE IRON
FLANGE BOLTS = DN100 - 4 BOLTS, DN150-DN250 - 8 BOLTS
COUNCIL MAY REQUIRE THAT AN RPZ BE FITTED INSTEAD OF A DOUBLE CHECK VALVE
SOME METERS MAY REQUIRE A 5x PIPE Ø LENGTH OF STRAIGHT PIPE UPSTREAM & 2x PIPE Ø DOWNSTREAM OF THE METER -IT IS THE CONTRACTORS RESPONSIBILITY TO CHECK AND ALLOW FOR ANY ADDITIONAL FITTINGS NEEDED FOR THE SUPPLIED MAKE & MODEL OF METER OR FITTING.

