

AGENDA

Orari-Temuka-Opihi-Pareora Water Zone Committee Meeting Monday, 7 September 2020

Date Monday, 7 September 2020

Time 9.30am

Location Council Chamber, Council Building, King George
Place, Timaru

File Reference 1368707

Orari-Temuka-Opihi-Pareora Water Zone Committee

Notice is hereby given that a meeting of the Orari-Temuka-Opihi-Pareora Water Zone Committee will be held in the Council Chamber, Council Building, King George Place, Timaru, on Monday 7 September 2020, at 9.30am.

Orari-Temuka-Opihi-Pareora Water Zone Committee Members

Lucy Millar (Chairperson) Phil Driver, Suzanne Eddington, John Henry, , Clr Anne Munro, Clr Elizabeth McKenzie, Luke Reihana, Glen Smith, Mark Webb, Clr Barbara Gilchrist and Clr Tom O'Connor

Quorum – no less than 7 members

Order Of Business

1	Opening Karakia and Apologies	5
2	Identification of Items of Urgent Business.....	5
3	Identification of Matters of a Minor Nature	5
4	Declaration of Conflicts of Interest	5
5	Chairperson’s Report.....	5
6	Confirmation of Minutes	6
6.1	Minutes of the Orari-Temuka-Opihi-Pareora Water Zone Committee Meeting held on 3 August 2020.....	6
7	Reports	14
7.1	Update Committee Members Activities.....	14
7.2	Youth Representative	16
7.3	ZIPA Non Regulatory Recommendations	17
7.4	Otipua Saltwater Creek Catchment Annual Report	25
7.5	ECan Zone Delivery Update	32
7.6	Facilitator's Update	43
8	Consideration of Urgent Business Items.....	46
9	Consideration of Minor Nature Matters.....	46

- 1 Opening Karakia and Apologies**
- 2 Identification of Items of Urgent Business**
- 3 Identification of Matters of a Minor Nature**
- 4 Declaration of Conflicts of Interest**
- 5 Chairperson's Report**

6 Confirmation of Minutes

6.1 Minutes of the Orari-Temuka-Opihi-Pareora Water Zone Committee Meeting held on 3 August 2020

Author: Joanne Brownie, Governance Support Officer

Recommendation

That the Minutes of the Orari-Temuka-Opihi-Pareora Water Zone Committee Meeting held on 3 August 2020 be confirmed as a true and correct record of that meeting.

Attachments

- 1. Minutes of the Orari-Temuka-Opihi-Pareora Water Zone Committee Meeting held on 3 August 2020**

MINUTES

Orari-Temuka-Opihi-Pareora Water Zone Committee Meeting Monday, 3 August 2020

Minutes of Timaru District Council
Orari-Temuka-Opihi-Pareora Water Zone Committee Meeting
Held in the Council Chamber, Council Building, King George Place, Timaru
on Monday, 3 August 2020 at 1.30pm

Present: Cr Barbara Gilchrist (Acting Chairperson), Mr Phil Driver, Ms Suzanne Eddington, Mr John Henry, Ms Lucy Millar, Clr Anne Munro, Mr Luke Reihana, Mr Glen Smith, Mr Mark Webb, Cr Tom O'Connor

In Attendance: Elizabeth Soal (Chief Executive Irrigation NZ)(for item 7.1)
Clr Paddy O'Reilly (Temuka Community Board)

Lesley Woudberg (Team Leader Zone Facilitator), Caroline Hart (ECan Senior Strategy Manager), Chris Eccleston (ECan Southern Zone Manager), Brad Waldon-Gibbons (Tangata Whenua Facilitator), Bailey Lissington (pending youth representative), Rhys Taylor (Community Engagement Coordinator)

John Henry opened the meeting with a karakia.

1 Apologies

The meeting noted the apologies from Committee member Clr Elizabeth McKenzie and from Lloyd McMillan, liaison representative from the Temuka Community Board.

2 Identification of Items of Urgent Business

Election of Chairperson and Deputy Chairperson

The Committee agreed that it would be advisable to have the discussion on the Committee's Terms of Reference, prior to the appointment of a new Chairperson and Deputy Chairperson, in order that the new officers could understand the roles and objectives of the Committee going forward, before putting themselves forward for these positions.

Resolution 2020/15

Moved: Barbara Gilchrist

Seconded: Phil Driver

That the Committee proceeds with the agenda as presented, but at the conclusion of the agenda, the Committee adjourns the meeting, discusses the Terms of Reference of the Committee in the workshop, then reconvenes the public meeting to consider the urgent business item - Election of Chairperson and Deputy Chairperson.

Carried

3 Identification of Matters of a Minor Nature

The meeting agreed to discuss the following minor nature matters –

- **Te Ana Wai Catchment Group** invitation to join the Opuha/Upper Opihi Group's next meeting on the evening of 10 August, at Fairlie Rugby clubhouse, with speaker Roger Dalrymple, from the Rangitikei Rivers Community Collective Inc, who will talk about his catchment group experiences and offer some guidance as to how to rebuild and refocus catchment groups.
- **Government initiatives** – the Facilitator provided information on the
 - Jobs for nature
 - Three Waters Reform Programme.

4 Declaration of Conflicts of Interest

There were no conflicts of interest declared.

5 Confirmation of Minutes

5.1 Minutes of the Orari-Temuka-Opihi-Pareora Water Zone Committee Meeting held on 6 July 2020

Lucy Millar advised that her apology for the July meeting had not been recorded.

Resolution 2020/16

Moved: Barbara Gilchrist

Seconded: Tom O'Connor

That the Minutes of the Orari-Temuka-Opihi-Pareora Water Zone Committee Meeting held on 6 July 2020 be confirmed as a true and correct record of that meeting, subject to Lucy Millar being added to the apologies for that meeting.

Carried

Clause 2.1 Resignation Letter and Public Comments

A request was made for a copy of the resignation letter from former OTOP Committee member Herstatt Ulrich, on the basis that he had made public comment in respect of his resignation and yet Committee members have not been made aware of the content of the letter. A redacted version of the letter, accompanied by an explanatory memo, was tabled at the meeting. The redaction was required due to an ECan officer being identified in the letter.

Following reading of the letter, comment was made by committee members that certain sentiments expressed in the letter were not shared, however it was agreed that the work of the Zone Committee during the development of the Zone Implementation Programme and the Addendum was a very difficult process and more complex and demanding than people may have realised. ECan officers had provided technical and process support during this challenging process. Some frustrations were shared by the Committee during the process but this was reflective of the complexities and time pressures involved.

Resolution 2020/17

Moved: Barbara Gilchrist

Seconded: Phil Driver

That the copy of the resignation letter and accompanying memo be received and noted.

Carried

Clause 7.4 –Pest Control

Clr O'Connor advised that Andy Cox from the Department of Conservation would be prepared to address the Zone Committee if pest control was ever to be part of its role.

Clause 5 - Externalities

Discussion on externalities will take place in the workshop, with further information to be provided by the Senior Strategy Manager.

6 Public Forum

Clr Paddy O'Reilly, representing the Temuka Community Board, addressed the Committee, noting a recent combined Community Boards discussion on setting goals and aspirations for the Timaru District Council Long Term Plan. One issue which arose in the discussions was the health of local rivers. Participants at the meeting were keen to see improvements in water quality and the Temuka Community Board would be interested in working with OTOP to help achieve improvements and possibly collaborate on a project (eg plantings).

The Committee discussed potential links between catchment groups, community boards and OTOP but it was agreed that the appropriate liaison between OTOP and the community boards should be via the Council representative on OTOP.

A request was made for a list noting which OTOP members are members of which catchment groups. The Facilitator will collate this list and circulate it.

7 Reports

7.1 Presentation from Irrigation New Zealand

Elizabeth Soal, Chief Executive of Irrigation New Zealand gave a presentation on the Building Trust Project (now called Know Your Catchment), which was piloted in the Waitaki catchment, and involves a portal that can be accessed to assist with optimum irrigation management.

The project has been soft-launched and will be further refined, before expanding the pilot to extend to other catchments. The presentation will be circulated.

7.2 Youth Representation for OTOP Committee

The Committee discussed the possibility of changing the Committee meeting day and time to accommodate a youth member on the OTOP Zone Committee. Bailey Lissington, who was introduced at the previous meeting, indicated he could be available on Thursdays and Fridays or Monday mornings.

The Committee agreed to hold future OTOP meetings on the first Thursday of the month at 3pm, with the intention of finishing by 5pm.

7.3 Update from Zone Committee Members

Pareora Catchment Society - The Committee considered a report from Clr Tom O'Connor, in his capacity as Secretary of the Pareora Catchment Society. It is the intention to establish a regular reporting pattern to the Committee. The Society has a keen group of farmers and plans to talk to a wider range of people in the community as it collates project ideas.

Waitarakao Washdyke Working Group – Clr Gilchrist reported that after a lull in activity, it is hoped that this group has now got a new impetus. A question was raised as to whether industry pollution will be addressed, as part of the improvements to the lagoon. ECan is looking at both air and water pollution in this area and conducting discussions and reviews with a wide group of people, including possible offenders.

Orari Catchment Group- Glen Smith briefly reported on this group which is currently looking at wallaby control, and continues to have water quality as a focus.

Resolution 2020/18

Moved: Barbara Gilchrist

Seconded: Phil Driver

That the report be received and noted.

Carried

7.4 Zone Facilitator's Updates

The Committee considered the report by the Zone Facilitator. There are a number of matters arising from central government including major issues such as Three Waters and the possible repealing of the Resource Management Act.

Comment was made that three waters could be the biggest upheaval in local government in 30 years. While the objectives might be commendable, the process could be problematic, with the repercussions on water zone committees unclear at this early stage.

Resolution 2020/19

Moved: Barbara Gilchrist

Seconded: Phil Driver

That the information be received and noted.

Carried

8 Consideration of Minor Nature Matters

Appointment of New Committee Members – once the Terms of Reference are confirmed the refresh process can commence. It is hoped to do this by the end of the year. If this process is delayed for any reason, there are options in the current Terms of Reference to co opt members onto the Committee to fill the vacancies.

Otipua-Saltwater Creek Catchment Group Annual Report – this is being prepared and the Community Engagement Coordinator will present it to a future meeting of the OTOP Committee.

Retirement of Mark Webb – continuing the commendations from the last meeting, retiring member Mark Webb was personally thanked for his time and effort into the OTOP process. He was essentially the bridge between landowners and ECan in regard to the Hekeao/Hinds catchment, walking every drain to record each reach of each drain, which was much appreciated by land owners. He demonstrated ability to solve difficult issues around the table, which proved valuable when the committee was grappling with complex problems. Mark responded saying he had enjoyed the process, made friends, and valued the opportunity to make connections in the community.

The meeting adjourned at 3pm for a workshop on the Committee's Terms of Reference.

The meeting reconvened at 4.25pm.

9 Election of Chairperson and Deputy Chairperson

Chairperson

Nominations were called for the position of Chairperson of the Orari-Temuka-Opihi-Pareora Water Zone Committee.

Lucy Millar was nominated by Sue Eddington and seconded by Clr Anne Munro.

Phil Driver was nominated by Clr Tom O'Connor and seconded by Glen Smith.

Both nominees briefly addressed the meeting.

Phil Driver supported the proposed action plan for the Committee and said all members should come to the next meeting with 3-4 priorities for the action plan; he encourages everyone to undertake duties relating to the work of OTOP between the formal meetings, interacting with the community. He noted with the regulatory work out of the Committee's control, what the Committee can undertake and where it can have influence is now mostly voluntary, he supports a 'bottom-up' approach.

Lucy Millar said she is about getting things done, only having meetings that are necessary and will aim to streamline things; she would support co-opting catchment group representatives onto the OTOP Committee until the refresh process fills the vacancies.

In acknowledgement of Lucy Millar's nomination and in support of Lucy Millar becoming the Chairperson, Phil Driver then withdrew his nomination.

There now being only one nomination, Lucy Millar was declared elected Chairperson of the Orari-Temuka-Pareora Water Zone Committee, and was congratulated on her appointment.

Deputy Chairperson

Nominations were called for the position of Deputy Chairperson of the Orari-Temuka-Opihi-Pareora Water Zone Committee.

Phil Driver was nominated by Clr Tom O'Connor and seconded by Glen Smith.

There being no further nominations, Phil Driver was declared Deputy Chairperson of the Orari-Temuka-Opihi-Pareora Water Zone Committee.

Clr Gilchrist was thanked for her interim chairmanship.

Luke Reihana closed the meeting with a karakia.

The Meeting closed at 4.35pm.

.....
Chairperson

7 Reports

7.1 Update Committee Members Activities

Author: Lesley Woudberg, Team Leader Zone Facilitator

Authoriser:

Recommendation

That That the OTOP zone committee;

1. **Notes** the report and activities members have been involved in.
2. **Follow** up onby doing ...

Purpose of Report

- 1 To provide the OTOP zone committee with an opportunity to inform each other of the activities they have been involved in over the last month that contributes to implementing the CWMS in the OTOP zone.

Discussion

Catchment Groups

- 2 Several zone committee members attended a catchment group meeting on the 10 August. Committee members may wish to highlight their key messages from the meeting and further thoughts on the role of the zone committee in supporting catchment groups.
- 3 Appendix 1 Catchment Groups in the OTOP Zone

Council Strategic Directions and Long-term Plans

- 4 Councillors may wish to provide an update on the deliberations and timeframes for their Long-Term Plans

Other Activities

APPENDIX 1 Catchment Groups in the OTOP Zone

Catchment Group	Zone Committee link
Lower Opihi	
Pareora	Cr Tom O'Connor Phil Driver
Lower Orari	Glen Smith
Waihi/Te Moana	
Te Ana Wai	Cr Anne Munro
Kakahu	
Opuha and Upper Opihi	
Orari River Protection Group	
Otipua/Saltwater Creek	
Waitarakao	Cr Barb Gilchrist

Attachments**Nil**

7.2 Youth Representative

Author: Lesley Woudberg, Team Leader Zone Facilitator

Authoriser:

Recommendation

That That the OTOP zone committee;
Agrees to

Purpose of Report

- 1 To provide the OTOP zone committee with an opportunity to identify and agree on how they will support youth participation in the committee and the committee's action plan.

Attachments

Nil

7.3 ZIPA Non Regulatory Recommendations

Author: Lesley Woudberg, Team Leader Zone Facilitator

Authoriser:

Recommendation

That the OTOP zone committee;

1. **Notes** the report
2. **Agrees** to focus on;
 - a. Xxx...5 October
 - b. Xxx...2 November
 - c. Xxx ...7 December

Purpose of Report

- 1 To provide the OTOP zone committee with an opportunity identify and agree on its focus for the next three meetings, or workshops or fieldtrips.

Discussion

- 2 Currently the committee has three meetings scheduled to the end of the year (5 October, 2 November and 7 December).
- 3 Raising awareness and connecting people that inspires and supports “practical on-ground” action has been a common theme that has come through the recent zone committee workshops and discussion on the zone committee Terms of Reference.
- 4 The zone committee has thought of a number of actions that supports this shift in focus from Plan Change 7 to “practical on-ground” action. Appendix 1 Lists the 49 Non-Regulatory Actions identified in the Zone Committee ZIPA.
- 5 In addition, there will be a need to refresh community members in the near future as appointments expire.
- 6 Given this current context, the committee may wish to consider using the next three months to focus on non-regulatory action and the recruitment of potential new members.
- 7 Possible activities:
 - jointly host an event
 - celebrate “good stuff”
 - walk in someone else’s gumboots – attend their meetings, find out what their interests are, are opportunities to connect and work together on a project.

Attachments

- 1. OTOP ZIPA Non-Regulatory Recommendations**

APPENDIX 1

OTOP ZIPA NON-REGULATORY RECOMMENDATIONS

December 2018

Final ZIPA recommendations			Non Regulation
ZIP	Zipsub	Text	Non Regulation
4.0.0.		ZONE WIDE RECOMMENDATIONS	
4.1.0.		Catchment Groups	
4.1.1.		Recommendation: Support Catchment Groups	
	i	Regional Council and industry support Catchment Groups in the OTOZ Zone, where they are working to address catchment specific issues.	Support
4.2.0.		DRINKING WATER SUPPLIES	
4.2.1.		Recommendation: Water Quality Outcomes for Groundwater	
	ii	Where an individual drinking water supply bore exceeds a nitrate nitrogen concentration value of 11.3 mg/l in any sample, an investigation will be undertaken to identify the source of the contamination and remedial action taken as appropriate.	Science
4.2.2.		Recommendation: Community Drinking Water Supply Protection Zones	
4.2.3.		Recommendation: Monitoring, Awareness, and Education	
	i	Regional council, South Canterbury District Health Board and district councils to continue to assess risks to community drinking water supply wells, and raise awareness of risks and management options with private drinking water supplies.	Education
	ii	Regional council provides education and support for ensuring compliance with CDWPZs.	Education
		a. Actively promoting well-head protection;	Education
		b. Ensuring maps of protection zones are easily accessible by the community;	Education
		c. Hosting community workshops to improve awareness of protection zones, risk and actions landowners can take;	Education
		d. Finalising farming and household waste guidelines to distribute to landowners;	Guidance

		e. Providing one-on-one contact with land owners in CDWP zones regarding their obligations.	Education
4.2.4.		Recommendation: Restrictions on Community Drinking Water Supply Abstractions	
4.3.0.		RECOGNITION AND PROTECTION OF CULTURALLY SIGNIFICANT SITES	
4.3.1.		Recommendation: Sites of Wāhi Taonga, Wāhi Tapu, and Nohoanga	
4.3.2.		Recommendation: Tuhituhi Neherā Rock Art Sites	
	ii	The regional council and district councils work with Papatipu Rūnanga to develop non-statutory measures to protect and enhance tuhituhi neherā sites.	Other
4.3.3.		Recommendation: Protection and Enhancement of Waipuna (Springs)	
	ii	The regional councils and district councils work with Papatipu Rūnanga to develop non-statutory measures to protect and enhance waipuna identified as culturally significant and/or within the waipuna zone.	Other
4.4.0		PROTECTION AND ENHANCEMENT OF MAHINGA KAI	
4.4.1		Recommendation: Mahinga Kai Freshwater Outcome	
4.4.2		Recommendation: Mahinga Kai Protection in Farm Environment Plans	
4.4.3		Recommendation: Mahinga Kai Protection in Management Plans	
4.5.0.		PROTECTION AND ENHANCEMENT OF BIODIVERSITY	
4.5.1.		Recommendations: Information and Sharing	
	i	For the purposes of maintaining indigenous biological diversity, regional and district councils provide information to landowners about the rules controlling vegetation clearance and monitor the outcomes.	Education
	ii	Regional council, district councils and the Department of Conservation work together in identifying and prioritising initiatives for biodiversity enhancement and remediation.	Work together
4.5.2.		Recommendation: District Council Plan Development and Plan Reviews	
	i	When district councils are reviewing district plans, they:	
4.5.3.		Recommendation: Farm Environment Plans and Management Plans	
4.5.4.		Recommendation: High Naturalness Waterbodies	
4.5.5.		Recommendation: Protection for Named Waterbodies	
4.5.6.		Recommendation: Riparian Management	
4.5.7.		Recommendation: Channel Straightening and Waterbody Realignments	
4.5.8.		Recommendation: Vegetation	
4.5.9.		Recommendation: Non-Statutory	
	i	Regional council and industry support collective actions to reduce losses of contaminants and work on wetland and waterway enhancement, and biodiversity projects, prioritising this support in at-risk catchments.	Work together
	ii	Regional council and industry groups develop good management practice guidelines for the tussock cover ecosystem and other biodiversity values.	Guidance
	iii	Farm Environment Plans, including those developed by industry groups, encourage the identification of further opportunities where new indigenous biodiversity could be established on farm.	Guidance
	iv	Regional council and industry provide guidance and information on the protection of biodiversity values through a web-based tool.	Guidance
	v	Land Information New Zealand and the Department of Conservation work with regional and district councils to ensure any tenure review process considers the biological diversity outcomes sought by the Committee.	Work together

	vi	Regional council coordinates work to promote habitat suitable for bird nesting and to manage waterbodies for the best cultural, ecological, coastal and flood outcomes.	Work together
	vii	Regional council implements the Canterbury Regional Pest Management Plan regarding wilding pines and other invasive forestry species to further protect biodiversity.	Other
	ix	A biodiversity action group, or similar, with membership from Papatipu Rūnanga, the community and local bodies, is established to coordinate and promote biodiversity actions in the zone, and investigations are made into the establishment of a fund to assist with projects in the zone which do not qualify for Immediate Steps Funding, but which will promote and enhance biodiversity within the zone.	Funding
		a. coastal margins and lagoons to support indigenous biodiversity and over time provide a biodiversity corridor;	Funding
		b. the protection of long tailed bats;	Funding
		c. protection and enhancement of braided river habitat;	Funding
		d. opportunities to protect high value species, sites or habitats in the zone, especially in the upper catchments.	Funding
4.6.0.		FORESTRY AND WATER YIELD	
4.6.1.		Recommendation: Flow Sensitive Catchments	
4.6.2.		Recommendation: Forestry	
4.7.0.		PROTECTION OF UPPER CATCHMENTS	
4.7.1.		Recommendations: Further Protection of Upper Catchments	
	iv	Erosion control is managed with species other than invasive and/or plantation forestry species.	Guidance
	v	Regional council controls invasive species of forestry trees to protect biodiversity and water yield.	Other
4.8.0.		WATER QUALITY AND ECOSYSTEM HEALTH	
4.8.1.		Recommendation: Water Quality Outcomes (Groundwater and Spring-fed Streams) - Zone Wide	
4.8.1A		Recommendation: Water Quality Outcomes (Rivers and Lakes) - Zone Wide	
4.8.2.		Recommendation: Pathways for Achieving Water Quality Outcomes	
	ix	Industrial activities to adopt the Best Practicable Option (BPO) for the treatment and disposal of discharges.	Other
	x	Where periphyton and macrophyte outcomes are not met, investigate and implement options to achieve these e.g. flow/shading/nutrients/sediment.	Science
	xi	Operators of reticulated stormwater networks to apply for a discharge permit on or before 30 June 2018 and prepare a stormwater management plan.	Other
	xii	Ground and surface water replenishment schemes such as Managed Aquifer Recharge and/or Targeted Stream Augmentation are enabled to improve freshwater quality across the zone.	Funding
4.8.3.		Recommendation: Supporting Change	
	i	Regional council and industry:	
		a. Support farmers' move to Good Management Practices (GMP).	Support
		b. Provide advice and support for successful and effective riparian planting.	Support
		c. Explore options for initiatives that enhance, improve or protect water quality (for example enhancing wetlands, riparian planting).	Support

		e. Within six months of the sub region plan change for the OTOP zone being made operative regional council develop a robust water quality monitoring and reporting programme to inform plan effectiveness and review.	Science
		f. Regional council, in consultation with Papatipu Rūnanga and community groups, develop and support monitoring programmes that evaluate the effectiveness of both regulatory and non-regulatory interventions and initiatives, and enable communities to monitor their own environment.	Science
		g. Regional council makes provision in its Long-Term Plan for surveying, identifying and mitigation of Emerging Organic Contaminants, based on risk assessments.	Funding
		h. Regional council make provision in its Long-Term Plan for some targeted monitoring of Management Plans, in high risk and priority areas.	Funding
4.8.4.		Recommendation: <i>Phormidium</i>	
	ii	Regional council completes further locally relevant research on <i>Phormidium</i> controls for future decision making.	Science
4.8.5.		Recommendation: Swimming Sites	
4.9.0.		WATER QUALITY	
4.9.1.		Recommendations: General	
4.9.2.		Recommendation: Stream Depletion Methodology	
4.9.3.		Recommendation: Allocation Limits and Transfers	
4.9.4.		Recommendation: Preventing Over-Allocation	
4.9.5.		Recommendation: Phasing out Existing Over-Allocation	
	i	Water User Groups are incentivised to reduce allocation in the establishment of environmental flow and allocation regimes.	Support
4.9.6.		Recommendation: Introduced Out-of-Catchment Water	
4.9.7.		Recommendation: Resource Consent Reviews and Priority	
4.9.8.		Recommendation: Global Water Use Groups	
5.0.0.		FRESHWATER MANAGEMENT UNIT SPECIFIC RECOMMENDATIONS	
5.1.1.		Recommendation: General	
	i	Regional and district councils' work programmes implement the Orari River Catchment Management Strategy 2008.	Other
	ii	Regional and district councils shall implement the Regional Pest Management Strategy to control invasive tree species	Other
5.1.2.		Recommendation: Additional Pathways for Achieving Water Quality Outcomes in the Rangitata Orton Hot Spot Area	
	iii	In addition to clauses (I) and (II), regional council should continue to support non-statutory measures for nitrogen reductions beyond Baseline GMP Loss Rates in order to achieve water quality outcomes before the target date specified in Table 3.	Support
	iv	To track progress towards achieving the water quality targets set out in Table 3, the regional council shall monitor and report on water quality and report the progress towards achieving the targets within 5 years of the OTOP sub-region plan change becoming operative, and subsequently at 5 yearly intervals, to evaluate the efficiency and effectiveness of measures being taken to achieve water quality outcomes.	Science
	v	Where this monitoring and review demonstrates that the water quality targets are likely or unlikely to be met prior to 2040, this information shall inform future plan changes for the OTOP zone to adjust the percentage reductions beyond Baseline GMP Loss Rates required to achieve the water quality targets.	Science

5.1.3.		Recommendations: Orari Environmental Flow and Allocation Regime	
5.2.0.		TEMUKA FRESHWATER MANAGEMENT UNIT	
5.2.1.		Recommendations: Further Water Quality Outcomes for the Temuka Catchment	
	i	That the Temuka River is a priority area for improving water quality in acknowledgement of its cultural significance.	Other
	ii	Non-statutory mitigations, particularly in respect of sediment, <i>E. coli</i> , and phosphorous to be prioritised for the Temuka Catchment.	Other
5.2.2.		Recommendation: Environmental Flow and Allocation Regimes in the Temuka Catchment	
	ix	An environmental flow and allocation regime be investigated and considered for the Taumatakahu Stream in consultation with Papatipu Rūnanga and consent holders for the forthcoming OTOP sub region plan change.	Science
		Note 1: The Zone Committee did not reach consensus on this recommendation as the outcome does not address the concerns of Te Rūnanga o Arowhenua.	
		Note 2: The Zone Committee agreed to adopt the following recommendation, but to note that some Zone Committee members stated this recommendation does not go far and/or fast enough in order to give effect to all first order priorities contained in the Canterbury Water Management Strategy.	
5.3.0.		OPIHI FRESHWATER MANAGEMENT UNIT	
5.3.1.		Recommendation: Augmentation of the Opuha and Opihi Rivers	
5.3.2.		Recommendation: Environmental Flow and Allocation Regimes for the Opihi Catchment	
5.3.3.		Recommendations: Water Quality Outcomes for Lake Opuha	
5.3.4.		Recommendations: Additional Pathways for Meeting Water Quality Limits in the Fiarlie Basin Nitrate Hot Spot Area	
	ii	In addition to clause (I), regional council should continue to support non-statutory measures for nitrogen reductions beyond Baseline GMP Loss Rates in order to achieve the target before the date specified in Table 20.	Support
	iii	To track progress towards achieving the water quality target set out in Table 20, the regional council shall monitor and report on water quality and report the progress towards achieving the target within 5 years of the OTOP sub-region plan change becoming operative.	Science
5.4.0.		TIMARU FRESHWATER MANAGEMENT UNIT	
5.4.1.		Recommendations: Water Quality Outcomes for the Timaru FMU	
	ii	Stormwater management plan to address further requirement to meet 95% species protection by 2035 for any new discharges of stormwater.	Other
5.4.3.		Recommendations: Additional Pathways for Meeting Water Quality Limits in the Levels Plains Hot Spot Area	
	iii	In addition to clauses (I) and (II), regional council should continue to support non-statutory measures for nitrogen reductions beyond Baseline GMP Loss Rates in order to achieve water quality outcomes before the target dates specified in Tables 21 and 22.	Support

	iv	To track progress towards achieving the water quality targets set out in Tables 21 and 22, the regional council shall monitor and report on water quality and report the progress towards achieving the targets within 5 years of the OTOP sub-region plan change becoming operative, and subsequently at 5 yearly intervals, to evaluate the efficiency and effectiveness of measures being taken to achieve water quality outcomes.	Science
5.4.4.		Recommendations: Non-Statutory	
	i	Regional and district councils adopt and implement the Action Plan developed by the Waitarakao/Washdyke Taskforce, which includes the following:	Work together
	a.	Development of sustainable drain management extension;	
	b.	Industrial and agricultural GMP extension;	
	c.	Biodiversity enhancement actions;	
	d.	Recreational access improvements, including cycle/walkway;	
	e.	Investigate feasibility of constructed wetlands.	
5.4.5.		Recommendations: Water Quantity	
5.4.6.		Recommendations: Non Statutory	
	i	Local authorities investigate establishment of a River Rating District for the Otupua/Saltwater Creek catchment.	Funding
	ii	Regional and district council support the establishment of an Otupua/Saltwater Creek Catchment Group.	Support
	iii	Regional and district council investigate stream health and flow rates to provide baseline data to inform future decision-making.	Science
	iv	Regional council support Timaru Rowing Club to investigate cost and benefit of silt excavation from lower reaches.	Science
	v	Regional council conduct a feasibility study and costing of weir modification to increase water level and improve fish passage.	Science
	vi	Regional council monitor water level below weir for comparison with above-weir data.	Science
	vii	Regional council investigate catchment inflows and abstractions.	Science
	viii	Regional council assess coastal erosion processes to inform decision-making.	Science
5.4.7.		Recommendations: Water Quantity and Quality	
	i	Regional council and industry investigate opportunities to protect and enhance cultural, amenity and biodiversity values.	Work together
5.5.0.		PAREORA FRESHWATER MANAGEMENT UNIT	
5.5.1.		Recommendations: Environment Flow Regime and Allocation Regime	

7.4 Otipua Saltwater Creek Catchment Annual Report

Author: Brian Reeve, Zone Delivery Lead

Authoriser:

Recommendation

That the OTOZ zone committee;

1. **Notes** the report
2. **Confirms** its interest in pursuing ZIPA recommendations in this urban and rural catchment for 2020-2021, with strategic long-term aim of improving water quality, enhancing biodiversity and supporting varied community uses.

Purpose of Report

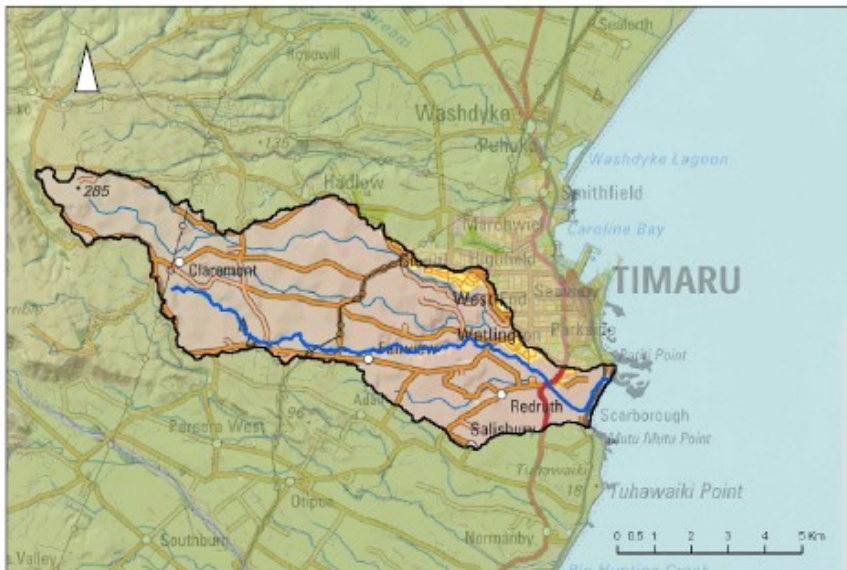
- 1 To provide the OTOZ zone committee with an update on this Catchment Group's activity supported by ECan and TDC staff, facilitated by Rhys Taylor rhys.taylor@ecan.govt.nz

Otipua Saltwater Creek Catchment, Timaru.

Annual report 2019-2020 and proposed action 2020-2021

Background:

This informal **catchment group** has been formed to bring together both urban and rural parties interested in the care and restoration of this lowland rain-fed catchment, which reaches the sea just South of Timaru. It remains open to additional members. The Otipua catchment includes an urbanised area on the South and West fringe of Timaru plus farms and lifestyle block properties along several roads heading gently uphill inland 15km to farms at Mt.Horrible (including Fairview, Landsborough, Claremont, Barton, Brockley, Rocky Hundreds roads. See map.)



During 2016-2018, initiated by OTO Water Zone Committee, a working group was convened linking staff of Timaru District Council, Environment Canterbury, Department of Conservation and various non-government organisations. A desk-research report to the Zone Committee resulted in several recommendations being adopted in the ZIPA. ECan has funded a part-time contractor to facilitate a catchment project, for about one day a week. This forms a part of the urban and rural catchments priority project for ECan's Southern team, led by Chris Eccleston and Brian Reeves.

Progress in 2019-2020 year	Proposed action in 2020-2021
<p><i>Towards reduction in summer water abstraction from the Creek:</i></p> <p>GlenWillow farm (S & A Weir) have at considerable expense completed bores down to groundwater, to identify a more reliable source of summer irrigation. Consents were obtained from ECan.</p>	<p>When affordable to the farm, bore water will replace their surface water take, consent for which will then be surrendered. At earliest, this would be completed during this or next financial year.</p>
<p><i>Towards maintaining higher water levels in summer to assist rowing use above weir and below SH1 bridge, where water sometimes too shallow:</i></p> <p>an engineering study was budgeted in 2019-2020, commissioned from R. Hall and colleagues, to model the effect on water flows of an altered weir design and make preliminary estimate of construction cost. Study incomplete, as yet to consider ecological effects and fish passage. Raising overall weir height not compatible with flood prevention.</p>	<p>Review this research study, consider ecological impacts on inward salty flows and outward fresh flows, propose a fish passage design if alternative to the current slotted timbers within the Weir centre is required. Group may advocate for capital investment within ECan and TDC Long term Plans.</p> <p>Investigate scope for river mouth opening at key times to assist fish migration.</p> <p>The Rowing Cub may also find it necessary to remove accumulated silt from the 1.5km river reach between the weir and SH1 bridge, to gain reliable depth, which will require consent from ECan and fundraising for a considerable budget for machinery hire and silt removal, as it is not a River Engineering priority.</p>

Progress in 2019-2020 year	Proposed action in 2020-2021
<p><i>Towards better understanding of industrial impacts on stormwater quality:</i></p> <p>a young graduate was employed for a month to make a roadside visual survey of industrial premises in Redruth and also near Coonoor Road. Their report has been shared with relevant TDC and ECan staff: it lists business name and activity, building roof type and area, yard type and area, and correlating this with any existing information on stormwater and trade water discharges or possible site hazards. This is preparatory to on-site visits to firms.</p>	<p>Next step in the study to be visits by ECan and TDC compliance monitoring staff to those premises and yards which the preliminary survey suggests have 'potential to pollute stormwater', offering advice to mitigate water impacts and guidance on whether discharge consent application will be required. (Similar work is under-way already in Washdyke industrial area)</p> <p>A one-sheet business information publication is required before staff visits begin. This work is relevant to the District Council application to ECan for global stormwater discharge consent.</p> <p>TDC may be able to run the MEDUSA pollution computer model on data about yard and roof areas/surface types, to estimate cumulative pollution impacts.</p> <p>Comment from Incident Response Officers Ray Hermens and Michael Nolan: "look forward to contributing to this project through conducting visits to the sites identified by the report as having potential risk of impact on Saltwater Creek. These site visits will deliver on the outcomes relating to community education of stormwater impacts on the creek, while also developing a long-term Compliance Monitoring and Enforcement presence in this area. Learnings from these site visits can also be shared to further help deliver with the publicity/education outcomes listed."</p>
<p><i>Towards protecting stormwater quality – through household education:</i></p> <p>A joint ECan - TDC activity in the year began installing road stormwater grate/sump labelling with robust blue fish symbols, on roads feeding this catchment, indicating 'drains only rain'. School student volunteers have assisted Rhys and Uki Dele with installation.</p>	<p>The stormwater education competition 'The Timaru Blue Fish Hunt' ran in July 2020, generating social media interest. ECan financed two prizes. Follow up includes encouraging volunteer groups from schools and community to install 50 more blue fish on other locations: using links made via Catchment Group participants. TDC has provided instruction booklet and loan kit of equipment.</p>

<p>A competition for school children was designed to follow (poster, and published on Courier TDC page), but launch delayed from May by the Pandemic.</p>	<p>A second TDC led household education activity this year may focus on car washing, to encourage commercial car wash use and discourage on-street car washing using detergent.</p>
<p>Progress in 2019-2020 year</p>	<p>Proposed action in 2020-2021</p>
<p><i>Towards reducing nitrogen impact of the TDC Redruth landfill on stormwater:</i></p> <p>a project led by the District Council has installed a ‘denitrification wall’ to help clean ammonia from outflows. Impact is being monitored by water testing. In addition, sediment samples have been analysed by TDC from Leckie Street drain, showing high levels of zinc (perhaps off galvanised roofs or from industrial processes?)</p>	<p>Increased frequency of water quality sampling in the lower lagoon, below the Weir. Of particular interest is potential toxicity to migrating fish of pollution in the lagoon. Eels appear to be present.</p> <p>This work is relevant to the District Council application to ECan for global stormwater discharge consent. TDC likely to keep under review, to consider further remediation?</p>
<p><i>Seeking better understanding of the differences or similarities in pollution loads in different Creek tributaries:</i></p> <p>investigations at four accessible sites on tributary streams have allowed a start on a water quality database. This is a citizen science project assisted by the charity Water Watch, which is grant aided by the Mid and South Canterbury Community Trust. Volunteers from catchment group are involved. Early findings show relatively high turbidity, nitrogen and phosphorous levels, and relatively low levels of E-coli indicator bacteria, heavy metals and hydrocarbons.</p>	<p>Continue these investigations on a more regular schedule by volunteers using Water Watch portable laboratory equipment plus professional laboratory analysis of samples when appropriate (Budget allocation made for lab expenses). ECan has also increased frequency of water quality monitoring at SH1 Creek Bridge sampling point from quarterly to monthly.</p> <p>Make recommendations by year-end on priorities for improvement in water quality in each of the tributaries being investigated. As silt transport after rain is significant, silt sources from adjacent land (other than past accumulation on the river bed) will be of interest. Stream walks may be useful in this - with landowner permission.</p>
<p><i>Investigating winter grazing practices on farmland in this catchment:</i></p> <p>Roadside observations began in June 2020, led by ECan.</p>	<p>Follow up roadside inspections by Jessica Bond and Rhys in July and August showed that most of the brassica grazing for sheep, deer and cattle was being well-managed, and following industry recommended practices of grazing in contour strips, working down slope to allow a buffer of remaining</p>

	<p>vegetation to protect 'hot spot' hollows where rain and silt would accumulate. Rainfall this winter has been low through to late August, which reduced the risk of pugging or silt wash down slopes and reduced the risk represented by grazing forage crops sown across hollows.</p> <p>Continue supporting the farming industry in their promotion of good management practices and extend this education, via field events (see below) to the owners of small blocks who may lease-out paddocks for grazing. Assistance sought from land management advisors at ECan plus industry contacts. Aim to influence Farm Environment Plans where used.</p> <p>Stream walks may be useful - with landowner permission.</p> <p>Biodiversity/LMA Officer Janine Roux comments: "if an additional hand is needed, I am happy to help with the small block event; come along on a stream walk or two; and at the BioBlitz."</p> <p>Explore scope for silt retention actions at an arable farm in the upper Otipua catchment, as a potential demonstration site on tackling silt 'hot spots'. Input offered from team members Jessica Bond and Kennedy Lange. Budget allocation for contribution to site works and/or planting.</p>
--	---

<p><i>Promoting riparian planting along waterways:</i></p> <p>to provide additional surface silt trap and nutrient filtration on flows from paddocks. Content of a Landcare Trust/Dairy NZ leaflet from 2015 was updated for South Canterbury, with new case study photos, extra species and nurseries list.</p> <p>Liaison begun with visitor accommodation providers. Opportunity explored to add a South Canterbury section to Kaikoura's Trees for Travellers website, but was paused once Covid-19 Pandemic arrived, as it stopped inbound tourism.</p>	<p>ECan distribution of the new edition in print and PDF, having sought Dairy NZ endorsement (September 2020). Budget allocation \$500</p> <p>Use at educational events for small block and farm owners. Include biodiversity values as well as stock shelter/shade, silt trapping values.</p> <p>Further investigate, with Aoraki Tourism, a South Canterbury tourist voluntary donation scheme to help finance native plantings on local coast and waterways; liaise with plant nurseries, maraes and schools to help implement. Budget allocation for communications.</p>
--	--

Attachments

Nil

7.5 ECan Zone Delivery Update

Author: Brian Reeves, Zone Delivery Lead

Authoriser:

Recommendation

That the report be received and noted.

Purpose of Report

- 1 To provide the OTOP zone committee with Work Programme Progress for Quarter (April-Jun).

Discussion

Orari Temuka Opihi Pareora Work Programme Summary:

Several work programmes across the organization have been affected by Covid 19 as the bulk of work programmes require on site visits. Nevertheless, desktop monitoring continued, particularly in relation to water data and daily alerts. Significant progress has been made across the Saltwater Creek and Washdyke lagoon projects with good community engagement. Environment Canterbury have continued to support Catchment Groups across the Zone, and this, along with collaborative activities with agricultural industry and local stake holders has further enhanced farming at Good Management Practice across the Zone.

Effective Fish screens remain a priority to Environment Canterbury with a dedicated team focusing on adherence to a strict compliance regime along with working closely with Industry to ensure compliance.

There have been a number of staff changes within the OTOP area with two new Land Management Advisors covering maternity leave. Incident response officers continue to be busy with rubbish dumping in our rivers and streams despite extensive media coverage.

Regionally Significant consents requiring a monitoring plan are in place and continue to be a primary focus for Resource Management Officers.

Our new Southern Pou Mātai Kō (Cultural Land Management) role has been recruited with Rosemary Clucas taking an active role in developing how best to ensure the protection of our local Rock Art sites (South Canterbury has around 70% of the South Island's mapped Rock Art sites), and also, working in conjunction with our Land Management Advisory team, in developing Mahinga Kai awareness across the zone.

OTOP-O-100 - Long tailed bats		
Long tailed bat working group established and operating effectively (Group includes, ECan, DOC, LINZ, TDC and landowners)	On Schedule	<p>Achievements:</p> <p>Environment Canterbury continue to actively contribute to the effective operation of the South Canterbury Bat Working Group. Including the Management of the Raincliff and Kakahu predator control operations. - Advocacy through media, public events and working with landowners and groups. - Identification of bat roosting habitat in conjunction with DOC for protection and mitigation. - Surveying for new colonies of bats. Contributing to bringing an awareness to the rural community who may have an impact by virtue of property location in proximity of bat habitats.</p>
All known bat habitats are legally and physically protected	Completed	<p>Achievements:</p> <p>The protection of bat roosting trees had been included in the drafting stage of the District Plan preview. This includes a geographic area and rules to protect roosting trees. The reviewed District Plan is likely to be notified in mid to late 2020, so this project is complete for now with a watching brief for developments.</p>
OTOP-O-101 - Safe drinking water		
Robust water quality monitoring and reporting regimes are developed and supported by targeted sampling to meet the drinking water standards.	On Schedule	<p>Achievements:</p> <p>Our regional State of the Environment water quality monitoring program was reviewed in 2014 to ensure we met community and statutory obligations. This review ensured we had reasonable representation of sites in each of the zones, across different river types and across differing levels of impactedness. These sites are monitored monthly, and the results of this monitoring available at LAWA.org.nz. We also have a program for our ecosystem health monitoring (Stream habitat and invertebrate community) that covers a number of sites in the OTOPE zone. Again, these results are available on LAWA, as are the results from our summer Contact Recreation water quality monitoring programme.</p>
OTOP-O-102 - Compliance		
All incident response / daily alert matters are responded to in a timely way.	On Schedule	<p>Achievements:</p> <p>During Covid 19 outbreak consent monitoring had been limited to processing water data. This included verification as well as data gaps, midseason data as well as low flow restrictions. Events were triaged and any follow-up events dealt with upon the relaxing of quarantine.</p> <p>Checked PowerBi M hours on a weekly basis as part of regular One on Ones with Resource Management Officers and Incident Response Officers. Regular monitoring of Action plans, Monitoring hours, pollution events. This activity is also part of staff KPIs.</p>

		<p>All daily alerts relating to a breach of Resource Consent water permits are dealt with in accordance with agreed upon Risk matrix. All Incidents are prioritized and afforded due resource. All Activity tabs updated.</p> <p>Activity is reviewed with the Zone team Resource Management Officers and Incident Response Officers on at least a monthly basis.</p> <p>Regional and OTOP Compliance Report delivered to OTOP Zone Committee.</p> <p>Development of Standard Operating procedures including health and safety protocols. 32 Fish screens inspected in pilot. 20 of the top 50 have been visited and compliance assessments made. 10 new screens have been submitted for design review. Compliance assessment have dropped from approx. 80 staff hours to about 10 hours per inspection. Roles involving fish screens are for specific staff who have undergone appropriate training. Resource management officers have been identified throughout the region to undergo specific training with respect to fish screen monitoring.</p> <p>Activities undertaken by Incident response staff have been wide and varied. There has been a prevalence of rubbish tipping in riverbeds and laybys, this has prompted wide media coverage to highlight this issue. Officers have been involved in an Interagency Outdoor programme based on an educative approach to farmers utilising Fire Emergency NZ, FAR as well as Federated Farmers.</p>
.	On Schedule	
OTOP-O-95 - Farming at GMP or Better		
<p>Extension and support programme developed and implemented for farmers within the OTOP zone. Programme updated annually.</p>	On Schedule	<p>Achievements:</p> <p>Two farm visits in the OTOP zone completed to assist with farm management practices. One was a follow up after an initial Farm Environment Plan audit fail.</p> <p>Blue Fish rainwater drains competition being readied for start in July. Communications team working on poster/ social media material. Designed to encourage school participation in potential stormwater issues.</p> <p>Temporary student survey assistant Lily Hall employed throughout June- field work completed at Redruth</p>

		and Coonoor Rd industrial sites. Report drafted - will share with Resource management Officers and Timaru District Council colleagues.
Catchment groups in the OTOP zone that are working to address catchment-specific issues are supported by regional council and industry	On Schedule	Achievements: Discussed at Zone Committee meeting in March. - feedback from group members present that farmers, after an intensive period of consultation, are awaiting Hearings on PC7 (May 2020?) and reluctant to meet much until then. Corroborated by low level of response to emails from members of groups that are supported and by views of facilitators of other groups in South Canty. Awaiting resumption of Zone Committee meetings to reset and reignite interest in catchment groups.
Landholder mahinga kai awareness, understanding, extension and support programme developed and implemented. Programme updated annually	Behind Schedule	Achievements: Washdyke working group has been reconvened to re-engage with relevant stakeholders. Funding opportunities may develop once programme progresses. interagency alignment and agreement to report back on action plans prior to September meeting. Progress on Zone Delivery understanding of the 'sig indigenous biodiversity to implement Mahinga kai in the Waitaki and OTOP area. Contributing to each Farm Environment Plan and to streamlining internal work process within team and between teams. . Commentary received from Runanga as well as Timaru District Council Stormwater engineer to aid in agreed upon programme brief. Progress delayed somewhat due to Covid 19 lock down.

All landowners who require a land use consent for their property because of PC5 provisions, have applied and received their consent	On Schedule	Achievements: Majority of campaign recipients have made contact and are waiting on industry for Baselines. Formal warning letters sent out end of October to remaining farmers in campaign numbering approx. 20. Numbers from 31 December 2019 Land Use Consents granted by October - 156 Land Use Consents applications in progress- 36 Three FEP check completed for OTOP, one in Lower Waitaki. Introductory meeting held with Opuha Water Ltd and Rangitata South Irrigation following employment of new LMAs
---	-------------	---

		<p>and RMO to improve industry relationship and work on improving FEPs and audit follow-ups with their stakeholders.</p> <p>Land management advisors have been involved in a short-notice funding opportunity from Government.</p> <p>Regional Land Management team are working towards Campaign launch in July. Communications being included in print and radio media advertising were shared with Land Management Advisors. Letters still being drafted to go out to farms - Regional team aiming for end of July. Further follow-up will then be needed from OTOP Land Management Advisors. Discussing the options of running three workshops in OTOP zone to compliment campaign.</p>
<p>OTOP-O-96 - Improving recreational and amenity values</p>		
<p>Swimming site and recreational access improvement plans developed and implemented for the swimming sites throughout the OTOP zone, as listed in Schedule 6 of the LWRP.</p>	<p>Behind Schedule</p>	<p>Achievements: Land, Air, Water Aotearoa (LAWA) has been established by like-minded organizations with a view to helping local communities find the balance between using natural resources and maintaining their quality and availability. LAWA connects us with the environment by sharing environmental data and information. Project on hold due to resources.</p>
<p>Comprehensive monitoring programmes in place for all regionally and locally significant consents.</p>	<p>On Schedule</p>	<p>Achievements: Undertaken planned monitoring activities with identified consents. Identified by risk matrix incorporating economy of scale, compliance history, environment. Focus to be on high risk rated consents. Regionally Significant Consents have been identified and agreed monitoring plans are in place.</p>
<p>OTOP-O-100 - Long tailed bats</p>		
<p>Long tailed bat working group established and operating effectively (Group includes, ECan, DOC, LINZ, TDC and landowners)</p>	<p>On Schedule</p>	<p>Achievements: Environment Canterbury continue to actively contribute to the effective operation of the South Canterbury Bat Working Group. Including the Management of the Raincliff and Kakahu predator control operations. - Advocacy through media, public events and working with landowners and groups. - Identification of bat roosting habitat in conjunction with DOC for protection and mitigation. - Surveying for new colonies of bats. Contributing to bringing an awareness to the rural community who may have an impact by virtue of property location in proximity of bat habitats.</p>

<p>All known bat habitats are legally and physically protected</p>	<p>Completed</p>	<p>Achievements: The protection of bat roosting trees had been included in the drafting stage of the District Plan preview. This includes a geographic area and rules to protect roosting trees. The reviewed District Plan is likely to be notified in mid to late 2020, so this project is complete for now with a watching brief for developments.</p>
<p>OTOP-O-101 - Safe drinking water</p>		
<p>Robust water quality monitoring and reporting regimes are developed and supported by targeted sampling to meet the drinking water standards.</p>	<p>On Schedule</p>	<p>Achievements: Our regional State of the Environment water quality monitoring program was reviewed in 2014 to ensure we met community and statutory obligations. This review ensured we had reasonable representation of sites in each of the zones, across different river types and across differing levels of impactedness. These sites are monitored monthly, and the results of this monitoring available at LAWA.org.nz. We also have a program for our ecosystem health monitoring (Stream habitat and invertebrate community) that covers a number of sites in the OTOPE zone. Again, these results are available on LAWA, as are the results from our summer Contact Recreation water quality monitoring programme.</p>
<p>OTOP-O-102 - Compliance</p>		
<p>All incident response / daily alert matters are responded to in a timely way.</p>	<p>On Schedule</p>	<p>Achievements: During Covid 19 outbreak consent monitoring had been limited to processing water data. This included verification as well as data gaps, midseason data as well as low flow restrictions. Events were triaged and any follow-up events dealt with upon the relaxing of quarantine. Checked PowerBi M hours on a weekly basis as part of regular One on Ones with Resource Management Officers and Incident Response Officers. Regular monitoring of Action plans, Monitoring hours, pollution events. This activity is also part of staff KPIs. All daily alerts relating to a breach of Resource Consent water permits are dealt with in accordance with agreed upon Risk matrix. All Incidents are prioritized and afforded due resource. All Activity tabs updated. Activity is reviewed with the Zone team Resource Management Officers and Incident Response Officers on at least a monthly basis. Regional and OTOPE Compliance Report delivered to OTOPE Zone Committee. Development of Standard Operating procedures</p>

		<p>including health and safety protocols. 32 Fish screens inspected in pilot. 20 of the top 50 have been visited and compliance assessments made. 10 new screens have been submitted for design review. Compliance assessment have dropped from approx. 80 staff hours to about 10 hours per inspection. Roles involving fish screens are for specific staff who have undergo appropriate training. Resource management officers have been identified throughout the region to undergo specific training with respect to fish screen monitoring.</p> <p>Activities undertaken by Incident response staff have been wide and varied. There has been a prevalence of rubbish tipping in riverbeds and laybys, this has prompted wide media coverage to highlight this issue. Officers have been involved in an Interagency Outdoor programme based on an educative approach to farmers utilizing Fire Emergency NZ, FAR as well as Federated Farmers.</p>
	<p>On Schedule</p>	
<p>OTOP-O-95 - Farming at GMP or Better</p>		
<p>Extension and support programme developed and implemented for farmers within the OTOB zone. Programme updated annually.</p>	<p>On Schedule</p>	<p>Achievements:</p> <p>Two farm visits in the OTOB zone completed to assist with farm management practices. One was a follow up after an initial Farm Environment Plan audit fail.</p> <p>Blue Fish rainwater drains competition being readied for start in July. Communications team working on poster/ social media material. Designed to encourage school participation in potential stormwater issues.</p> <p>Temporary student survey assistant Lily Hall employed throughout June- field work completed at Redruth and Coonor Rd industrial sites. Report drafted - will share with Resource management Officers and Timaru District Council colleagues.</p>
<p>Catchment groups in the OTOB zone that are working to address catchment-specific issues are supported by regional council and industry</p>	<p>On Schedule</p>	<p>Achievements:</p> <p>Discussed at Zone Committee meeting in March. - feedback from group members present that farmers, after an intensive period of consultation, are awaiting Hearings on PC7 (May 2020?) and reluctant to meet much until then. Corroborated by low level of response to emails from members of groups that are supported and by views of facilitators of other groups in South Canty. Awaiting resumption of Zone Committee</p>

		meetings to reset and reignite interest in catchment groups.
Landholder mahinga kai awareness, understanding, extension and support programme developed and implemented. Programme updated annually	Behind Schedule	<p>Achievements:</p> <p>Washdyke working group has been reconvened to re-engage with relevant stakeholders. Funding opportunities may develop once programme progresses. interagency alignment and agreement to report back on action plans prior to September meeting.</p> <p>Progress on Zone Delivery understanding of the 'sig indigenous biodiversity to implement Mahinga kai in the Waitaki and OTOP area. Contributing to each Farm Environment Plan and to streamlining internal work process within team and between teams. .</p> <p>Commentary received from Runanga as well as Timaru District Council Stormwater engineer to aid in agreed upon programme brief.</p> <p>Progress delayed somewhat due to Covid 19 lock down.</p>
All landowners who require a land use consent for their property because of PC5 provisions, have applied and received their consent	On Schedule	<p>Achievements:</p> <p>Majority of campaign recipients have made contact and are waiting on industry for Baselines. Formal warning letters sent out end of October to remaining farmers in campaign numbering approx. 20.</p> <p>Numbers from 31 December 2019 Land Use Consents granted by October - 156 Land Use Consents applications in progress- 36</p> <p>Three FEP check completed for OTOP, one in Lower Waitaki. Introductory meeting held with Opuha Water Ltd and Rangitata South Irrigation following employment of new LMAs and RMO to improve industry relationship and work on improving FEPs and audit follow-ups with their stakeholders.</p> <p>Land management advisors have been involved in a short-notice funding opportunity from Government.</p> <p>Regional Land Management team are working towards Campaign launch in July. Communications being included in print and radio media advertising were shared with Land Management Advisors. Letters still being drafted to go out to farms - Regional team aiming for end of July. Further follow-up will then be needed from OTOP Land Management Advisors. Discussing the options of running three workshops in</p>

		OTOP zone to compliment campaign.
OTOP-O-96 - Improving recreational and amenity values		
Swimming site and recreational access improvement plans developed and implemented for the swimming sites throughout the OTOP zone, as listed in Schedule 6 of the LWRP.	Behind Schedule	Achievements: Land, Air, Water Aotearoa (LAWA) has been established by like-minded organizations with a view to helping local communities find the balance between using natural resources and maintaining their quality and availability. LAWA connects us with the environment by sharing environmental data and information. Project on hold due to resources.
Comprehensive monitoring programmes in place for all regionally and locally significant consents.	On Schedule	Achievements: Undertaken planned monitoring activities with identified consents. Identified by risk matrix incorporating economy of scale, compliance history, environment. Focus to be on high risk rated consents. Regionally Significant Consents have been identified and agreed monitoring plans are in place.
OTOP-O-97 - Focus on wetlands, spring and hill-fed streams, and coastal lagoons		
Comprehensive programme in place to ensure programmes for the protections of wetlands and springheads are included in FEPs	On Schedule	Achievements: General GMP queries regarding land use consent to farm, FEPs, biodiversity immediate steps funding. Other employees visited the following farms: 1x Coastal Property giant kokopu fished. 1x visit Bat habitat, Taiko Stream with regional biodiversity advisor visit for actions next year.
Water quality, biodiversity and cultural values are improved in Waitarakao/Washdyke lagoon	On Schedule	Achievements: Work progressing on Washdyke lagoon project with work undertaken to finalise scope of work and participants. Once this has been finalised then the financials will become more apparent. Specific Biodiversity plans are in place to enhance biodiversity and cultural values.
Water quality, biodiversity and cultural values are improved in the Saltwater Creek catchment.	On Schedule	Achievements: Significant progress and activity has occurred in relation to the Saltwater Creek focus project. There was a Beef + Lamb NZ Freshwater Workshop 28th March in the Saltwater Creek/ Pareora catchment, which explained the uses of the Stream Health Monitoring and Assessment Kit (SHMAK), which Environment Canterbury had purchased for future use in Saltwater Creek catchment. Training in its use, and a trail run of its use was There was an arable farm visit in Saltwater Catchment on 23rd May where the Foundation for Arable Research Farm Environment Plan was discussed with the farmer. A further visit is

		<p>planned regarding potential sediment traps. In the Saltwater Creek Catchment, there was a Catchment Group meeting held Wednesday 1st May at Timaru Boys High School; a guest speaker from Timaru District Council discussed their storm water management plan progress. A native planting session was held on 24th May on road-side swale close to Saltwater Creek mouth, near the new Eco Centre site, in collaboration with Timaru District Council staff, and who also provided the plants. Following this there has been interest expressed by volunteers in creating a native tree nursery to supply community coastal and riparian projects. A dairy farm from in the Saltwater Creek catchment was visited by guests after South Canterbury Catchment Groups event hosted by Landcare Trust & ECan on 18 June. The farmer announced their intention to swap from Creek surface water for dairy farm irrigation, to deep groundwater, which supports one of the Saltwater Creeks projects aims. Five water monitoring sites on tributaries have been identified for seasonal visits and samples taken at three for Hills lab analysis. (Chris Konings of Water Watch assisting). Volunteer training session planned 15 August.</p>
<p>OTOP-O-98 - Culturally significant rock art sites</p>		
<p>Comprehensive monitoring programmes in place for all regionally and locally significant consents.</p>	<p>On Schedule</p>	<p>Achievements:</p> <p>To undertake planned monitoring activities with identified consents. Identified by risk matrix incorporating economy of scale, compliance history, environment. Focus to be on high risk rated consents.</p> <p>One rock art site has been identified within a Farm Environment Plan. The Farm Environment Plan did not include the site nor many other schedule 7 management areas. Work has been initiated in working with Tuia/Runaka/AEC and the Land management Advisers section. Good management Practice is needed and will be developed between parties. Issues are being identified and conversations are being progressed.</p>
<p>OTOP-O-99 - Biodiversity step change</p>		
<p>Annual allocation of Biodiversity Strategy and Immediate Steps funding is prioritized.</p>	<p>On Schedule</p>	<p>Achievements:</p> <p>Site visit with Kennedy Lange to a Craigmere farm on Pareora River Road. Advice given on riparian planting, GMP and wetland restoration. Site visit to previous IMS funded sites to monitor impact on Biodiversity - Old Orari Lagoon and Connells wetland enhancement. Update on OTOP IMS projects 2018/2019 Upper</p>

		<p>Rangitata Predator Control - this year's trapping has been completed. Papaka Stream planting - completed Bishops wetland - completed Black birch QEII covenant fencing stage 2 - completed Ellis Road wetland - Planting scheduled for this coming spring. Milford lagoon Southbank - Project ongoing, weed control scheduled to be finished this coming spring. Maze Pastures - completed Old Orari Lagoon - completed Geraldine downs - completed Tengawai Bat Habitat - completed Project Peel – completed. General GMP queries regarding land use consent to farm, FEPs, biodiversity immediate steps funding. • Other employees visited the following farms: 1x Coastal Property giant kokopu fished. 1x visit Bat habitat, Taiko Stream with regional biodiversity advisor visit for actions next year. • Induction Janine Rob's replacement Induction for Cultural Management Advisor Rosemary Lucas.</p> <p>Of Orari Temuka Opihi Pareora's \$104k IMS budget, \$104k has been approved over 8 projects. See previous updates for project names as details.</p>
<p>Partnerships developed with organizations, including DOC, District Council, QEII, and industry groups to ensure the protection and enhancement of terrestrial and aquatic biodiversity in the zone.</p>	<p>On Schedule</p>	<p>Achievements:</p> <p>BioBlitz stage two, with focus on invertebrates, held at Otipua Wetland on 3-4 March, with several guest experts - total of 300 observations recorded at the I-Naturalist website. Will be used as an input to the TDC management plan for the site via Gary Foster. E-newsletter published for list and media coverage secured for BioBlitz.</p> <p>Work progressing on Washdyke lagoon project with work undertaken to finalize scope of work and participants. Once this has been finalized then the financials will become more apparent.</p> <p>Land, Air, Water Aotearoa (LAWA) has been established by like-minded organizations with a view to helping local communities find the balance between using natural resources and maintaining their quality and availability. LAWA connects us with the environment by sharing environmental data and information.</p>

Attachments

Nil

7.6 Facilitator's Update

Author: Lesley Woudberg, Team Leader Zone Facilitator

Authoriser:

Recommendation

That the report be received and noted.

Purpose of Report

Central Government

Action for Healthy Waterway

National Standards came into force 3 September

<https://www.mfe.govt.nz/action-for-healthy-waterways>

Freshwater Improvement Fund

1st Round open 7 September closes 21 September

2nd Round open 27 January closes 10 February

<https://www.mfe.govt.nz/more/funding/freshwater-improvement-fund>

Environment Canterbury

Government Funding

- \$15.5 million flood protection
- \$3 million wilding pines
- \$67 million over 10 years wallaby control

\$15.5 million boost to Canterbury Flood Protection Infrastructure

<https://ecan.govt.nz/get-involved/news-and-events/2020/15-5-million-boost-to-canterburys-flood-protection-infrastructure/>

Note: Rangitata flood recovery project received a boost from this funding allocation

Wilding pines project gives workers lifeline

<https://www.youtube.com/watch?v=e9afd669LJs>

New Joint project to locate hidden wallabies

<https://www.ecan.govt.nz/get-involved/news-and-events/2017/new-joint-tech-project-to-locate-hidden-wallabies/>

District Councils

3 Waters Reform

Timaru, Waimate and Mackenzie District Council/s have signed MOUs with the government to commit to the first phase of the 3 Waters Reform package.

<https://www.beehive.govt.nz/speech/speech-stormwater-conference>

Timaru District Council receives \$3.43 million

Waimate District Council receives \$1.63 million

Mackenzie District Council receives \$2.56 million

Community



Demonstration Site Field Day

Otamatakau Wetland

Friday 18 September 2020

11am to 3pm

Old Cook Shop, 2791 Otematata Station Road

Every wetland has a story and likewise every farmer has a tale to tell which is why NZ Landcare Trust are hosting a brave conversation about what managing our wetlands as farm assets looks like on 15 diversely different properties across the length and breadth of Canterbury. Hugh, Joe and Pip Cameron from Otematata Station are hosting the first in a series of field days focusing on wetland management planning, willow control techniques, biological broom control and ecological survey activities.

The aim of this three year project is to work with farmers and the wider community to provide advice and share knowledge about the range of benefits wetlands offer the farming system, the environment and the wider community.

Attachments

Nil

- 8 Consideration of Urgent Business Items**
- 9 Consideration of Minor Nature Matters**
- 10 Closing Summary and Karakia**