

**TIMARU DISTRICT COUNCIL  
HISTORIC HERITAGE ITEM RECORD FORM**

---

**HERITAGE ITEM NAME** Bluestone Bridge  
**ADDRESS** Guscott Road, Pareora West  
**PHOTOGRAPH**



**Former District Plan Item No.** NO.92      **HNZ LIST No. & CATEGORY** 1975 / 2

**LEGAL DESCRIPTION** Legal Road

**VALUATION NUMBER** xx

**DATE OF CONSTRUCTION** 1875

**ARCHITECT/DESIGNER/  
BUILDER** Levels Road Board

**STYLE** Vernacular

**PHYSICAL DESCRIPTION**

8-metre span faceted arched bridge built from coursed bluestone.

**MATERIALS/STRUCTURE**

Bluestone (basalt) & concrete.

**ADDITIONS/ALTERATIONS**

Side walls repaired in concrete and repointed (1986).

**SETTING**

The bridge spans Pig Hunting Creek on Guscott Road, south of its intersection with Holme Station Road. The extent of setting is limited to the immediate environs of the bridge and is consistent with the Heritage NZPT list entry.

## **HISTORY**

James Guscott (c.1830-1909) applied to the Levels Road Board for two bridges at the 'Pighunting-creek' in March 1874. The Levels Road Board, established in 1864, was responsible for building and maintaining bridges throughout the district. The board resolved in March 1875 to obtain tenders for Guscott's bridges, the delay caused in part by the preferred option of building two stone fords. After tenders were finally called for bridges, the successful tender of Jones, Peters and Hope was announced in July 1875. James and Mary Guscott built a stone house on their property near the bridge, which was put up for auction in January 1888 after James had been declared bankrupt. The bluestone bridge was repaired and repointed in 1986 and is still in use today.

## **HISTORICAL AND SOCIAL SIGNIFICANCE**

The Guscott Road bluestone bridge has historical significance for its association with the Guscott family, after whom the local road was named, and the Levels Road Board. The bridge represents the development of the district's transport infrastructure and the local quarry industry.

## **CULTURAL AND SPIRITUAL SIGNIFICANCE**

The Guscott Road bluestone bridge has cultural value as a demonstration of the way of life of early pastoralists who relied on bridges built by the local road board to access their farms and truck produce to market.

## **ARCHITECTURAL AND AESTHETIC SIGNIFICANCE**

The Guscott Road bluestone bridge has aesthetic value as a vernacular bridge that was designed to be fit for purpose. William Williamson was the Levels Road Board engineer in 1875.

## **TECHNOLOGICAL AND CRAFTSMANSHIP SIGNIFICANCE**

The Guscott Road bluestone bridge has technological and craftsmanship significance as a later 19<sup>th</sup> century masonry bridge, constructed from locally quarried bluestone by the Levels Road Board.

## **CONTEXTUAL SIGNIFICANCE**

The Guscott Road bluestone bridge has contextual significance as a local feature that is one of a large number of stone bridges and culverts throughout the Timaru district. The former Guscott house (heritage item # 93) is located to the south of the bridge, on the west side of Guscott's Road. A second, smaller stone bridge is at the southern end of Guscott Road, immediately adjacent to its intersection with Beaconsfield Flat Road.

## **ARCHAEOLOGICAL AND SCIENTIFIC SIGNIFICANCE**

As the bridge pre-dates 1900 its site has potential archaeological significance relating to the structure's construction and the development of pastoralism in Pareora West.

## **SUMMARY OF HERITAGE SIGNIFICANCE**

The Guscott Road bluestone bridge has overall heritage significance to Pareora West and Timaru district as a whole. The bridge has historical significance for its association with the Guscott family and the Levels Road Board and cultural value as a demonstration of the way of life of its early users. The Guscott Road bluestone bridge has aesthetic value as a utilitarian vernacular arched bridge and technical and craftsmanship significance for its masonry construction using locally quarried bluestone. The Guscott Road bluestone bridge has contextual significance as one of a large number of stone bridges and culverts in the district

and in relation to other bluestone structures in the locale. The Guscott Road bluestone bridge has potential archaeological significance in view of its pre-1900 date of construction.

## HERITAGE CATEGORY

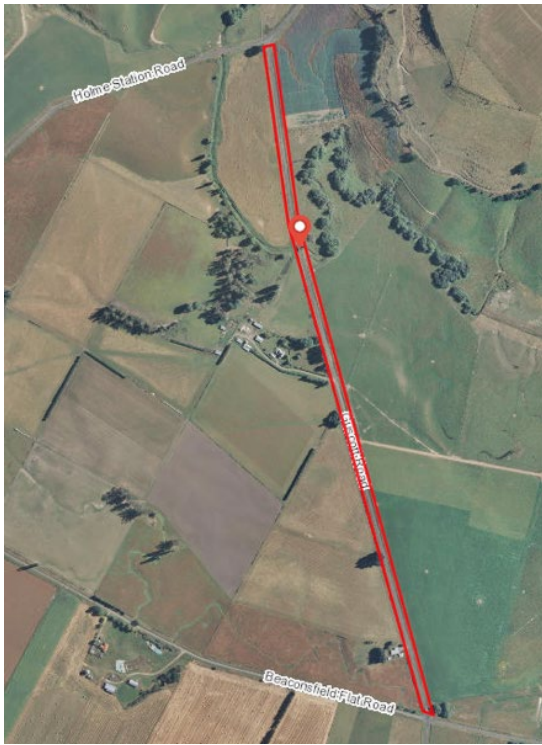
B

## REFERENCES

- *Timaru Herald* 26 November 1864, p. 4; 28 January 1865, p. 5; 22 October 1873, p. 7; 11 March 1874, p. 4; 15 April 1874, p. 4; 13 May 1874, p. 3; 10 March 1875, p. 4; 14 April 1875, p. 4; 14 July 1875, pp. 1 & 3; 6 December 1877, p. 3; 31 October 1878, p. 4.
- *South Canterbury Times* 28 January 1888, p. 3; 29 August 1888, p. 3; 15 September 1888, p. 3.
- *Press* 31 October 1878, p. 5.
- *Lyttelton Times* 23 December 1887, p. 4.
- *Wanganui Chronicle* 11 February 1909, p. 4.
- J Waugh 'Historic Stone Arch Bridges' *Historic Places* No. 47, May 1994, pp. 20-21.
- *Cyclopedia of New Zealand – Canterbury Provincial District* Christchurch, 1903; available online.
- <http://www.heritage.org.nz/the-list/details/1975>



Extent of setting, bridge over Pighunting Creek, Guscott Road, Pareora West.



Guscott Road, Pareora West with bridge site marked by pin.