

TIMARU DISTRICT COUNCIL
HISTORIC HERITAGE ITEM RECORD FORM

HERITAGE ITEM NAME former Gleniti Institute Public Library

ADDRESS 20 Gleniti Road, Gleniti, Timaru

PHOTOGRAPH



(A McEwan, July 2017)

FORMER DISTRICT PLAN ITEM NO. NO. 7 **HNZ LIST No. & CATEGORY** 2060/2
(at time of assessment)

LEGAL DESCRIPTION RS 40849

VALUATION NUMBER 2503328600B

DATE OF CONSTRUCTION 1886

**ARCHITECT/DESIGNER/
BUILDER** Unknown

STYLE Vernacular

PHYSICAL DESCRIPTION

Single-storey building with rectangular footprint and gabled roof forms. Enclosed entrance porch at north end, random rubble masonry walls with dressed quoins and window surrounds. Two-pane, double-hung sash windows. Rear wall has no quoins and a small section of brick indicating a former door opening.

MATERIALS/STRUCTURE

Bluestone and limestone, corrugated metal.

ADDITIONS/ALTERATIONS

Internal partition wall removed (1960s).

SETTING

The former library stands in the eastern corner of a large parcel on the south side of Gleniti Road; the property is bounded by Claremont Road to the south and is north-west of the intersection with Claremont and Wai-Iti Roads. The extent of scheduling includes the former Gleniti School and the immediate setting of both buildings, rather than the parcel as a whole, which includes the Gleniti Domain along the western boundary of the school setting.

HISTORY

The Gleniti Institute was established in late 1885 and it erected a public library on the site of the Gleniti School in the following year. The building was opened by the Mayor of Timaru, on 18 May 1886; ET Rhodes having paid for the library to be built from stone gifted by David Fyfe, who ran a nearby quarry. The Institute ran a lending library, of some 300 volumes, and subscribers numbered 28 by May 1887. The library's reading room stocked a variety of newspapers and journals and the Institute also held public lectures. Central government funding helped to support the running of the public library, which held over 1000 volumes by 1915 and was used in the early 20th century as a polling booth and social hall. The library committee handed over the library, its funds and contents to the Gleniti School in 1961. With a growing roll, the school used the library as a classroom for a period before a new school opened on another site in 1975. The former school site, including the library building, was transferred to the Timaru District Council and the South Canterbury Arts Society then leased the library and school building for their use. The former library is now used solely for storage.

HISTORICAL AND SOCIAL SIGNIFICANCE

The former Gleniti Institute Public Library has high historical and social significance for its association with members of the Gleniti community who formed a library institute for the benefit of local people in the mid-1880s. The building represents the autonomy of Gleniti in the 19th and early 20th centuries, before the expansion of Timaru encompassed the rural village.

CULTURAL AND SPIRITUAL SIGNIFICANCE

The former Gleniti Institute Public Library has cultural significance as a demonstration of the way of life of a rural community in the later 19th century whose members worked together to provide their own community facilities.

ARCHITECTURAL AND AESTHETIC SIGNIFICANCE

The former Gleniti Institute Public Library has architectural and aesthetic significance for its vernacular design and classical detailing in the form of quoins. The building was designed to harmonise with the neighbouring schoolroom. The plan was supplied by ET Rhodes but the designer is currently unknown.

TECHNOLOGICAL AND CRAFTSMANSHIP SIGNIFICANCE

The former Gleniti Institute Public Library has craftsmanship significance for the quality of its masonry construction and use of locally quarried stone.

CONTEXTUAL SIGNIFICANCE

The former Gleniti Institute Public Library has contextual significance as a local landmark and in conjunction with the former Gleniti School building.

ARCHAEOLOGICAL AND SCIENTIFIC SIGNIFICANCE

As the former public library pre-dates 1900 its site has potential archaeological significance.

SUMMARY OF HERITAGE SIGNIFICANCE

The former Gleniti Institute Public Library has high overall significance to Gleniti and Timaru district as a whole. The building has historical and social significance for its association with the Gleniti Institute and the settlement's provision of its own community facilities. The former Gleniti Institute Public Library has cultural significance as a demonstration of the way of life of a rural community in the late 19th century and architectural and aesthetic significance for its vernacular styling with classical overtones. The former Gleniti Institute Public Library has

craftsmanship significance for its masonry construction and detailing and contextual significance as a local landmark and in relation to the former Gleniti School building. As the building pre-dates 1900 its site has potential archaeological significance.

HERITAGE CATEGORY

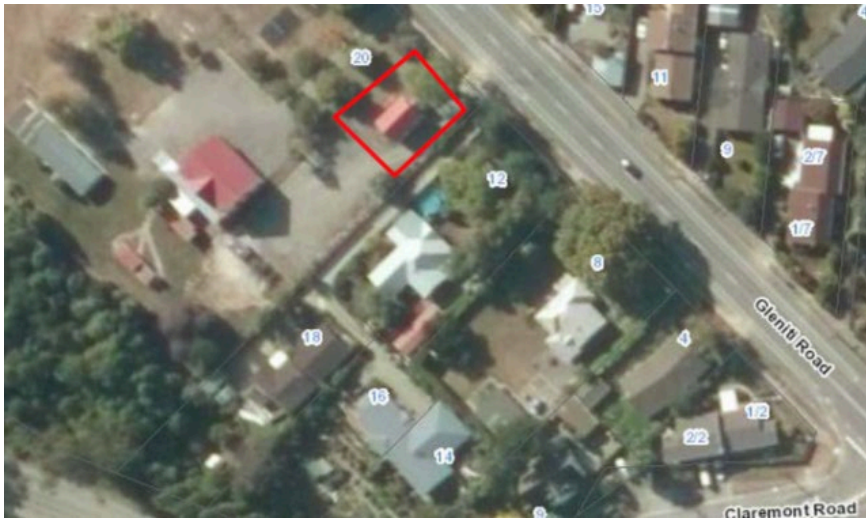
A

REFERENCES

- *Timaru Herald* 2 December 1871, p. 2; 4 January 1882, p. 4; 10 November 1885, p. 2; 4 December 1885, pp. 2, 3; 22 March 1886, p. 3; 15 May 1886, p. 2; 18 May 1886, p. 2; 3 September 1886, p. 3; 6 May 1887, p. 3; 30 September 1887, p. 3; 22 October 1887, p. 2; 31 January 1888, p. 4; 31 December 1904, p. 3; 11 July 1905, p. 4; 7 May 1915, p. 3; 11 June 1915, p. 11; 12 June 1916, p. 8; 9 July 1917, p. 4; 3 August 1917, p. 6; 7 October 1920, p. 7.
- *Temuka Leader* 4 September 1886, p. 1; 28 February 1924, p. 2.
- *South Canterbury Times* 22 March 1886, p. 2; 20 May 1886, p. 3; 30 September 1887, p. 4.
- *Lyttelton Times* 18 October 1886, p. 4.
- WC Charteris *Cheerful yesterdays: a centennial history of the Gleniti (Wai-Iti) School 1879-1979* Timaru, 1979.
- <http://www.heritage.org.nz/the-list/details/2060>
- M Jenner *Small Libraries of New Zealand* Tauranga, 2005.
- <http://www.timarucivictrust.co.nz/activities/perfection-in-miniature>



Extent of scheduling, 20 Gleniti Road, Gleniti, Timaru.



For information purposes it is noted that the Heritage NZPT list entry for the former library describes the extent of listing as shown in the aerial above.