

TIMARU DISTRICT COUNCIL
HISTORIC HERITAGE ITEM RECORD FORM

HERITAGE ITEM NAME Temuka War Memorial
ADDRESS Temuka Domain, Domain Avenue, Temuka
PHOTOGRAPH



(DG McEwan, 7 January 2020)

DISTRICT PLAN ITEM NO. New **HNZ LIST No. & CATEGORY** n/a
LEGAL DESCRIPTION RS 41110
VALUATION NUMBER 2478051900
DATE OF CONSTRUCTION 1922
**ARCHITECT/DESIGNER/
BUILDER** GWJ Parsons, stonemason & contractor
STYLE Obelisk

PHYSICAL DESCRIPTION

Square section obelisk mounted on multi-part plinth stands on stepped base with square footprint. 'Roll of Honour' names arranged alphabetically; surnames followed by initials. Memorial garden framed by horseshoe shaped wall and hedging; wall bears WWII memorial tablet.

MATERIALS/STRUCTURE

Granite (obelisk), concrete (base/steps and memorial wall).

ADDITIONS/ALTERATIONS

Addition of names of servicemen who died serving in WWII; memorial wall erected (post-1945).

SETTING

The war memorial is set within a horseshoe-shaped formal garden that is bordered by a wall and hedging delineating the memorial site from the wider setting of the domain. The driveway encircling the adjacent sports field forms the north-western boundary of the memorial site. There are a number of other memorial features and notable trees within the domain, including memorial gates that commemorate local men who fought in the South African War. The setting is limited to the immediate environs of the memorial, rather than the land parcel as a whole, and includes the WWII memorial wall and commemorative plaque.

HISTORY

The fallen soldiers' monument in Temuka Domain was unveiled in Victoria Park (Temuka Domain) by the Governor-General, Lord Jellicoe, on 10 August 1922. A crowd of about 2000 people reportedly witnessed the event. Fund-raising had commenced in August 1920, the same month in which the proposed design was published in the *Timaru Herald*. After World War II the names of servicemen who had died in that conflict were added to the memorial and a semi-circular wall behind the cenotaph was also erected in their memory. The memorial remains the focus for local ANZAC Day ceremonies each year.

HISTORICAL AND SOCIAL SIGNIFICANCE

The Temuka War Memorial has historic and social significance for its association with the region's commemoration of World War I, and World War II, and the proliferation of ornamental war memorials that were erected throughout New Zealand in the 1920s. It is directly connected to the people, their families and descendants, whose names are inscribed upon the base of the memorial obelisk.

CULTURAL AND SPIRITUAL SIGNIFICANCE

The Temuka War Memorial has cultural significance as a place of community identity and historic continuity. The memorial has commemorative significance and remains the focus for local ANZAC Day commemorations.

ARCHITECTURAL AND AESTHETIC SIGNIFICANCE

The Temuka War Memorial has aesthetic value as a decorative obelisk, a type of funerary memorial that was commonly erected after World War I.

TECHNOLOGICAL AND CRAFTSMANSHIP SIGNIFICANCE

The Temuka War Memorial has craftsmanship significance for the quality of its construction and detailing. George Parsons was a leading Christchurch monumental mason whose business was established in Sydenham in 1877. Parsons also crafted the obelisk mounted atop the Winchester Fallen Soldiers' Memorial (1920) and the Cust War Memorial (1922).

CONTEXTUAL SIGNIFICANCE

The Temuka War Memorial has contextual significance as a local landmark within the environs of the Temuka Domain. The South African War memorial gates and a number of other memorials are also located in the Domain; a commemorative rata was planted in August 2016 to mark the centenary of the Temuka Returned Servicemen's' Association.

ARCHAEOLOGICAL AND SCIENTIFIC SIGNIFICANCE

As the memorial post-dates 1900, any potential archaeological significance of the site would likely relate to its earlier use and development. The domain grounds were in development by the early 1870s.

SUMMARY OF HERITAGE SIGNIFICANCE

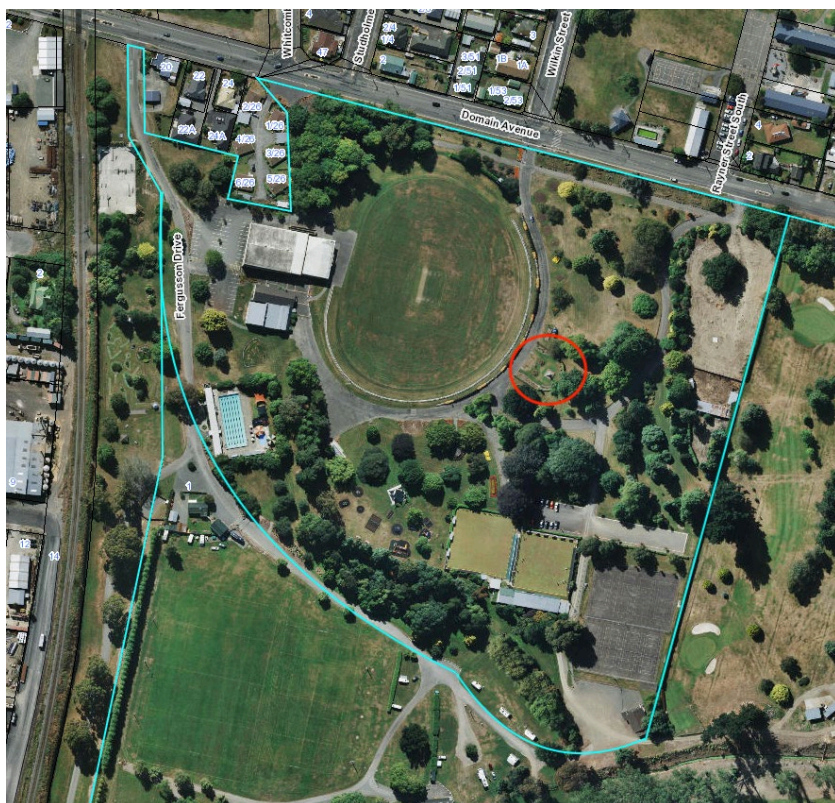
The Temuka War Memorial has overall heritage significance to Temuka and the district of Timaru. The memorial has historical and social significance for its association with the local men who died serving in the two world wars and cultural significance given its commemorative purpose. The Temuka War Memorial has aesthetic value as a decorative obelisk and craftsmanship significance for the quality of its construction and detailing by Christchurch stonemason George Parsons. The Temuka War Memorial has contextual significance as a landmark feature within the Temuka Domain and its site may have archaeological value in light of the development of the domain since the early 1870s.

HERITAGE CATEGORY

B

REFERENCES

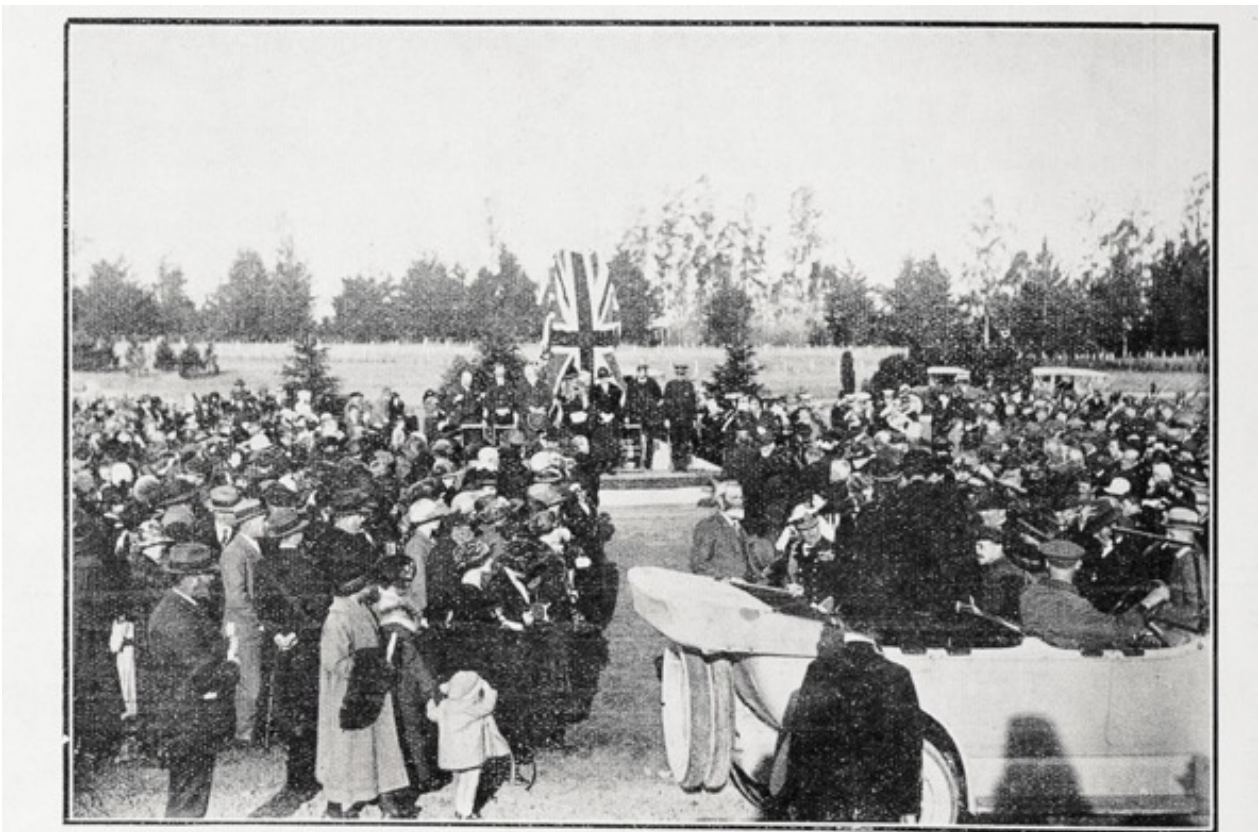
- *Temuka Leader* 13 May 1922, p. 3; 18 May 1922, p. 2; 27 July 1922, p. 2; 10 August 1922, p. 2; 12 August 1922, p. 2; 24 April 1924, p. 2; 23 April 1927, p. 2.
- *Timaru Herald* 2 August 1920, p. 6; 21 August 1920, p. 4.
- *Press* 11 August 1922, p. 9; 12 November 1940, p. 7.
- <https://sites.rootsweb.com/~nzlscant/temuka.htm>
- <https://nzhistory.govt.nz/media/photo/temuka-war-memorial>
- <http://ketechristchurch.peoplesnetworknz.info/en/site/topics/show/2092-monumental-stonemasons-who-worked-in-linwood-cemetery#.Xhjr0i2B1z9>
- C Maclean & J Phillips *The Sorrow and the Pride – New Zealand War Memorials* Wellington, 1990.



Extent of setting, limited to immediate setting, Temuka Domain, Domain Avenue, Temuka.



Location of Temuka War Memorial in context of Temuka Domain, Domain Avenue, Timaru.



Unveiling of Temuka War Memorial. *Auckland Weekly News* 24 August 1924, p. 46. AWNS-19220824-46-4, Auckland Libraries Heritage Collections.