

**TIMARU DISTRICT COUNCIL**  
**HISTORIC HERITAGE ITEM RECORD FORM**

---

**HERITAGE ITEM NAME** 'Daisy Hill' Farmhouse / Collett Cottage  
**ADDRESS** 590 Opihi Road, Totara Valley, Pleasant Point

**PHOTOGRAPH**



(HNZPT)

**FORMER DISTRICT PLAN ITEM No.** No. 72      **HNZ LIST No. & CATEGORY** 3146 / 2  
(at time of assessment)

**LEGAL DESCRIPTION** Lot 1 DP 4990

**VALUATION NUMBER** 2481012500

**DATE OF CONSTRUCTION** c.1868 +

**ARCHITECT/DESIGNER/  
BUILDER** Henry Collett, owner/builder

**STYLE** Colonial vernacular

**PHYSICAL DESCRIPTION**

Single-storey dwelling with irregular L-shaped footprint and hipped and gabled roof forms. Roof extends to form a sheltered veranda on the north-facing façade; it is carried on timber posts with decorative brackets. Veranda terminated at west end by flat-faced gabled bay. Double-hung sash windows and scalloped bargeboards.

**MATERIALS/STRUCTURE**

Random rubble and coursed limestone, timber and corrugated metal.

**ADDITIONS/ALTERATIONS**

Cross-gabled bay and two-stage lean-to additions (date unknown/later 19<sup>th</sup> C?).

**SETTING**

The farmhouse stands roughly midway between Opihi Road in the south and the Opihi River in the north. It is some distance from the roadway, at the eastern extremity of the land parcel. The former Opihi Hotel (heritage item # 71) is located to the south-east of the dwelling. Some distance away from the farmhouse site, Collett Road comes off the north side Opihi Road, suggesting the historic extent of the 'Daisy Hill' farm. The extent of setting is limited to the immediate environs of the cottage, rather than the land parcel as a whole.

## **HISTORY**

Henry Collett (1837-1902) was born in Wales. The son and stepson of butchers, Collett left England in 1857 bound for Australia, where he was involved in shipping horses to India and tried his luck on the Australian goldfields. Collett arrived in New Zealand in 1861 and worked on a sheep farm in Otago before moving to Raincliff Station. He bought land on the Opihi Flats in 1863 and subsequently farmed sheep on the limestone country. Collett also sold stone and had a lime kiln on his property. He married Ann Davis, who was also from Wales, in 1864 and the couple had five children, three of whom survived infancy. A wooden hut was first built by Collett and after that washed away in a flood in 1868, a new stone cottage was erected on higher ground. The farm was named 'Daisy Hill' after an Australian goldfield and its farmhouse provided the first venue for the local school. Henry Collett served on the school committee and the family gifted limestone for the construction of the Catholic church at Temuka in c.1880. Henry and Ann Collett and other members of the family are buried in the Pleasant Point cemetery. The property was being farmed by Henry and Ann's son Walter at the time of Ann's death in 1916. Two years later the property was surveyed by Walter's sister Charlotte Maxwell, who lived at 'Greenhills', Kakahu. Walter Collett had married Annie Maxwell of Greenhills in 1897. It appears the house remained in the family until the late 1990s.

## **HISTORICAL AND SOCIAL SIGNIFICANCE**

The former 'Daisy Hill' farmhouse has historical significance for its association with the Collett family and the development of farming and quarrying in the area. The staged construction of the house illustrates the rising fortunes of the family.

## **CULTURAL AND SPIRITUAL SIGNIFICANCE**

The former 'Daisy Hill' farmhouse has cultural value as a demonstration of the way of life of the families who have resided in the dwelling since its construction.

## **ARCHITECTURAL AND AESTHETIC SIGNIFICANCE**

The former 'Daisy Hill' farmhouse has architectural significance as an example of a Victorian farmhouse rendered in permanent materials. It is believed that Henry Collett designed and built his own home; the design follows the vernacular conventions of the mid-19<sup>th</sup> century.

## **TECHNOLOGICAL AND CRAFTSMANSHIP SIGNIFICANCE**

The former 'Daisy Hill' farmhouse has technological and craftsmanship significance for its locally quarried, stone masonry construction and timber detailing. A number of other limestone houses, farm buildings and bridges in the Totara Valley attest to the use of the local building stone in the 1870s and 1880s.

## **CONTEXTUAL SIGNIFICANCE**

The former 'Daisy Hill' farmhouse has contextual value as a historic feature within its rural setting and in relation to the former Opihi Hotel (heritage item #71).

## **ARCHAEOLOGICAL AND SCIENTIFIC SIGNIFICANCE**

As the farmhouse pre-dates 1900 its site has potential archaeological significance relating to the dwelling's construction and the development of pastoralism in the Totara Valley.

## **SUMMARY OF HERITAGE SIGNIFICANCE**

The former 'Daisy Hill' farmhouse (Collett Cottage) has overall heritage significance to the Totara Valley and Timaru district as a whole. The farmhouse has historical significance for its association with the Collett family and the development of farming in the area and cultural

value as a demonstration of the way of life of its former residents. The former 'Daisy Hill' farmhouse has architectural significance as a Victorian vernacular farmhouse and technological and craftsmanship significance for its masonry construction using locally quarried limestone. The former 'Daisy Hill' farmhouse has contextual value as a historic feature in the Opihi Flats landscape and in relation to a nearby historic hotel. The former 'Daisy Hill' farmhouse has potential archaeological significance in view of its pre-1900 date of construction.

## HERITAGE CATEGORY

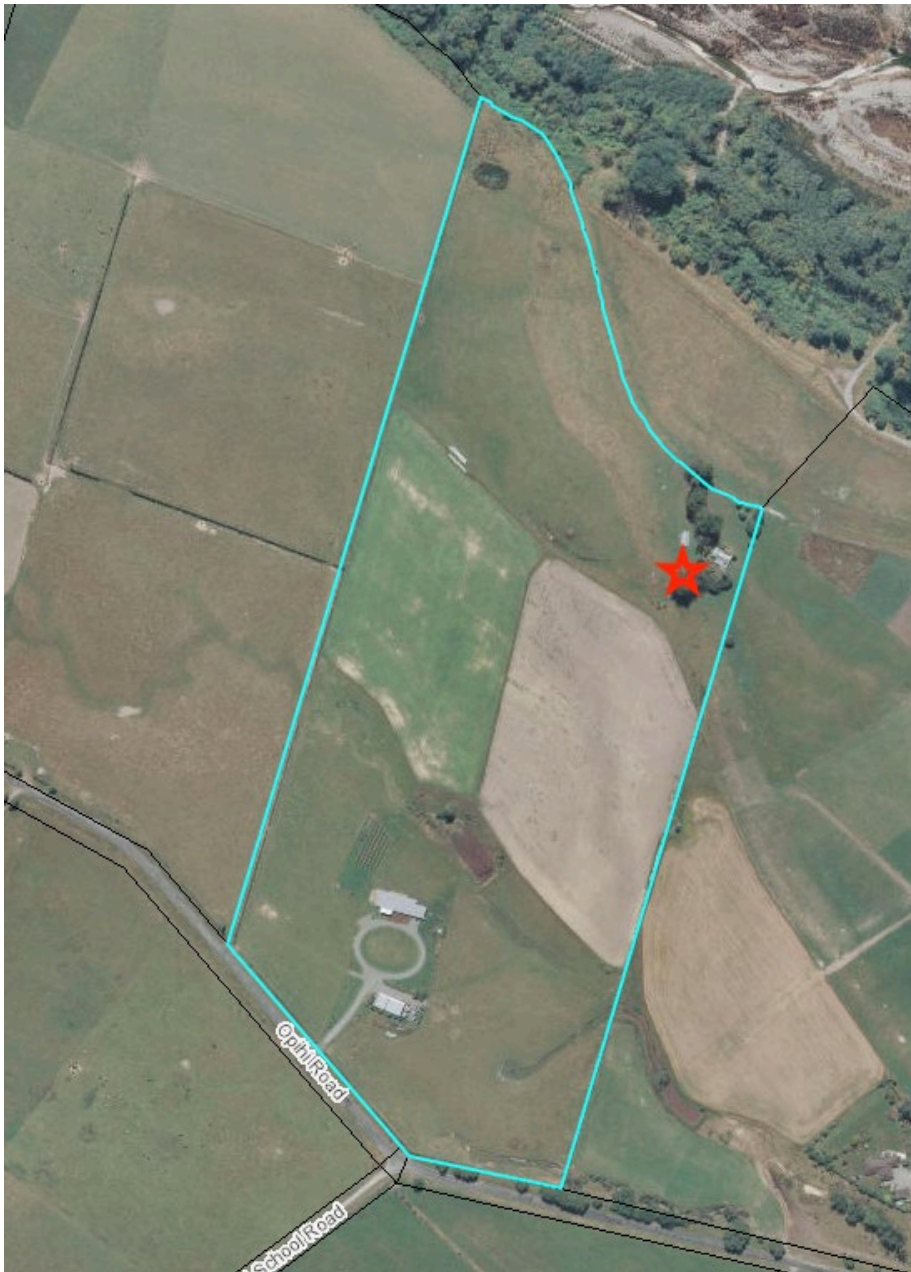
B

## REFERENCES

- *Timaru Herald* 19 December 1868, p. 2; 24 April 1872, p. 3; 27 September 1872, p. 4; 30 May 1873, p. 3; 23 November 1874, p. 3; 9 April 1883, p. 3; 8 December 1883, p. 2; 14 January 1884, p. 4; 5 June 1896, p. 4; 21 June 1897, p. 2; 23 August 1916, p. 8.
- *South Canterbury Times* 11 October 1889, p. 3.
- *Lyttleton Times* 9 July 1902, p. 2.
- *Temuka Leader* 10 July 1902, p. 2.
- *Cyclopedia of New Zealand – Canterbury Provincial District* Christchurch, 1903; available online.
- <http://www.heritage.org.nz/the-list/details/3146>
- Collett family history: <http://www.collettfamilyhistory.net/Part-53-The-South-Wales-Branch-Line-Rev.9.htm>



Extent of setting, limited to immediate setting, 590 Opihi Road, Totara Valley, Pleasant Point.



Land parcel as a whole, farmhouse site marked by star.