

TIMARU DISTRICT COUNCIL
HISTORIC HERITAGE ITEM RECORD FORM

HERITAGE ITEM NAME Timaru Main School War Memorial
ADDRESS 34 Arthur Street (cnr Grey Road), Timaru

PHOTOGRAPH



(SCM)

DISTRICT PLAN ITEM NO. New **HNZ LIST No. & CATEGORY** n / a
(at time of assessment)

LEGAL DESCRIPTION Lot 2 DP 60138

VALUATION NUMBER 2499129300

DATE OF CONSTRUCTION 1921

**ARCHITECT/DESIGNER/
BUILDER** Unknown

STYLE Classical obelisk

PHYSICAL DESCRIPTION

Square-plan obelisk mounted on five-step base. Concrete surround built out to the corner of the site creates a niche for the memorial, which is set against solid panel fencing with 'trellised' uppers. Lower parts of memorial are bluestone, lower two sections being rough-hewn topped by an ashlar cut stone. Three upper sections are granite with two sections beneath the obelisk bearing inscriptions on the north-west and south-west sides.

MATERIALS/STRUCTURE

Granite and bluestone (basalt), concrete.

ADDITIONS/ALTERATIONS

Addition of World War II commemorative text (date unknown, post-1945).

SETTING

The war memorial is set within a paved niche at the corner of Arthur Street and Grey Road, immediately adjacent to the former Timaru Main School headmaster's house (heritage item # 52). Historic concrete and wrought iron fencing frames the site on either side of the memorial. The extent of setting is the same as for the former headmaster's house and includes the historic fencing on both street frontages.

HISTORY

A meeting of 'all householders and ex-pupils of the Timaru Main School' was held on 10 July 1919 to discuss proposals to erect an old boys' war memorial. Fundraising efforts ensued and in August 1920 it was decided to take the proposal of erecting a memorial obelisk at the corner of Grey Road and Arthur Street to subscribers. The corner site was chosen to allow members of the public to view the memorial, as opposed to if it was erected further within the school grounds. The Timaru Main School War Memorial was duly erected in the winter of 1921 to commemorate the 70 former teachers and pupils who died serving in World War I and the 361 others who fought and returned. The foundation stone, in which scrolls containing the names of the servicemen were inserted, was laid on 16 June 1921; the memorial was unveiled nine days later. It is still used for ANZAC Day commemorations.

HISTORICAL AND SOCIAL SIGNIFICANCE

The Timaru Main School War Memorial has historic and social significance for its association with Timaru Main School's commemoration of World War I and II and, more generally, with the proliferation of ornamental war memorials that were erected throughout New Zealand in the 1920s.

CULTURAL AND SPIRITUAL SIGNIFICANCE

The Timaru Main School War Memorial has cultural significance as a place of community identity and historic continuity. The memorial has commemorative significance within a modern-day educational environment.

ARCHITECTURAL AND AESTHETIC SIGNIFICANCE

The Timaru Main School War Memorial has aesthetic value as a conventional ornamental obelisk. The designer is currently unknown.

TECHNOLOGICAL AND CRAFTSMANSHIP SIGNIFICANCE

The Timaru Main School War Memorial has craftsmanship significance for the nature of its materials and the quality of its construction and detailing.

CONTEXTUAL SIGNIFICANCE

The Timaru Main School War Memorial has contextual significance as a local landmark within the environs of the former Timaru Main School campus and it has a direct physical and historic relationship with the former headmaster's house on the same site (1878, heritage item # 52).

ARCHAEOLOGICAL AND SCIENTIFIC SIGNIFICANCE

Although the memorial post-dates 1900, its site has potential archaeological significance relating to the development of the Timaru Main School, including the adjacent headmaster's house.

SUMMARY OF HERITAGE SIGNIFICANCE

The Timaru Main School War Memorial has overall heritage significance to Timaru and the district of Timaru. The memorial has historical and social significance for its association with the former staff and pupils of Timaru Main School who died serving in World Wars I and II and cultural significance given its commemorative purpose. The Timaru Main School War Memorial has aesthetic value for its conventional obelisk design and craftsmanship significance for the quality of its construction and detailing. The Timaru Main School War Memorial has contextual significance as a local landmark and for its relationship to the former

headmaster's house. The memorial's site may have archaeological value in light of the mid-Victorian development of the Timaru Main School campus.

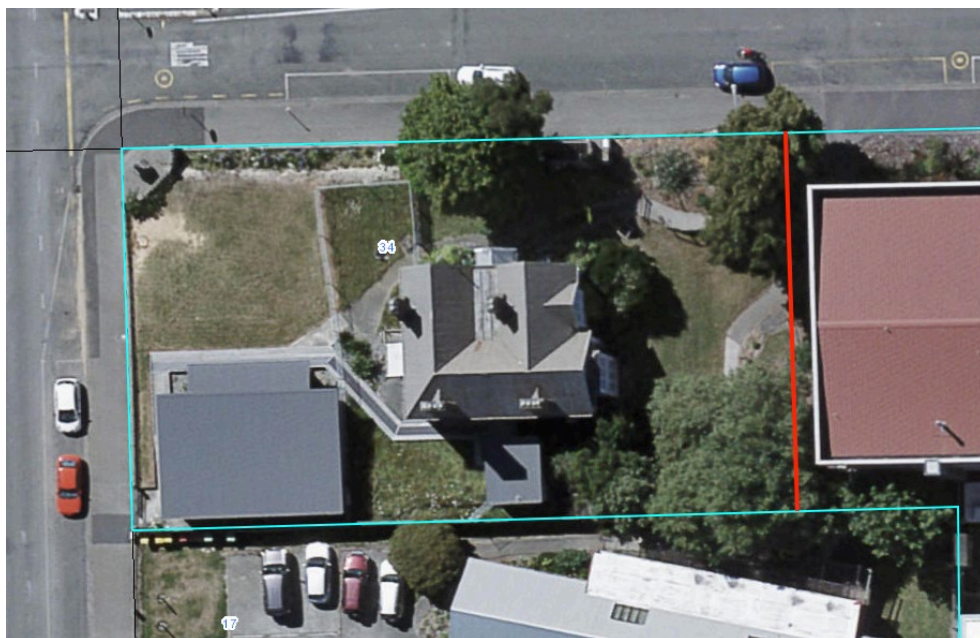
HERITAGE CATEGORY

B

REFERENCES

- *Timaru Herald* 10 July 1919, p. 1; 11 July 1919, p. 3; 14 July 1919, p. 3; 17 July 1919, p. 3; 21 August 1919, p. 6; 27 September 1919, p. 2; 29 July 1920, p. 8; 26 August 1920, p. 7.
- *Temuka Leader* 18 June 1921, p. 2.
- <http://www.heritage.org.nz/the-list/details/2076>
- <https://nzhistory.govt.nz/media/photo/timaru-main-school-war-memorial>
- C Maclean & J Phillips *The Sorrow and the Pride – New Zealand War Memorials* Wellington, 1990.

REPORT COMPLETED	17 October 2018
AUTHOR	Dr Ann McEwan / Heritage Consultancy Services
REPORT UPDATED	XX
AUTHOR	XX
PEER REVIEWED	XX
REVIEWER	XX



Extent of setting, shared with former headmaster's house and including the historic fencing on the north and west boundaries, 34 Arthur Street, Timaru.



Land parcel as a whole.

