

TIMARU DISTRICT COUNCIL
HISTORIC HERITAGE ITEM RECORD FORM

HERITAGE ITEM NAME Woodbury War Memorial & Eleanor Howard Tripp Memorial Library

ADDRESS Cnr Woodbury & McKeown Roads, Woodbury

PHOTOGRAPH



District Plan Item No. New **HNZ LIST No. & CATEGORY** n / a

LEGAL DESCRIPTION Part Lot 9 DP 887

VALUATION NUMBER 2466021100

DATE OF CONSTRUCTION 1922 + 1936

**ARCHITECT/DESIGNER/
BUILDER** Unknown (war memorial); Herbert Cooling (library)

STYLE Celtic cross (war memorial); Arts & Crafts (library)

PHYSICAL DESCRIPTION

Celtic cross memorial, mounted on stepped base, is set within a paved forecourt bordered by a random rubble perimeter wall. Forming the backdrop to the war memorial is a single-storey building with rectangular footprint and half-hipped roof. Gabled entrance porch supported by stone pillars has memorial name board set within gable end. Vertical board and batten lower walls with lapped weatherboards above. Multi-pane casement windows, two boxed bay windows on east elevation. Dedication plaque on building front.

MATERIALS/STRUCTURE

Bluestone & river boulders (war memorial); river boulders, timber, corrugated iron (library).

ADDITIONS/ALTERATIONS

Addition of polished granite World War II plaque to war memorial (post-1945).

SETTING

The war memorial and library stand on a corner site bounded by Woodbury Road to the east and McKeown Road in the west. Woodbury School is immediately to the east along Woodbury Road; the settlement is largely to the north and west of the memorial library site. The extent of scheduling is the land parcel on which the war memorial and library are located. It is noted, however, that the building appears to extend slightly into the neighbouring property occupied by Woodbury School (559-561 Woodbury Road).

HISTORY

The settlement of Woodbury was originally known as Waihi Bush. It began as a milling camp in the mid-1860s and later evolved into a small rural service centre. A two-room school opened in Woodbury in 1881, a Coronation Hall was erected in the domain across the road in 1912 and the district's World War I memorial was erected on the edge of the school grounds ten years later. Thomas Cheyne Farnie, whose only son Stuart had been killed in France in 1917, was the honorary secretary of the war memorial committee. The memorial was unveiled on 12 April 1922, three years after a Roll of Honour had been installed in the Coronation Hall. The Tripp family of Orari Gorge was closely involved with St Thomas's Anglican Church at Woodbury (1878+) and the village's purpose-built library was erected to the memory of Eleanor Howard Tripp (1867-1936) after her death in January 1936. The building was officially opened on 5 December 1936 by local MP TD Burnett. Miss Tripp had been an active member of the community and was the founder of the Woodbury Women's Institute. Previously the library (est. 1911) had been housed in the school. In 2013 a project was launched by the South Canterbury Museum and local genealogists to create a database of all those South Canterbury people who served in World War I, as part of the nationwide WW100 commemorations. The Woodbury war memorial continues to be the focus for local ANZAC Day commemorations and the library, which also houses a history room, is run by volunteers.

HISTORICAL AND SOCIAL SIGNIFICANCE

The Woodbury War Memorial has historical and social significance for its association with the district's commemoration of World War I and II and the proliferation of ornamental war memorials that were erected throughout New Zealand in the 1920s. The memorial is directly connected to the people, their families and descendants, whose names are inscribed upon it. Somewhat unusually the ranks of the fallen soldiers are given, contrary to official policy which was that all service personnel had made an equal sacrifice and so should not be divided by rank.

The Eleanor Howard Tripp Memorial Library has high historical and social significance for its association with Eleanor Tripp and for its rarity as a building erected to the memory of a notable woman. The Lady Rhodes Memorial Church at Tai Tapu (better known as St Paul's Anglican Church, 1930-31) and the Ellen Melville Pioneer Women's Hall in Auckland (1947-52) are the only other buildings known to have been built to honour individual women in New Zealand.

CULTURAL AND SPIRITUAL SIGNIFICANCE

The Woodbury War Memorial & Eleanor Howard Tripp Memorial Library have cultural significance as sites of community identity and historic continuity. Both structures are valued for their memorial purpose and, more generally, as a demonstration of the way of life of a rural community whose members worked together to provide their own commemorative and community facilities in the early 20th century.

ARCHITECTURAL AND AESTHETIC SIGNIFICANCE

The Woodbury War Memorial & Eleanor Howard Tripp Memorial Library have architectural and aesthetic significance for their Celtic cross and Arts and Crafts style designs. The war memorial is similar to that designed by Cecil Wood for Geraldine (1920-22). Local contractor Herbert Cooling provided the design for the memorial library; Cooling was later one of the contractors responsible for the completion of St Thomas's Anglican Church in 1938. The library may be compared to the Arts and Crafts style Tai Tapu Public Library, which was also designed by Cecil Wood (1931-32).

TECHNOLOGICAL AND CRAFTSMANSHIP SIGNIFICANCE

The Woodbury War Memorial & Eleanor Howard Tripp Memorial Library have craftsmanship significance for the quality of their construction and detailing, particularly in regard to the use of local river stones. The use of locally sourced materials is an essential characteristic of the Arts and Crafts style and the stone paving and walls create a visual connection between the two structures.

CONTEXTUAL SIGNIFICANCE

The Woodbury War Memorial & Eleanor Howard Tripp Memorial Library have high contextual significance as local landmarks and for their association with Woodbury School and St Thomas's Anglican Church (1926/1938), which is located to the north-east of the site on Burdon Road. The church was completed in 1938 as a memorial to Eleanor Tripp and her brother Charles.

ARCHAEOLOGICAL AND SCIENTIFIC SIGNIFICANCE

Although both the war memorial and memorial library post-date 1900, their site may possess archaeological values arising from the development of the school site since 1881.

SUMMARY OF HERITAGE SIGNIFICANCE

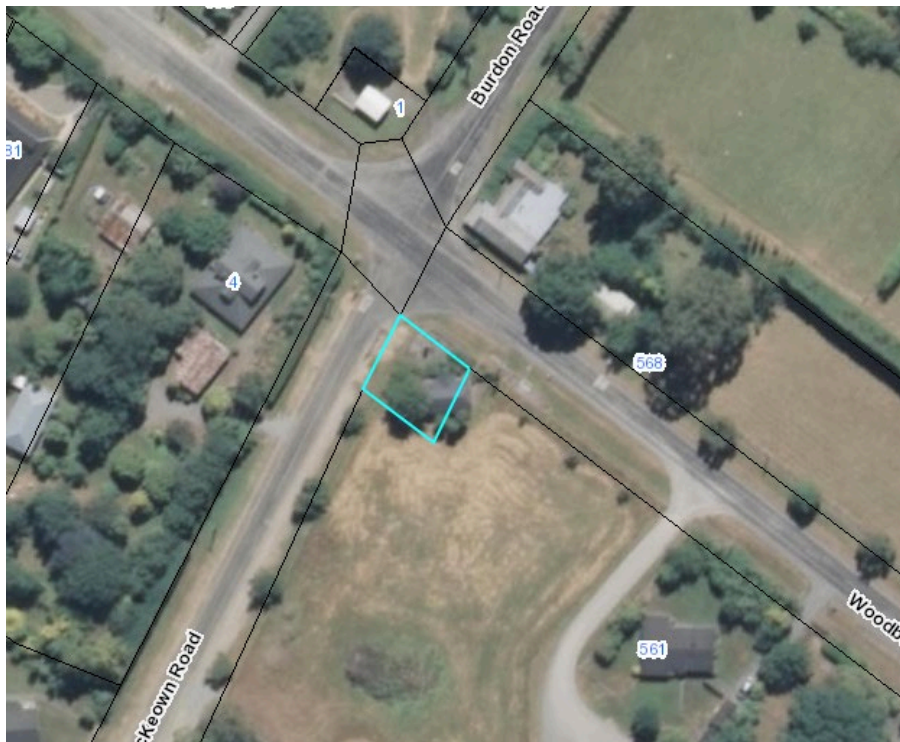
The Woodbury War Memorial & Eleanor Howard Tripp Memorial Library have high overall significance to Woodbury and Timaru district as a whole. The war memorial has historical and social significance for its association with the district's commemoration of World Wars I and II and the library has high historical and social significance as a memorial to a notable local woman. The Woodbury War Memorial & Eleanor Howard Tripp Memorial Library have cultural significance for their commemorative functions and as a demonstration of the way of life of a rural community in the early 20th century. The Woodbury War Memorial & Eleanor Howard Tripp Memorial Library have architectural and aesthetic significance for their Celtic cross and Arts and Crafts style designs, which may have been inspired by other works by leading Christchurch architect Cecil Wood, and craftsmanship significance for their construction and detailing; especially in the use of local river stones. The Woodbury War Memorial & Eleanor Howard Tripp Memorial Library have high contextual significance as local landmarks and in relation to Woodbury School, the nearby Coronation Hall and St Thomas's Anglican Church. Although both structures post-date 1900, their site may have potential archaeological significance in relation to the colonial development of the school site.

HERITAGE CATEGORY

A

REFERENCES

- *Temuka Leader* 15 August 1911, p. 3; 1 November 1919, p. 4; 20 August 1921, p. 1; 23 August 1921, p. 2; 6 April 1922, p. 2; 11 April 1922, p. 3; 21 July 1931, p. 3.
- *South Canterbury Times* 10 December 1885, p. 3.
- *Timaru Herald* 30 May 1911, p. 2.
- *Press* 15 April 1922, p. 5; 19 June 1925, p. 14; 4 January 1936, p. 3; 15 June 1936, p. 8; 29 June 1936, p. 5; 5 December 1936, p. 13; 7 December 1936, p. 5; 3 August 1937, p. 4; 26 March 1938, p. 29.
- *Evening Post* 4 January 1936, p. 8.
- M Jenner *Small Libraries of New Zealand* Tauranga, 2005.
- <https://nzhistory.govt.nz/media/photo/woodbury-war-memorial>
- <https://sites.rootsweb.com/~nzlscant/stthomas.htm>
- https://www.woodburyhall.co.nz/about_woodbury.html
- <http://www.aucklandmuseum.com/war-memorial/online-cenotaph/record/C4689>
- <http://sites.rootsweb.com/~nzlscant/fishing.htm>



Extent of scheduling, intersection of Woodbury & McKeown Roads, Woodbury.



**MISS ELEANOR HOWARD
TRIPP**