

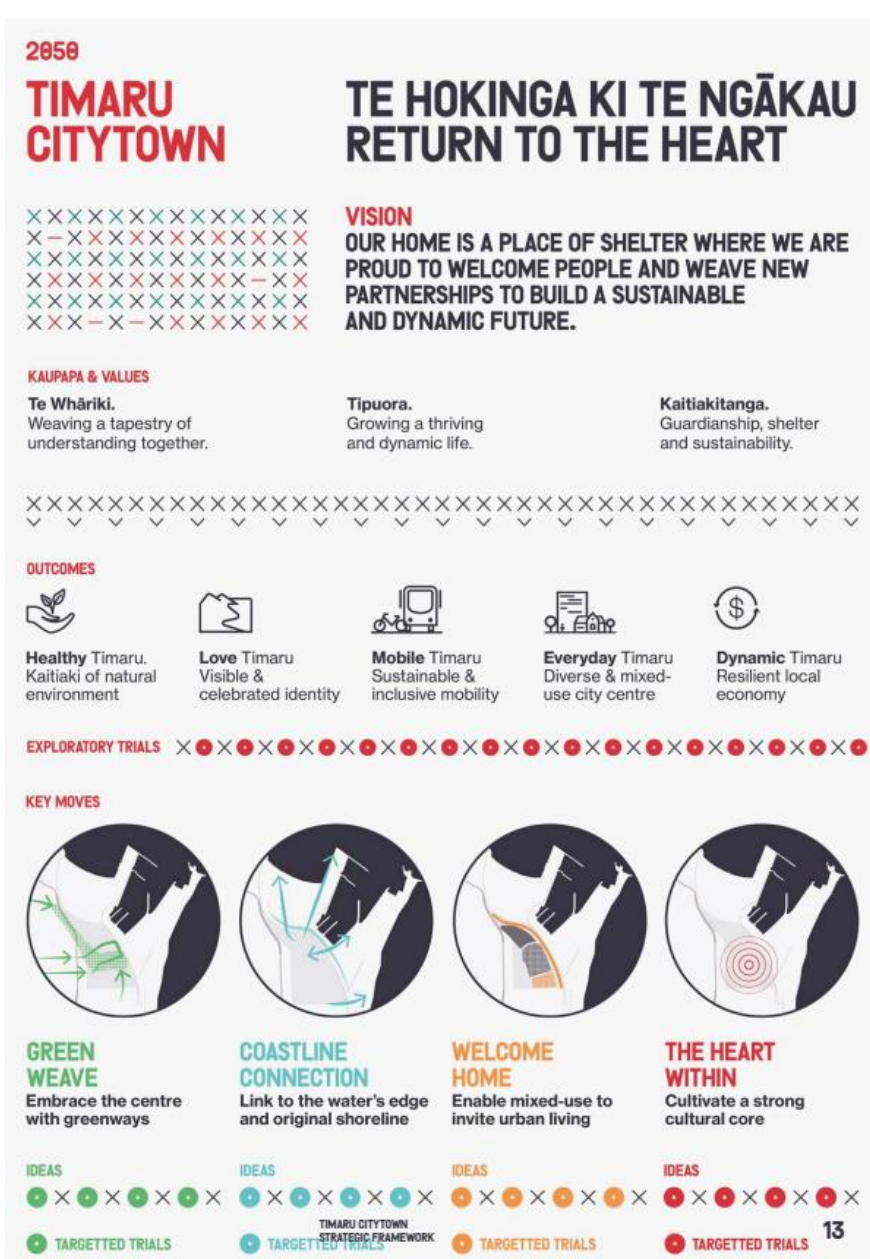
City Hub Programme

Progress report – Issue 3 – 10 May 2022

OVERVIEW

With the research/stocktake and initial workshopping phase in our process completed we are now able to share the Strategic Framework for Timaru CityTown that will underpin not only the evolving Tactical Master Plan but also the suite of possible trials that will enable our wider community both to understand and to shape the ongoing design and prioritisation process.

The draft Strategic Framework, which includes a summary of projected trials, will be considered by the Project Steering Group in May 2022. Detailed memos and concepts for each trial will be presented in due course as details are refined.



ENGAGEMENT

Community engagement with both the Strathallan Corner installation and the present Code Breakers activity has been very positive. External media coverage has focused on the high levels of participation and social media comments are enthusiastic and encouraging.

The Community Advisory Group and Development and Investment Group have completed their design workshop series and now move to quarterly review meetings and focus sessions.

FINANCIALS

As at April 2022 actual expenditure stood at \$667,205 which is ahead of the original project forecast but aligned with recent and upcoming contractual variations. Now that our multidisciplinary consultant team has completed a first tranche of strategic and spatial analysis they are in a much better informed position from which to price and we are in a much better position from which to prioritise.

PROJECT UPDATE

Project	Update
City Hub Core Programme (\$ 0-\$250k, \$\$ up to \$500k, \$\$\$ over \$500k)	
Website and Brand \$	Brand work is nearing sign off (May 2022) and the website will be updated with the new look and feel. At this time (June/July 2022) we will also do a public launch of the strategic framework and possibilities for upcoming trials both online and at the project space at 184 Stafford Street.
Urban Master Plan and Trials Programme \$\$\$	Strathallan Corner evaluation report has confirmed the value of the installation both in triggering conversation and testing assumptions re site orientation. Code Breakers, which will encourage and monitor foot traffic throughout the CBD, is live with 86 bookings to date (62 SC Museum, 24 Hector Blacks). Both trials received very positive media attention and social media engagement.
Earthquake Prone Buildings Toolkit \$	Basic toolkit (the regulatory view) has been completed. EPB Liaison Officer business case was endorsed by SLT and a brief has been sent to suitably qualified individuals. Proposals received will be reviewed with an appointment anticipated for May 2022.
Impact Investment Toolkit \$	Tools to measure private investment and community impact, to prioritise options for private investment and to enable and encourage private investment. On hold pending resourcing.
MyWay Parklet \$	Draft concept has been socialized with key stakeholders to ensure that the trial installation is comfortable, convenient and appropriate to the needs of all of our diverse community and user groups. Final design and Stafford St location will be socialized June/July 2022 with installation scheduled for Spring 2022.
Mana Whenua \$	Tewera King and Fran Jackson have provided a cultural narrative report, have gifted us our project tagline, Te Hokinga Ki Te Ngākau Return to the Heart, and have informed both our kaupapa and values and our graphic language. This partnership is critical to our Strategic Framework and will continue to evolve through the master planning and trial processes.
Caroline Bay	Return brief for master planning now received, preparing contractual variation.
Speaker Series	Programme under development. 44 people have indicated that they will attend our Saving the Town sessions with Glen Hazelton in person on 28 April 2022 with others joining online.
Linked Work Programmes	
Heritage Hub \$\$\$	https://www.timaru.govt.nz/community/facilities/theatre-royal-and-heritage-hub
District Plan \$\$\$	Input ongoing to encourage and incentivise residential development in the city centre while maintaining commercial viability. Site capacity testing will be underway shortly.
Parking Strategy \$	The Land Transport Unit (LTU) is leading the development of a District Parking Strategy. Parking Management plans for Timaru, Temuka and Geraldine will be developed following adoption.
BID Opportunity \$	The CBD Group are working with the Strategy and Corporate Planning Unit to progress.
Streets for People \$	Waka Kotahi programme funding network improvements to promote active transport. Successful LTU application through to “Funding the Foundations” stage based around the CityHub trials, projects contemplated. Confirmation of available funding and project suite anticipated mid 2022.

RISKS

- Covid restrictions and business impact to date inhibit stakeholder and community participation
- The success of the City Hub Programme relies on voluntary investment from the private sector into our city centre and voluntary behaviour change (eg transport mode shift). Iterative engagement and relationship building is key but there are many variables not under the direct control of Council.
- The pressure to realise quick wins is at odds with the recognised need to shift from ad hoc to strategic investment. Backlash is anticipated on the upfront investment in robust planning and design.
- Preliminary engagement revealed that community and stakeholder expectations for public investment and impact are not well aligned with the available budget