



# Temuka Community Board.

**10 Year Works Programme.**



# Contents.

Contents.	2
Introduction.	3
Works Programme. 1-3 Year Priority.	4
Works Programme. 4-6 Year Priority.	8
Works Programme. 7-10 Year Priority.	11
Projects Map.	12
Appendix	13



## **Timaru District Council Temuka Community Board - 10 Year Works Programme.**

Timaru District Council  
PO Box 522, Timaru 7940  
**T** (03) 687 7200  
**E** enquiry@timdc.govt.nz

[www.timaru.govt.nz](http://www.timaru.govt.nz)

*Cover image:  
Temuka artwork - Temuka Library.*

# Introduction.

The Temuka Community Board have developed a works programme for Temuka and the surrounding area including Winchester.

This programme has been produced following the consultation and delivery of the Temuka Strategic Plan. It outlines a range of big and small projects that Council, the Community Board, and members of the wider commercial and not for profit community could undertake to make a difference over the next 10 years.

In April 2022, the Community Board consulted our local community to sense check their vision for Temuka and better understand the aspirations of locals and visitors alike. The key objectives listed opposite support our vision to 'Get Ahead' Temuka. The projects in the following programme have been included, and prioritised, based on how well they will give impact to this vision.



## Live, Work & Play.

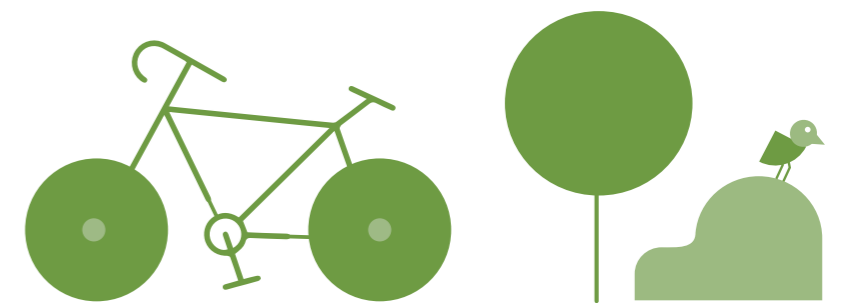
**Objectives:**

- promote residential growth
- promote business growth
- enable residents to stay for a life time
- enable families to stay together
- improve facilities and amenities for residents

## Stop, Stay & Spend.

**Objectives:**

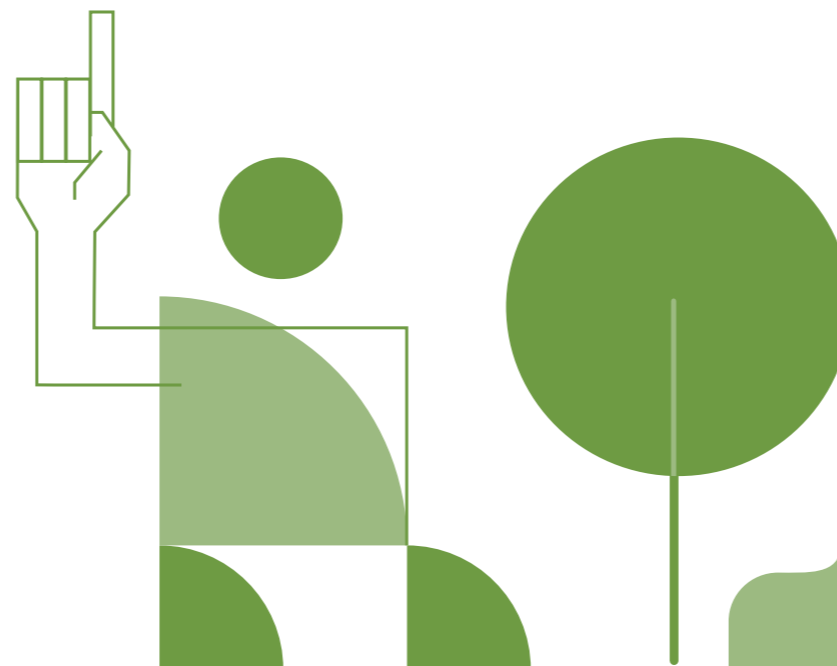
- encourage visitors to stop, stay and spend
- improve connections with the wider district



## Connect With Identity.

**Objectives:**

- create a clean, fresh, attractive environment
- create a strong identity/ point of difference or 'specialness'
- create a special relationship with Te Rūnanga o Arowhenua



# Works Programme. 1-3 Year Priority.

\*Project Size Key:  
Small \$0 - \$10,000  
Medium \$10,000 - \$100,000  
Large \$100,000+

Relevant Objective	Relevant Key Move	Project No.	Project Name	Description	Project Size*	Key Partners & Stakeholders
Stop, Stay & Spend Connect With Identity	Greening The Gateways	1A	<b>Gateway Signage</b>	Providing new signage at key 'gateway' points off Vine Street and wayfinding to the main street. Signage could tie into iconic new place theme for Temuka. Includes the design and installation of the following: - Wayfinding signage from SH1 to Main St, particularly along the alley opposite Commerce St. - Wayfinding signage to toilets from SH1.	Medium	TDC Land Transport Unit
Live, Work & Play Stop, Stay & Spend Connect With Identity	Greening The Gateways	1B	<b>Vine St Planting</b>	Planting and landscaping along Vine St in collaboration with local landowners. A concept has been created and some funding has been secured, although there is potentially further landscape funding required.	Medium	TDC Parks Unit Arowhenua
Stop, Stay & Spend Connect With Identity	Greening The Gateways	1C	<b>Temuka Place Theme</b>	Commission a designer to create a place theme for Temuka based on consultation and collaboration with the community, local businesses, and Arowhenua. This will form the basis for consistent signage, wayfinding design and other marketing initiatives within Temuka. May be scoped to also include trail wayfinding within Temuka.	Medium	Venture Timaru Arowhenua
Live, Work & Play Stop, Stay & Spend Connect With Identity	Connect Vine St to King St	2A	<b>Connection - Enhancement.</b>	Design and implement a short term enhancement of the existing link from Vine St, across King St, to Commerce St to draw visitors into the town centre. Enhancements could include installing festoon lighting, planting, murals, and painted graphics to paving.	Medium	TDC Land Transport Unit
Live, Work & Play Stop, Stay & Spend Connect With Identity	Connect Vine St to King St	2B	<b>Main Street Vibrancy</b>	Adding vibrancy to King St through minor beautification works such as installing planting boxes, festoon lighting, parklets and painting buildings. Investment to align with retail heart defined in the Town Living Centre Design Investigation.	Small	TDC Land Transport Unit

# Works Programme. 1-3 Year Priority.

\*Project Size Key:  
Small \$0 - \$10,000  
Medium \$10,000 - \$100,000  
Large \$100,000+

Relevant Objective	Relevant Key Move	Project No.	Project Name	Description	Project Size*	Key Partners & Stakeholders
Live, Work & Play	Staying In The Centre	3A	<b>Retirement In The Centre - Visioning Document</b>	Create a visioning document with inspiring imagery to market and advocate for the opportunity for Temuka town centre to support retirement living. This includes collaborating with the TDC Property Unit to understand how council senior living can be incorporated into this vision to address a current need for more low-income living options in the town.	Medium	Venture Timaru TDC Property Unit
Live, Work & Play	Staying In The Centre	3B	<b>Community Gardens</b>	Community gardens/farm gate/co-op established.	Small	
Live, Work & Play Stop, Stay & Spend Connect With Identity	Staying In The Centre	3C	<b>Town Centre Living - Design Investigation &amp; Plan Change Submission</b>	Complete design work to define a consolidated core to Temuka's retail heart and identify areas to be backfilled with more dense residential development. Project also includes to inform Council led infrastructure capacity investigation, community consultation, and investigation into the reverse sensitivity effects of development alongside SH1 and industrial land. Project ends with a District Plan variation submission to TDC to address current planning barriers.	Medium	TDC Planning Unit Venture Timaru TDC EPB Liaison Officer
Live, Work & Play Stop, Stay & Spend Connect With Identity	Staying In The Centre	3D	<b>Activate Untenanted Buildings</b>	Instigate community functions in currently untenanted buildings within the town centre to support urban living. Could provide for uses such as art exhibitions, makers spaces, craft groups, bookable areas etc. Includes budget to rent spaces, fit out, and provide funding to community groups. Focus activities within the urban core defined in the Town Centre Living Investigation.	Medium	TDC Community Development Unit
Live, Work & Play Stop, Stay & Spend Connect With Identity	Connect Town to Trails	4A	<b>Temuka Trails - Existing Conditions Assessment</b>	Inclusion of path renewals condition assessment and safety audit recommended- including CPTED. Some paths not suitable for advertising as bike trails due to likely pedestrian conflicts etc.	Medium	TDC Parks Unit

# Works Programme. 1-3 Year Priority.

\*Project Size Key:  
Small \$0 - \$10,000  
Medium \$10,000 - \$100,000  
Large \$100,000+

Relevant Objective	Relevant Key Move	Project No.	Project Name	Description	Project Size*	Key Partners & Stakeholders
Live, Work & Play Stop, Stay & Spend Connect With Identity	Connect Town to Trails	4B	<b>Temuka Trails - Wayfinding</b>	Includes the design and installation of temporary and permanent wayfinding devices throughout Temuka township to link trails along the Taumatakahu Stream, campground and Domain with the town centre to form a 7km town loop. Wayfinding is linked to Temuka place theme. It could include signage but also temporary or low cost interventions such as colour cues/ stencils on asphalt/vegetation clearance/planting themes, vertical marker poles, etc.	Small	TDC Land Transport Unit TDC Parks Unit
Live, Work & Play Stop, Stay & Spend Connect With Identity	Connect Town to Trails	4C	<b>Temuka Trails - Domain Family Cycle Track</b>	Develop a family cycle track around the Temuka Domain that will include the recently erected history boards, aviary, and swimming pool, and will be suitable for younger families. Wayfinding is linked to Temuka place theme. It could include signage but also temporary or low cost interventions such as colour cues/ stencils on asphalt/vegetation clearance/planting themes, vertical marker poles, etc.	Medium	TDC Parks Unit
Live, Work & Play Stop, Stay & Spend Connect With Identity	Connect Town to Trails	4D	<b>Temuka Trails - Skills Park</b>	Design and install a temporary/permanent pump track (potentially including a bike repair station/ bike rack/water fountain) at the end of Commerce St near the Boxing Club to activate linkage and bring more activity into town centre.	Medium	TDC Parks Unit Kiwi Rail
Live, Work & Play Stop, Stay & Spend Connect With Identity	Connect Town to Trails	4E	<b>Temuka Trails - Winchester Via McNairs Road</b>	Implement a cycle trail along McNairs Road to connect trails within Temuka town to Winchester and extend into town along Whitcombe Street (with potential for path through Gunnion/Buzan Square). Install wayfinding signage.	Medium	TDC Land Transport Unit
Live, Work & Play Stop, Stay & Spend Connect With Identity	Connect Town to Trails	4F	<b>Temuka Trails - State Highway 1 Crossing By Temuka River</b>	Implement a safe crossing under SH1 (Temuka town-south end) at the Temuka River. This trail then extends through Arowhenua to the marae and from Hopkinson Rd to the Opihi Bridge to connect Temuka town with the Opihi River trail.	Medium	TDC Land Transport Unit Waka Kotahi ECAN Arowhenua

# Works Programme. 1-3 Year Priority.

\*Project Size Key:  
Small \$0 - \$10,000  
Medium \$10,000 - \$100,000  
Large \$100,000+

Relevant Objective	Relevant Key Move	Project No.	Project Name	Description	Project Size*	Key Partners & Stakeholders
Live, Work & Play Stop, Stay & Spend Connect With Identity	Connect Town to Trails	4G	<b>South Canterbury Trails - Focus Group.</b>	Create a community group to champion cycling, cycle tourism, and a trail network across the Temuka, Geraldine, and Pleasant Point wards. Group may include representation from Arowhenua. Appoint a permanent/part-time role to co-ordinate and project manage on behalf of Temuka	Medium	TDC Land Transport Unit Geraldine Community Board Pleasant Point Community Board Venture Timaru Arowhenua
Stop, Stay & Spend Connect With Identity	Connect Town to Trails	4H	<b>South Canterbury Trails - Brand.</b>	Commission a designer to create a place theme or brand for the trail network based on consultation and collaboration with the community, local businesses, and Arowhenua. This will form the basis for consistent wayfinding signage, app, and website design.	Medium	TDC Land Transport Unit Geraldine Community Board Pleasant Point Community Board Venture Timaru Arowhenua
Live, Work & Play Stop, Stay & Spend Connect With Identity	Connect Town to Trails	4I	<b>South Canterbury Trails - Feasibility Study.</b>	Desktop study, complemented by consultation and on the ground route investigations, to assess feasibility of routes within Temuka and links to nearby centres including Temuka, Geraldine, Winchester, and Timaru including road crossings.	Medium	Geraldine Community Board Pleasant Point Community Board Venture Timaru TDC Land Transport Unit

# Works Programme. 4-6 Year Priority.

\*Project Size Key:  
Small \$0 - \$10,000  
Medium \$10,000 - \$100,000  
Large \$100,000+

Relevant Objective	Relevant Key Move	Project No.	Project Name	Description	Project Size*	Key Partners & Stakeholders
Stop, Stay & Spend Connect With Identity	Greening The Gateways	1D	<b>Gateway Sculptural Piece</b>	Gateway sculptural piece at north end of King St/Vine St intersection that ties in with town place theme and collaboration with Arowhenua.	Medium	TDC Land Transport Unit Arowhenua
Live, Work & Play	Greening The Gateways	1E	<b>Local Grid Upgrade</b>	Investigate grid requirements for charging facilities. Lobby Alpine Energy to upgrade local grid as required or investigate alternative solar options.	Medium	Alpine Energy
Live, Work & Play Stop, Stay & Spend	Greening The Gateways	1F	<b>Charging Facilities</b>	Installation of public e-bike and e-vehicle charging stations at suitable locations within the township. Potentially will be limited by local power supply limitations.	Medium	TDC Land Transport Unit Alpine Energy Property Owners
Stop, Stay & Spend Connect With Identity	Greening The Gateways	1G	<b>Selling The Ward</b>	Leverage place theme to update content on existing marketing platforms including Venture Timaru, and The Magpie. Investigate other suitable medias to promote Temuka Ward including Winchester (could include 'virtual' food trails,camping and events like Winchester A&P show.)	Medium	Venture Timaru
Live, Work & Play Stop, Stay & Spend Connect With Identity	Connect Vine St to King St	2C	<b>Connection - Play Trail.</b>	Initially temporary themed play and challenge trail within the heart of the town centre. This trail should focus on a link from Vine St, across King St, to Commerce St.	Small	TDC Parks Unit
Live, Work & Play Stop, Stay & Spend Connect With Identity	Connect Vine St to King St	2D	<b>Connection - Shared Space/ Laneway - Concept Design.</b>	Concept design of a shared space for sitting, gathering, and playing along this connection through to the main street. May involve assessing developments options for the building at 85/81 King St currently owned by TDC. Design may include resurfacing shared space, street furniture, lighting, planting to inject greenery into the town centre, and play elements alongside potential alterations to the TDC owned historic building at 89 King St to better open up to this space. Concept design options + costings to help guide future investment.	Medium	TDC Land Transport Unit



# Works Programme. 4-6 Year Priority.

\*Project Size Key:  
Small \$0 - \$10,000  
Medium \$10,000 - \$100,000  
Large \$100,000+

Relevant Objective	Relevant Key Move	Project No.	Project Name	Description	Project Size*	Key Partners & Stakeholders
Live, Work & Play	Staying In The Centre	3E	<b>Safe Crossing Investigation</b>	An initial study to address the current severance issues created by SH1 and the railway. What is feasible and what steps need to be taken to implement? Could test programmes such as a pedestrian cycle trail, planting initiatives, residential development, more numerous and safer road crossings, and moving the inland port. May look more closely at school travel routes.	Medium	TDC Land Transport Unit Transport Agency Waka Kotahi Kiwirail
Live, Work & Play	Staying In The Centre	3F	<b>Retirement In The Centre - Residential Study</b>	Commission bulk and location testing to explore acquisition and divestment opportunities for TDC to add more residential density (including aged care/senior living) in and around the town centre. Includes exploring feasibility of additional low-income senior living to address current demand, addressing stormwater options for Gunnion Square, and developing parking strategies to support density.	Medium	TDC Property Unit TDC Planning Unit
Live, Work & Play	Staying In The Centre	3G	<b>Town Centre Basketball Court</b>	Installation of a public basketball court. Location considered to note detract from retail uses in the urban core defined in the Town Centre Living Investigation. Could combine with the bike skills/pump track at the end of Commerce St.	Medium	
Live, Work & Play Stop, Stay & Spend	Connect Town to Trails	4J	<b>Railway Crossing</b>	Improve and widen footpath leading to rail crossing at end of Commerce St and investigate options to further improve rail crossing with Kiwirail.	Medium	TDC Parks Unit Kiwi Rail
Live, Work & Play Stop, Stay & Spend	Connect Town to Trails	4K	<b>Temuka Trails - State Highway 1 Crossing</b>	Design and install a safe crossing over State Highway 1 near Temuka township to provide access for active modes to area west of the town centre and address severance issues.	Medium	TDC Land Transport Unit Waka Kotahi
Live, Work & Play Stop, Stay & Spend Connect With Identity	Connect Town to Trails	4L	<b>South Canterbury Trails - Website &amp; App</b>	Put trails onto an app and website to identify them, promote trails and cycle tourism in the district, allow to track the amount of users, and also offer some promotional give aways.	Medium	TDC Land Transport Unit Geraldine Community Board Pleasant Point Community Board Venture Timaru

# Works Programme. 4-6 Year Priority.

\*Project Size Key:  
Small \$0 - \$10,000  
Medium \$10,000 - \$100,000  
Large \$100,000+

Relevant Objective	Relevant Key Move	Project No.	Project Name	Description	Project Size*	Key Partners & Stakeholders
Live, Work & Play Stop, Stay & Spend Connect With Identity	Connect Town to Trails	4M	<b>South Canterbury Trails - Temuka to Pleasant Point</b>	Install wayfinding signage as per the South Canterbury trails brand to enhance existing trail.	Medium	Pleasant Point Community Board TDC Land Transport Unit
Live, Work & Play Stop, Stay & Spend Connect With Identity	Connect Town to Trails	4N	<b>South Canterbury Trails - Temuka to Timaru</b>	Following the feasibility study, implement trail from Temuka to Timaru (via Arowhenua Marae?). Includes wayfinding signage as per the South Canterbury trails brand.	Large	TDC Land Transport Unit

# Works Programme. 7-10 Year Priority.

\*Project Size Key:  
Small \$0 - \$10,000  
Medium \$10,000 - \$100,000  
Large \$100,000+

Relevant Objective	Relevant Key Move	Project No.	Project Name	Description	Project Size*	Key Partners & Stakeholders
Live, Work & Play Stop, Stay & Spend	Connect Vine St to King St	2E	<b>Public Toilets Review &amp; Refresh</b>	Review & refresh of the existing public toilets including new fittings and painting exterior/interior.	Medium	TDC Property Unit
Live, Work & Play Stop, Stay & Spend Connect With Identity	Connect Vine St to King St	2F	<b>Connection - Shared Space - Implementation.</b>	Implementation of the shared space project. May involve developing the building at 85/81 King St currently owned by TDC (with timeframes dependent on terms of lease).	Large	TDC Land Transport Unit TDC Property Unit
Live, Work & Play Connect With Identity	Staying In The Centre	3H	<b>Community Centre</b>	Following work testing community functions in untenanted buildings within the town centre, design and implement a consolidated community hub near the Library to provide amenity for urban living. This could combine healthcare services, community gathering space/town square, and also a playspace for intergenerational gathering.	Large	TDC Community Development Unit
Live, Work & Play Stop, Stay & Spend Connect With Identity	Connect Town to Trails	4O	<b>South Canterbury Trails - Temuka to Geraldine</b>	Following the feasibility study, implement trail from Temuka to Geraldine (via Winchester). Includes wayfinding signage as per the South Canterbury trails brand.	Large	Geraldine Community Board TDC Land Transport Unit

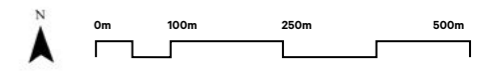


Projects.	
1A	Gateway Signage
1B	Vine St Planting
1D	Gateway Sculptural Piece
1F*	Charging Facilities
2A	Connection - Enhancement
2B	Main Street Vibrancy
2C	Connection - Play Trail
2D	Connection - Shared Space/Laneway Concept Design
2E	Public Toilets Review & Refresh
2F	Connection- Shared Space/Laneway Implementation
3B*	Community Gardens
3C*	Town Centre Living - Design Investigation & Plan Change Submission
3G*	Town Centre Basketball Court
4A	Temuka Trails - Existing Conditions Assessment
4B*	Temuka Trails - Wayfinding
4C*	Temuka Trails - Domain Family Cycle Track
4D*	Temuka Trails - Skills Park
4E*	Temuka Trails - Winchester Via McNairs Road
4F	State Highway 1 Crossing By Temuka River
4J	Railway Crossing
4K*	Temuka Trails - State Highway 1 Crossing

*Note map identifies spatial projects within Temuka township only.*

Legend.	
XX	1-3 Year Priority
XX	4-6 Year Priority
XX	7-10 Year Priority
*	Location indicative only.

# Temuka Community Board Projects Map.



**Appendix.**

# Temuka, Lets Get Ahead.

## Strategy On A Page.

The Temuka Community Board are developing a Strategic Plan for Temuka and the surrounding area including Winchester.

The Strategic Plan helps to bridge the gap between a shared Vision and Objectives for Temuka and a range of projects that Council, the Community Board, and members of the wider commercial and not for profit community could undertake to make a difference.

### Objectives.



#### Live, Work & Play.

- promote residential growth
- promote business growth
- enable residents to stay for a life time
- enable families to stay together
- improve facilities and amenities for residents

#### Stop, Stay, Spend.

- encourage visitors to stop, stay and spend
- improve connections with the wider district



#### Connect With Identity.

- create a clean, fresh, attractive environment
- create a strong identity/ point of difference
- create a special relationship with Te Rūnanga o Arowhenua

### Key Moves.



#### Greening The Gateways.

Planting, simple building enhancements, and place branding developed in collaboration with Rūnanga and local entities could address the look and feel of Temuka and first impressions of it's identity. New signage at key gateway points, rest stops, and parking facilities around the periphery of the township could also help enhance visitor's experience of the area, with Vine St improvements being the priority focus.



#### Connect Vine St & King St.

Creating an inviting mid block linkage between carparking on Vine St through to King St, with shared spaces along its length, could establish a concentration of activity, play, art, and pop up attractions within the town. It would help connect both locals and visitors alike with a more vibrant town centre.



#### Staying In The Centre.

Compact living closer to the town centre could help enhance connections between King Street and the eastern suburbs. It might also provide much needed affordable and diverse housing options, with downsizing potential and proximity to convenience and care facilities for ageing in place.



#### Connect Town To Trails.

Connecting the town to nearby rivers with walking and cycling trails could enhance recreational opportunities and draw visitors into town. This move could tie into existing plans to promote and provide District cycling infrastructure in South Canterbury to ensure Temuka reaps the benefits as this exciting network develops.



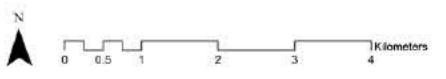
**Legend.**

- State highway
- Roads
- Temuka Community Board
- Cycle trails
- Walking tracks

*Specific projects identified in the Off-Road Walking and Biking Strategy 2012-2032.*

*Indicative rural linkages:*

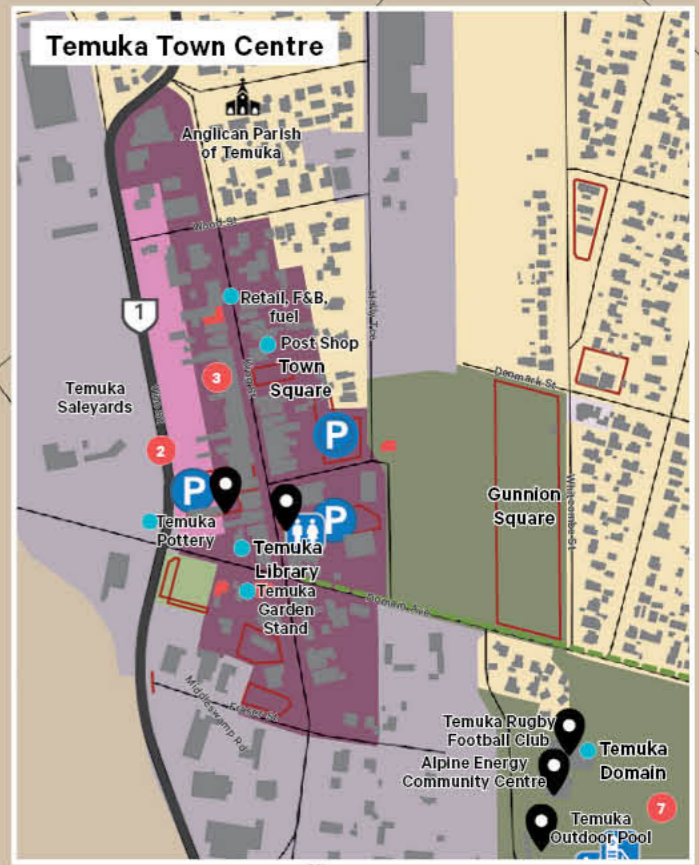
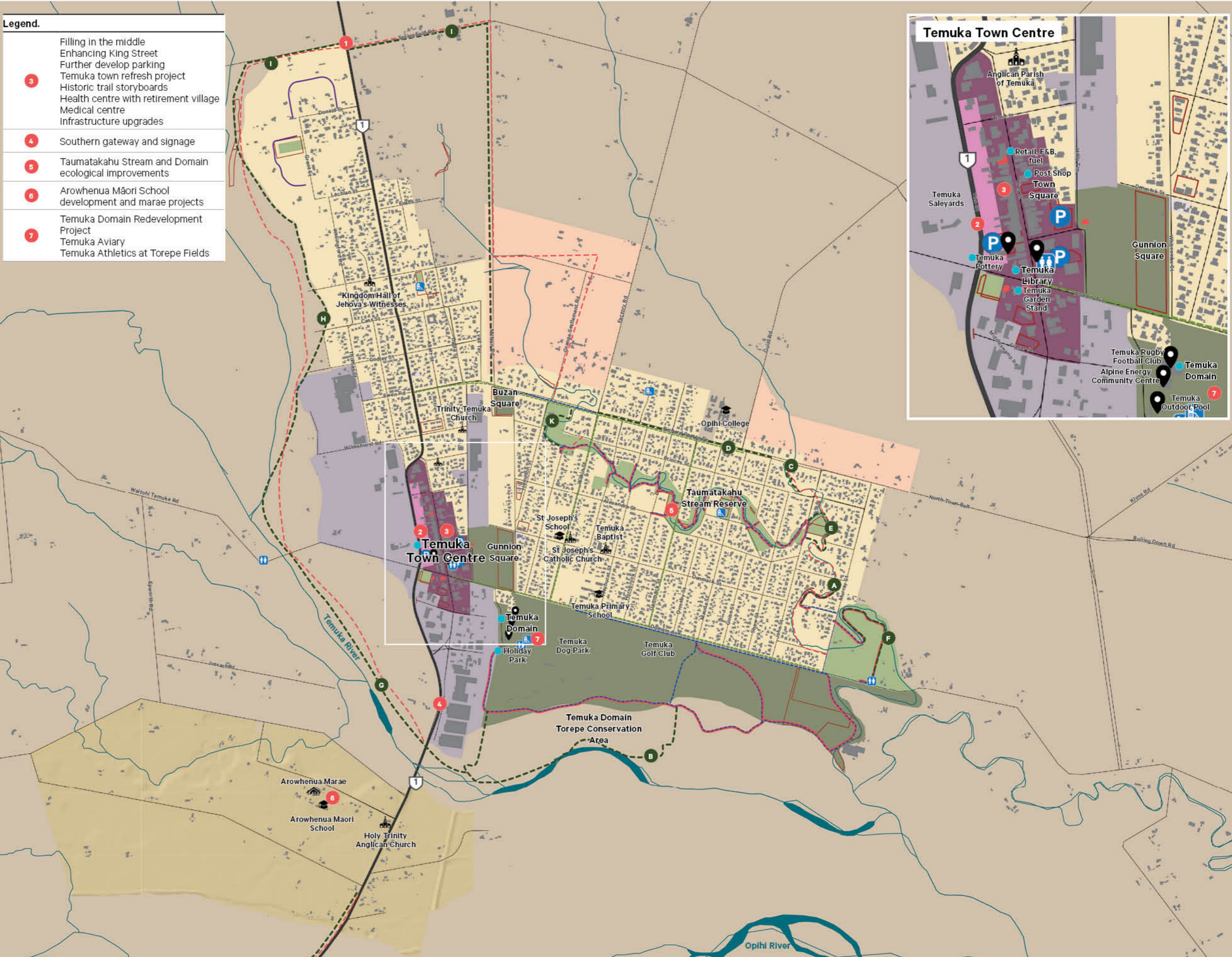
- A Linkage from Timaru to Pleasant Point
- B Linkage from Pleasant Point to Cave
- C Linkage from Timaru to Temuka
- D Linkage from Temuka to Geraldine
- E Linkage from Pleasant Point to Temuka
- F Linkage from Geraldine to Arundel
- G Linkage from Timaru to Pareora (not shown)
- H Linkage from Timaru to Brassell's Bridge (not shown)
- I Linkage from Orari to Rangitata



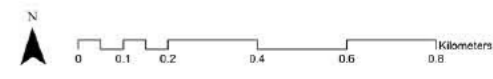
# Temuka Context Plan.

- Legend.**
- Draft District Plan.*
- General Industrial Zone
  - Town Centre Zone
  - Large Format Retail Zone
  - General Residential Zone
  - Rural Lifestyle Zone
  - General Rural Zone
  - Sport and Active Recreation Zone
  - Open Space Zone
  - Māori Purpose Zone
  - Neighbourhood Centre Zone
- Other features (existing).*
- Roads
  - Rivers
  - Cycle trails
  - Walking trails
  - Council owned land
  - Building footprints
  - Heritage building
  - Parking
  - Public toilets
  - Playground
  - Visitor attractors
- Specific projects identified in the Off-Road Walking and Biking Strategy 2012-2032.*
- Proposed tracks (developer cost)
  - A. Taumatakahu Stream (Bridge St - Rawhiti St)
  - B. Temuka Domain (Torepe field link)
  - C. Taumatakahu Stream (Richard Pearce Dr - Princess St)
  - D. Richard Pearce Drive (Wilkin St - Gulse St N)
  - E. Taumatakahu Stream (John St loop)
  - F. Taumatakahu Stream (Murray St - Milford-Clandeboye Rd)
  - G. Temuka River (Torepe fields - Waitohi Temuka Rd)
  - H. Temuka River (Waitohi Temuka Rd - Oxford Crossing Rd)
  - I. Oxford Crossing Rd - Richard Pearce Dr)
  - J. Temuka North Residential area (not shown)
  - K. Studholme St-Richard Pearce Dr.
- Proposed connections identified in the Timaru District Active Transport Strategy.*
- Proposed on-road cycle lane
  - Proposed walking connections
- Proposed projects*
- 1 Northern gateway and signage
  - 2 Refront and revitalise Vine Street

- Legend.**
- 3 Filling in the middle  
Enhancing King Street  
Further develop parking  
Temuka town refresh project  
Historic trail storyboards  
Health centre with retirement village  
Medical centre  
Infrastructure upgrades
  - 4 Southern gateway and signage
  - 5 Taumatakahu Stream and Domain ecological improvements
  - 6 Arowhenua Māori School development and marae projects
  - 7 Temuka Domain Redevelopment Project  
Temuka Aviary  
Temuka Athletics at Torepe Fields



# Temuka Township Plan.







**Timaru District Council**

PO Box 522, Timaru 7940

**T** (03) 687 7200

**E** enquiry@timdc.govt.nz

Temuka Library/Service Centre

72-74 King Street, Temuka

**T** (03) 687 9336

[www.timaru.govt.nz](http://www.timaru.govt.nz)