

TIMARU DISTRICT SIGNIFICANT NATURAL AREAS

ROADSIDE SNA SURVEY 2022

SNA 929

Road: Landsborough Road

Side of Road: north

Map Reference (NZTM): 1450229E-5083190N

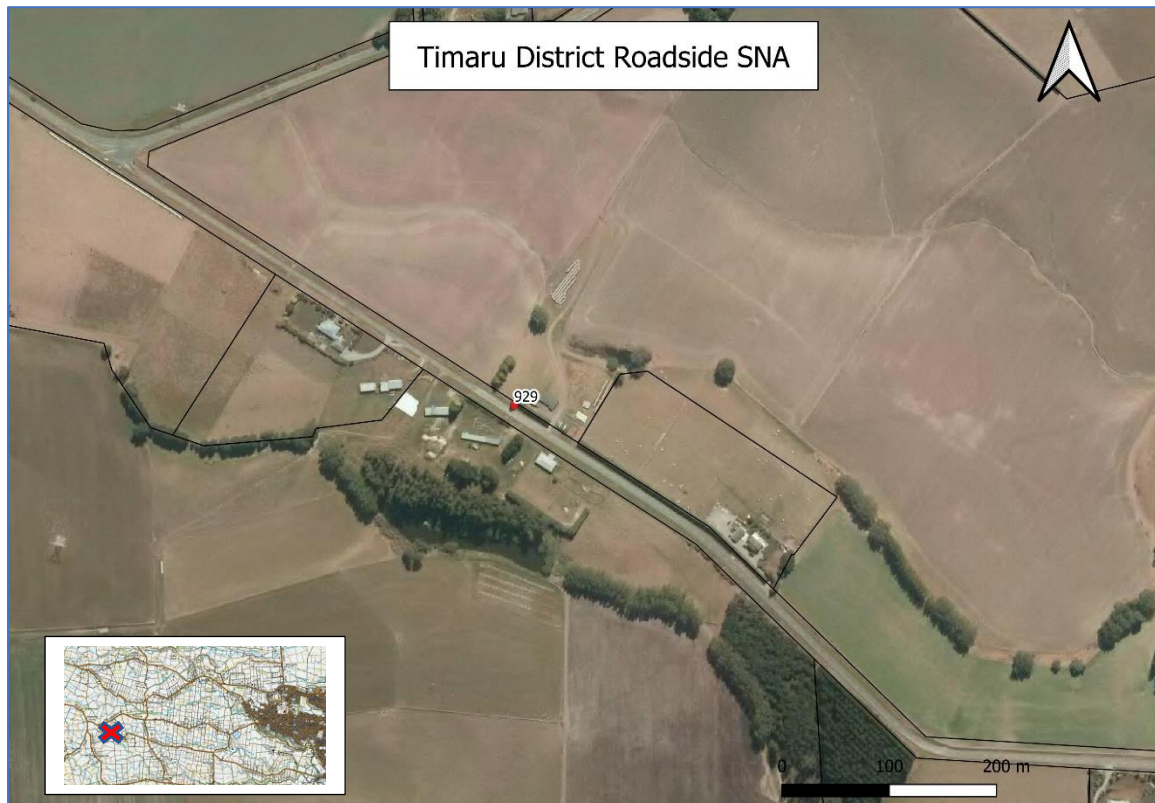
Ecological District: Makikihi

Nearest Locality: Claremont

Adjacent Property: 24850-07000

Size: 5m²

Level IV Land Environment: N3.1b



Description:

A large single-trunk ti/cabbage tree (*Cordyline australis*) in rank (un-grazed) exotic grassland, at the west end of a tall roadside hedge. The cabbage tree is growing near to a road culvert.

Notable Species:

No locally-uncommon, or listed 'at risk' or 'threatened' species were observed.



Significance Assessment:

Assessment against Canterbury Regional Policy Statement Appendix 3 criteria:

Criteria	Rank	Assessment
Representativeness	M	1. A degraded example of indigenous vegetation, representing all that remains in this part of the ecological district.
Rarity/Distinctiveness	H	3. Indigenous vegetation/habitat that has been reduced to less than 20% of its former extent in the ecological district.
Diversity and Pattern	L	A very low diversity of indigenous ecosystems, habitat types, or taxa.
Ecological Context	L	Vegetation/habitat that does not provide or contribute to an important ecological linkage or buffering, and does not provide important habitat for indigenous species.

Assessment against Timaru District Plan Part B criteria:

Primary Criteria	Rank	Assessment
Representativeness	M	A depleted example of indigenous vegetation which is typical of that remaining in the ecological district.
Rarity	L/M	The area supports an indigenous species that is now uncommon in the ecological district.
Diversity and Pattern	L/M	A substantially depleted indigenous plant community.

Distinctiveness/Special Features	L	The area does not support species at distributional limits, intact sequences, or provide important fauna habitat.
Other Criteria		
Size/Shape	L	The area is small and poorly buffered.
Connectivity	L	The area is isolated from other areas of indigenous vegetation/habitat and does not form an important part of a network of fauna habitat.
Sustainability	M	The area is modified, but the indigenous vegetation (cabbage tree) is resilient.

The area is significant when assessed against the Canterbury Regional Policy Statement criteria, principally because it supports indigenous vegetation that has been reduced to less than 20% of its former extent in the ecological district.

Condition and Management:

The cabbage tree is in good condition. The tree should be protected from grazing and herbicide.