

**TIMARU DISTRICT COUNCIL**  
**HISTORIC HERITAGE ITEM RECORD FORM**

---

**HERITAGE ITEM NAME** 'Baile-Chnuick' / former Sutherlands' Homestead

**ADDRESS** 18 Sutherlands Road, Sutherlands

**PHOTOGRAPH**



(HNZPT)

**FORMER DISTRICT PLAN ITEM No.** No. 69      **HNZ LIST No. & CATEGORY** 2006 / 2  
(at time of assessment)

**LEGAL DESCRIPTION** Lot 2 DP 80753

**VALUATION NUMBER** 2482008804

**DATE OF CONSTRUCTION** 1875

**ARCHITECT/DESIGNER/  
BUILDER** Alexander Sutherland, owner/builder?

**STYLE** Colonial vernacular

**PHYSICAL DESCRIPTION**

Single-storey north-facing house with irregular rectangular footprint and gabled roof forms. Double gable roof with cross-gabled bay and lean-to at rear. Coursed, rough-hewn stone walls; flared roof forms veranda carried on timber posts. Double-hung sash windows. Name plaque with ashlar stone surround. Brick chimneys, weatherboard infill where lean-to roof has been raised.

**MATERIALS/STRUCTURE**

Limestone, timber, brick and corrugated iron.

**ADDITIONS/ALTERATIONS**

Lean-to addition; increased in height (date unknown).

**SETTING**

The house stands on the west side of Sutherlands Road, south of its intersection with the Pleasant Point-Cave Highway. The intersection is known as Sutherlands Corner. The former Sutherlands School (heritage item # 70) and the Sutherlands War Memorial beside it are located to the west of the house overlooking the highway. The extent of setting is limited to the immediate garden setting of the farmhouse, rather than the land parcel as a whole.

## **HISTORY**

The homestead was built for Alexander 'Sandy' Sutherland (1832-1917), who emigrated from Scotland to New Zealand, with his wife Catherine and two children, in December 1862. The family settled in Sutherlands in c.1868 and initially lived in a sod house. It was still extant at the turn of the 20<sup>th</sup> century. The stone and lime used to build the Sutherlands' second house were sourced on the property. Alexander was a member of the local school committee and he and Katherine (nee McKenzie, died 1925) were members of the Presbyterian church and had six children who survived to adulthood. Both the locality, local railway station, and road were named for the family. After Alexander Sutherland's death the farm was taken over by his son, also called Alexander. Baile-Chnuick is said to mean the house on the hill. The house remains in residential use.

## **HISTORICAL AND SOCIAL SIGNIFICANCE**

The former Sutherlands' homestead has historical significance for its association with the Sutherland family and the colonial development of farming in the area. Alexander Sutherland was said to be the first man to plough at Opawa, Mount Nessing and Albury stations and 'the first to reap grain in the Fairlie district with a Saunder's side-delivery' (*Cyclopedia of NZ*, p. 944).

## **CULTURAL AND SPIRITUAL SIGNIFICANCE**

The former Sutherlands' homestead has cultural value as a demonstration of the way of life of the farming families who have resided in the dwelling since its construction.

## **ARCHITECTURAL AND AESTHETIC SIGNIFICANCE**

The former Sutherlands' homestead has architectural significance as a colonial vernacular dwelling with a good level of external authenticity. The designer is currently unknown.

## **TECHNOLOGICAL AND CRAFTSMANSHIP SIGNIFICANCE**

The former Sutherlands' homestead has technological and craftsmanship significance for its stone masonry construction and detailing. Timaru stonemasons Messrs McBride and Walker have been mentioned in conjunction with the house and lean-to respectively.

## **CONTEXTUAL SIGNIFICANCE**

The former Sutherlands' homestead has contextual value as a historic feature within the rural landscape of Sutherlands. The homestead is related, historically and physically, with the nearby former Sutherlands School (heritage item # 70) and is one of a large number of limestone buildings and structures in this part of the Timaru district that were erected in the 1870s and 1880s.

## **ARCHAEOLOGICAL AND SCIENTIFIC SIGNIFICANCE**

As the homestead pre-dates 1900 its site has potential archaeological significance relating to the structure's construction, earlier building work on the property and the development of pastoralism in the Tengawai River valley.

## **SUMMARY OF HERITAGE SIGNIFICANCE**

'Baile-Chnuick', the former Sutherlands' homestead, has overall heritage significance to Sutherlands and Timaru district as a whole. The house has historical significance for its association with the Sutherland family and cultural value as a demonstration of the way of life of its former residents. Sutherlands' homestead has architectural significance as a colonial vernacular dwelling and technological and craftsmanship significance for its masonry construction using locally quarried limestone. The former Sutherlands' homestead has

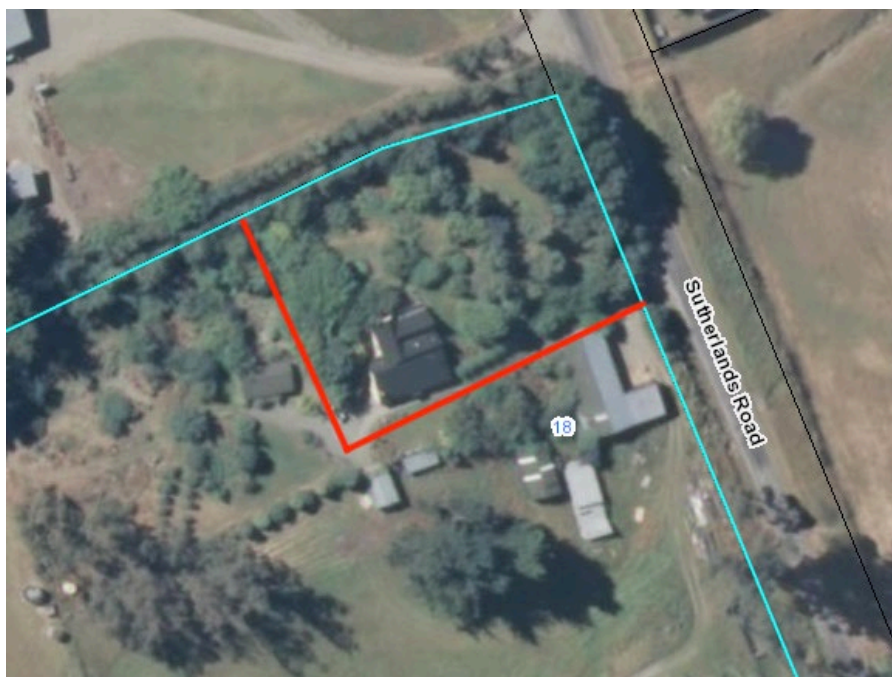
contextual value as a local historic feature and in relation to other scheduled heritage items in the area. The site of the homestead has potential archaeological significance in view of the dwelling's pre-1900 date of construction.

## HERITAGE CATEGORY

B

## REFERENCES

- *Timaru Herald* 25 May 1866, p. 2; 12 February 1870, p. 2; 29 January 1877, p. 4; 19 August 1885, p. 3; 24 October 1900, p. 2; 14 September 1908, p. 5; 31 December 1917, p. 4; 18 January 1918, p. 5.
- *Press* 30 April 1935, p. 6.
- *Cyclopedia of New Zealand – Canterbury Provincial District* Christchurch, 1903; available online.
- <http://www.heritage.org.nz/the-list/details/2006>
- <https://www.youtube.com/watch?v=OV2Dt8yibjE>



Extent of setting, limited to immediate environs of farmhouse, 18 Sutherlands Road, Sutherlands.



Land parcel as a whole, house marked by star.



HNZPT.