

## FINANCIAL CONTRIBUTION

### Introduction

The Financial Contributions ~~e~~ eChapter contains district-wide provisions that cover the situations where the Council will take financial contributions for development.

Financial contributions are contributions of money and/or land that councils can require from developers as a resource consent condition or permitted activity standard under the RMA. Financial contributions can only be taken when the purpose of the contribution is specified in a ~~D~~district ~~P~~plan and the level of the contribution is determined in accordance with the plan.

This chapter should be read in conjunction with APP7 Financial Contribution, which contains additional detail on why, when and how financial contributions are required and calculated.<sup>1</sup>

The Financial Contribution Chapter rules apply in conjunction with the Council's Financial Contributions Policy, which is in the Revenue and Finance Policy and part of the Council's Long-Term Plan. The Financial Contributions Policy provides regular (triennial) updates on the Council's growth capex intentions, detail and justification on the proportional allocation of this funding stream, as well as separately identifying the activities and funding allocations – as required by s-106 of the Local Government Act 2002.<sup>2</sup>

### Objectives

#### FC-O1 Funding

Timaru District's infrastructure, open space and recreation facilities are funded to meet the demands generated by subdivision, land use and development and to ensure subdivision, land use and development<sup>3</sup> does not compromise the quality of service provided to existing users.

#### FC-O2 Adverse environmental effects

Development contributes fairly and equitably towards the costs of offsetting or compensating adverse effects on the environment that are not practicable to avoid, remedy or mitigate.

### Policies

#### FC-P1 Taking of financial contributions

Financial contributions shall be in the form of cash or land or a combination of these and will be applied in a fair and equitable manner that:

1. is financially transparent; and
2. is complementary to the Council's other financial management policies; and
3. takes into account any costs incurred in taking, holding and allocating the financial contributions; and
4. is spent within a timely manner or in accordance with an infrastructure development strategy or financial contributions policy;<sup>4</sup> and
5. is spent in the locality it was collected, unless it is needed to provide a broader community or district wide service.

<sup>1</sup> Rooney Holdings Limited [174.62], GJH Rooney [191.62], Rooney Group Limited [249.62], Rooney Farms Limite [250.62], Rooney Earthmoving Limited [251.62], Timaru Developments Limited [252.62]

<sup>2</sup> Rooney Holdings Limited [174.62], GJH Rooney [191.62], Rooney Group Limited [249.62], Rooney Farms Limite [250.62], Rooney Earthmoving Limited [251.62], Timaru Developments Limited [252.62]

<sup>3</sup> TDC [42.43]

<sup>4</sup> Kāinga Ora [229.55], [229.56]

<b>FC-P2</b>	<b>Financial contributions for infrastructure and facilities</b>
Financial contributions will be used to <u>mitigate the adverse effects of new and intensified development on infrastructure and</u> <sup>5</sup> meet the additional needs for public infrastructure and facilities that arise from the activity and shall include financial contributions taken for:	
<ol style="list-style-type: none"> <li>1. roading; <u>and</u></li> <li>2. streetscape improvements; <u>and</u></li> <li>3. shared pathways, cycleways and walkways; <u>and</u></li> <li>4. vehicle parking; <u>and</u></li> <li>5. EV charging spaces; <u>and</u></li> <li>6. service lanes; <u>and</u></li> <li>7. water supply; <u>and</u></li> <li>8. wastewater, including trade waste; <u>and</u></li> <li>9. stormwater; <u>and</u></li> <li>10. parks, reserves and open spaces; <u>and</u></li> <li>11. recreation facilities; <u>and</u></li> <li>12. community facilities; <u>and</u></li> <li>13. planting of indigenous vegetation.</li> </ol>	
<b>FC-P3</b>	<b>Land contributions</b>
Where land is provided by way of a financial contribution it shall be suitable for the intended use and the community to be served.	
<b>FC-P4</b>	<b>Financial contributions for adverse environmental effects</b>
Financial contributions shall be used to avoid, remedy or mitigate adverse effects on the natural and physical environment which would otherwise be created by new or intensified development. <sup>6</sup>	

## Rules

**Note:** Activities not listed in the rules of this chapter are classified as a permitted under this chapter. For certain activities, consent may be required by rules in more than one chapter in the District Plan. Unless expressly stated otherwise by a rule, consent is required under each of those rules. The steps plan users should take to determine what rules apply to any activity, and the status of that activity, are provided in Part 1, HPW — How the Plan Works - General Approach.

<b>FC-R1</b>	<b>An additional residential unit or visitor accommodation activity not in a <u>Ddevelopment Area</u></b>	
<b>All zones not in a <u>Ddevelopment Area</u></b>	<b>Activity status: Permitted</b>  <b>Where:</b>  <b>PER-1</b> A financial contribution has been paid for open space and recreation purposes <u>as set out in a certificate provided by the Council, calculated</u> <sup>7</sup> in accordance with APP7 - Financial Contribution; <u>or</u>	<b>Activity status when compliance not achieved: Restricted Discretionary</b>  <b>Matters of discretion are restricted to:</b> <ol style="list-style-type: none"> <li>1. <del>The amount of the financial contribution</del> <u>the adverse effects on infrastructure and the environment,</u><sup>9</sup> having regard to the following matters:</li> </ol>

<sup>5</sup> Kāinga Ora [229.55], [229.56], Rooney Holdings Limited [174.62], GJH Rooney [191.62], Rooney Group Limited [249.62], Rooney Farms Limited [250.62], Rooney Earthmoving Limited [251.62], Timaru Developments Limited [252.62]

<sup>6</sup> Kāinga Ora [229.55], [229.56]

<sup>7</sup> Kāinga Ora [229.55], [229.56]

<sup>9</sup> Kāinga Ora [229.55], [229.56]

**PER-2**

The certificate issued by Council, calculated in accordance with APP7 – Financial Contribution confirms that no financial contribution is payable.<sup>8</sup>

- a. ~~The~~ purpose of the contribution and any matter in APP7 - Financial Contribution~~;~~ and
- b. ~~The~~ extent to which the proposed development is a replacement or modification of existing development on the site, which was of a greater or similar intensity and scale~~;~~ and
- c. ~~The~~ extent to which the proposal will lead to the enhancement of the natural and physical environment by:
  - i. protecting or enhancing amenities, habitats, ecosystems, landscape features, archaeological sites, cultural values or historic heritage features~~;~~ and
  - ii. mitigating, reducing or avoiding land use activity or subdivision impacts on sensitive parts of the natural or physical environment~~;~~ and
  - iii. giving public access to esplanade areas, areas of indigenous vegetation or habitats, historic heritage features or natural landscape features~~;~~ and
  - iv. creating open spaces, landscaping, recreation areas or facilities or amenity areas additional to those required by the District Plan~~;~~ and
- d. ~~The~~ extent to which the developer is creating or retaining a natural or physical resource to be used for any of the purposes in (c) beyond that required to meet District Plan or other statutory requirements~~;~~ and
- e. ~~The~~ extent with which previous provision has been made for open space and recreation area purposes on an earlier development of the same land~~;~~ and

<sup>8</sup> Kāinga Ora [229.55], [229.56]  
Page 3 of 7  
Base Plan: 21-Sep-2022

		<p>f. <del>The</del> the extent to which the proposal will create a demand on open space and recreation areas; <del>and</del></p> <p>g. <del>The</del> the extent to which it is appropriate to take a financial contribution at a later date in a further stage of a project, secured by way of consent notice or legal agreement.<sup>10</sup></p>
<b>FC-R2</b>	<b>New <u>non-residential buildings</u> or additions to <u>non-residential commercial</u><sup>11</sup> buildings with an increase in floor area over 50m<sup>2</sup>, or a new residential unit <u>or visitor accommodation activity</u><sup>12</sup></b>	
<b>All zones in a <del>D</del>development <del>A</del>area</b>	<p><b>Activity status: <u>Controlled Permitted</u><sup>13</sup></b></p> <p><b><u>Where:</u></b></p> <p><b><u>PER-1</u></b>  <u>A financial contribution has been paid as set out in a certificate provided by the Council, calculated in accordance with APP7 - Financial Contribution;<sup>14</sup> or</u></p> <p><b><u>PER-2</u></b>  <u>The certificate issued by Council, calculated in accordance with APP7 – Financial Contribution confirms that no financial contribution is payable.<sup>15</sup></u></p>	<p><b>Activity status when compliance not achieved: <u>Not applicable Restricted Discretionary</u><sup>16</sup></b></p> <p><b><u>Matters of Control discretion are restricted to:</u></b></p> <ol style="list-style-type: none"> <li>1. <del>The</del> amount of the financial contribution <del>The</del> the adverse effects on infrastructure and the environment,<sup>17</sup> having regard to the following matters: <ol style="list-style-type: none"> <li>a. <del>The</del> the purpose of the contribution and any matter in APP7 - Financial Contribution; <del>and</del></li> <li>b. <del>The</del> the benefit that may accrue to other properties or the public as a result of the financial contribution; <del>and</del></li> <li>c. <del>The</del> the extent to which the proposed development is a replacement or modification of existing development on the site, which was of a greater or similar intensity and scale; <del>and</del></li> <li>d. <del>The</del> the extent to which the proposal will lead to the enhancement of the natural and physical environment by: <ol style="list-style-type: none"> <li>i. protecting or enhancing amenities, habitats,</li> </ol> </li> </ol> </li> </ol>

<sup>10</sup> Kāinga Ora [229.55], [229.56]<sup>11</sup> Kāinga Ora [229.55], [229.56]<sup>12</sup> Kāinga Ora [229.55], [229.56]<sup>13</sup> Kāinga Ora [229.55], [229.56]<sup>14</sup> Kāinga Ora [229.55], [229.56]<sup>15</sup> Kāinga Ora [229.55], [229.56]<sup>16</sup> Kāinga Ora [229.55], [229.56]<sup>17</sup> Kāinga Ora [229.55], [229.56]



- ecosystems, landscape features, archaeological sites, cultural values or historic heritage features~~;~~ and
- ii. mitigating, reducing or avoiding land use activity or subdivision impacts on sensitive parts of the natural or physical environment~~;~~ and
  - iii. giving public access to esplanade areas, areas of indigenous vegetation or habitats, historic heritage features or natural landscape features~~;~~ and
  - iv. creating open spaces, landscaping, recreation areas or facilities or amenity areas additional to those required by the District Plan~~;~~ and
- e. ~~The~~ the extent to which the developer is creating or retaining a natural or physical resource to be used for any of the purposes in (1.d) beyond that required to meet District Plan or other statutory requirements~~;~~ and
- f. ~~The~~ the extent with which previous provision has been made for open space and recreation area purposes on an earlier development of the same land~~;~~ and
- g. ~~The~~ the extent to which the proposal will create a demand on open space and recreation areas and whether the amount of the contribution should be reduced accordingly~~;~~ and
- h. ~~The~~ the extent to which it is appropriate to take a financial contribution at a later date in a further stage of a project, secured by way of consent notice or legal agreement~~;~~ and
- i. ~~Whether~~ whether there is the provision for ongoing and secured public access that is considered to be

part of a strategic network over private land where it otherwise would not occur.<sup>19</sup>

<b>FC-R3</b>	<b>Subdivision</b>	
<b>All zones</b>	<p><b>Activity status: <del>Controlled</del> <u>Permitted</u></b><sup>20</sup></p> <p><b><u>Where:</u></b></p> <p><b><u>PER-1</u></b>  <u>A financial contribution has been paid as set out in a certificate provided by the Council, calculated in accordance with APP7 – Financial Contribution;</u><sup>21</sup> <u>or</u></p> <p><b><u>PER-2</u></b>  <u>The certificate issued by Council, calculated in accordance with APP7 – Financial Contribution confirms that no financial contribution is payable.</u><sup>22</sup></p>	<p><b>Activity status when compliance not achieved: <del>Not applicable</del> <u>Restricted Discretionary</u></b><sup>23</sup></p> <p><b><u>Matters of Control discretion are restricted to:</u></b></p> <ol style="list-style-type: none"> <li>1. <del>The amount of the financial contribution</del> <u>the adverse effects on infrastructure and the environment,</u><sup>24</sup> having regard to the following matters: <ol style="list-style-type: none"> <li>a. <del>The</del> <u>the</u> purpose of the contribution and any matter in APP7 - Financial Contribution;</li> <li>b. <del>The</del> <u>the</u> benefit that may accrue to other properties or the public as a result of the financial contribution;</li> <li>c. <del>The</del> <u>the</u> extent to which the proposed development is a replacement or modification of existing development on the site, which was of a greater or similar intensity and scale;</li> <li>d. <del>The</del> <u>the</u> extent to which the proposal will lead to the enhancement of the natural and physical environment by: <ol style="list-style-type: none"> <li>i. protecting or enhancing amenities, habitats, ecosystems, landscape features, archaeological sites, cultural values or heritage features;</li> <li>ii. mitigating, reducing or avoiding land use activity or subdivision impacts on sensitive parts of the natural or physical environment;</li> <li>iii. giving public access to esplanade areas, areas of indigenous vegetation or habitats, heritage features or natural landscape features;</li> </ol> </li> </ol> </li> </ol>

<sup>19</sup> Kāinga Ora [229.55], [229.56]

<sup>20</sup> Kāinga Ora [229.55], [229.56]

<sup>21</sup> Kāinga Ora [229.55], [229.56]

<sup>22</sup> Kāinga Ora [229.55], [229.56]

<sup>23</sup> Kāinga Ora [229.55], [229.56]

<sup>24</sup> Kāinga Ora [229.55], [229.56]

- |  |  |
|--|--|
|  | <p>iv. creating open spaces, landscaping, recreation areas or facilities or amenity areas additional to those required by the District Plan;</p> <p>e. <del>The</del> the extent to which the developer is creating or retaining a natural or physical resource to be used for any of the purposes in (1.d) beyond that required to meet District Plan or other statutory requirements;</p> <p>f. <del>The</del> the extent with which previous provision has been made for open space and recreation area purposes on an earlier development of the same land;</p> <p>g. <del>The</del> the extent to which the proposal will create a demand on open space and recreation areas and whether the amount of the contribution should be reduced accordingly.</p> <p>j. <del>The</del> the extent to which it is <u>appropriate to take a financial contribution at a later date in a further stage of a project, secured by way of consent notice or legal agreement.</u><sup>25</sup></p> <p>h. <del>Whether</del> whether there is the provision <u>for ongoing and secured public access that is considered to be part of a strategic network over private land where it otherwise would not occur.</u><sup>26</sup></p> |
|--|--|

<sup>25</sup> Kāinga Ora [229.55], [229.56]

<sup>26</sup> Kāinga Ora [229.55], [229.56]

## APP7 - FINANCIAL CONTRIBUTION

Advisory note: ~~The~~ Council's Financial Contributions Policy, which is in the Revenue and Finance Policy and part of the Council's Long-Term Plan contains additional information on financial contributions funding.<sup>1</sup>

### 1.0 Water, Stormwater, Wastewater and Roding

1. The following financial contributions are required for the purpose of avoiding any adverse effects of a development on Council's water supply, stormwater, wastewater systems or Council's road infrastructure/network and to avoid, remedy or mitigate adverse effects on the natural and physical environment.<sup>2</sup>
2. The financial contribution shall be payable when:
  - a. the proposed development is intending to connect to a Council owned or operated water supply, stormwater or wastewater system; and
  - b. ~~in respect of stormwater, the proposed discharge to the Council stormwater system does not comply with the requirements of the District Plan's Stormwater Management chapter; and~~<sup>3</sup>
  - c. additions or modifications to the existing water supply system, stormwater system or wastewater system are required to manage the expected adverse effects of development on that network; or
  - d. additional capacity has been created in the water supply system, stormwater system or wastewater system in anticipation of future development; or
  - e. a development will adversely affect any aspect of Council's road infrastructure/network to the extent that changes, modifications or strengthening is required to be made to comply with the District Plan, any relevant adopted Council road design manual, or expert technical advice.
3. The financial contribution shall be payable to ~~Timaru District~~ Council when:
  - a. for a subdivision, before a certificate under section 224 of the RMA is issued; and
  - b. for a building, before the building consent is issued; and
  - c. for an activity with no building, before the activity commences; and
  - d. for a building that does not need a building consent, before the building is occupied.
4. The financial contribution payable shall be:
  - a. ~~The~~ full actual cost of any new infrastructure<sup>4</sup> additions or modifications to the existing water supply system, stormwater system, wastewater system or road infrastructure/network that are required to mitigate the expected effects of the development minus the value of any benefit of those additions or modifications that will accrue to the public or other properties as determined by ~~Timaru District~~ Council, including as set out below under clauses 6, 7 and 8;<sup>5</sup> or
  - b. ~~Where~~ changes, additions<sup>6</sup> or modifications have been made to the existing water supply system, stormwater system, wastewater system or road infrastructure/network in anticipation

<sup>1</sup> Rooney Holdings Limited [174.63], GJH Rooney [191.63], Rooney Group Limited [249.63], Rooney Farms Limited [250.63], Rooney Earthmoving Limited [251.63], and Timaru Developments Limited [252.63]

<sup>2</sup> Kāinga Ora [229.55], [229.56] to give effect to new FC-P4

<sup>3</sup> Clause 10(2)(b) consequential amendment resulting from the revised stormwater chapter which requires a Council issued certificate to connect to the Council's network or obtain a resource consent

<sup>4</sup> TDC [42.68]

<sup>5</sup> Kāinga Ora [229.55], [229.56]

<sup>6</sup> TDC [42.68]

of future development, an equitable share of the cost of these changes/modifications as prescribed in Council's fees and charges and as set out below under clauses 6, 7 and 8,<sup>7</sup> unless otherwise agreed with Council.<sup>8</sup>

- i. ~~When~~ calculating the cost of the financial contributions payable under clause 4 (b), the Council will consider the matters set out under clauses 6, 7 and 8 and.<sup>8</sup>
  - a. ~~The~~ total cost of the changes/modifications divided by an equitable share of those costs having regard to the site's development potential as a percentage of the catchment, or the actual or potential demand from the activity for the service; and
  - b. ~~Any~~ part of the cost of any changes/modifications to the existing water supply system, stormwater system, wastewater system or road infrastructure/network that should be borne by Council or other parties, and whether the development benefits the present residents of the community or District to a degree that some or all the costs of the existing network need not be charged.
- c. ~~To~~ cover the increase in costs which will have taken place between the time the financial contribution is calculated and the time the contribution is payable, the financial contribution will be subject to:
  - i. the Statistics New Zealand Producer Price Index for Construction Outputs, in respect of financial contributions for wastewater, water and stormwater infrastructure; or
  - ii. the NZTA ~~Waka Kotahi~~ Construction Index for Rooding Contributions, in respect of financial contributions for road infrastructure.<sup>9</sup>
- d. ~~For~~ any costs associated with the following in relation to a and b, which arise due to the development:<sup>9</sup>
  - i. ~~Design~~, surveying and consenting;
  - ii. ~~Acquisition~~ of land;
  - iii. ~~Construction~~ of or changes to the water supply system, stormwater system, wastewater system;
  - iv. ~~Construction~~ roads, private ways, accessways, slip lanes, turning areas, splays footpaths/~~walkways~~, cycleways, shared pathways, streetscape improvements, parking, service lanes, median strips, berms, road gardens, fences, ~~lights~~, crossing, lights, traffic management devices and electronic/EV charging stations;<sup>10</sup>
  - v. ~~Signage~~;
  - vi. ~~Street~~ furniture; and
  - vii. ~~Compliance~~ with other acts or regulations.

5. The financial contribution shall be paid to ~~Timaru District~~ Council in the form of cash or land at the Council's discretion.

#### 6. Stormwater systems for urban areas<sup>11</sup>

- a. Where a connection to an existing stormwater drainage network utility system is not available to serve the subdivision or development the maximum amount of the financial contribution should be the full and actual cost of providing:
  - i. ~~A~~ system for the disposal of stormwater; and
  - ii. ~~Connections~~ between the reticulation in the subdivision or development and the existing stormwater drainage network utility system; and
  - iii. ~~All~~ necessary reticulation and control structures within the subdivision or development; and
  - iv. ~~A~~ stormwater connection for each allotment, site or building.

<sup>7</sup> Kāinga Ora [229.55], [229.56]

<sup>8</sup> Kāinga Ora [229.55], [229.56]

<sup>9</sup> TDC [42.68]

<sup>10</sup> Clause 16(2) to align APP7 with FC-P2

<sup>11</sup> Kāinga Ora [229.55], [229.56]

- b. When calculating the financial contribution and to avoid disproportionate costs falling on developers at the lower end of catchments a cost sharing system shall apply as set out below:
- i. ~~E~~each area affected by the need for a cost sharing arrangement will be defined and treated separately to determine the share of costs to be borne by subdividers. The Council's proposals for the basis of cost sharing will be made available to the subdividers in broad terms, i.e. rate of levy on defined areas, basis of adjustment and details of services proposed.
  - ii. ~~T~~he contribution is to be based on estimated costs of providing the services, the estimates to be prepared on the basis of present day costs and supported by detailed engineering plans and formal detailed costing procedures for each service in each catchment area; costs are to include design fees. The date of the estimates is to be stated.
  - iii. ~~T~~he contribution shall be allocated by spreading the estimated cost of each service for the catchment on an area basis over the land in that catchment and the contribution charged as it is subdivided. The result to be a levy per hectare for stormwater and main drains.
  - iv. ~~A~~lthough the contribution is to be calculated on an area basis, it shall be adjusted to allow for the direct benefit to be obtained by any one land owner. For example: the reticulation necessary in a subdivision is reduced considerably where a main drain goes right through that subdivision. In contrast the fringe areas do not receive such a benefit as the main drain comes only to the boundary. The method of adjustment is to be a deduction from the gross cost for the catchment of an estimate of the direct benefit pertaining throughout the catchment before determining the contribution per hectare.
  - v. ~~W~~here a subdivision is to receive a direct benefit the estimated amount is to be added back to the basic levy. The direct benefit received by any subdivision will reflect the projected load due to anticipated land use. This applies where a catchment has land which is zoned for different purposes. The direct benefit shall be calculated on the estimated cost of providing the necessary services for that subdivision ie a certain size drain.
  - vi. ~~T~~he contribution is to be applied on the basis of the catchment envisaged in the defined area referred to under Rule 6.b.i above, even if the final link for that subdivision is to services in another catchment. This provision is to ensure equity between different parts of the catchment.
  - vii. ~~T~~he contribution rate per hectare will be updated according to the most recently published quarterly figure of the Works Construction Cost Index (WCCI) to cover the increase in costs which will have taken place between the time the estimate is prepared and the subdivision approval given.
  - viii. ~~T~~he levied amount shall be made a condition of subdivisional approval. Payment to be required or a suitable bond entered into before the plan is sealed with such levy not subject to escalation during the period of approval.
  - ix. ~~W~~here agreements such as set out above exist they shall continue to be applied to further development within the specific catchment.
- c. Where an existing stormwater drainage network utility system is available to serve the subdivision or development the maximum amount of the financial contribution shall be the full and actual cost of:
- i. ~~A~~ll necessary reticulation in the subdivision or development and a stormwater connection for each allotment, site or building; and
  - ii. ~~C~~onnections between the reticulation in the subdivision or development and the existing stormwater network utility system; and
  - iii. ~~A~~ny upgrading of the existing network utility system that is required to provide for the expected effects of the subdivision, development or building on that utility system.
- d. At Gleniti (as set out in DEV2 - Gleniti Residential Development Area Plan) and Broughs

Gully (as set out in DEV1 Broughs Gully Development Area Plan), where open drainage channels are to be established and managed as stormwater swales (with or without associated detention dams) as part of a comprehensive stormwater management system, financial contribution shall be calculated in accordance with all of the above provisions.

### **Washdyke Industrial Expansion Area**

- e. For development and activities within the Washdyke Industrial ~~Expansion Area Outline~~ Development ~~Area~~ Plan (as set out in DEV3 Washdyke Development Area Plan) where stormwater utility services are able to be delivered to the development, a financial contribution in the form of cash, land or a combination of both shall be payable. The costs shall be calculated in accordance with clause 6(b). Council shall advise the amount of contribution at the time of development.
- f. This provision shall apply to all land use development in the Washdyke Industrial ~~Expansion Area Outline~~ Development ~~Area~~ Plan (as set out in DEV3 Washdyke Development Area Plan).

### **Performance standards for stormwater**

- g. Where a financial contribution is taken in the form of works or services the design criteria in the Council's Timaru Infrastructure Design Standards shall be complied with.

### **7. Sanitary Sewer System<sup>12</sup>**

- a. Where a connection to an existing sewerage system is not able to be made to the subdivision or development the maximum amount of the financial contribution shall be the full and actual cost of:
  - i. ~~P~~roviding a sanitary sewerage system for the subdivision, development, or building; and
  - ii. ~~A~~ll necessary reticulation within the subdivision or development for each allotment, site or building.
- b. Where a subdivision creates the need for a sanitary sewage system and adjoining land or buildings are discharging sanitary or trade wastes which are adversely affecting the environment then the sewage system constructed shall service both the land subject to the resource consent and the other lands.
- c. The cost of the sewage system in Rule 7.b shall be shared equitably between the lands served and calculated as follows:
  - i. Treatment plant capital and operating:
    - 1. In proportion to Biological Oxygen Demand (BOD)kg/day
    - 2. Suspended Solids (SS) kg/day
    - 3. Volume m<sup>3</sup> day
    - 4. All equally weighted
  - ii. Pumping installations capital and operating:
    - 1. In proportion to Volume m<sup>3</sup> /day
    - 2. Peak flow rate/sec
    - 3. All equally weighted
  - iii. Reticulation
    - 1. See criteria in Rule 6.b.

<sup>12</sup> Kāinga Ora [229.55], [229.56]



- d. Where a connection to an existing sanitary sewerage network utility is available to serve the subdivision or land use the maximum amount of the financial contribution shall be the full and actual cost of:

### **Washdyke Industrial Expansion Area**

- e. Development and activities within the Washdyke Industrial ~~Expansion Area Outline~~ Development ~~Area~~ Plan (as set out in DEV3 Washdyke Development Area Plan), where sanitary sewer utility services are able to be delivered to the development. All such development and activities are a controlled activity in respect to financial contributions. Sewer utility services are able to be delivered to the development. All such development and activities are a controlled activity in respect to financial contributions.
- f. A financial contribution in the form of cash, land or a combination of both shall be payable. The costs shall be calculated in accordance with Section 7.d of this ~~District~~ ~~Plan~~. Council shall advise the amount of contribution at the time of development.
- g. This section shall apply to all land use development in the Washdyke Industrial ~~Expansion Area Outline~~ Development ~~Area~~ Plan (as set out in DEV3 Washdyke Development Area Plan).

### **Performance standards for sanitary systems**

- h. Where a financial contribution is taken in the form of works or services the design criteria in the Council's Timaru Infrastructure Design Standards shall be complied with.

### **8. Roading**<sup>13</sup>

#### **Circumstances, maximum amount and general purposes of Financial Contributions**

#### **1 The provision of roads, private ways, access ways and service lanes including all future and/or indicative roads, access ways and service lanes**

#### **Circumstances:**

Where new allotments are intended for human habitation or occupation.

#### **Maximum amount of contribution:**

The full and actual cost of providing for all roads, private ways, access ways and service lanes to and within the land being subdivided and/or developed, including but not limited to:

- the value of the necessary land; and
- the provision of access ways, service lanes and fences; and
- the formation and grassing of road berms; and

<sup>13</sup> Kāinga Ora [229.55], [229.56]

	<ul style="list-style-type: none"> <li>the provision of road gardens, median strips, road name plates and road furniture; and</li> <li>road splays, turning bays and slip lanes; and</li> <li>footpaths/walkways, cycleways, shared pathways; and</li> <li>streetscape improvements, parking berms, fences, lights, traffic management devices and electronic/EV charging stations, signage; and</li> <li>road drainage and road crossing; and</li> <li>actual road construction costs.</li> </ul>
<b><u>General purposes for which the financial contribution may be used:</u></b>	<u>To provide safe and efficient vehicle and pedestrian access to and within the subdivision and/or development, to mitigate the adverse effects of roading development, to enhance streetscape and general amenity values and to maintain, improve and develop the roading network.</u>
<b><u>Rural <del>Lifestyle Zone-Residential</del> (Brookfield Road) Zone:</u></b>	<u>The up-grading of the intersection of Landsborough/Coonoor/Fairview Roads for the purpose of safe vehicle movement up to a maximum of 25% of the actual construction costs. The upgrading of the single lane bridge on Brookfield Road to a two lane bridge – to a maximum of 50% of the total construction costs.</u>

NOTE: For the purposes of this rule, a financial contribution can be in the form of the payment of money, land, works or a combination of any of these forms including all future roads, access ways and service lanes.

- a. In the Broughs Gully ~~Outline~~ Development ~~Area~~ Plan ~~area~~ (as set out in DEV1 Broughs Gully Development Area Plan), a financial contribution for roading shall be payable in accordance with the following cost share agreement:
- ~~The~~ cost of all future and indicative roads within the ~~Outline~~ Development ~~Area~~ Plan will be determined and summed to give the total cost of future and indicative roads; and
  - ~~The~~ direct benefit that each property receives from the roading on its land is determined and subtracted from the actual cost of the roading on its land. This could be a positive or negative value. The direct benefit shall be determined by assessing the potential new allotment yield for each existing allotment and multiplying this by the typical amount of road per allotment in recent developments. This is then multiplied by a square metre rate for new road to give a benefit value; and
  - ~~The~~ sum of all the benefit costs determined in 8.a.ii is subtracted from the total cost of all future and indicative roads determined in 8.a.i. This residual cost represents the

- catchment wide benefit that each property receives from adjoining and surrounding properties developing; ~~and~~ and
- iv. ~~The~~ the residual cost determined in 8.a.iii is apportioned to all properties in the catchment in accordance with their developable area; ~~and~~ and
- v. ~~For~~ For each property, the cost of the direct benefit (determined in 8.a.ii) plus the property's share of the apportioned residual cost (determine in 8.a.iii) equals the total cost of that property's financial contribution. If the actual cost of roading on that property is greater than the financial contribution, then the property receives from Council a financial contribution credit (in the form of cash). If the actual cost of roading on that property is less than the financial contribution, then the property pays Council a financial contribution (in the form of cash).

NOTE: The Council's proposals for the basis of cost sharing will be made available to the subdividers in broad terms, i.e. rate of levy on defined areas, basis of adjustment and details of services proposed.

### **Transportation of harvested trees**

5. A financial contribution may be required where vehicle transportation of harvested trees requires upgrading of legal roads or such usage will result in a significant deterioration in roading infrastructure.
6. A financial contribution may be required where vehicle transportation of harvested trees requires upgrading of legal roads or such usage will result in a significant deterioration in roading infrastructure.

### **Roading wear and tear**

7. A financial contribution may be required where vehicle usage will result in a significant deterioration in the roading infrastructure at the points of entry onto the public roading system and on the public roads to the full cost of restoring any damage.

## **2.0 Open Space & Recreation**

1. The following financial contributions are required for the purpose of funding:
- the open space and recreation facilities that Council provides across the ~~ed~~ District; ~~and~~ and
  - the purchase and/or development of the off-road walking and cycling<sup>14</sup> tracks ~~at on the~~ at on the Geraldine Downs identified by the Geraldine Downs walking and cycling tracks ~~specific control area in Appendix 1~~<sup>15</sup>; ~~and~~ and
  - the planting and maintenance of indigenous vegetation in the roadside areas in the Rural Lifestyle ~~Zone~~ Zone located ~~at on the~~ at on the Geraldine Downs and the development of a planting plan and ecological assessment to coordinate and direct the planting; ~~and~~ and
  - the Neighbourhood Reserve and the defined cycleways/walkways of the Temuka North West Outline Development Plan (as set out in DEV4 – Temuka North West Residential Development Area Plan).<sup>16</sup>
2. The financial contribution shall be payable to Council when a development is a:
- subdivision resulting in additional allotments for residential purposes; or
  - a residential unit (other than a replacement ~~of an existing~~ residential unit); or
  - ~~a~~ visitor accommodation (other than a replacement ~~of an existing~~ visitor accommodation).
3. The financial contribution shall be payable to ~~Timaru District~~ Council when:

<sup>14</sup> Clause 16(2)

<sup>15</sup> Kāinga Ora [229.55], [229.56]

<sup>16</sup> Kāinga Ora [229.55], [229.56]

- a. for a subdivision, before a certificate under section 224(c) of the RMA is issued; or
- b. for a residential unit or a visitor accommodation, before building consent is issued.

4. Where an allotment is proposed as part of a subdivision and intended to accommodate a new residential unit, a financial contribution shall be payable to ~~Timaru District~~ Council for 4% of the registered valuation of an allotment except where:
- a. any allotment has an existing residential unit, the financial contribution is not payable; and
  - b. any allotment that is more than 1,000m<sup>2</sup> in area, the valuation of this allotment will be only based on the value of a 1,000m<sup>2</sup> of land around where the residential unit will be located; and
  - c. the consent authority may reduce this amount, or waive the requirement, if the development is providing public open space or recreation facilities as part of the development that will be vested to Council; and
  - d. the valuation must be undertaken by a registered valuer no longer than 6 months prior to the section 224 certificate application being lodged.

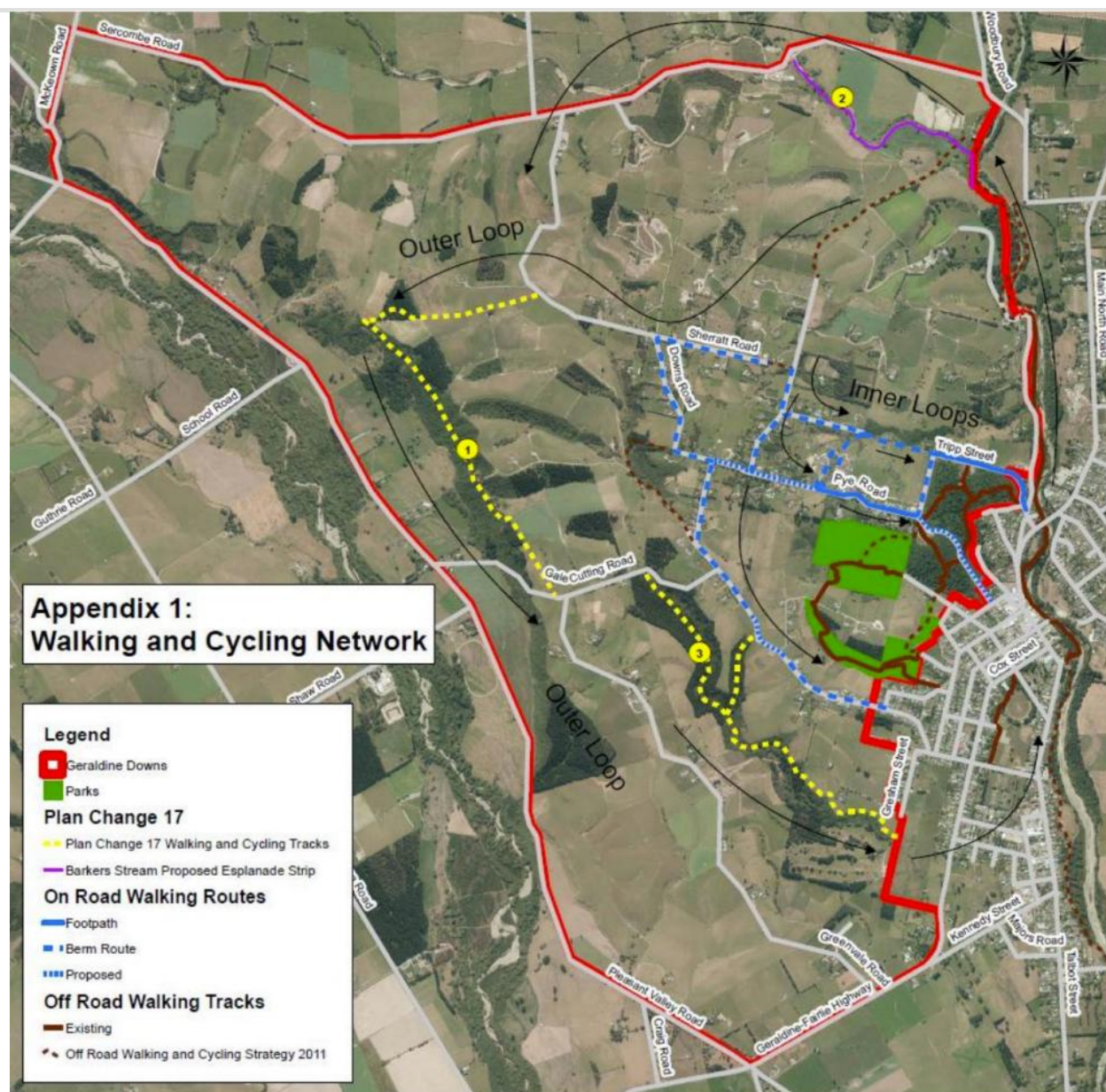
5. For residential units ~~including~~ <sup>17</sup> or visitor accommodation, a financial contribution shall be payable to ~~Timaru District~~ Council for 4% of the registered valuation of the site (land value only) for each residential unit except where:
- this is the first residential unit and the open space and recreation financial contribution for this site has been paid as part of the subdivision that created this site; or
  - the site is more than 1,000m<sup>2</sup> in area, the valuation of this site will be only based on the value of a 1,000m<sup>2</sup> of land immediately surrounding the proposed residential unit; and
  - it is a replacement unit of an existing residential unit; and
  - the valuation must be undertaken by a registered valuer no longer than 6 months prior to the building consent being lodged; or
  - the site is within Geraldine Downs (see Appendix 1), in which case the financial contribution shall be the higher of 4% or the following:<sup>18</sup>

	<u>Tracks</u>	<u>Natural Habitat</u>
<u>New <del>Household</del> residential Unit or new allotment that will accommodate a new <del>household</del> residential unit</u>	<u>\$3,000</u>	<u>\$2,000</u>
<u><del>Extensions &amp; additions that increase the footprint of existing household units by 50% or more</del></u>	<u>\$500</u>	<u>\$500</u>
<u><del>New commercial development or new allotment that will accommodate a new commercial development</del></u>	<u>\$3,000</u>	<u>\$2,000</u>
<u>New non-residential buildings</u>		
<u><del>Extensions &amp; additions that increase the footprint of existing commercial development by 25% or more</del></u>	<u>\$500</u>	<u>\$500</u>
<u>Additions to non-residential buildings with an increase in <del>gross</del> floor area over 50m<sup>2</sup></u>		
<p><b>Note:</b> Where the land to be subdivided or developed contains part of the off-road walking and cycling tracks identified in <b>Appendix 1</b> below being the tracks and esplanade strip numbered 1, 2 and 3, the financial contribution shall be in the form of land (or an interest in that land) up to the level determined by the table above or 4% whichever is the greater.</p> <p>In circumstances where further land is required to complete the track alignment within the property to be developed that is in excess of the financial contribution, such land shall only be acquired by negotiation and agreement between the parties, with appropriate compensation paid.</p>		

<sup>17</sup> Clause 16(2) as visitor accommodation occurs in a residential unit

<sup>18</sup> Kāinga Ora [229.55], [229.56]





6. The Council may decide to require an esplanade reserve or esplanade strip in lieu of any financial contribution required under any other part of the District Plan.<sup>19</sup>

<sup>19</sup> Kāinga Ora [229.55], [229.56]

## Designations

Designations are a planning tool used by Ministers of the Crown, local authorities, and network utility operators approved as requiring authorities under s167 of the RMA. Only requiring authorities can seek designations for land.

A designation operates as a form of 'spot zoning' over a site, area, or route in the District Plan and has a similar effect to a plan change (establishing a permitted activity rule) as it:

- a. identifies the land affected by the District Plan;
- b. enables a requiring authority to undertake the works within the designated area, for the purpose of the designation, without the need for a land use consent (i.e., supersedes the District Plan provisions); and
- c. sets the parameters under which the activity can occur.

The scope of the designation defines the nature of the activity and the works that can be established on the designated site and is generally determined by its purpose. The form and scope of works (in some cases) is also controlled by conditions attached to the designation.

The underlying zone of the District Plan remains over the site and applies to any other activities that are for a purpose different to the designation purpose (or activities undertaken by a party other than the requiring authority). Therefore, any activity or works outside the scope of a designation will require resource consent unless the activity or works are a permitted activity in the District Plan.<sup>1</sup>

This section includes designations from ~~for~~ the following requiring authorities:<sup>2</sup>

CNZ - Chorus New Zealand Limited  
ECAN - Canterbury Regional Council  
KHL - KiwiRail Holdings Limited  
MSNZ - Meteorological Service of New Zealand Limited  
MEDU - Minister of Education  
MPOL - Minister of Police / NZ Police  
MJUS - Minister of Justice  
NZTA - New Zealand Transport Agency  
SPK - Spark New Zealand Trading Limited  
TDC - Timaru District Council  
TPR - Transpower New Zealand Limited

---

<sup>1</sup> McAuley Trust [142.1]

<sup>2</sup> Clause 16(2) Amendment



## CNZ — CHORUS NZ LTD

### Chorus NZ Ltd

<u>Designation Unique identifier and map identifier</u>	CNZ-1
<u>Purpose of the Designation purpose</u>	Telecommunications and <del>R</del> adio <del>C</del> ommunications and <del>A</del> ncillary
Site identifier	Washdyke Exchange 6 Racecourse Road, Washdyke
<del>Lapse date or Identification that designation has been given effect</del>	Given effect to (no lapse date)
Designation hierarchy <u>under section 177 of the Resource Management Act</u>	Primary
Conditions	No
Additional information	See also Designation SPK-1 which is the secondary designation.  Former Designation 12.  Rollover designation with minor corrections to schedule (update requiring authority, add site name/address, remove legal description).

### Chorus NZ Ltd

<u>Designation Unique identifier and map identifier</u>	CNZ-2
<u>Purpose of the Designation purpose</u>	Telecommunications and <del>R</del> adio <del>C</del> ommunications and <del>A</del> ncillary
Site identifier	Gleniti Exchange 391 Wai-iti Road, Gleniti Timaru
<del>Lapse date or Identification that designation has been given effect</del>	Given effect to (no lapse date)
Designation hierarchy <u>under section 177 of the Resource Management Act</u>	Primary
Conditions	No
Additional information	See also Designation SPK-2 which is the secondary designation.  Former Designation 34.  Rollover designation with minor corrections to schedule (update requiring authority, add site name/address, remove legal description).

Chorus NZ Ltd	
<u>Designation Unique identifier</u> <del>and map identifier</del>	CNZ-3
<del>Purpose of the</del> <u>Designation purpose</u>	Telecommunications and <del>R</del> adio <del>C</del> ommunications and <del>A</del> ncillary
Site identifier	Arundel Exchange 397 Peel Forest Road, RD 22, Geraldine
<del>Lapse date or Identification that designation has been given effect</del>	Given effect to (no lapse date)
Designation hierarchy <u>under section 177 of the Resource Management Act</u>	Primary
Conditions	No
Additional information	Former Designation 87.  Rollover designation with minor corrections to schedule (update requiring authority, add site name/address, remove legal description).
Chorus NZ Ltd	
<u>Designation Unique identifier</u> <del>and map identifier</del>	CNZ-4
<del>Purpose of the</del> <u>Designation purpose</u>	Telecommunications and <del>R</del> adio <del>C</del> ommunications and <del>A</del> ncillary
Site identifier	Waitohi Hill Microwave Station Stalker Road, RD 21, Geraldine
<del>Lapse date or Identification that designation has been given effect</del>	Given effect to (no lapse date)
Designation hierarchy <u>under section 177 of the Resource Management Act</u>	Primary
Conditions	No
Additional information	Former Designation 101.  Rollover designation with minor corrections to schedule (update requiring authority, add site name/address, remove legal description).
Chorus NZ Ltd	
<u>Designation Unique identifier</u> <del>and map identifier</del>	CNZ-5

<del>Purpose of the</del> <del>Designation purpose</del>	Telecommunications and <del>R</del> adio <del>C</del> ommunications and <del>A</del> ncillary
Site identifier	Rangitata Fibre Optic Building 4 Edgar Road, RD 26, Temuka
<del>Lapse date or Identification</del> <del>that designation has been</del> <del>given effect</del>	Given effect to (no lapse date)
Designation hierarchy <u>under section 177 of the Resource Management Act</u>	Primary
Conditions	No
Additional information	Former Designation 103.  Rollover designation with minor corrections to schedule (update requiring authority, add site name/address, remove legal description).
Chorus NZ Ltd	
<del>Designation Unique</del> <del>identifier and map identifier</del>	CNZ-6
<del>Purpose of the</del> <del>Designation purpose</del>	Telecommunications and <del>R</del> adio <del>C</del> ommunications and <del>A</del> ncillary
Site identifier	Clandeboyne Exchange Rolleston Road, RD 26, Temuka
<del>Lapse date or Identification</del> <del>that designation has been</del> <del>given effect</del>	Given effect to (no lapse date)
Designation hierarchy <u>under section 177 of the Resource Management Act</u>	Primary
Conditions	No
Additional information	See also Designation SPK-4 which is the secondary designation.  Former Designation 135.  Rollover designation with minor modification to schedule (relocate site, update requiring authority, add site name/address, remove legal description).
Chorus NZ Ltd	
<del>Designation Unique</del> <del>identifier and map identifier</del>	CNZ-7

<del>Purpose of the</del> <del>Designation purpose</del>	Telecommunications and <del>R</del> adio <del>C</del> ommunications and <del>A</del> ncillary
Site identifier	Mt Horrible Radio Station Mt Horrible Road, RD 2, Timaru
<del>Lapse date or Identification</del> <del>that designation has been</del> <del>given effect</del>	Given effect to (no lapse date)
Designation hierarchy <u>under section 177 of the Resource Management Act</u>	Primary
Conditions	No
Additional information	Former Designation 147.  Rollover designation with minor corrections to schedule (update requiring authority, add site name/address, remove legal description).
Chorus NZ Ltd	
<del>Designation Unique</del> <del>identifier and map identifier</del>	CNZ-8
<del>Purpose of the</del> <del>Designation purpose</del>	Telecommunications and <del>R</del> adio <del>C</del> ommunications and <del>A</del> ncillary
Site identifier	Otipua Exchange 1025 Beaconsfield Road, RD 2, Timaru
<del>Lapse date or Identification</del> <del>that designation has been</del> <del>given effect</del>	Given effect to (no lapse date)
Designation hierarchy <u>under section 177 of the Resource Management Act</u>	Primary
Conditions	No
Additional information	Former Designation 152.  Rollover designation with minor corrections to schedule (update requiring authority, add site name/address, remove legal description).
Chorus NZ Ltd	
<del>Designation Unique</del> <del>identifier and map identifier</del>	CNZ-9
<del>Purpose of the</del> <del>Designation purpose</del>	Telecommunications and <del>R</del> adio <del>C</del> ommunications and <del>A</del> ncillary
Site identifier	Woodbury Exchange 1 Burdon Road, RD 21, Geraldine

<b>Lapse date <del>or Identification that designation has been given effect</del></b>	Given effect to (no lapse date)
<b>Designation hierarchy <u>under section 177 of the Resource Management Act</u></b>	Primary
<b>Conditions</b>	No
<b>Additional information</b>	Former Designation 158.  Rollover designation with minor corrections to schedule (update requiring authority, add site name/address, remove legal description).
<b>Chorus NZ Ltd</b>	
<b><u>Designation Unique identifier and map identifier</u></b>	CNZ-10
<b><u>Purpose of the Designation purpose</u></b>	Telecommunications and <del>R</del> adio <del>C</del> ommunications and <del>A</del> ncillary
<b>Site identifier</b>	Cave Exchange 51 Elizabeth Street, Cave
<b>Lapse date <del>or Identification that designation has been given effect</del></b>	Given effect to (no lapse date)
<b>Designation hierarchy <u>under section 177 of the Resource Management Act</u></b>	Primary
<b>Conditions</b>	No
<b>Additional information</b>	Former Designation 159.  Rollover designation with minor corrections to schedule (update requiring authority, add site name/address, remove legal description).
<b>Chorus NZ Ltd</b>	
<b><u>Designation Unique identifier and map identifier</u></b>	CNZ-11
<b><u>Purpose of the Designation purpose</u></b>	Telecommunications and <del>R</del> adio <del>C</del> ommunications and <del>A</del> ncillary
<b>Site identifier</b>	Geraldine Exchange & Line Depot 45B Talbot Street, Geraldine
<b>Lapse date <del>or Identification that designation has been given effect</del></b>	Given effect to (no lapse date)

Designation hierarchy <u>under section 177 of the Resource Management Act</u>	Primary
Conditions	No
Additional information	Former Designation 160.  Rollover designation with minor corrections to schedule (update requiring authority, add site name/address, remove legal description).
Chorus NZ Ltd	
<del>Designation Unique identifier and map identifier</del>	CNZ-12
<del>Purpose of the Designation purpose</del>	Telecommunications and <del>R</del> adio <del>C</del> ommunications and <del>A</del> ncillary
Site identifier	Temuka Exchange 21 Fraser Street, Temuka
<del>Lapse date or Identification that designation has been given effect</del>	Given effect to (no lapse date)
Designation hierarchy <u>under section 177 of the Resource Management Act</u>	Primary
Conditions	No
Additional information	Former Designation 174.  Rollover designation with minor corrections to schedule (update requiring authority, add site name/address, remove legal description, correct extent of designation to include entire site).
Chorus NZ Ltd	
<del>Designation Unique identifier and map identifier</del>	CNZ-13
<del>Purpose of the Designation purpose</del>	Telecommunications and <del>R</del> adio <del>C</del> ommunications and <del>A</del> ncillary
Site identifier	Pleasant Point Exchange Cnr Manse Road an Afghan Street, Pleasant Point
<del>Lapse date or Identification that designation has been given effect</del>	Given effect to (no lapse date)
Designation hierarchy <u>under section</u>	Primary

<u>177 of the Resource Management Act</u>	
Conditions	No
Additional information	Former Designation 185.  Rollover designation with minor corrections to schedule (update requiring authority, add site name/address, remove legal description, correct extent of designation to include entire site).
Chorus NZ Ltd	
<u>Designation Unique identifier and map identifier</u>	CNZ-14
<u>Purpose of the Designation purpose</u>	Telecommunications and <del>R</del> adio <del>C</del> ommunications and <del>A</del> ncillary
Site identifier	Hilton Exchange Brenton Road, Hilton
<del>Lapse date or Identification that designation has been given effect</del>	Given effect to (no lapse date)
<u>Designation hierarchy under section 177 of the Resource Management Act</u>	Primary
Conditions	No
Additional information	New designation.



## ECAN — CANTERBURY REGIONAL COUNCIL

### Canterbury Regional Council

<b><u>Designation Unique identifier and map identifier</u></b>	ECAN-1
<b><u>Purpose of the Designation purpose</u></b>	Soil <del>C</del> conservation and <del>R</del> iver <del>C</del> ontrol
<b>Site identifier</b>	Washdyke Creek West of State Highway 1
<b><del>Lapse date or Identification that designation has been given effect</del></b>	Given effect to (no lapse date)
<b>Designation hierarchy <u>under section 177 of the Resource Management Act</u></b>	Primary
<b>Conditions</b>	No
<b>Additional information</b>	Former Designation 11  Rollover designation with minor corrections to schedule (remove legal description, add location/address).

### Canterbury Regional Council

<b><u>Designation Unique identifier and map identifier</u></b>	ECAN-2
<b><u>Purpose of the Designation purpose</u></b>	Soil <del>C</del> conservation and <del>R</del> iver <del>C</del> ontrol
<b>Site identifier</b>	Taitarakihi Creek West Between Old North Road and Evans Street
<b><del>Lapse date or Identification that designation has been given effect</del></b>	Given effect to (no lapse date)
<b>Designation hierarchy <u>under section 177 of the Resource Management Act</u></b>	Primary
<b>Conditions</b>	No
<b>Additional information</b>	Former Designation 32  Rollover designation with minor corrections to schedule (remove legal description, add location/address).

## Canterbury Regional Council

<b><u>Designation Unique identifier and map identifier</u></b>	ECAN-3
<b><u>Purpose of the Designation purpose</u></b>	Soil <del>C</del> conservation and <del>R</del> iver <del>C</del> ontrol
<b>Site identifier</b>	Taitarakihi Creek East From Evans Street to the coast.
<b><del>Lapse date or Identification that designation has been given effect</del></b>	Given effect to (no lapse date)
<b>Designation hierarchy <u>under section 177 of the Resource Management Act</u></b>	Primary
<b>Conditions</b>	No
<b>Additional information</b>	Former Designation 33.  Rollover designation with minor corrections to schedule (remove legal description, add location/address).

## Canterbury Regional Council

<b><u>Designation Unique identifier and map identifier</u></b>	ECAN-4
<b><u>Purpose of the Designation purpose</u></b>	Soil <del>C</del> conservation and <del>R</del> iver <del>C</del> ontrol
<b>Site identifier</b>	Ōrāri River North-east of the river, west of Inglis Road, RD 22, Geraldine
<b><del>Lapse date or Identification that designation has been given effect</del></b>	Given effect to (no lapse date)
<b>Designation hierarchy <u>under section 177 of the Resource Management Act</u></b>	Primary
<b>Conditions</b>	No
<b>Additional information</b>	Former Designation 88.  Rollover designation with minor corrections to schedule (remove legal description, add location/address).

## Canterbury Regional Council

<b><u>Designation Unique identifier and map identifier</u></b>	ECAN-5
--	--------

<del>Purpose of the</del> <del>Designation purpose</del>	Soil <del>C</del> conservation and <del>R</del> iver <del>C</del> ontrol
Site identifier	Racecourse Road, RD 22, Geraldine
<del>Lapse date or Identification</del> <del>that designation has been</del> <del>given effect</del>	Given effect to (no lapse date)
Designation hierarchy <u>under section 177 of the Resource Management Act</u>	Primary
Conditions	No
Additional information	Former Designation 92.  Rollover designation with minor corrections to schedule (remove legal description, add location/address).
Canterbury Regional Council	
<del>Designation Unique</del> <del>identifier and map identifier</del>	ECAN-6
<del>Purpose of the</del> <del>Designation purpose</del>	Soil <del>C</del> conservation and <del>R</del> iver <del>C</del> ontrol
Site identifier	Waihī River East of Winchester-Geraldine Road, north of Coach Road, Geraldine
<del>Lapse date or Identification</del> <del>that designation has been</del> <del>given effect</del>	Given effect to (no lapse date)
Designation hierarchy <u>under section 177 of the Resource Management Act</u>	Primary
Conditions	No
Additional information	Former Designation 93.  Rollover designation with minor corrections to schedule (remove legal description, add location/address).
Canterbury Regional Council	
<del>Designation Unique</del> <del>identifier and map identifier</del>	ECAN-7
<del>Purpose of the</del> <del>Designation purpose</del>	Soil <del>C</del> conservation and <del>R</del> iver <del>C</del> ontrol
Site identifier	Ōrāri River - at Orari Bridge West of the river, between Flatman Road and Main North Road

<b>Lapse date</b> <del>or Identification that designation has been given effect</del>	Given effect to (no lapse date)
<b>Designation hierarchy</b> <u>under section 177 of the Resource Management Act</u>	Primary
<b>Conditions</b>	No
<b>Additional information</b>	Former Designation 94.  Rollover designation with minor corrections to schedule (mapping correction, remove legal description, add location/address).

#### Canterbury Regional Council

<b>Designation</b> <u>Unique identifier</u> <del>and map identifier</del>	ECAN-8
<del>Purpose of the</del> <b>Designation purpose</b>	Soil <del>C</del> conservation and <del>R</del> iver <del>C</del> ontrol
<b>Site identifier</b>	Rangitata River West of Rangitata river, between Orari-Rangitata Highway and Old Main South Road
<b>Lapse date</b> <del>or Identification that designation has been given effect</del>	Given effect to (no lapse date)
<b>Designation hierarchy</b> <u>under section 177 of the Resource Management Act</u>	Primary
<b>Conditions</b>	No
<b>Additional information</b>	Former Designation 102.  Rollover designation with minor corrections to schedule (mapping correction, remove legal description, add location/address).

#### Canterbury Regional Council

<b>Designation</b> <u>Unique identifier</u> <del>and map identifier</del>	ECAN-9
<del>Purpose of the</del> <b>Designation purpose</b>	Soil <del>C</del> conservation and <del>R</del> iver <del>C</del> ontrol
<b>Site identifier</b>	Ōpihi River - West Between Wigley Road, RD 12, Pleasant Point, southern end of Graham Road

<b>Lapse date <del>or Identification that designation has been given effect</del></b>	Given effect to (no lapse date)
<b>Designation hierarchy <u>under section 177 of the Resource Management Act</u></b>	Primary
<b>Conditions</b>	No
<b>Additional information</b>	Former Designation 104.  Rollover designation with minor corrections to schedule (remove legal description, add location/address).
<b>Canterbury Regional Council</b>	
<b><del>Designation Unique identifier and map identifier</del></b>	ECAN-10
<b><del>Purpose of the Designation purpose</del></b>	Soil <del>C</del> conservation and <del>R</del> iver <del>C</del> ontrol
<b>Site identifier</b>	Kakahu River - East South Boundary Road, RD 25, Temuka
<b>Lapse date <del>or Identification that designation has been given effect</del></b>	Given effect to (no lapse date)
<b>Designation hierarchy <u>under section 177 of the Resource Management Act</u></b>	Primary
<b>Conditions</b>	No
<b>Additional information</b>	Former Designation 105.  Rollover designation with minor corrections to schedule (remove legal description, add location/address).
<b>Canterbury Regional Council</b>	
<b><del>Designation Unique identifier and map identifier</del></b>	ECAN-11
<b><del>Purpose of the Designation purpose</del></b>	Soil <del>C</del> conservation and <del>R</del> iver <del>C</del> ontrol
<b>Site identifier</b>	Kakahu River - West Earl Road, RD 21, Geraldine
<b>Lapse date <del>or Identification that designation has been given effect</del></b>	Given effect to (no lapse date)

Designation hierarchy <u>under section 177 of the Resource Management Act</u>	Primary
Conditions	No
Additional information	Former Designation 106.  Rollover designation with minor corrections to schedule (remove legal description, add location/address).
Canterbury Regional Council	
<del>Designation Unique identifier and map identifier</del>	ECAN-12
<del>Purpose of the Designation purpose</del>	Soil <del>C</del> conservation and <del>R</del> iver <del>C</del> ontrol
Site identifier	Rangitata River Mouth Orton Rangitata Mouth Road, RD 26, Temuka
<del>Lapse date or Identification that designation has been given effect</del>	Given effect to (no lapse date)
Designation hierarchy <u>under section 177 of the Resource Management Act</u>	Primary
Conditions	No
Additional information	Former Designation 114.  Rollover designation with minor corrections to schedule (remove legal description, add location/address).
Canterbury Regional Council	
<del>Designation Unique identifier and map identifier</del>	ECAN-13
<del>Purpose of the Designation purpose</del>	Soil <del>C</del> conservation and <del>R</del> iver <del>C</del> ontrol
Site identifier	Ōpihi River - East River Road, RD 25, Temuka
<del>Lapse date or Identification that designation has been given effect</del>	Given effect to (no lapse date)
Designation hierarchy <u>under section 177 of the Resource Management Act</u>	Primary

Conditions	No
Additional information	Former Designation 128.  Rollover designation with minor corrections to schedule (remove legal description, add location/address).
Canterbury Regional Council	
<del>Designation Unique identifier and map identifier</del>	ECAN-14
<del>Purpose of the Designation purpose</del>	Soil <del>C</del> conservation and <del>R</del> iver <del>C</del> ontrol
Site identifier	Tengawai River Hammond Road, RD 13, Pleasant
<del>Lapse date or Identification that designation has been given effect</del>	Given effect to (no lapse date)
Designation hierarchy <u>under section 177 of the Resource Management Act</u>	Primary
Conditions	No
Additional information	Former Designation 129.  Rollover designation with minor corrections to schedule (remove legal description, add location/address).
Canterbury Regional Council	
<del>Designation Unique identifier and map identifier</del>	ECAN-15
<del>Purpose of the Designation purpose</del>	Soil <del>C</del> conservation and <del>R</del> iver <del>C</del> ontrol
Site identifier	Eastern end of Ōrāri River Parke Road, RD 26, Temuka and Brown Road, RD 26, Temuka
<del>Lapse date or Identification that designation has been given effect</del>	Given effect to (no lapse date)
Designation hierarchy <u>under section 177 of the Resource Management Act</u>	Primary
Conditions	No
Additional information	Former Designation 136.



	Rollover designation with minor corrections to schedule (remove legal description, add location/address).
<b>Canterbury Regional Council</b>	
<del>Designation Unique identifier and map identifier</del>	ECAN-16
<del>Purpose of the Designation purpose</del>	Soil <del>C</del> conservation and <del>R</del> iver <del>C</del> ontrol
Site identifier	Temuka River and Ōpihi River Georgetown Road, RD 25, Temuka
<del>Lapse date or Identification that designation has been given effect</del>	Given effect to (no lapse date)
Designation hierarchy <u>under section 177 of the Resource Management Act</u>	Primary
Conditions	No
Additional information	Former Designation 139.  Rollover designation with minor corrections to schedule (mapping correction, remove legal description, add location/address).
<b>Canterbury Regional Council</b>	
<del>Designation Unique identifier and map identifier</del>	ECAN-17
<del>Purpose of the Designation purpose</del>	<u>Canterbury</u> Regional Council Works Depot
Site identifier	E <del>C</del> ean Works Depot 12 Domain Avenue, Temuka
<del>Lapse date or Identification that designation has been given effect</del>	Given effect to (no lapse date)
Designation hierarchy <u>under section 177 of the Resource Management Act</u>	Primary
Conditions	No
Additional information	Former Designation 173.  Rollover designation with minor corrections to schedule (remove legal description, add location/address).

## KRH — KIWIRAIL HOLDINGS LTD

### KiwiRail Holdings Ltd

<b><u>Designation</u> Unique identifier <del>and map identifier</del></b>	KRH-1
<b><del>Purpose of the</del> <u>Designation purpose</u></b>	Railway <del>P</del> urposes (Main South Line)
<b>Site identifier</b>	Various. Runs through the <del>e</del> District from the Ashburton District <del>Council</del> boundary to the north to Waitmate District <del>Council</del> boundary in <u>the</u> south.
<b>Lapse date <del>or Identification that designation has been given effect</del></b>	Given effect to (no lapse date)
<b>Designation hierarchy <u>under section 177 of the Resource Management Act</u></b>	Primary
<b>Conditions</b>	No
<b>Additional information</b>	<p>Former designations 5, 6, 15, 16, 25, 26, 49, 56, 71, 79, 91, 107, 108, 113, 141, 142, 153, 154, 155, 169, 170.</p> <p>Rollover designation with minor corrections to schedule (all designations merged into one, update purpose, remove legal description, add location/address).</p>

## MSNZ — METEOROLOGICAL SERVICE OF NEW ZEALAND

### Meteorological Service of New Zealand

<b><u>Designation</u></b> <del>Unique identifier and map identifier</del>	MSNZ-1
<del>Purpose of the</del> <b><u>Designation purpose</u></b>	Meteorological <del>A</del> activities
<b>Site identifier</b>	Timaru Airport 160 to 186 Falvey Road, Levels
<del>Lapse date or</del> <del>Identification that designation has been given effect</del>	Given effect to (no lapse date)
<b>Designation hierarchy <u>under</u> section 177 of the Resource Management Act</b>	Secondary
<b>Conditions</b>	No
<b>Additional information</b>	Former Designation 145.  Rollover designation with minor corrections to schedule (mapping correction and remove legal description).

## MEDU — MINISTER OF EDUCATION

Minister of Education	
<del>Designation Unique identifier and map identifier</del>	MEDU-1
<del>Purpose of the designation purpose</del>	Education Purposes - Intermediate and Secondary School (Years 7-13)
Site identifier	Mountainview High School 97 Pages Road, Timaru <u>Lot 8 DP 62689, PT Lot 4 DP 19552, PT Lot 4 DP 152, and PT RS 3751<sup>1</sup></u>
<del>Lapse date or Identification that designation has been given effect</del>	Given effect to (no lapse date)
Designation hierarchy <u>under section 177 of the Resource Management Act</u>	Primary
Conditions	No
Additional information	<ol style="list-style-type: none"> <li>Former Designation 18. Rollover designation with minor corrections to schedule (update purpose, <del>remove legal description,</del> add location/address).</li> <li><del>Each of these</del> <u>This</u> designation<del>s</del> enables the establishment of a school that is able but is not required to cater for all the school years listed in the designation.</li> <li>“Education Purposes” in the designation purpose means: <ol style="list-style-type: none"> <li>Enable the use of the facilities on the designated site by and for the educational benefit of any school age students (i.e. years 0 to 13) and preschool children stated in the Designation Purpose; regardless of whether they are enrolled at any institution located on that designated;</li> <li>Enable the provision of supervised care and study opportunities for students outside school hours in school;</li> <li>Enable the provision of community education (e.g. night classes for adults) outside school hours in school;</li> <li>Include but not limited to the provision of school academic, sporting, social and cultural education and training including through: <ol style="list-style-type: none"> <li>Formal or informal school recreational, sporting and outdoor activities and competitions whether carried out during or outside school hours;</li> <li>Formal and informal school cultural activities and competitions whether carried out during or outside school hours;</li> <li>The provision of specialist hubs and units (including language immersion units and teen parent units) for students with particular educational requirements or special.</li> </ol> </li> </ol> </li> </ol>

<sup>1</sup> MoE [106.52]

	<ul style="list-style-type: none"> <li>e. Enable the use of facilities for purposes associated with the education of students including school assemblies, functions, fair and other gatherings whether carried out during or outside school hours;</li> <li>f. Enable the provision of associated administrative services; car parking and vehicle manoeuvring and health, social service and medical services (including dental clinics and sick bays);</li> <li>g. Enable the housing on site for staff members whose responsibility requires them to live on site (e.g. school caretaker) and their families.</li> </ul>
<b>Minister of Education</b>	
<b><u>Designation Unique identifier and map identifier</u></b>	MEDU-2
<b><u>Purpose of the Designation purpose</u></b>	Education <del>Pp</del> urposes - Primary School (Years 0-8)
<b>Site identifier</b>	Grantlea Downs School 65 Grants Road, Timaru <u>Part Lot 2 DP 3477 and Part Lot 18 DP 19911<sup>2</sup></u>
<b><del>Lapse date or Identification that designation has been given effect</del></b>	Given effect to (no lapse date)
<b><u>Designation hierarchy under section 177 of the Resource Management Act</u></b>	Primary
<b>Conditions</b>	No
<b>Additional information</b>	<ol style="list-style-type: none"> <li>1. Former Designation 28. Rollover designation with minor corrections to schedule (update purpose, <del>remove legal description,</del> add location/address).</li> <li>2. <del>Each of these</del> <u>This</u> designations enables the establishment of a school that is able but is not required to cater for all the school years listed in the designation.</li> <li>3. "Education Purposes" in the designation purpose means: <ol style="list-style-type: none"> <li>a. Enable the use of the facilities on the designated site by and for the educational benefit of any school age students (i.e. years 0 to 13) and preschool children stated in the Designation Purpose; regardless of whether they are enrolled at any institution located on that designated;</li> <li>b. Enable the provision of supervised care and study opportunities for students outside school hours in school;</li> <li>c. Enable the provision of community education (e.g. night classes for adults) outside school hours in school;</li> <li>d. Include but not limited to the provision of school academic, sporting, social and cultural education and training including through:</li> </ol> </li> </ol>

<sup>2</sup> MoE [106.53]

	<ul style="list-style-type: none"> <li>i. Formal or informal school recreational, sporting and outdoor activities and competitions whether carried out during or outside school hours;</li> <li>ii. Formal and informal school cultural activities and competitions whether carried out during or outside school hours;</li> <li>iii. The provision of specialist hubs and units (including language immersion units and teen parent units) for students with particular educational requirements or special.</li> <li>e. Enable the use of facilities for purposes associated with the education of students including school assemblies, functions, fair and other gatherings whether carried out during or outside school hours;</li> <li>f. Enable the provision of associated administrative services; car parking and vehicle manoeuvring and health, social service and medical services (including dental clinics and sick bays);</li> <li>g. Enable the housing on site for staff members whose responsibility requires them to live on site (e.g. school caretaker) and their families.</li> </ul>
<b>Minister of Education</b>	
<b><u>Designation Unique identifier and map identifier</u></b>	MEDU-3
<b><u>Purpose of the Designation purpose</u></b>	Education <del>P</del> urposes - Primary School (Years 0-8)
<b>Site identifier</b>	Oceanview Heights 241 Selwyn Street, Timaru <u>Lot 1 DP 14173 and Part Lot 8 DP 2552<sup>3</sup></u>
<b><u>Lapse date or Identification that designation has been given effect</u></b>	Given effect to (no lapse date)
<b><u>Designation hierarchy under section 177 of the Resource Management Act</u></b>	Primary
<b>Conditions</b>	No
<b>Additional information</b>	<ol style="list-style-type: none"> <li>1. Former Designation 29. Rollover designation with minor corrections to schedule (update purpose, <del>remove legal description,</del> add location/address).</li> <li>2. <del>Each of these</del> <u>This</u> designation enables the establishment of a school that is able but is not required to cater for all the school years listed in the designation.</li> <li>3. "Education Purposes" in the designation purpose means: <ol style="list-style-type: none"> <li>a. Enable the use of the facilities on the designated site by and for the educational benefit of any school age students (i.e.</li> </ol> </li> </ol>

<sup>3</sup> MoE [106.54]

	<p>years 0 to 13) and preschool children stated in the Designation Purpose; regardless of whether they are enrolled at any institution located on that designated;</p> <ul style="list-style-type: none"> <li>b. Enable the provision of supervised care and study opportunities for students outside school hours in school;</li> <li>c. Enable the provision of community education (e.g. night classes for adults) outside school hours in school;</li> <li>d. Include but not limited to the provision of school academic, sporting, social and cultural education and training including through; <ul style="list-style-type: none"> <li>i. Formal or informal school recreational, sporting and outdoor activities and competitions whether carried out during or outside school hours;</li> <li>ii. Formal and informal school cultural activities and competitions whether carried out during or outside school hours;</li> <li>iii. The provision of specialist hubs and units (including language immersion units and teen parent units) for students with particular educational requirements or special.</li> </ul> </li> <li>e. Enable the use of facilities for purposes associated with the education of students including school assemblies, functions, fair and other gatherings whether carried out during or outside school hours;</li> <li>f. Enable the provision of associated administrative services; car parking and vehicle manoeuvring and health, social service and medical services (including dental clinics and sick bays);</li> <li>g. Enable the housing on site for staff members whose responsibility requires them to live on site (e.g. school caretaker) and their families.</li> </ul>
<b>Minister of Education</b>	
<b><u>Designation Unique identifier and map identifier</u></b>	MEDU-4
<b><u>Purpose of the Designation purpose</u></b>	Education Purposes - Primary School (Years 0-8)
<b>Site identifier</b>	Gleniti School 22 Heath Street, Gleniti <u>Lot 9 DP 51228, Part RS 8346 and Part RS 8434<sup>4</sup></u>
<b><u>Lapse date or Identification that designation has been given effect</u></b>	Given effect to (no lapse date)
<b><u>Designation hierarchy under section 177 of the Resource Management Act</u></b>	Primary
<b>Conditions</b>	No

<sup>4</sup> MoE [106.55]

Additional information	<ol style="list-style-type: none"> <li>1. Former Designation 35. Rollover designation with minor corrections to schedule (update purpose, <del>remove legal description,</del> add location/address).</li> <li>2. <del>Each of these</del> <u>This</u> designation<del>s</del> enables the establishment of a school that is able but is not required to cater for all the school years listed in the designation.</li> <li>3. "Education Purposes" in the designation purpose means: <ol style="list-style-type: none"> <li>a. Enable the use of the facilities on the designated site by and for the educational benefit of any school age students (i.e. years 0 to 13) and preschool children stated in the Designation Purpose; regardless of whether they are enrolled at any institution located on that designated;</li> <li>b. Enable the provision of supervised care and study opportunities for students outside school hours in school;</li> <li>c. Enable the provision of community education (e.g. night classes for adults) outside school hours in school;</li> <li>d. Include but not limited to the provision of school academic, sporting, social and cultural education and training including through; <ol style="list-style-type: none"> <li>i. Formal or informal school recreational, sporting and outdoor activities and competitions whether carried out during or outside school hours;</li> <li>ii. Formal and informal school cultural activities and competitions whether carried out during or outside school hours;</li> <li>iii. The provision of specialist hubs and units (including language immersion units and teen parent units) for students with particular educational requirements or special.</li> </ol> </li> <li>e. Enable the use of facilities for purposes associated with the education of students including school assemblies, functions, fair and other gatherings whether carried out during or outside school hours;</li> <li>f. Enable the provision of associated administrative services; car parking and vehicle manoeuvring and health, social service and medical services (including dental clinics and sick bays);</li> <li>g. Enable the housing on site for staff members whose responsibility requires them to live on site (e.g. school caretaker) and their families.</li> </ol> </li> </ol>
Minister of Education	
<del>Designation Unique identifier and map identifier</del>	MEDU-5
<del>Purpose of the Designation purpose</del>	Education <del>P</del> urposes - Primary School (Years 0-8)
Site identifier	Waimataitai School 25 Trafalgar Street, <u>Timaru</u> <u>Pt Lots 5-9 DP 2172, PT RS 1701 and Pt Lot 61 DP 982<sup>5</sup></u>

<sup>5</sup> MoE [106.56]



<b>Lapse date</b> <del>or Identification that designation has been given effect</del>	Given effect to (no lapse date)
<b>Designation hierarchy</b> <u>under section 177 of the Resource Management Act</u>	Primary
<b>Conditions</b>	No
<b>Additional information</b>	<ol style="list-style-type: none"> <li>Former Designation 36. Rollover designation with minor corrections to schedule (update purpose, <del>remove legal description</del>, add location/address).</li> <li><del>Each of these</del> <u>This</u> designations enables the establishment of a school that is able but is not required to cater for all the school years listed in the designation.</li> <li>“Education Purposes” in the designation purpose means: <ol style="list-style-type: none"> <li>Enable the use of the facilities on the designated site by and for the educational benefit of any school age students (i.e. years 0 to 13) and preschool children stated in the Designation Purpose; regardless of whether they are enrolled at any institution located on that designated;</li> <li>Enable the provision of supervised care and study opportunities for students outside school hours in school;</li> <li>Enable the provision of community education (e.g. night classes for adults) outside school hours in school;</li> <li>Include but not limited to the provision of school academic, sporting, social and cultural education and training including through; <ol style="list-style-type: none"> <li>Formal or informal school recreational, sporting and outdoor activities and competitions whether carried out during or outside school hours;</li> <li>Formal and informal school cultural activities and competitions whether carried out during or outside school hours;</li> <li>The provision of specialist hubs and units (including language immersion units and teen parent units) for students with particular educational requirements or special.</li> </ol> </li> <li>Enable the use of facilities for purposes associated with the education of students including school assemblies, functions, fair and other gatherings whether carried out during or outside school hours;</li> <li>Enable the provision of associated administrative services; car parking and vehicle manoeuvring and health, social service and medical services (including dental clinics and sick bays);</li> <li>Enable the housing on site for staff members whose responsibility requires them to live on site (e.g. school caretaker) and their families.</li> </ol> </li> </ol>

Minister of Education	
<b><u>Designation Unique identifier and map identifier</u></b>	MEDU-6
<b><u>Purpose of the Designation purpose</u></b>	Education <del>P</del> urposes - Primary School (Years 0-8)
<b>Site identifier</b>	Bluestone School 46 Raymond Street, Timaru <u>Pt Lots 26-31 DP 2069, Lots 21-27 DP 2365 and RES 4684<sup>6</sup></u>
<b><del>Lapse date or Identification that designation has been given effect</del></b>	Given effect to (no lapse date)
<b>Designation hierarchy <u>under section 177 of the Resource Management Act</u></b>	Primary
<b>Conditions</b>	No
<b>Additional information</b>	<ol style="list-style-type: none"> <li>Former Designation 50. Rollover designation with minor corrections to schedule (update purpose, <del>remove legal description</del>, add location/address).</li> <li><del>Each of these</del> <u>This</u> designation enables the establishment of a school that is able but is not required to cater for all the school years listed in the designation.</li> <li>“Education Purposes” in the designation purpose means: <ol style="list-style-type: none"> <li>Enable the use of the facilities on the designated site by and for the educational benefit of any school age students (i.e. years 0 to 13) and preschool children stated in the Designation Purpose; regardless of whether they are enrolled at any institution located on that designated;</li> <li>Enable the provision of supervised care and study opportunities for students outside school hours in school;</li> <li>Enable the provision of community education (e.g. night classes for adults) outside school hours in school;</li> <li>Include but not limited to the provision of school academic, sporting, social and cultural education and training including through; <ol style="list-style-type: none"> <li>Formal or informal school recreational, sporting and outdoor activities and competitions whether carried out during or outside school hours;</li> <li>Formal and informal school cultural activities and competitions whether carried out during or outside school hours;</li> <li>The provision of specialist hubs and units (including language immersion units and teen parent units) for students with particular educational requirements or special.</li> </ol> </li> <li>Enable the use of facilities for purposes associated with the education of students including school assemblies. functions.</li> </ol> </li> </ol>

<sup>6</sup> MoE [106.57]

	<p>fair and other gatherings whether carried out during or outside school hours;</p> <p>f. Enable the provision of associated administrative services; car parking and vehicle manoeuvring and health, social service and medical services (including dental clinics and sick bays);</p> <p>g. Enable the housing on site for staff members whose responsibility requires them to live on site (e.g. school caretaker) and their families.</p>
<b>Minister of Education</b>	
<b><u>Designation Unique identifier and map identifier</u></b>	MEDU-7
<b><u>Purpose of the Designation purpose</u></b>	Education <del>P</del> urposes - Secondary School (Years 9-13)
<b>Site identifier</b>	Timaru Boys High School 211 North Street, Timaru <u>Pt Lot 32-38 DP 2069, PT Res 2335, Pt Lot 1-2 and 7 DP 241, Lot 1-2 DP 11343, Lot 1-2 DP 2962, Pt Lot 1 and 7-8 DP 2365<sup>7</sup></u>
<b><del>Lapse date or Identification that designation has been given effect</del></b>	Given effect to (no lapse date)
<b>Designation hierarchy <u>under section 177 of the Resource Management Act</u></b>	Primary
<b>Conditions</b>	No
<b>Additional information</b>	<ol style="list-style-type: none"> <li>Former Designation 50. Rollover designation with minor corrections to schedule (update purpose, <del>remove legal description,</del> add location/address).</li> <li><del>Each of these</del> <u>This</u> designations enables the establishment of a school that is able but is not required to cater for all the school years listed in the designation.</li> <li>“Education Purposes” in the designation purpose means: <ol style="list-style-type: none"> <li>Enable the use of the facilities on the designated site by and for the educational benefit of any school age students (i.e. years 0 to 13) and preschool children stated in the Designation Purpose; regardless of whether they are enrolled at any institution located on that designated;</li> <li>Enable the provision of supervised care and study opportunities for students outside school hours in school;</li> <li>Enable the provision of community education (e.g. night classes for adults) outside school hours in school;</li> <li>Include but not limited to the provision of school academic, sporting, social and cultural education and training including through; <ol style="list-style-type: none"> <li>Formal or informal school recreational, sporting and</li> </ol> </li> </ol> </li> </ol>

<sup>7</sup> MoE [106.59]

	<p>outdoor activities and competitions whether carried out during or outside school hours;</p> <p>ii. Formal and informal school cultural activities and competitions whether carried out during or outside school hours;</p> <p>iii. The provision of specialist hubs and units (including language immersion units and teen parent units) for students with particular educational requirements or special.</p> <p>e. Enable the use of facilities for purposes associated with the education of students including school assemblies, functions, fair and other gatherings whether carried out during or outside school hours;</p> <p>f. Enable the provision of associated administrative services; car parking and vehicle manoeuvring and health, social service and medical services (including dental clinics and sick bays);</p> <p>g. Enable the housing on site for staff members whose responsibility requires them to live on site (e.g. school caretaker) and their families.</p>
<b>Minister of Education</b>	
<b><u>Designation Unique identifier and map identifier</u></b>	MEDU-8
<b><u>Purpose of the Designation purpose</u></b>	Education <del>Pp</del> urposes - Primary School (Years 0-8)
<b>Site identifier</b>	Highfield School 26 Rimu Street, Timaru <u>Lot 2 DP 22916, Lot 3 DP 28617, Lot 1 DP 5286, and Lot 57 DP 208870<sup>8</sup></u>
<b><del>Lapse date or Identification that designation has been given effect</del></b>	Given effect to (no lapse date)
<b>Designation hierarchy <u>under section 177 of the Resource Management Act</u></b>	Primary
<b>Conditions</b>	No
<b>Additional information</b>	<ol style="list-style-type: none"> <li>Former Designation 51. Rollover designation with minor corrections to schedule (update purpose, <del>remove legal description,</del> add location/address).</li> <li><del>Each of these</del> <u>This</u> designation<del>s</del> enables the establishment of a school that is able but is not required to cater for all the school years listed in the designation.</li> <li>"Education Purposes" in the designation purpose means: <ol style="list-style-type: none"> <li>Enable the use of the facilities on the designated site by and for the educational benefit of any school age students (i.e.</li> </ol> </li> </ol>

<sup>8</sup> MoE [106.61]

	<p>years 0 to 13) and preschool children stated in the Designation Purpose; regardless of whether they are enrolled at any institution located on that designated;</p> <ul style="list-style-type: none"> <li>b. Enable the provision of supervised care and study opportunities for students outside school hours in school;</li> <li>c. Enable the provision of community education (e.g. night classes for adults) outside school hours in school;</li> <li>d. Include but not limited to the provision of school academic, sporting, social and cultural education and training including through; <ul style="list-style-type: none"> <li>i. Formal or informal school recreational, sporting and outdoor activities and competitions whether carried out during or outside school hours;</li> <li>ii. Formal and informal school cultural activities and competitions whether carried out during or outside school hours;</li> <li>iii. The provision of specialist hubs and units (including language immersion units and teen parent units) for students with particular educational requirements or special.</li> </ul> </li> <li>e. Enable the use of facilities for purposes associated with the education of students including school assemblies, functions, fair and other gatherings whether carried out during or outside school hours;</li> <li>f. Enable the provision of associated administrative services; car parking and vehicle manoeuvring and health, social service and medical services (including dental clinics and sick bays);</li> <li>g. Enable the housing on site for staff members whose responsibility requires them to live on site (e.g. school caretaker) and their families.</li> </ul>
<b>Minister of Education</b>	
<b><u>Designation Unique identifier and map identifier</u></b>	MEDU-9
<b><u>Purpose of the Designation purpose</u></b>	Education <del>Pp</del> urposes - Secondary School (Years 9-13)
<b>Site identifier</b>	<p>Timaru Girls High School</p> <p><u>68 Cain Street, Timaru</u></p> <p><u>Lot 2 DP 8291, Pt RS 1547, Lot 1-10 DP 3702, Part Lot 1 DP 36, Lots 2-4 DP 36, Part Lots 5-7 DP 36, Lot 8 DP 36, Part Lot 9-10 DP 36, Lot 1 DP 1470, Lot 4 DP 2891 and Part Lots 3, 5, 7 DP 2891<sup>9</sup></u></p>
<b><del>Lapse date or Identification that designation has been given effect</del></b>	Given effect to (no lapse date)

<sup>9</sup> MoE [106.62]

<b>Designation hierarchy <u>under section 177 of the Resource Management Act</u></b>	Primary
<b>Conditions</b>	No
<b>Additional information</b>	<ol style="list-style-type: none"> <li>Former Designation 53. Rollover designation with minor corrections to schedule (update purpose, <del>remove legal description,</del> add location/address).</li> <li><del>Each of these</del> <u>This</u> designations the establishment of a school that is able but is not required to cater for all the school years listed in the designation.</li> <li>“Education Purposes” in the designation purpose means: <ol style="list-style-type: none"> <li>Enable the use of the facilities on the designated site by and for the educational benefit of any school age students (i.e. years 0 to 13) and preschool children stated in the Designation Purpose; regardless of whether they are enrolled at any institution located on that designated;</li> <li>Enable the provision of supervised care and study opportunities for students outside school hours in school;</li> <li>Enable the provision of community education (e.g. night classes for adults) outside school hours in school;</li> <li>Include but not limited to the provision of school academic, sporting, social and cultural education and training including through; <ol style="list-style-type: none"> <li>Formal or informal school recreational, sporting and outdoor activities and competitions whether carried out during or outside school hours;</li> <li>Formal and informal school cultural activities and competitions whether carried out during or outside school hours;</li> <li>The provision of specialist hubs and units (including language immersion units and teen parent units) for students with particular educational requirements or special.</li> </ol> </li> <li>Enable the use of facilities for purposes associated with the education of students including school assemblies, functions, fair and other gatherings whether carried out during or outside school hours;</li> <li>Enable the provision of associated administrative services; car parking and vehicle manoeuvring and health, social service and medical services (including dental clinics and sick bays);</li> <li>Enable the housing on site for staff members whose responsibility requires them to live on site (e.g. school caretaker) and their families.</li> </ol> </li> </ol>
<b>Minister of Education</b>	
<b><u>Designation Unique identifier</u> <del>and map identifier</del></b>	MEDU-10
<b><del>Purpose of the</del> <u>Designation purpose</u></b>	Education <del>P</del> urposes - Primary School (Years 0-8)

Site identifier	Timaru South School 44 Queen Street, Parkside <u>Lots 1-4 DP 9874<sup>10</sup></u>
Lapse date <del>or Identification that designation has been given effect</del>	Given effect to (no lapse date)
Designation hierarchy <u>under section 177 of the Resource Management Act</u>	Primary
Conditions	No
Additional information	<ol style="list-style-type: none"> <li>Former Designation 54. Rollover designation with minor corrections to schedule (update purpose, <del>remove legal description,</del> add location/address).</li> <li><del>Each of these</del> <u>This</u> designation<del>s</del> enables the establishment of a school that is able but is not required to cater for all the school years listed in the designation.</li> <li>“Education Purposes” in the designation purpose means: <ol style="list-style-type: none"> <li>Enable the use of the facilities on the designated site by and for the educational benefit of any school age students (i.e. years 0 to 13) and preschool children stated in the Designation Purpose; regardless of whether they are enrolled at any institution located on that designated;</li> <li>Enable the provision of supervised care and study opportunities for students outside school hours in school;</li> <li>Enable the provision of community education (e.g. night classes for adults) outside school hours in school;</li> <li>Include but not limited to the provision of school academic, sporting, social and cultural education and training including through; <ol style="list-style-type: none"> <li>Formal or informal school recreational, sporting and outdoor activities and competitions whether carried out during or outside school hours;</li> <li>Formal and informal school cultural activities and competitions whether carried out during or outside school hours;</li> <li>The provision of specialist hubs and units (including language immersion units and teen parent units) for students with particular educational requirements or special.</li> </ol> </li> <li>Enable the use of facilities for purposes associated with the education of students including school assemblies, functions, fair and other gatherings whether carried out during or outside school hours;</li> <li>Enable the provision of associated administrative services; car parking and vehicle manoeuvring and health, social service and medical services (including dental clinics and sick bays);</li> <li>Enable the housing on site for staff members whose</li> </ol> </li> </ol>

<sup>10</sup> MoE [106.63]

	responsibility requires them to live on site (e.g. school caretaker) and their families.
<b>Minister of Education</b>	
<b>Unique identifier and map identifier</b>	MEDU-11
<b>Purpose of the designation</b>	Education Purposes – Primary School (Years 0-8)
<b>Site identifier</b>	Timaru South School College Road
<b>Lapse date or Identification that designation has been given effect</b>	Given effect to (no lapse date)
<b>Designation hierarchy</b>	Primary
<b>Conditions</b>	No
<b>Additional information</b>	<ol style="list-style-type: none"> <li>1. Former Designation 65. Rollover designation with minor corrections to schedule (update purpose, remove legal description, add location/address).</li> <li>2. Each of these designations enables the establishment of a school that is able but is not required to cater for all the school years listed in the designation.</li> <li>3. "Education Purposes" in the designation purpose means: <ol style="list-style-type: none"> <li>a. Enable the use of the facilities on the designated site by and for the educational benefit of any school age students (i.e. years 0 to 13) and preschool children stated in the Designation Purpose; regardless of whether they are enrolled at any institution located on that designated;</li> <li>b. Enable the provision of supervised care and study opportunities for students outside school hours in school;</li> <li>c. Enable the provision of community education (e.g. night classes for adults) outside school hours in school;</li> <li>d. Include but not limited to the provision of school academic, sporting, social and cultural education and training including through: <ol style="list-style-type: none"> <li>i. Formal or informal school recreational, sporting and outdoor activities and competitions whether carried out during or outside school hours;</li> <li>ii. Formal and informal school cultural activities and competitions whether carried out during or outside school hours;</li> <li>iii. The provision of specialist hubs and units (including language immersion units and teen parent units) for students with particular educational requirements or special.</li> </ol> </li> <li>e. Enable the use of facilities for purposes associated with the education of students including school assemblies, functions, fair and other gatherings whether carried out during or outside school hours;</li> <li>f. Enable the provision of associated administrative services; car parking and vehicle manoeuvring and health social</li> </ol> </li> </ol>



	<p>service and medical services (including dental clinics and sick bays);</p> <p>g. <del>Enable the housing on site for staff members whose responsibility requires them to live on site (e.g. school caretaker) and their families.</del><sup>11</sup></p>
<b>Minister of Education</b>	
<b><del>Designation Unique identifier and map identifier</del></b>	MEDU-12 <del>1</del>
<b><del>Purpose of the Designation purpose</del></b>	Education <del>Pu</del> rpuses - Primary School (Years 0-8)
<b>Site identifier</b>	Bluestone School (Technical School Site) 3 Grey Road, Timaru <u>Lot 1 DP 399809</u> <sup>12</sup>
<b><del>Lapse date or Identification that designation has been given effect</del></b>	Given effect to (no lapse date)
<b><del>Designation hierarchy under section 177 of the Resource Management Act</del></b>	Primary
<b>Conditions</b>	No
<b>Additional information</b>	<ol style="list-style-type: none"> <li>Former Designation 75. Rollover designation with minor corrections to schedule (update purpose, <del>remove legal description,</del> add location/address).</li> <li><del>Each of these</del> <u>This</u> designation<del>s</del> enables the establishment of a school that is able but is not required to cater for all the school years listed in the designation.</li> <li>“Education Purposes” in the designation purpose means: <ol style="list-style-type: none"> <li>Enable the use of the facilities on the designated site by and for the educational benefit of any school age students (i.e. years 0 to 13) and preschool children stated in the Designation Purpose; regardless of whether they are enrolled at any institution located on that designated;</li> <li>Enable the provision of supervised care and study opportunities for students outside school hours in school;</li> <li>Enable the provision of community education (e.g. night classes for adults) outside school hours in school;</li> <li>Include but not limited to the provision of school academic, sporting, social and cultural education and training including through: <ol style="list-style-type: none"> <li>Formal or informal school recreational, sporting and outdoor activities and competitions whether carried out during or outside school hours;</li> <li>Formal and informal school cultural activities and competitions whether carried out during or outside</li> </ol> </li> </ol> </li> </ol>

<sup>11</sup> MoE [106.64]<sup>12</sup> MoE [106.66]

	<p>school hours;</p> <p>iii. The provision of specialist hubs and units (including language immersion units and teen parent units) for students with particular educational requirements or special.</p> <p>e. Enable the use of facilities for purposes associated with the education of students including school assemblies, functions, fair and other gatherings whether carried out during or outside school hours;</p> <p>f. Enable the provision of associated administrative services; car parking and vehicle manoeuvring and health, social service and medical services (including dental clinics and sick bays);</p> <p>g. Enable the housing on site for staff members whose responsibility requires them to live on site (e.g. school caretaker) and their families.</p>
<b>Minister of Education</b>	
<b><u>Designation Unique identifier and map identifier</u></b>	MEDU-132
<b><u>Purpose of the Designation purpose</u></b>	Education Purposes - Secondary School (Years 9-13)
<b>Site identifier</b>	Opihi College 83 Richard Pearce Drive, Temuka <u>Part RS 2483 and Part RS 2484</u> <sup>13</sup>
<b><u>Lapse date or Identification that designation has been given effect</u></b>	Given effect to (no lapse date)
<b><u>Designation hierarchy under section 177 of the Resource Management Act</u></b>	Primary
<b>Conditions</b>	No
<b>Additional information</b>	<ol style="list-style-type: none"> <li>Former Designation 138. Rollover designation with minor corrections to schedule (update purpose, <del>remove legal description</del>, add location/address).</li> <li><del>Each of these</del> <u>This</u> designation enables the establishment of a school that is able but is not required to cater for all the school years listed in the designation.</li> <li>“Education Purposes” in the designation purpose means: <ol style="list-style-type: none"> <li>Enable the use of the facilities on the designated site by and for the educational benefit of any school age students (i.e. years 0 to 13) and preschool children stated in the Designation Purpose; regardless of whether they are enrolled at any institution located on that designated;</li> <li>Enable the provision of supervised care and study opportunities for students outside school hours in school:</li> </ol> </li> </ol>

<sup>13</sup> MoE [106.67]

	<ul style="list-style-type: none"> <li>c. Enable the provision of community education (e.g. night classes for adults) outside school hours in school;</li> <li>d. Include but not limited to the provision of school academic, sporting, social and cultural education and training including through; <ul style="list-style-type: none"> <li>i. Formal or informal school recreational, sporting and outdoor activities and competitions whether carried out during or outside school hours;</li> <li>ii. Formal and informal school cultural activities and competitions whether carried out during or outside school hours;</li> <li>iii. The provision of specialist hubs and units (including language immersion units and teen parent units) for students with particular educational requirements or special.</li> </ul> </li> <li>e. Enable the use of facilities for purposes associated with the education of students including school assemblies, functions, fair and other gatherings whether carried out during or outside school hours;</li> <li>f. Enable the provision of associated administrative services; car parking and vehicle manoeuvring and health, social service and medical services (including dental clinics and sick bays);</li> <li>g. Enable the housing on site for staff members whose responsibility requires them to live on site (e.g. school caretaker) and their families.</li> </ul>
<b>Minister of Education</b>	
<b><u>Designation Unique identifier and map identifier</u></b>	MEDU-143
<b><u>Purpose of the Designation purpose</u></b>	Education Purposes - Primary School (Years 0-8)
<b>Site identifier</b>	Barton Rural School 462 Fairview Road, Timaru <u>PT RS 10702</u> <sup>14</sup>
<b><u>Lapse date or Identification that designation has been given effect</u></b>	Given effect to (no lapse date)
<b><u>Designation hierarchy under section 177 of the Resource Management Act</u></b>	Primary
<b>Conditions</b>	No
<b>Additional information</b>	<ol style="list-style-type: none"> <li>Former Designation 149. Rollover designation with minor corrections to schedule (update purpose, <del>remove legal description</del>, add location/address).</li> <li><del>Each of these</del> This designation enables the establishment of a</li> </ol>

<sup>14</sup> MoE [106.68]

	<p>school that is able but is not required to cater for all the school years listed in the designation.</p> <p>3. “Education Purposes” in the designation purpose means:</p> <ol style="list-style-type: none"> <li>Enable the use of the facilities on the designated site by and for the educational benefit of any school age students (i.e. years 0 to 13) and preschool children stated in the Designation Purpose; regardless of whether they are enrolled at any institution located on that designated;</li> <li>Enable the provision of supervised care and study opportunities for students outside school hours in school;</li> <li>Enable the provision of community education (e.g. night classes for adults) outside school hours in school;</li> <li>Include but not limited to the provision of school academic, sporting, social and cultural education and training including through; <ol style="list-style-type: none"> <li>Formal or informal school recreational, sporting and outdoor activities and competitions whether carried out during or outside school hours;</li> <li>Formal and informal school cultural activities and competitions whether carried out during or outside school hours;</li> <li>The provision of specialist hubs and units (including language immersion units and teen parent units) for students with particular educational requirements or special.</li> </ol> </li> <li>Enable the use of facilities for purposes associated with the education of students including school assemblies, functions, fair and other gatherings whether carried out during or outside school hours;</li> <li>Enable the provision of associated administrative services; car parking and vehicle manoeuvring and health, social service and medical services (including dental clinics and sick bays);</li> <li>Enable the housing on site for staff members whose responsibility requires them to live on site (e.g. school caretaker) and their families.</li> </ol>
<b>Minister of Education</b>	
<b><u>Designation Unique identifier and map identifier</u></b>	MEDU-154
<b><u>Purpose of the Designation purpose</u></b>	Education Purposes - Primary School (Years 0-8)
<b>Site identifier</b>	Beaconsfield School 40 Guscott Road, RD2, Timaru <u>Pt RES 3700</u> <sup>15</sup>
<b><u>Lapse date or Identification that designation has been given effect</u></b>	Given effect to (no lapse date)

<sup>15</sup> MoE [106.69]

<b>Designation hierarchy <u>under section 177 of the Resource Management Act</u></b>	Primary
<b>Conditions</b>	No
<b>Additional information</b>	<ol style="list-style-type: none"> <li>Former Designation 150. Rollover designation with minor corrections to schedule (update purpose, <del>remove legal description,</del> add location/address).</li> <li><del>Each of these</del> <u>This</u> designation enables the establishment of a school that is able but is not required to cater for all the school years listed in the designation.</li> <li>"Education Purposes" in the designation purpose means: <ol style="list-style-type: none"> <li>Enable the use of the facilities on the designated site by and for the educational benefit of any school age students (i.e. years 0 to 13) and preschool children stated in the Designation Purpose; regardless of whether they are enrolled at any institution located on that designated;</li> <li>Enable the provision of supervised care and study opportunities for students outside school hours in school;</li> <li>Enable the provision of community education (e.g. night classes for adults) outside school hours in school;</li> <li>Include but not limited to the provision of school academic, sporting, social and cultural education and training including through; <ol style="list-style-type: none"> <li>Formal or informal school recreational, sporting and outdoor activities and competitions whether carried out during or outside school hours;</li> <li>Formal and informal school cultural activities and competitions whether carried out during or outside school hours;</li> <li>The provision of specialist hubs and units (including language immersion units and teen parent units) for students with particular educational requirements or special.</li> </ol> </li> <li>Enable the use of facilities for purposes associated with the education of students including school assemblies, functions, fair and other gatherings whether carried out during or outside school hours;</li> <li>Enable the provision of associated administrative services; car parking and vehicle manoeuvring and health, social service and medical services (including dental clinics and sick bays);</li> <li>Enable the housing on site for staff members whose responsibility requires them to live on site (e.g. school caretaker) and their families.</li> </ol> </li> </ol>
<b>Minister of Education</b>	
<b><u>Designation Unique identifier</u> <del>and map identifier</del></b>	MEDU-165
<b><del>Purpose of the</del> <u>Designation purpose</u></b>	Education <del>P</del> urposes - Primary School (Years 0-8)

Site identifier	Woodbury School 559 Woodbury Road, Geraldine <u>Part Lots 6 and 9 DP 887<sup>16</sup></u>
<del>Lapse date or Identification that designation has been given effect</del>	Given effect to (no lapse date)
Designation hierarchy <u>under section 177 of the Resource Management Act</u>	Primary
Conditions	No
Additional information	<ol style="list-style-type: none"> <li>Former Designation 157. Rollover designation with minor corrections to schedule (update purpose, <del>remove legal description,</del> add location/address).</li> <li><del>Each of these</del> <u>This</u> designation enables the establishment of a school that is able but is not required to cater for all the school years listed in the designation.</li> <li>“Education Purposes” in the designation purpose means: <ol style="list-style-type: none"> <li>Enable the use of the facilities on the designated site by and for the educational benefit of any school age students (i.e. years 0 to 13) and preschool children stated in the Designation Purpose; regardless of whether they are enrolled at any institution located on that designated;</li> <li>Enable the provision of supervised care and study opportunities for students outside school hours in school;</li> <li>Enable the provision of community education (e.g. night classes for adults) outside school hours in school;</li> <li>Include but not limited to the provision of school academic, sporting, social and cultural education and training including through; <ol style="list-style-type: none"> <li>Formal or informal school recreational, sporting and outdoor activities and competitions whether carried out during or outside school hours;</li> <li>Formal and informal school cultural activities and competitions whether carried out during or outside school hours;</li> <li>The provision of specialist hubs and units (including language immersion units and teen parent units) for students with particular educational requirements or special.</li> </ol> </li> <li>Enable the use of facilities for purposes associated with the education of students including school assemblies, functions, fair and other gatherings whether carried out during or outside school hours;</li> <li>Enable the provision of associated administrative services; car parking and vehicle manoeuvring and health, social service and medical services (including dental clinics and sick bays);</li> <li>Enable the housing on site for staff members whose</li> </ol> </li> </ol>

<sup>16</sup> MoE [106.70]

	responsibility requires them to live on site (e.g. school caretaker) and their families.
<b>Minister of Education</b>	
<b><u>Designation Unique identifier and map identifier</u></b>	MEDU-176
<b><u>Purpose of the Designation purpose</u></b>	Education <del>P</del> urposes - Secondary School (Years 9-13)
<b>Site identifier</b>	Geraldine High School 93 and 99 McKenzie Street, Geraldine <u>Lot 1 DP 9064, Part Lot 21 DP 1009, and Riverbed Survey Office Plan 15388<sup>17</sup></u>
<b><del>Lapse date or Identification that designation has been given effect</del></b>	Given effect to (no lapse date)
<b>Designation hierarchy <u>under section 177 of the Resource Management Act</u></b>	Primary
<b>Conditions</b>	No
<b>Additional information</b>	<ol style="list-style-type: none"> <li>Former Designation 164. Rollover designation with minor corrections to schedule (update purpose, <del>remove legal description</del>, add location/address).</li> <li><del>Each of these</del> <u>This</u> designations enables the establishment of a school that is able but is not required to cater for all the school years listed in the designation.</li> <li>"Education Purposes" in the designation purpose means: <ol style="list-style-type: none"> <li>Enable the use of the facilities on the designated site by and for the educational benefit of any school age students (i.e. years 0 to 13) and preschool children stated in the Designation Purpose; regardless of whether they are enrolled at any institution located on that designated;</li> <li>Enable the provision of supervised care and study opportunities for students outside school hours in school;</li> <li>Enable the provision of community education (e.g. night classes for adults) outside school hours in school;</li> <li>Include but not limited to the provision of school academic, sporting, social and cultural education and training including through; <ol style="list-style-type: none"> <li>Formal or informal school recreational, sporting and outdoor activities and competitions whether carried out during or outside school hours;</li> <li>Formal and informal school cultural activities and competitions whether carried out during or outside school hours;</li> <li>The provision of specialist hubs and units (including language immersion units and teen parent units) for</li> </ol> </li> </ol> </li> </ol>

<sup>17</sup> MoE [106.71]

	<p>students with particular educational requirements or special.</p> <p>e. Enable the use of facilities for purposes associated with the education of students including school assemblies, functions, fair and other gatherings whether carried out during or outside school hours;</p> <p>f. Enable the provision of associated administrative services; car parking and vehicle manoeuvring and health, social service and medical services (including dental clinics and sick bays);</p> <p>g. Enable the housing on site for staff members whose responsibility requires them to live on site (e.g. school caretaker) and their families.</p>
<b>Minister of Education</b>	
<b><u>Designation Unique identifier and map identifier</u></b>	MEDU-18Z
<b><u>Purpose of the Designation purpose</u></b>	Education Purposes - Primary School (Years 0-8)
<b>Site identifier</b>	Geraldine Primary School 73 Wilson Street, Geraldine <u>RES 2625</u> <sup>18</sup>
<b><u>Lapse date or Identification that designation has been given effect</u></b>	Given effect to (no lapse date)
<b><u>Designation hierarchy under section 177 of the Resource Management Act</u></b>	Primary
<b>Conditions</b>	No
<b>Additional information</b>	<ol style="list-style-type: none"> <li>Former Designation 165. Rollover designation with minor corrections to schedule (update purpose, <del>remove legal description,</del> add location/address).</li> <li><del>Each of these</del> <u>This</u> designation enables the establishment of a school that is able but is not required to cater for all the school years listed in the designation.</li> <li>"Education Purposes" in the designation purpose means: <ol style="list-style-type: none"> <li>Enable the use of the facilities on the designated site by and for the educational benefit of any school age students (i.e. years 0 to 13) and preschool children stated in the Designation Purpose; regardless of whether they are enrolled at any institution located on that designated;</li> <li>Enable the provision of supervised care and study opportunities for students outside school hours in school;</li> <li>Enable the provision of community education (e.g. night classes for adults) outside school hours in school;</li> <li>Include but not limited to the provision of school academic.</li> </ol> </li> </ol>

<sup>18</sup> MoE [106.72]



	<p>sporting, social and cultural education and training including through;</p> <ul style="list-style-type: none"> <li>i. Formal or informal school recreational, sporting and outdoor activities and competitions whether carried out during or outside school hours;</li> <li>ii. Formal and informal school cultural activities and competitions whether carried out during or outside school hours;</li> <li>iii. The provision of specialist hubs and units (including language immersion units and teen parent units) for students with particular educational requirements or special.</li> </ul> <p>e. Enable the use of facilities for purposes associated with the education of students including school assemblies, functions, fair and other gatherings whether carried out during or outside school hours;</p> <p>f. Enable the provision of associated administrative services; car parking and vehicle manoeuvring and health, social service and medical services (including dental clinics and sick bays);</p> <p>g. Enable the housing on site for staff members whose responsibility requires them to live on site (e.g. school caretaker) and their families.</p>
<b>Minister of Education</b>	
<b><u>Designation Unique identifier and map identifier</u></b>	MEDU-198
<b><u>Purpose of the Designation purpose</u></b>	Education <del>P</del> urposes - Primary School (Years 0-8)
<b>Site identifier</b>	Winchester Rural School 14 Rise Road, Winchester-Milford <u>RES 2775 and Section 1 SO 16245</u> <sup>19</sup>
<b><u>Lapse date or Identification that designation has been given effect</u></b>	Given effect to (no lapse date)
<b><u>Designation hierarchy under section 177 of the Resource Management Act</u></b>	Primary
<b>Conditions</b>	No
<b>Additional information</b>	<ol style="list-style-type: none"> <li>Former Designation 166. Rollover designation with minor corrections to schedule (update purpose, <del>remove legal description</del>, add location/address).</li> <li><del>Each of these</del> <u>This</u> designation enables the establishment of a school that is able but is not required to cater for all the school years listed in the designation.</li> <li>"Education Purposes" in the designation purpose means:</li> </ol>

<sup>19</sup> MoE [106.73]

	<ul style="list-style-type: none"> <li>a. Enable the use of the facilities on the designated site by and for the educational benefit of any school age students (i.e. years 0 to 13) and preschool children stated in the Designation Purpose; regardless of whether they are enrolled at any institution located on that designated;</li> <li>b. Enable the provision of supervised care and study opportunities for students outside school hours in school;</li> <li>c. Enable the provision of community education (e.g. night classes for adults) outside school hours in school;</li> <li>d. Include but not limited to the provision of school academic, sporting, social and cultural education and training including through; <ul style="list-style-type: none"> <li>i. Formal or informal school recreational, sporting and outdoor activities and competitions whether carried out during or outside school hours;</li> <li>ii. Formal and informal school cultural activities and competitions whether carried out during or outside school hours;</li> <li>iii. The provision of specialist hubs and units (including language immersion units and teen parent units) for students with particular educational requirements or special.</li> </ul> </li> <li>e. Enable the use of facilities for purposes associated with the education of students including school assemblies, functions, fair and other gatherings whether carried out during or outside school hours;</li> <li>f. Enable the provision of associated administrative services; car parking and vehicle manoeuvring and health, social service and medical services (including dental clinics and sick bays);</li> <li>g. Enable the housing on site for staff members whose responsibility requires them to live on site (e.g. school caretaker) and their families.</li> </ul>
<b>Minister of Education</b>	
<b><u>Designation Unique identifier and map identifier</u></b>	MEDU-2019
<b><u>Purpose of the Designation purpose</u></b>	Education Purposes - Primary School (Years 0-8)
<b>Site identifier</b>	Temuka Primary School 9 Hayhurst Street, Temuka <u>Section 188, 190, 192, 199-202, 223-231, 233 Town of Arowhenua, and RES 1819<sup>20</sup></u>
<b><u>Lapse date or Identification that designation has been given effect</u></b>	Given effect to (no lapse date)
<b>Designation hierarchy <u>under section</u></b>	Primary

<sup>20</sup> MoE [106.74]

<u>177 of the Resource Management Act</u>	
<b>Conditions</b>	No
<b>Additional information</b>	<ol style="list-style-type: none"> <li>1. Former Designation 180. Rollover designation with minor corrections to schedule (update purpose, <del>remove legal description</del>, add location/address, adjust designation boundary).</li> <li>2. <del>Each of these</del> <u>This</u> designation enables the establishment of a school that is able but is not required to cater for all the school years listed in the designation.</li> <li>3. "Education Purposes" in the designation purpose means: <ol style="list-style-type: none"> <li>a. Enable the use of the facilities on the designated site by and for the educational benefit of any school age students (i.e. years 0 to 13) and preschool children stated in the Designation Purpose; regardless of whether they are enrolled at any institution located on that designated;</li> <li>b. Enable the provision of supervised care and study opportunities for students outside school hours in school;</li> <li>c. Enable the provision of community education (e.g. night classes for adults) outside school hours in school;</li> <li>d. Include but not limited to the provision of school academic, sporting, social and cultural education and training including through; <ol style="list-style-type: none"> <li>i. Formal or informal school recreational, sporting and outdoor activities and competitions whether carried out during or outside school hours;</li> <li>ii. Formal and informal school cultural activities and competitions whether carried out during or outside school hours;</li> <li>iii. The provision of specialist hubs and units (including language immersion units and teen parent units) for students with particular educational requirements or special.</li> </ol> </li> <li>e. Enable the use of facilities for purposes associated with the education of students including school assemblies, functions, fair and other gatherings whether carried out during or outside school hours;</li> <li>f. Enable the provision of associated administrative services; car parking and vehicle manoeuvring and health, social service and medical services (including dental clinics and sick bays);</li> <li>g. Enable the housing on site for staff members whose responsibility requires them to live on site (e.g. school caretaker) and their families.</li> </ol> </li> </ol>
<b>Minister of Education</b>	
<u>Designation Unique identifier</u> <del>and map identifier</del>	MEDU-240
<del>Purpose of the</del> <u>Designation purpose</u>	Education <del>Pu</del> poses - Primary School (Years 0-8)
<b>Site identifier</b>	Arowhenua Māori School

	33 Huirapa Street, Temuka <u>Section 1 SO 541073<sup>21</sup></u>
<b>Lapse date</b> <del>or Identification that designation has been given effect</del>	Given effect to (no lapse date)
<b>Designation hierarchy</b> <u>under section 177 of the Resource Management Act</u>	Primary
<b>Conditions</b>	No
<b>Additional information</b>	<ol style="list-style-type: none"> <li>Former Designation 181. Rollover designation with minor corrections to schedule (update purpose, <del>remove legal description,</del> add location/address).</li> <li><del>Each of these</del> <u>This</u> designations enables the establishment of a school that is able but is not required to cater for all the school years listed in the designation.</li> <li>“Education Purposes” in the designation purpose means: <ol style="list-style-type: none"> <li>Enable the use of the facilities on the designated site by and for the educational benefit of any school age students (i.e. years 0 to 13) and preschool children stated in the Designation Purpose; regardless of whether they are enrolled at any institution located on that designated;</li> <li>Enable the provision of supervised care and study opportunities for students outside school hours in school;</li> <li>Enable the provision of community education (e.g. night classes for adults) outside school hours in school;</li> <li>Include but not limited to the provision of school academic, sporting, social and cultural education and training including through; <ol style="list-style-type: none"> <li>Formal or informal school recreational, sporting and outdoor activities and competitions whether carried out during or outside school hours;</li> <li>Formal and informal school cultural activities and competitions whether carried out during or outside school hours;</li> <li>The provision of specialist hubs and units (including language immersion units and teen parent units) for students with particular educational requirements or special.</li> </ol> </li> <li>Enable the use of facilities for purposes associated with the education of students including school assemblies, functions, fair and other gatherings whether carried out during or outside school hours;</li> <li>Enable the provision of associated administrative services; car parking and vehicle manoeuvring and health, social service and medical services (including dental clinics and sick bays);</li> <li>Enable the housing on site for staff members whose responsibility requires them to live on site (e.g. school</li> </ol> </li> </ol>

<sup>21</sup> MoE [106.75]

	caretaker) and their families.
<b>Minister of Education</b>	
<b><u>Designation Unique identifier and map identifier</u></b>	MEDU-221
<b><u>Purpose of the Designation purpose</u></b>	Education-Purposes - Primary and Secondary School (Years 0-13)
<b>Site identifier</b>	Pleasant Point Primary School 31 Halstead Road, Pleasant Point <u>Sections 1-4 SO 358845, Part 1 Lot 1 DP 5504, and Section 5 SO 358845</u> <sup>22</sup>
<b><u>Lapse date or Identification that designation has been given effect</u></b>	Given effect to (no lapse date)
<b><u>Designation hierarchy under section 177 of the Resource Management Act</u></b>	Primary
<b>Conditions</b>	No
<b>Additional information</b>	<ol style="list-style-type: none"> <li>Former Designation 183. Rollover designation with minor corrections to schedule (update purpose, <del>remove legal description</del>, add location/address).</li> <li><del>Each of these</del> <u>This</u> designations enables the establishment of a school that is able but is not required to cater for all the school years listed in the designation.</li> <li>"Education Purposes" in the designation purpose means: <ol style="list-style-type: none"> <li>Enable the use of the facilities on the designated site by and for the educational benefit of any school age students (i.e. years 0 to 13) and preschool children stated in the Designation Purpose; regardless of whether they are enrolled at any institution located on that designated;</li> <li>Enable the provision of supervised care and study opportunities for students outside school hours in school;</li> <li>Enable the provision of community education (e.g. night classes for adults) outside school hours in school;</li> <li>Include but not limited to the provision of school academic, sporting, social and cultural education and training including through; <ol style="list-style-type: none"> <li>Formal or informal school recreational, sporting and outdoor activities and competitions whether carried out during or outside school hours;</li> <li>Formal and informal school cultural activities and competitions whether carried out during or outside school hours;</li> <li>The provision of specialist hubs and units (including language immersion units and teen parent units) for students with particular educational requirements or</li> </ol> </li> </ol> </li> </ol>

<sup>22</sup> MoE [106.76]

	<p>special.</p> <p>e. Enable the use of facilities for purposes associated with the education of students including school assemblies, functions, fair and other gatherings whether carried out during or outside school hours;</p> <p>f. Enable the provision of associated administrative services; car parking and vehicle manoeuvring and health, social service and medical services (including dental clinics and sick bays);</p> <p>g. Enable the housing on site for staff members whose responsibility requires them to live on site (e.g. school caretaker) and their families.</p>
<b>Minister of Education</b>	
<b><u>Designation Unique identifier and map identifier</u></b>	MEDU-23 <del>2</del>
<b><u>Purpose of the Designation purpose</u></b>	Education <del>P</del> urposes - Intermediate and Secondary School (Years 7-13)
<b>Site identifier</b>	Craighead Diocesan 1 Wrights Ave, Timaru <u>Lot 1 DP 40947, Lots 36 and 37 DP 3110, Lots 1-3 DP 3203, Part Lots 1-2 DP 6273, and Part Lots 8-9 DP 9881<sup>23</sup></u>
<b><u>Lapse date or Identification that designation has been given effect</u></b>	Given effect to (no lapse date)
<b><u>Designation hierarchy under section 177 of the Resource Management Act</u></b>	Primary
<b>Conditions</b>	No
<b>Additional information</b>	<ol style="list-style-type: none"> <li>Former Designation 193. Rollover designation with minor corrections to schedule (update purpose, <del>remove legal description,</del> add location/address).</li> <li><del>Each of these</del> <u>This</u> designation<del>e</del> enables the establishment of a school that is able but is not required to cater for all the school years listed in the designation.</li> <li>"Education Purposes" in the designation purpose means: <ol style="list-style-type: none"> <li>Enable the use of the facilities on the designated site by and for the educational benefit of any school age students (i.e. years 0 to 13) and preschool children stated in the Designation Purpose; regardless of whether they are enrolled at any institution located on that designated;</li> <li>Enable the provision of supervised care and study opportunities for students outside school hours in school;</li> <li>Enable the provision of community education (e.g. night classes for adults) outside school hours in school;</li> <li>Include but not limited to the provision of school academic.</li> </ol> </li> </ol>

<sup>23</sup> MoE [106.77]

	<p>sporting, social and cultural education and training including through;</p> <ul style="list-style-type: none"> <li>i. Formal or informal school recreational, sporting and outdoor activities and competitions whether carried out during or outside school hours;</li> <li>ii. Formal and informal school cultural activities and competitions whether carried out during or outside school hours;</li> <li>iii. The provision of specialist hubs and units (including language immersion units and teen parent units) for students with particular educational requirements or special.</li> </ul> <p>e. Enable the use of facilities for purposes associated with the education of students including school assemblies, functions, fair and other gatherings whether carried out during or outside school hours;</p> <p>f. Enable the provision of associated administrative services; car parking and vehicle manoeuvring and health, social service and medical services (including dental clinics and sick bays);</p> <p>g. Enable the housing on site for staff members whose responsibility requires them to live on site (e.g. school caretaker) and their families.</p>
<b>Minister of Education</b>	
<b><u>Designation Unique identifier and map identifier</u></b>	MEDU-243
<b><u>Purpose of the Designation purpose</u></b>	Education <del>P</del> urposes - Primary and Intermediate School (Years 1-8)
<b>Site identifier</b>	St Joseph's School, Timaru 50 Kelvin Street, Timaru <u>Lot 1 DP 46091</u> <sup>24</sup>
<b><u>Lapse date or Identification that designation has been given effect</u></b>	Given effect to (no lapse date)
<b><u>Designation hierarchy under section 177 of the Resource Management Act</u></b>	Primary
<b>Conditions</b>	<del>No</del> <u>Yes MEDU-23 Conditions</u> <sup>25</sup>
<b>Additional information</b>	<ol style="list-style-type: none"> <li>1. New designation.</li> <li>2. <del>Each of these</del> <u>This</u> designation<del>e</del> enables the establishment of a school that is able but is not required to cater for all the school years listed in the designation.</li> <li>3. "Education Purposes" in the designation purpose means: <ol style="list-style-type: none"> <li>a. Enable the use of the facilities on the designated site hv and</li> </ol> </li> </ol>

<sup>24</sup> MoE [106.78]<sup>25</sup> Recommended Modification

	<p>for the educational benefit of any school age students (i.e. years 0 to 13) and preschool children stated in the Designation Purpose; regardless of whether they are enrolled at any institution located on that designated;</p> <ul style="list-style-type: none"> <li>b. Enable the provision of supervised care and study opportunities for students outside school hours in school;</li> <li>c. Enable the provision of community education (e.g. night classes for adults) outside school hours in school;</li> <li>d. Include but not limited to the provision of school academic, sporting, social and cultural education and training including through; <ul style="list-style-type: none"> <li>i. Formal or informal school recreational, sporting and outdoor activities and competitions whether carried out during or outside school hours;</li> <li>ii. Formal and informal school cultural activities and competitions whether carried out during or outside school hours;</li> <li>iii. The provision of specialist hubs and units (including language immersion units and teen parent units) for students with particular educational requirements or special.</li> </ul> </li> <li>e. Enable the use of facilities for purposes associated with the education of students including school assemblies, functions, fair and other gatherings whether carried out during or outside school hours;</li> <li>f. Enable the provision of associated administrative services; car parking and vehicle manoeuvring and health, social service and medical services (including dental clinics and sick bays);</li> <li>g. Enable the housing on site for staff members whose responsibility requires them to live on site (e.g. school caretaker) and their families.</li> </ul>
<b>Minister of Education</b>	
<b><u>Designation Unique identifier and map identifier</u></b>	MEDU-254
<b><u>Purpose of the Designation purpose</u></b>	Education Purposes - Primary and Intermediate School (Years 1-8)
<b>Site identifier</b>	St Joseph's School, Pleasant Point 29 Afghan Street, Pleasant Point <u>Lots 12-14 DP 365, and Part Lot 11 DP 365<sup>26</sup></u>
<b><u>Lapse date or Identification that designation has been given effect</u></b>	Given effect to (no lapse date)
<b><u>Designation hierarchy under section 177 of the Resource Management Act</u></b>	Primary

<sup>26</sup> MoE [106.79]



Conditions	No Yes MEDU-24 Conditions <sup>27</sup>
Additional information	<ol style="list-style-type: none"> <li>1. New designation.</li> <li>2. <del>Each of these</del> <u>This</u> designation enables the establishment of a school that is able but is not required to cater for all the school years listed in the designation.</li> <li>3. "Education Purposes" in the designation purpose means: <ol style="list-style-type: none"> <li>a. Enable the use of the facilities on the designated site by and for the educational benefit of any school age students (i.e. years 0 to 13) and preschool children stated in the Designation Purpose; regardless of whether they are enrolled at any institution located on that designated;</li> <li>b. Enable the provision of supervised care and study opportunities for students outside school hours in school;</li> <li>c. Enable the provision of community education (e.g. night classes for adults) outside school hours in school;</li> <li>d. Include but not limited to the provision of school academic, sporting, social and cultural education and training including through; <ol style="list-style-type: none"> <li>i. Formal or informal school recreational, sporting and outdoor activities and competitions whether carried out during or outside school hours;</li> <li>ii. Formal and informal school cultural activities and competitions whether carried out during or outside school hours;</li> <li>iii. The provision of specialist hubs and units (including language immersion units and teen parent units) for students with particular educational requirements or special.</li> </ol> </li> <li>e. Enable the use of facilities for purposes associated with the education of students including school assemblies, functions, fair and other gatherings whether carried out during or outside school hours;</li> <li>f. Enable the provision of associated administrative services; car parking and vehicle manoeuvring and health, social service and medical services (including dental clinics and sick bays);</li> <li>g. Enable the housing on site for staff members whose responsibility requires them to live on site (e.g. school caretaker) and their families.</li> </ol> </li> </ol>
<b>Minister of Education</b>	
<del>Designation Unique identifier and map identifier</del>	MEDU-265
<del>Purpose of the Designation purpose</del>	Education <del>Pp</del> urposes - Primary and Intermediate School (Years 1-8)
Site identifier	St Joseph's School, Temuka 31 Wilkin Street, Temuka <u>Sections 130-137, 143-145 TN of Arowhenua, and Part Lots 21, 22 and 23 DP 76<sup>28</sup></u>

<sup>27</sup> Recommended Modification

<b>Lapse date</b> <del>or Identification that designation has been given effect</del>	Given effect to (no lapse date)
<b>Designation hierarchy</b> <u>under section 177 of the Resource Management Act</u>	Primary
<b>Conditions</b>	<del>No</del> <u>Yes</u> MEDU-25 Conditions <sup>29</sup>
<b>Additional information</b>	<ol style="list-style-type: none"> <li>1. New designation.</li> <li>2. <del>Each of these</del> <u>This</u> designation<del>s</del> enables the establishment of a school that is able but is not required to cater for all the school years listed in the designation.</li> <li>3. "Education Purposes" in the designation purpose means: <ol style="list-style-type: none"> <li>a. Enable the use of the facilities on the designated site by and for the educational benefit of any school age students (i.e. years 0 to 13) and preschool children stated in the Designation Purpose; regardless of whether they are enrolled at any institution located on that designated;</li> <li>b. Enable the provision of supervised care and study opportunities for students outside school hours in school;</li> <li>c. Enable the provision of community education (e.g. night classes for adults) outside school hours in school;</li> <li>d. Include but not limited to the provision of school academic, sporting, social and cultural education and training including through; <ol style="list-style-type: none"> <li>i. Formal or informal school recreational, sporting and outdoor activities and competitions whether carried out during or outside school hours;</li> <li>ii. Formal and informal school cultural activities and competitions whether carried out during or outside school hours;</li> <li>iii. The provision of specialist hubs and units (including language immersion units and teen parent units) for students with particular educational requirements or special.</li> </ol> </li> <li>e. Enable the use of facilities for purposes associated with the education of students including school assemblies, functions, fair and other gatherings whether carried out during or outside school hours;</li> <li>f. Enable the provision of associated administrative services; car parking and vehicle manoeuvring and health, social service and medical services (including dental clinics and sick bays);</li> <li>g. Enable the housing on site for staff members whose responsibility requires them to live on site (e.g. school caretaker) and their families.</li> </ol> </li> </ol>

<sup>28</sup> MoE [106.80]<sup>29</sup> Recommended Modification

Minister of Education	
<b>Designation Unique identifier and map identifier</b>	MEDU-276
<b>Purpose of the Designation purpose</b>	Education Purposes - High School (Years 9-13)
<b>Site identifier</b>	Roncalli College, Timaru 19 Wellington Street, Timaru <u>Lot 2 DP 45190, Lot 3 DP 10699, and Part Lots 21-23 DP 76<sup>30</sup></u>
<b>Lapse date or Identification that designation has been given effect</b>	Given effect to (no lapse date)
<b>Designation hierarchy under section 177 of the Resource Management Act</b>	Primary
<b>Conditions</b>	<del>No</del> Yes – MEDU-26 Conditions <sup>31</sup>
<b>Additional information</b>	<ol style="list-style-type: none"> <li>1. New designation.</li> <li>2. <del>Each of these</del> This designation enables the establishment of a school that is able but is not required to cater for all the school years listed in the designation.</li> <li>3. "Education Purposes" in the designation purpose means: <ol style="list-style-type: none"> <li>a. Enable the use of the facilities on the designated site by and for the educational benefit of any school age students (i.e. years 0 to 13) and preschool children stated in the Designation Purpose; regardless of whether they are enrolled at any institution located on that designated;</li> <li>b. Enable the provision of supervised care and study opportunities for students outside school hours in school;</li> <li>c. Enable the provision of community education (e.g. night classes for adults) outside school hours in school;</li> <li>d. Include but not limited to the provision of school academic, sporting, social and cultural education and training including through; <ol style="list-style-type: none"> <li>i. Formal or informal school recreational, sporting and outdoor activities and competitions whether carried out during or outside school hours;</li> <li>ii. Formal and informal school cultural activities and competitions whether carried out during or outside school hours;</li> <li>iii. The provision of specialist hubs and units (including language immersion units and teen parent units) for students with particular educational requirements or special.</li> </ol> </li> <li>e. Enable the use of facilities for purposes associated with the education of students including school assemblies, functions, fair and other gatherings whether carried out during or</li> </ol> </li> </ol>

<sup>30</sup> MoE [106.82]<sup>31</sup> Recommended Modification

	<p>outside school hours;</p> <p>f. Enable the provision of associated administrative services; car parking and vehicle manoeuvring and health, social service and medical services (including dental clinics and sick bays);</p> <p>g. Enable the housing on site for staff members whose responsibility requires them to live on site (e.g. school caretaker) and their families.</p>
<b>Minister of Education</b>	
<b><del>Designation Unique identifier and map identifier</del></b>	MEDU-2827
<b><del>Purpose of the Designation purpose</del></b>	Education <del>Pu</del> poses - Primary School (Years 1-8)
<b>Site identifier</b>	Scared Heart <u>Primary</u> School, Timaru 54 Heaton Street, Timaru <u>Lot 1 DP 60274</u> <sup>32</sup>
<b><del>Lapse date or Identification that designation has been given effect</del></b>	Given effect to (no lapse date)
<b>Designation hierarchy <u>under section 177 of the Resource Management Act</u></b>	Primary
<b>Conditions</b>	<del>No</del> <u>Yes MEDU-27 Conditions</u> <sup>33</sup>
<b>Additional information</b>	<ol style="list-style-type: none"> <li>1. New designation.</li> <li>2. <del>Each of these</del> <u>This</u> designation enables the establishment of a school that is able but is not required to cater for all the school years listed in the designation.</li> <li>3. "Education Purposes" in the designation purpose means: <ol style="list-style-type: none"> <li>a. Enable the use of the facilities on the designated site by and for the educational benefit of any school age students (i.e. years 0 to 13) and preschool children stated in the Designation Purpose; regardless of whether they are enrolled at any institution located on that designated;</li> <li>b. Enable the provision of supervised care and study opportunities for students outside school hours in school;</li> <li>c. Enable the provision of community education (e.g. night classes for adults) outside school hours in school;</li> <li>d. Include but not limited to the provision of school academic, sporting, social and cultural education and training including through; <ol style="list-style-type: none"> <li>i. Formal or informal school recreational, sporting and outdoor activities and competitions whether carried out during or outside school hours;</li> <li>ii. Formal and informal school cultural activities and</li> </ol> </li> </ol> </li> </ol>

<sup>32</sup> MoE [106.84]<sup>33</sup> Recommended Modification

	<p>competitions whether carried out during or outside school hours;</p> <p>iii. The provision of specialist hubs and units (including language immersion units and teen parent units) for students with particular educational requirements or special.</p> <p>e. Enable the use of facilities for purposes associated with the education of students including school assemblies, functions, fair and other gatherings whether carried out during or outside school hours;</p> <p>f. Enable the provision of associated administrative services; car parking and vehicle manoeuvring and health, social service and medical services (including dental clinics and sick bays);</p> <p>g. Enable the housing on site for staff members whose responsibility requires them to live on site (e.g. school caretaker) and their families.</p>
--	---

---

**MEDU-23 Designation Conditions**

1. All new buildings and structures on the site shall comply with GRZ-S1 – Height of buildings and structures.
2. All new buildings and structures on the site shall comply with GRZ-S2 – Height in relation to boundary.
3. All new buildings and structures on the site shall comply with GRZ-S3 – Setbacks.
4. All new buildings and structures on the site shall comply with GRZ-S5 – Coverage.
5. The outline plan for any additional building(s) which generate vehicle trips that meet or exceed the thresholds in TRAN-S20 – High trip generating activities shall include a basic or full integrated transport assessment in accordance with the matters of discretion in TRAN-R10 – High trip generation activities.

**MEDU-24 Designation Conditions**

1. All new buildings and structures on the site shall comply with GRZ-S1 – Height of buildings and structures.
2. All new buildings and structures on the site shall comply with GRZ-S2 – Height in relation to boundary.
3. All new buildings and structures on the site shall comply with GRZ-S3 – Setbacks.
4. All new buildings and structures on the site shall comply with GRZ-S5 – Coverage.
5. The outline plan for any additional building(s) which generate vehicle trips that meet or exceed the thresholds in TRAN-S20 – High trip generating activities shall include a basic or full integrated transport assessment in accordance with the matters of discretion in TRAN-R10 – High trip generation activities.

**MEDU-25 Designation Conditions**

1. All new buildings and structures on the site shall comply with GRZ-S1 – Height of buildings and structures.
2. All new buildings and structures on the site shall comply with GRZ-S2 – Height in relation to boundary.
3. All new buildings and structures on the site shall comply with GRZ-S3 – Setbacks.
4. All new buildings and structures on the site shall comply with GRZ-S5 – Coverage.
5. All new buildings, structures and earthworks on the site shall comply with NH-R1.
6. All new natural hazard sensitive buildings on the site shall comply with NH-R4.1
7. The outline plan for any additional building(s) which generate vehicle trips that meet or exceed the thresholds in TRAN-S20 – High trip generating activities shall include a basic or full integrated transport assessment in accordance with the matters of discretion in TRAN-R10 – High trip generation activities.

**MEDU-26 Designation Conditions**

1. All new buildings and structures on the site shall comply with MRZ-S1 – Height of buildings and structures.
2. All new buildings and structures on the site shall comply with MRZ-S2 – Height in relation to boundary.
3. All new buildings and structures on the site shall comply with MRZ-S5 – Building coverage.
4. All new buildings and structures on the site shall comply with MRZ-SZ – Setbacks.
5. All new buildings, structures and earthworks on the site shall comply with NH-R1.
6. All new natural hazard sensitive buildings on the site shall comply with NH-R4.1
7. Any new or additional use or development which generates vehicle trips that meet or exceed the thresholds in TRAN-S20 shall include a basic or full integrated transport assessment.

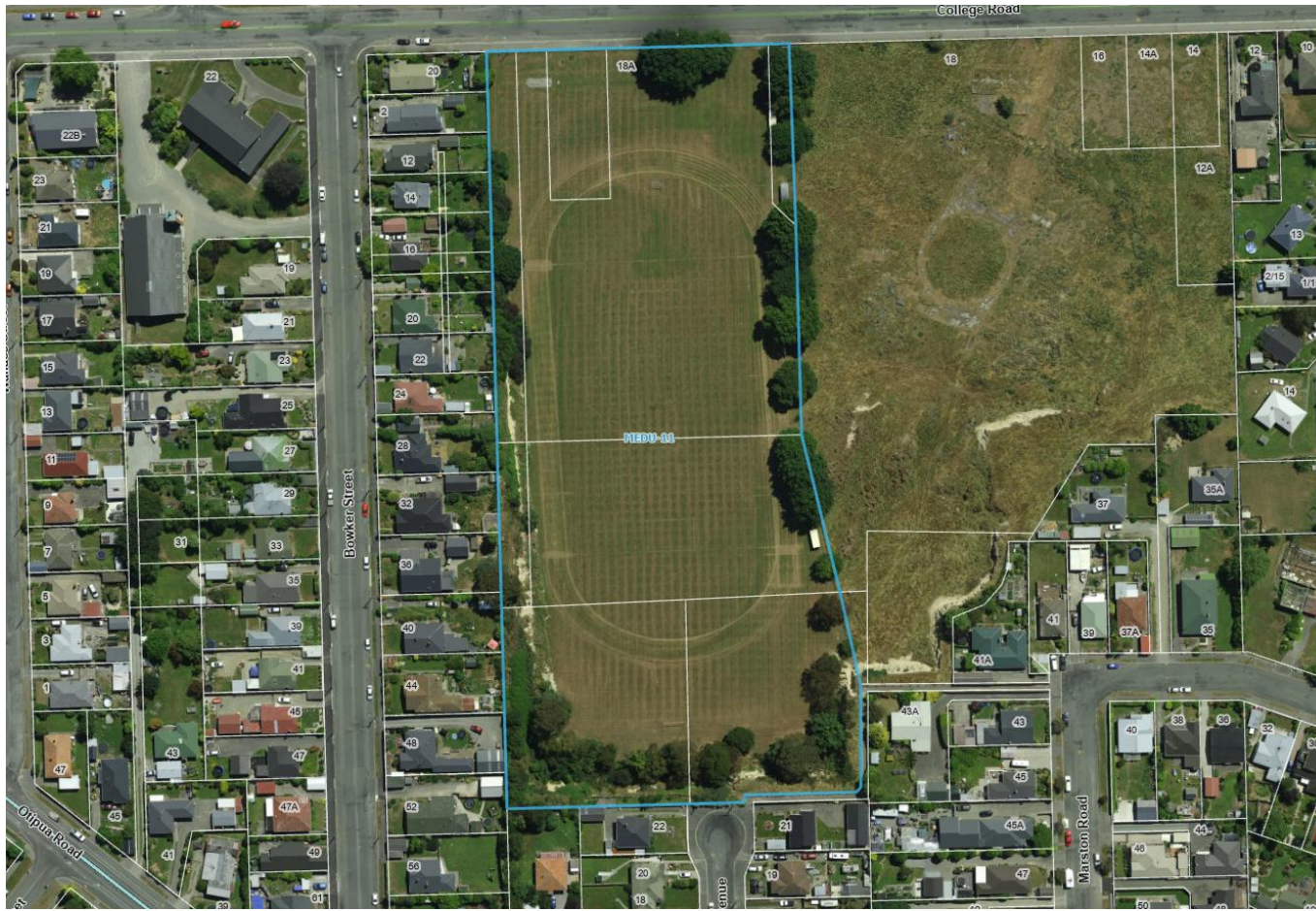
**MEDU-27 Designation Conditions**

1. All new buildings and structures on the site shall comply with GRZ-S1 – Height of buildings and structures.
2. All new buildings and structures on the site shall comply with GRZ-S2 – Height in relation to boundary.
3. All new buildings and structures on the site shall comply with GRZ-S3 – Setbacks.
4. All new buildings and structures on the site shall comply with GRZ-S5 – Coverage.
5. Any new or additional use or development which generates vehicle trips that meet or exceed the thresholds in TRAN-S20 shall include a basic or full integrated transport assessment.



### Proposed Mapping Modifications to MEDU-9 and MEDU-11

MEDU-11 is to be incorporated into MEDU-9.



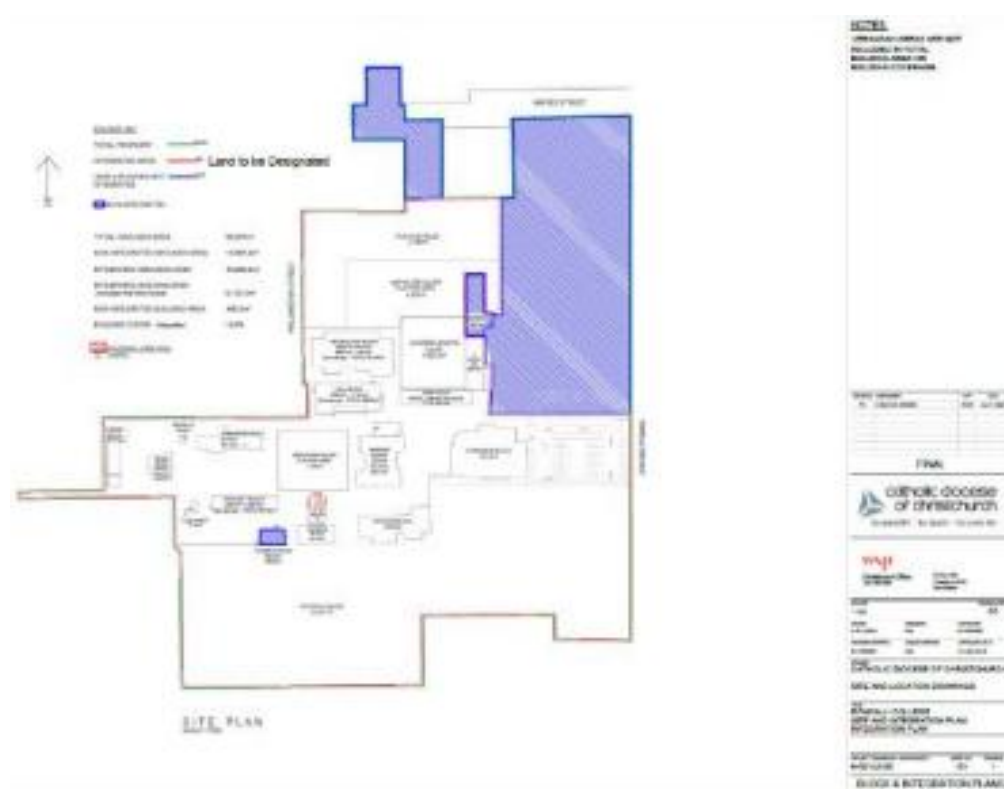


## Proposed Mapping Modifications to MEDU-26



The aerial photograph above displays MEDU-26 as notified. MoE proposed mapping changes to MEDU-26 are displayed in the adjoining image. In this image, the green outline represents the property boundaries of the site. The red outline displays the proposed designation boundary, and the blue outline displays the area that is proposed to be excluded from the designation.

### Proposed Mapping Modifications to MEDU-27



The aerial photograph above displays MEDU-27 as notified. MoE proposed mapping changes to MEDU-27 are displayed in the adjoining image. In this image, the blue shading represents the area that is proposed to be excluded from the designation.

## MPOL — MINISTER OF POLICE (NZ POLICE)

### Minister of Police / NZ Police

<u>Designation</u> <del>Unique identifier and map identifier</del>	MPOL-1
<del>Purpose of the</del> <u>Designation purpose</u>	Police <del>S</del> station
Site identifier	Timaru Police Station 20 North Street, Timaru
<del>Lapse date or</del> <del>Identification that designation has been given effect</del>	Given effect to (no lapse date)
Designation hierarchy <u>under section 177 of the Resource Management Act</u>	Primary
Conditions	No
Additional information	Former Designation 77 <u>.</u>  Rollover designation with minor corrections to schedule (remove legal description, add location/address).

### Minister of Police / NZ Police

<u>Designation</u> <del>Unique identifier and map identifier</del>	MPOL-2
<del>Purpose of the</del> <u>Designation purpose</u>	Police <del>S</del> station
Site identifier	Geraldine Police Station 45 Talbot Street, Geraldine
<del>Lapse date or</del> <del>Identification that designation has been given effect</del>	Given effect to (no lapse date)
Designation hierarchy <u>under section 177 of the Resource Management Act</u>	Primary

Conditions	No
Additional information	Former Designation 161.  Rollover designation with minor corrections to schedule (remove legal description, add location/address).
Minister of Police / NZ Police	
<del>Unique identifier and map identifier</del> <u>Designation</u>	MPOL-3
<del>Purpose of the designation purpose</del>	Police <del>S</del> station
Site identifier	Temuka Police Station 20 Domain Avenue, Temuka
<del>Lapse date or identification that designation has been given effect</del>	Given effect to (no lapse date)
<del>Designation hierarchy under section 177 of the Resource Management Act</del>	Primary
Conditions	No
Additional information	Former Designation 172.  Rollover designation with minor updates to schedule (remove legal description, add location/address).
Minister of Police / NZ Police	
<del>Unique identifier and map identifier</del> <u>Designation</u>	MPOL-4
<del>Purpose of the designation purpose</del>	Police <del>S</del> station and <del>R</del> esidence
Site identifier	Pleasant Point Police Station 129 Main Road, Pleasant Point
<del>Lapse date or identification that designation has been given effect</del>	Given effect to (no lapse date)

<b>Designation hierarchy <u>under section 177 of the Resource Management Act</u></b>	Primary
<b>Conditions</b>	No
<b>Additional information</b>	Former Designation 184. Rollover designation with minor corrections to schedule (remove legal description, add location/address).

## MJUS — MINISTER OF JUSTICE

### Minister of Justice

<b><u>Designation</u></b> <del>Unique identifier and map identifier</del>	MJUS-1
<del>Purpose of the</del> <b><u>Designation purpose</u></b>	Judicial, court, tribunal and related purposes including collection of fines and reparation, administration, support, custodial services, and ancillary activities. Works include development and operation of land and buildings for aforementioned purposes.
<b>Site identifier</b>	Timaru District Court 14 North Street and Heaton Street, Timaru
<del>Lapse date or identification that designation has been given effect</del>	Given effect to (no lapse date)
<b>Designation hierarchy <u>under section 177 of the Resource Management Act</u></b>	Primary
<b>Conditions</b>	No
<b>Additional information</b>	Former Designation 78.  Rollover designation with minor corrections to schedule (update name of requiring authority, update purpose, remove legal description, add site name/address).



## NZTA - NEW ZEALAND TRANSPORT AGENCY

### New Zealand Transport Agency

<b><u>Designation</u></b> <del>Unique identifier and map identifier</del>	NZTA-1
<del>Purpose of the</del> <b><u>Designation purpose</u></b>	To undertake construction, maintenance, operation, <u>maintain</u> use and improvement of the state highway network and associated infrastructure.
<b>Site identifier</b>	State Highway 1  From the Ashburton District Council boundary in the north to the Waimate District Council boundary in the south.
<del>Lapse date or</del> <del>Identification that designation has been given effect</del>	Designation has been <u>Given</u> effect to (i.e. no lapse date)
<b>Designation hierarchy under section 177 of the Resource Management Act</b>	Primary <u>Varies</u>
<b>Conditions</b>	<del>No</del> Yes NTZA-1 Conditions <sup>1</sup>
<b>Additional information</b>	<ol style="list-style-type: none"> <li>1. Rollover designation merged all designations for State Highway 1 into one with minor amendments to schedule (remove legal description, add location/address, update designation purpose).</li> <li>2. The following sections of State Highway 1 are a Limited Access Road, as declared under Section 88 of the Government Rounding Powers Act 1989: <ul style="list-style-type: none"> <li>• from the Rangitata River Bridge to Muff Road, Orari as declared by NZ Gazette 103, <del>P</del><u>p</u>age 2567, <del>D</del><u>d</u>ated 28th August 1980;</li> <li>• from Opuha Street, Orari to Lachlan Street, Temuka Bypass as declared by NZ Gazette 47, <del>P</del><u>p</u>age 1214, <del>D</del><u>d</u>ated 18th May 1985;</li> <li>• from Temuka Borough Southern Boundary to Flemington Street, Timaru as declared by NZ Gazette 82, <del>P</del><u>p</u>age 2644, <del>D</del><u>d</u>ated 18th December 1969; <u>and</u></li> <li>• from Saltwater Creek, Timaru to Sands Road, Pareora as declared by the NZ Gazette 16, <del>P</del><u>p</u>age 465, <del>D</del><u>d</u>ated 1st March 1979.</li> </ul> </li> </ol>

### New Zealand Transport Agency

<b><u>Designation</u></b> <del>Unique identifier and map identifier</del>	NZTA-2
<del>Purpose of the</del> <b><u>Designation</u></b>	To undertake construction, maintenance, operation, <u>maintain</u> use and improvement of the state highway network and associated infrastructure.

<sup>1</sup> Waka Kotahi [143.186]

<u>purpose</u>	
Site identifier	State Highway 8  From the Mackenzie District Council boundary in the west to the intersection with State Highway 1, Washdyke in the east.
<del>Lapse date or Identification that designation has been given effect</del>	Designation has been <u>G</u> iven effect to (i.e. no lapse date) <sup>2</sup>
Designation hierarchy <u>under section 177 of the Resource Management Act</u>	Primary
Conditions	No
Additional information	<ol style="list-style-type: none"> <li>1. Rollover designation merged all designations for State Highway 8 into one with minor amendments to schedule (remove legal description, add location/address, update designation purpose).</li> <li>2. The following sections of State Highway 8 are a Limited Access Road, as declared under Section 88 of the Government Roadings Powers Act 1989: <ul style="list-style-type: none"> <li>• <del>F</del>rom Prohibition Road, Pleasant Point to Manuka Street, Pleasant Point as declared by NZ Gazette 121 <del>P</del>age 2768, <del>D</del>ated 19th December 1973;</li> <li>• <del>F</del>rom George Street, Pleasant Point to the northern boundary of Lot 3 DP 558 as declared by NZ Gazette 54 <del>P</del>age 1076, <del>D</del>ated 7th June 1973; <u>and</u></li> <li>• <del>F</del>rom the northern boundary of Lot 3 DP 558 to intersection with State Highway 1, Washdyke as declared by NZ Gazette 57, page 1612, <del>D</del>ated 29th May 2003.</li> </ul> </li> </ol>

### New Zealand Transport Agency

<u>Designation Unique identifier and map identifier</u>	NZTA-3
<del>Purpose of the</del> <u>Designation purpose</u>	To <del>undertake</del> construction, <del>maintenance</del> , <del>operation</del> , <u>maintain</u> use and improvement of the state highway <del>network</del> and associated infrastructure.
Site identifier	State Highway 78  From the Intersection with State Highway 1, at Timaru in the west to Marine Parade, Timaru in the east.
<del>Lapse date or Identification that designation has been given effect</del>	Designation has been <u>G</u> iven effect to (i.e. no lapse date)

<sup>2</sup> Waka Kotahi [143.187]



<b>Designation hierarchy <u>under section 177 of the Resource Management Act</u></b>	Primary <u>Varies</u> <sup>3</sup>
<b>Conditions</b>	No
<b>Additional information</b>	Rollover designation merged all designations for State Highway 78 into one with minor amendments to schedule (remove legal description, add location/address, update designation purpose).
<b>New Zealand Transport Agency</b>	
<b><u>Designation</u> <del>Unique identifier and map identifier</del></b>	NZTA-4
<b><del>Purpose of the</del> <u>Designation purpose</u></b>	To <del>undertake</del> construction, <del>maintenance</del> , <del>operation</del> , <u>maintain</u> use and improvement of the state highway network and associated infrastructure.
<b>Site identifier</b>	State Highway 79  From the Mackenzie District Council boundary in the west to the intersection with State Highway 1 at Rangitata in the east.
<b><del>Lapse date or</del> <del>Identification that designation has been given effect</del></b>	<del>Designation has been</del> <u>Given</u> effect to (i.e. no lapse date)
<b>Designation hierarchy <u>under section 177 of the Resource Management Act</u></b>	Primary <u>Varies</u> <sup>4</sup>
<b>Conditions</b>	No
<b>Additional information</b>	Rollover designation merged all designations for State Highway 79 into one with minor amendments to schedule (remove legal description, add location/address, update designation purpose).

<sup>3</sup> Waka Kotahi [143.188]<sup>4</sup> Waka Kotahi [143.189]

## **NZTA-1 Designation Conditions**

1. A 300m length of “Open Graded Porous Asphalt (OGPA)” quiet road surfacing, or an alternative form of quiet road surfacing that will achieve at least the equivalent traffic noise level, will be maintained between meterage points 5900 and 6200 shown on the aerial photo below to ensure traffic noise levels at 7 Talbot Road, 12 Ellis Road and 10 Ellis Road meet or remain within levels recommended by the Transit Guidelines.
2. A 400m Length of OGPA quiet road surfacing, or an alternative form of quiet road surfacing that will achieve at least the equivalent traffic noise level, will be maintained between meterage points 6400 and 6800 shown on the aerial photo below to ensure traffic noise levels at 14 Daniels Road, 16 Daniels Road and 11 Normanby Road remain within the 1999 Transit Guidelines.<sup>5</sup>



<sup>5</sup> Waka Kotahi [143.186], TDC [42.66], Brownie, J [70.1], Gilbert, T [133.1] and Nixon, P [139.1]

## SPK — SPARK NEW ZEALAND TRADING LTD

### Spark New Zealand Trading Ltd

<del>Designation Unique identifier and map identifier</del>	SPK-1
<del>Purpose of the Designation purpose</del>	Telecommunications and <del>R</del> adio <del>C</del> ommunications and <del>A</del> ncillary
Site identifier	Washdyke Exchange 6 Racecourse Road, Washdyke
<del>Lapse date or Identification that designation has been given effect</del>	Given effect to (no lapse date)
Designation hierarchy <u>under section 177 of the Resource Management Act</u>	Secondary
Conditions	No
Additional information	See also Designation CNZ-1 which is the primary designation.  Former Designation 12.  Rollover designation with minor corrections to schedule (update requiring authority, add site name/address, remove legal description).

### Spark New Zealand Trading Ltd

<del>Designation Unique identifier and map identifier</del>	SPK-2
<del>Purpose of the Designation purpose</del>	Telecommunications and <del>R</del> adio <del>C</del> ommunications and <del>A</del> ncillary
Site identifier	Gleniti Exchange 391 Wai-iti Road, Gleniti, Timaru
<del>Lapse date or Identification that designation has been given effect</del>	Given effect to (no lapse date)
Designation hierarchy <u>under section 177 of the Resource Management Act</u>	Secondary
Conditions	No
Additional information	See also Designation CNZ-2 which is the primary designation.  Former Designation 34.  Rollover designation with minor corrections to schedule (update requiring authority, add site name/address, remove legal description).

Spark New Zealand Trading Ltd	
<del>Designation Unique identifier and map identifier</del>	SPK-3
<del>Purpose of the Designation purpose</del>	Telecommunications and <del>R</del> adio <del>C</del> ommunications and <del>A</del> ncillary
Site identifier	Timaru Exchange 22 Sophia Street, Timaru
<del>Lapse date or Identification that designation has been given effect</del>	Given effect to (no lapse date)
Designation hierarchy <u>under section 177 of the Resource Management Act</u>	Primary
Conditions	No
Additional information	Former Designation 76.  Rollover designation with minor corrections to schedule (update requiring authority, add site name/address, remove legal description).
Spark New Zealand Trading Ltd	
<del>Designation Unique identifier and map identifier</del>	SPK-4
<del>Purpose of the Designation purpose</del>	Telecommunications and <del>R</del> adio <del>C</del> ommunications and <del>A</del> ncillary
Site identifier	Clandeboy Exchange Rolleston Road, RD 26, Temuka
<del>Lapse date or Identification that designation has been given effect</del>	Given effect to (no lapse date)
Designation hierarchy <u>under section 177 of the Resource Management Act</u>	Secondary
Conditions	No
Additional information	See also Designation CNZ-6 which is the primary designation.  Former Designation 135.  Rollover designation with minor corrections to schedule (update requiring authority, add site name/address, remove legal description). The facility has been shifted from RS 38157 onto Lot 4 DP 75226.
Spark New Zealand Trading Ltd	

<b><u>Designation Unique identifier and map identifier</u></b>	SPK-5
<b><u>Purpose of the Designation purpose</u></b>	Telecommunications and <del>R</del> adio <del>C</del> ommunications and <del>A</del> ncillary
<b>Site identifier</b>	Mt Horrible Radio Station Mt Horrible Road, RD 2, Timaru
<b><u>Lapse date or Identification that designation has been given effect</u></b>	Given effect to (no lapse date)
<b><u>Designation hierarchy under section 177 of the Resource Management Act</u></b>	Secondary
<b>Conditions</b>	No
<b>Additional information</b>	See also Designation CNZ-7 which is the primary designation.  Former Designation 147.  Rollover designation with minor corrections to schedule (update requiring authority, add site name/address, remove legal description).
<b>Spark New Zealand Trading Ltd</b>	
<b><u>Designation Unique identifier and map identifier</u></b>	SPK-6
<b><u>Purpose of the Designation purpose</u></b>	Telecommunications and <del>R</del> adio <del>C</del> ommunications and <del>A</del> ncillary
<b>Site identifier</b>	Temuka Exchange 21 Fraser Street, Temuka
<b><u>Lapse date or Identification that designation has been given effect</u></b>	Given effect to (no lapse date)
<b><u>Designation hierarchy under section 177 of the Resource Management Act</u></b>	Secondary
<b>Conditions</b>	No
<b>Additional information</b>	See also Designation CNZ-12 which is the primary designation.  Former Designation 174.  Rollover designation with minor corrections to schedule (update requiring authority, add site name/address, remove legal description, correct extent of designation to include entire site).

## TDC — TIMARU DISTRICT COUNCIL

### Timaru District Council

<b>Designation Unique identifier</b> <del>and map identifier</del>	TDC-1
<b>Purpose of the Designation purpose</b>	Sanitary and storm drainage
<b>Site identifier</b>	Washdyke Drainage Channel 53 Sheffield Street, Washdyke
<b>Lapse date or Identification that designation has been given effect</b>	Given effect to (no lapse date)
<b>Designation hierarchy under section 177 of the Resource Management Act</b>	Primary
<b>Conditions</b>	No
<b>Additional information</b>	Former <del>d</del> Designation 7.  Rollover designation with minor corrections to schedule (remove legal description, add location/address).

### Timaru District Council

<b>Designation Unique identifier</b> <del>and map identifier</del>	TDC-2
<b>Purpose of the Designation purpose</b>	Wastewater treatment plant
<b>Site identifier</b>	Timaru Wastewater Treatment Plant 90 - 124 Aorangi Road, Washdyke
<b>Lapse date or Identification that designation has been given effect</b>	Given effect to (no lapse date)
<b>Designation hierarchy under section 177 of the Resource Management Act</b>	Primary
<b>Conditions</b>	No
<b>Additional information</b>	Former <del>d</del> Designation 8.  Rollover designation with minor corrections to schedule (remove legal description, add location/address).

Timaru District Council	
<del>Designation</del> <u>Unique identifier</u> <del>and map identifier</del>	TDC-3
<del>Purpose of the</del> <u>Designation purpose</u>	Stormwater drainage
Site identifier	Hilton Highway Storm <del>water</del> <u>Drainage</u> 85 Hilton Highway, Washdyke
<del>Lapse date or Identification that designation has been given effect</del>	Given effect to (no lapse date)
Designation hierarchy <u>under section 177 of the Resource Management Act</u>	Primary
Conditions	No
Additional information	Former <del>Designation</del> 14.  Rollover designation with minor corrections to schedule (remove legal description, add location/address).
Timaru District Council	
<del>Designation</del> <u>Unique identifier</u> <del>and map identifier</del>	TDC-4
<del>Purpose of the</del> <u>Designation purpose</u>	Water supply
Site identifier	Gleniti Water Supply Site 285 Gleniti Road, Timaru
<del>Lapse date or Identification that designation has been given effect</del>	Given effect to (no lapse date)
Designation hierarchy <u>under section 177 of the Resource Management Act</u>	Primary
Conditions	No
Additional information	Former <del>Designation</del> 17.  Rollover designation with minor corrections to schedule (remove legal description, add location/address).
Timaru District Council	
<del>Designation</del> <u>Unique identifier</u> <del>and map identifier</del>	TDC-5

<del>Purpose of the</del> <del>d</del> Designation <u>purpose</u>	Road widening
Site identifier	13 Hatton Street Road Widening 13 Hatton Street, Timaru
<del>Lapse date or Identification</del> <del>that designation has been</del> <del>given effect</del>	Given effect to (no lapse date)
Designation hierarchy <u>under section</u> <u>177 of the Resource</u> <u>Management Act</u>	Primary
Conditions	No
Additional information	Former <del>d</del> <u>D</u> esignation 40.  Rollover designation with minor corrections to schedule (remove legal description, add location/address).

## Timaru District Council

<del>Designation U</del> nique <del>identifier and map identifier</del>	TDC-6
<del>Purpose of the</del> <del>d</del> Designation <u>purpose</u>	Road widening
Site identifier	7 Hatton Street Road Widening 7 Hatton Street, Timaru
<del>Lapse date or Identification</del> <del>that designation has been</del> <del>given effect</del>	Given effect to (no lapse date)
Designation hierarchy <u>under section</u> <u>177 of the Resource</u> <u>Management Act</u>	Primary
Conditions	No
Additional information	Former <del>d</del> <u>D</u> esignation 41.  Rollover designation with minor corrections to schedule (remove legal description, add location/address).

## Timaru District Council

<del>Designation U</del> nique <del>identifier and map identifier</del>	TDC-7
<del>Purpose of the</del> <del>d</del> Designation <u>purpose</u>	Road widening
Site identifier	4 Trafalgar Street Road Widening 4 Trafalgar Street, Timaru



<del>Lapse date or Identification that designation has been given effect</del>	Given effect to (no lapse date)
Designation hierarchy <u>under section 177 of the Resource Management Act</u>	Primary
Conditions	No
Additional information	Former <del>d</del> <u>D</u> esignation 42.  Rollover designation with minor corrections to schedule (remove legal description, add location/address).
Timaru District Council	
<del>Designation Unique identifier and map identifier</del>	TDC-8
<del>Purpose of the d</del> <u>Designation purpose</u>	Road widening
Site identifier	Campbell / Trafalgar Street Road Widening 1 Campbell Street adjoins Trafalgar Street, Timaru ( <del>adjoins Trafalgar Street</del> )
<del>Lapse date or Identification that designation has been given effect</del>	Given effect to (no lapse date)
Designation hierarchy <u>under section 177 of the Resource Management Act</u>	Primary
Conditions	No
Additional information	Former <del>d</del> <u>D</u> esignation 43.  Rollover designation with minor corrections to schedule (remove legal description, add location/address).
Timaru District Council	
<del>Designation Unique identifier and map identifier</del>	TDC-9
<del>Purpose of the d</del> <u>Designation purpose</u>	Road widening
Site identifier	42 and 44 Trafalgar Street Road Widening 42 and 44 Trafalgar Street, Timaru
<del>Lapse date or Identification that designation has been given effect</del>	Given effect to (no lapse date)

Designation hierarchy <u>under section 177 of the Resource Management Act</u>	Primary
Conditions	No
Additional information	Former <del>d</del> Designation 44.  Rollover designation with minor corrections to schedule (remove legal description, add location/address).

## Timaru District Council

<u>Designation</u> <u>U</u> nique identifier <del>and map identifier</del>	TDC-10
<del>Purpose of the</del> <del>d</del> Designation <u>purpose</u>	Evans Street Sanitary <del>d</del> Drainage
Site identifier	89 Evans Street, Timaru
Lapse date <del>or Identification that designation has been given effect</del>	Given effect to (no lapse date)
Designation hierarchy <u>under section 177 of the Resource Management Act</u>	Primary
Conditions	No
Additional information	Former <del>d</del> Designation 45.  Rollover designation with minor corrections to schedule (remove legal description, add location/address).

## Timaru District Council

<u>Designation</u> <u>U</u> nique identifier <del>and map identifier</del>	TDC-11
<del>Purpose of the</del> <del>d</del> Designation <u>purpose</u>	Sanitary drainage
Site identifier	Caroline Bay Sanitary Drainage Port Loop Road, Timaru <del>r</del>
Lapse date <del>or Identification that designation has been given effect</del>	Given effect to (no lapse date)
Designation hierarchy <u>under section 177 of the Resource Management Act</u>	Primary
Conditions	No

<b>Additional information</b>	Former <del>d</del> Designation 46.  Rollover designation with minor corrections to schedule (convert from point to area, remove legal description, add location/address).
<b>Timaru District Council</b>	
<del>Designation Unique identifier and map identifier</del>	TDC-12
<del>Purpose of the dDesignation purpose</del>	Sanitary drainage
<b>Site identifier</b>	Timaru Port Unwin Road Sanitary Drainage Within Unwin Road reserve after the intersection with Hall Street, Timaru.
<del>Lapse date or Identification that designation has been given effect</del>	Given effect to (no lapse date)
<b>Designation hierarchy <u>under section 177 of the Resource Management Act</u></b>	Primary
<b>Conditions</b>	No
<b>Additional information</b>	Former <del>d</del> Designation 47.  Rollover designation with minor corrections to schedule (convert from point to area, remove legal description, add location/address).
<b>Timaru District Council</b>	
<del>Designation Unique identifier and map identifier</del>	TDC-13
<del>Purpose of the dDesignation purpose</del>	Sanitary drainage
<b>Site identifier</b>	Timaru Port Talbot Street Sanitary Drainage 2 Talbot Street, Timaru
<del>Lapse date or Identification that designation has been given effect</del>	Given effect to (no lapse date)
<b>Designation hierarchy <u>under section 177 of the Resource Management Act</u></b>	Primary
<b>Conditions</b>	No
<b>Additional information</b>	Former <del>d</del> Designation 48.  Rollover designation with minor corrections to schedule (remove legal

	description, add location/address).
<b>Timaru District Council</b>	
<b><u>Designation</u> Unique identifier <del>and map identifier</del></b>	TDC-14
<b><del>Purpose of the</del> <u>Designation purpose</u></b>	Corner improvements
<b>Site identifier</b>	Wai-iti / Otipua Road intersection improvements Wai-iti Road and Otipua Road intersection adjacent to 206 Wai-iti Road, Timaru
<b><del>Lapse date or Identification that designation has been given effect</del></b>	Given effect to (no lapse date)
<b>Designation hierarchy <u>under section 177 of the Resource Management Act</u></b>	Primary
<b>Conditions</b>	No
<b>Additional information</b>	Former <del>d</del> <u>D</u> esignation 52.  Rollover designation with minor corrections to schedule (remove legal description, add location/address).
<b>Timaru District Council</b>	
<b><u>Designation</u> Unique identifier <del>and map identifier</del></b>	TDC-15
<b><del>Purpose of the</del> <u>Designation purpose</u></b>	Sanitary drainage
<b>Site identifier</b>	Timaru Sanitary Drainage Station 1 Queen Street, Timaru
<b><del>Lapse date or Identification that designation has been given effect</del></b>	Given effect to (no lapse date)
<b>Designation hierarchy <u>under section 177 of the Resource Management Act</u></b>	Primary
<b>Conditions</b>	No
<b>Additional information</b>	Former <del>d</del> <u>D</u> esignation 55.  Rollover designation with minor corrections to schedule (remove legal description, add location/address).

Timaru District Council	
<del>Designation Unique identifier and map identifier</del>	TDC-16
<del>Purpose of the Designation purpose</del>	Road widening
Site identifier	Wellington Street Road Widening 1C, 3, 5 and 7 Wellington Street, Timaru
<del>Lapse date or Identification that designation has been given effect</del>	Given effect to (no lapse date)
Designation hierarchy <u>under section 177 of the Resource Management Act</u>	Primary
Conditions	No
Additional information	Former <del>d</del> Designation 58.  Rollover designation with minor corrections to schedule (remove legal description, add location/address).
Timaru District Council	
<del>Designation Unique identifier and map identifier</del>	TDC-17
<del>Purpose of the Designation purpose</del>	Road widening
Site identifier	Babington Street Road Widening - Northern 15, 17, 21 and 23 Babington Street, Timaru
<del>Lapse date or Identification that designation has been given effect</del>	Given effect to (no lapse date)
Designation hierarchy <u>under section 177 of the Resource Management Act</u>	Primary
Conditions	No
Additional information	Former <del>d</del> Designation 59.  Rollover designation with minor corrections to schedule (remove legal description, add location/address).

<b>Timaru District Council</b>	
<b><u>Designation</u> Unique identifier <del>and map identifier</del></b>	TDC-18
<b><del>Purpose of the</del> <u>Designation purpose</u></b>	Road widening
<b>Site identifier</b>	Babington Street Road Widening - Southern 2, 4, 6, 8, 10, 12, 14, 16, 18, 20, 22 and 24 Babington Street, Timaru
<b><del>Lapse date or Identification that designation has been given effect</del></b>	Given effect to (no lapse date)
<b>Designation hierarchy <u>under section 177 of the Resource Management Act</u></b>	Primary
<b>Conditions</b>	No
<b>Additional information</b>	Former <del>d</del> <u>D</u> esignation 60.  Rollover designation with minor corrections to schedule (remove legal description, add location/address).
<b>Timaru District Council</b>	
<b><u>Designation</u> Unique identifier <del>and map identifier</del></b>	TDC-19
<b><del>Purpose of the</del> <u>Designation purpose</u></b>	Road widening
<b>Site identifier</b>	Hunt Street Road Widening 1, 3 and 5 Hunt Street, Seaview, Timaru
<b><del>Lapse date or Identification that designation has been given effect</del></b>	Given effect to (no lapse date)
<b>Designation hierarchy <u>under section 177 of the Resource Management Act</u></b>	Primary
<b>Conditions</b>	No
<b>Additional information</b>	Former <del>d</del> <u>D</u> esignation 61.  Rollover designation with minor corrections to schedule (remove legal description, add location/address).
<b>Timaru District Council</b>	
<b><u>Designation</u> Unique identifier <del>and map identifier</del></b>	TDC-20

<del>Purpose of the</del> <del>d</del> Designation <u>purpose</u>	Sanitary drainage
Site identifier	Conoor Road Sanitary Drainage 106 Conoor Road, Timaru
<del>Lapse date or Identification</del> <del>that designation has been</del> <del>given effect</del>	Given effect to (no lapse date)
Designation hierarchy <u>under section</u> <u>177 of the Resource</u> <u>Management Act</u>	Primary
Conditions	No
Additional information	Former <del>d</del> <u>D</u> esignation 63.  Rollover designation with minor corrections to schedule (convert from point to area, remove legal description, add location/address).

## Timaru District Council

<del>Designation U</del> nique <del>identifier and map identifier</del>	TDC-21
<del>Purpose of the</del> <del>d</del> Designation <u>purpose</u>	Sanitary drainage
Site identifier	Leckie Street Reserve Sanitary Drainage Station 23 Shaw Street, Timaru
<del>Lapse date or Identification</del> <del>that designation has been</del> <del>given effect</del>	Given effect to (no lapse date)
Designation hierarchy <u>under section</u> <u>177 of the Resource</u> <u>Management Act</u>	Primary
Conditions	No
Additional information	Former <del>d</del> <u>D</u> esignation 67.  Rollover designation with minor corrections to schedule (convert from point to area, remove legal description, add location/address).

## Timaru District Council

<del>Designation U</del> nique <del>identifier and map identifier</del>	TDC-22
<del>Purpose of the</del> <del>d</del> Designation <u>purpose</u>	Landfill
Site identifier	Timaru Landfill 23 Shaw Street, Redruth, Timaru

<b>Lapse date</b> <del>or Identification that designation has been given effect</del>	Given effect to (no lapse date)
<b>Designation hierarchy</b> <u>under section 177 of the Resource Management Act</u>	Primary
<b>Conditions</b>	Yes TDC-22 Conditions
<b>Additional information</b>	Former <del>d</del> <u>D</u> esignation 69.  Rollover designation with minor corrections to schedule (remove legal description, add location/address).

#### Timaru District Council

<b>Designation</b> <u>Unique identifier</u> <del>and map identifier</del>	TDC-23
<del>Purpose of the d</del> <u>Designation purpose</u>	Water supply
<b>Site identifier</b>	Peel Forest Water Supply - Western Site Peel Forest Road, adjacent to 1235 Peel Forest Road, Peel Forest
<b>Lapse date</b> <del>or Identification that designation has been given effect</del>	Given effect to (no lapse date)
<b>Designation hierarchy</b> <u>under section 177 of the Resource Management Act</u>	Primary
<b>Conditions</b>	No
<b>Additional information</b>	Former <del>d</del> <u>D</u> esignation 82.  Rollover designation with minor corrections to schedule (convert from point to adrea, remove legal description, add location/address).

#### Timaru District Council

<b>Designation</b> <u>Unique identifier</u> <del>and map identifier</del>	TDC-24
<del>Purpose of the d</del> <u>Designation purpose</u>	Water supply.
<b>Site identifier</b>	Peel Forest Water Supply - Eastern Site Adjoins 1268 Peel Forest Road, Peel Forest
<b>Lapse date</b> <del>or Identification that designation has been given effect</del>	Given effect to (no lapse date)
<b>Designation</b>	Primary



hierarchy <u>under section 177 of the Resource Management Act</u>	
Conditions	No
Additional information	Former <del>d</del> Designation 83.  Rollover designation with minor corrections to schedule (convert from point to area, remove legal description, add location/address).
Timaru District Council	
<u>Designation</u> Unique identifier <del>and map identifier</del>	TDC-25
<del>Purpose of the d</del> Designation <u>purpose</u>	Water supply.
Site identifier	Pareora Water Supply 2 King Street, Pareora.
Lapse date <del>or Identification that designation has been given effect</del>	Given effect to (no lapse date)
Designation hierarchy <u>under section 177 of the Resource Management Act</u>	Primary
Conditions	No
Additional information	Former <del>d</del> Designation 187.  Rollover designation with minor corrections to schedule (remove legal description, add location/address).
Timaru District Council	
<u>Designation</u> Unique identifier <del>and map identifier</del>	TDC-26
<del>Purpose of the d</del> Designation <u>purpose</u>	Water supply.
Site identifier	Four Peaks Road Water Supply - Northern Site Upstream Water Supply Site, North Branch Hae Hae Te Moana River Four Peaks Road, Peel Forest
Lapse date <del>or Identification that designation has been given effect</del>	Given effect to (no lapse date)
Designation hierarchy <u>under section 177 of the Resource Management Act</u>	Primary

Conditions	No
Additional information	Former <del>d</del> Designation 85.  Rollover designation with minor corrections to schedule (convert from point to area, remove legal description, add location/address).
Timaru District Council	
<del>Designation U</del> Unique identifier <del>and map identifier</del>	TDC-27
<del>Purpose of the d</del> Designation <u>purpose</u>	Water supply
Site identifier	Four Peaks Road Water Supply - Southern Site North Branch Hae Hae Te Moana River Four Peaks Road, Peel Forest
<del>Lapse date or Identification that designation has been given effect</del>	Given effect to (no lapse date)
Designation hierarchy <u>under section 177 of the Resource Management Act</u>	Primary
Conditions	No
Additional information	Former <del>d</del> Designation 86.  Rollover designation with minor corrections to schedule (convert from point to area, remove legal description, add location/address).
Timaru District Council	
<del>Designation U</del> Unique identifier <del>and map identifier</del>	TDC-28
<del>Purpose of the d</del> Designation <u>purpose</u>	Water supply
Site identifier	Maxwell Road Water Supply Site Maxwell Road (paper road), Peel Forest
<del>Lapse date or Identification that designation has been given effect</del>	Given effect to (no lapse date)
Designation hierarchy <u>under section 177 of the Resource Management Act</u>	Primary
Conditions	No
Additional information	Former <del>d</del> Designation 90.

	Rollover designation with minor corrections to schedule (convert from point to area, remove legal description, add location/address).
<b>Timaru District Council</b>	
<del>Designation Unique identifier and map identifier</del>	TDC-29
<del>Purpose of the Designation purpose</del>	Water supply
Site identifier	Coach Road Water Supply Site 307 Coach Road, Orari
<del>Lapse date or Identification that designation has been given effect</del>	Given effect to (no lapse date)
Designation hierarchy <u>under section 177 of the Resource Management Act</u>	Primary
Conditions	No
Additional information	Former <del>Designation</del> 95.  Rollover designation with minor corrections to schedule (convert from point to area, remove legal description, add location/address).
<b>Timaru District Council</b>	
<del>Designation Unique identifier and map identifier</del>	TDC-30
<del>Purpose of the Designation purpose</del>	Water supply
Site identifier	Orari Back Road Water Supply Site 378 Orari Back Road, Orari
<del>Lapse date or Identification that designation has been given effect</del>	Given effect to (no lapse date)
Designation hierarchy <u>under section 177 of the Resource Management Act</u>	Primary
Conditions	No
Additional information	Former <del>Designation</del> 96.  Rollover designation with minor corrections to schedule (remove legal description, add location/address).

Timaru District Council	
<del>Designation</del> <u>Unique identifier</u> <del>and map identifier</del>	TDC-31
<del>Purpose of the</del> <u>Designation purpose</u>	Water supply
Site identifier	Te Moana Road Water Supply 129 Te Moana Road, Pleasant Valley
<del>Lapse date or Identification that designation has been given effect</del>	Given effect to (no lapse date)
Designation hierarchy <u>under section 177 of the Resource Management Act</u>	Primary
Conditions	No
Additional information	Former <del>d</del> <u>D</u> esignation 97.  Rollover designation with minor corrections to schedule (convert from point to area, remove legal description, add location/address).
Timaru District Council	
<del>Designation</del> <u>Unique identifier</u> <del>and map identifier</del>	TDC-32
<del>Purpose of the</del> <u>Designation purpose</u>	Water supply
Site identifier	Woodside Road Water Supply Site 3 Woodside Road, Geraldine
<del>Lapse date or Identification that designation has been given effect</del>	Given effect to (no lapse date)
Designation hierarchy <u>under section 177 of the Resource Management Act</u>	Primary
Conditions	No
Additional information	Former <del>d</del> <u>D</u> esignation 98.  Rollover designation with minor corrections to schedule (convert from point to area, remove legal description, add location/address).
Timaru District Council	
<del>Designation</del> <u>Unique identifier</u> <del>and map identifier</del>	TDC-33

<del>Purpose of the</del> <del>d</del> Designation <u>purpose</u>	Sanitary drainage
Site identifier	Geraldine Wastewater Treatment Plant 67 Coach Road, Geraldine
<del>Lapse date or Identification</del> <del>that designation has been</del> <del>given effect</del>	Given effect to (no lapse date)
Designation hierarchy <u>under section</u> <u>177 of the Resource</u> <u>Management Act</u>	Primary
Conditions	No
Additional information	Former <del>d</del> <u>D</u> esignation 99.  Rollover designation with minor corrections to schedule (remove legal description, add location/address).

## Timaru District Council

<del>Designation U</del> nique <del>identifier and map identifier</del>	TDC-34
<del>Purpose of the</del> <del>d</del> Designation <u>purpose</u>	Refuse tip.
Site identifier	Geraldine Refuse Tip 128 Te Moana Road, Pleasant Valley
<del>Lapse date or Identification</del> <del>that designation has been</del> <del>given effect</del>	Given effect to (no lapse date)
Designation hierarchy <u>under section</u> <u>177 of the Resource</u> <u>Management Act</u>	Primary
Conditions	No
Additional information	Former <del>d</del> <u>D</u> esignation 100.  Rollover designation with minor corrections to schedule (remove legal description, add location/address).

## Timaru District Council

<del>Designation U</del> nique <del>identifier and map identifier</del>	TDC-35
<del>Purpose of the</del> <del>d</del> Designation <u>purpose</u>	Water supply.
Site identifier	Orari Water Supply Site 95 Orari Station Road, Orari

<del>Lapse date or Identification that designation has been given effect</del>	Given effect to (no lapse date)
Designation hierarchy <u>under section 177 of the Resource Management Act</u>	Primary
Conditions	No
Additional information	Former <del>d</del> <u>D</u> esignation 109.  Rollover designation with minor corrections to schedule (remove legal description, add location/address).

## Timaru District Council

<del>Designation Unique identifier and map identifier</del>	TDC-36
<del>Purpose of the d</del> <u>Designation purpose</u>	Water supply.
Site identifier	Spur Hut Road Water Supply Site 564 Spur Hut Road, Timaru District.
<del>Lapse date or Identification that designation has been given effect</del>	Given effect to (no lapse date)
Designation hierarchy <u>under section 177 of the Resource Management Act</u>	Primary
Conditions	No
Additional information	Former <del>d</del> <u>D</u> esignation 110.  Rollover designation with minor corrections to schedule (remove legal description, add location/address).

## Timaru District Council

<del>Designation Unique identifier and map identifier</del>	TDC-37
<del>Purpose of the d</del> <u>Designation purpose</u>	Water supply.
Site identifier	Rangitata Huts Water Supply Pt Res 1486, Rangitata Huts Road, Rangitata Huts
<del>Lapse date or Identification that designation has been given effect</del>	Given effect to (no lapse date)
Designation	Primary

hierarchy <u>under section 177 of the Resource Management Act</u>	
Conditions	No
Additional information	Former <del>e</del> D Designation 115.  Rollover designation with minor corrections to schedule (convert from point to area, remove legal description, add location/address).

## Timaru District Council

<u>Designation</u> <del>U</del> Unique identifier <del>and map identifier</del>	TDC-38
<del>Purpose of the e</del> Designation <u>purpose</u>	Road extension <del>=</del>
Site identifier	Elginshire Street Road Extension Adjoins Meadows Road, Washdyke
Lapse date <del>or Identification that designation has been given effect</del>	Given effect to (no lapse date)
Designation hierarchy <u>under section 177 of the Resource Management Act</u>	Primary
Conditions	No
Additional information	Former <del>e</del> D Designation 196.  Rollover designation with minor corrections to schedule (remove legal description, add location/address).

## Timaru District Council

<u>Designation</u> <del>U</del> Unique identifier <del>and map identifier</del>	TDC-39
<del>Purpose of the e</del> Designation <u>purpose</u>	Water supply <del>=</del>
Site identifier	Ōpihi River Water Supply Located between 721 Main Waitohi Road and the Ōpihi River
Lapse date <del>or Identification that designation has been given effect</del>	Given effect to (no lapse date)
Designation hierarchy <u>under section 177 of the Resource Management Act</u>	Primary
Conditions	No

<b>Additional information</b>	Former <del>d</del> <u>D</u> esignation 117.  Rollover designation with minor corrections to schedule (convert from point to area, remove legal description, add location/address).
<b>Timaru District Council</b>	
<del>Designation</del> <u>U</u> nique identifier <del>and map identifier</del>	TDC-40
<del>Purpose of the</del> <del>d</del> <u>D</u> esignation <u>purpose</u>	Water supply
<b>Site identifier</b>	Cleland Road Water Supply Site 399 Cleland Road, Timaru
<del>Lapse date or Identification that designation has been given effect</del>	Given effect to (no lapse date)
<b>Designation hierarchy</b> <u>under section 177 of the Resource Management Act</u>	Primary
<b>Conditions</b>	No
<b>Additional information</b>	Former <del>d</del> <u>D</u> esignation 118.  Rollover designation with minor corrections to schedule (remove legal description, add location/address).
<b>Timaru District Council</b>	
<del>Designation</del> <u>U</u> nique identifier <del>and map identifier</del>	TDC-41
<del>Purpose of the</del> <del>d</del> <u>D</u> esignation <u>purpose</u>	Water supply
<b>Site identifier</b>	Tengawai River Water Supply Point - Northern Albury-Fairlie Road, Albury <del>=</del>
<del>Lapse date or Identification that designation has been given effect</del>	Given effect to (no lapse date)
<b>Designation hierarchy</b> <u>under section 177 of the Resource Management Act</u>	Primary
<b>Conditions</b>	No
<b>Additional information</b>	Former <del>d</del> <u>D</u> esignation 119.  Rollover designation with minor corrections to schedule (convert from point to area, remove legal description, add location/address).



Timaru District Council	
<u>Designation</u> <del>Unique identifier and map identifier</del>	TDC-42
<del>Purpose of the</del> <u>Designation purpose</u>	Refuse tip
Site identifier	Pleasant Point Refuse Tip 23 Beck Road, Pleasant Point
<del>Lapse date or Identification that designation has been given effect</del>	Given effect to (no lapse date)
Designation hierarchy <u>under section 177 of the Resource Management Act</u>	Primary
Conditions	No
Additional information	Former <del>d</del> <u>D</u> esignation 120.  Rollover designation with minor corrections to schedule (remove legal description, add location/address).
Timaru District Council	
<u>Designation</u> <del>Unique identifier and map identifier</del>	TDC-43
<del>Purpose of the</del> <u>Designation purpose</u>	Water supply
Site identifier	Pleasant Point Water Supply Site 155 Mill Road, Pleasant Point
<del>Lapse date or Identification that designation has been given effect</del>	Given effect to (no lapse date)
Designation hierarchy <u>under section 177 of the Resource Management Act</u>	Primary
Conditions	No
Additional information	Former <del>d</del> <u>D</u> esignation 121.  Rollover designation with minor corrections to schedule (convert from point to area, remove legal description, add location/address).
Timaru District Council	
<u>Designation</u> <del>Unique identifier and map identifier</del>	TDC-44

<del>Purpose of the</del> <del>Designation purpose</del>	Water supply <del>=</del>
Site identifier	Oliver Road Water Supply 171 Oliver Road, Levels
<del>Lapse date or Identification</del> <del>that designation has been</del> <del>given effect</del>	Given effect to (no lapse date)
Designation hierarchy <u>under section 177 of the Resource Management Act</u>	Primary
Conditions	No
Additional information	Former <del>Designation</del> 122  Rollover designation with minor corrections to schedule (convert from point to area, remove legal description, add location/address).
Timaru District Council	
<del>Designation Unique</del> <del>identifier and map identifier</del>	TDC-45
<del>Purpose of the</del> <del>Designation purpose</del>	Road extension <del>=</del>
Site identifier	North Street Road Extension Crosses rail corridor, 31, 35 and 51 Hayes Street, Timaru.
<del>Lapse date or Identification</del> <del>that designation has been</del> <del>given effect</del>	Given effect to (no lapse date)
Designation hierarchy <u>under section 177 of the Resource Management Act</u>	Primary
Conditions	<del>No</del> Yes TDC-45 Conditions <sup>1</sup>
Additional information	Former <del>Designation</del> 198 <del>=</del>  Rollover designation with minor corrections to schedule (remove legal description, add location/address).
Timaru District Council	
<del>Designation Unique</del> <del>identifier and map identifier</del>	TDC-46
<del>Purpose of the</del> <del>Designation purpose</del>	Water supply <del>=</del>

<sup>1</sup> TDC [42.64]

Site identifier	Stratheona Huts Water Supply 8 Stratheona Road, Stratheona Huts
<del>Lapse date or Identification that designation has been given effect</del>	Given effect to (no lapse date)
Designation hierarchy <u>under section 177 of the Resource Management Act</u>	Primary
Conditions	No
Additional information	Former <del>d</del> <u>D</u> esignation 125.  Rollover designation with minor corrections to schedule (convert from point to area, remove legal description, add location/address).

## Timaru District Council

<u>Designation</u> <u>U</u> nique identifier <del>and map identifier</del>	TDC-47
<del>Purpose of the d</del> <u>Designation purpose</u>	Water supply
Site identifier	Waitohi Pleasant Point Road Water Supply 135 Waitohi Pleasant Point Road, Pleasant Point.
<del>Lapse date or Identification that designation has been given effect</del>	Given effect to (no lapse date)
Designation hierarchy <u>under section 177 of the Resource Management Act</u>	Primary
Conditions	No
Additional information	Former <del>d</del> <u>D</u> esignation 126.  Rollover designation with minor corrections to schedule (remove legal description, add location/address).

## Timaru District Council

<u>Designation</u> <u>U</u> nique identifier <del>and map identifier</del>	TDC-48
<del>Purpose of the d</del> <u>Designation purpose</u>	Sanitary drainage.
Site identifier	Pleasant Point Wastewater Treatment Plant Accessed via 40 George Street, Pleasant Point.
<del>Lapse date or Identification that designation has been given effect</del>	Given effect to (no lapse date)

<del>given effect</del>	
Designation hierarchy <u>under section 177 of the Resource Management Act</u>	Primary
Conditions	No
Additional information	Former <del>d</del> Designation 127.  Rollover designation with minor corrections to schedule (remove legal description, add location/address).

## Timaru District Council

<u>Designation</u> <u>Unique identifier</u> <del>and map identifier</del>	TDC-49
<del>Purpose of the d</del> Designation <u>purpose</u>	Refuse transfer station.
Site identifier	Temuka Refuse Transfer Station 45 Wilmshurst Road West, Temuka
<del>Lapse date or Identification that designation has been given effect</del>	Given effect to (no lapse date)
Designation hierarchy <u>under section 177 of the Resource Management Act</u>	Primary
Conditions	No
Additional information	Former <del>d</del> Designation 130.  Rollover designation with minor corrections to schedule (remove legal description, add location/address).

## Timaru District Council

<u>Designation</u> <u>Unique identifier</u> <del>and map identifier</del>	TDC-50
<del>Purpose of the d</del> Designation <u>purpose</u>	Water supply.
Site identifier	Cliffs Road Water Supply 349 Cliffs Road, Timaru
<del>Lapse date or Identification that designation has been given effect</del>	Given effect to (no lapse date)
Designation hierarchy <u>under section 177 of the Resource</u>	Primary

<b><u>Management Act</u></b>	
<b>Conditions</b>	No
<b>Additional information</b>	Former <del>d</del> <u>D</u> esignation 131.  Rollover designation with minor corrections to schedule (remove legal description, add location/address).
<b>Timaru District Council</b>	
<b><u>Designation Unique identifier and map identifier</u></b>	TDC-51
<b><u>Purpose of the dDesignation purpose</u></b>	Water supply.
<b>Site identifier</b>	Sutherlands Water Supply Point 430 Sutherlands Road, Timaru District.
<b><u>Lapse date or Identification that designation has been given effect</u></b>	Given effect to (no lapse date)
<b><u>Designation hierarchy under section 177 of the Resource Management Act</u></b>	Primary
<b>Conditions</b>	No
<b>Additional information</b>	Former <del>d</del> <u>D</u> esignation 132.  Rollover designation with minor corrections to schedule (remove legal description, add location/address).
<b>Timaru District Council</b>	
<b><u>Designation Unique identifier and map identifier</u></b>	TDC-52
<b><u>Purpose of the dDesignation purpose</u></b>	Aerodrome.
<b>Site identifier</b>	Timaru Airport. 160 to 186 Falvey Road, Levels.
<b><u>Lapse date or Identification that designation has been given effect</u></b>	Given effect to (no lapse date)
<b><u>Designation hierarchy under section 177 of the Resource Management Act</u></b>	Primary
<b>Conditions</b>	Yes TDC-52 Conditions
<b>Additional information</b>	Former <del>d</del> <u>D</u> esignation 143.

	Rollover designation with minor corrections to schedule (remove legal description, add location/address).
<b>Timaru District Council</b>	
<del>Designation Unique identifier and map identifier</del>	TDC-53
<del>Purpose of the Designation purpose</del>	Water supply.
Site identifier	Claremont Water Supply Site 107 Claremont Road, Timaru.
<del>Lapse date or Identification that designation has been given effect</del>	Given effect to (no lapse date)
Designation hierarchy <u>under section 177 of the Resource Management Act</u>	Primary
Conditions	No
Additional information	Former <del>Designation</del> 148.  Rollover designation with minor corrections to schedule (remove legal description, add location/address).
<b>Timaru District Council</b>	
<del>Designation Unique identifier and map identifier</del>	TDC-54
<del>Purpose of the Designation purpose</del>	Water supply.
Site identifier	Pareora Water Supply and Reservoir 819 Timaru-Pareora Highway, Pareora.
<del>Lapse date or Identification that designation has been given effect</del>	Given effect to (no lapse date)
Designation hierarchy <u>under section 177 of the Resource Management Act</u>	Primary
Conditions	No
Additional information	Former <del>Designation</del> 156.  Rollover designation with minor corrections to schedule (convert from point to area, remove legal description, add location/address).

Timaru District Council	
<del>Designation</del> <u>Unique identifier</u> <del>and map identifier</del>	TDC-55
<del>Purpose of the</del> <u>Designation purpose</u>	Hall and <del>T</del> heatre
Site identifier	Geraldine Movie Theatre 78 Talbot Street, Geraldine
<del>Lapse date or Identification that designation has been given effect</del>	Given effect to (no lapse date)
Designation hierarchy <u>under section 177 of the Resource Management Act</u>	Primary
Conditions	No
Additional information	Former <del>d</del> <u>D</u> esignation 162.  Rollover designation with minor corrections to schedule (remove legal description, add location/address).
Timaru District Council	
<del>Designation</del> <u>Unique identifier</u> <del>and map identifier</del>	TDC-56
<del>Purpose of the</del> <u>Designation purpose</u>	Road extension
Site identifier	McKechnie Street Road Extension McKechnie Street, Geraldine
<del>Lapse date or Identification that designation has been given effect</del>	Lapses on 8 October 2030
Designation hierarchy <u>under section 177 of the Resource Management Act</u>	Primary
Conditions	Yes The works associated with the designation shall be carried out in general accordance with the TDC-56 Plans.
Additional information	Former <del>d</del> <u>D</u> esignation 199.  Rollover designation with minor corrections to schedule (remove legal description, add location/address).
Timaru District Council	
<del>Designation</del> <u>Unique</u>	TDC-57

<del>identifier and map identifier</del>	
<del>Purpose of the</del> <del>Designation purpose</del>	Water supply
Site identifier	Winchester Water Supply 513 Temuka-Orari Highway, Winchester
<del>Lapse date or Identification</del> <del>that designation has been</del> <del>given effect</del>	Given effect to (no lapse date)
Designation hierarchy <u>under section 177 of the Resource Management Act</u>	Primary
Conditions	No
Additional information	Former <del>Designation</del> 168.  Rollover designation with minor corrections to schedule (remove legal description, add location/address).
Timaru District Council	
<del>Designation Unique</del> <del>identifier and map identifier</del>	TDC-58
<del>Purpose of the</del> <del>Designation purpose</del>	Sanitary drainage
Site identifier	Temuka Oxidation Ponds Accessed via 124 Domain Avenue, Temuka (Temuka Golf Course)
<del>Lapse date or Identification</del> <del>that designation has been</del> <del>given effect</del>	Given effect to (no lapse date)
Designation hierarchy <u>under section 177 of the Resource Management Act</u>	Primary
Conditions	No
Additional information	Former <del>Designation</del> 175.  Rollover designation with minor corrections to schedule (remove legal description, add location/address).
Timaru District Council	
<del>Designation Unique</del> <del>identifier and map identifier</del>	TDC-59
<del>Purpose of the</del> <del>Designation purpose</del>	Works yard



Site identifier	Pleasant Point Works Yard 40 George Street, Pleasant Point.
<del>Lapse date or Identification that designation has been given effect</del>	Given effect to (no lapse date)
Designation hierarchy <u>under section 177 of the Resource Management Act</u>	Primary
Conditions	No
Additional information	Former <del>d</del> <u>D</u> esignation 186.  Rollover designation with minor corrections to schedule (remove legal description, add location/address).
Timaru District Council	
<del>Designation Unique identifier and map identifier</del>	TDC-60
<del>Purpose of the dDesignation purpose</del>	Water <del>T</del> <u>t</u> reatment <del>P</del> <u>p</u> lant ( <del>WTP</del> ) and associated water reservoirs
Site identifier	Pleasant Valley Water Treatment Plant 477 Pleasant Valley Road, Pleasant Valley.
<del>Lapse date or Identification that designation has been given effect</del>	<u>Given effect to (no lapse date)</u> <del>No lapse date</del>
Designation hierarchy <u>under section 177 of the Resource Management Act</u>	Primary
Conditions	Yes The works associated with the designation shall be carried out in general accordance with Notice of Requirement 108.2021.91.
Additional information	<u>N</u> il.

## **TDC-45 Designation Conditions**

1. Before any construction commences, an Outline Plan shall be prepared by the Requiring Authority and submitted to Timaru District Council pursuant to Section 176A of the Resource Management Act 1991. In addition to the matters required to be included by section 176A of the Resource Management Act, the Outline Plan shall include the final design details for pedestrian and cycle ways and stormwater management measures associated with all works.
2. Before any construction commences, a Traffic Management Plan shall be prepared by the Requiring Authority and submitted to Timaru District Council. The Traffic Management Plan shall include all necessary details of road construction and traffic controls associated with the physical works of the designation. The Traffic Management Plan shall be prepared in accordance with Timaru District Council's standard for temporary traffic management.
3. The Requiring Authority shall provide appropriate signage to the general public during physical site works to define the construction areas.
4. The Requiring Authority shall take all practicable steps to ensure the noise emissions comply with the provisions of NZS 6803P:1999 "The measurement and assessment of noise from construction, maintenance, and demolition work".
5. The Requiring Authority shall ensure that areas of exposed soil are established as soon as practicable to minimise the potential for soil erosion and sediment run-off.
6. The Requiring Authority shall spray water over the construction area, as and when required, to minimise dust nuisance to private property.
7. The Requiring Authority shall ensure the storage and handling of all hazardous substances is undertaken in accordance with relevant hazardous substances regulations and relevant rules in the Timaru District Plan. When stored within the construction area, all vehicles, machinery and fuel tanks shall be locked and secured.
8. In the event of an accidental discovery of archaeological matter, including human remains, the Transit New Zealand Accidental Discovery Protocol for Transit NZ Regions 11 (Canterbury) and 12 (West Coast) shall apply.<sup>2</sup>

---

<sup>2</sup> TDC [42.64]

## TPR — TRANSPOWER NEW ZEALAND LTD

### Transpower New Zealand Ltd

<b>Designation Unique identifier and map identifier</b>	TPR-1
<b>Purpose of the Designation purpose</b>	National Grid Activities (including Electricity Substation and associated ancillary infrastructure)
<b>Site identifier</b>	Timaru Substation 76-80 Old North Road, Timaru
<b>Lapse date or Identification that designation has been given effect</b>	Given effect to (no lapse date)
<b>Designation hierarchy under section 177 of the Resource Management Act</b>	Primary
<b>Conditions</b>	No
<b>Additional information</b>	Former Designation 31.  Rollover designation with minor corrections to schedule (update purpose, add site name/address, remove legal description).

### Transpower New Zealand Ltd

<b>Designation Unique identifier and map identifier</b>	TPR-2
<b>Purpose of the Designation purpose</b>	National Grid Activities (including Electricity Substation and associated ancillary infrastructure)
<b>Site identifier</b>	Temuka Substation 171 Factory Road, Temuka
<b>Lapse date or Identification that designation has been given effect</b>	Given effect to (no lapse date)
<b>Designation hierarchy under section 177 of the Resource Management Act</b>	Primary
<b>Conditions</b>	No
<b>Additional information</b>	Former Designation 111.  Rollover designation with minor corrections to schedule (update purpose, add site name/address, remove legal description).

Transpower New Zealand Ltd	
<b>Designation</b> <del>Unique identifier and map identifier</del>	TPR-3
<del>Purpose of the</del> <b>Designation purpose</b>	National Grid <del>A</del> activities (including <del>E</del> lectricity <del>S</del> ubstation and associated ancillary infrastructure)
<b>Site identifier</b>	Northern Substation Rangitata - Orari Bridge Highway, RD 22, Geraldine
<del>Lapse date or Identification that designation has been given effect</del>	Lapses on 23 October 2034 unless it is given effect to prior to this date.
<b>Designation hierarchy</b> <u>under section 177 of the Resource Management Act</u>	Primary
<b>Conditions</b>	Yes TPR-3 Conditions
<b>Additional information</b>	Identified in the previous district plan as ID No. 200.  Rolled over from the previous district plan with no change.  As conditioned in Resource Consent 102.2018.285.
Transpower New Zealand Ltd	
<b>Designation</b> <del>Unique identifier and map identifier</del>	TPR-4
<del>Purpose of the</del> <b>Designation purpose</b>	National <del>g</del> Grid corridor protection of transmission lines
<b>Site identifier</b>	Transmission Lines to the Northern Substation Rangitata - Orari Bridge Highway, RD 22, Geraldine
<del>Lapse date or Identification that designation has been given effect</del>	Lapses on 23 October 2034 unless it is given effect to prior to this date.
<b>Designation hierarchy</b> <u>under section 177 of the Resource Management Act</u>	Primary
<b>Conditions</b>	No
<b>Additional information</b>	Former <del>d</del> Designation 201.  Rollover designation with minor corrections to schedule (update purpose, add site name/address, remove legal description).
Transpower New Zealand Ltd	

<b><u>Designation Unique identifier and map identifier</u></b>	TPR-5
<b><u>Purpose of the Designation purpose</u></b>	National Grid Activities (including Electricity Substation and associated ancillary infrastructure)
<b>Site identifier</b>	Southern Substation Includes land at Taylor Road, RD 22, Geraldine, 552 Taylor Road, RD 22, Geraldine, Arundel Belfield Road, RD 22, Geraldine
<b><u>Lapse date or Identification that designation has been given effect</u></b>	Lapses on 23 October 2034 unless it is given effect to prior to this date.
<b><u>Designation hierarchy under section 177 of the Resource Management Act</u></b>	Primary
<b>Conditions</b>	Yes TPR-5 Conditions
<b>Additional information</b>	Former Designation 202.  Rollover designation with minor corrections to schedule (update purpose, add site name/address, remove legal description).  As conditioned in Resource Consent 102.2018.285.
<b>Transpower New Zealand Ltd</b>	
<b><u>Designation Unique identifier and map identifier</u></b>	TPR-6
<b><u>Purpose of the Designation purpose</u></b>	National Grid corridor protection of transmission lines
<b>Site identifier</b>	Transmission Lines to the Southern Substation Includes land at Taylor Road, RD 22, Geraldine, 552 Taylor Road, RD 22, Geraldine, Arundel Belfield Road, RD 22, Geraldine
<b><u>Lapse date or Identification that designation has been given effect</u></b>	Lapses on 23 October 2034 unless it is given effect to prior to this date.
<b><u>Designation hierarchy under section 177 of the Resource Management Act</u></b>	Primary
<b>Conditions</b>	No
<b>Additional information</b>	Former Designation 203.  Rollover designation with minor corrections to schedule (update purpose, add site name/address, remove legal description).