

Submission on Timaru District 2045 - Draft Growth Management Strategy

To: Timaru District Council
2 King George Place PO Box 522 Timaru 7940

Submitter: Community and Public Health

Contact person:
Dr Daniel Williams
Medical Officer of Health
Community and Public Health
PO Box 510
Timaru

SUBMISSION ON TIMARU DISTRICT 2015 – DRAFT GROWTH MANAGEMENT STRATEGY

Details of submitter

1. Community and Public Health

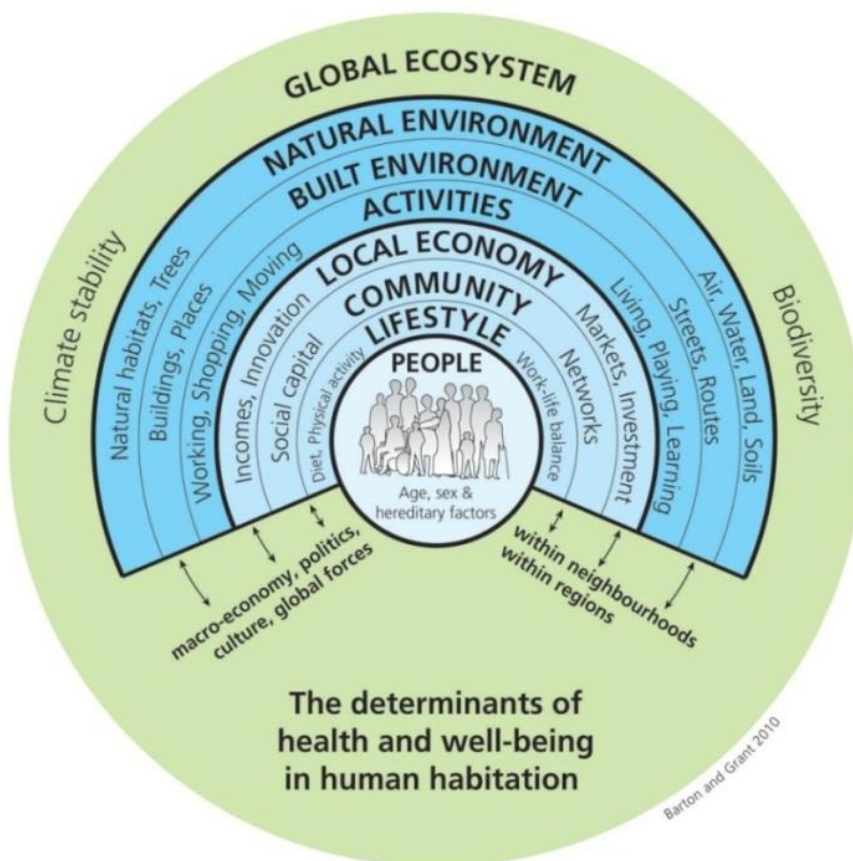
Details of submission

2. South Canterbury District Health Board (SCDHB) is responsible for promoting the reduction of adverse environmental effects on the health of people and communities and improving, promoting and protecting their health pursuant to the New Zealand Public Health and Disability Act 2000 and the Health Act 1956.
3. This submission has been prepared by Community and Public Health, a division of Canterbury District Health Board, which provides public health services to South Canterbury, Canterbury and the West Coast, and was approved by Dr. Daniel Williams on 12 February 2017. Community and Public Health has supported the South Canterbury District Health Board in reviewing a pre-consultation draft of the Draft Growth Management Strategy, and notes the District Health Board's support for the Draft Strategy.
4. Community and Public Health welcomes the opportunity to comment on the Timaru District Draft Growth Management Strategy. The future health of our populations is not just reliant on hospitals and health care services, but on a responsive environment where all sectors work collaboratively to improve health outcomes.
5. Health care services manage disease and trauma and are an important determinant of health outcomes. However health creation and wellbeing (overall quality of life) is also influenced by a wide range of factors beyond the health sector.
6. These influences can be described as the conditions in which people are born, grow, live, work and age, and are impacted by environmental, social and behavioural factors. They are often referred to as the 'social determinants of health'¹ The diagram² below shows how the various influences on health are complex and interlinked

¹ Public Health Advisory Committee. 2004. *The Health of People and Communities. A Way Forward: Public Policy and the Economic Determinants of Health*. Public Health Advisory Committee: Wellington.

² Barton, H and Grant, M. (2006) A health map for the local human habitat. *The Journal of the Royal Society for the Promotion of Health* 126 (6), pp 252-253. <http://www.bne.uwe.ac.uk/who/healthmap/default.asp>

7. The most effective way to maximise people’s wellbeing is to take these factors into account as early as possible during decision making and strategy development. Initiatives to improve health outcomes and overall quality of life must involve organisations and groups beyond the health sector, such as local government if they are to have a reasonable impact³.



³ McGinni s JM, Williams-Russo P, Knickman JR. 2002. The case for more active policy attention to health promotion. *Health Affairs*, 21(2): 78 - 93.

General Comments

8. Community and Public Health acknowledges the health considerations included in the strategic direction of the Timaru District 2045 Growth Management Strategy, including:

- landscape and biodiversity values
- building resilient communities
- safe transport system and promotion of active transport modes and choice
- community and open space that contributes to the health, safety and wellbeing of the population
- residential development that considers the diversity of dwellings to meet the needs of the population
- new housing developments that are well connected and integrated with existing neighbourhoods and infrastructure.

9. Specific comments

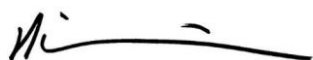
Please refer to Appendix A

Conclusion

10. Community and Public Health would be happy to discuss any of the matters raised in this submission with Council staff. Please do not hesitate to contact us.

11. Thank you for the opportunity to submit on Timaru District Draft Growth Management Strategy.

Person making the submission



Dr Daniel Williams
Medical Officer of Health

Date: 12/05/2017

Contact details

Dr. Daniel Williams
Medical Officer of Health
Community and Public Health
PO Box 510
Timaru
P +64 3 687 2600
F +64 3 688 6091

daniel.williams@cdhb.health.nz

Appendix A

Section Reference	Discussion	Recommendations
Strategic Direction 2: Landscapes, Biodiversity and Amenity		C&PH supports the inclusion of identifying and protecting outstanding landscapes and natural areas and protecting them from inappropriate use and development.
Strategic Direction 4: Building Resilient Communities	<p>The proximity to community facilities along with the co-location of community facilities to meet needs promotes a consolidated urban form and gives people easy access to services needed for daily living.</p> <p>The environment significantly influences lifestyle and activity levels. Recreation and open spaces located close to where people live and work, such as walkways and cycleway routes, enable people to exercise regularly⁴</p>	<p>C&PH supports the commitment to building resilient communities in the draft Growth Strategy.</p> <p>C&PH supports the development of a health action forum with health and local government sectors to monitor health issues.</p>
Strategic Direction 5: Takata Whenua	C&PH acknowledges the importance of the draft Growth Strategy to address takata whenua values.	C&PH encourages the Council to continue its engagement with Arowhenua Runanga regarding takata whenua values.

⁴ Community & Public Health; Christchurch City Council. *Integrated Recovering Planning Guide – Version 2*. June 2011. Canterbury District Health Board, Greater Christchurch Urban Development Strategy and Christchurch City Council

Section Reference	Discussion	Recommendations
Strategic Direction 7: Transport	Encouraging and designing for active transport modes such as cycling and walking can reduce the impact of obesity, cardiovascular disease and diabetes within our community ⁵ .	C&PH supports the inclusion of the provision for active transport, recognising that urban form encourages active transport and facilitates efficient public transport.
Strategic Direction 8: Infrastructure		C&PH supports the commitment to infrastructure and in particular that it is planned, managed and upgraded accordingly as detailed in the directives on page 58.
Strategic Direction 10: Residential	C&PH commends Timaru District Council for ensuring new residential developments or subdivisions are well connected, and integrated with existing infrastructure and neighbourhoods. From a health perspective consolidating growth in urban areas can impact positively on access to facilities and social connection for the population by, for example, improving walkability and enabling social connection.	C&PH supports the inclusion of directives pertaining to affordability, increasing housing density close to town centres, and diversity of household types.
Strategic Direction 11: Community and open space	C&PH acknowledges the recognition in the draft Growth Strategy of the positive impact of best practice principles of community and open space and their impact on people's physical and mental wellbeing. It is recognised that 'being part of a flourishing natural environment nourishes physical and emotional wellbeing'. ⁶	C&PH supports the commitment to community and open spaces as outlined in the directives on page 60.

⁵ Ibid

⁶ Ibid