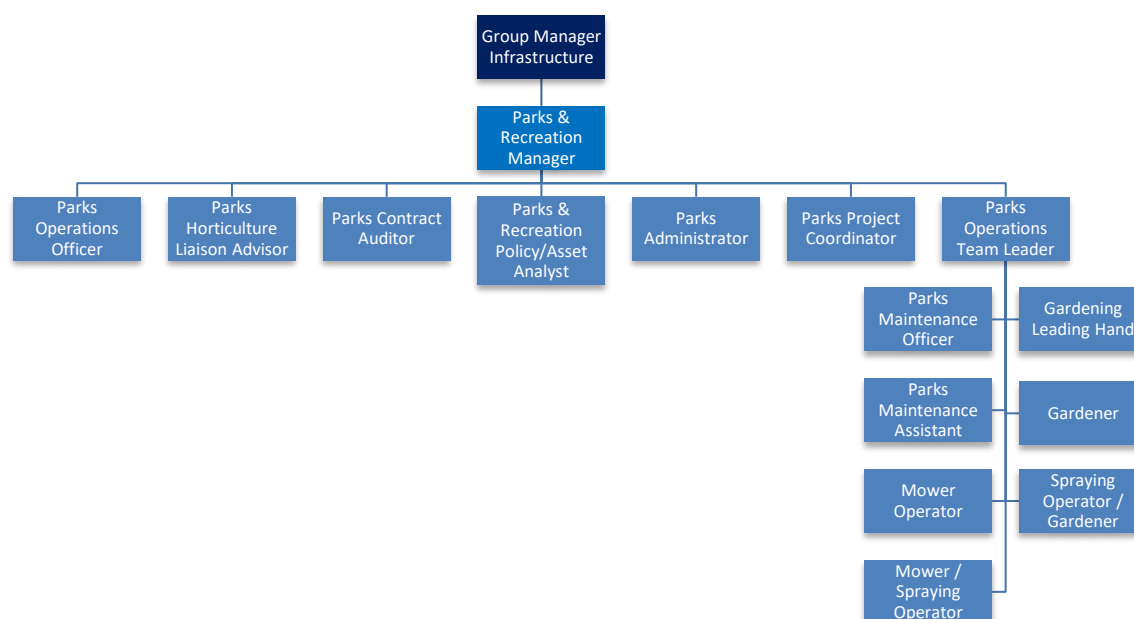


Position Description: Mower / Spraying Operator

Business Group	Infrastructure
Reports To	Parks Operations Team Leader
Direct Reports	Nil
Date	May 2025
Budget Responsibility	Nil
Financial Delegation	Nil

Business Group Structure



Business Group Purpose

The Infrastructure Group encompasses the areas of the Drainage & Water, Land Transport, Parks & Recreation, Development and Waste Management Units at the Timaru District Council. The Group plays a key role in delivering core services to the community, while leading and implementing the Infrastructure Strategy across the District. This Group will be responsible for the design and implementation of strategy and programmes of work which

align with the strategic priorities and Long Term Plan objectives of the Council. A key focus of the Group is to ensure infrastructure services promote the social, economic, environmental and cultural wellbeing of Timaru's communities today and in the future.

Purpose of the Position

The Mower / Spraying Operator position is responsible for direct in-house maintenance of Council's gardens, parks, landscapes and other greenspaces. This hands-on position will work with the team to upkeep the quality and beauty of the greenspaces around the Timaru District.

Key Relationships / Customers

External	Internal
Members of the public	Gardening Leading Hand
Contractors	Parks & Recreation Manager
Community Groups	Parks & Recreation Team
Horticulture Suppliers	Infrastructure Staff
Hardware Suppliers	All TDC Staff

Position Responsibilities

Your general duties include those outlined in this position description and may be reviewed and updated from time to time in consultation with you. You will also be required to undertake any other duties that are within your ability to perform, if asked to do so.

Greenspace, Sports Turf and Amenity Landscape Maintenance

1. Maintain turf, lawns and amenity areas using tractor trailed field mowers, out-front tractor mowers, ride-on mowers, walk behind lawnmowers or hand-held line trimmers.
2. Ensure mower blades are kept sharp and set at the correct height level for efficient and effective operation for the type of mowing standard required.

3. Ensure mowing or line trimming areas are free from debris that can damage or cause damage to mowers or other property in the area of operation.
4. Ensure a safe operating distance is used when operating ride-on mowers near the public (2 x Mowing Deck Width Minimum).
5. Use powered edgers to maintain clean edges around footpaths, fences, structures and various garden beds.
6. Keep the parks, gardens, and greenspaces within your control well-maintained.
7. Carry out any rubbish collection, fertilising, weeding, spraying, and irrigating of amenity areas as required.
8. Carry out any minor irrigation repairs as required.
9. Monitor and report on various lawns, grass areas and other greenspaces about plant growth and plant health, drainage, and surface levels with the view of identifying problem areas or damage.
10. Handle and apply hazardous fuels and chemicals in a safe manner in accordance with standard operating procedures (SOP), legislative requirements and manufactures instructions.
11. Undertake any regular minor tree and hedge maintenance including tidying up areas following 'Windfall Events' in line with good horticultural practices to ensure areas are clear for efficient mowing and reducing the risk of damage to equipment.
12. Undertake all regular maintenance checks, cleaning and servicing of all mower equipment, power and hand tools used in the course of your duties.
13. Conduct any lawn, amenity and turf maintenance, renovations or repairs as required in line with good horticultural and turf maintenance practices and standards required.
14. Keep informed of and up to date with horticulture and turf maintenance techniques.
15. Assist the Parks Maintenance Officer when required.

Spraying

16. Manage vegetation control using chemical sprays, spraying equipment and relevant handling requirements, primarily Ute with a 400-litre tank with motorised gun sprayer, 10-litre backpack sprayer and/or line-trimming/brush-cutter.

17. Ensure sprayers are maintained for efficient and effective operation.
18. Ensure chemicals are handled in a safe and compliant manner.
19. Ensure a safe operating distance and correct signage is used when operating sprayers near the public.

Gardening

20. When needed support and assist gardeners with the preparation, planting and caring of annual bedding plants.
21. Conduct regular Autumn and Winter maintenance of trees and hedges including pruning, trimming, chipping, stump grinding, mulching and leaf collection.
22. Assist with the installation and removal of hanging baskets and planter boxes when required.
23. Operate all powered gardening and landscaping tools in a safe manner.
24. Carry out other horticultural work as needed.

Teamwork

25. Coordinate daily activities with Leading Hand and team members to ensure workload can be effectively spread through the team for efficiency and productivity.
26. Coordinate activities with other gardening teams to ensure effective coverage of work and to avoid double work.
27. Share knowledge of horticultural and turf operational techniques, skills and standards with others and support the training of new team members.

General

28. Provide a good public image and are polite and courteous to members of the public.
29. Actively engage in setting own goals and objectives.
30. Assist with other duties as reasonably required by the Parks Operations Team Leader.

31. Assist with monitoring all Parks and Recreation service delivery by actively observing operations, including from a Health and Safety perspective.
32. Actively contribute to health, safety and wellbeing through working safely, taking responsibility for keeping self and colleagues free from harm, follows SOPs, reporting all incidents and hazards promptly and knowing what to do in the event of an emergency.
33. Take responsibility for ensuring Council information, data and records are stored with appropriate accessibility in designated systems, using processes and tools as described in the current Information Management Policy
34. Be actively involved in Civil Defence Emergency Management when required.
35. Live the COSI values; Customer Focus, One Team, Success and Integrity and consciously support a team culture that is consistent with the overall organisations values and above the line behaviours.
36. Commitment to the principles of the Treaty of Waitangi

Formal Qualifications / Training / Experience

Minimum Qualification	NCEA Level 2 or equivalent. Growsafe Basic Certificate.
Desired Qualification	NZQA Level 3 qualification in horticulture. Agrichemical Certified Handlers Certificate, Chainsaw Certificate.
Minimum Experience	2 years of relevant experience in related role
Desired Experience	3+ years of relevant experience in gardening or horticulture roles
Mandatory Training requirements (these may be reviewed and updated from time to time)	Class 2 Driver's license, Wheels Endorsement

Key Competencies / Skills / Knowledge

1. Demonstrated skills in the safe use and operation of ride-on mowers and tractors.
2. Demonstrated skills in using powered hand mowers, line trimmers, and edgers.
3. Demonstrated skills in the safe use and operation of vegetation spraying equipment.

4. Ability to undertake agrichemical spraying safely.
5. Demonstrate good situational awareness and observational skills while chemical spraying in the public spaces.
6. Ability to operate power tools safely.
7. Ability to work on weekends on a rostered basis.
8. Have a general understanding of horticulture and how to care for various plants, especially grass, found in the South Canterbury region.
9. Hold or work towards holding a horticulture qualification.
10. Sound understanding of the Health and Safety at Work Act 2015.
11. Have attention to detail and the technical ability to handle various plants.
12. Ability to work well as part of a team, yet also conscientiously work unsupervised.
13. Be capable of working in variable weather conditions.
14. Have good time management skills.
15. Have basic computer skills.
16. Be physically fit and able to work on knees, walk in excess of 5 km per day, and lift loads of 23 kg.
17. Have a current full driver's licence.
18. Class 2 driver's licence would be preferable.
19. Great sense of humour and work ethic.
20. High level of honesty, integrity, confidentiality and a trustworthy manner.

Parks and Recreation Manager

Mower / Spraying Operator

Date

Date